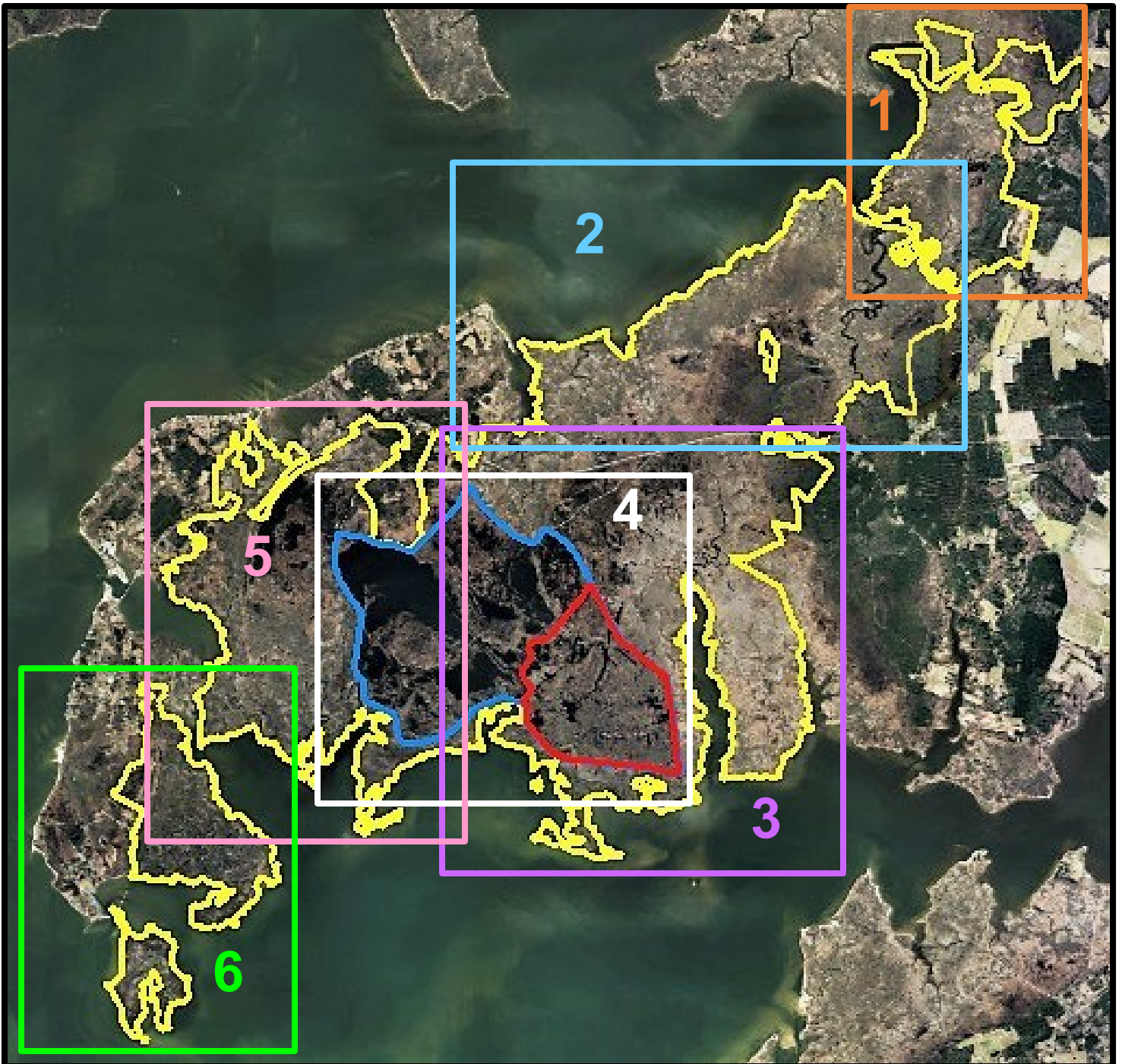


# Deal Island WMA

## Map Key



1.) Drawbridge Road Marsh

2.) Monie Bay Marsh

3.) Broad Creek Marsh

4.) Impoundment

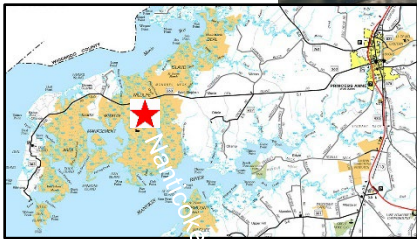
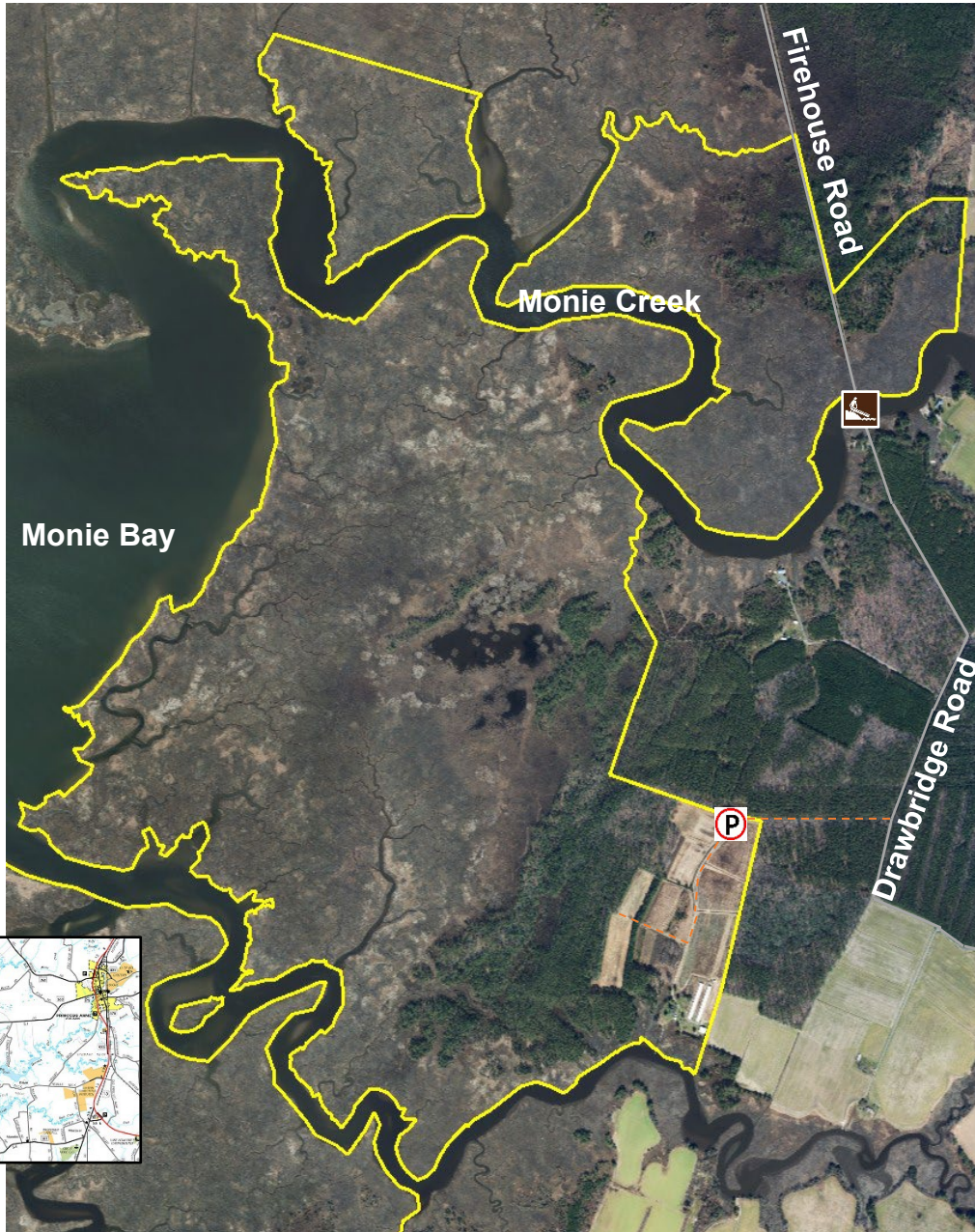
5.) Chance Marsh

6.) Deal Island Marsh

# Deal Island WMA

# Map 1

Wes Moore Governor  
Josh Kurtz Secretary



## Legend

 WMA Boundary (13,565 acres)

 Hand Launch

 Parking

 Roads and Trails



**Wildlife and Heritage Service**

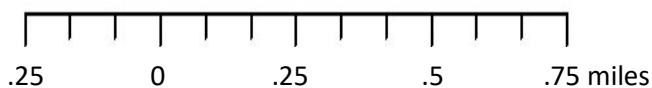
**Wellington WMA**

32733 Dublin Road

Princess Anne, Md. 21853

(410) 651-2065

[dnr.maryland.gov](http://dnr.maryland.gov)



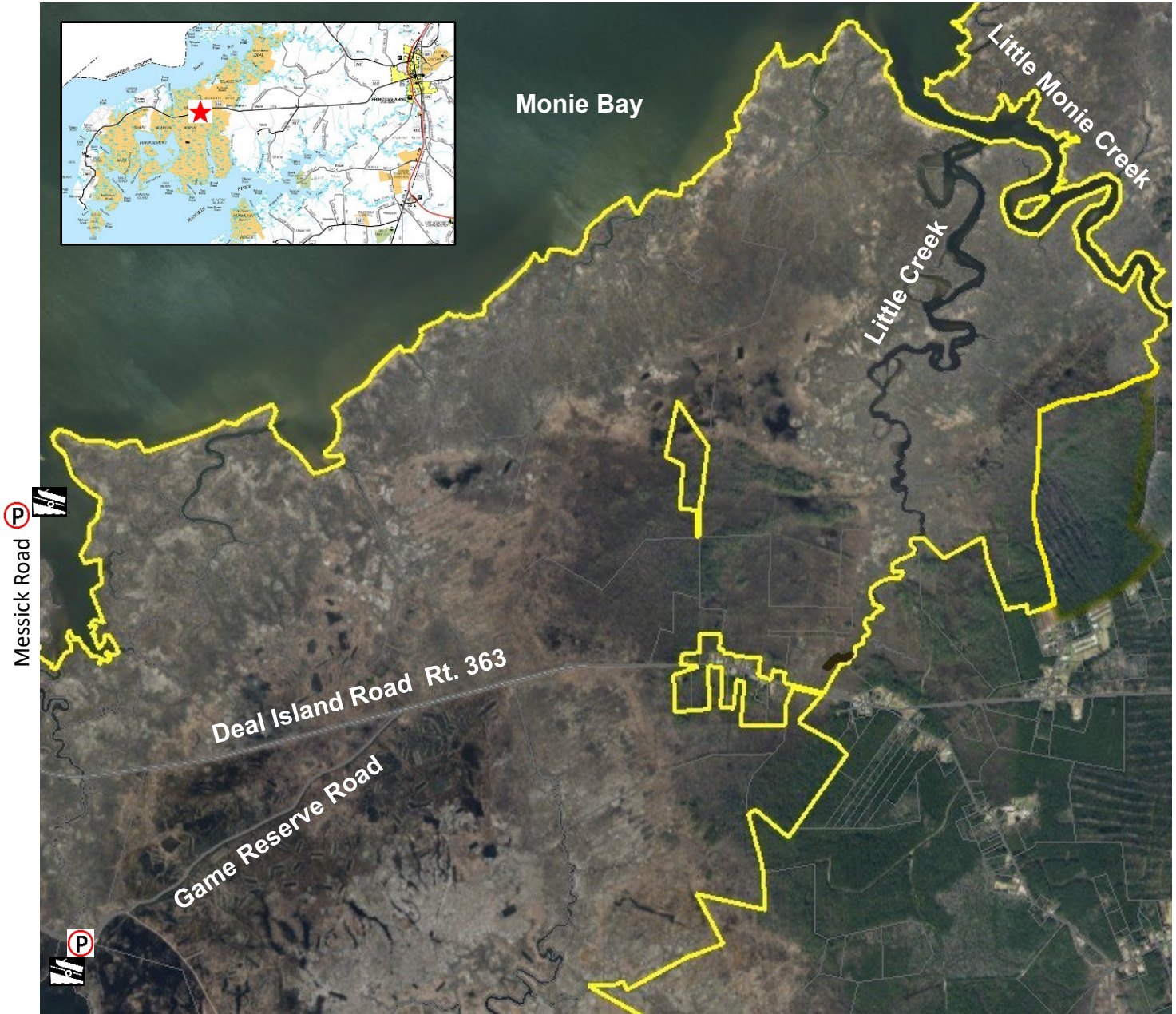
**January 2023**



# Deal Island WMA

# Map 2

Wes Moore Governor  
Josh Kurtz Secretary



## Legend

 WMA Boundary (13,565 acres)

 Boat Ramp

 Parking

 Roads and Trails



**Wildlife and Heritage Service**

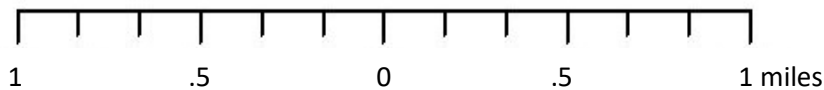
**Wellington WMA**

32733 Dublin Road

Princess Anne, Md. 21853

(410) 651-2065

[dnr.maryland.gov](http://dnr.maryland.gov)



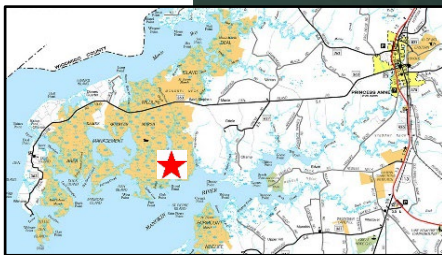
**January 2023**



# Deal Island WMA

# Map 3

Wes Moore Governor  
Josh Kurtz Secretary



## Legend

 WMA Boundary (13,565 acres)

 Boat Ramp

 Parking

 Refuge (No Hunting)

 Dike



**Wildlife and Heritage Service**

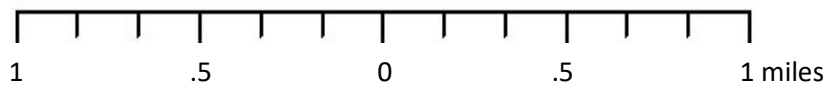
**Wellington WMA**

32733 Dublin Road

Princess Anne, Md. 21853

(410) 651-2065

[dnr.maryland.gov](http://dnr.maryland.gov)



**January 2023**



# Deal Island WMA

# Map 4

Wes Moore Governor  
Josh Kurtz Secretary



## Legend

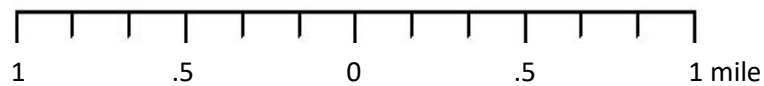
 WMA Boundary (13,565 acres)

 Boat Ramp

 Parking

 Refuge (No Hunting)

 Dike



**Wildlife and Heritage Service  
Wellington WMA**

32733 Dublin Road  
Princess Anne, Md. 21853  
(410) 651-2065

[dnr.maryland.gov](http://dnr.maryland.gov)

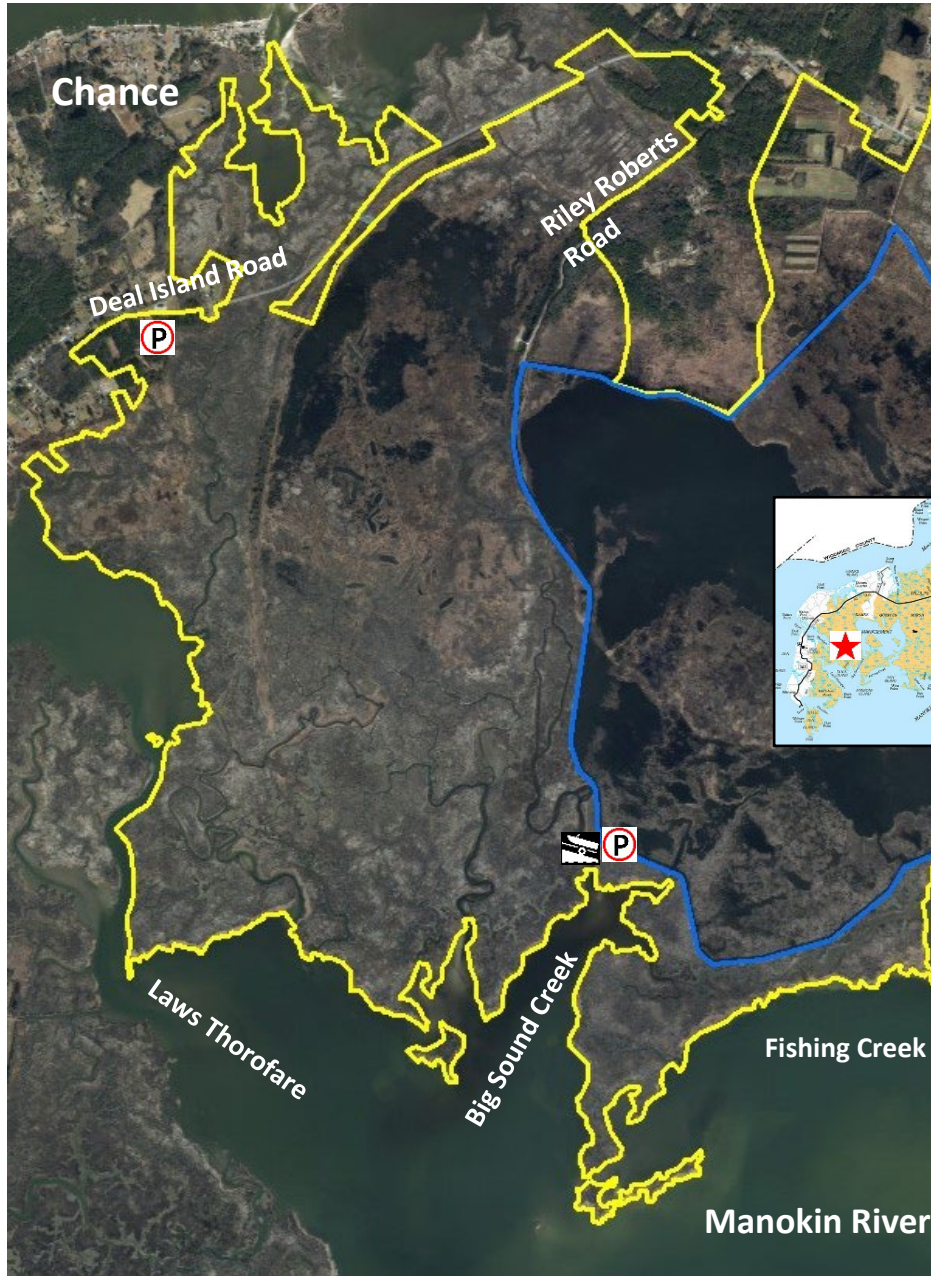
**January 2023**



# Deal Island WMA

# Map 5

Wes Moore Governor  
Josh Kurtz Secretary



## Legend

 WMA Boundary (13,565 acres)

 Boat Ramp

 Parking

 Dike



**Wildlife and Heritage Service**

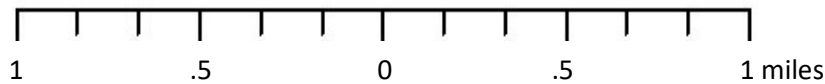
**Wellington WMA**

32733 Dublin Road

Princess Anne, Md. 21853

(410) 651-2065

[dnr.maryland.gov](http://dnr.maryland.gov)

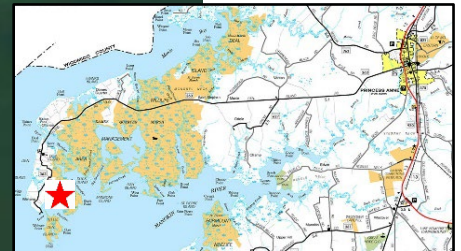


February 2023




# Deal Island WMA

# Map 6

Wes Moore Governor  
Josh Kurtz Secretary

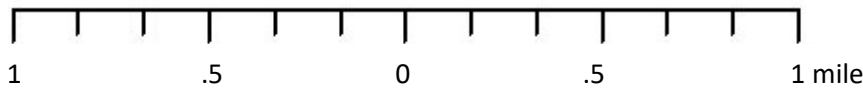


## Legend

-  WMA Boundary (13,565 acres)
-  Boat Ramp
-  Parking



**Wildlife and Heritage Service**  
**Wellington WMA**  
32733 Dublin Road  
Princess Anne, Md. 21853  
(410) 651-2065  
[dnr.maryland.gov](http://dnr.maryland.gov)



February 2023