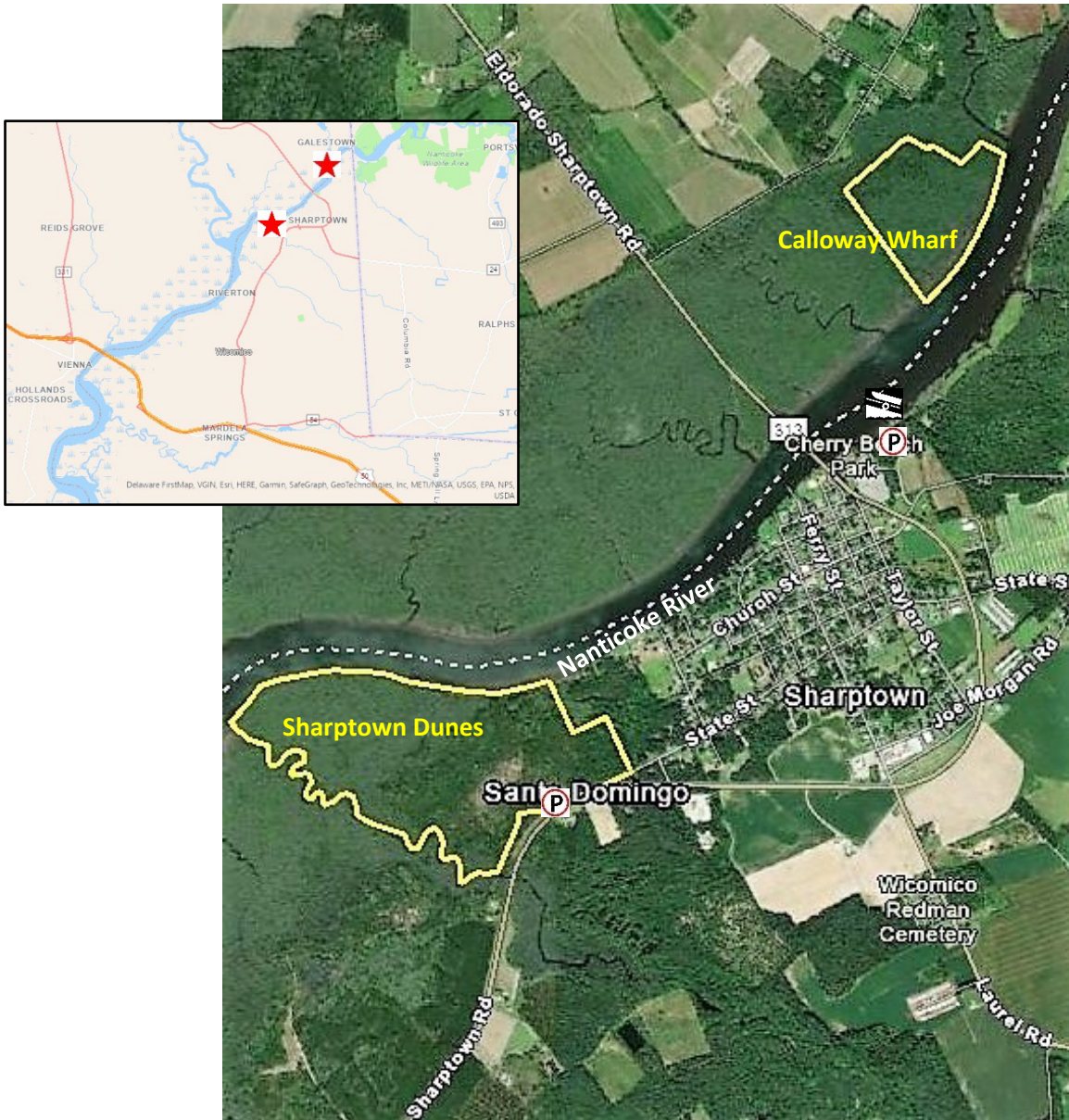





Nanticoke River WMA (Sharptown Dunes and Calloway Wharf)

Wes Moore Governor
Josh Kurtz Secretary

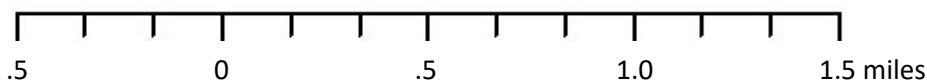


Legend

-  WMA Boundary
- Sharptown Dunes (198 acres)**
- Calloway Wharf (55 acres)**
(Boat Access Only)
-  Boat Ramp
-  Parking



Wildlife and Heritage Service
LeCompte WMA
4220 Steele Neck Road
Vienna, Md. 21860
(410) 376-3236
dnr.maryland.gov



August 2022