

The Mid-Chesapeake Bay Island Ecosystem Restoration Project - commonly known as Mid-Bay - is located in Dorchester County near what remains of the separate James and Barren Islands. The project will use dredged material from the Chesapeake Bay's Maryland navigation channels to restore remote island and wetland habitat near James and Barren Islands, which will provide improved health and sustainability to aquatic and wildlife species. Additionally, the restoration project will benefit navigational safety and passive recreation, while providing additional shoreline protection. The project is being completed under a federal/state partnership between the US Army Corps of Engineers (USACE), Baltimore District and Maryland Department of Transportation Maryland Port Administration (MDOT MPA).

Construction Update

Spring 2023



Safety Contact Information

Tug Capt. Dale and Push Boat Emelie B. will be monitoring VHF Channel 13 & 16.

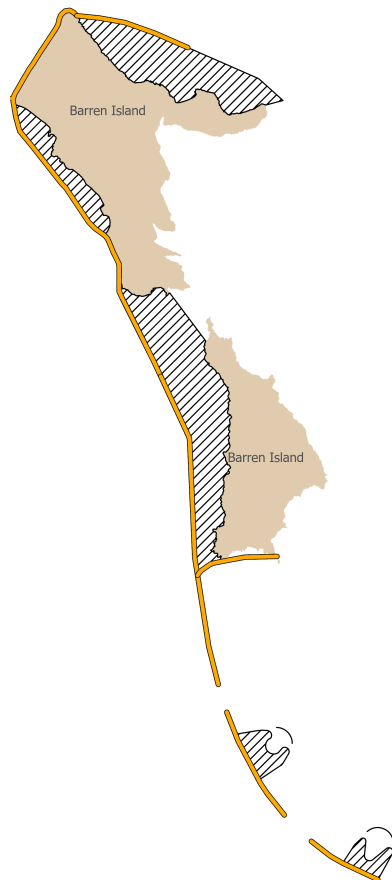


US Army Corps
of Engineers



MARYLAND DEPARTMENT
OF TRANSPORTATION
MARYLAND PORT
ADMINISTRATION

Construction Safety Notice



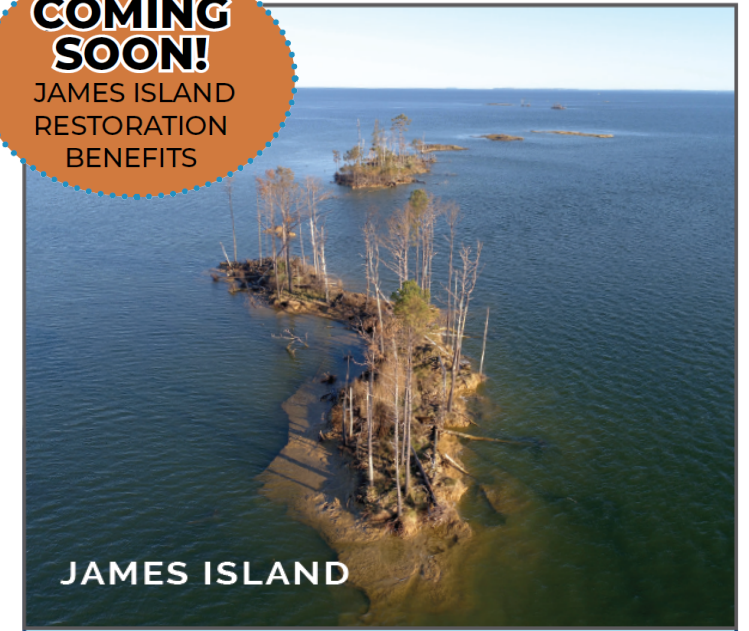
BARREN ISLAND

Barren Island is located in the Chesapeake Bay and is adjacent to Upper Hoopers Island. The ecosystem restoration effort will include the addition of a minimum of 72 acres of wetland habitat as well as installation of sills and breakwaters to protect the island remnants and adjacent seagrass bed habitat. Restoration benefits will include reduction in storm-related shoreline erosion, improved water quality, and reduced wave energy within the area.

Phase I

Barren Island Phase I construction will occur from March 2023 through October 2024. Phase I construction will include installation of a majority of the stone sills and breakwaters.

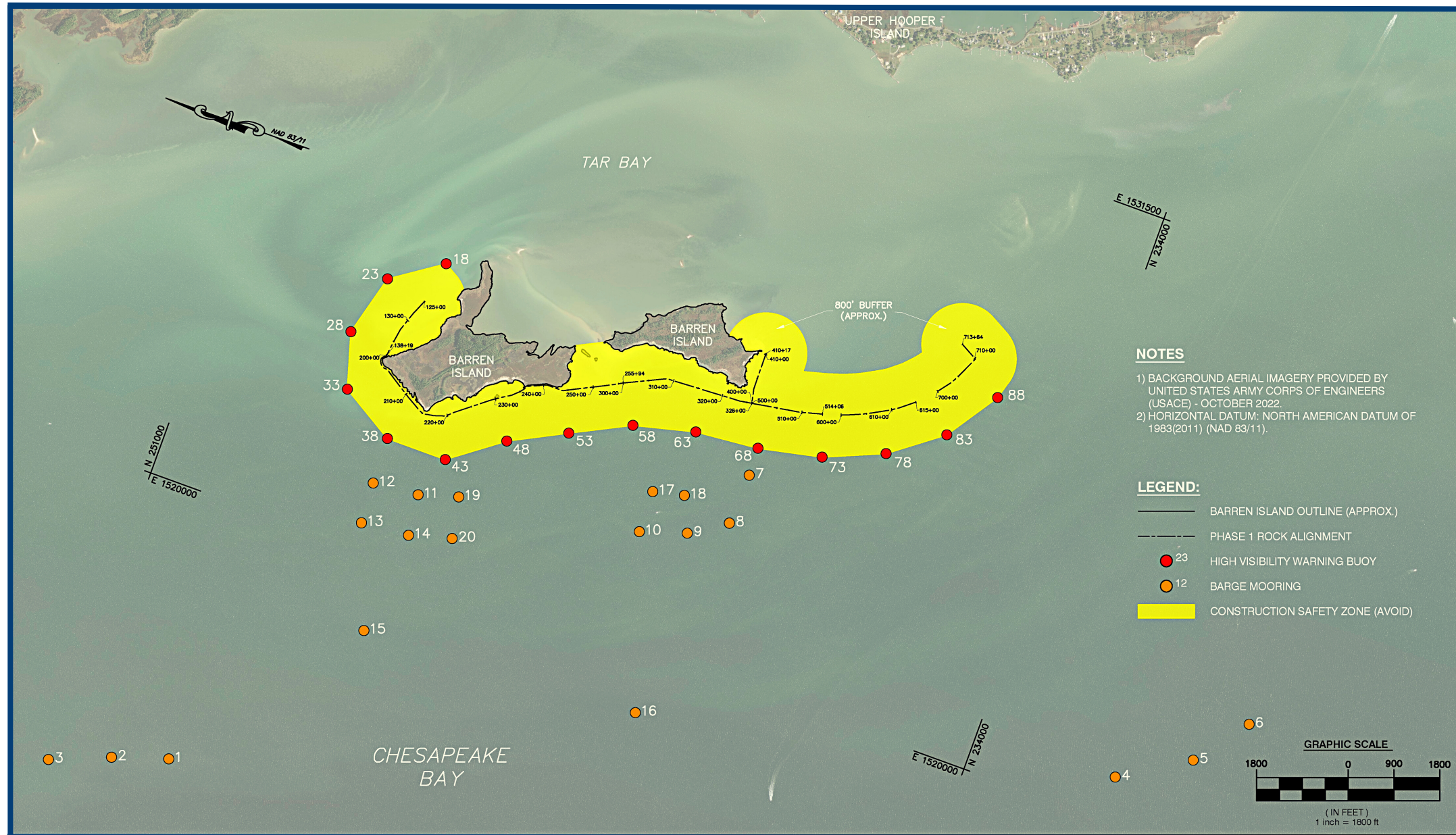
COMING SOON!
JAMES ISLAND
RESTORATION
BENEFITS



JAMES ISLAND

The ecosystem restoration near James Island will occur as part of the Mid-Bay Project. James Island is located in the Chesapeake Bay off of Taylors Island. The recommended plan for the project will include the restoration of 2,072 acres, including 45% upland habitat (above the tide elevation) and 55% wetland habitat (below mean high tide) adjacent to James Island. Benefits from James Island will be determined during design.

Barren Island Phase I Construction Safety Zone and Equipment Locations



Please use extreme caution when accessing the water immediately west of Barren Island.

Approximately twenty barges of various sizes will be moored/navigating these waters between the buoys and construction area. Please avoid the construction safety zone (yellow zone depicted) as large pieces of equipment and stone of varying size and elevations will be present in this area throughout the period of construction. Per Coast Guard requirements, all barges within the area will be marked with constant white lights and moorings marked with slow flashing white lights.



Safety Contact Information
Tug Capt. Dale and Push Boat Emelie B. will be monitoring VHF Channel 13 & 16.

➔ **Learn More**



To learn more about the USACE and the Mid-Bay Project, please visit:
nab.usace.army.mil/Mid-Bay/



To learn more about the MDOT MPA and the Mid-Bay Project, please visit:
maryland-dmmp.com

Questions? Comments?

If you have questions/comments, please contact Rachael Gilde at:
Rgilde@marylandports.com