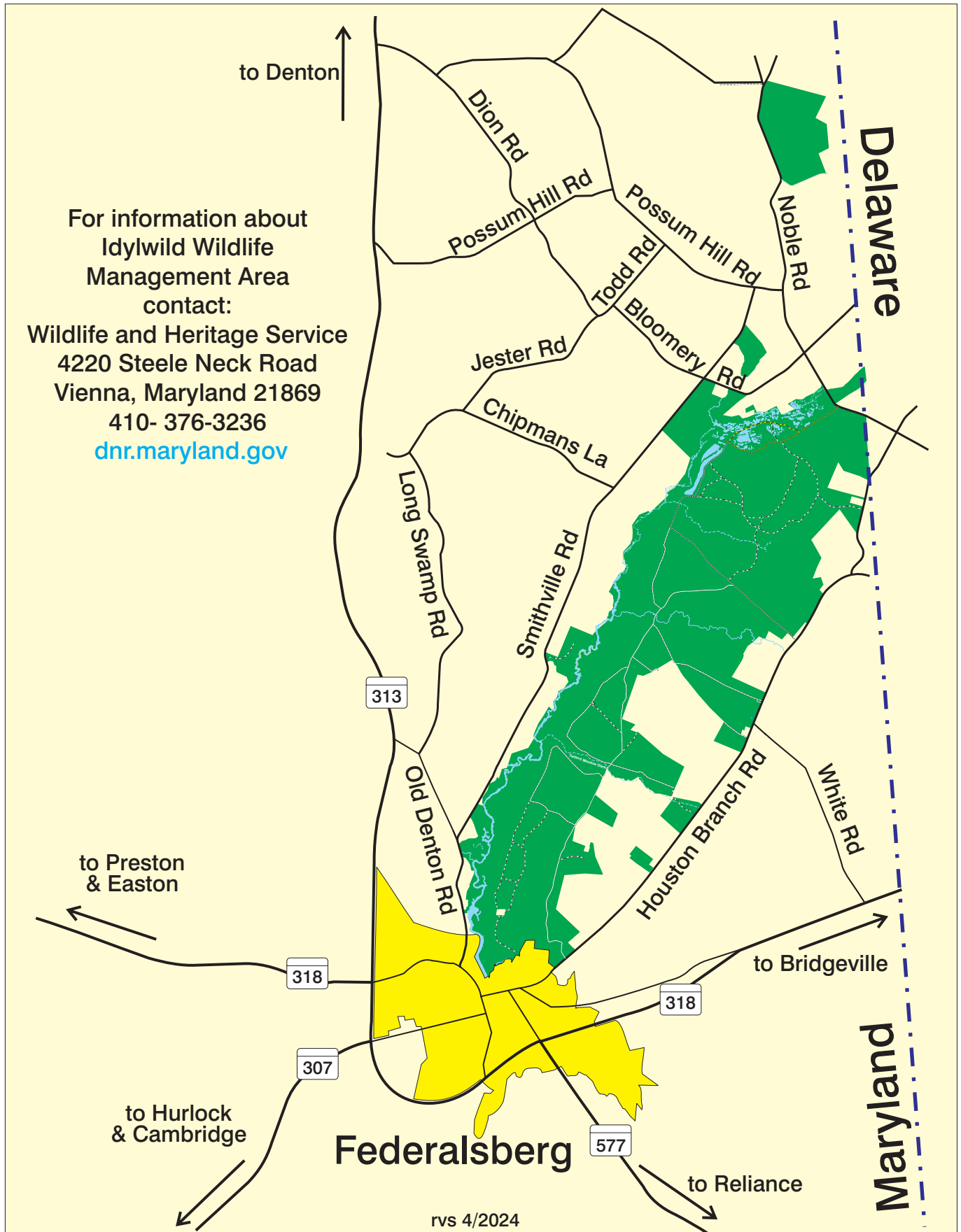


# Idylwild Wildlife Management Area

3,589 Acres





# Idylwild Wildlife Management Area



Improved Road

Unimproved Road

Trail

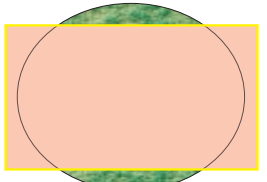


Access Trail

Building

WMA Boundary

P Parking



Safety Zone  
No Hunting or  
Loaded Weapons



Field

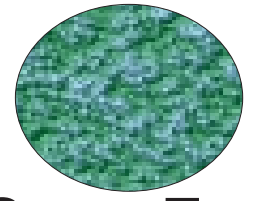


Woods

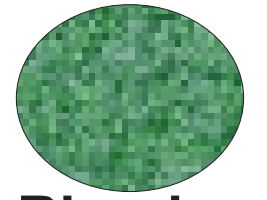
Creek or Stream



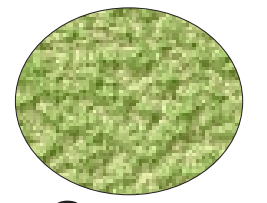
Pond



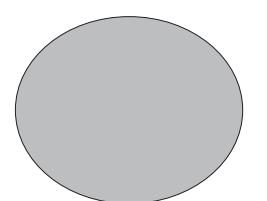
Green Tree  
Reservoir



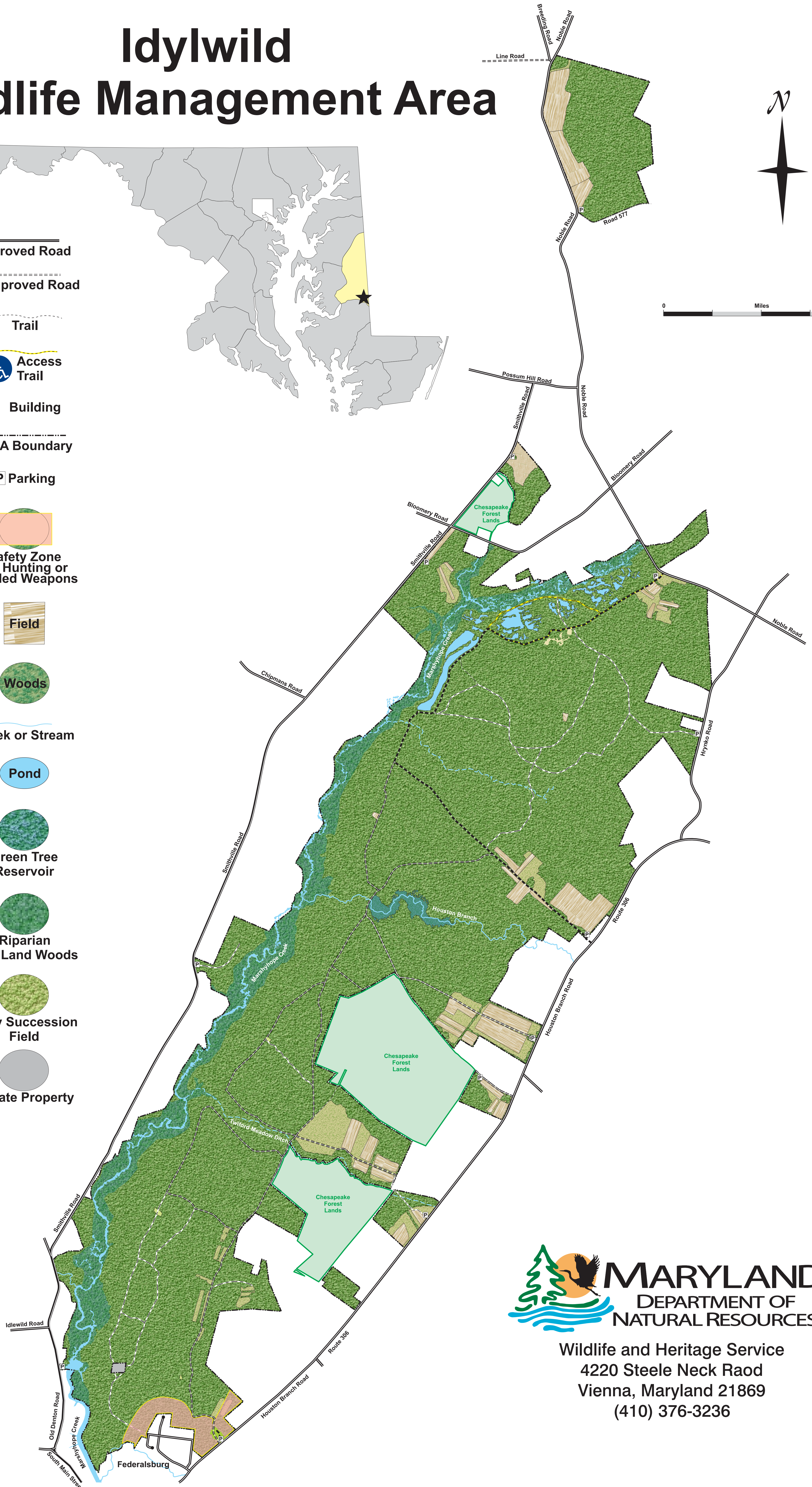
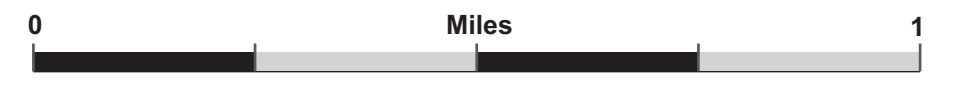
Riparian  
Low Land Woods



Early Succession  
Field



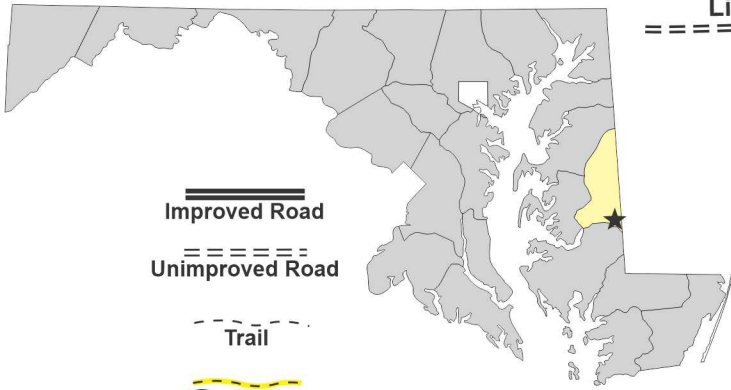
Private Property



Wildlife and Heritage Service  
4220 Steele Neck Road  
Vienna, Maryland 21869  
(410) 376-3236



# Idylwild Wildlife Management Area



-  Improved Road
-  Unimproved Road
-  Trail
-  Access Trail
-  Building
-  WMA Boundary
-  Parking
-  Safety Zone  
No Hunting or  
Loaded Weapons



Creek or Stream



Green Tree Reservoir



Riparian Low Land Woods



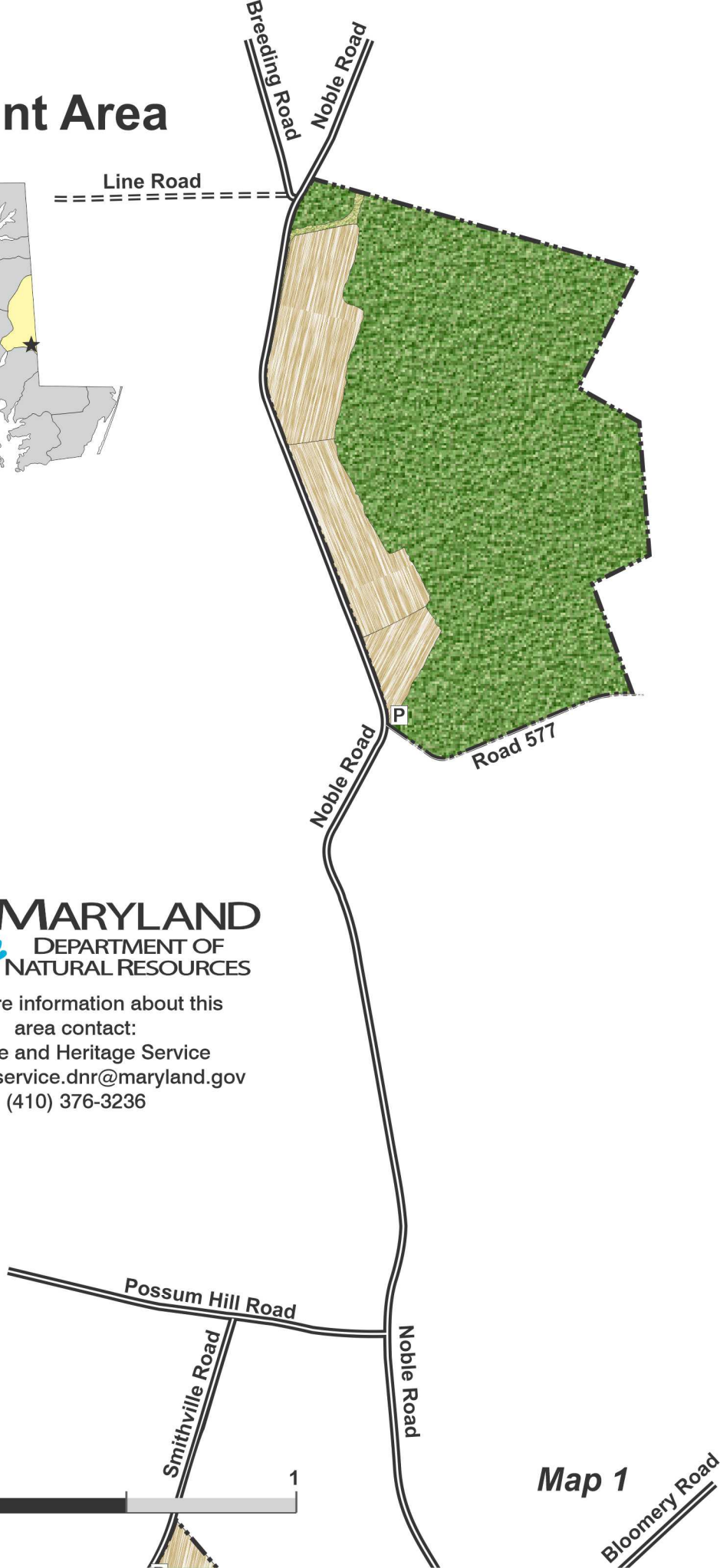
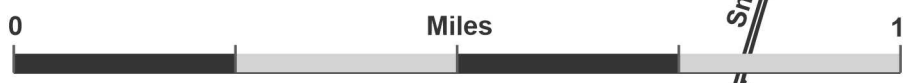
Early Succession Field



Private Property



For more information about this area contact:  
Wildlife and Heritage Service  
[customerservice.dnr@maryland.gov](mailto:customerservice.dnr@maryland.gov)  
(410) 376-3236



Map 1



Map 2





Access Trail



Chipmans Road

Marshyhope Creek

Smithville Road

Houston Branch

Marshyhope Creek

Houston Branch Road

Map 3







Marshyhope Creek

Houston Branch

Hrynko Road

Route 306

Houston Branch Road



Map 4

Chesapeake Forest





Smithville Ro

Marshyhope Creek

Houston Branch

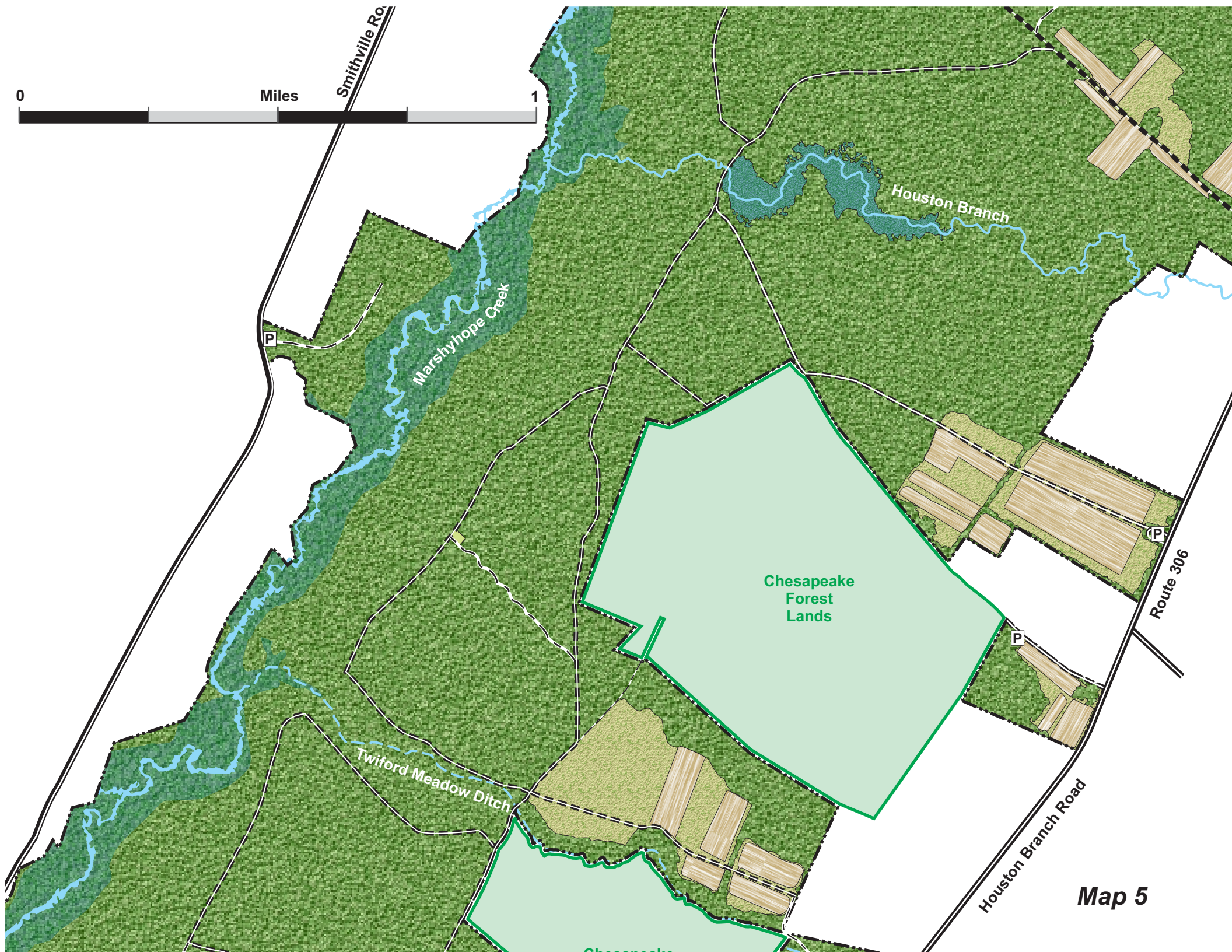
Chesapeake  
Forest  
Lands

Twiford Meadow Ditch

Route 306

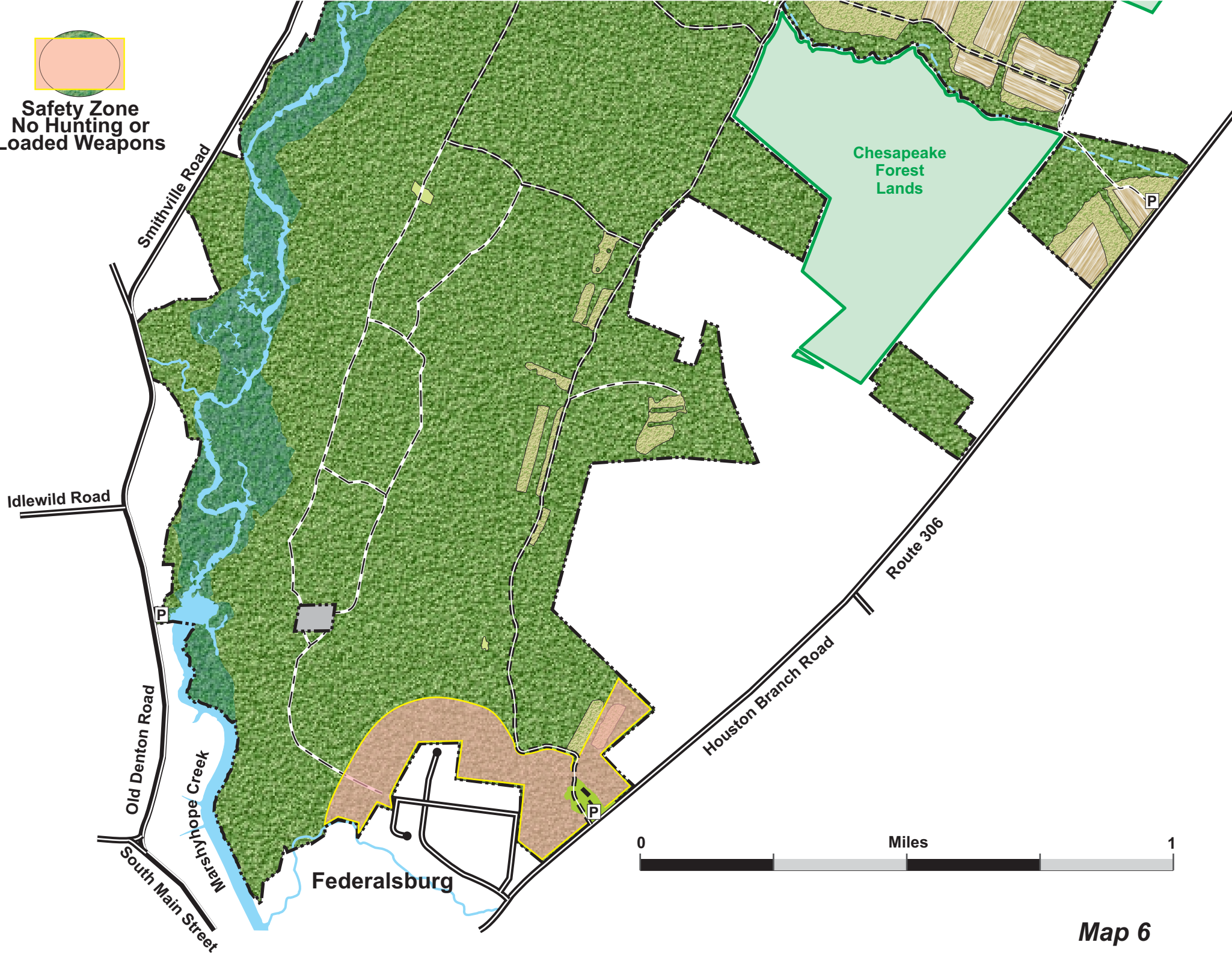
Houston Branch Road

Map 5





  
**Safety Zone**  
No Hunting or  
Loaded Weapons



**Map 6**