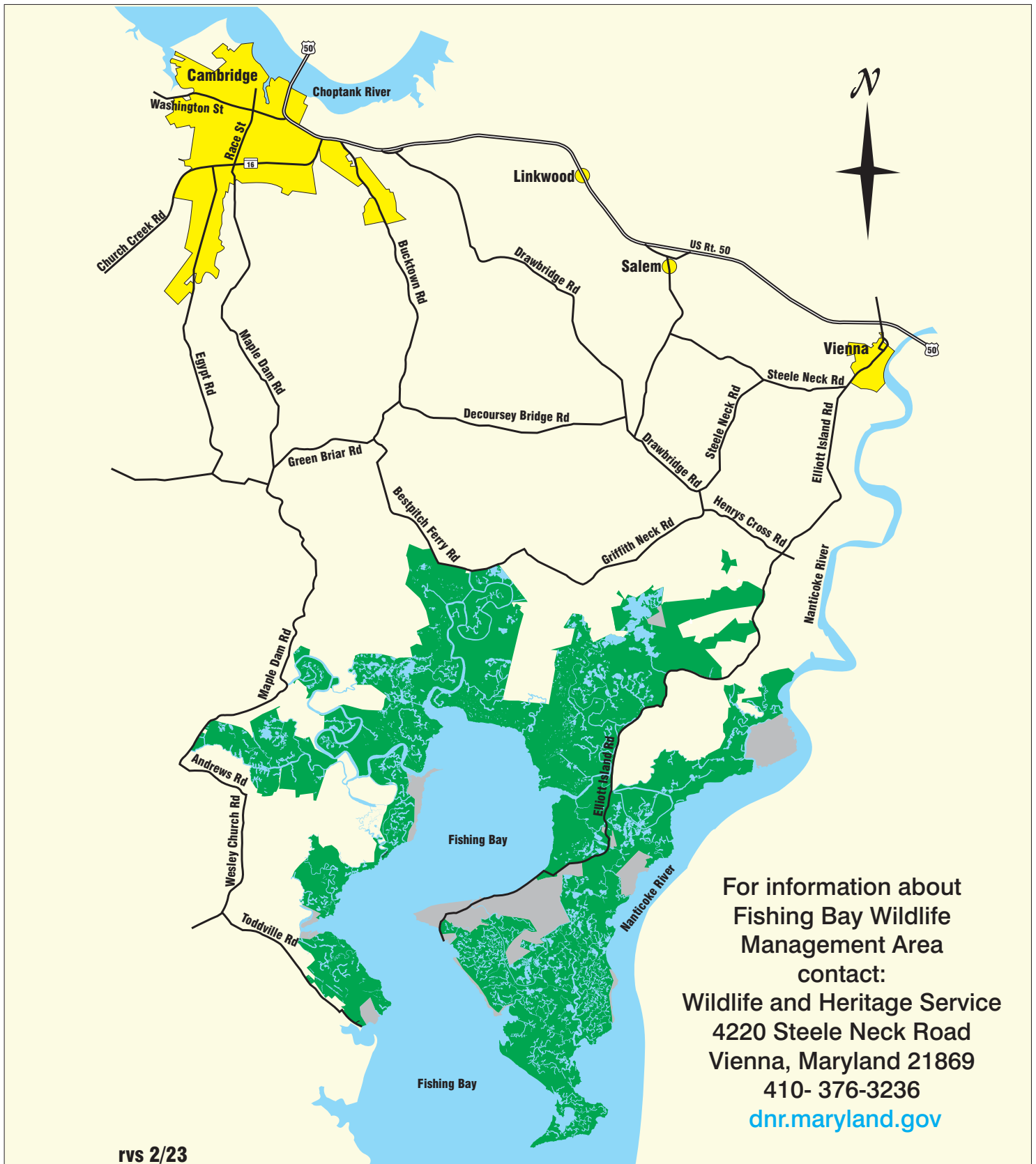


# Fishing Bay Wildlife Management Area

30,376 Acres

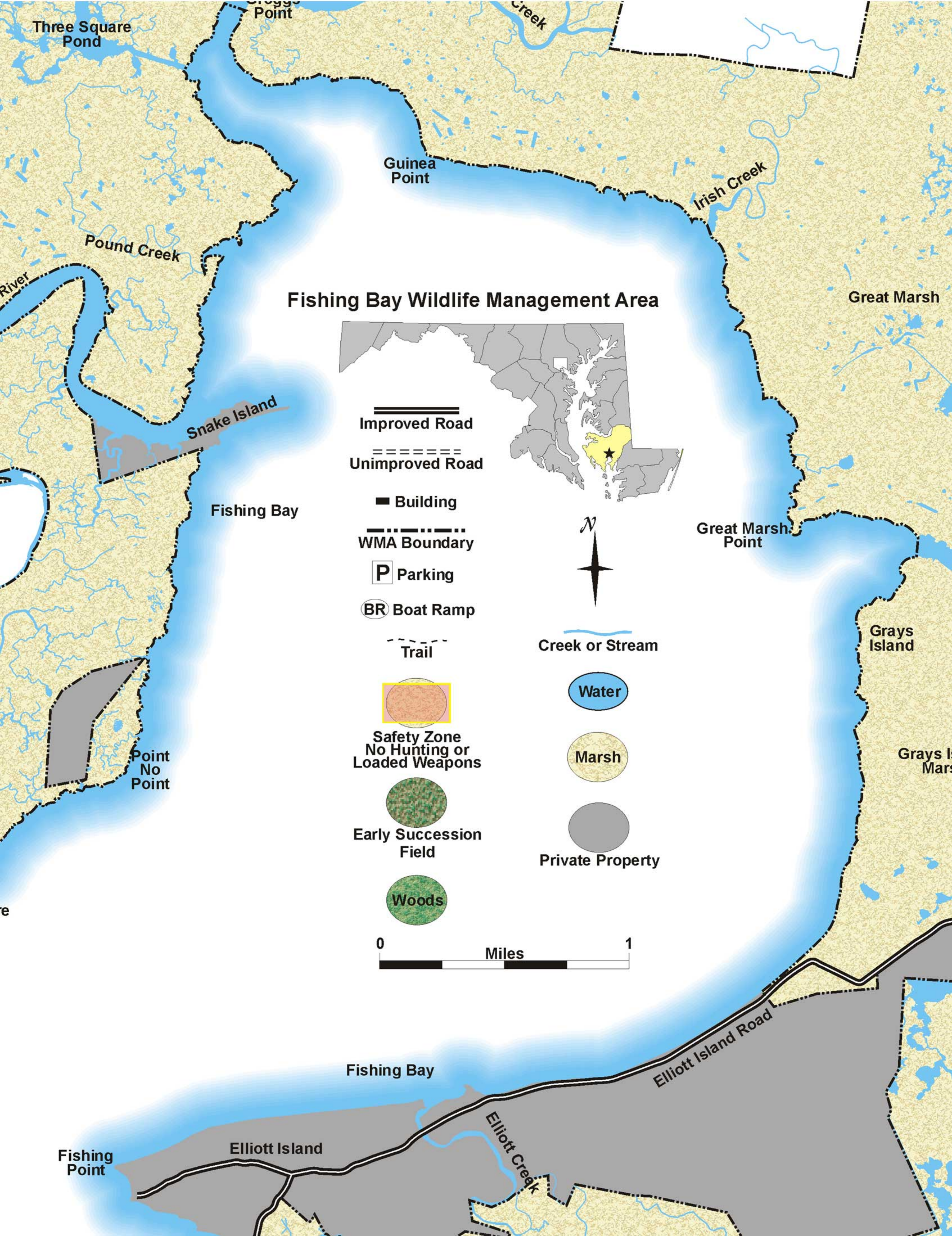


Wes Moore, Governor  
John Kurtz, Secretary








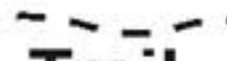






For information about  
Fishing Bay Wildlife  
Management Area  
contact:  
Wildlife and Heritage Service  
4220 Steele Neck Road  
Vienna, Maryland 21869  
410- 376-3236  
[dnr.maryland.gov](http://dnr.maryland.gov)





**Fishing Bay Wildlife Management Area**



-  Improved Road
-  Unimproved Road
-  Building
-  WMA Boundary
-  Parking
-  Boat Ramp
-  Trail
-  Creek or Stream
-  Water
-  Marsh
-  Early Succession Field
-  Private Property
-  Woods



Three Square Pond  
 Egg Point  
 Guinea Point  
 Irish Creek  
 Pound Creek  
 Snake Island  
 Fishing Bay  
 Great Marsh  
 Great Marsh Point  
 Grays Island  
 Grays Island  
 Point No Point  
 Fishing Point  
 Elliott Island  
 Elliott Creek  
 Elliott Island Road



Improved Road

Unimproved Road

Building

WMA Boundary

Parking

Boat Ramp

Trail

Safety Zone  
No Hunting or  
Loaded Weapons

Fallow  
Field

Woods

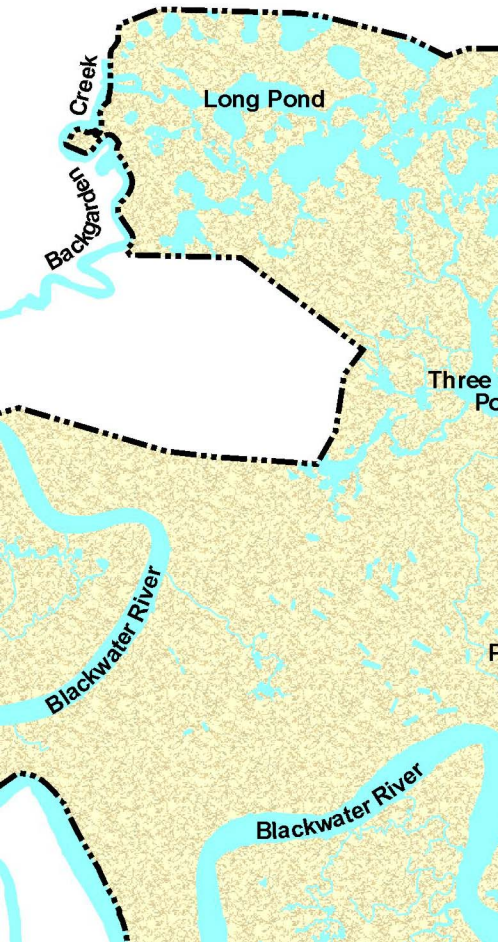
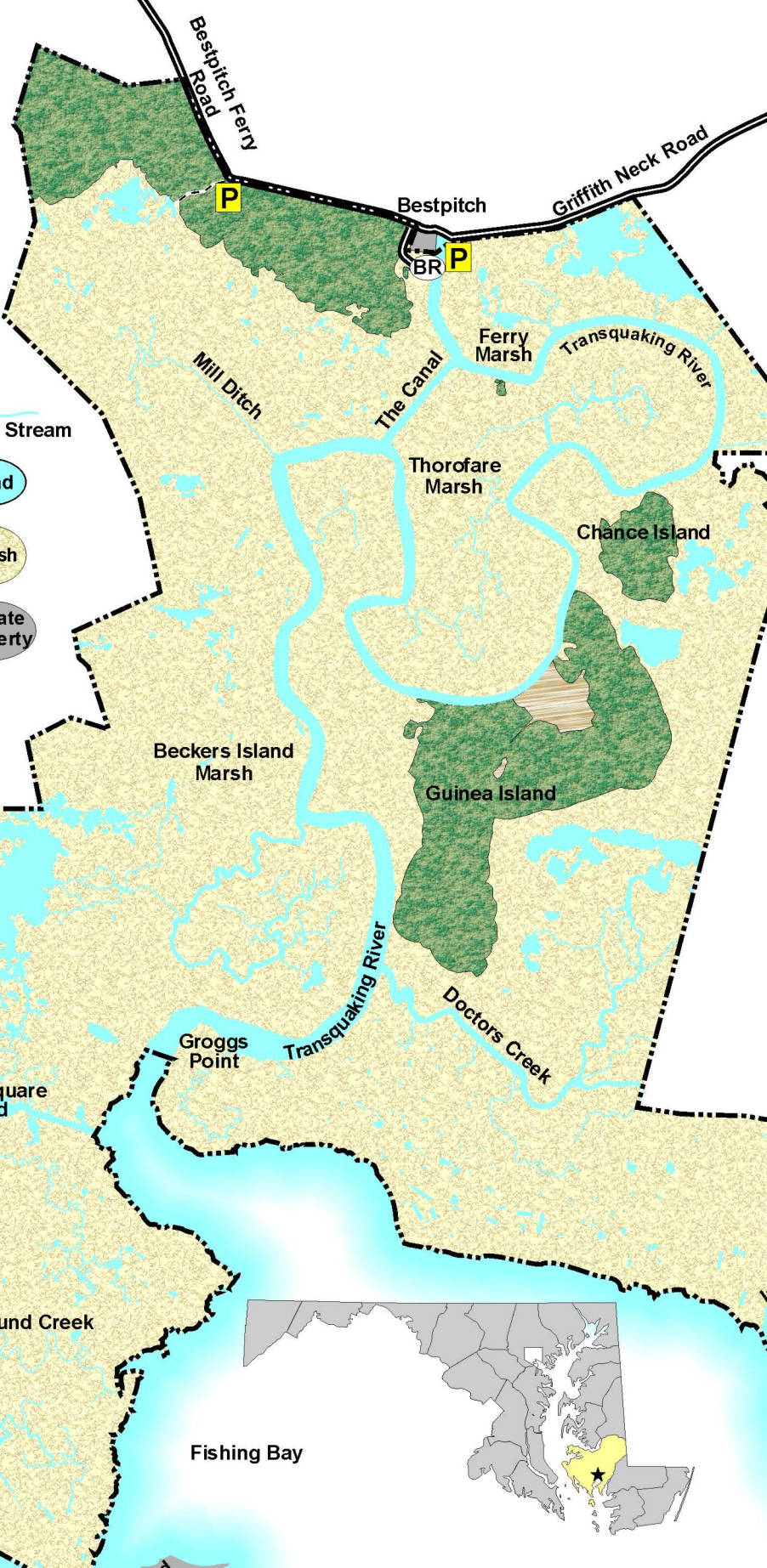


Creek or Stream

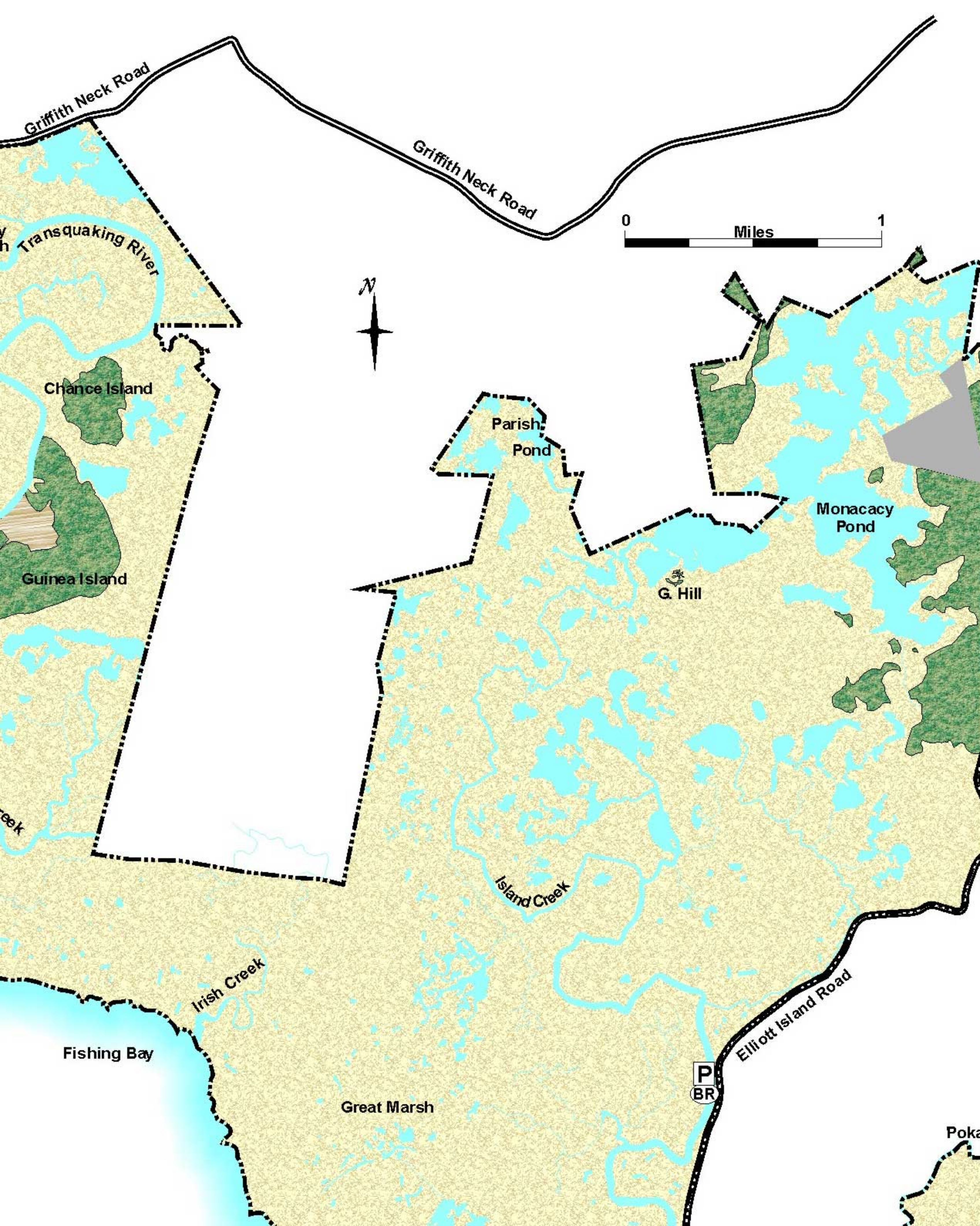
Pond

Marsh

Private  
Property







Griffith Neck Road

Griffith Neck Road

0 Miles 1



Transquaking River

Chance Island

Guinea Island

Parish Pond

Monacacy Pond

G. Hill

reek

Island Creek

Irish Creek

Fishing Bay

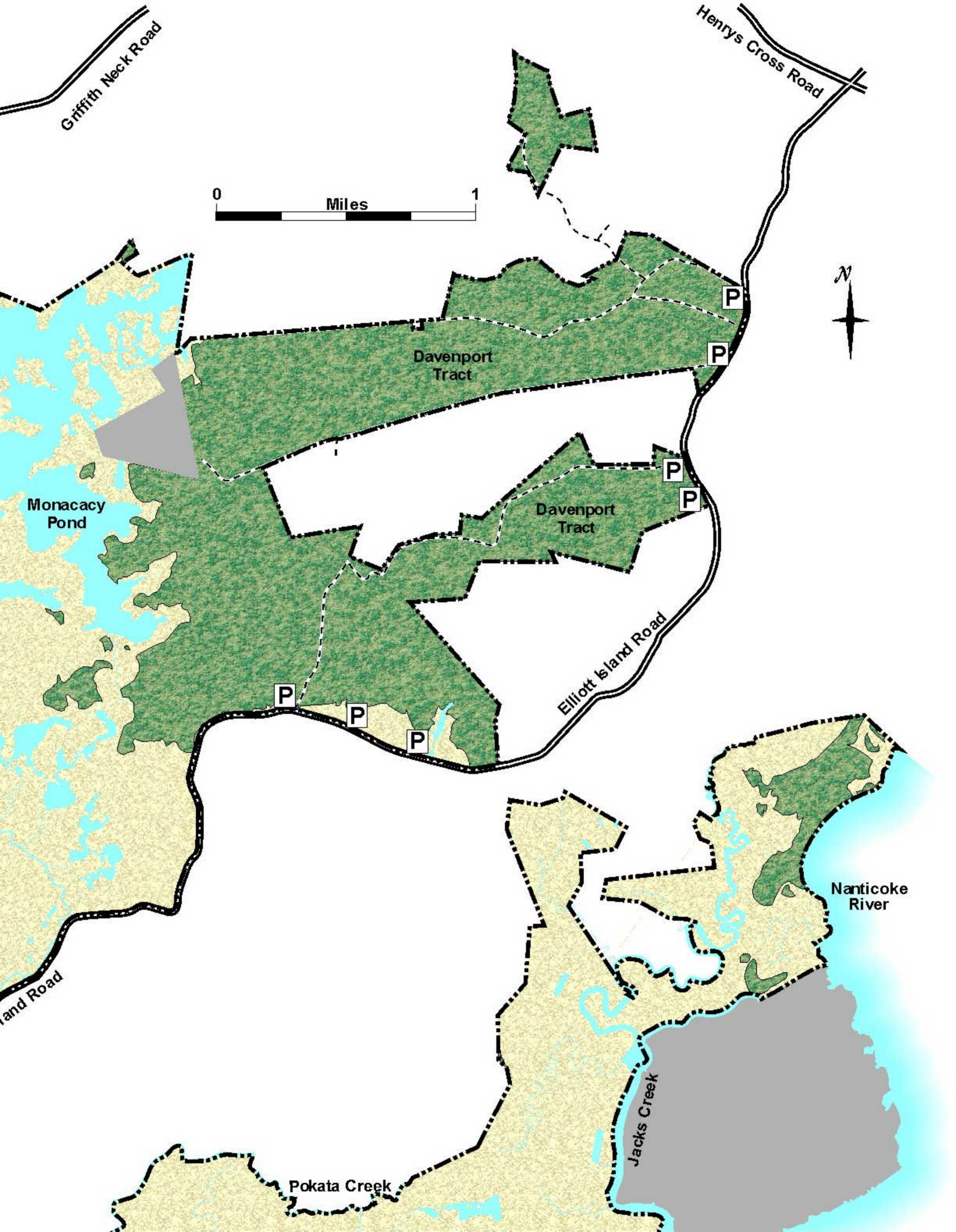
Great Marsh

P BR

Elliott Island Road

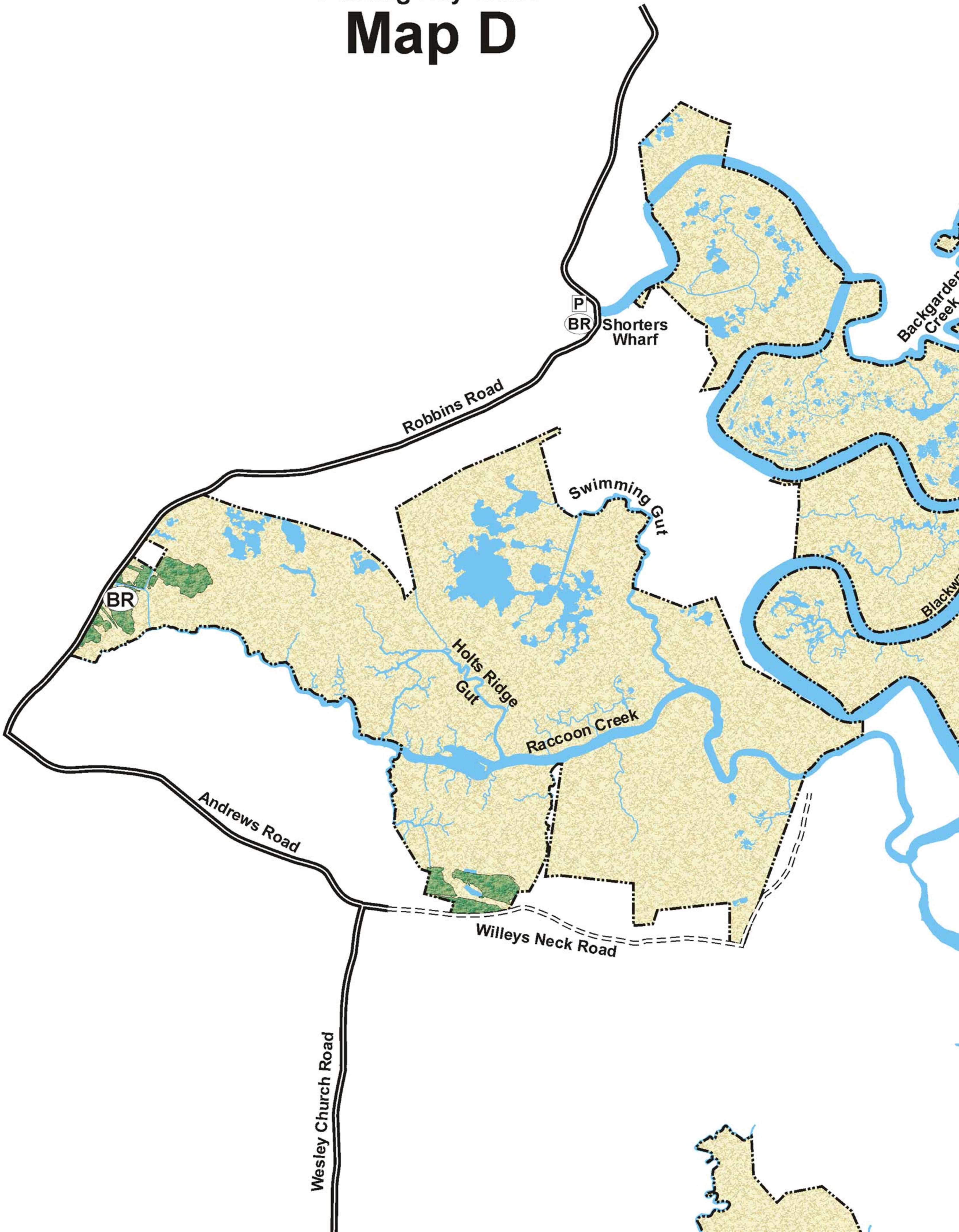
Poka





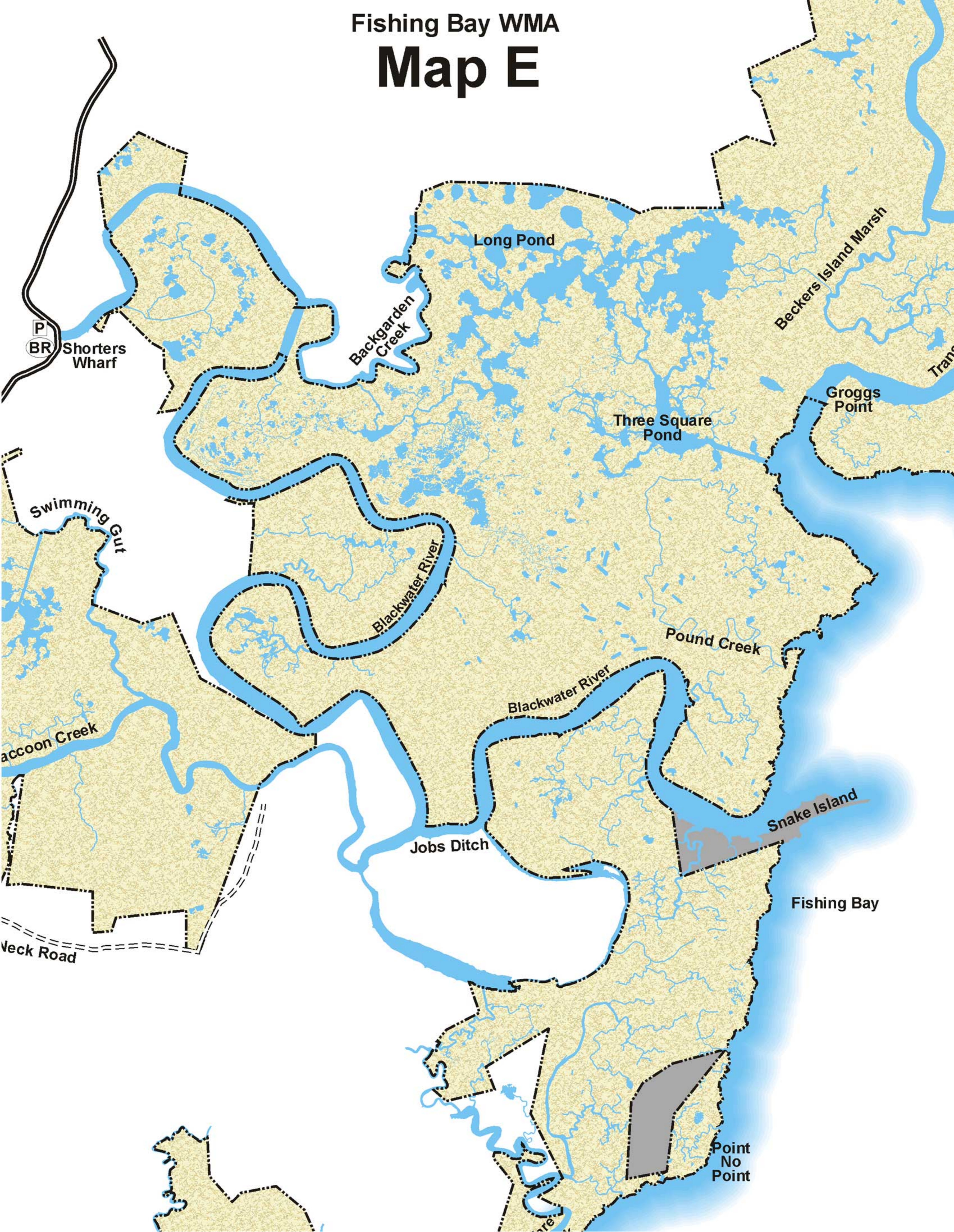


# Fishing Bay WMA Map D





# Fishing Bay WMA Map E





# Fishing Bay WMA Map F





# Fishing Bay WMA Map G





# Fishing Bay WMA

## Map H





# Fishing Bay WMA Map I







Fishing Bay WMA  
**Map J**