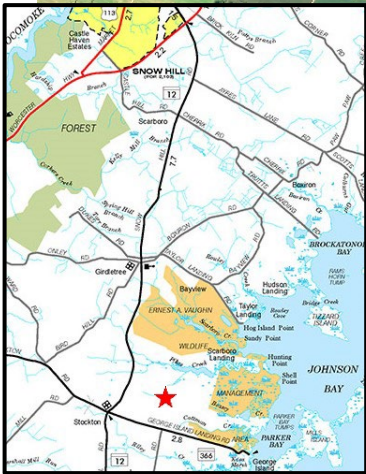
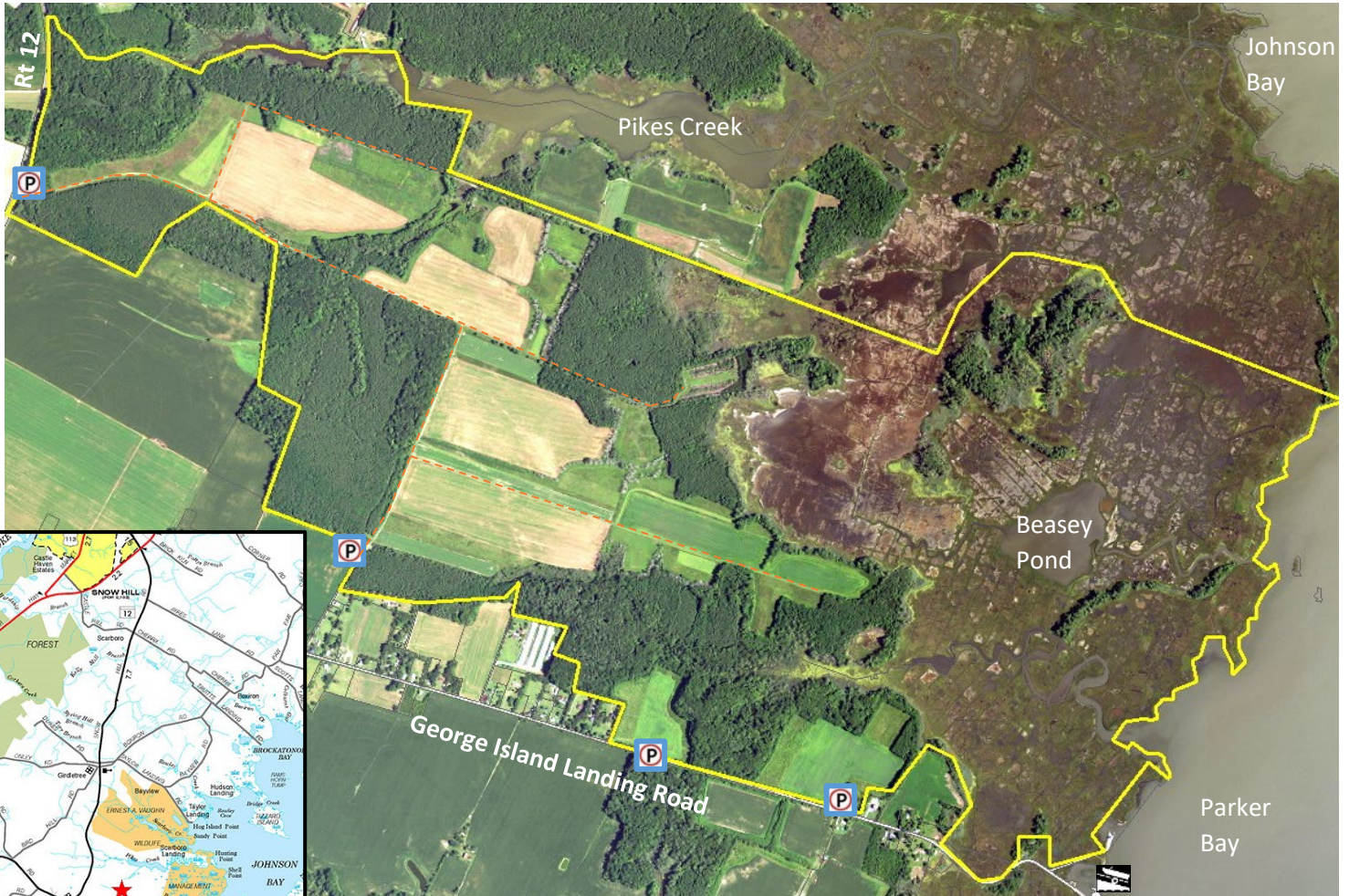






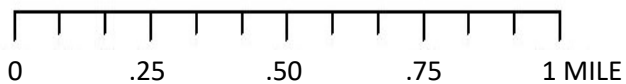
E.A. Vaughn WMA (South)

Wes Moore Governor
Josh Kurtz Secretary



Legend

-  WMA Boundary (2,630 acres)
-  Trails
-  Parking
-  Boat Ramp



Wildlife and Heritage Service
Wellington WMA
32733 Dublin Road
Princess Anne, Md. 21853
(410) 651-2065
dnr.maryland.gov

October 2022