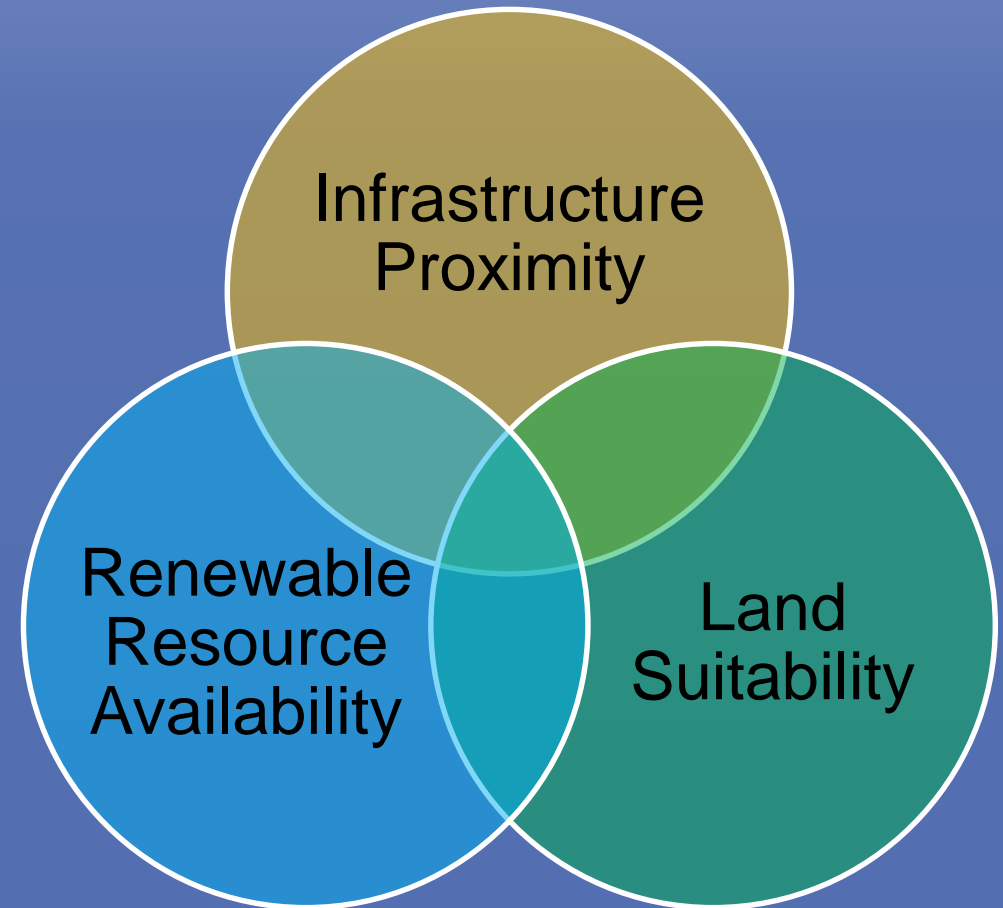
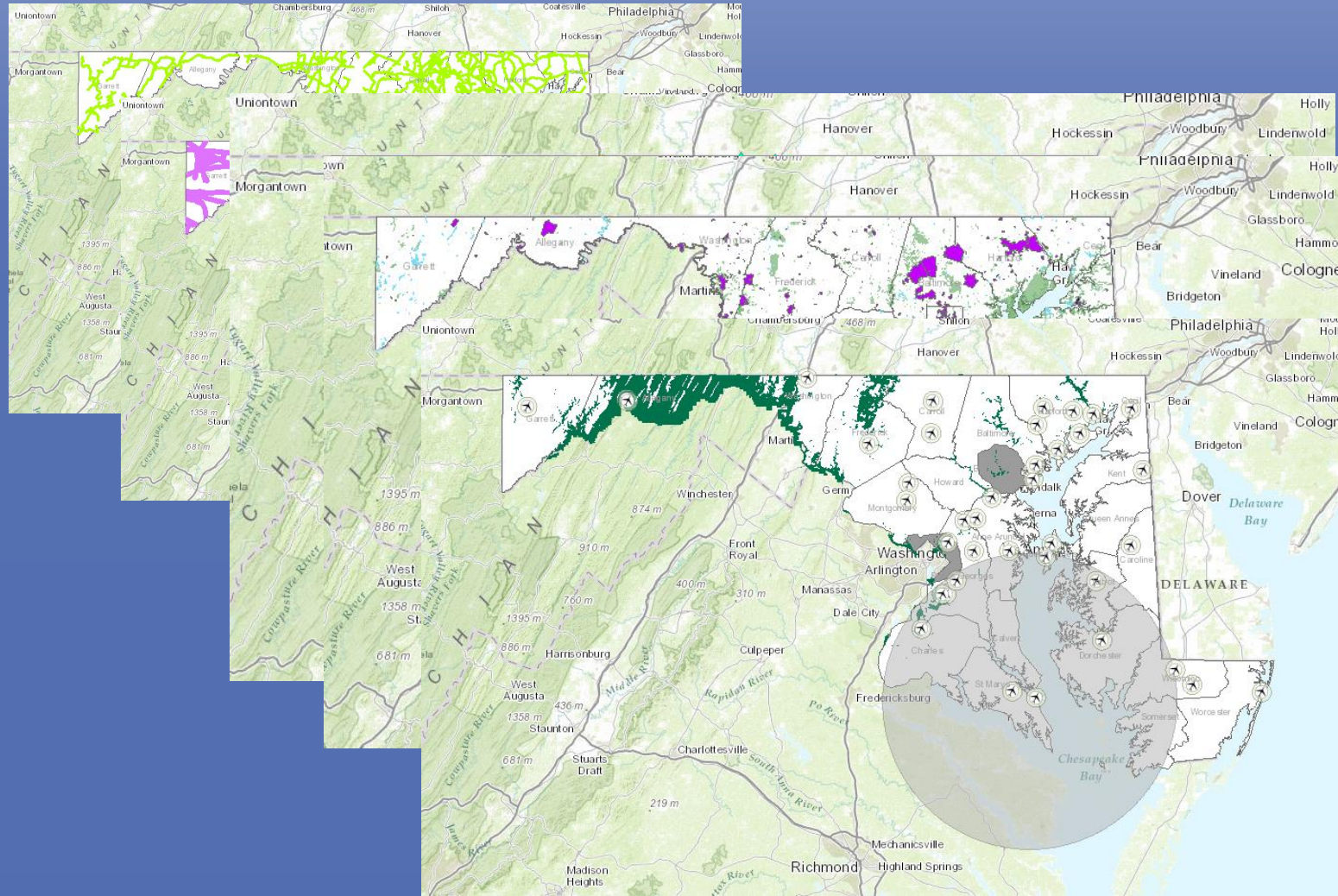


SmartDG+ is not a specific site selection tool. SmartDG combines information to save time and make better decisions about where to focus further siting assessments.



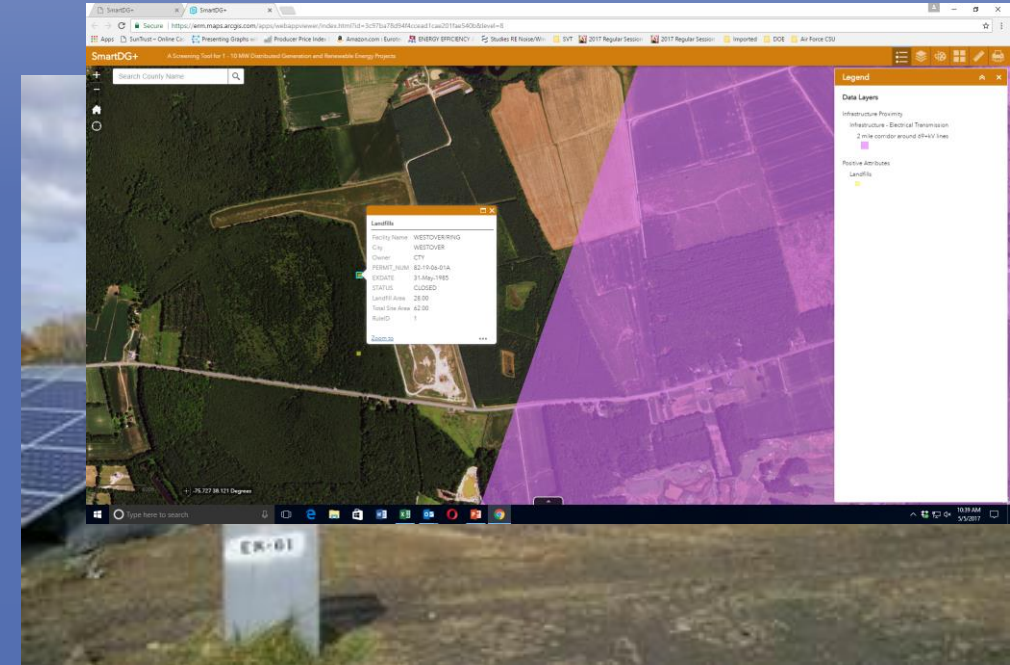
SmartDG+ Screen Shots



Looking to the Future: Making smarter decisions re: new and underutilized sites and generation technologies that could shape Maryland's energy future.

Underutilized Properties

- Drawing from EPA and MDE programs, as well as economic development research
- Updating original brownfield lists on a county-by-county basis for potential generation sites
- Identifying gray-field sites on a county-by-county basis
- Reviewing the data with county representatives to ensure accuracy



Howard County New Cut Road
Landfill Solar Energy Project

Local Zoning Update

- Researching recent changes
- Conducting meetings with local governments to ensure that zoning (and other) information in SmartDG+ is current



A More Robust Smart DG+ for Use by Stakeholders



Other Enhancements

- Adding new data layers for screening purposes (prime agricultural land, Maryland Heritage Areas, Scenic Byways)
- Developing screening criteria for additional technologies (batteries, poultry litter, biomass)
- Incorporating additional dynamic, user-friendly features
- Providing educational tutorials/videos

December 2017 Roll-out

Questions?

