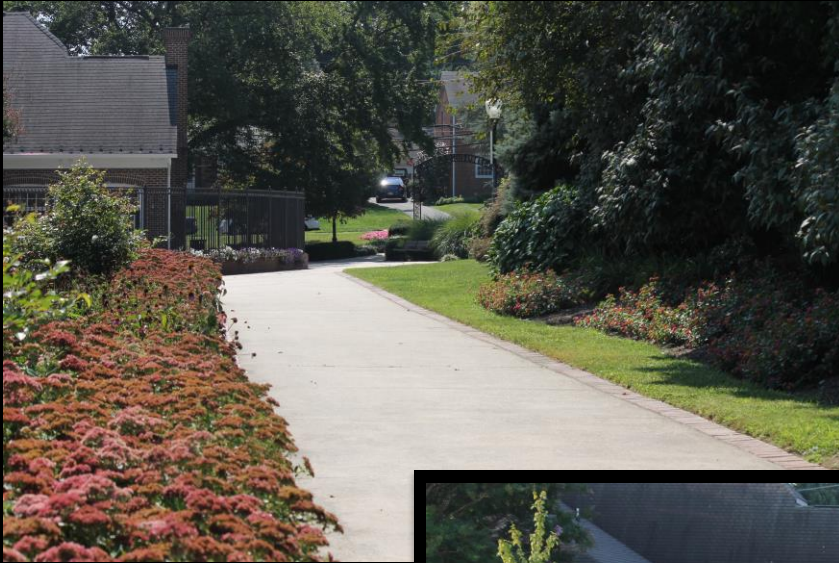


NATIVE PLANTS: Cultivating Stewardship



Constitution Gardens Park
City of Gaithersburg, MD



August 2104



August 2105

Constitution Gardens Park

City of Gaithersburg, MD

Why Native Plants?



- True ‘sense of place’ rooted in regional ecology – patterns, processes, and faunal interactions
- Criticality to the Food Chain
- Change aesthetic paradigms and regenerative trajectory of human-dominated landscapes
- Foster environmental stewardship through year-round exposure, experience and observation

It’s not all about US

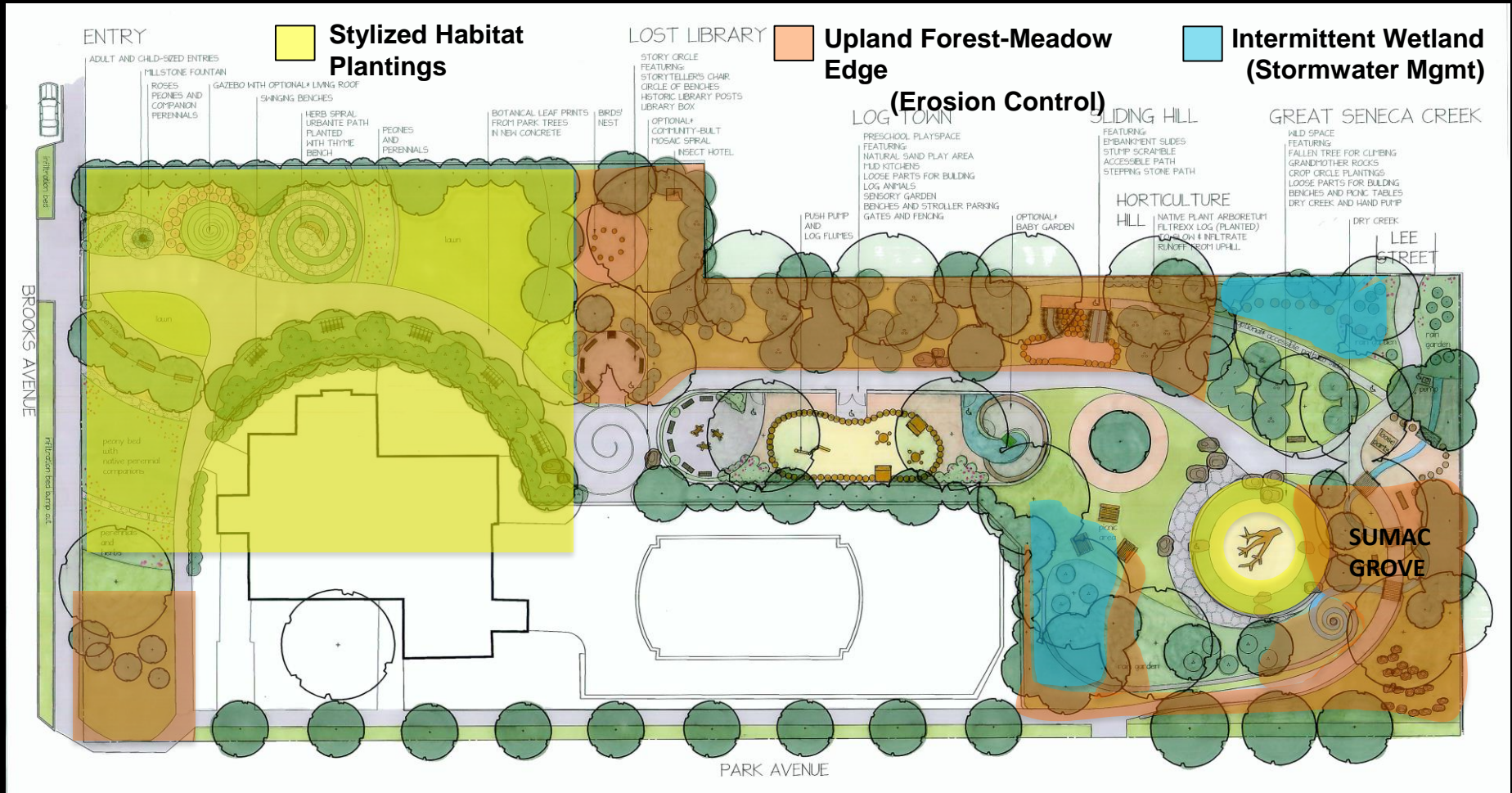
“One way to open your eyes is to unnoticed beauty is to ask yourself, ‘What if I had never seen this before? What if I knew I would never see it again?’” - Rachel Carson, The Sense of Wonder

The Inspiration ...



Hoyle's Mill Conservation Park, Boyds, MD

The Design ... Same Plant Palette, Multiple Functions



Formal



Naturalistic ("Wild")

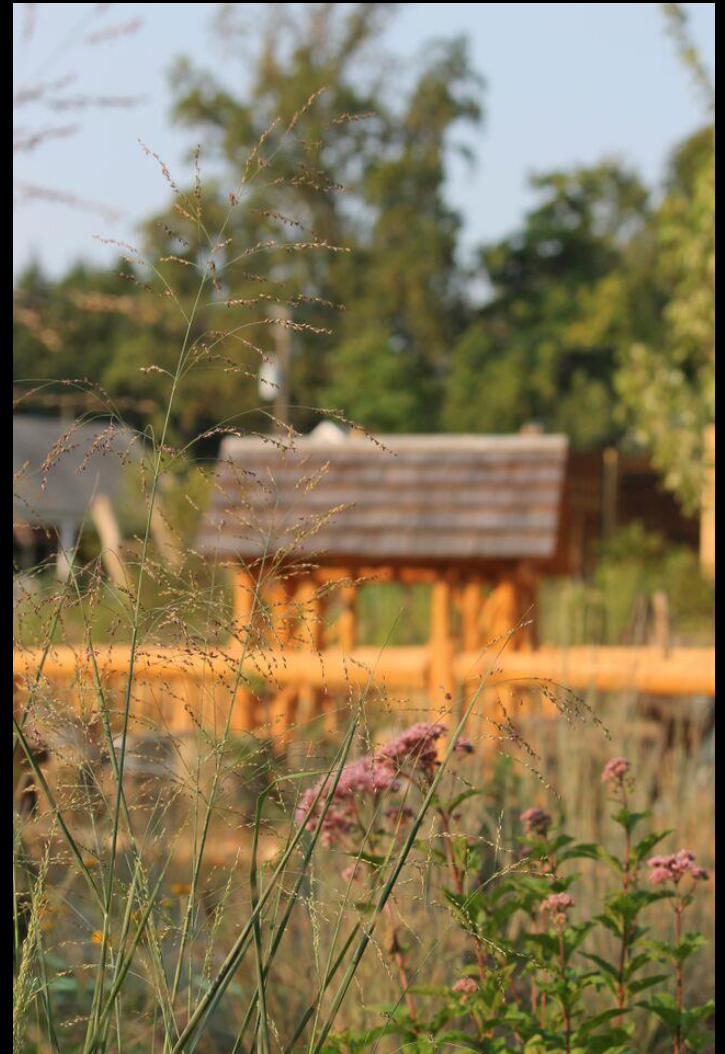
Plant Selection Practicalities

- Exposed Site Conditions
- Commercial Availability
- Low-maintenance
- Deer Pressure
- Public Safety & Sight Lines



Plant Selection Goals

- Habitat Building
- Biodiversity
- Grounding Nature Play Elements
- Engage the Senses



Species Diversity

■ 76 Native Species (97.4%)

TREES

LARGE/CANOPY

Acer rubrum (Red Maple)
Betula nigra (River Birch)
Celtis occidentalis (Hackberry) □
Nyssa sylvatica (Black Gum)
Quercus alba (White Oak)
Quercus bicolor (Swamp White Oak)
Quercus imbricaria (Shingle Oak)

SMALL/UNDERSTORY

Amelanchier canadensis (Serviceberry)
Carpinus caroliniana (American Hornbeam)
Cercis canadensis (Eastern Redbud)
Chionanthus virginicus (Fringetree)
Cornus florida (Flowering Dogwood)
Rhus copallina (Winged Sumac)
Rhus typhina (Staghorn Sumac)
Sassafras albidum (Sassafras)
Thuja occidentalis (Arborvitae)

VINES

Lonicera sempervirens (Coral Honeysuckle)
Passiflora incarnata (Passionvine)

□ Specific Host Plant

SHRUBS

Aronia arbutifolia (Red Chokeberry)
Aronia melanocarpa (Black Chokeberry)
Ceanothus americanus (New Jersey Tea)
Cephalanthus occidentalis (Buttonbush)
Clethra alnifolia (Sweet Pepperbush)
Ilex glabra (Inkberry)
Itea virginica (Virginia Sweetspire)
Lindera benzoin (Spicebush)
Myrica pensylvanica (Northern Bayberry)
Rhus aromatica (Fragrant Sumac)
Sambucus canadensis (Common Elderberry)
Rhododendron periclymenoides (Pinxterbloom)
Vaccinium corymbosum (Highbush Blueberry)
Viburnum acerifolium (Maple-Leaf Viburnum)
Viburnum nudum (Smooth Witherod)

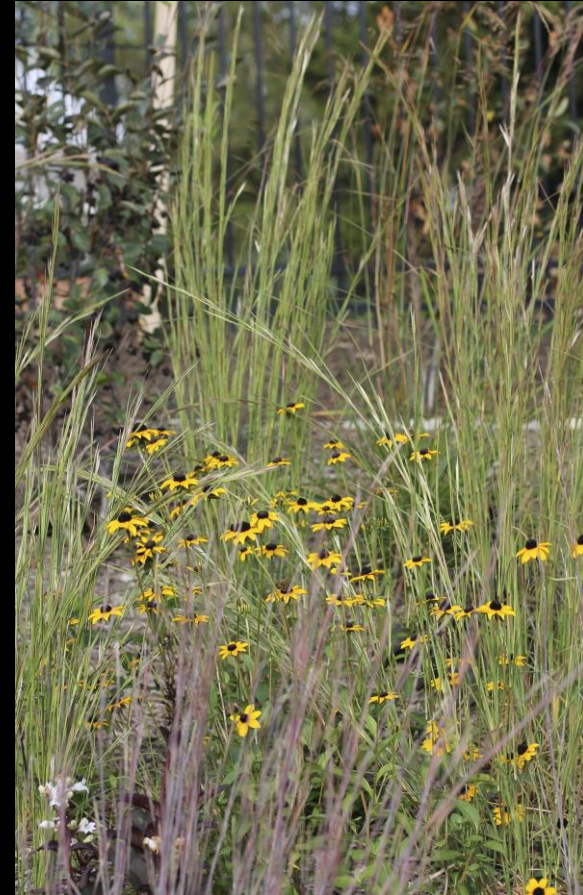
GRASSES

Andropogon virginicus (Broomsedge)
Chasmanthium latifolium (River Oats)
Deschampsia cespitosa (Tufted Hairgrass)
Eragrostis spectabilis (Purple Lovegrass)
Panicum virgatum (Switchgrass)
Schizachyrium scoparium (Little Bluestem)
Sorghastrum nutans (Indiangrass)
Sporobolus heterolepis (Prairie Dropseed)

FORBS

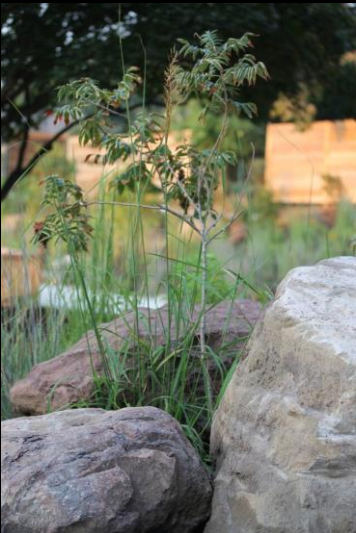
Aquilegia canadensis (Wild Columbine) □
Asclepias incarnata (Swamp Milkweed) □
Asclepias syriaca (Common Milkweed) □
Asclepias tuberosa (Butterfly Weed) □
Chelone glabra (Turtlehead) □
Coreopsis verticillata (Threadleaf Tickseed)
Echinacea purpurea (Purple Coneflower)
Eupatorium coelestinum (Hardy Ageratum)
Eupatorium fistulosum (Hollow-Stem Joe Pye Weed)
Eupatorium hyssopifolium (Throughwort)
Eupatorium maculatum (Spotted Joe Pye Weed)
Heuchera villosa var. *villosa* (Hairy Alumroot)
Iris versicolor (Northern Blue Flag)
Liatris spicata (Blazing Star)
Monarda didyma (Bee Balm)
Monarda fistulosa (Wild Bergamot)
Penstemon digitalis (Foxglove Beardtongue)
Phlox paniculata (Garden Phlox)
Pycnanthemum flexuosum (Appalachian Mountain Mint)
Pycnanthemum muticum (Blunt Mountain Mint)
Ratibida pinnata (Grey-Headed Coneflower)
Rudbeckia fulgida var. *fulgida* (Black-Eyed Susan)
Senecio aureus (Golden Ragwort)
Solidago caesia (Blue-Stemmed Goldenrod)
Solidago odora (Anise Goldenrod)
Solidago rugosa (Rough-Stemmed Goldenrod)
Solidago sphacelata (Autumn Goldenrod)
Symphiotrichum laeve (Smooth Aster)
Vernonia noveboracensis (New York Ironweed)
Viola sororia (Common Violet)

Horticulture Hill

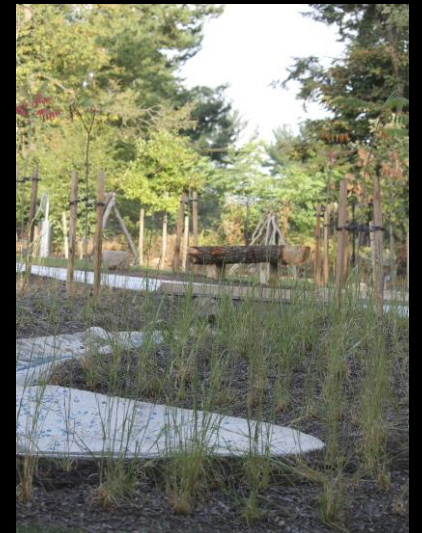


Go Big or Go Home ...

The Sumac Grove



- Wildlife Value
- Form & Texture
- Erosion Control
- Year-round Interest

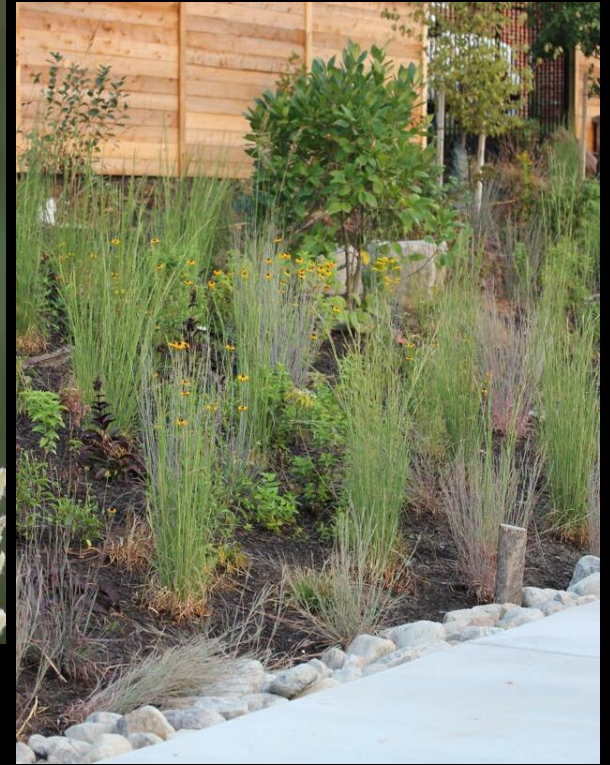


Go Big or Go Home ...

The Milkweeds



It worked!!!



- Three Species
 - (Swamp Milkweed, Common Milkweed, Butterfly Weed)
- Wildlife Value
- Specific Larval Host Plants
- Multi-season Interest



Phenology – Four Seasons of Learning



Respect the Beauty of the Brown...



Hackberry bark



Joe Pye Weed among grasses

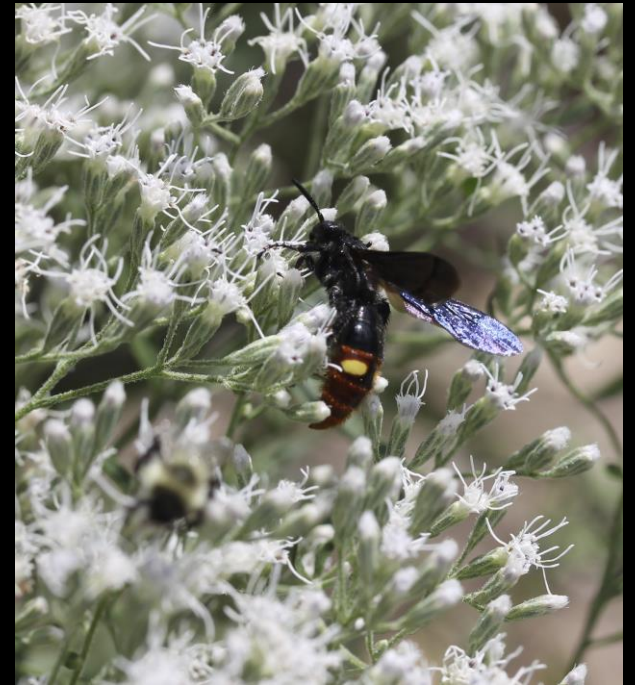


Shingle Oak leaves



Black-Eyed Susan seedheads

When a Plan Comes Together ...



Connections to Built Elements ...



“When we see land as a community to which we belong, we may begin to use it with love and respect.” - Aldo Leopold, foreword to A Sand County Almanac (1949)



Constitution Gardens Park
City of Gaithersburg, MD