

DNR's Land Acquisition and Planning Unit

State of Conservation Programs



LAP Mission



Through **six different programs**, LAP works to advance:



Land Conservation of natural areas, wildlife habitat, working and natural resources as well as public recreational opportunities.

LAP Conservation Programs



- Rural Legacy Program
- CREP Permanent Easement Program
- Land and Water Conservation Fund
- Program Open Space Stateside
- Program Open Space Local
- Community Parks and Playgrounds



LAP Partnerships



In order to administer these different programs and consistent with authorizing statutes **LAP works regularly in partnership with land trusts and local governments** in all programs.



Rural Legacy Program



- Established in 1997.
- a grass-roots program that **protects working farms and forests** through the purchase of conservation easements to support Maryland's resource-based economy.

Rural Legacy Conservation Easements



Basic Provisions:

- Restrict residential development and commercial activities to agriculture;
- Prohibit industrial activities;
- Require stream buffers (100 foot preferred)
- Require Forest Stewardship Plans and forest non conversion
- Impervious surface limitations

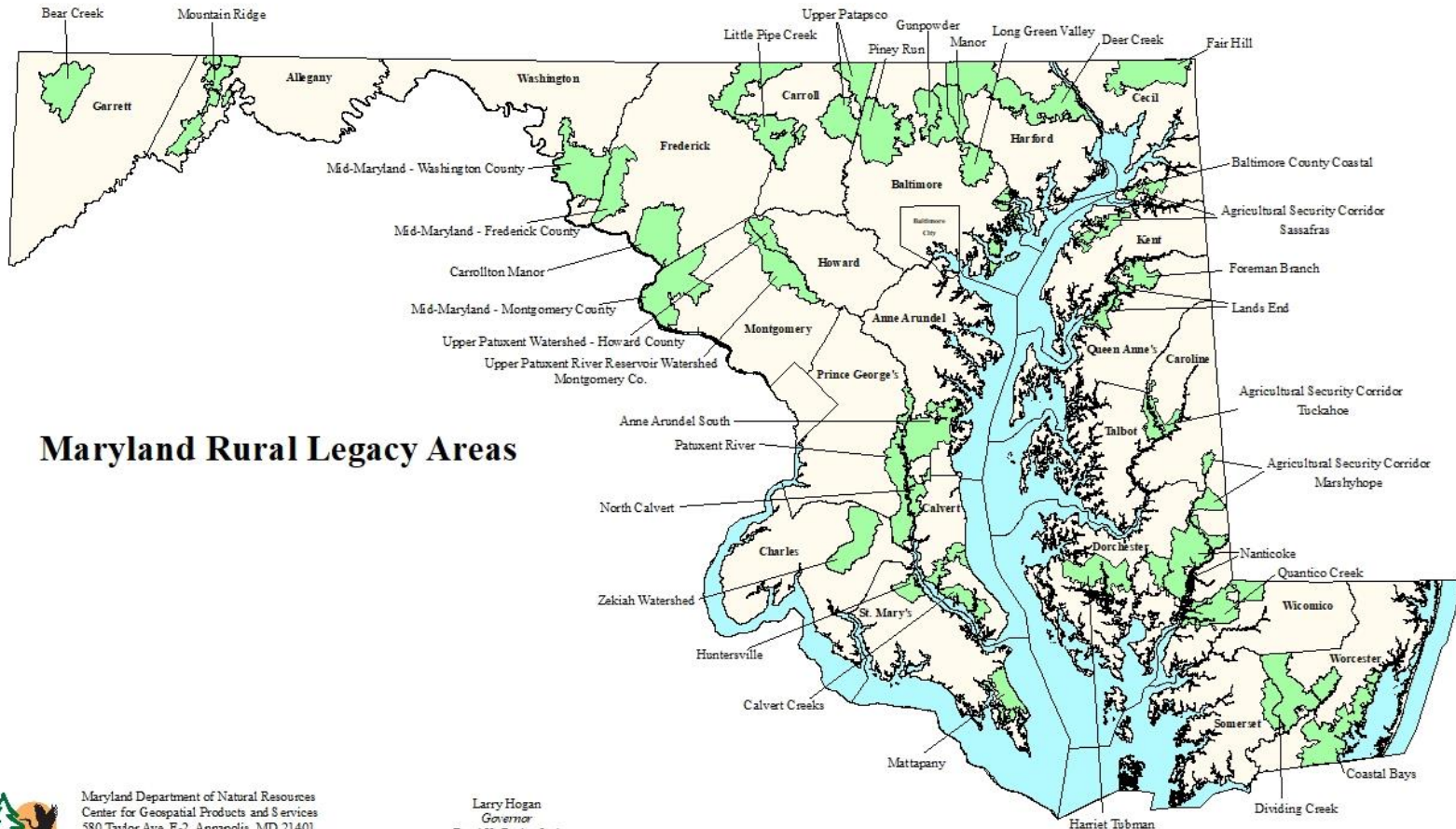
Purpose: To Protect Working Lands *and* Natural Resources in Perpetuity

Rural Legacy Program



- A property must be located within a designated **Rural Legacy Area**.
- There are 32 locally-designated **Rural Legacy Areas**, with at least one Rural Legacy Area in every county in the State.

Rural Legacy Program



Maryland Rural Legacy Areas



Maryland Department of Natural Resources
Center for Geospatial Products and Services
580 Taylor Ave. E-2 Annapolis, MD 21401
410-260-8985 or 1-877-620-SDNR x8985
dnr.maryland.gov
DNR April 2019

Larry Hogan
Governor
Boyd K. Rutherford
Lt. Governor
Jeannie Haddaway-Riccio
Secretary



Rural Legacy Program



- The program relies partnerships and allows those who know the landscape best – **land trusts and local governments (Rural Legacy Sponsors)** – to determine the best way to protect the landscapes that are critical to our economy, environment and quality of life.
- The location and boundaries of each Rural Legacy Area is determined by the **Rural Legacy Sponsors.**
- Each Rural Legacy Area has a designated **Sponsor** approved by the County.

Rural Legacy Program



32 Rural Legacy Areas across the State:

- 11 administered by land trust Sponsors in cooperation with the County;
- One administered by Soil Conservation District Sponsor;
- 20 administered by County Sponsors

Rural Legacy Program



All Sponsors with Annual Grants are eligible for:

- Administrative fee
- Program Compliance
- Reimbursed for their incidental costs

As of 2019, **land trusts** have worked on **over 300 Rural Legacy conservation easement projects.**

Rural Legacy Program



Accomplishments:

- Over 100,000 acres protected to date
- Designation of the new Harriet Tubman Rural Legacy Area in 2018.



CREP Permanent Easement Program



Two tiered program to improve water quality and wildlife habitat by compensating farmers for removing highly erodible cropland and marginal pastureland from production and implementing BMPs:

1. Landowner enters into **10-15 year Federal CREP/CRP contracts** with the Farm Service Agency (USDA).

1. In targeted counties, these landowners may then choose to make their **permanent protect the land by selling a CREP conservation easement to the State.**



CREP Permanent Easement Program



Partnerships are set up to mirror Rural Legacy

- In the targeted counties, DNR works with land trusts and local governments as the CREP Sponsor.
- All CREP Sponsors with an MOU with DNR are eligible for:
 - Administrative fee
 - Program Compliance
 - Reimbursed for their incidental costs

CREP Permanent Easement Program

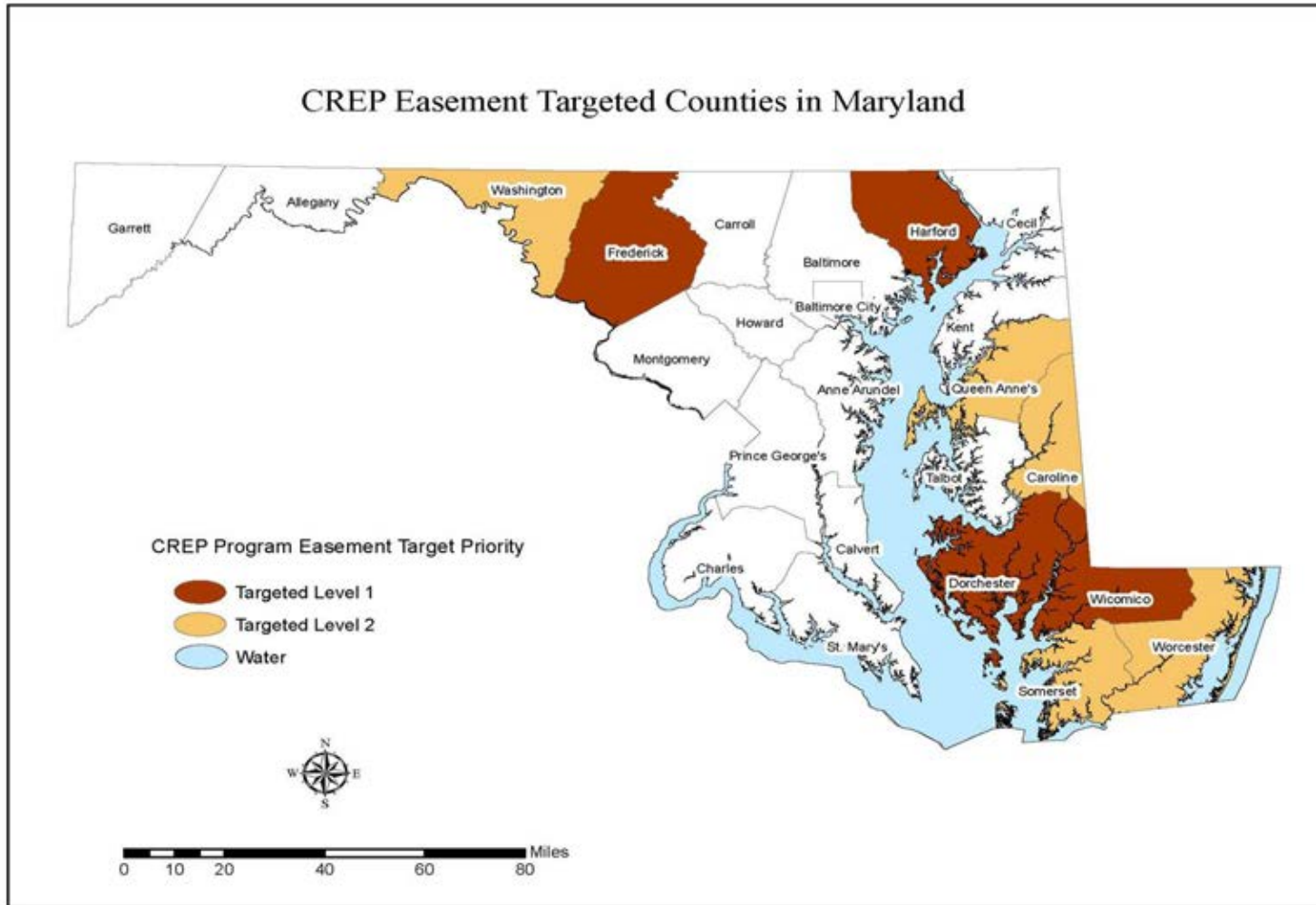


- Program is **targeted** to areas where conservation will have the greatest impact - **watersheds with highest ecological value and high phosphorus and nitrogen loading.**
- **11,000 acres** protected to date.

CREP Permanent Easement Program



CREP Easement Targeted Counties in Maryland



Program Open Space Stateside



- Established in 1969.
- Preserves **natural areas for public recreation and watershed and wildlife protection** across Maryland through the acquisition of fee simple land and conservation easements.
- Fee simple purchases are managed by DNR as State Parks, Forests, and Wildlife and Fisheries Management Areas.



POS Stateside Scorecard



All POS Stateside projects are evaluated and run through an objective vetting:

POS Scorecard

Land *(Ecological Value)*

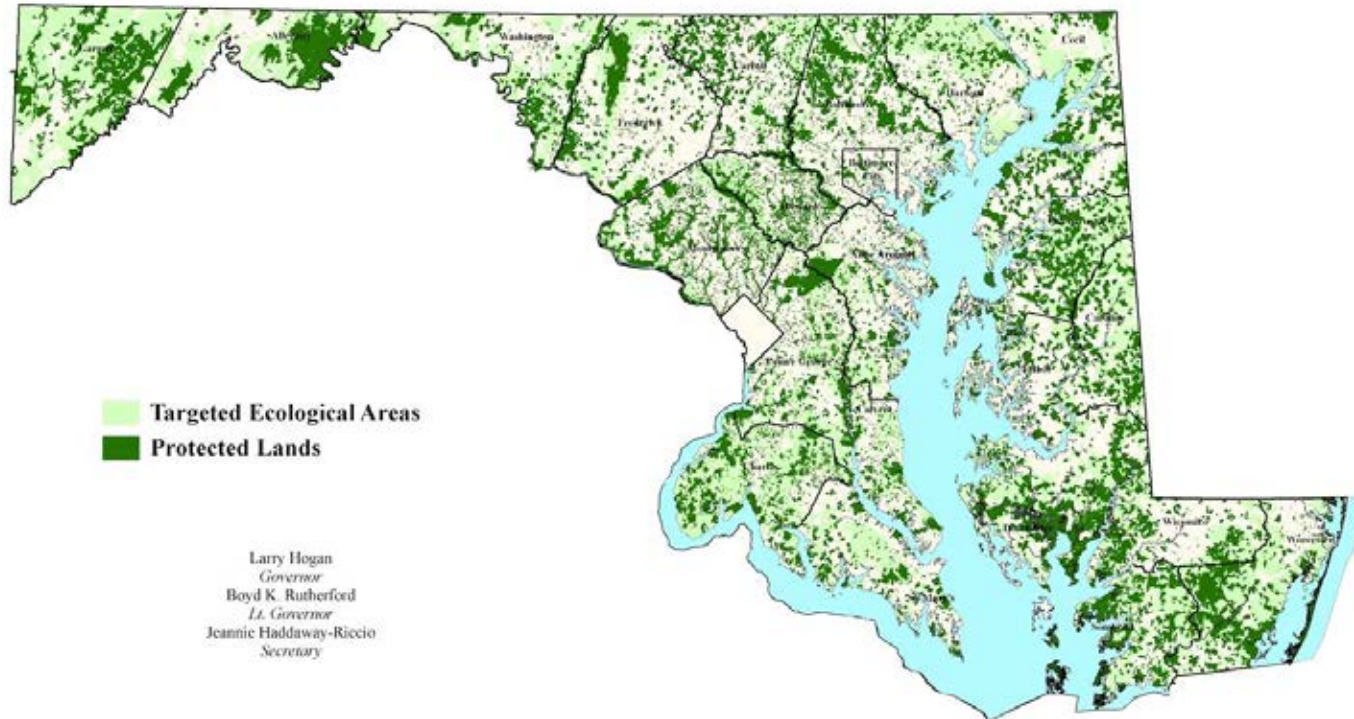
People *(Enhancing Public Access and Recreational Opportunities)*



Targeted Ecological Areas



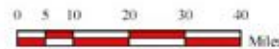
POS Stateside - Targeted Ecological Areas and Protected Lands



Larry Hogan
Governor
Boyd K. Rutherford
Lt. Governor
Jeannic Haddaway-Riccio
Secretary



Maryland Department of Natural Resources
Geospatial Information & Analysis
580 Taylor Ave. 11-2 Annapolis, MD 21401
410-260-8985 or 1-877-620-8208 s8985
dnr.maryland.gov
DNR April 2019



POS Stateside



Potential POS Stateside Projects come to DNR:

DNR staff

Land trusts

Local governments

Landowners/Realtors

POS Stateside Partnerships with Land Trusts



- LAP partners with land trusts on POS Stateside acquisitions.
- Engagement letters provide specifics of how the project and partnership will proceed for each individual acquisition.

POS Stateside Accomplishments



Accomplishments:

- **Over 340,000 acres of ecological and recreational value.**
- **In past four years, POS Stateside has worked on over 22 projects with land trusts.**

POS Stateside Accomplishments



*Recent projects completed that established **NEW** state parks and wildlife management areas for the public:*

1,172 acres in Queen Anne's County - **Browns Branch WMA.**

522 acres in Charles County - **Pope's Creek WMA.**

2,009 acres in Garrett County - **Wolf Den Run State Park.**

460 acres in Cecil County - **Bohemia River State Park.**

Program Open Space Local



- Established in 1969, POS Local provides financial and technical assistance to **counties and municipalities** for the planning, acquisition, and/or development of recreation land or open space areas.
- The Department of Budget and Management allocates POS Local funds annually to every county and Baltimore City according to a set formula.



Program Open Space Local



- Projects funded through POS Local are determined by local governments.
- A percentage of POS Local funds must be used for land acquisition.
 - According to statute and land acquisition goals set by local governments in their Local Land Preservation, Parks, and Recreation Plans.

POS Local Accomplishments



- Over 6,200 local park and recreation projects.



- Over 48,000 acres protected.

Community Parks and Playgrounds



- First funded in FY 2002
- Provides **flexible grants to municipal governments to respond to the unmet need for assistance to rehabilitate, expand or improve** existing parks and create new parks.
 - Land acquisition is eligible but focus is on development.
- Accomplishments:
 - Over 700 projects funded.
 - Over \$71 million in grant funds awarded.



Land and Water Conservation Fund



- Land and Water Conservation Fund is a **federal grant program** administered by the National Park Service.
 - provides **50/50 matching grants to state and local governments** for the purpose of **acquiring and/or developing public outdoor recreational areas and facilities.**
 - **343** projects funded in Maryland since 1965.
- Leverages Program Open Space funds
- Open project selection process for state and local projects.



Looking Forward



- **Full funding for land preservation programs**
- **Continue to work with land trust and county partners.**
- **Climate Change Adaptation easements**
- **Chesapeake Bay Agreement Land Conservation Goal**
 - **On track to protect an additional two million acres throughout the watershed by 2025.**

LAP Contacts



Heidi Dudderar, Director

Hilary Bell, Deputy Director

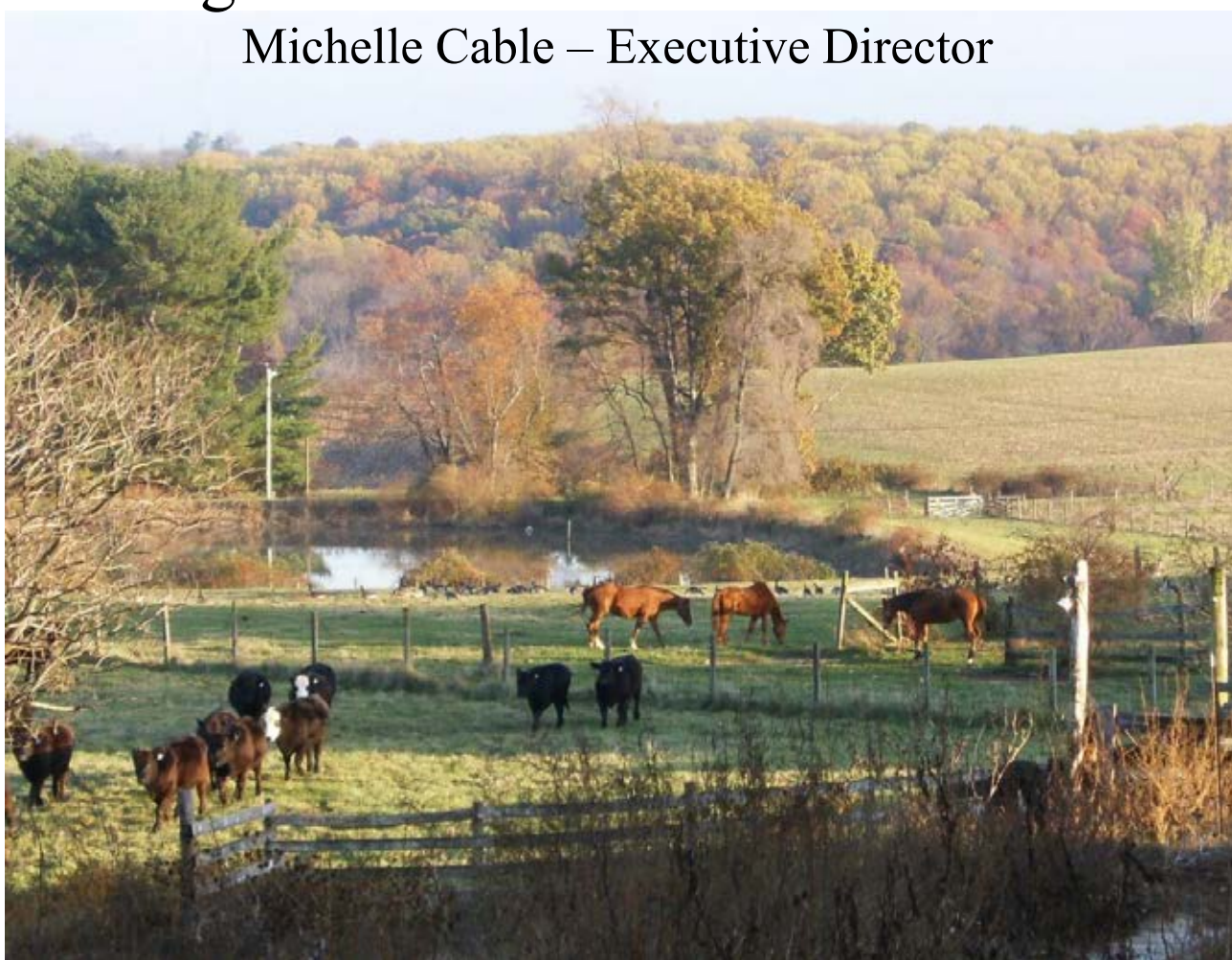
Stacy Schaefer, Associate Director

Judd Vickers, Associate Director

www.dnr.maryland.gov/land

Maryland Agricultural Land Preservation Foundation

Michelle Cable – Executive Director



The State of the State Conservation Programs
Readying Land Conservation to Meet the Future Needs of Maryland
May 16, 2019

The Maryland Agricultural Land Preservation Foundation (MALPF):

- Created in 1977 by the Maryland General Assembly as one of the first state farmland preservation programs in the country.
- Almost 40 years of purchasing easements (first easement purchased on October 11, 1980).
- One of the keys to the success of the Program is the strong State-County partnership involved, both at the financial level and staff support.
- As of December 2018:
 - Over 316,000 acres protected (more than 2,300 farms)
 - Total public investment of \$740 million

Statutory Objective

- MALPF's primary purpose is to: *preserve productive agricultural land and woodland to provide for the continuing production of food and fiber for the citizens of Maryland.*
- Easements are perpetual. Owners are able to continue using the property for agricultural purposes while restricting the land from **Non-Agricultural** Commercial, Residential and Industrial development.



Funding Sources

- Real Estate Transfer Taxes (RETT) ($\frac{1}{2}$ of 1% of the value of the transaction). MALPF receives 17.05% of this dedicated revenue source.
- Agricultural Transfer Taxes (3-5% of the value of the land, depending on size and improvements).
Certified counties retain 75% and MALPF gets 25%.
If not certified, counties retain 33% and MALPF gets 66%.
- MALPF's Matching Funds Program and 100% County Funds. A portion of the RETT is used to match county funds (60/40 split). Counties can also supply additional funds for easements.



Permitted Uses

Ongoing challenge of how to manage and enforce a perpetual easement in the ever-changing and evolving industry of agriculture.

Landowners can engage in farm or forest related operations on the easement property. Some examples of operations/activities that would require permission are:

- Bed and Breakfast
- Creamery
- Agri-tourism
- Winery/Brewery
- Farm market/roadside stand
- Food preparation & on-site sales/seating
- Ag-related commercial events (spring/fall festivals)
- Special Occasions Events (2018 law)



Program Challenges

- Funding – always more interest than money
 - FY 2019 back to annual application cycle, fully funded
 - Considering ways to shorten transaction timeline, including valuation process
- Monitoring & Enforcement – every easement acquired means more responsibility for the Program
- Competing interest for farmland:
 - Commercial solar energy projects
 - Overlay easement uses (stream mitigation/restoration)
- How to incorporate climate adaptation / sea level rise impact into MALPF easement assessment?



Maryland Agricultural Land Preservation Foundation
michelle.cable@maryland.gov
410-841-5860
www.mda.maryland.gov/malpf





MD Forest Legacy Program

Colleen Kenny

MD DNR Forest Service

May 16, 2019



Federal Program

- Voluntary US Forest Service program
- 49 participating states and 5 territories
- Goal: Identify and conserve environmentally important forests that are threatened by conversion.
 - Provide economic incentives to landowners to keep forests as forests, encouraging sustainable management and strong forest product markets.

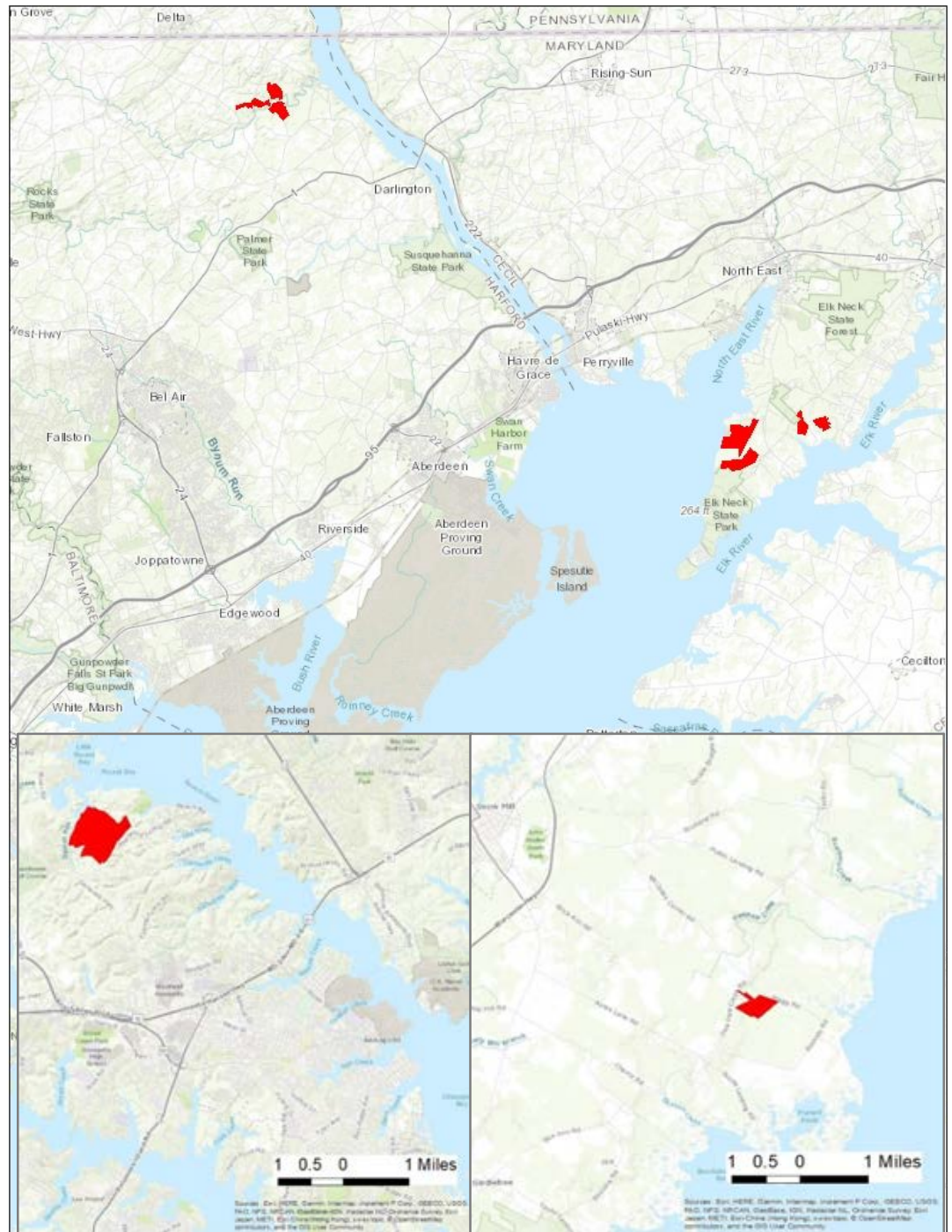


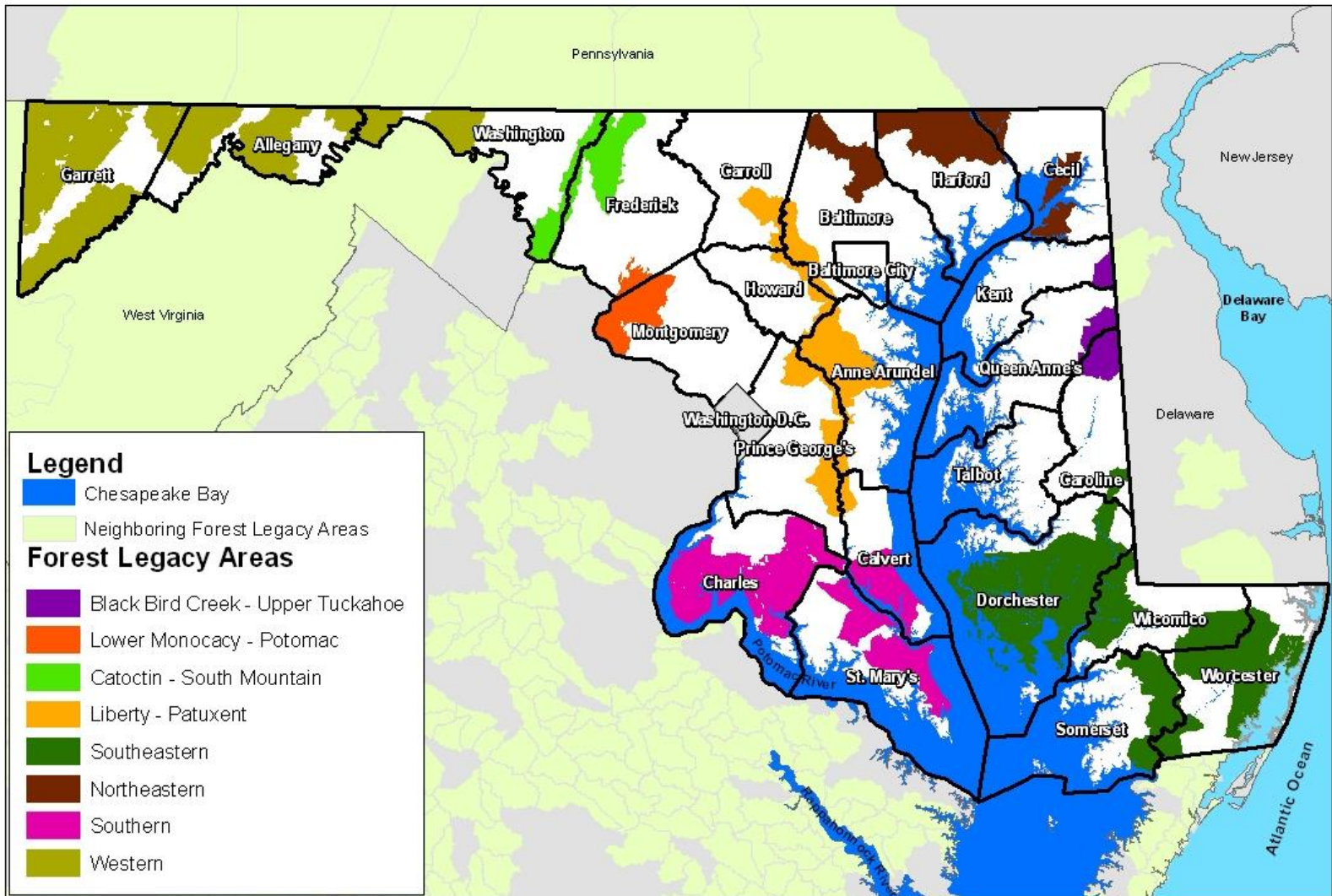
Program Basics

- States identify eligible “Forest Legacy Areas”
- State ranked projects → National review panel
- Up to 3 projects annually per state
 - Not to exceed \$7 million for any one project
 - Not to exceed \$10 million total
- Up to 75% federal funding, 25% non-federal match
- \$60-70 million/year
- Fee simple or conservation easement (CE in MD)

Current Projects

- 17 tracts
- Over 2,000 acres





Legend

- Chesapeake Bay
- Neighboring Forest Legacy Areas
- Forest Legacy Areas**
- Black Bird Creek - Upper Tuckahoe
- Lower Monocacy - Potomac
- Catoctin - South Mountain
- Liberty - Patuxent
- Southeastern
- Northeastern
- Southern
- Western

Maryland Forest Legacy Areas



MARYLAND
DEPARTMENT OF
NATURAL RESOURCES

Map Created: 8-28-2013 By: T. Clibbe

MARYLAND
FOREST SERVICE

Eligible

- Within a Forest Legacy Area
- 75% Forested
- Remaining 25% in compatible land use
- Minimum 5 acres

Competitive

- Larger acreage
- Combine multiple tracts
- Cost-share
- Important, threatened, and strategic



Match Options

- Bargain sale
- Non-federal funds
- Land/CE equivalent to 25% total value
 - Must be in the same Forest Legacy area
 - Close during acquisition grant period
 - Meet other Legacy req.'s

Timeline

- September- approximate deadline for applications
- November- Submit to national panel
- January- National panel
- Spring/Summer- Funding notification (varies widely!)
- 2 year acquisition grants

3+ years from start to close



Future Goals

- Expand eligible Forest Legacy Areas
- Increase partner cooperation and landowner participation
- Take advantage of new cost-share opportunities

To Participate:

- Contact the MD coordinator
- Site visit
- Fill out landowner application (as much as possible)-
<http://dnr.maryland.gov/forests/Pages/programapps/forestlegacy.aspx>



A photograph of a snowy landscape. The foreground is a flat, snow-covered field. In the background, a dense line of bare, tall trees stands against a light, overcast sky. A single log lies horizontally on the right side of the snowfield.

Questions?

Colleen Kenny

410-260-8530

colleen.kenny@maryland.gov

STEWARDED PLACES AND STORIES:

THE MARYLAND HERITAGE AREAS PROGRAM



Jennifer Ruffner, Administrator

Maryland Heritage Areas Program

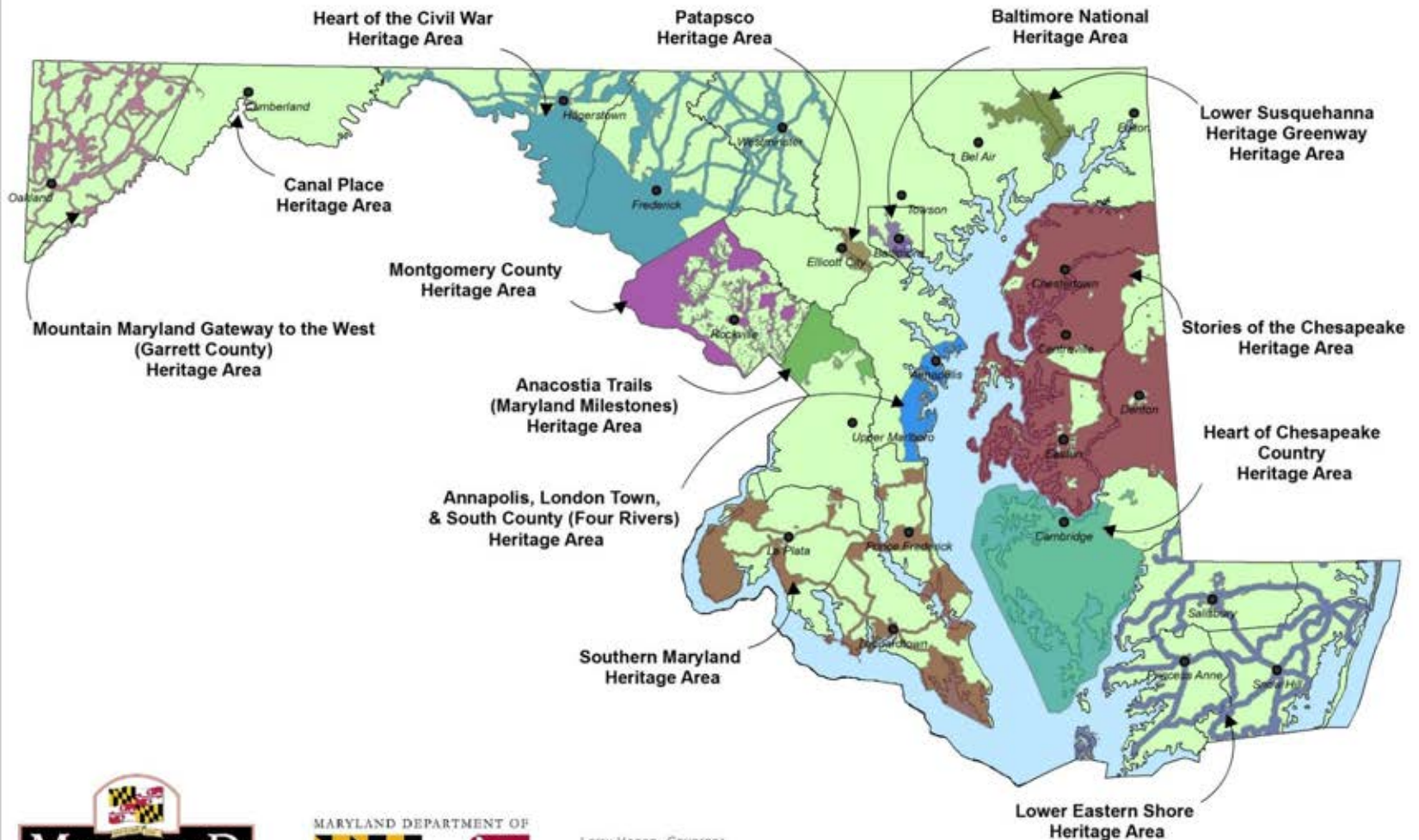
Maryland Historical Trust

Maryland Department of Planning





THE MARYLAND SYSTEM OF CERTIFIED HERITAGE AREAS



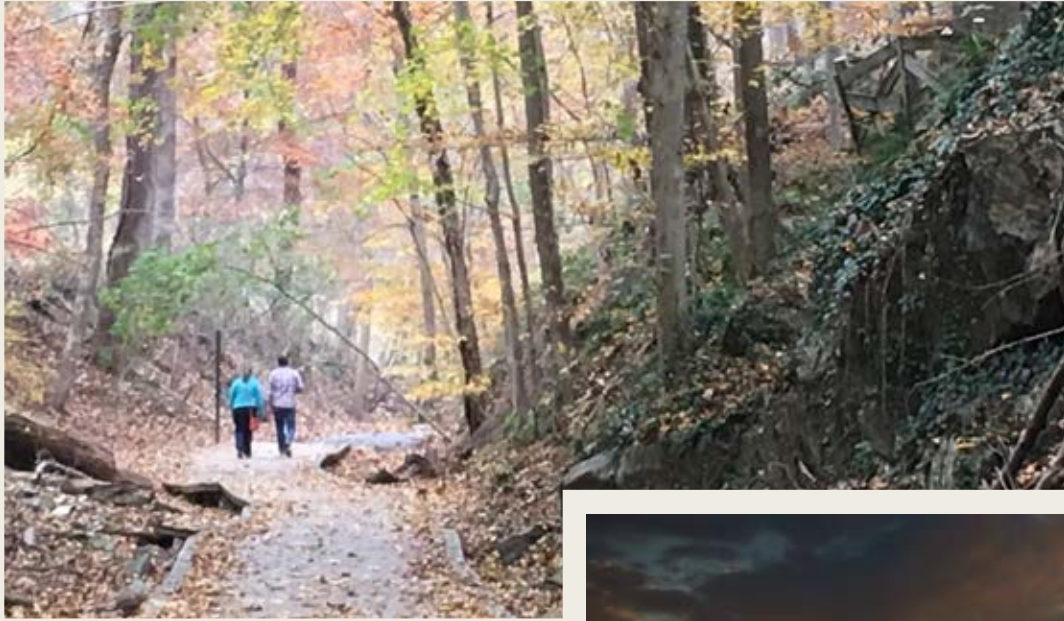
Larry Hogan, Governor
Boyd Rutherford, Lt. Governor
Robert S. McCord, Secretary
Elizabeth Hughes, Director, MD Historical Trust
Jennifer Ruffner, Administrator, MD Heritage Areas Program
Ennis Barbery Smith, Asst. Administrator, MD Heritage Areas Program

100 Community Place
Crownsville, MD 21032-2023
Call: 410-697-9591
Or visit: <http://mht.maryland.gov>



December 2018



















The Impact of Maryland Heritage Areas

\$19.8 million
in State and Local Taxes

\$4.45

Return on
Investment for
Every Dollar of
State Grant Funds

\$7.78

Support Leveraged (\$6.78 non-state) by Every Dollar of State Grant Funds

13 Heritage Areas
Across the State

23 Counties and the City of Baltimore



3,146
Jobs Created



The Maryland Heritage Areas Program supports the economic well-being of Maryland's communities by promoting, sustaining and creating place-based experiences for visitors and residents alike. These are the results of an economic impact study completed in 2017 using the IMPLAN model. The data inputs compiled by MHAA staff and included in the model were: 1) Financial data showing the amount spent on MHAA grant-funded projects from FY 2015 – FY 2017 and 2) visitation data for FY 2016 from organizations who received MHAA grants in FY 2010 – FY 2014, and the corresponding visitor spending estimates.

For more information on the program visit
<http://mht.maryland.gov/heritageareas.shtml>







Photo Credits

Images courtesy of:

- *Anacostia Trails Heritage Area*
- *Annapolis, London Town and South County Heritage Area*
- *Baltimore National Heritage Area*
 - Chang, James – Kids and Kayaks
 - Moore, Kevin – Paterson Park Pagoda
- *Canal Place Heritage Area*
- *Eastern Shore Land Conservancy*
- *Heart of Chesapeake Country Heritage Area*
- *Heart of the Civil War Heritage Area*
- *Montgomery County Heritage Area*
 - Scace, Greg – Laytonsville Barn
- *Mountain Maryland Gateway to the West Heritage Area*
- *Patapsco Valley Heritage Area*
- *Phillips Wharf Environmental Center*
- *Southern Maryland Heritage Area*
- *Stories of the Chesapeake Heritage Area*
- *Tilghman Watermen's Museum*



Jennifer Ruffner, Administrator
jen.ruffner@maryland.gov
410-697-9586

Ennis Barbery Smith, Assistant Administrator
ennis.smith@maryland.gov
410-697-9555

<http://mht.maryland.gov/heritageareas.shtml>



Protecting Land Forever

Programs at a Glance
May 16, 2019





Maryland Environmental Trust

- Established by the Maryland legislature in 1967, accepted first easement donation in 1972
- Governed by citizen Board of Trustees
- Staff of 12 funded through the Maryland Dept. of Natural Resources
- Protected nearly 136,000 acres statewide through use of conservation easements
- Donated easement program for Maryland –*federal and state tax benefits available to landowners*
- Legal representation by the Maryland Office of Attorney General
- Partner with non-profit land trusts to conserve land





Safeguard

Maryland's vital lands
and waters in perpetuity



Partnerships

inclusive, sustainable,
statewide conservation

Maryland Environmental Trust

What We Do

Engage and Inspire

Marylanders to stewardship
of the environment.



Assist

landowners and communities
to pursue meaningful
conservation goals



Engage in Strategic Land Conservation

- Coordinated the formation of a regional conservation partnership, the Heart of Maryland Conservation Alliance, to serve Frederick and Washington Counties
- About to complete an easement to protect an urban farm, the Koiner Farm, located in downtown Silver Spring
- Anticipate meeting goal of 1,000 acres protected by 18 easements in FY 2019



Strengthening and Enhancing Easement Stewardship

- Increased MET's capacity to monitor its easement estate through improved processes and technology, increased contractual staff, expanded volunteer pool, and better coordination with local land trust partners
- MET anticipates monitoring close to 700 easements in FY 2019, which is more than 60% of the easements it holds
- Connecting easement landowners to opportunities for implementing enhanced stewardship projects on their properties ie. forestation, stream restoration, and mitigation projects





Volunteer Easement Monitor
2018

Connecting and Strengthening Maryland's Conservation Community

- In addition to its annual Land Conservation Conference, MET since 2013 has been hosting a series of Roundtable seminars each focused on a particular matter of interest to our land trust and other conservation partners
- Roundtables offer a forum for networking and the exchange of ideas on the challenges and opportunities facing Maryland's conservation community
- These events also help MET achieve various program goals outlined in our Strategic Plan.



MET's Keep Maryland Beautiful Program

- Expanded grant program helps volunteer-based, nonprofit groups, communities and land trusts in Maryland support environmental education projects, litter removal, citizen stewardship and to protect natural resources in urban and rural areas



FY19 MET's KMB Grants

\$215,505 distributed, 71 grants

B.James Env't Grant M.R.Jones Grants
\$4,250, 5 awarded \$8,250, 7 awarded



Hollmann Grants
\$40,000, 10 awarded



Clean Up & Green Up MD Grants
\$158,005, 48 awarded



Hughes Grants
\$5,000, 1 awarded





Thank you!

**Maryland
Environmental
Trust**

John Turgeon, Acting Director
john.turgeon@maryland.gov
410-697-9525
www.dnr.maryland.gov/met