

# Transforming Conservation Through Technology

Jeffrey Allenby, GISP

Director of Conservation Technology

[jallenby@chesapeakeconservancy.org](mailto:jallenby@chesapeakeconservancy.org)



# Our Mission



Connect

Innovation

Conserve

Restore

# Measuring Progress



65 Acres Treated

11 Acres Treated

# Measuring Progress



65 Acres Treated

11 Acres Treated

# Enabling Partners



## Data

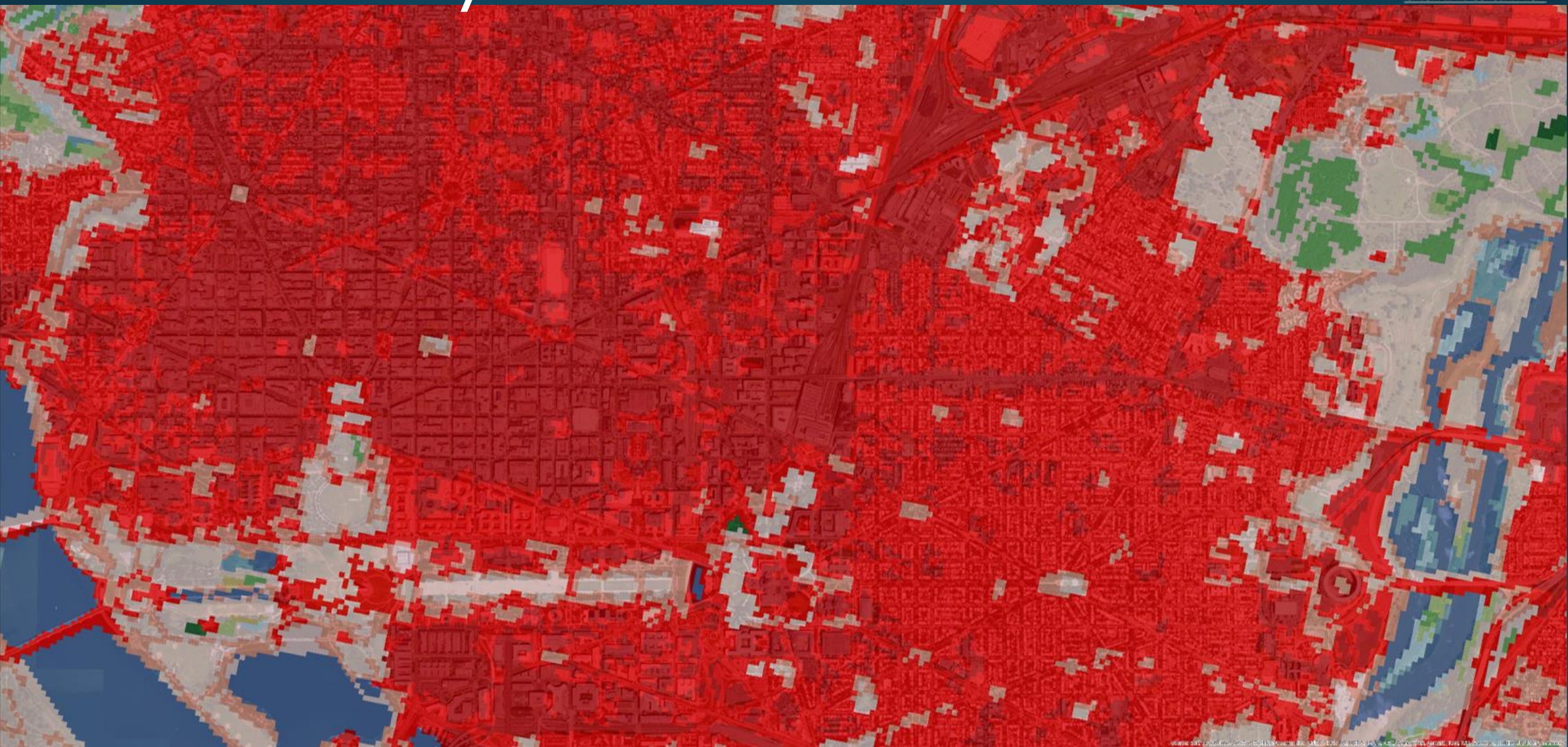
Land Cover/Use  
Flow Path Maps  
Prioritization



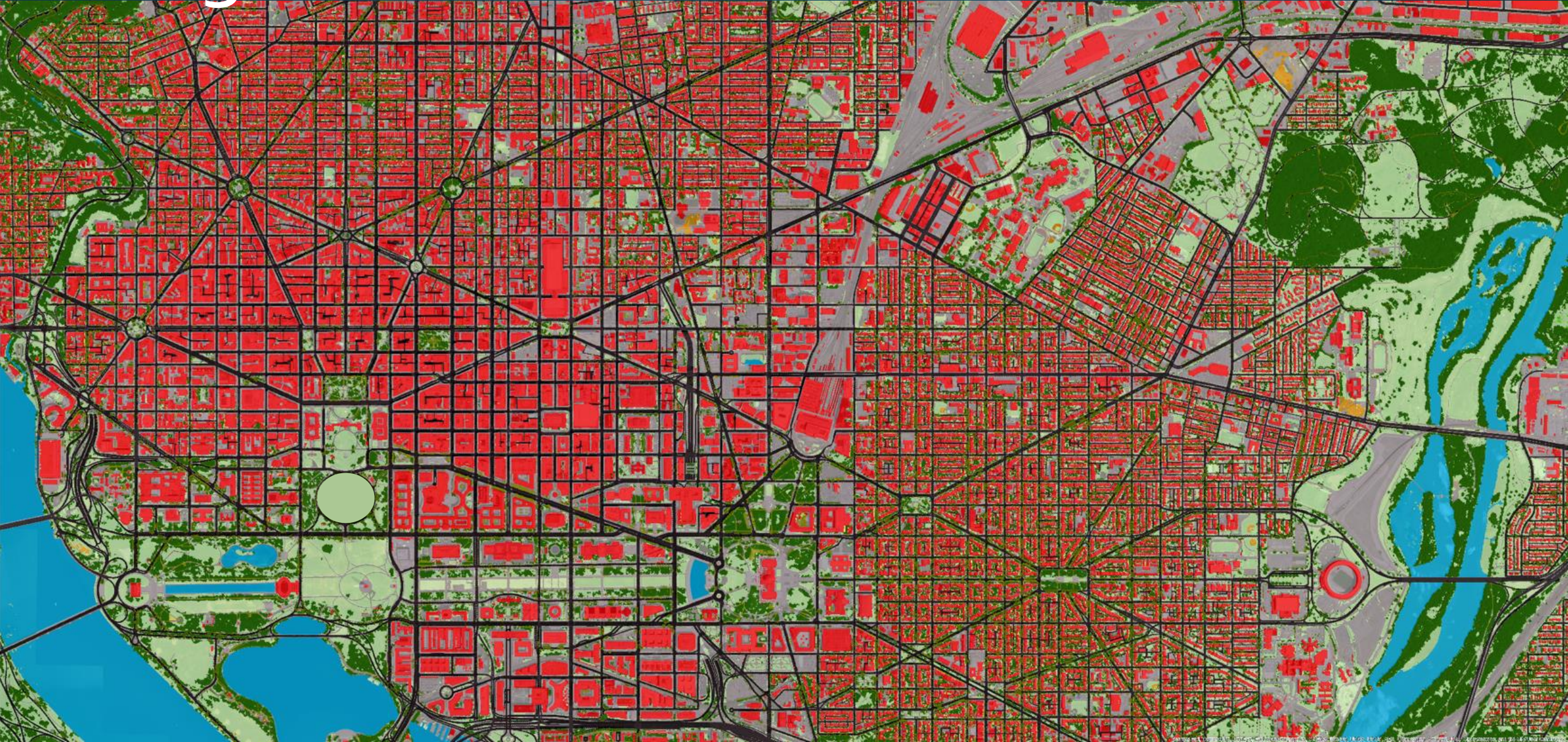
## Web-based tools

Access  
Products

# Previously Available Data



# High-resolution Data



# Lidar Flow Path Mapping





# Lidar Flow Path Mapping



### CBP Land Cover Classification

- Barren
- Impervious Roads
- Impervious Surfaces
- Low Vegetation
- Shrubland
- Structures
- Tree Canopy
- Tree Canopy over Impervious Roads
- Tree Canopy over Impervious Surfaces
- Tree Canopy over Structures
- Water
- Wetlands

Pixel size: 1 meter by 1 meter

High Resolution Land Cover & Concentrated Flow Paths



### CBP Land Cover Classification

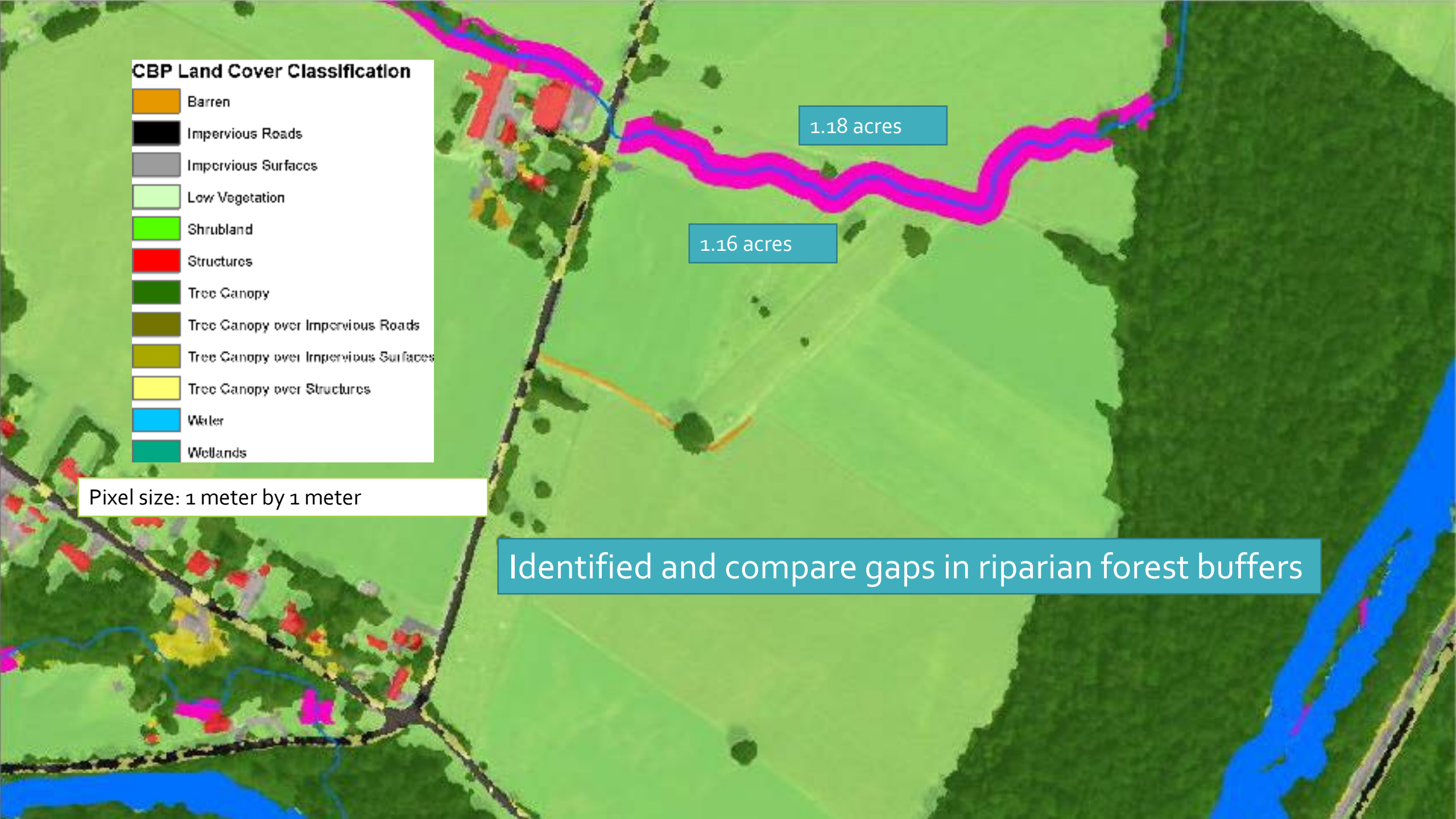
- Barren
- Impervious Roads
- Impervious Surfaces
- Low Vegetation
- Shrubland
- Structures
- Tree Canopy
- Tree Canopy over Impervious Roads
- Tree Canopy over Impervious Surfaces
- Tree Canopy over Structures
- Water
- Wetlands

Pixel size: 1 meter by 1 meter

1.18 acres

1.16 acres

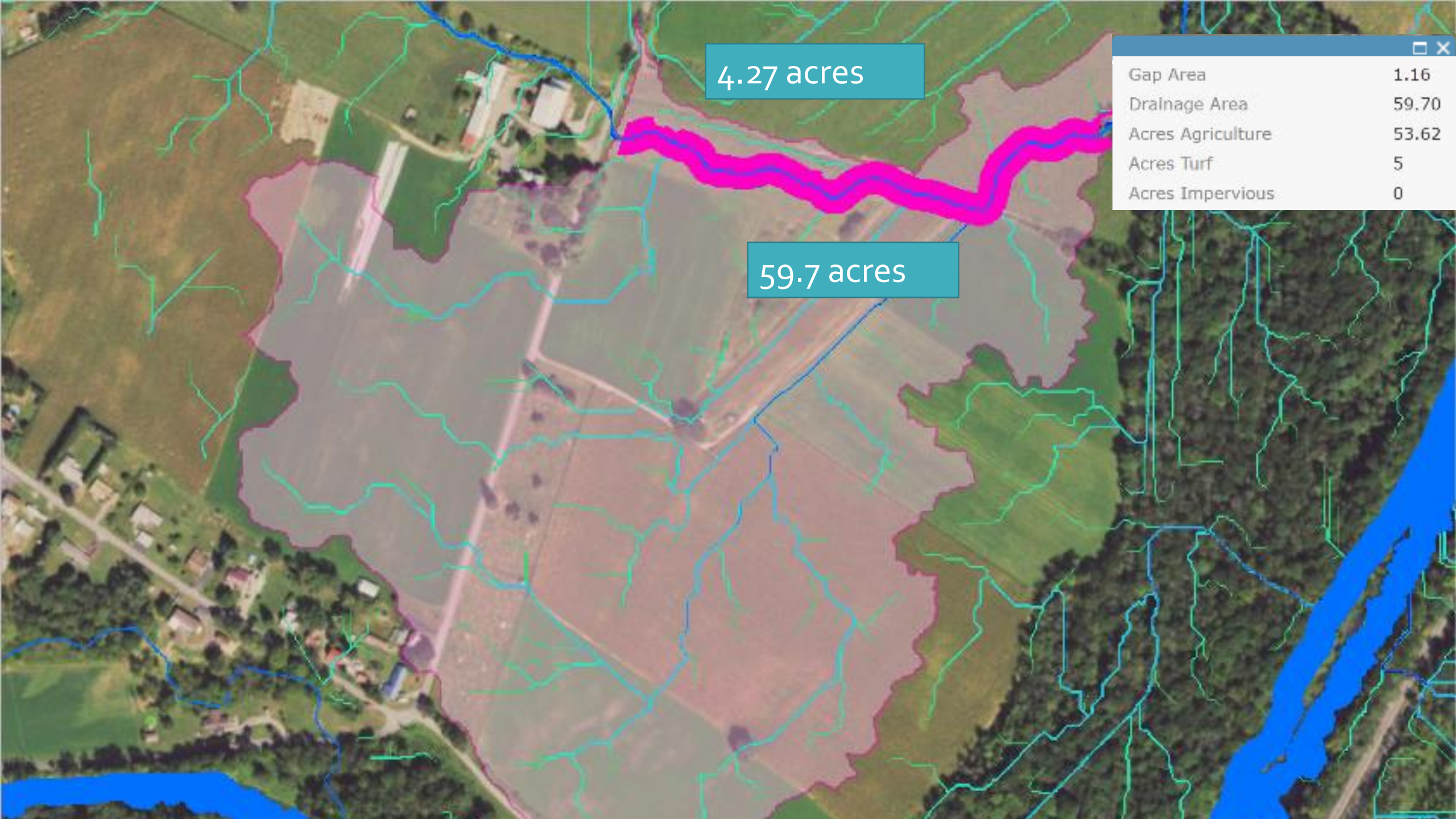
Identified and compare gaps in riparian forest buffers



4.27 acres

59.7 acres

Legend	
Gap Area	1.16
Drainage Area	59.70
Acres Agriculture	53.62
Acres Turf	5
Acres Impervious	0



# Landowner Outreach

## RESTORATION REPORTS

*Precision conservation for your property*

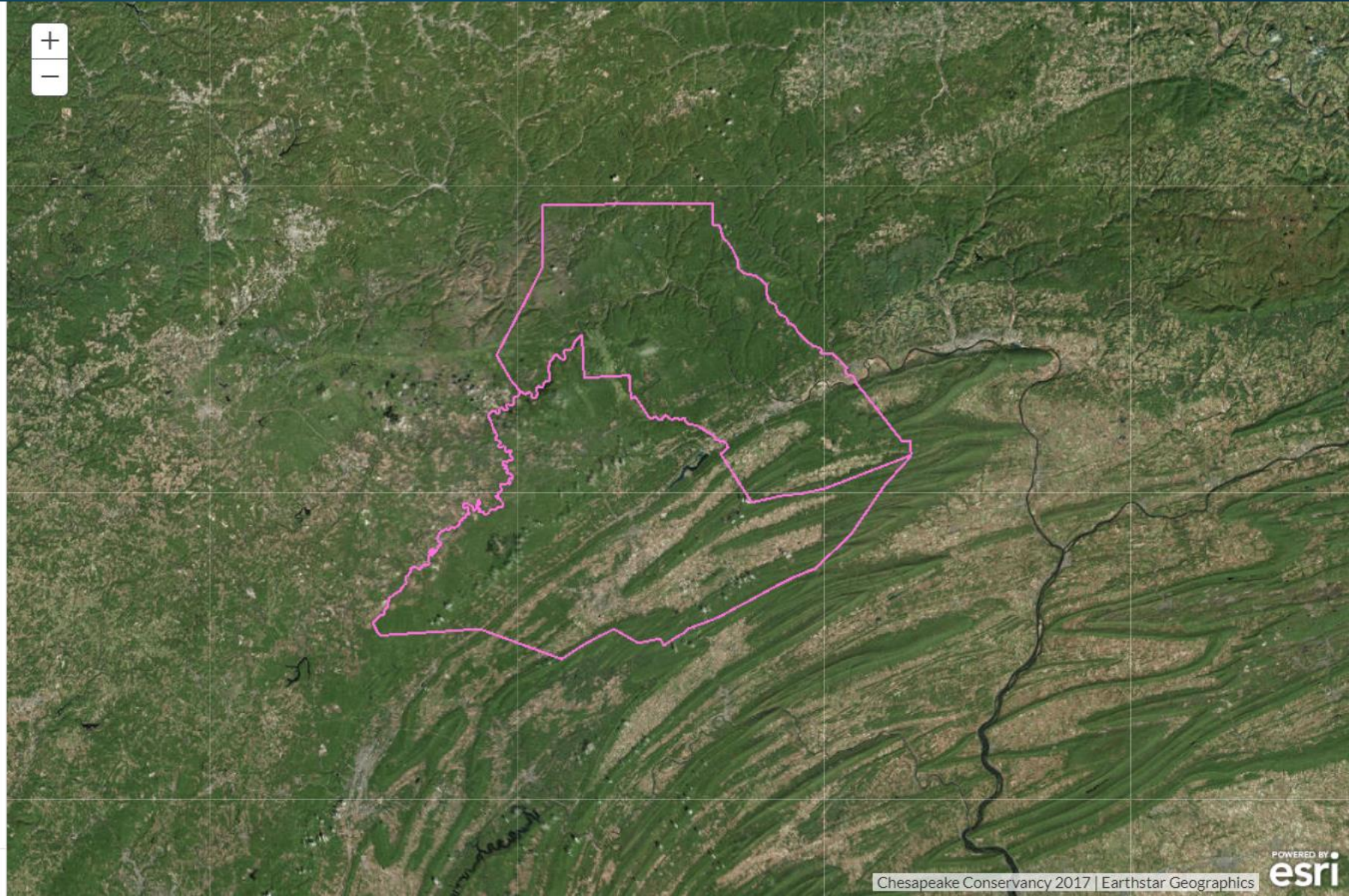
If you are a landowner in Clinton or Centre Counties, Pennsylvania, this free, confidential tool can help you get information about the restoration opportunities on your property that can improve the ecological conditions you care about.

Using state-of-the-art data analysis, Restoration Reports generates a customized report for your property, including the watershed you are a part of, the wildlife species that may live on your property, and whether you are in close proximity to an impaired stream.

You can then select your management priorities, for example, improving the hunting and fishing on your property, or supporting your agricultural land uses.

Get started

restorationreports.co




# Customized Reporting

4.24 acres


ACREAGE OF DRAINAGE THROUGH RESTORATION AREA  
72.27 acres

## 2. Select your management priorities




**Agricultural production** ✔

Restoration can help manage nutrients and improve soil and livestock health.



**Recreation** ✔

Hunting, fishing, and exploring your property safely.




**Wildlife** ✔

Young and mature forests and the species that inhabit them.

## 3. Would you like more information?

Yes, please  No, thanks


Generate new report  
Open report



## RESTORATION REPORTS

Precision conservation for your property

Restoration Reports details specific locations on your land where you can install best management practices.

 Parcel ID: No ID available  
In the Bald Eagle Creek watershed

### Restoration on your Property

This report identifies locations on your property where restoration could be most effective. The highest restoration priorities are areas next to streams without trees, shrubs, or wetlands. We suggest planting **riparian forest buffers** in these areas to filter water before it enters a stream. If there are no streams on your property, planting native trees and shrubs can provide many of the same benefits described in this Restoration Report because rainwater that falls onto your property ends up in nearby streams.

#### Example: Identifying restoration areas



1. **Land cover** includes: forests, shrubs, and wetlands; impervious surfaces (structures, driveways, and roads); low vegetation (lawns, farm fields); and barren (exposed dirt). **Low vegetation and barren are most readily restorable.**

Acres of land cover within your parcel					Most readily restorable		Total acres
Tree canopy	Canopy over impervious	Shrub or wetland	Water	Impervious	Low vegetation	Bare	
61.76	0.12	0	1.80	0.46	87.34	0.00	151.48
Restorable land within a 35 ft. distance of flow paths intersecting your parcel are called <b>Flow Path Restoration Areas</b>						<b>4.24</b>	




2. We focus on **flow paths**, or where rainwater accumulates and travels downslope before a stream is formed and continues as the stream itself.



3. Areas along flow paths that are restorable can filter water from upstream **drainage areas** before it enters a stream. These **flow path restoration areas** are the highest priority for **riparian forest buffer** restoration.



 The 4.24 acres of **flow path restoration area** intersecting your property have a total **drainage area of 72.27 acres from your property and your neighbors' property**, including 0 acres of bare earth, 1.14 acres of impervious surface, and 36.34 acres of low vegetation.



[conservationinnovationcenter.org](http://conservationinnovationcenter.org)

[jallenby@chesapeakeconservancy.org](mailto:jallenby@chesapeakeconservancy.org)



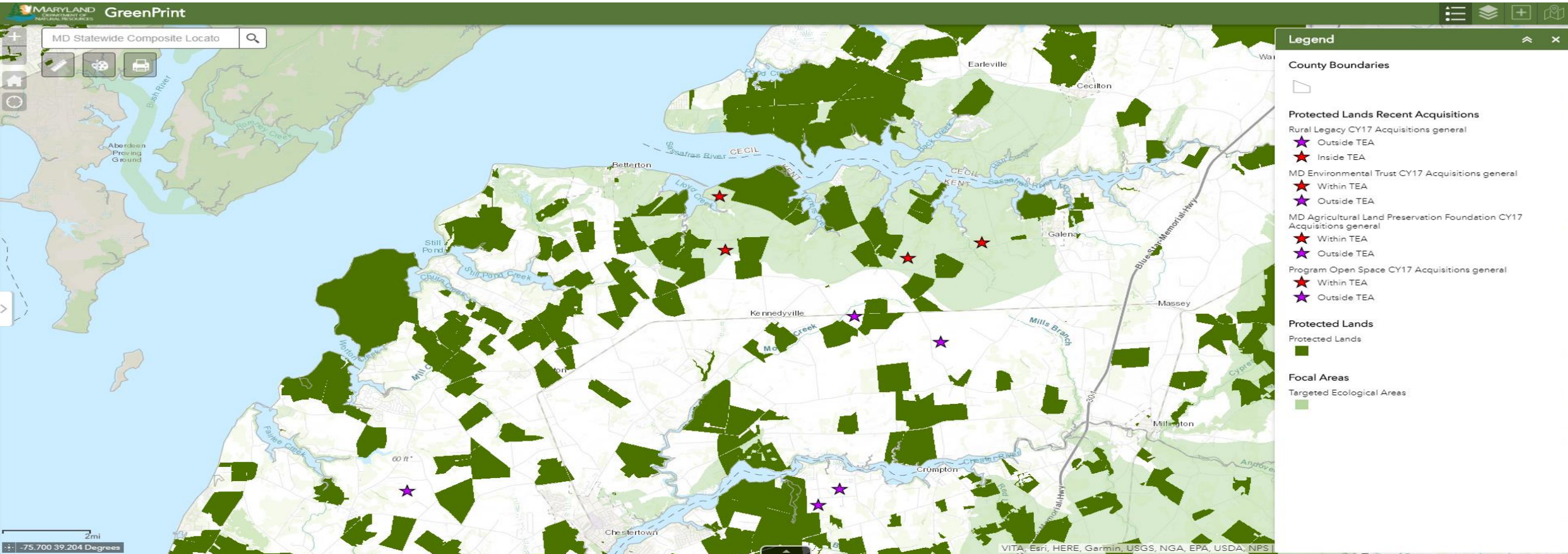
# **New DIY Parcel Report Cards Conservation Values Just a Click Away!**

**Christine Conn and Rachel Marks**

**2018 Maryland Land Conservation Conference**



# Stateside Program Open Space



# GreenPrint Scorecard



- Project scorecards and maps provided to the Board of Public Works
- Provides transparency and accountability
- Decisions based on ecologically defensible criteria and management objectives



Property: <b>Foster</b>	County: Worcester Map/Parcel: M45,P4	<b>Final Score</b> <b>133</b>
In Focus Area? <u>Yes</u>	In Priority Conservation Area? <u>Yes</u>	
<b>Step #1: Ecological Value Ranking (100 points possible)</b>		
A. Landscape Score		
I. Overall Landscape Score (10 points possible for each of the following categories - total 40 points)		
a. Green Infrastructure		9.8
b. Rare Species		10
c. Aquatic Life Hotspots		10
d. Water Quality Protection		8.4
Subtotal (Overall Landscape Value Score):		38.2
II. Priority Conservation Area Bonus (20 points if more than 50 acres is in a HPCA or 25% is in a HPCA):		
20		
B. Parcel Ecological Characteristic Score (10 points possible for each of the following categories - total 40 points)		
a. Green Infrastructure		9.4
b. Rare Species		9
c. Aquatic Life Hotspots		10
d. Water Quality Protection		9.5
Subtotal (Overall Parcel Value Score):		37.9
<b>Step #1 Total - Ecological Value Score: 96.1</b>		
<b>Step #2: Special Adjustment for Multiple Benefit Ranking (20 points possible)</b>		
A. Recreation Score (0, 5, or 10 points)		5
B. Historic or Cultural Value (0 or 5 points)		0
C. In-holding or Adjacency (0 or 5 points)		5
Step #2 Total - Multiple Benefit Score:		10
<b>Step #3: Habitat Maintenance or Restoration Values Ranking ((0.2 x Step 1) points possible)</b>		
A. Parcel supports unique natural resource values and acquisition will permit proactive management to prevent the habitat's degradation. - Multiply Step #1 total by 0.2, OR		
B. Is an exceptional restoration target, and such restoration would allow the parcel to be proactively managed for ecological purposes to restore it. - Multiply Step #1 total by 0.1		
Step #3 Total - Habitat Maintenance or Restoration Value Score:		0
<b>Subtotal of Steps #1, #2, and #3: 106.1</b>		
<b>Step #4: Management and Operations Ranking (Yes, No, or Undetermined)</b>		
A. Parcel desired by DNR, parcel management is possible - Proceed with acquisition		
B. No known or reliable committed process for managing the parcel. STOP - don't acquire.		
<b>Step #5: Consistency with Local Land Use Ranking</b>		
A. Land Use Context		26.5
B. Area-Wide Protection		26.5
<b>Total of Steps 1 to 5 - FINAL SCORE</b>		<b>132.6</b>

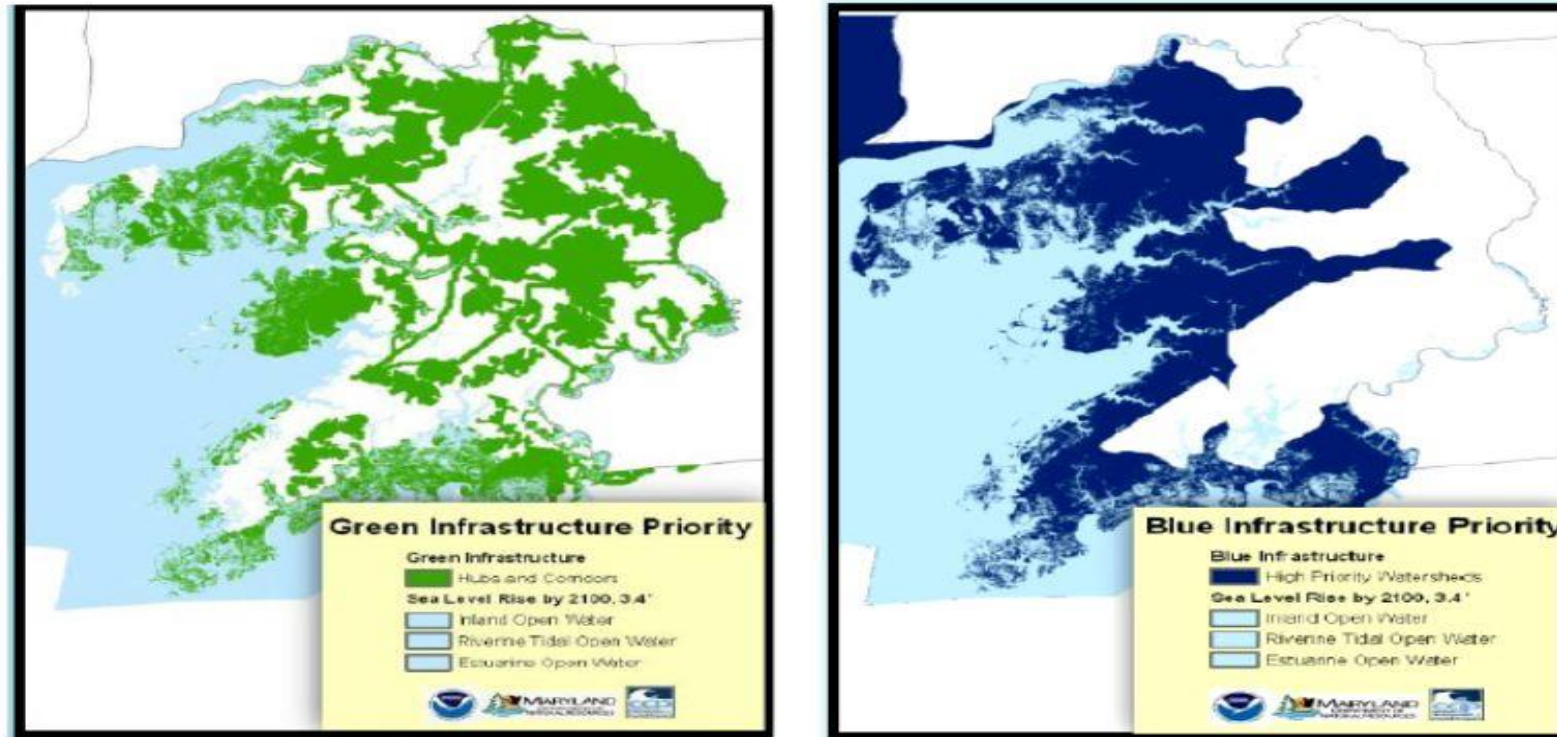
# Documentation of Conservation Values



# Targeted Ecological Areas



# Local Conservation Strategies



**Figure 1.** These maps are outputs of SLAMM that display high priority nearshore wetlands coincident with the green infrastructure network and high-priority watersheds identified in the blue infrastructure analysis, given sea level rise projected for 2100 in the Chesapeake Bay and a portion of Maryland's Eastern Shore.

# Resiliency

Nature based solutions that improve the capacity of communities to recover quickly from hazardous events

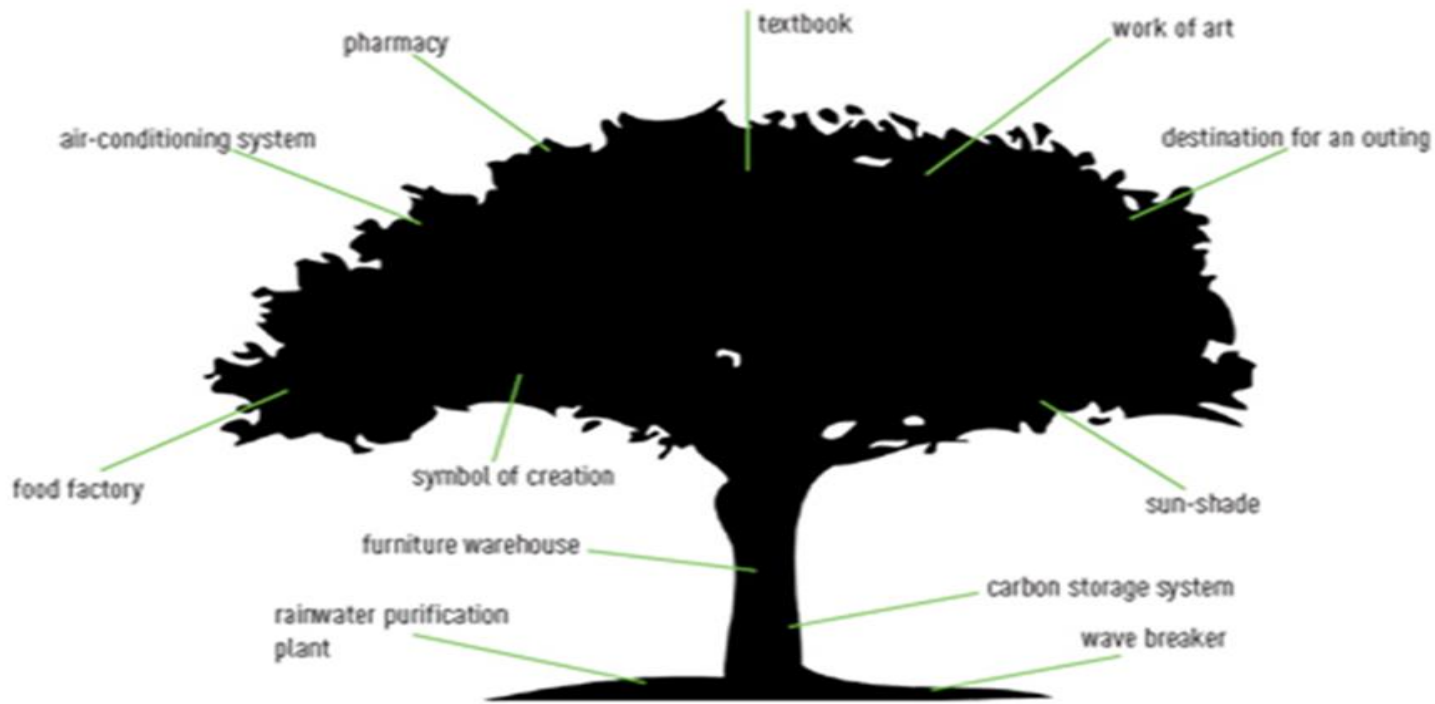


Coastal wetlands prevented \$625 million in property damages during Hurricane Sandy. They can reduce annual storm damages by more than 20%.

The Nature Conservancy. The value of coastal wetlands for reducing property damage factsheet.

# Nature's Services

## The tree – a service station for human beings



# Accounting for Maryland's Ecosystem Services (AMES)



Ecosystem services are any benefit that people receive from the environment

<b>Air Pollution Removal</b>	<b>Nutrient Uptake</b>
<b>Carbon Sequestration</b>	<b>Biodiversity/Wildlife Habitat</b>
<b>Groundwater Recharge</b>	<b>Stormwater Abatement</b>

When lost, they must be replaced or the public does without

- Public Health
- Quality of Life
- TMDLs





# Return on Conservation



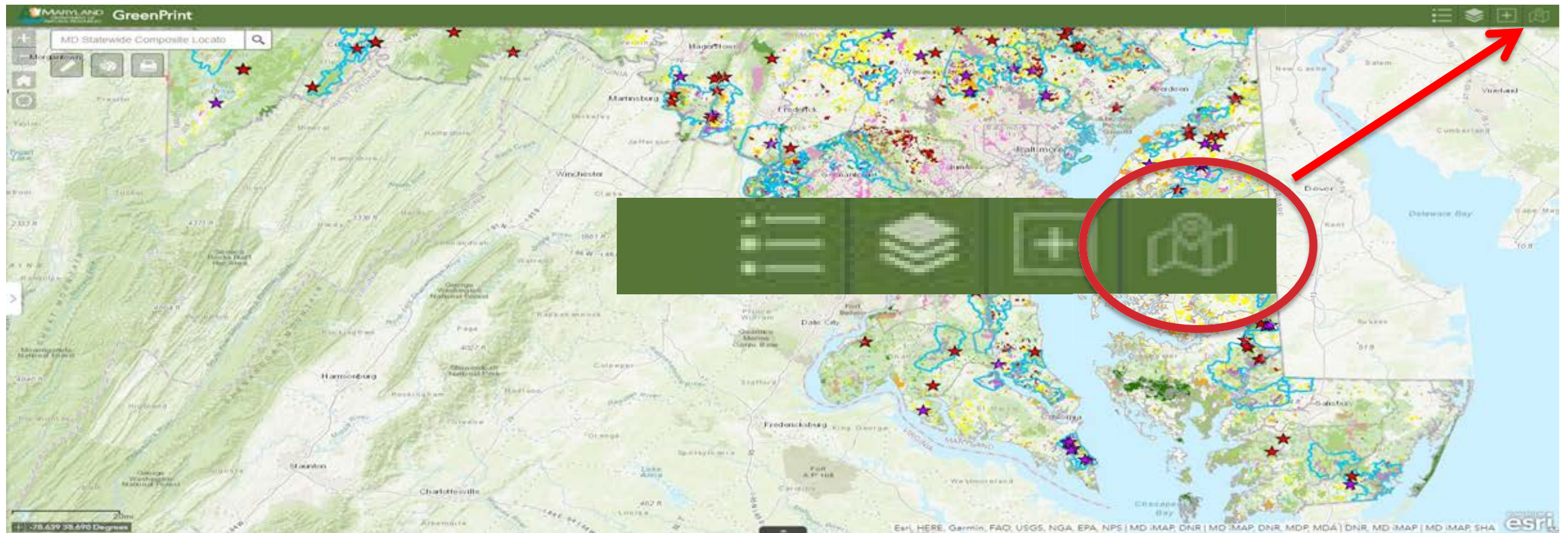
## Making the Case for Land Conservation

- 1:7 Ecosystem Service Return on Conservation
- Northhampton Co. (PA) Commissioners increased open space budget by \$2.2 million for FY2016



Keystone Conservation Trust evaluated ecosystem service benefits in 5 PA counties

# Parcel Evaluation Widget



The Parcel Evaluation Tool was prepared by the Maryland Environmental Service using Federal funds under award number NA15NOS4190165 from NOAA, U.S. Department of Commerce. The statements, findings, conclusions, and recommendations are those of the author(s) and do not necessarily reflect the views of NOAA or the U.S. Department of Commerce. The authors acknowledge the financial assistance provided by the Coastal Zone Management Act of 1972, as amended, administered by the Office for Coastal Management, National Oceanic and Atmospheric Administration.



**Learn More!**



**Targeting Conservation:  
Using the Right Tools at the Right Time  
Concurrent Session II  
2:45 – 4:45**

# RE-IMAGINING THE USE OF TECHNOLOGY IN STEWARDSHIP

Maryland Environmental Trust

# Updating Stewardship & Monitoring Protocol

- Over 1,000 easements to monitor on 134,088 acres!
- More than half co-held with our Local Land Trust Partners

## Maryland Environmental Trust's old monitoring process:

- Paper-based
- Microsoft Access database
- Manual photo-point entry



# The Database & Monitoring Toolset



BackOffice  
Thinking

## LOCATE

- Easement management database
- Reporting tools
- Strategic stewardship

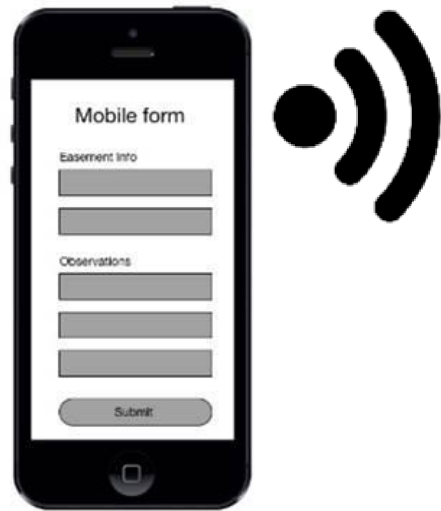


## Monitoring Toolset

- Monitoring reports
- Photo summary
- Due Diligence
- Flag items of concern

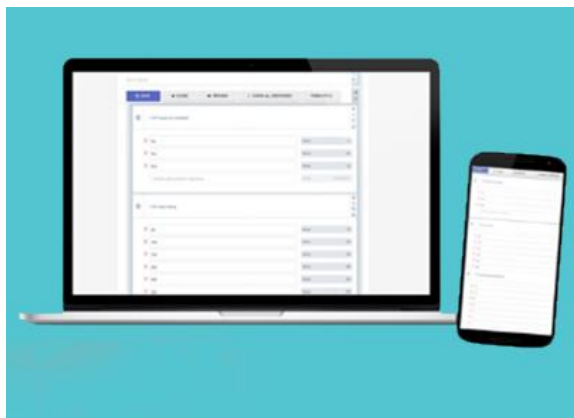
# The Monitoring Toolset

1. Mobile field report form

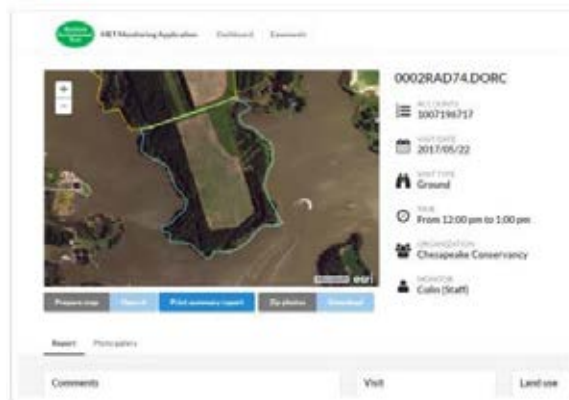
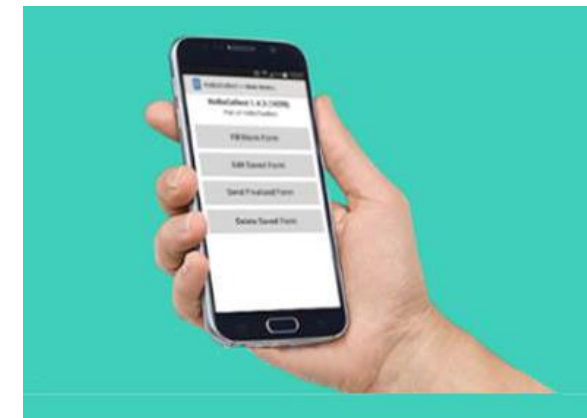


2. Web application for storage / display





TAKE GEOTAGGED PHOTOS



ADD CAPTIONS



SWIPE TO ADD PHOTOS

SUBMIT DRAFT REPORTS

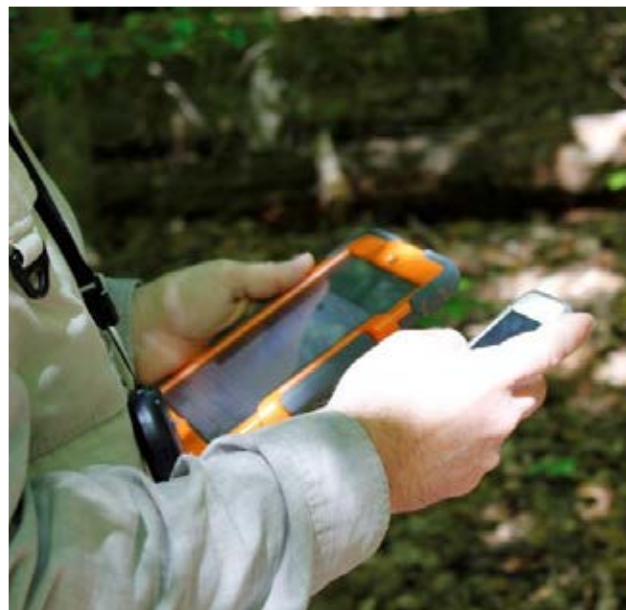


MARK AS FINALIZED



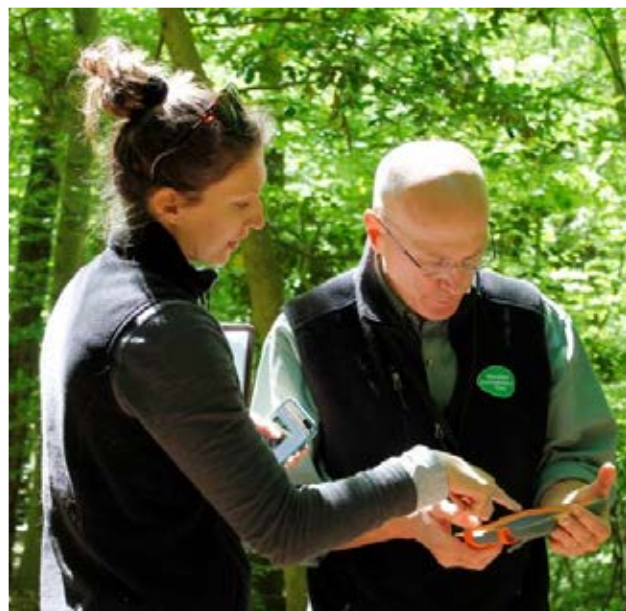


Field Tested



Chesapeake  
Conservancy  
EXPLORE. CONSERVE. INNOVATE.

Customized  
Freeware



Essential  
Functionality

## Monitoring Training Using the KOBO App



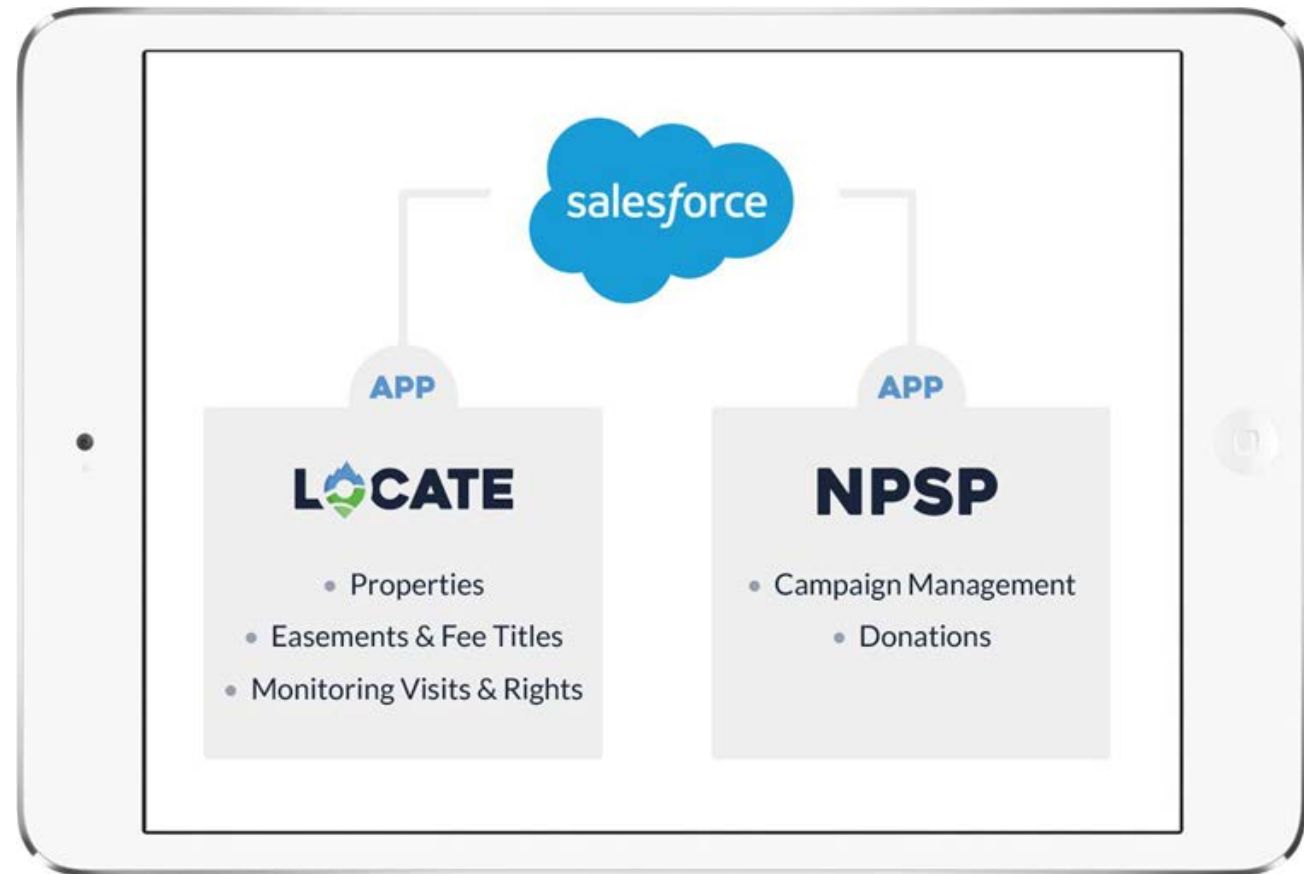
Monitoring easements with  
**Maryland Conservation Corps** and **Volunteers**



# The Right “Data”-base



We focus on your  
technology, so you can  
focus on your mission.



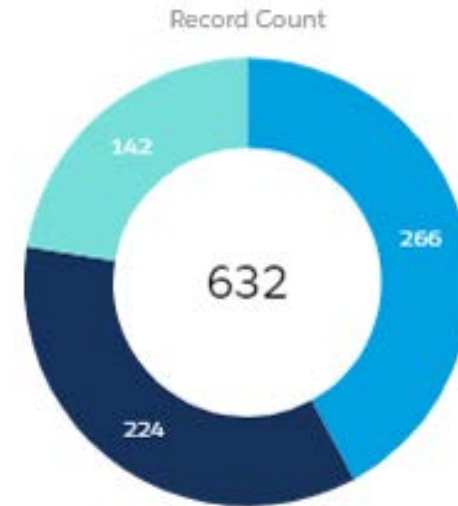


### CE/FT by Acquisition Type



ACQUISITION TYPE	RECORD COUNT
	70
Donated	1K
Bargain Sale	5
Purchased	188
Term	1

### Monitoring Reports by CY



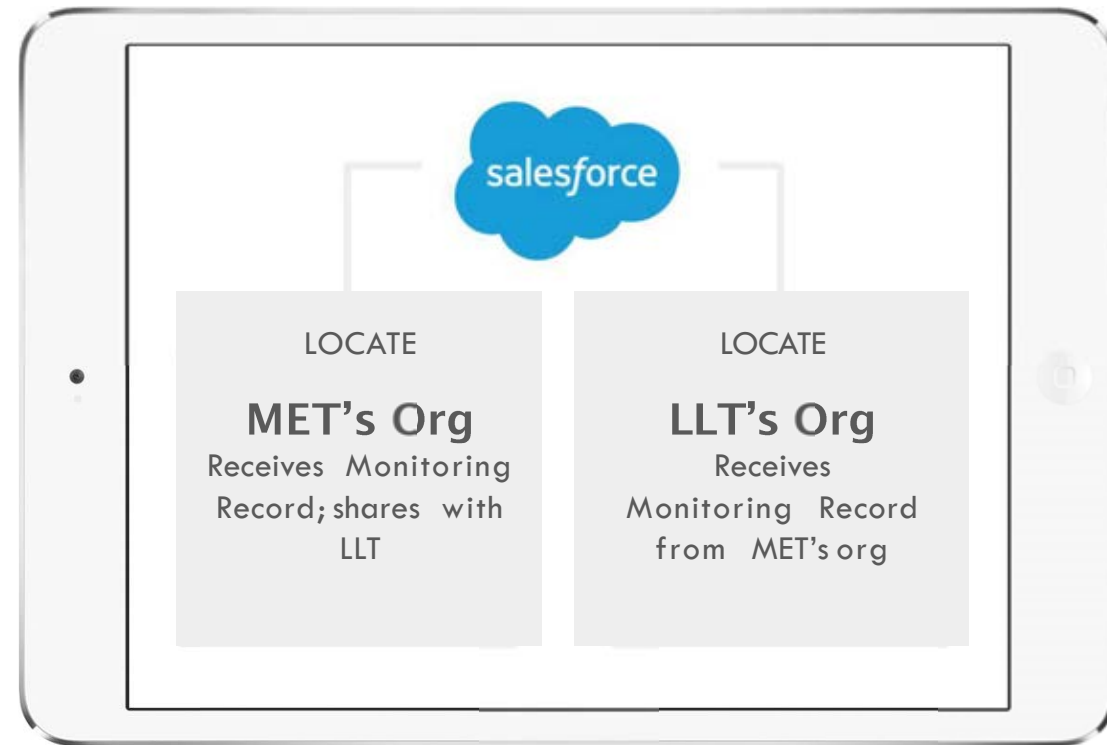
Visit (Monitoring) Date

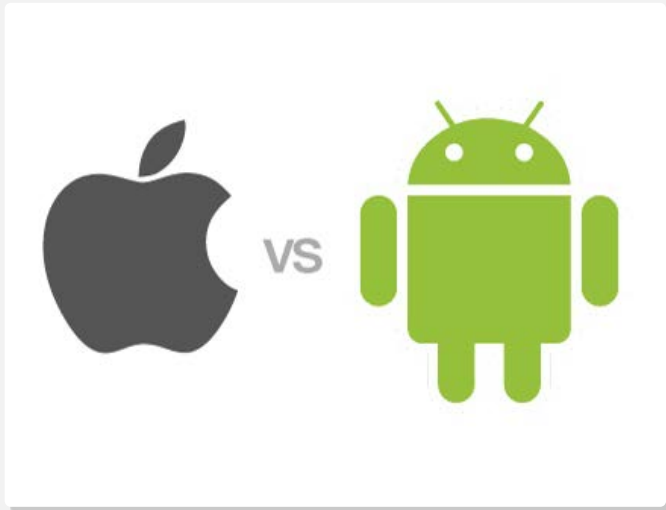
- FY 2016
- FY 2017
- FY 2018



## Chesapeake Innovations Center's Field Data Collection App from KOBO

- Land is Monitored using Kobo Monitoring App
- MET Approves Monitoring Record in web-based Admin Portal
- Monitoring Data pushed to LOCATE





# HICCUPS & BURPS



## Phase one completed.

We are excited to push forward with phase two and continue to open the door for more land trust partners.....

# Looking Ahead

In FY2019 and FY2020 Maryland Environmental Trust will continue to work with both Back Office Thinking and Chesapeake Conservancy to engage the next group of land trusts that will be adopting this toolset.





## Maryland Environmental Trust

Michelle Grafton | Land Trust Assistance Coordinator | [michelle.grafton@maryland.gov](mailto:michelle.grafton@maryland.gov)

Maryland  
Environmental  
Trust

**Michael S. Herzberger, GISP, CFM**  
*Section Chief, Geospatial and Engineering Services*  
259 Najoles Road | Millersville, MD 21108  
mherz@menv.com | menv.com  
410.729.8256 (office) | 443.370.9289 (cell)



**Innovation Through Collaboration**  
**Improving Government One Project At A Time....**

# About MES

- Independent Not-For-Profit State Agency
- Provide Wide Array of Environmental Services
- MES' Partners: States, Counties, Municipalities, Federal Government, Private Sector
- Work through: MOU's, IGA's, Grants, Executive Order & Other Contractual Instruments.

# Our Mission

*“...to protect and enhance the environment for the benefit of the people....”*

# Innovation Through Collaboration

- How is this being achieved?
  - Multi-Agency Coordination
  - Seeking Goals & Objectives that Yield Multiple Benefits
  - Drawing from Pooled Resources / Interdisciplinary Teams
  - Full Engagement with Stakeholders

# Tapping into the 'Silos of Excellence'



## 3 Examples

- Deep Mine Archive
- Resiliency Partnership
- Watershed Resources Registry

# Deep Mine Archive

- State Partners: MDE, MSA, MES
- Private collection of 120 deep mine maps from late 1700's early 1900's
- Federal Partners: MDE received grant through Office of Surface Mines (OSM), to acquire, restore, scan, and publish maps



# Acquisition, Scanning, Restoration, & Publication

- MES - purchased private collection
- MSA – restored and scanned all maps
- MDE – geo-located maps using GIS
- MES – developed GIS application for viewing and downloading
- MDE – published application on their servers

*Medium: mix of paper, linen, mylar and blueprints drawn in pencil or ink, both black and colored.*



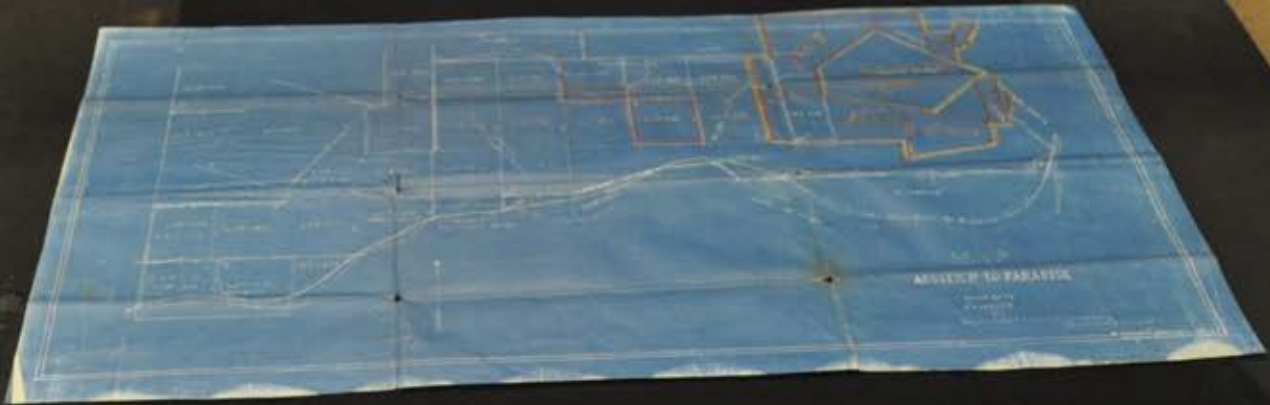
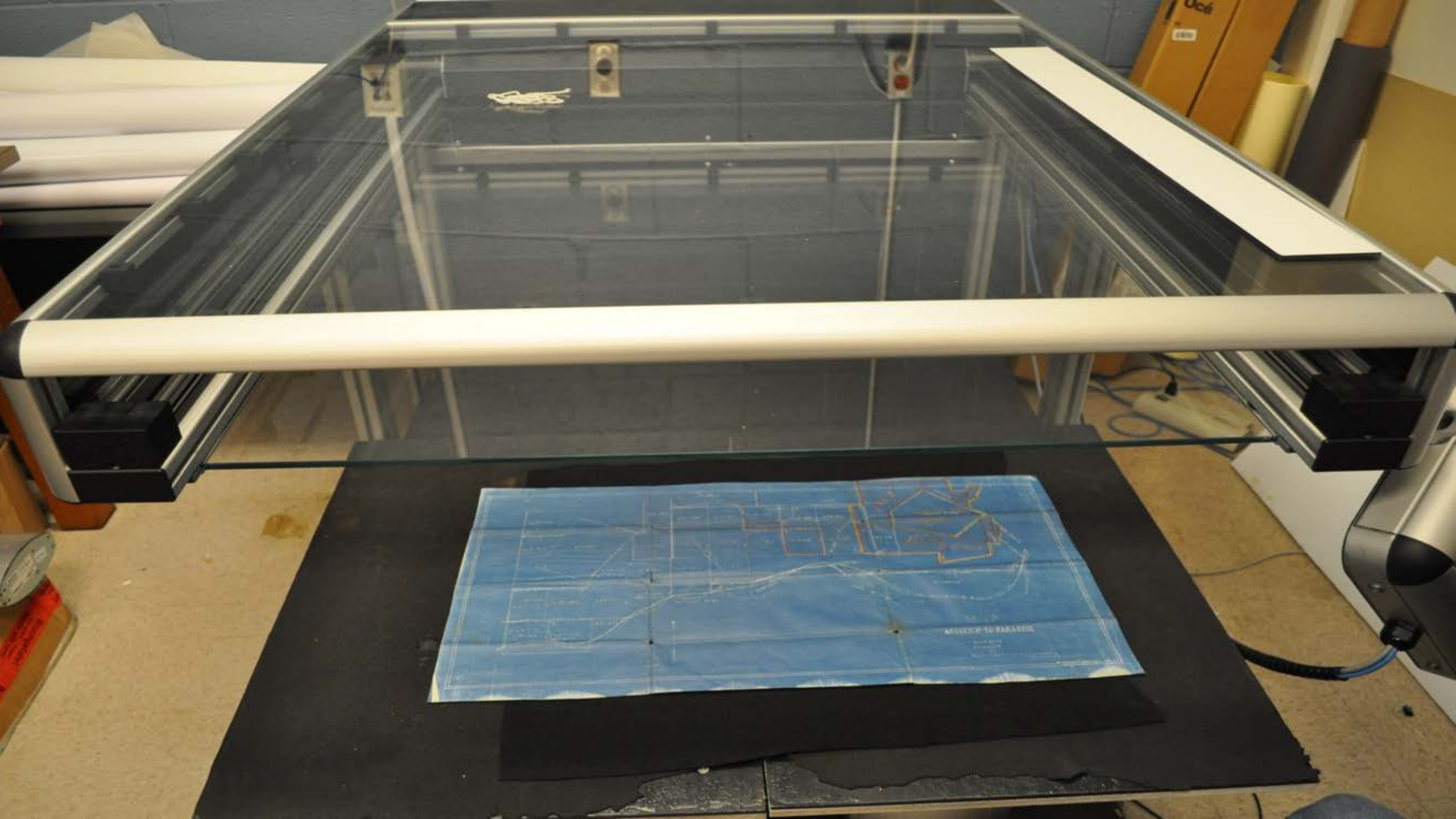


## Q.X. HDG.

This section in the past was squeezed. The rocks get on masses and in their place is found a heavy draw plate which is extremely difficult to hold. These conditions add greatly to the cost of clearing as it is estimated, that in that part tinted black, three times the amount of timber required for normal recovery will be used. The rooms in the black section are very wide, making the clearing great.

MANING:- twice the normal:-  
MANAGE:- Normal:-  
The above conditions render it impossible to mine the coal shown in black at a cost of less than \$0.76 per T. in excess of normal cost.





# MARYLAND ENVIRONMENTAL SERVICE

The screenshot displays the 'Mining Archive' web application. At the top left, there is a search bar labeled 'Search address or point of interest:'. The main area is a topographic map of West Virginia and Maryland, showing various mountain ranges like the Allegheny, Spruce Knob, and Elk Mountains. Numerous orange dots are scattered across the map, representing mine locations. A central pop-up window contains the following text: 'The Mapping Services provided herein are for reference only. The user of this information understands and acknowledges that the data may be inaccurate or contain errors or omissions and the user assumes full responsibility for any risks or damages resulting from any use of or reliance upon this data. MDE and their Agents or Affiliates do not guarantee the accuracy or reliability of the data generated from this service.' Below the text is a checkbox labeled 'I agree to the above terms and conditions' and an 'OK' button. On the right side, there is a 'Mine Details' panel with a search bar for 'Mine Name/Alias' and dropdown menus for 'Basin', 'Seam', 'Company', and 'County'. 'Search' and 'Reset' buttons are located at the bottom of this panel. At the bottom of the map, there is a scale bar and a copyright notice: 'Jarion Hawkins, MDE, Land Management Administration - Abandoned Mine Lands Division | VITA, West Virginia GIS, S'.

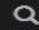
<http://mde.maryland.gov/programs/LAND/mining/Pages/mapping.aspx>

# Resiliency Partnership

- Partners: MDE, MEMA, DNR, MHT, MTA, DHCD, DoIT, SHA, MIA, MAFSM, MES
- Capitalize on resource sharing
- Support comprehensive projects
- Integrate Hazard Mitigation, Floodplain Management, and Coastal & Climate Resiliency
- Federal partners: FEMA, NOAA, FTA, & FHWA

## Maryland Resiliency Partnership

*Working together to create a more resilient Maryland*

Home Funding Events How We Can Help 

Resiliency is...

...*"the ability to prepare for and adapt to changing conditions and withstand and recover rapidly from disruptions."*

### Who We Are

The Resiliency Partnership is a collaboration of public and private partners to leverage funding, personnel, and projects to support efforts that integrate hazard mitigation, floodplain management, and coastal and climate resiliency.



<http://resiliencypartnership.org>





## RESIDENTIAL CONTRACT OF SALE

*This is a Legally Binding Contract; If Not Understood, Seek Competent Legal Advice.*

**THIS FORM IS DESIGNED AND INTENDED FOR THE SALE AND PURCHASE OF IMPROVED SINGLE FAMILY RESIDENTIAL REAL ESTATE LOCATED IN MARYLAND ONLY. FOR OTHER TYPES OF PROPERTY INCLUDE APPROPRIATE ADDENDA.**

### **41. FLOOD DISCLOSURE NOTICE:**

**A. FLOOD INSURANCE PREMIUMS:** The Property or part of the Property may be located in an area established by the government as a "flood plain" or otherwise in an area where flood insurance could be required by Buyer's mortgage lender as a condition of granting a mortgage. In addition, construction on the Property could be prohibited or restricted.

The National Flood Insurance Program ("NFIP") provides for the availability of flood insurance but also establishes flood insurance policy premiums based on the risk of flooding in the area where properties are located. Due to amendments to federal law governing the NFIP those premiums are increasing, and in some cases will rise by a substantial amount over the premiums previously charged for flood insurance. As a result, Buyer should not rely on the premiums paid for flood insurance on the Property as an indication of the premiums that will apply after Buyer completes the purchase. In considering the purchase of this Property, Buyer should consult with one or more carriers of flood insurance for better understanding of flood insurance coverage, the premiums that are likely to be required to purchase such insurance and any available information about how those premiums may increase in the future. Detailed information regarding flood insurance coverage may be obtained at: <http://www.fema.gov/flood-insurance-reform-act-2012>.

**B. FLOOD INSURANCE RATE MAPS:** The State of Maryland in conjunction with the Federal Emergency Management Agency has been systematically updating flood insurance rate maps. The Property may be affected. Buyer is advised to contact the Maryland Department of the Environment and consult a flood insurance carrier to inquire about the status of the Property. Detailed information regarding updated maps may be obtained at: <http://www.mdfloodmaps.net/home.html>.

# Watershed Resources Registry (WRR)

- **Partners:** Delaware Department of Transportation, Delaware Natural Resources and Environmental Control, Federal Highway Administration, Maryland Department of Natural Resources, Maryland Department of Planning, Maryland Department of the Environment, Maryland Department of Transportation, Maryland Department of Transportation, State Highway Administration, Maryland Environmental Service, Maryland Department of Information Technology, Pennsylvania Department of Conservation and Natural Resources, Pennsylvania Department of Environmental Protection, Pennsylvania Department of Transportation, US Army Corps of Engineers Baltimore District, US Army Corps of Engineers Huntington District, US Army Corps of Engineers Norfolk District, US Army Corps of Engineers Philadelphia District, US Army Corps of Engineers Pittsburg District, US Environmental Protection Agency Region 3, US Fish and Wildlife Service, Virginia Department of Conservation and Recreation, Virginia Department of Environmental Quality, Virginia Department of Game and Inland Fisheries, Virginia Institute of Marine Science, Virginia Marine Resource Commission, West Virginia Department of Environmental Protection, West Virginia Department of Highways, West Virginia Department of Transportation, West Virginia Division of Forestry, West Virginia Division of Natural Resources

# WRR Explained

- A web-based user friendly mapping application, encompassing multi-agency collaboration, designed to achieve regulatory streamlining by scoring sites to promote sustainable watershed restoration and preservation

# WRR Explained

A comprehensive mapping tool and replicable framework that:

- Transparent, predictable and reliable
- Facilitates multi-agency input and coordination
- Utilizes both national and regional datasets
- Includes site visit **registered** information

# WRR Use Cases

- *The Watershed Approach for Water Quality Improvements*
- *Clean Water Act Sections: 303(d), 319, 401, 402, 404*
  - *Watershed planning, permit review, mitigation assessments*
  - *Total Maximum Daily Load (TMDL) and Watershed Implementation Plan (WIP) applications*
- *National Environmental Policy Act (NEPA) Review*
- *Land Conservation Priorities to Protect Ecologically Valuable areas including Rare, Threatened and Endangered Species*
- *21<sup>st</sup> Century Act (MAP-21) and Safe, Accountable, Flexible, Efficient Transportation Act: A Legacy for Users (SAFETEA-LU)*
- *State Transportation and Land Use planning decision making*
- *Resource Conservation/Environmental Resource planning*
- *Other State and Local regulations*



Maryland  
Department of  
the Environment



US Army Corps  
of Engineers



# Want to learn more?

- Targeting Conservation Session: Using the Right Tools at the Right Place at the Right Time 2:45pm - 4:15pm
- Or visit: <https://watershedresourcesregistry.org>

# Thank You!

**Michael S. Herzberger, GISP, CFM**

*Section Chief, Geospatial and Engineering Services*

259 Najoles Road | Millersville, MD 21108

[mherz@menv.com](mailto:mherz@menv.com) | [menv.com](http://menv.com)

[410.729.8256](tel:410.729.8256) (office) | [443.370.9289](tel:443.370.9289) (cell)





**baltimore**  
**greenspace**

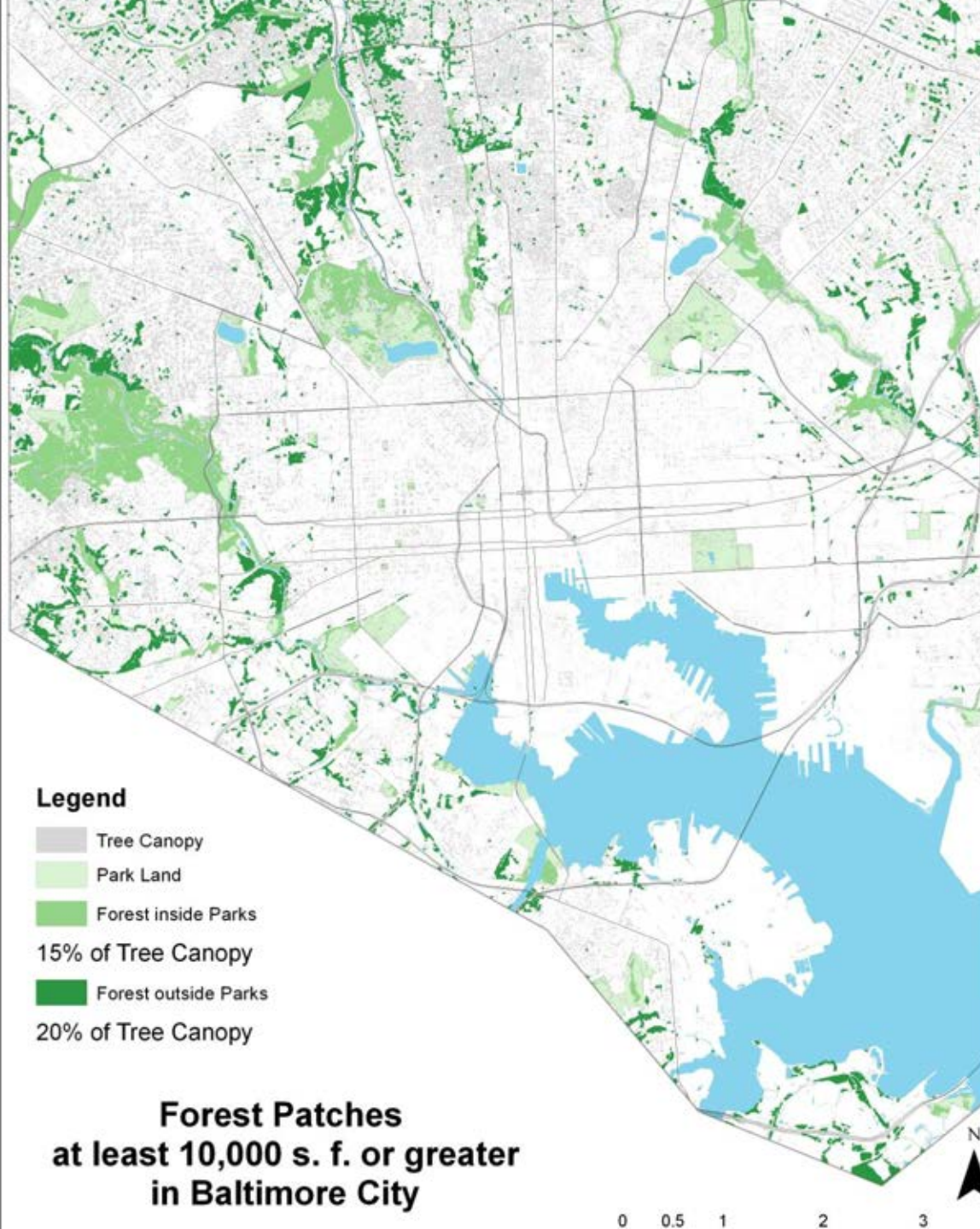
**Driving Engagement & Advocacy With  
Science**

**Katie Lautar**  
**Program Director**



>1,000 forest patches

20% of  
Baltimore's Tree  
Canopy is in  
Forest Patches  
Outside of Parks



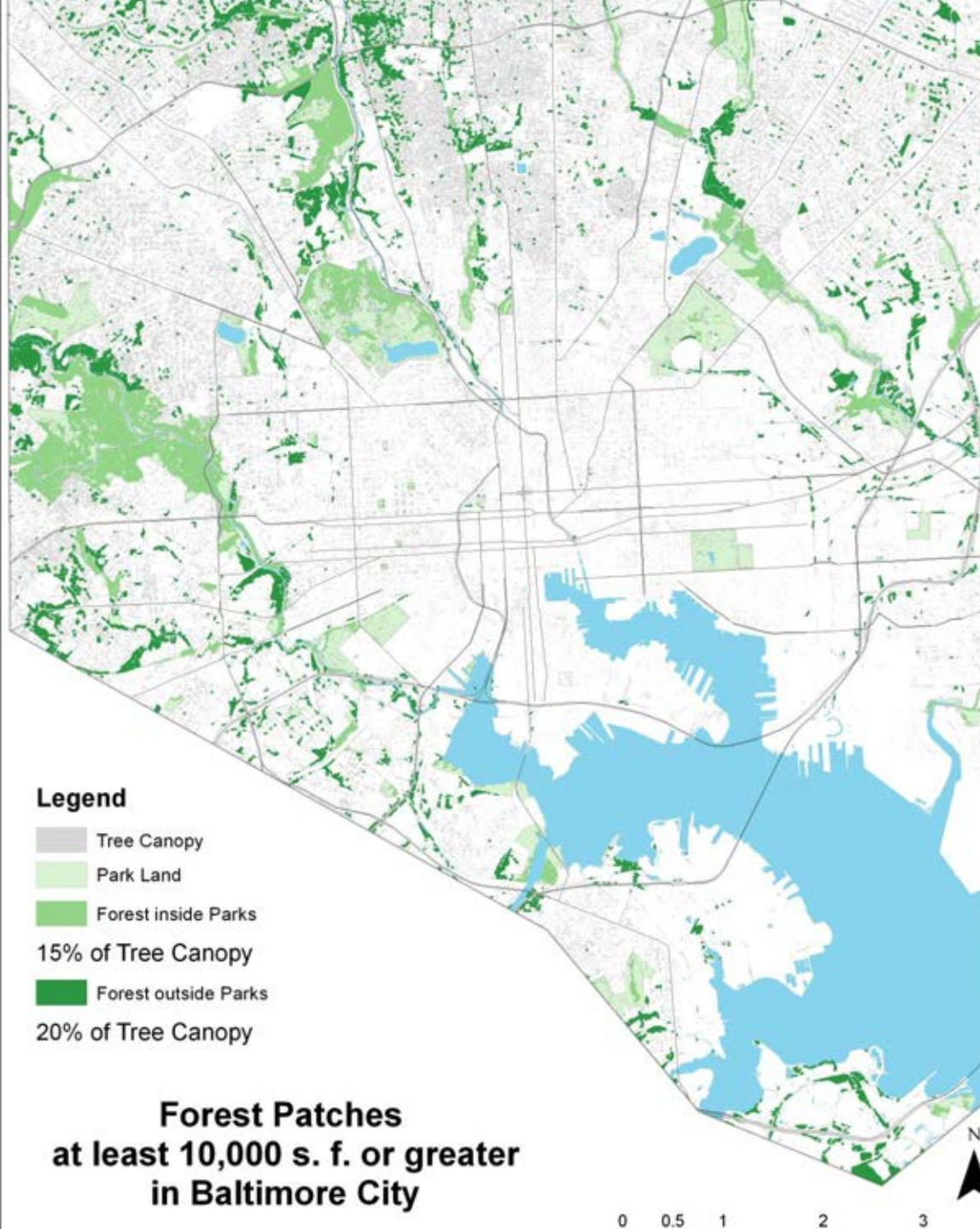


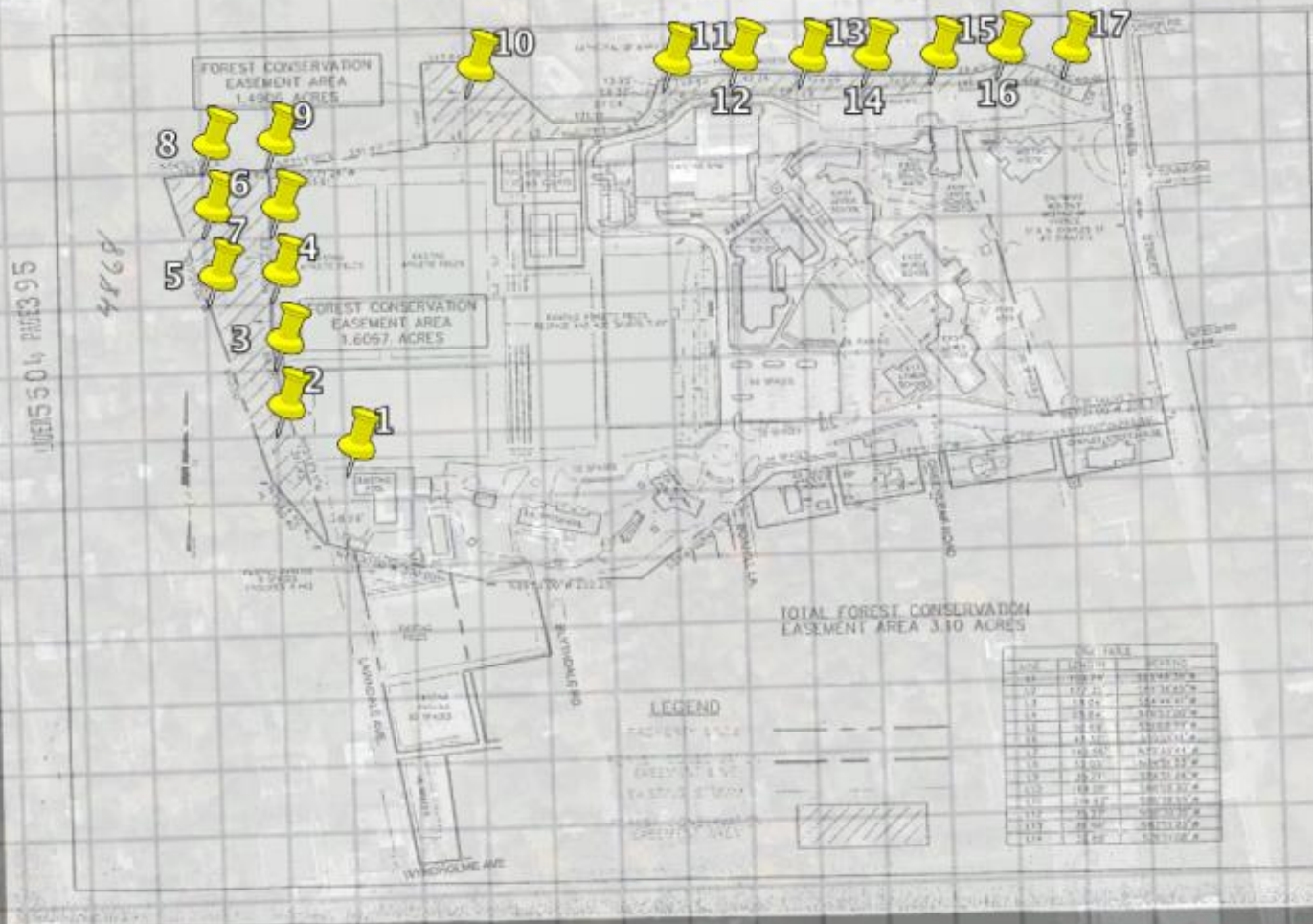
**>1,000 forest patches**

**100 on- the-  
ground surveys**

**88 quick surveys**

**22 in depth forest  
health protocol**





UNITS 504 PAGES 95  
4868

TOTAL FOREST CONSERVATION EASEMENT AREA 3.10 ACRES

LEGEND

- PROPERTY LINE
- CREWLINE & VE
- EXISTING DRIVEWAY
- CREWLINE ONLY

NO.	AC.	sq. FT.	sq. FT.
1	1.4967	101,340.00	101,340.00
2	1.6057	110,340.00	110,340.00
3	1.4967	101,340.00	101,340.00
4	1.6057	110,340.00	110,340.00
5	1.4967	101,340.00	101,340.00
6	1.6057	110,340.00	110,340.00
7	1.4967	101,340.00	101,340.00
8	1.6057	110,340.00	110,340.00
9	1.4967	101,340.00	101,340.00
10	1.6057	110,340.00	110,340.00
11	1.4967	101,340.00	101,340.00
12	1.6057	110,340.00	110,340.00
13	1.4967	101,340.00	101,340.00
14	1.6057	110,340.00	110,340.00
15	1.4967	101,340.00	101,340.00
16	1.6057	110,340.00	110,340.00
17	1.4967	101,340.00	101,340.00

FIGURE A TO EASEMENT AND RESTRICTIONS COVENANTS FOR FOREST CONSERVATION  
SCALE 1" = 200'  
CENTER FOR PLANNING, INC.  
CIVIL ENGINEERING - SITE PLANNING

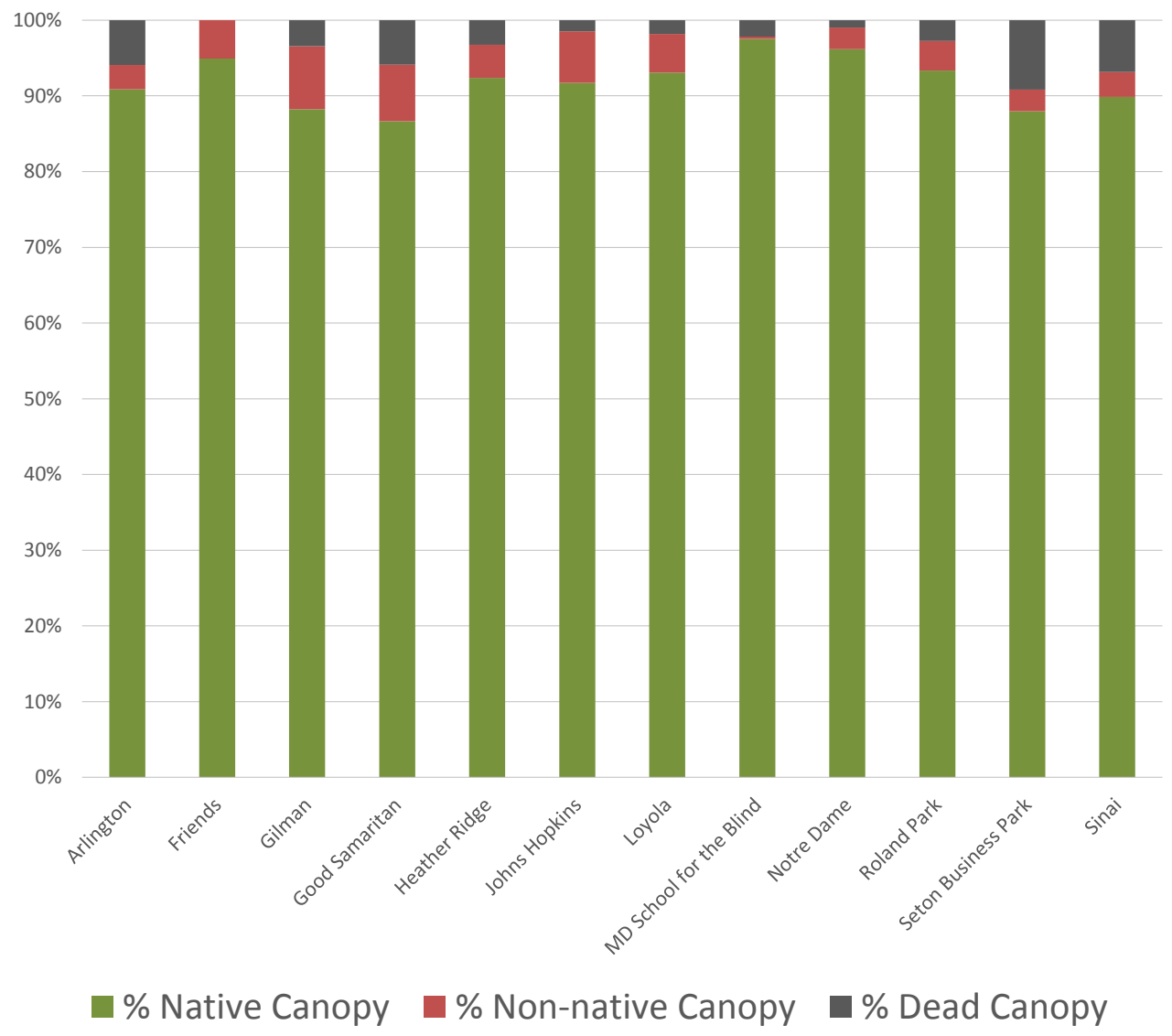
WARD 27 SECTION 14  
BLOCK 4867 LOTS 1/2  
OWNER: FRIENDS SOWPOD OF BALTIMORE, INC  
5114 NORTH CHARLES STREET  
BALTIMORE, MARYLAND 21216  
SITE AREA: 27,208 ACRES  
ZONING: R-1

BALTIMORE CITY CIRCUIT COURT (LAND RECORDS) PNC 5004 & 0095 MSA CE184 18009 Date Purchase 01/27/2005 Printed 08/24/2015

Google earth

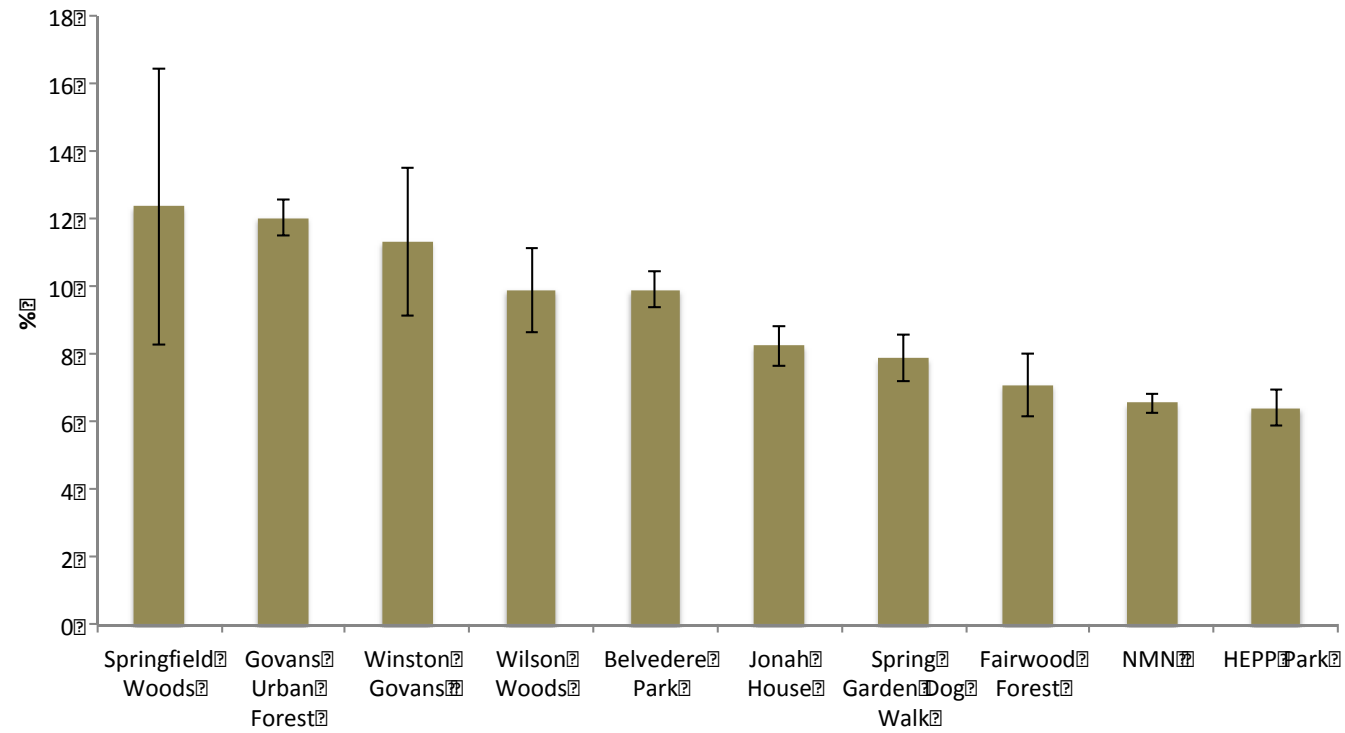
# 2015 Easement Study

## Natives, Non-natives, and Dead Trees

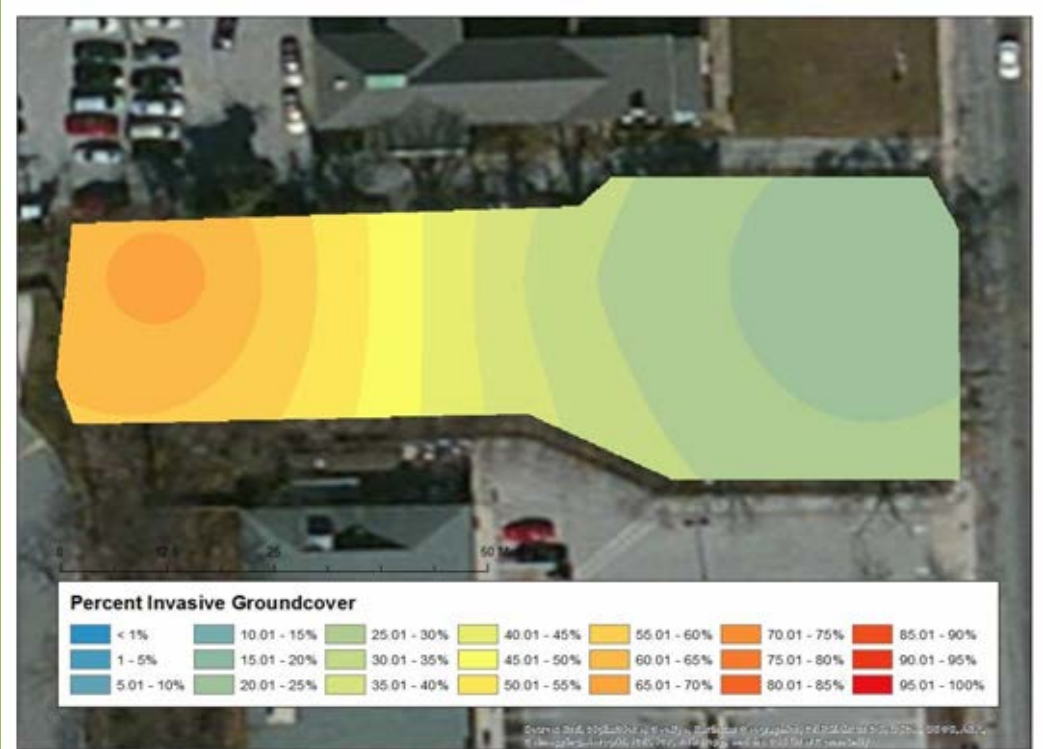




## 2016 Stewarded Patches Soil Organic Matter









**We Lead**

**We Support  
Leadership**









*Fantastic*  
**FOREST  
FORUM**  
**THU. NOV. 9, 2017**

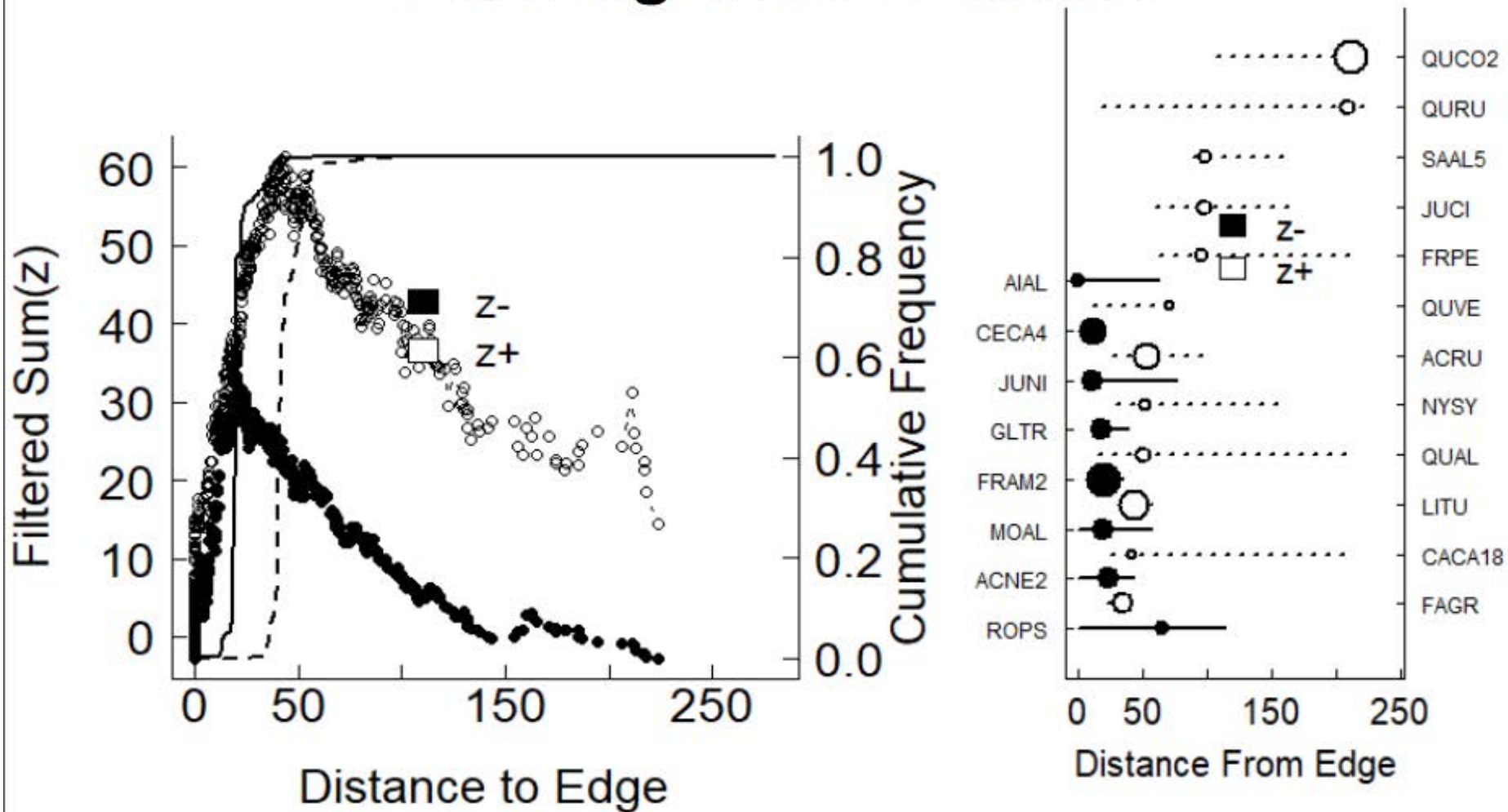


**98 species have been found in the forest patches...**



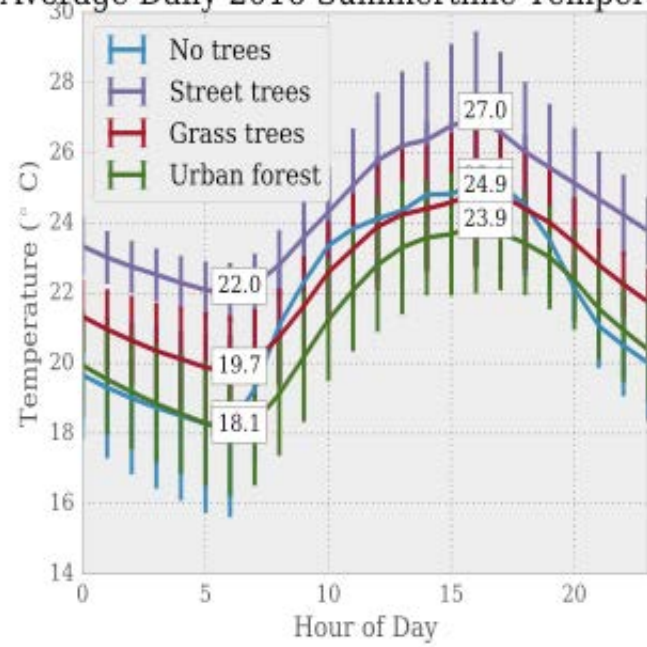
**...including forest specialists**

# Different Species Associated with Edges and Interiors





## Average Daily 2016 Summertime Temperature



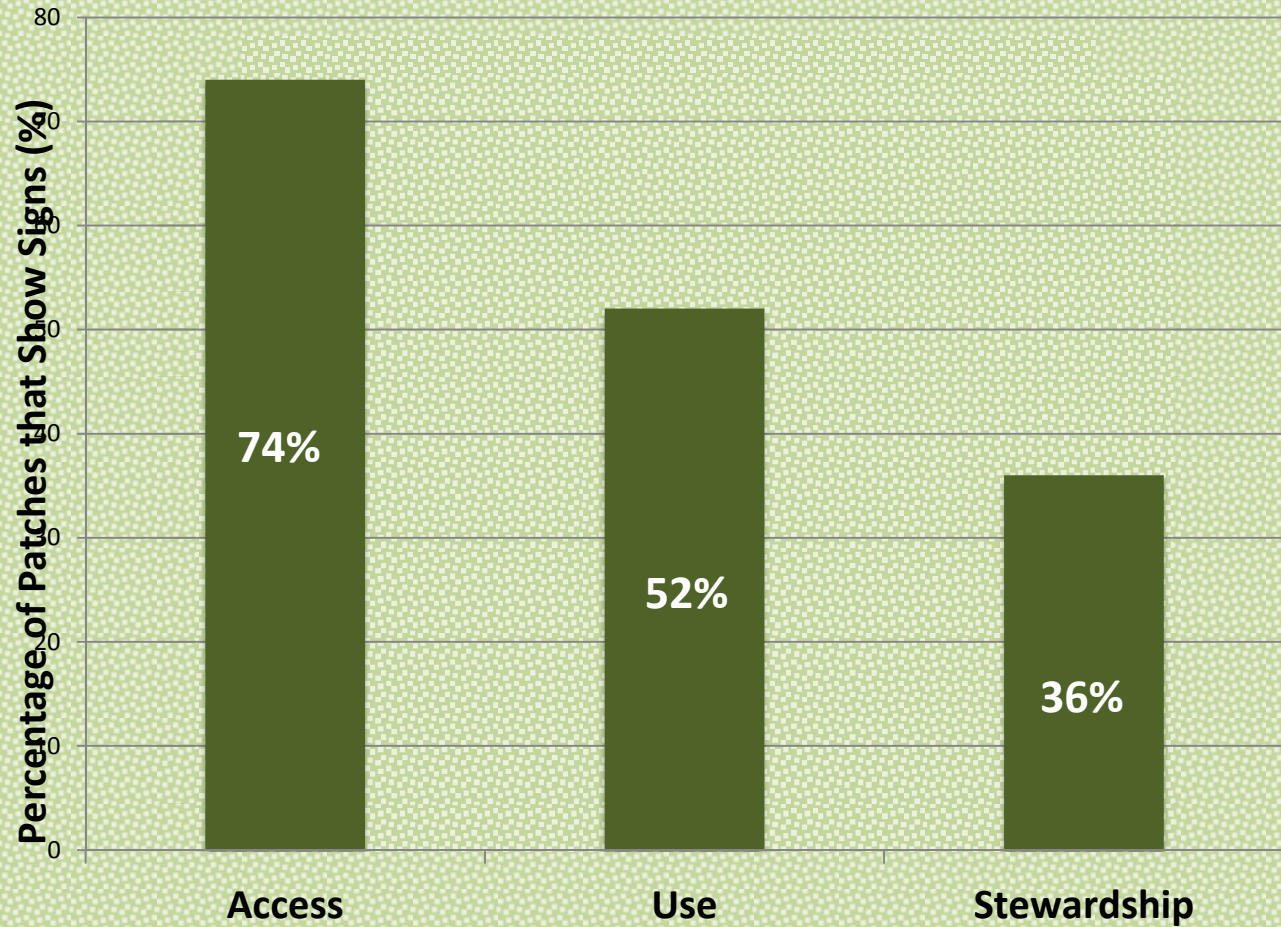
## Tracking Bird Movements on Migration



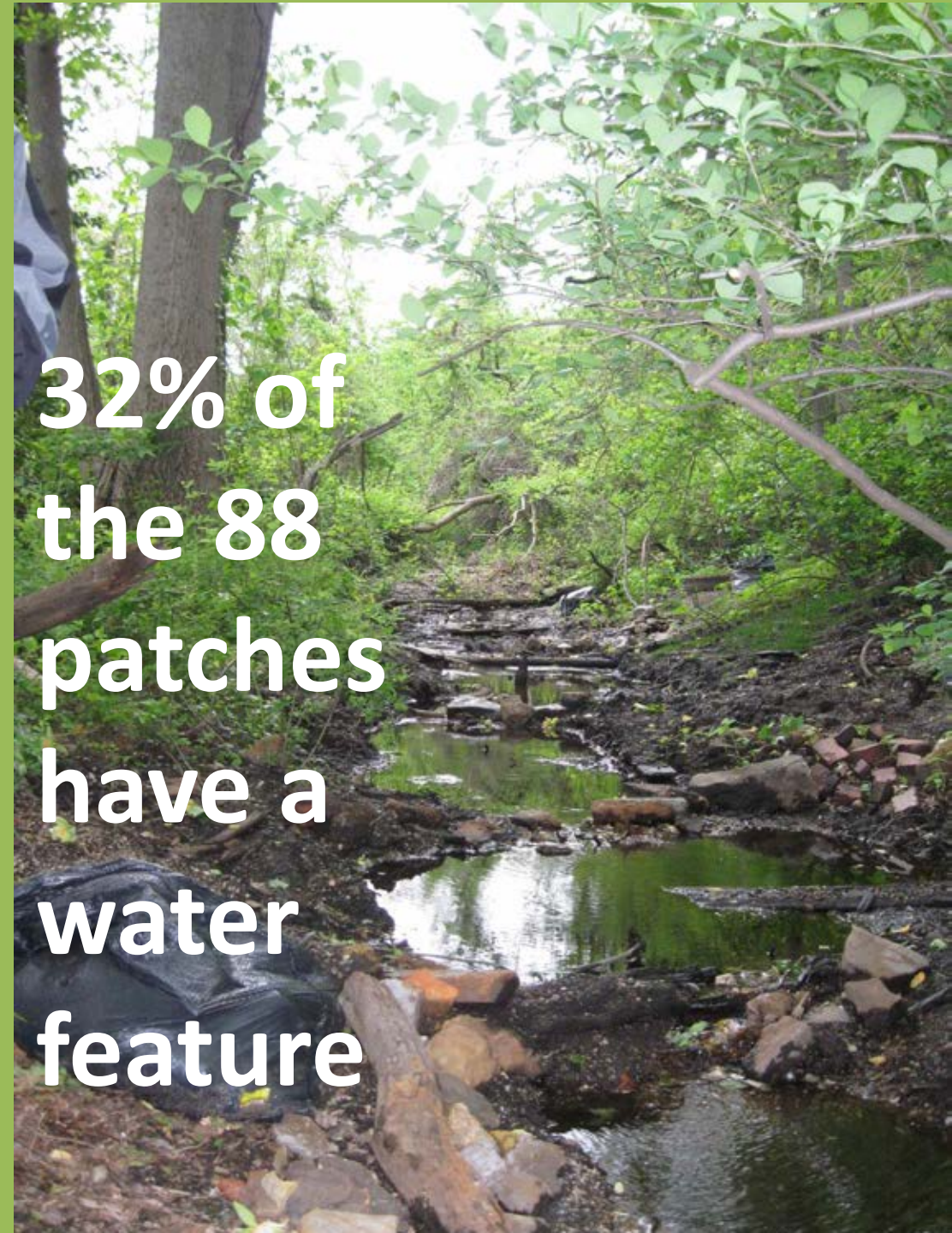
# Results: Forest Patch Perceptions

Theme	% of Respondents	Description
KIDS / EDUCATION	45%	<p>exploration, nature walks, treehouse, student projects</p> <p>“we take pictures when we see a lot of deer, and then I allow my little babies to come out and see”</p> <p>“we used to have bonfires...everybody used to sit around the fire”</p>
IDENTITY	38%	<p>sense of place, cultural heritage</p> <p>“I’m a nature lover” “I am connected to the earth”</p> <p>“it reminds me of home...it’s the closest I get to home”</p> <p>“that’s my thing..I love woods” “I’ve been a woods person for a lot of yrs”</p> <p>“I’m a strong advocate for the forest!”</p>
ENVIRONMENTAL BENEFITS	17%	<p>oxygen, erosion control, shade, water quality</p>
PRIVACY / REFUGE	14%	<p>quiet, peaceful, relaxing, escape, sense of place</p> <p>“I enjoy the peacefulness”</p> <p>“Hearing the birds...it’s just very relaxing”</p> <p>“that’s a good private place for talking...the woods don’t tell”</p>

## Human Interest in 88 Patches Surveyed



**32% of  
the 88  
patches  
have a  
water  
feature**







# NatureServe®

A Network Connecting Science With Conservation



# Communication and Engagement Among MET Stakeholders

Nicholas Moy

LandScope America Coordinator

[www.LandScope.org](http://www.LandScope.org)

# Actionable Knowledge to Sustain Biodiversity

Providing the Americas With Solutions for Conservation and Natural Resource Management



MacArthur Award for  
Creative & Effective  
Institutions

# LandScope America

The shared  
conservation  
priority system  
for the Americas



American Marten (*Martes americana*)  
NatureServe Global Status: Secure (G5)  
Photo | Larry Master



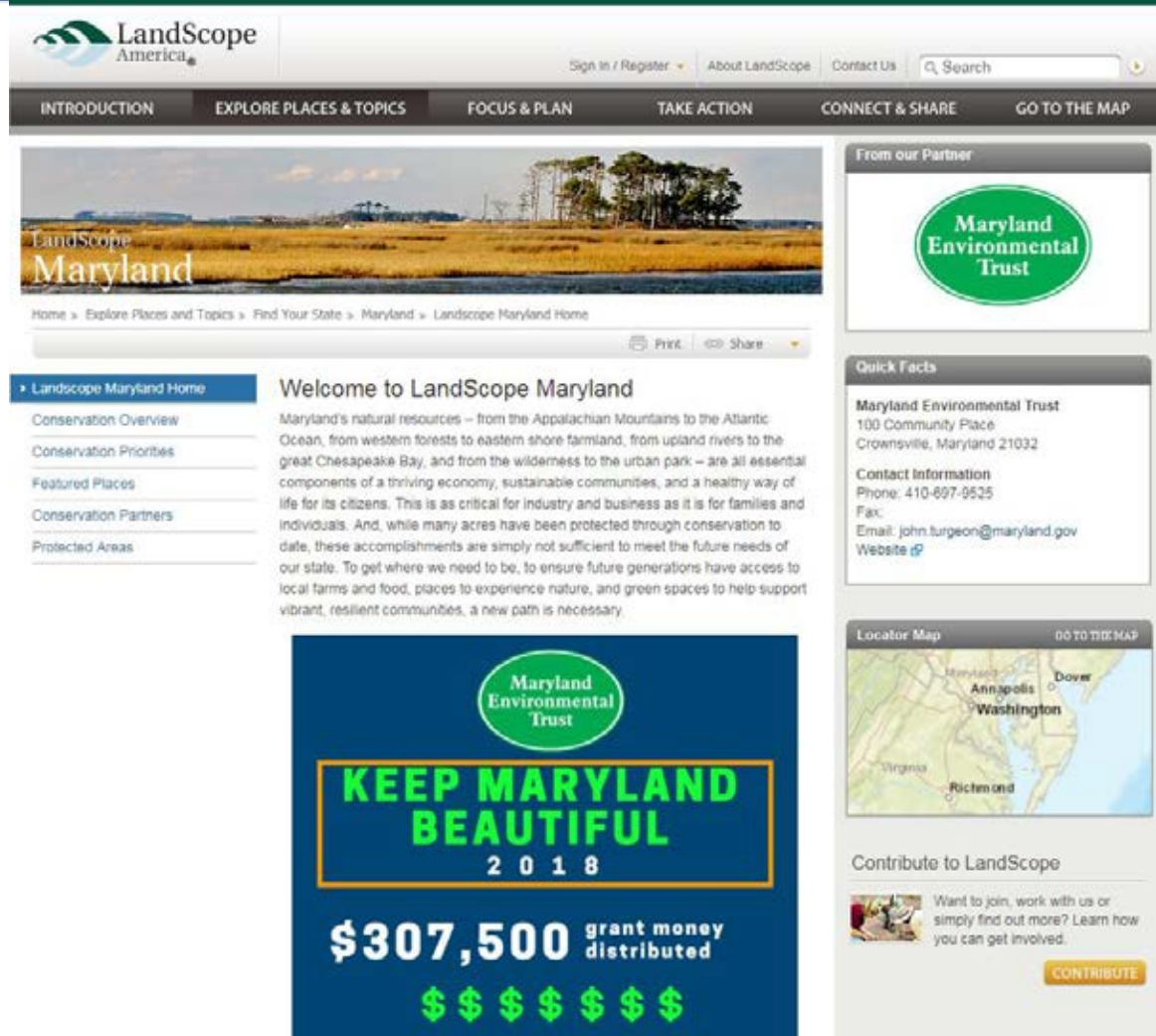


+



[www.LandScope.org/Maryland](http://www.LandScope.org/Maryland)

# Communicate with Partners and the Public



LandScope America

Sign In / Register | About LandScope | Contact Us | Search

INTRODUCTION | EXPLORE PLACES & TOPICS | FOCUS & PLAN | TAKE ACTION | CONNECT & SHARE | GO TO THE MAP

LandScope Maryland

Home > Explore Places and Topics > Find Your State > Maryland > Landscape Maryland Home

Print | Share

**Landscape Maryland Home**

- Conservation Overview
- Conservation Priorities
- Featured Places
- Conservation Partners
- Protected Areas

### Welcome to LandScope Maryland

Maryland's natural resources – from the Appalachian Mountains to the Atlantic Ocean, from western forests to eastern shore farmland, from upland rivers to the great Chesapeake Bay, and from the wilderness to the urban park – are all essential components of a thriving economy, sustainable communities, and a healthy way of life for its citizens. This is as critical for industry and business as it is for families and individuals. And, while many acres have been protected through conservation to date, these accomplishments are simply not sufficient to meet the future needs of our state. To get where we need to be, to ensure future generations have access to local farms and food, places to experience nature, and green spaces to help support vibrant, resilient communities, a new path is necessary.

**Maryland Environmental Trust**

**KEEP MARYLAND BEAUTIFUL**  
2018

**\$307,500** grant money distributed

\$\$\$\$\$\$\$\$

**From our Partner**

**Maryland Environmental Trust**

**Quick Facts**

**Maryland Environmental Trust**  
100 Community Place  
Crownsville, Maryland 21032

**Contact Information**  
Phone: 410-697-9525  
Fax:  
Email: john.turgeon@maryland.gov  
Website

**Locator Map** | GO TO THE MAP

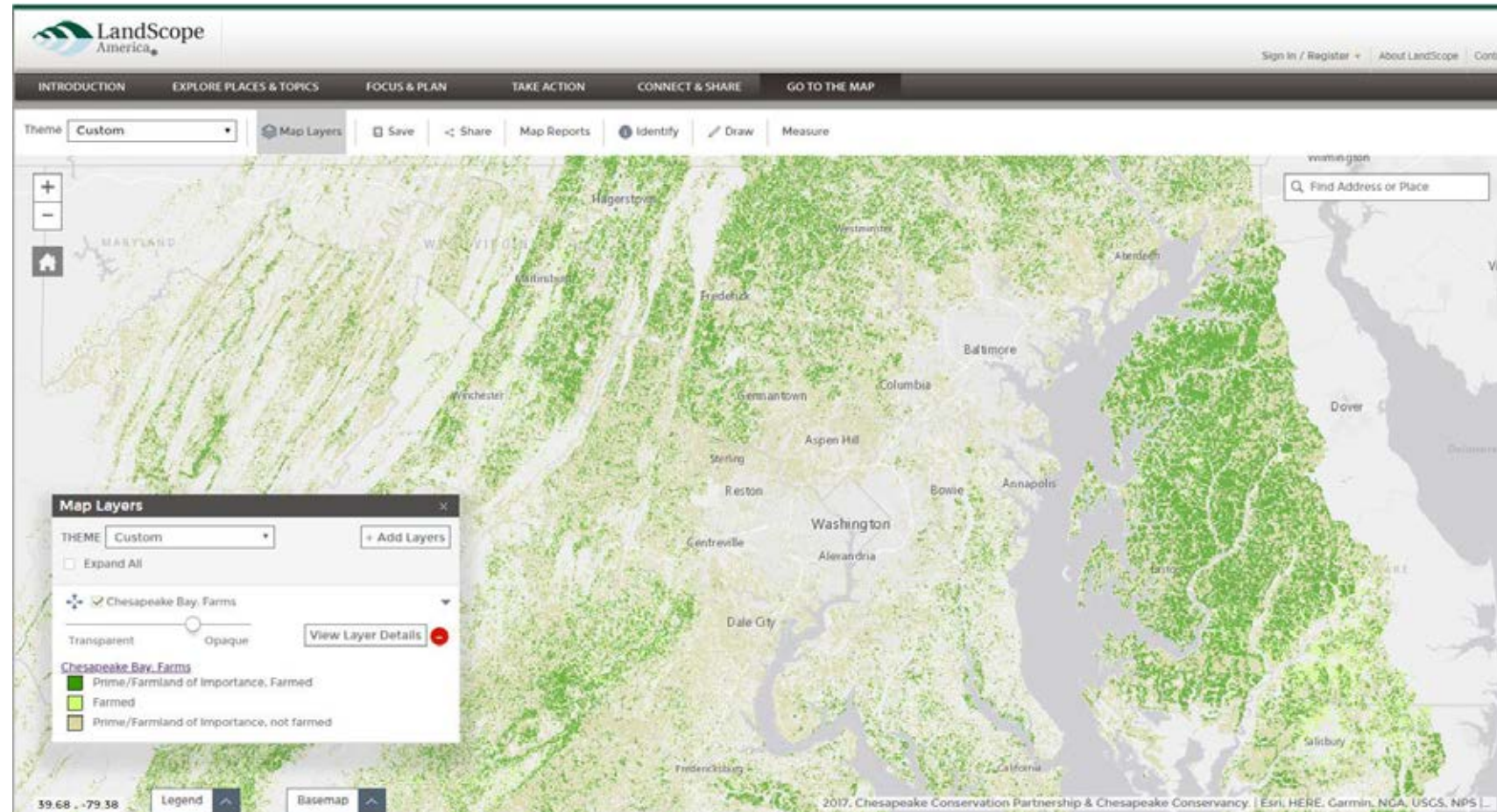
**Contribute to LandScope**

Want to join, work with us or simply find out more? Learn how you can get involved.

**CONTRIBUTE**

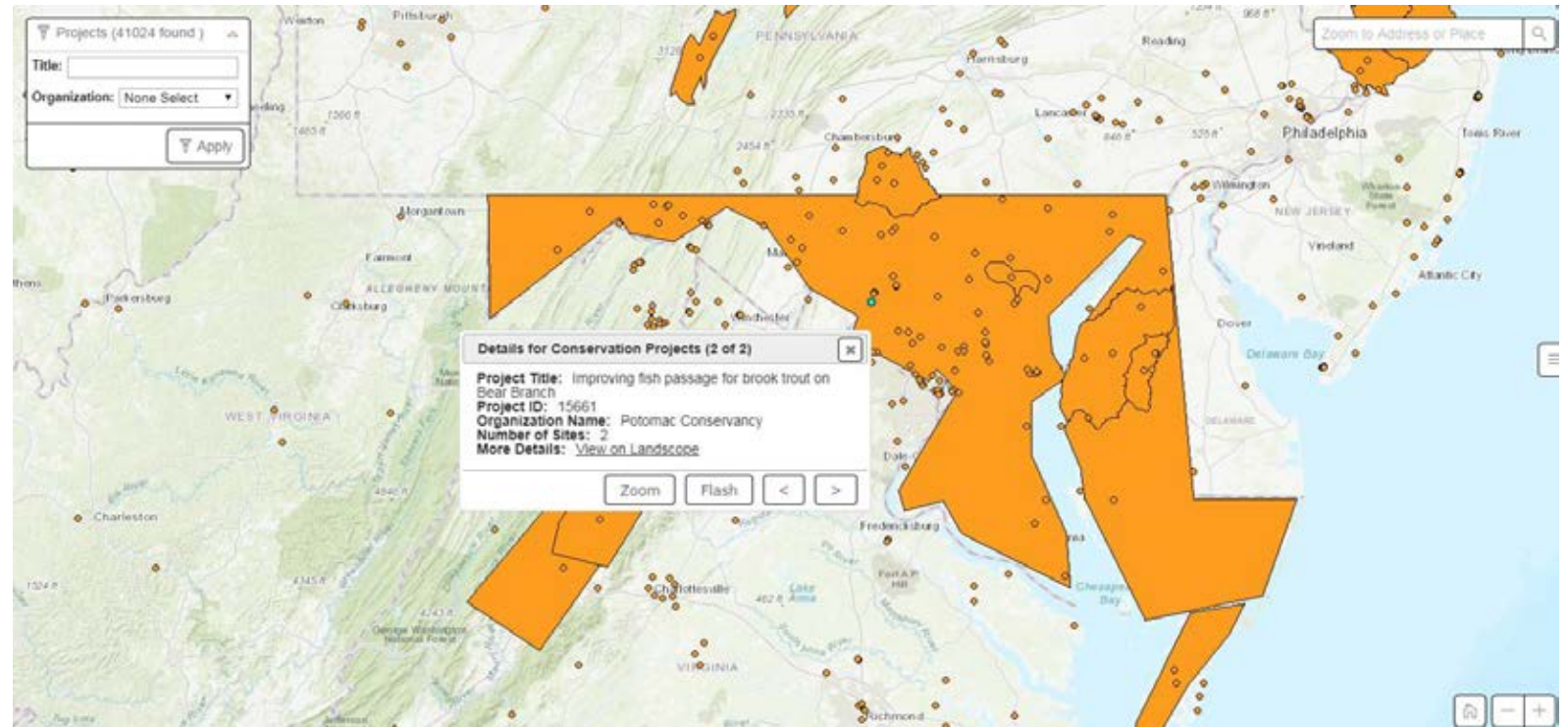
Maryland Environmental Trust  
LandScope Portal Homepage  
[www.LandScope.org/Maryland](http://www.LandScope.org/Maryland)

# Access the Conservation Communities Go-to Map Resources



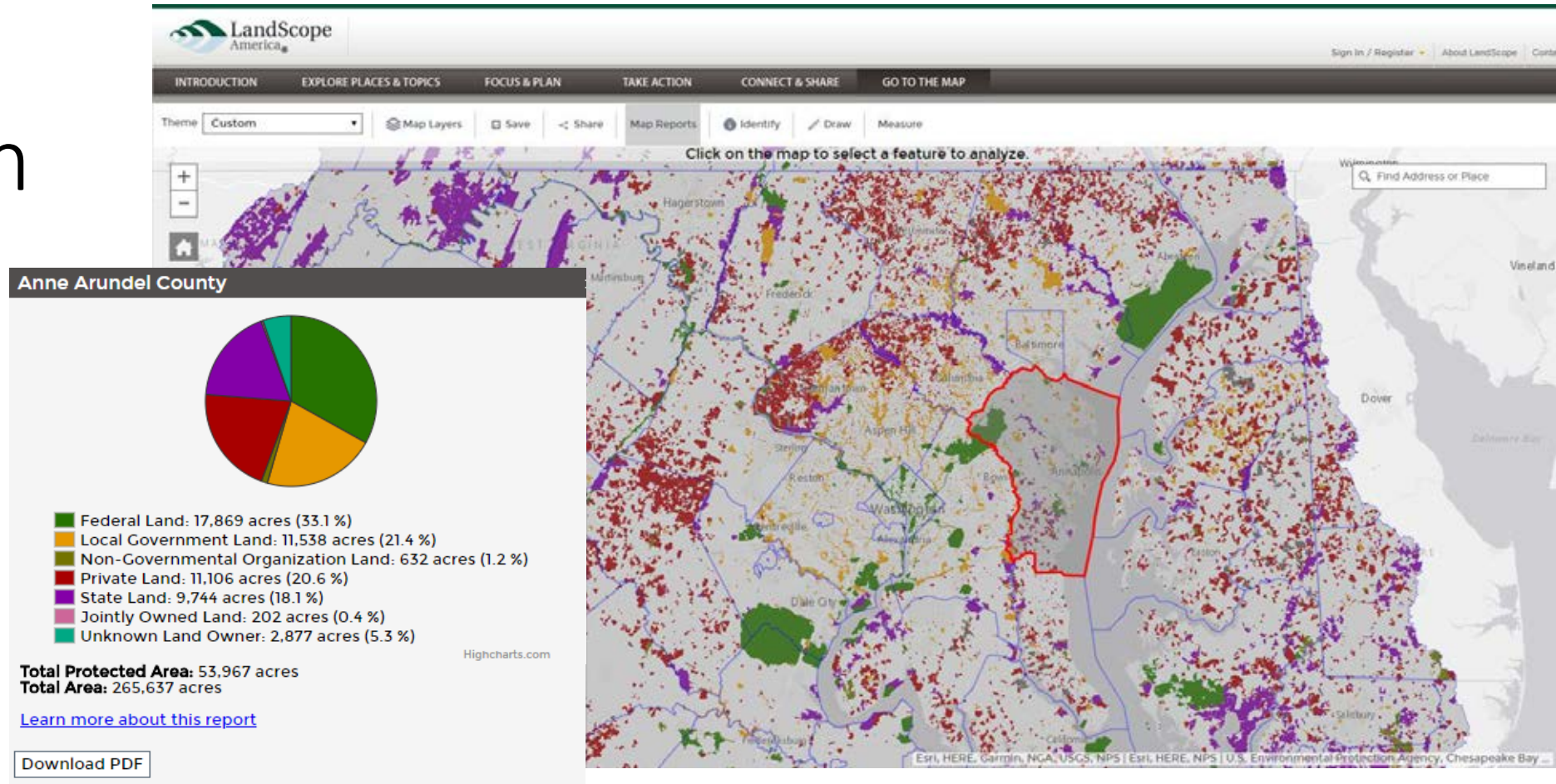
LandScope makes available over 300 maps from conservation partners including prime farmlands pictured here  
Coming soon: Your maps!

# Join the Largest Registry of Conservation Projects



Register conservation projects in the region  
Coming Soon: easy project registration through portal

# Track Conservation Success



Run reports by county or watershed to determine the status of land conservation

Coming Soon: custom reporting based on partnership goals



# Nicholas Moy

NatureServe

LandScope America Coordinator

User Experience & Design Specialist

[Nicholas\\_Moy@NatureServe.org](mailto:Nicholas_Moy@NatureServe.org)