



# 2017 *Maryland* Land Conservation Conference

STRENGTHENING LAND TRUSTS FOR THE NEXT CENTURY



---

**TO INSPIRE AND ENGAGE**

---





---

## Board of Trustees

James W. Constable, Chair  
Honorable S. Jay Plager, Vice Chair  
Doris Blazek-White, Treasurer  
Mary Burke, Secretary  
Major Gary S. Burnett  
Goodloe E. (Geb) Byron, Jr.  
Richard D'Amato  
David Greene  
Philip R. Hager  
Julia Jitkoff  
Toby Lloyd  
Royden Powell, III  
Michael Pretl  
Sarah J. Taylor-Rogers, PhD

---

## Ex Officio Members

Senator Addie C. Eckardt  
Tom McCarthy, Governor's Representative  
Delegate Dana Stein

---

## Area Representatives

Adam Block  
Bill Crouch  
Charlotte D. Hawes

---

## Trustees Emeriti

King Burnett  
Ajax Eastman  
Ellen Kelly  
John C. Murphy  
Henry A. Virts

---

## Maryland Environmental Trust

*is dedicated to working with communities, local land trusts, conservation partners and citizens to protect Maryland's most treasured landscapes and its scenic, cultural and natural resources as a legacy for future generations through its conservation easement, stewardship, grants and land trust assistance programs.*

---

## Staff

William H. Leahy, II  
Director

Megan Benjamin  
Western and Central Region Planner

Ann Gutierrez Carlson  
Eastern Region Planner

Jon Chapman  
Monitoring and Stewardship Program Manager

Michelle Grafton  
Land Trust Assistance Coordinator

Tanya M. Mekeal  
Office Manager

David Minges  
Volunteer Program Coordinator

Wendy Stringfellow  
Communications and Development Coordinator

Lynette Tully  
Easement Stewardship Specialist

John Turgeon  
Conservation Easement Program Manager and Southern Region Planner

---





# Table of Contents

<b>Leadership</b>	<b>1</b>
<b>Welcome</b>	<b>3</b>
<b>Pearlstone Floor Plan</b>	<b>4</b>
<b>Agenda at a Glance</b>	<b>5</b>
<b>Lightning Talks</b>	<b>6</b>
<b>Session Descriptions</b>	<b>8</b>
<b>Award &amp; Grant Recipients</b>	<b>11</b>
<b>Speaker Biographies</b>	<b>12</b>
<b>2017 Sponsors</b>	<b>15</b>

## *Thank you!*

*Maryland Environmental Trust wishes to thank staff, board members and especially the Land Trust Advisory Committee who participated in the planning and execution of the 2017 Maryland Land Conservation Conference.*



# Welcome to the Maryland Land Conservation Conference

Maryland Environmental Trust, together with our partners and sponsors, is proud to bring together land trusts, conservancies, local and state government agencies, heritage organizations, community groups, members of the agricultural community and other partners for the annual statewide land conservation conference. This event provides a unique opportunity for a comprehensive discussion about the future of land conservation in our region.

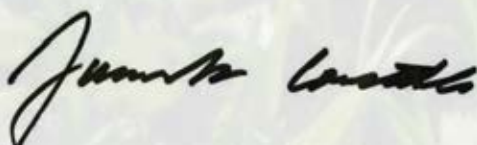
This year's theme is "Thinking Broadly & Engaging Community - Strengthening Land Trusts for the Next Century." As we discuss our current conservation challenges, we also continue to expand our thinking about the valuable role land trusts and their partners play. As we gather together to share stories, and learn about recent technological innovations, exciting new partnerships, and the opportunity to see new strategies in action, we help bring the conservation community closer to the progress which broadens the impact our missions dictate.

Of particular interest at this year's event, are topics related to community engagement, organizational development and communications, sustainability, and regional partnerships – all timely and pertinent to the land conservancy community.

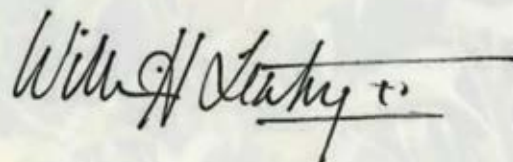
Special thanks to our generous group of sponsors, who help MET keep the conference accessible and affordable to attendees. We are also grateful for our partner land trusts, speakers, and attendees for their continued support.

The exchange of new ideas and these meaningful discussions about land conservation's role in securing a healthy future for our communities is as important now as ever; as we strive to protect open space, parks for people, forests, farmland, and wildlife areas. Thank YOU for your long term commitment to this vital work, and we hope you have a wonderful time!

Sincerely,



James W. Constable  
Maryland Environmental Trust Chair



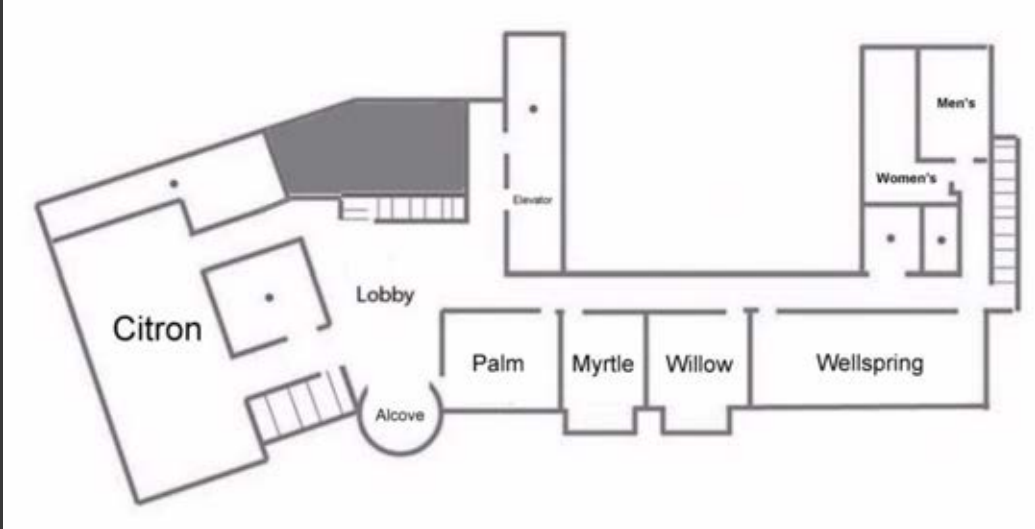
William H. Leahy II  
Director



# Pearlstone Floor Plan

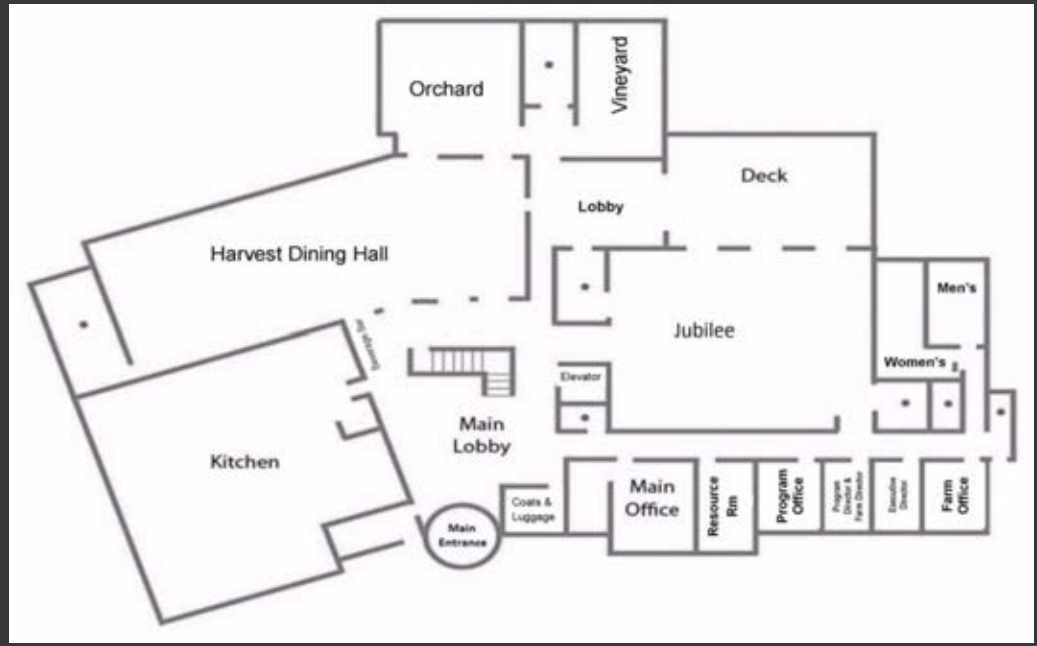
## Second Floor

Cirton is located upstairs on the second floor of Pearlstone.



## Main Level

Jubilee, Orchard and Vineyard are located on the main level of Pearlstone.





# Thursday, June 8

## Agenda at a Glance

8 : 3 0 a m	Registration Opens		
8:30 am - 9:30 am	Continental Breakfast and Networking		
9:30 am - 9:50 am	<p><b>Welcome:</b> James W. Constable, MET Board of Trustees Chair</p> <p><b>Opening Remarks:</b> William H. Leahy II, Executive Director of MET <i>(Jubilee)</i></p>		
9:50 am - 10:50 am	<p><b>Lightning Talks: Exploring the Challenges and Opportunities Facing Conservation in the 21st Century</b> <i>(Jubilee)</i></p>		
10:50 am - 11:10 am	20 Minute Break		
11:10 am - 12:20 pm	Morning Meeting A		Morning Meeting B
	<p><b>How the Captain John Smith Trail Establishes a New Paradigm for Land Conservation</b> <i>(Citron)</i></p>		<p><b>Beer, Brides, Brawls and Brussel Sprouts: Addressing Permanence and Viability</b> <i>(Orchard)</i></p>
12:20 pm - 1:35 pm	Lunch and Awards Ceremony <i>(Jubilee)</i>		
	<u>Track 1:</u> Managing the Fundamentals	<u>Track 2:</u> Co-Innovation	<u>Track 3:</u> Next Century Issues for Land Trusts
1:35 pm - 2:50 pm <i>Concurrent Sessions A</i>	<p><b>Managing Leadership Transitions</b> <i>(Orchard)</i></p>	<p><b>Connecting Conservation for Bay Health</b> <i>(Citron)</i></p>	<p><b>Beyond Acres: Connecting People to the Land</b> <i>(Vineyard)</i></p>
2:50 pm - 3:10 pm	20 Minute Break		
3:10 pm - 4:45 pm <i>Concurrent Sessions B</i>	<p><b>Effective Storytelling for Land Trusts</b> <i>(Vineyard)</i></p>	<p><b>A Toolkit for Strategic Conservation in an Opportunistic World</b> <i>(Orchard)</i></p>	<p><b>Regional Conservation Partnerships: How They Benefit Land Trusts and Other Partners</b> <i>(Citron)</i></p>
4 : 4 5 p m	<i>Thank you for participating in the Maryland Land Conservation Conference</i>		



# Lightning Talks

## *Exploring the Challenges and Opportunities Facing Land Trusts and Conservation Communities in the 21st Century*

---

### **Tracking Easements in a New Web-Based Mapping Application**

*Colin Stief: Senior Application Designer – Chesapeake Conservancy*

This presentation will describe a web-based mapping application being developed by the Chesapeake Conservancy, in partnership with MET, that supports easement monitoring efforts. Key features include online/offline field data collection, a centralized database of reports, aerial imagery monitoring, and access to updated property information from Maryland DOIT open data portal.

### **Intro to Easements: College Students and Land Stewardship**

*David Minges: Volunteer Program Coordinator – Maryland Environmental Trust*

At St. Mary's College, a new Keystone Seminar in Environmental Studies gives students an in-depth look at the history, issues, and details of land conservation. The Patuxent Tidewater Land Trust and Maryland Environmental Trust add resources, field training, and site-visit assistance. This pilot partnership helps shape the next generation of land conservation advocates as they meet landowners and monitor local conservation easements.

### **Maryland's Park Equity Analysis**

*Sandi Olek: Senior Policy Advisor – Chesapeake & Coastal Services, Dept. of Natural Resources*

The Park Equity analysis was created to provide an initial quantitative tool to extend public access to nature to underserved communities, foster community connections, and grow future stewards of our natural world. The Park Equity Analysis is built upon the US Census data analyzed at the Census Tract Block Group level, combined with maps of state and local parks. Individual layers that combine density, age, income and proximity contribute to a combined score for prioritizing need for park space. This session will include an overview of how to access the data and an example of how it can be used.

### **Introduction to the Anne Arundel County Forestry and Forested Land Protection Grant Program**

*Jeffrey Popp: Senior Program Officer – Chesapeake Bay Trust*

Anne Arundel County Government and the Chesapeake Bay Trust announce a partnership to provide funds for forestry projects and land protection in Anne Arundel County. The goal of this program is to implement cost-effective reforestation and greening projects and increase the number of acres of protected forested land in the County. By increasing tree cover and expanding green areas, erosion can be reduced; water and soil quality can be improved; airborne pollutants such as particulates, nitrogen oxide, and carbon monoxide can be filtered; and summer temperatures and resulting ozone pollution and energy use can be reduced. By protecting forested land, valuable ecological services such as habitat, water quality, and flood control can be ensured for the future. This session will briefly introduce the program and provide examples of properties that qualify for funding.

## Using GIS Data to Identify Priority Opportunities for Eco-Functioning Spaces in the Maryland Suburbs of DC

*Rachel Toker: President & CEO – Urban Ecosystem Restorations*

Available GIS data to identify and prioritize target areas (within the Potomac and Anacostia watersheds of Montgomery and Prince George's Counties) that are appropriate for, and in need of, eco-functioning spaces. It will discuss some of the unique methods and approaches we used for this work and present findings.

## Chicken Bridge Road: Innovative Funding to Address an Underserved Community's Needs

*Eric Helm Buehl: Watershed Restoration Specialist – University of Maryland Sea Grant Extension*

Located "downstream" of the Town of Ridgely in Caroline County, this mostly-African American community has endured the ill-effects of stormwater runoff for years due to continued growth upstream, undersized drainage pipes, and limited drainage outfalls. Trapped between a town they are not residents of, a state agency that has no jurisdiction, and a county with limited resources, the residents have suffered in silence. In 2013, a heavy rain resulted in an incident in which several puppies drowned, spurring one of the elderly residents to politely, but persistently, ask for assistance. Since then, Caroline County Planning and Codes Environmental Planner Leslie Grunden and UMD Sea Grant Watershed Specialist Eric Buehl have been working continuously to bring relief to an area that is literally drowning in stormwater. The two have searched high and low for anyone who will listen and can provide resources to help fund this community-based restoration project.

## Conservation Burial: A Land Conservation Opportunity

*Jane Berkow: President – Green Burial Association of Maryland*

At a time when we are challenged to do something positive to protect the health of the environment, one of the most powerful acts an individual or a group of individuals can take to protect the planet is to establish a conservation burial ground whereby land use is restricted by a permanent conservation easement, with a certified land trust to preserve the land in its natural state in perpetuity. Conservation burial is a part of the growing worldwide green burial movement.

## The Why and How of Retrofitting "subURDLia"

*Barbara L. Hopkins, JD, ASLA: Executive Director – NeighborSpace of Baltimore County*

This lightning talk will attempt to explain why Baltimore County's inner suburbs, which lie within one of the nation's oldest growth lines (the Urban Rural Demarcation Line or "URDL"), score poorly on many characteristics of livability. It will also address what NeighborSpace is doing to address this challenge by retrofitting small parks, gardens, trails and natural areas into these communities.

## Funding Updates – Maryland's Land Preservation Programs

*Ann H. Jones: Director – Partners for Open Space*

The Governor and the Maryland Legislature all have a hand in determining how much funding is available for the programs that fund our farms, parks, playgrounds and historic areas. What happened in the 2017 legislative session, and what should we look forward to in 2018?





# Session Descriptions

---



Morning Meetings | 11:10 am – 12:20 pm

---

## How the Captain John Smith Trail Establishes a New Paradigm for Land

The Nation's first national historic trail that is on water, the Captain John Smith Chesapeake National Historic Trail offers a unique opportunity to develop cooperative management partnerships of a scale and complexity not heretofore attempted among local, state, federal public and private agencies and organizations. The iconic 17th century landscapes that remain to demark the routes of Smith's voyages cannot and will not be protected by the NPS alone, but only through joint efforts that are still in formulation. (ALL)

Joel Dunn: President and CEO, Chesapeake Conservancy  
Destry Jarvis: President – Outdoor Recreation & Park Services, LLC

## Beer, Brides, Brawls, and Brussel Sprouts

Landowners across the state who want to protect their land also want to ensure they have economic options that will allow current and next generations to stay on their land. The issue is critical to ongoing stewardship and managing easement lands. This topic will explore the methods and approaches various agencies and land trusts are using to address this increasingly important issue. (ALL)

*Jon Chapman: Stewardship Manager - Maryland Environmental Trust*  
*Megan D'Arcy: Stewardship Manager – Eastern Shore Land Conservancy*  
*Kristen Maneval: Assistant Attorneys General – Office Attorney General, Department of Natural Resources*  
*Roger Medoff: Assistant Attorneys General – Office Attorney General, Department of Natural Resources*  
*Stacy Schaefer: Associate Director Land Conservation - Department of Natural Resources, Land Acquisition & Planning*  
*Carol West: Executive Director – Maryland Agricultural Land Preservation Foundation*

Concurrent Sessions A | 1:35 pm – 2:50 pm

---

## Managing Leadership Transitions

Many organizations are facing a major leadership transition in the next few years. Is it possible to use such a leadership change as an opportunity to grow the capacity of your land trust? Managed well, a leadership change honors the past, inspires creativity among board members and staff, lays the foundation for expanded organizational performance –

*(Managing Leadership Transitions continued...)*

– and creates an environment in which the new leader is likely to thrive. Managed poorly, a leadership change is often a stressful, anxious experience that causes an organization to lose momentum, compromise the services it provides, jeopardize key relationships with landowners and others – and make it difficult for the new leader to succeed. Learn how to set your land trust up for success by helping board members, staff, funders, and clients let go of the way things were, work through a period of uncertainty, then adjust to a new leadership environment. (INTERMEDIATE)

Carol Hamilton: Senior Associate – Institute of Conservation Leadership

## **Connecting Conservation for Bay Health**

Land use, protection, and stewardship are critical for the health and safety of our local waterways and the Chesapeake Bay. Land trusts play a key role in restoring clean water along with many other values in the Bay watershed—and they have the capacity to do much more with greater collaboration, tools, capacity, and financial resources. During this session, we will take a landscape-scale view of how land trusts and land conservation can help advance Chesapeake restoration goals, including: strategies and approaches for improving and protecting water quality using land conservation and stewardship; how to achieve long-term, broad-scale conservation goals, to protect multiple values in the region, through new and expanded resources for land trusts and partners—including new mapping and analysis of Chesapeake conservation goals; and efforts to develop new funding mechanisms to support conservation and restoration, including the possible crediting of future conserved lands under the Bay Program’s updates to the Bay TMDL and other possible measures. (ALL)

Jennifer Herzog: Chesapeake Program Manager - Land Trust Alliance

Jonathan Doherty: Assistant Superintendent - National Park Service, Chesapeake Bay Office

John Griffin: Program Manager - Chesapeake Conservation Partnership

## **Beyond Acres: Connecting People to the Land**

Maryland land trust professionals have had tremendous land preservation successes. But we have often failed to communicate how those successes impact the lives of Marylanders. Last May we sponsored a summit that began to examine ways to move the preservation movement into the next century. A clear message from the summit was that we need to broaden the constituency for preservation if we are to effectively convey both the current critical need for additional preservation and to highlight the accomplishments that have been made. Today’s session will be highly interactive and will continue the dialogue. We will be asking you to bring examples of innovative programs you have been working on and an open mind to help to craft a message for conservation moving forward for all Marylanders. (ALL)

Ann H. Jones: Director – Partners for Open Space

*Concurrent Sessions B* | 3:10 pm – 4:45 pm

---

## **Transform Your Communications Through Storytelling**

Whether you need people to donate, volunteer or advocate, storytelling can be one of the most powerful tools available to you. Some people are born storytellers, but storytelling is as much science as art, and anyone has the capacity to be an effective and engaging storyteller. Learn about how and why storytelling works and what makes a good story, then craft and hone your own story. (ALL)

Joshua Lynsen: Media Relations Manager – Land Trust Alliance



## A Toolkit for Strategic Conservation in an Opportunistic World

Strategic conservation benefits greatly from the use of spatial data and tools, but most land trusts have lacked the capacity to use such tools and information. Developments in data and technology now allow a range of users to do strategic conservation, progressing from simple online viewing to advanced analysis and planning. A toolkit comprised of the established tools LandScope and NatureServe Vista are helping land trusts achieve strategic conservation. This session introduces a "guided opportunism" framework to realistically apply strategic conservation tools for a variety of capacity levels. Participants will be given a guided tour of the tools and spatial data available through LandScope Chesapeake, including a new set of watershed-wide priority conservation goal maps that can provide the strategic conservation context for their work. Feedback from this session will inform new features of the tool and a training module to support land trust needs. (INTERMEDIATE)

Lori Scott: Chief Information Officer – NatureServe

Jonathan Doherty: Assistant Superintendent – National Park Service, Chesapeake Bay Office

Jennifer Miller Herzog: Chesapeake Program Manager – Land Trust Alliance

## Regional Conservation Partnerships: How They Benefit Land Trusts and Other Partners

The audience will learn about a scalable model for regional-scale collaborative conservation thriving in New England and Eastern New York, called Regional Conservation Partnerships (or RCPs). We'll cover how land trusts coordinate and collaborate with other groups and agencies to engage new and unexpected partners, identify the best land to protect, build the capacity of their organization, and access more and new sources of funding. A review of case studies of three RCPs will focus on three tools (spatial information, governance, and finance) these collaboratives use to reap benefits. Ample Q&A and break-out groups will give people time to "kick the tires" and see whether this model may be useful to them. (INTERMEDIATE)

Bill Labich: Senior Conservationist – Highstead Foundation

-----



## Honoring Wink Hastings and John Hutson

Friends, colleagues and  
true champions of conservation

*UNLESS someone like  
you cares a whole  
awful lot, nothing is  
going to get better.  
It's not.*

- The Lorax

## Aileen Hughes Award

Each year, the MET Board of Trustees presents the Aileen Hughes award to an individual representing a Maryland land trust for outstanding leadership, partnership and/or innovation in conservation. This annual award is presented in honor of the late Aileen Hughes, a true leader of the conservation movement in Maryland. The 2017 Aileen Hughes Award recipient is:

*Bill Kilby*

*Cecil Land Trust Board of Directors President*

This year's Aileen Hughes Award recipient is Bill Kilby, Cecil Land Trust Board of Directors President, who has demonstrated outstanding leadership and innovation. Bill's noteworthy accomplishments include: establishing Cecil Land Trust, supporting numerous conservation projects, growing community partnerships, developing educational programs that engage the next generation of environmental stewards and dedication to ensure conservation continues to grow as a priority of life in Cecil County.

## Janice Hollmann Grants

Each year, the MET Board of Trustees presents the Janice Hollmann Grants to support land trusts in Maryland. These grants are named in memory of Janice Hollmann who exemplified citizen leadership of local land trusts in Maryland. She co-founded the Severn River Land Trust and the Arundel Conservation Trust, and served on the Severn River Commission. Funding for these matched grants are made possible by the Maryland State Highway Administration. The 2017 Janice Hollmann Grants recipients are:

*Annapolis Conservancy Board  
Baltimore Green Space  
Conservancy of Charles County  
Eastern Shore Land Conservancy*

*Harford Land Trust  
Lower Shore Land Trust  
NeighborSpace Baltimore County  
Urban Ecosystem Restoration*





# Speaker Biographies

**Jane Berkow:** *President – Green Burial Association of Maryland*

Jane is an Organization Development practitioner who retired from the U.S. Department of Agriculture in 2014 after 20 years of service with the Animal Plant Health Inspection Service (APHIS) Plant Protection and Quarantine. Jane planned and facilitated National Invasive Council meetings; facilitated the development of numerous Strategic Plans including one with the United States, Mexico and Belize to coordinate a pest management response to a major citrus disease. She also facilitated many high-level policy development meetings among scientists, State counterparts and with the public. Jane is a Master Gardener and strong environmental advocate.

<http://greenburialmaryland.org/> | Email: [janeberkow@gmail.com](mailto:janeberkow@gmail.com) | Phone: 410-664-5692

**Eric Helm Buehl:** *Watershed Restoration Specialist – University of Maryland Sea Grant Extension*

Eric Buehl is a Regional Watershed Restoration Specialist with the University of Maryland Sea Grant Extension in their Watershed Protection and Restoration Program. He provides technical assistance and outreach to all levels of government, non-profit organizations, and communities seeking solutions to a variety of water quality issues on the mid and upper Eastern Shore including Caroline, Talbot, Queen Anne's, Kent, and Cecil Counties. Eric's background is in stormwater management, habitat and water quality restoration project design and implementation, and land surveying. He resides in the town of Queen Anne with his wife and two daughters.

<http://extension.umd.edu/watershed> | Email: [ebuehl@umd.edu](mailto:ebuehl@umd.edu) | Phone: 410.827.8056 ext. 176

**Jon Chapman:** *Stewardship Manager - Maryland Environmental Trust*

Jon received his BA from Cornell University in Biology and Society (emphasis on Natural Resources Policy) and his MS from the University of Wisconsin-Madison in Forest Science. Jon has served with MET for 14 years, and is currently Stewardship Manager. His prior employment includes the Institute of Tropical Forestry in Puerto Rico, the University of Wisconsin-Madison, the Ecosystems Center of the Marine Biological Laboratory in Massachusetts, and the State Forest Conservation Program of the Maryland Department of Natural Resources. Jon enjoys kayaking and fishing, and has served on several park and land trust boards in the Annapolis area.

<http://dnr.maryland.gov/met> | Email: [jon.chapman@maryland.gov](mailto:jon.chapman@maryland.gov) | Phone: 410.697.9519

**Megan D'Arcy:** *Stewardship Manager - Eastern Shore Land Conservancy*

Megan is the Stewardship Manager and charged with ensuring ESLC meets its commitment to perpetually uphold the terms of each of its conservation easements held on 48,879 acres of the beautiful Eastern Shore. She loves her work and enjoys time in the field with easement landowners. Megan came to ESLC in 2009. She has a background in natural resource management and holds a Masters of Environmental Studies from the University of Pennsylvania. Megan is the recipient of the 2016 Aileen Hughes Award and a graduate of the 2016 Shore Leadership class. She lives in Easton with her partner Dan and their two little ones, Wyatt & Ben.

[www.eslc.org](http://www.eslc.org) | Email: [mdarcy@eslc.org](mailto:mdarcy@eslc.org) | Phone: 410.690.4603, ext. 163

**Jonathan Doherty:** *Assistant Superintendent - National Park Service, Chesapeake Bay Office*

Jonathan Doherty helps manage the Chesapeake National Historic Trail and the National Park Service's role in connecting people with the Chesapeake and experiences and conserving special places. He helps facilitate collaborative conservation in the region through assisting the Chesapeake Conservation Partnership. Jonathan has worked in and with parks and special landscapes around the nation. He has degrees in biology from Earlham College and regional planning from the University of Pennsylvania.

[www.nps.gov/chba](http://www.nps.gov/chba) | Email: [Jonathan\\_Doherty@nps.gov](mailto:Jonathan_Doherty@nps.gov) | Phone: 410 260-2477

**John Griffin:** *Program Manager - Chesapeake Conservation Partnership*

Prior to becoming the Program Manager of the CCP, Griffin had a long career in resource and environmental protection, land conservation and related fields serving as both the Deputy Secretary and twice as Secretary of the MD DNR, as General Manager of the Washington Suburban Sanitary Commission and as former Governor Martin O' Malley's Chief of Staff.

[www.chesapeakeconservationpartnership.org](http://www.chesapeakeconservationpartnership.org) | Email: [jgriffin@chesapeakeconservation.org](mailto:jgriffin@chesapeakeconservation.org) |

**Carol Hamilton:** *Senior Associate – Institute of Conservation Leadership*

Carol provides consulting, meeting design and facilitation, training, and coaching, particularly with coalitions, networks and other collaborative initiatives. She has expertise as an innovator leading groups applying human-centered design or design-thinking principles to organizational challenges. She has worked in the association and nonprofit sector for over 20 years, most recently serving as internal innovation consultant for NAFSA, the Association of International Educators. She has also worked with education and social change organizations. Carol graduated from Swarthmore College and completed her Masters in Organization Development from American University in 2013.

[icl.org](http://icl.org) | Email: [carol@icl.org](mailto:carol@icl.org) | Phone: 301.270.2900

**Barbara L. Hopkins, JD, ASLA: Executive Director - Neighborspace of Baltimore County**

Barbara Hopkins is a lawyer and landscape architect, and has served for eight years as the Executive Director of NeighborSpace of Baltimore County, a nonprofit, urban land trust operating in the County's inner suburbs. She is a graduate of the national Land Trust Alliance's Leadership Program and served for three years on the Members Committee of Terrafirma, LTA's Conservation Defense Insurance program. Barbara is a board member of the Friends of Maryland's Olmsted Parks and Landscapes and currently serves as president of the Maryland Chapter of the American Society of Landscape Architects.

<http://www.neighborspacebaltimorecounty.org/> | Email: [barbara@neighborspacebaltimorecounty.org](mailto:barbara@neighborspacebaltimorecounty.org) | Phone: 443.377.3760

**Jennifer Herzog: Chesapeake Program Manager - Land Trust Alliance**

Jennifer is the Chesapeake Program Manager for the Chesapeake Bay Land and Water Initiative, a joint effort of the Chesapeake Bay Funders Network and the Land Trust Alliance. Jennifer brings twenty years of experience in the environmental and nonprofit sector to the Land and Water Initiative, having worked in philanthropy, strategic grassroots and policy, and fundraising. Most recently, she was Chesapeake Bay Foundation's Maryland Grassroots Manager. She has also served as Montana Program Manager for The Wilderness Society and spent a decade at the Seattle-based Wilburforce Foundation as Program Officer for the Yellowstone to Yukon Program. She is based in Annapolis.

[www.landtrustalliance.org](http://www.landtrustalliance.org) | Email: [jmillerherzog@lta.org](mailto:jmillerherzog@lta.org) | Phone: 406 580-6410

**Destry Jarvis: President - Outdoor Recreation & Park Services, LLC**

Destry Jarvis has spent the past 45 years working professionally in the parks, recreation, historic preservation, tourism, and youth engagement fields, in senior positions for both non-profit associations, the US National Park Service, and as a for-profit consultant. For the past fifteen years, Mr. Jarvis has conducted high level consulting in policy and management of units of the national park system, cooperative land use planning at the local, state, federal and international levels, preservation of farmland and open spaces, public lands natural and cultural resources management, tourism marketing and policy, historic preservation, and recreation programs, carrying capacity determination, agri- and eco-tourism, appropriate development in public spaces, and concessions assessments. Prior to his consulting business, Mr. Jarvis' professional positions included Executive Director, National Recreation & Park Association; Vice President, National Association of Service and Conservation Corps; Assistant Director, U.S. National Park Service; Senior Advisor to the Assistant Secretary, U.S. Department of the Interior; Executive Vice President, Student Conservation Association; and Vice President, National Parks Conservation Association.

Email: [destryjarvis2@me.com](mailto:destryjarvis2@me.com) | Phone: 410.646.8543

**Ann H. Jones: Director – Partners for Open Space**

Director of Partners for Open Space, Baltimore County Land Trust Alliance, and the Land Preservation Trust, Ann is familiar with all aspects of donated and purchased easements. A resident of Howard County, Ann's family's farm has been in the family for more than 200 years and is protected with an agricultural preservation easement. Ann a past president of the Howard County Conservancy and previously served as secretary of the Maryland Environmental Trust. Ann is currently a member of the Howard County Agricultural Preservation Advisor Board.

[www.partnersforopenspace.org](http://www.partnersforopenspace.org) | Email: [ann@partnersforopenspace.org](mailto:ann@partnersforopenspace.org) | Phone: 443.690.8420

**Bill Labich: Senior Conservationist – Highstead Foundation**

Bill Labich is a senior conservationist with Highstead Foundation and an associate of Harvard Forest, Harvard University. Bill is the coordinator of the Regional Conservation Partnership (RCP) Network and the New England Forest Policy Group and co-coordinates the Hudson to Housatonic RCP. With a background in forestry and land use planning, Bill organizes, facilitates, and assists others in advancing collaborative regional conservation including raising funds in support of RCPs' development and success. Bill is the author of "The Regional Conservation Partnership Handbook" (2015) and co-author of "Regional Conservation Partnerships in New England" (2013).

[www.highstead.net](http://www.highstead.net) | Email: [mbridges@atlanticcoastconservancy.org](mailto:mbridges@atlanticcoastconservancy.org) | Phone: 678.218.9323

**Joshua Lynsen: Media Relations Manager – Land Trust Alliance**

An accomplished communicator and planner, Joshua Lynsen specializes in helping people clearly convey complex ideas. His skills in traditional and digital messaging have empowered firms to overcome challenges ranging from stagnancy to bankruptcy. Before joining the Land Trust Alliance in 2014, Joshua worked for the Washington Blade newspaper, video game developer n-Space, and the Museum of Science Fiction.

[www.lta.org](http://www.lta.org) | Email: [jlynsen@lta.org](mailto:jlynsen@lta.org) | Phone: 202.800.2239



**Kristen Maneval:** *Assistant Attorneys General – Office Attorney General, Department of Natural Resources*

Kristen O. Maneval is a graduate of University of Virginia (Bachelor's in urban and environmental planning) and University of Baltimore (J.D. 1994). As an Assistant Attorney General at the Maryland Department of Natural Resources, she assists Maryland Environmental Trust in conservation easement drafting and negotiation, stewardship matters and organizational issues. She co-chaired a committee that developed MET's current model easement and has been involved in the development of several recently adopted MET policies.

<http://msa.maryland.gov/msa/mdmanual/08conoff/attorney/html/06ag.html> |

Email: [kristen.maneval@maryland.gov](mailto:kristen.maneval@maryland.gov) | Phone: 410.260.8351

**Roger Medoff:** *Assistant Attorneys General – Office Attorney General, Department of Natural Resources*

Roger Medoff is an Assistant Attorney General at the Maryland Department of Natural Resources, providing legal counsel on matters including conservation easement acquisitions and stewardship for the Department's Rural Legacy and Program Open Space programs. Before moving to Maryland twenty years ago, Roger practiced real estate law in Boston for twelve years. He resides in Columbia with his wife, Juliet, and their "third daughter" (a thirteen year old Schnoodle dog named Gracie), their other two daughters, Maggie and Olivia, being an 18-year old college sophomore and a 24-year old now living and working in North Carolina.

<http://msa.maryland.gov/msa/mdmanual/08conoff/attorney/html/06ag.html> |

Email: [roger.medoff@maryland.gov](mailto:roger.medoff@maryland.gov) | Phone: 410.260.8354

**David Minges:** *Volunteer Program Coordinator – Maryland Environmental Trust*

David Minges is the Volunteer Program Coordinator at the Maryland Environmental Trust. He has served as the Executive Director of Governor's Office on Volunteerism, the Chesapeake Bay Trust, Healthy Howard, Inc., and Habitat for Humanity-Maryland. He has also managed projects at The Pfaltzgraff Corporation, York Area Chamber of Commerce, Blue Cross and Blue Shield, Notre Dame University in Maryland, Gaudreau Architects, and Maryland Technology Development Corporation (TEDCO).

<http://dnr.maryland.gov/met> | Email: [david.minges@maryland.gov](mailto:david.minges@maryland.gov) | Phone: 410.697.9523

**Sandi Olek:** *Senior Policy Advisor – Department of Natural Resources*

Sandi Olek is a Senior Policy Advisor for the Maryland DNR, where she works on projects that connect green initiatives with community planning. Sandi focuses on regional planning and the conflict between community development and vital natural resources and coastal hazards. Her particular focus is equitable access to green space for children and families. She chairs statewide workgroups on Nature Play Spaces, Community Planning for Children in Nature in addition to the Equity Workgroup of the Greater Baltimore Wilderness Coalition.

<http://dnr.maryland.gov> | Email: [sandra.olek@maryland.gov](mailto:sandra.olek@maryland.gov) | Phone: 410.260.8979

**Jeffrey Popp:** *Senior Program Officer – Chesapeake Bay Trust*

Jeffrey joined the Chesapeake Bay Trust in 2016 and leads grant programs that benefit water quality, wildlife habitat, and improve communities. Jeff has over 15 years of experience and specializes in native plants, reptiles and amphibians, and habitat restoration. He has served on Governor appointed task forces relating to reptile, amphibian, pollinators, habitat conservation, and remains active in natural resource issues. Prior to the Trust, Jeff was the Manager of Conservation Projects with the Wildlife Habitat Council. Jeff enjoys helping landowners navigate and overcome the challenges of managing and enhancing their land to benefit wildlife, water quality, and surrounding communities.

[www.cbtrust.org](http://www.cbtrust.org) | Email: [jpopp@cbtrust.org](mailto:jpopp@cbtrust.org) | Phone: 410.974.2941 ext. 103

**Stacy Schaefer:** *Associate Director Land Conservation - Department of Natural Resources, Land Acquisition & Planning*

Stacy Schaefer is the Associate Director of the Land Conservation group with the Maryland Department of Natural Resources. She oversees the DNR team responsible for the administration of three purchase land conservation programs: The Rural Legacy Program, the CREP Permanent Easement Program, and Program Open Space State-Side. Stacy has been conserving land with DNR since 2006. She earned her Juris Doctorate degree at the George Washington University Law School in 1991 and practiced corporate law in Washington, D.C. for over a decade before coming to DNR. She resides in Harwood, Maryland with her husband and nine year old son on a small farm they share with their horses and chickens.

<http://dnr.maryland.gov> | Email: [stacy.schaefer@maryland.gov](mailto:stacy.schaefer@maryland.gov) | Phone: 410.260.8431

**Colin Stief:** *Senior Application Designer – Chesapeake Conservancy*

Colin designs desktop and web applications that enable non-technical users to use complex GIS analyses. He also works to develop new methodologies for creating high-resolution datasets and other geospatial products.

[chesapeakeconservancy.org](http://chesapeakeconservancy.org) | Email: [cstief@chesapeakeconservancy.org](mailto:cstief@chesapeakeconservancy.org) | Phone: 443.261.2374

**Lori Scott: Chief Information Officer – NatureServe**

Lori Scott is the Chief Information Officer for NatureServe, a nonprofit organization that connects science with conservation. Lori leads a technology team that develops interactive web mapping applications that guide decision-making for enhanced conservation outcomes. Lori's portfolio includes visualization and decision-support tools like LandScope America, a conservation guide to America's natural places and tools to streamline and automate state environmental review and permitting.

[www.natureserve.org](http://www.natureserve.org) | Email: [lori\\_scott@natureserve.org](mailto:lori_scott@natureserve.org) | Phone: 703.908.1877

**Rachel Toker: President & CEO – Urban Ecosystem Restorations**

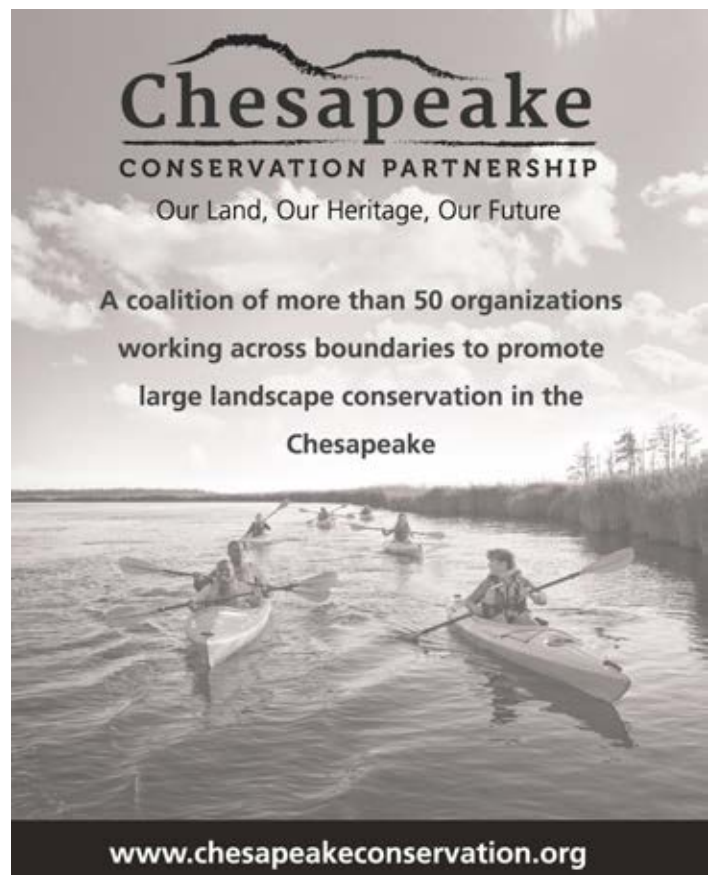
Rachel Toker is President of Urban Ecosystem Restorations, a land trust. Ms. Toker has over seventeen year of experience in real estate development, public-private partnerships, revitalizing underserved urban areas, and environmental sustainability initiatives. With a background in real estate law and urban policy, she has worked with private real estate developers, investors, governments, and non-profits to improve urban areas and strengthen communities. Ms. Toker is a LEED AP, serves on the board of Greater Spring Green Space, and has been certified as a stormwater BMP inspection and maintenance professional and a Montgomery County Weed Warrior (for invasive species removal).

[www.urbanecosystemrestorations.org](http://www.urbanecosystemrestorations.org) | Email: [rachel@urbanecosystemrestorations.org](mailto:rachel@urbanecosystemrestorations.org) | Phone: 202.494.8562

**Carol S. West: Executive Director - MD Agricultural Land Preservation Foundation, MD Department of Agriculture**

Carol S. West has worked for the State of Maryland for more than 38 years. She began working for the Maryland Agricultural Land Preservation Foundation (MALPF) in 1994, took a two year hiatus to work at the Department of Natural Resources with the Conservation Reserve Enhancement (CREP) and Rural Legacy Programs, and returned to MALPF in 2004 and was appointed Executive Director in 2012. MALPF has a staff of 7 and is directed by a 13 member Board of Trustees. The Program operates with an annual budget between \$10 million and \$90 million. Carol is a 2015 Class VIII graduate of LEAD Maryland.

<http://mda.maryland.gov/malpf> | Email: [carol.west@maryland.gov](mailto:carol.west@maryland.gov) | Phone: 410.841-5860





The Land Trust Alliance is proud to support Maryland land trusts!



The learning continues after the conference...

Online at <http://learningcenter.lta.org>

In person at Rally 2016, Oct. 28-30, Minneapolis, MN. [www.alliancerally.org](http://www.alliancerally.org)



\* The Learning Center is a service offered to Alliance member land trusts, partners and individual members at the \$250 level and above.

O'DONOGHUE & O'DONOGHUE LLP  
Attorneys at Law

is proud to support the

**Maryland Environmental Trust's**

**2017 Maryland Land Conservation Conference**

*Best wishes for a successful event!*



Washington, DC • Annapolis, MD • Philadelphia, PA

THE  
CONSERVATION FUND  
[conservationfund.org](http://conservationfund.org)

We make conservation work for America.  
Since 1985, we have protected land, water  
and wildlife while making communities more  
economically vibrant.

© Ivan Lattinica

Local Partner | National Land Trust | Conservation Lender



© Ivan Lattinica



Our success is grounded in partnerships.

We help local land trusts, agencies, landowners and communities acquire key properties and balance nature with commerce.

Your success is our goal.

Bill Crouch, Maryland State Director  
Conservation Acquisition  
[bcrouch@conservationfund.org](mailto:bcrouch@conservationfund.org)  
443-482-2826

Reggie Hall, Director  
Land Conservation Loans  
[rhall@conservationfund.org](mailto:rhall@conservationfund.org)  
703-717-3537

WCS

Wright, Constable & Skeen, LLP  
Attorneys at Law

Serving Families and Businesses for Over 100 Years

CONGRATULATIONS to MET for your  
2016 CONSERVATION EASEMENTS

• Estates & Trusts Planning and Administration • Business Planning •  
Real Estate • Corporate Litigation • Construction • Bankruptcy &  
Creditors' Rights • Family Law • Government Contracting • Healthcare •  
Insurance Defense & Coverage • Intellectual Property Litigation •  
Labor & Employment • Maritime & Transportation •  
Non-Profit Organizations • Surety & Fidelity

410-659-1300 | [www.weslaw.com](http://www.weslaw.com)  
410-659-1315 | James W. Constable

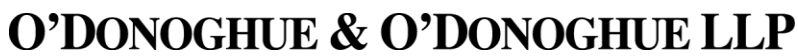
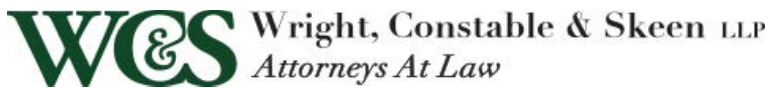
7 Saint Paul Street, 18<sup>th</sup> Floor | Baltimore, MD 21202

102 W. Pennsylvania Ave. | Suite 406 | Towson, MD 21204

Maryland's Super Lawyers® and Rising Stars®. Best Lawyers in America® and Best's Recommended Insurance Attorneys®. WCS holds the gold standard of law from ratings and is rated by Martindale-Hubbell as an AV Preeminent Status firm. AV is a testament to the fact that our lawyers peers rated them at the highest level of professional excellence.

*THANK YOU to our conference partners for their support!*

GOLD SPONSORS:



SILVER SPONSORS:



S. H. MULLER & ASSOCIATES, LLC

REAL ESTATE APPRAISERS & CONSULTANTS

GreenTrust Alliance, Inc.

AND SPECIAL THANKS TO:

