

Chesapeake Conservancy

EXPLORE. CONSERVE. INNOVATE.













Chesapeake

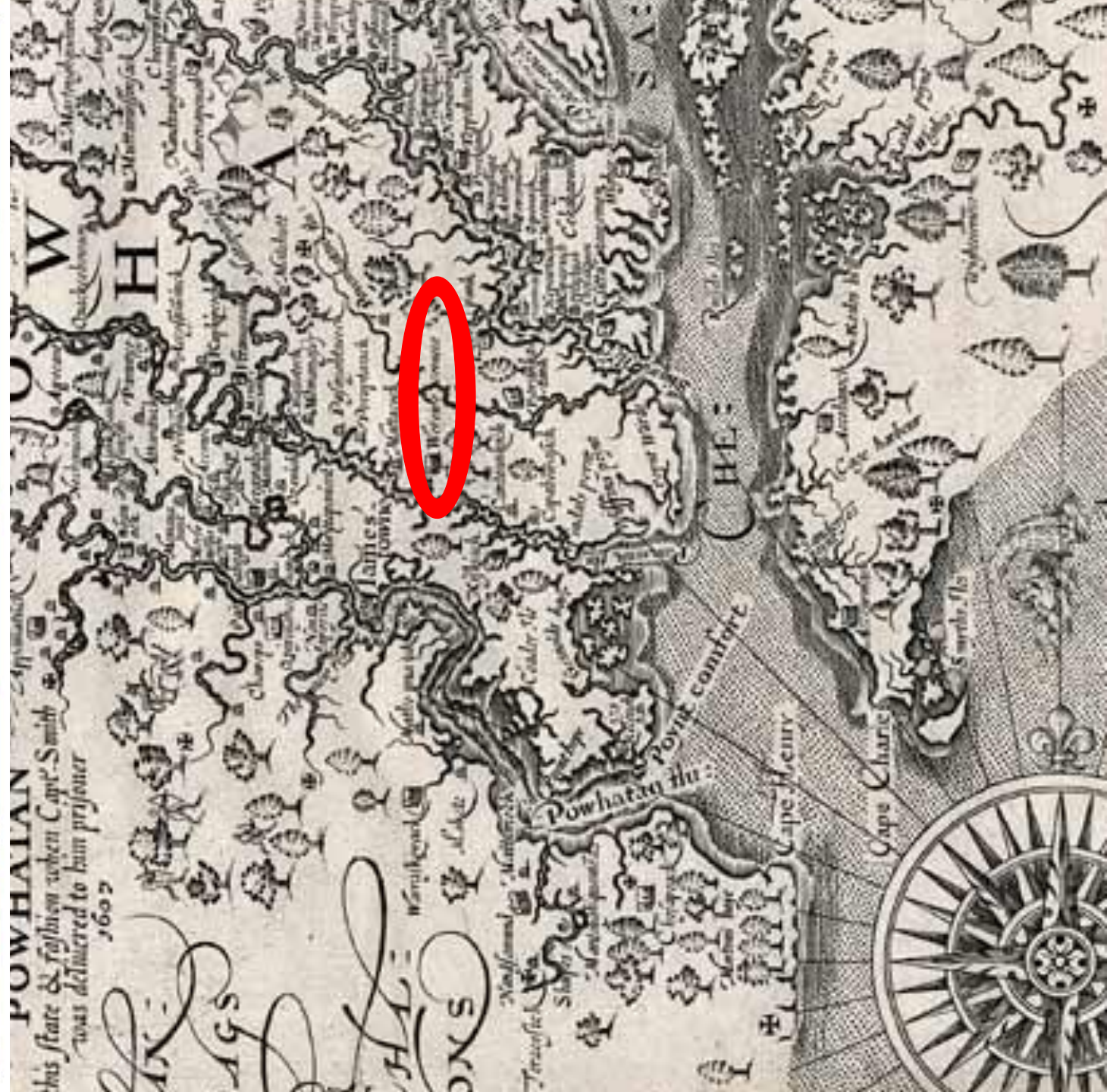
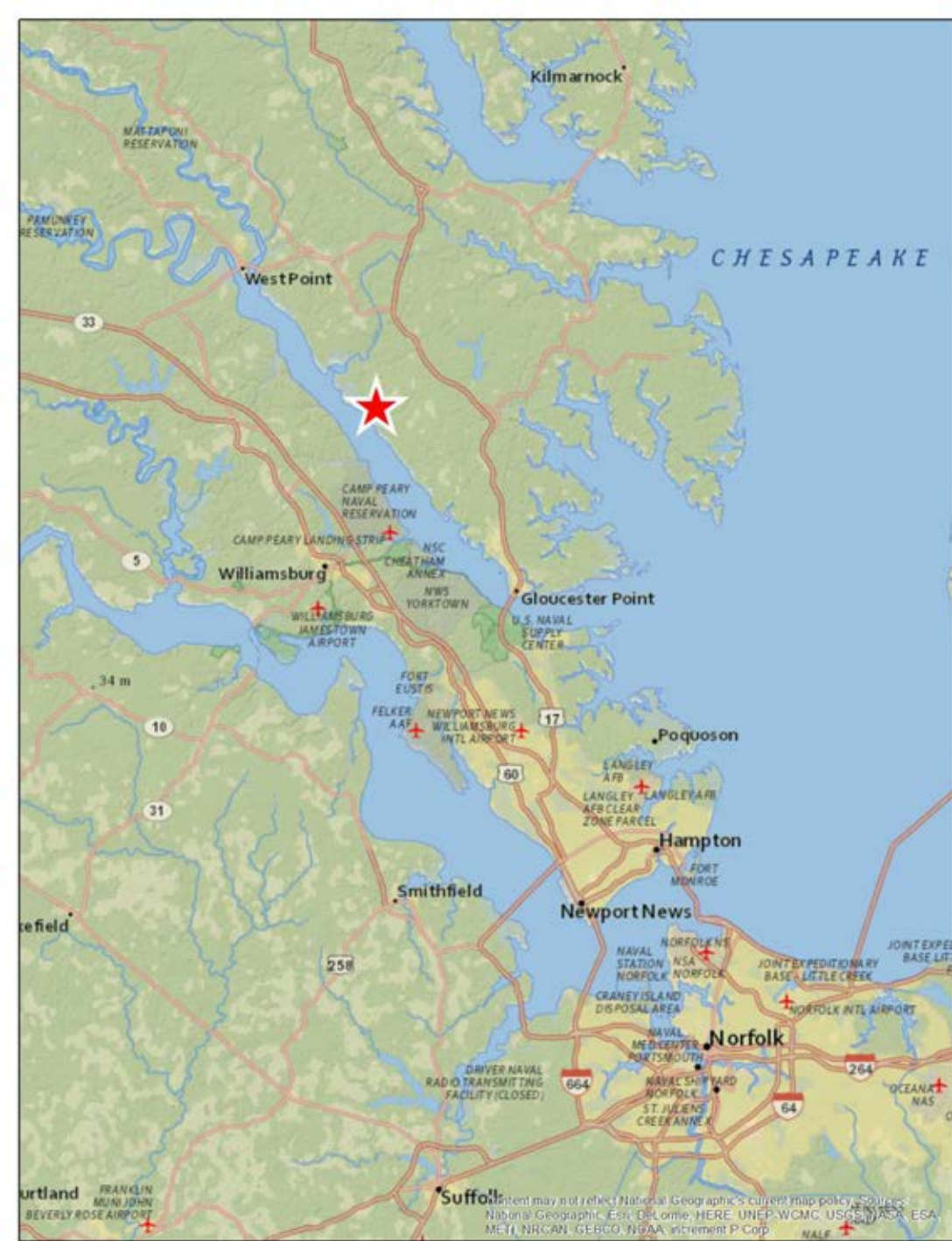
CONSERVATION PARTNERSHIP



Rivers of the Chesapeake LWCF Collaborative

- 5 governors
- 7 U.S. Senators
- 17 U.S. Representatives
- Maryland Senate President
- Maryland House Speaker
- Virginia House Speaker
- numerous American Indian Tribes and Nations
- more than 40 nonprofits









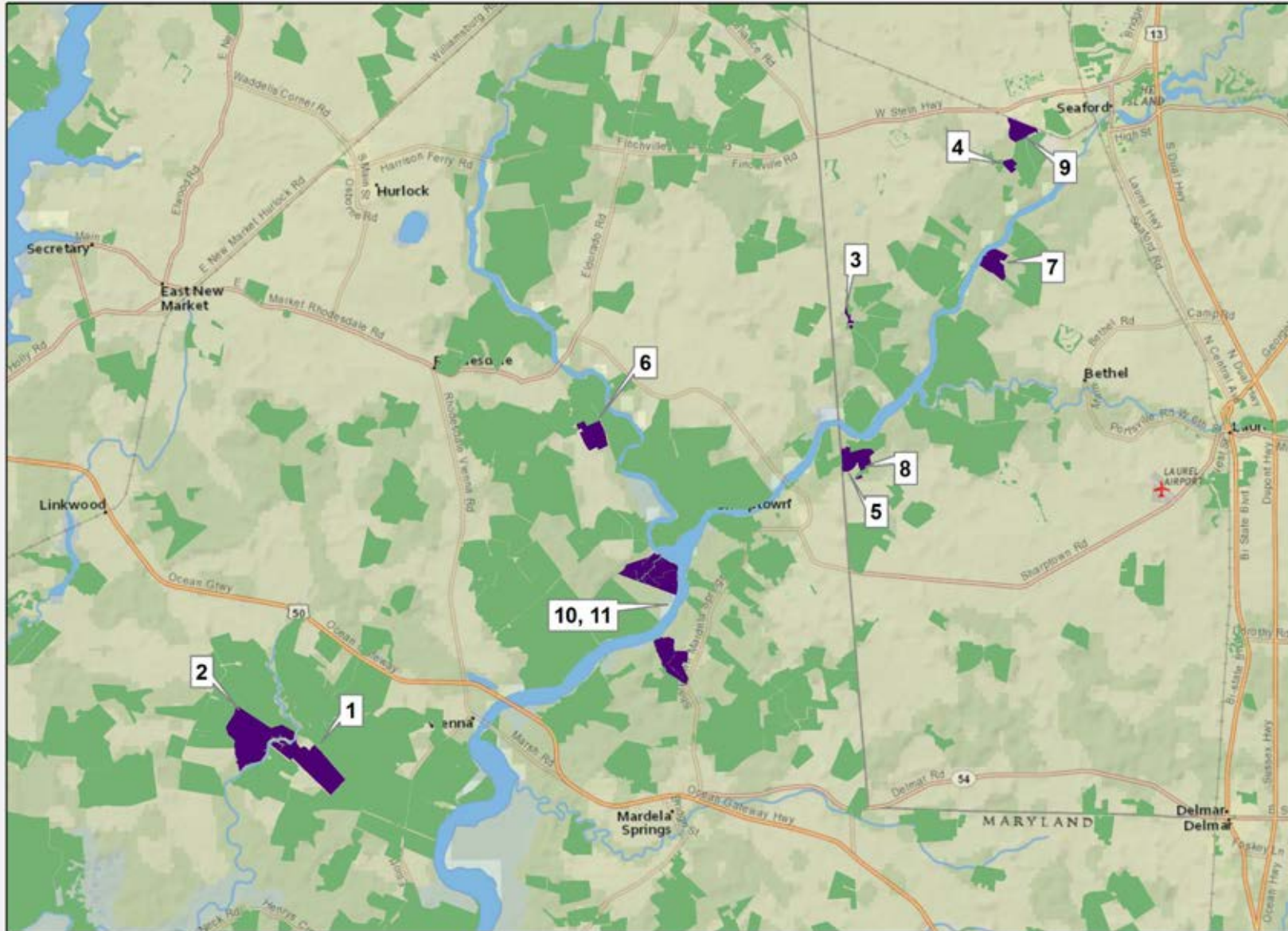




Chesapeake Conservation
Landscaping Co



Nanticoke River Corridor Protected Properties





How Can I Help?

Learn more about what's happening at the statehouse.

[Take Action Now!](#)



Stop the Cuts!

Let your elected officials know that Program Open Space matters to you.

[Learn more](#)



Program Open Space at Work Near You

Find places near you that would not have been possible without funding from Program Open Space.

[Learn more](#)



It's more than just another pretty place

Program Open Space funds programs in all of Maryland's 23 Counties and the City of Baltimore.

[Learn more](#)

Lands of the Roman Catholic Clergymen



3 - Cedar Point



2 - New Towne Neck

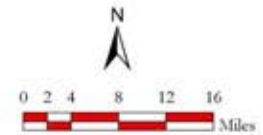


4 - Old Bohemia



1 - St. Inigoes

- Federal Lands
- Municipalities
- Lands of the Roman Catholic Clergymen
 - 1 - St. Inigoes
 - 2 - New Towne Neck
 - 3 - Cedar Point
 - 4 - Old Bohemia



A man with short brown hair, wearing a blue checkered shirt and a dark jacket, is smiling and giving a thumbs up. He is standing outdoors in front of a sign. The background consists of bare trees and a clear blue sky. The sign is black with white text and is mounted on a white post. The text on the sign reads: "Quiet Waters Park", "was acquired with the assistance of", "Program Open Space", and "Maryland Dept. of Natural Resources".

Quiet Waters Park
was acquired with the assistance of
Program Open Space
Maryland Dept. of Natural Resources

**POSTED
NO TRESPASSING
KEEP OUT**

WIND PRODUCTS CO., NORTHFIELD, OHIO 44067-3415 Made in the U.S.A.

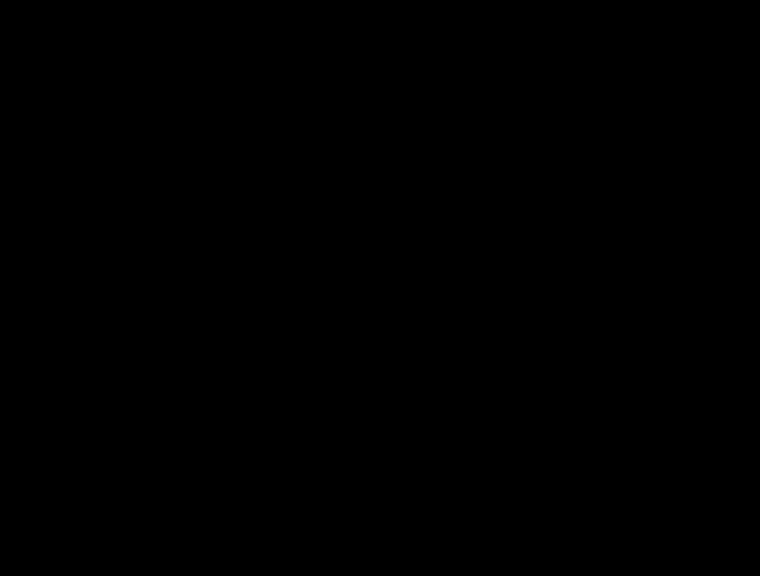
813

W04-1288





PICK-UP
AND
DROP-OFF
ONLY
NO PARKING
← →





Find Your

CHESAPEAKE



LEARN MORE



Land Lines

QUARTERLY MAGAZINE OF THE LINCOLN INSTITUTE OF LAND POLICY

OCTOBER 2016

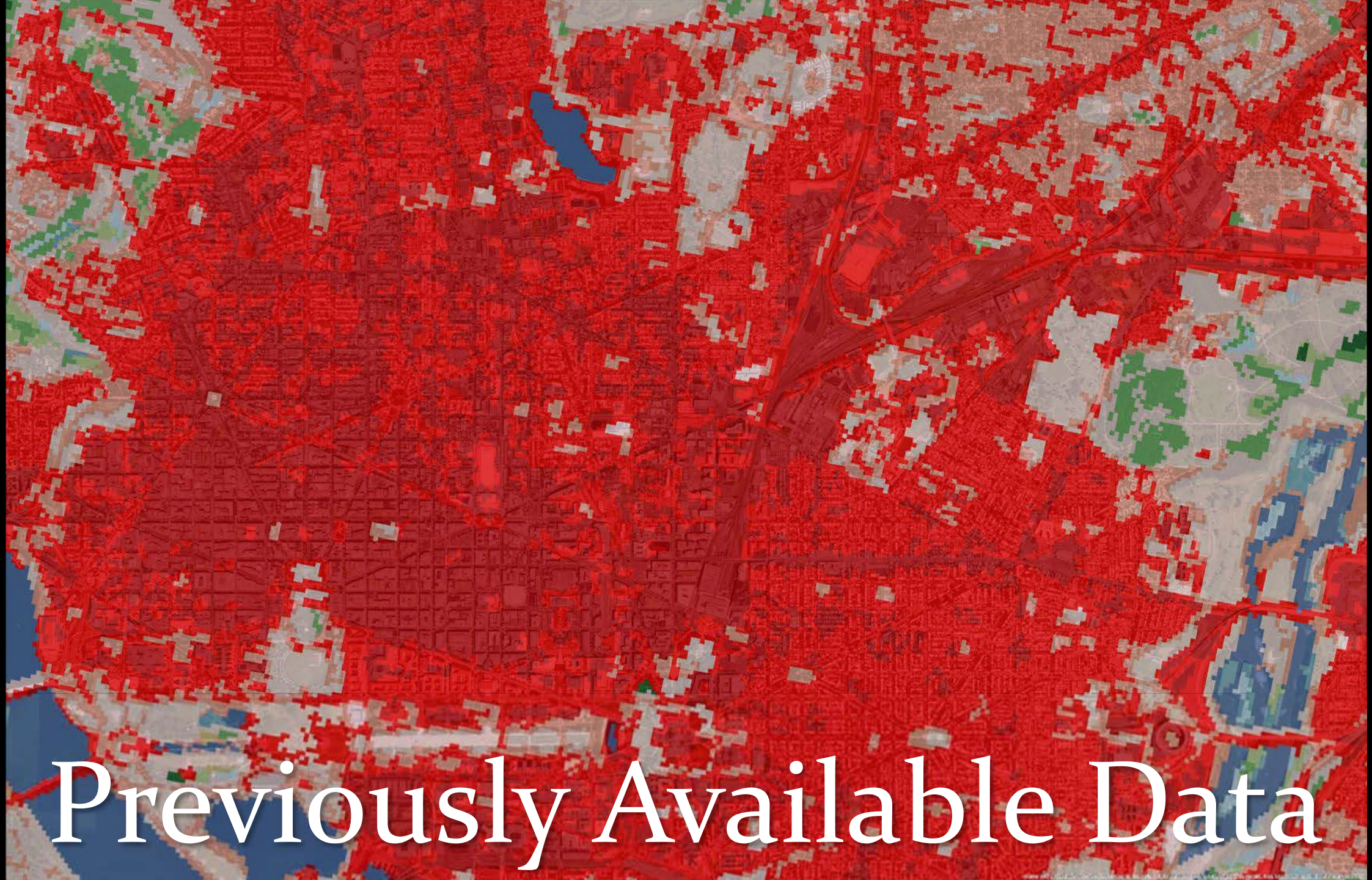
Mapping the Future

Precision Conservation with
One-Meter-Resolution Land Cover GIS

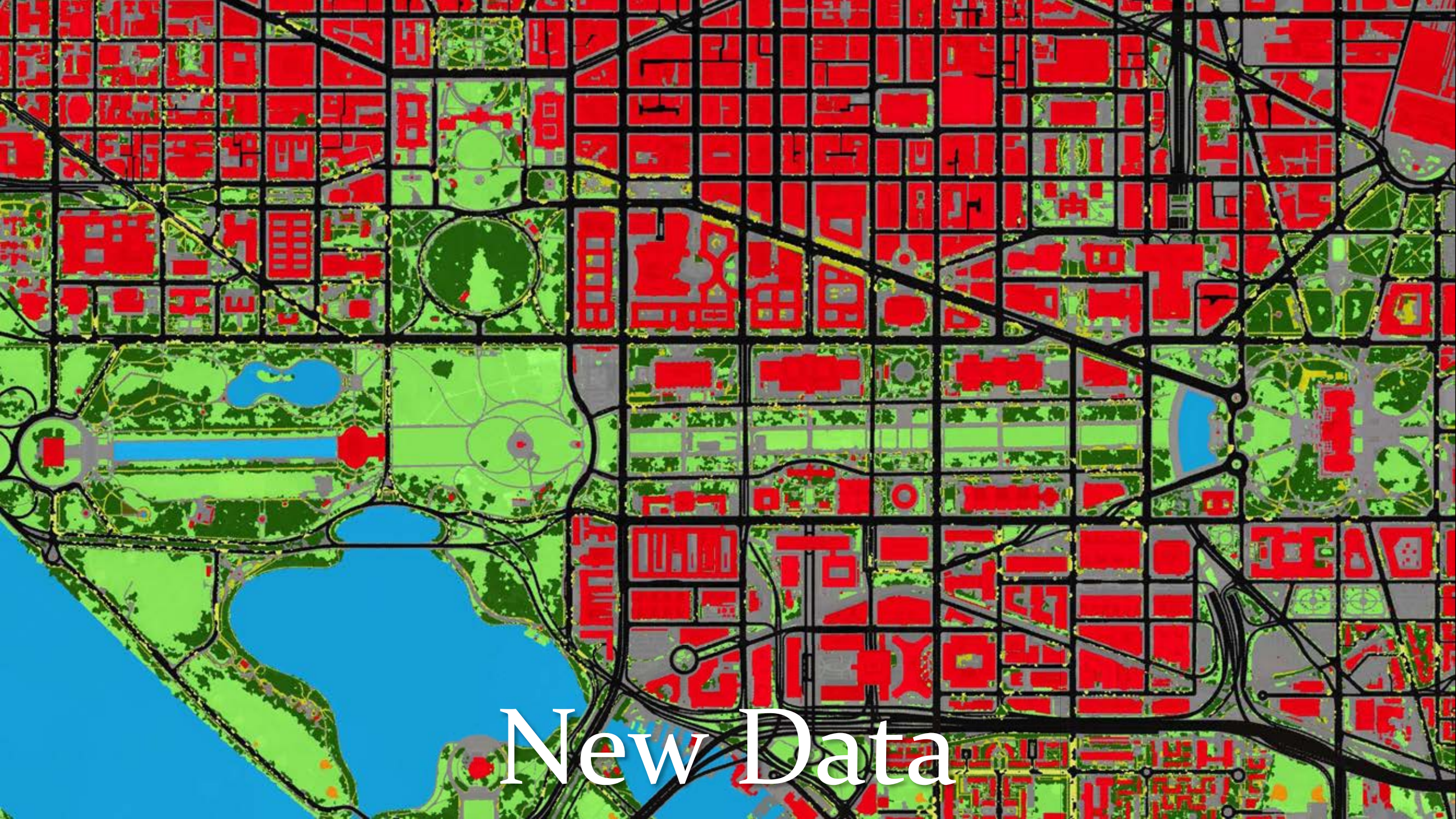
2016 Atlas of Urban Expansion

The New Urban Agenda

WPA 2.0



Previously Available Data



New Data





