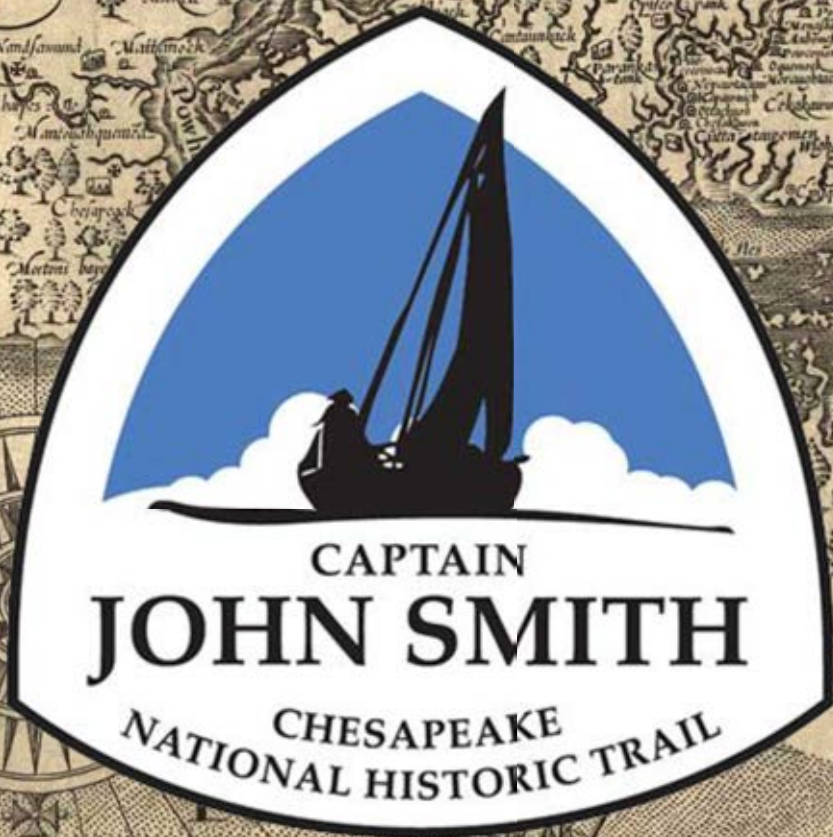


# New Data and Tools for Land Stewardship and Management

Cassandra Pallai  
Geospatial Project Manager

Colin Stief  
Solutions Engineer



Est. December 19, 2006

Approx. 3,000 miles

Primary partner with  
National Park Service



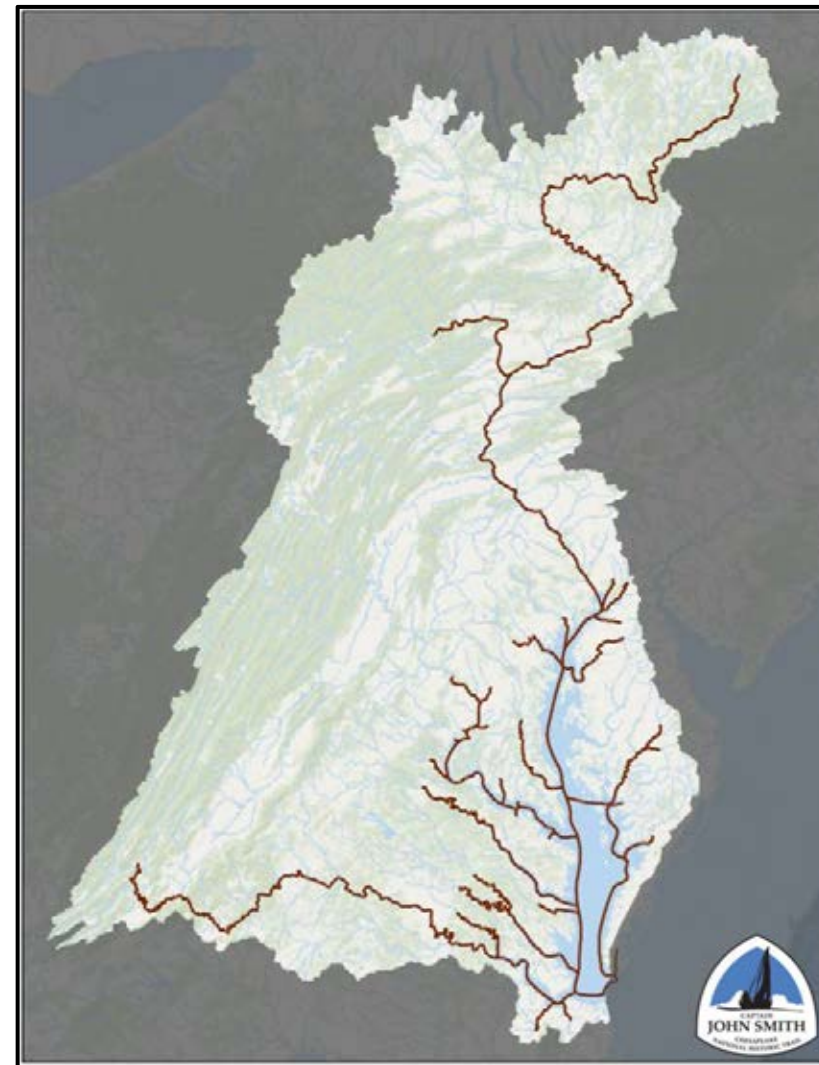
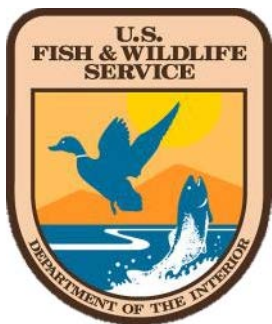
Connect

Innovation

Conserve

Restore

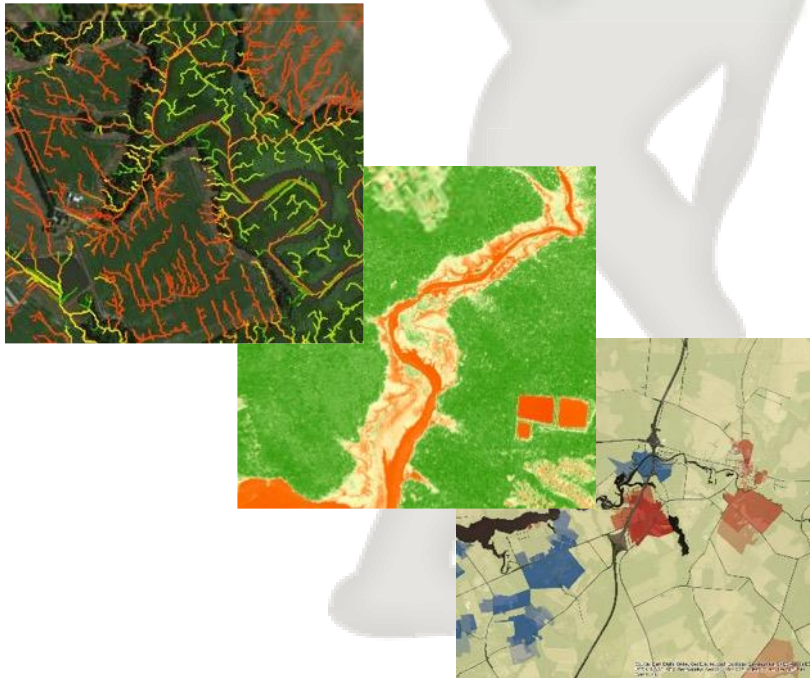
GRAND OPENING



## ***Big Data***

Novel datasets

Higher resolution information



## ***Enabling Partners***

Data access

Interactive web-based tools



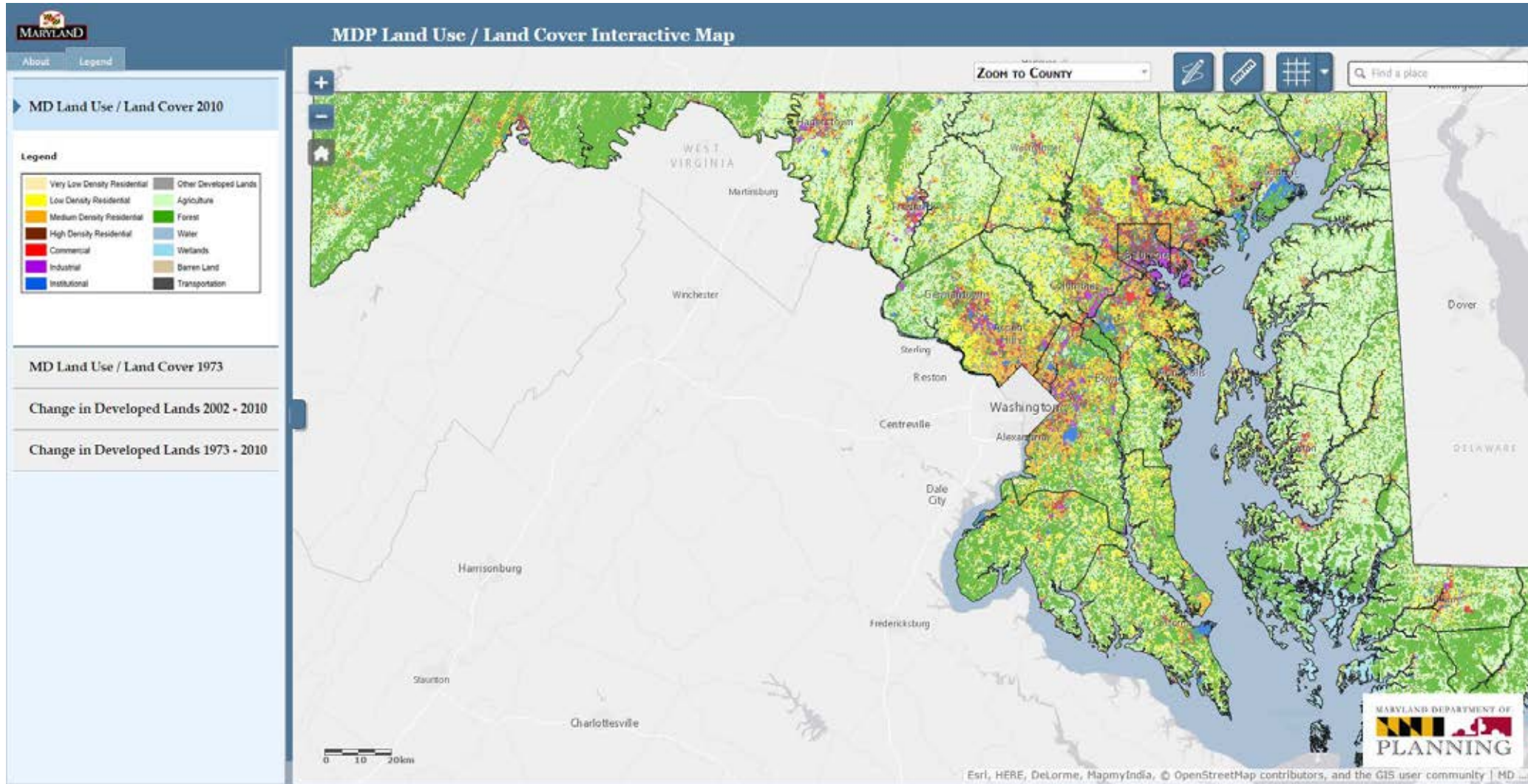


# Precision Conservation

*Improving Our Understanding of the  
Landscape through Data*

*Saving the Chesapeake's Great Rivers and Special Places*

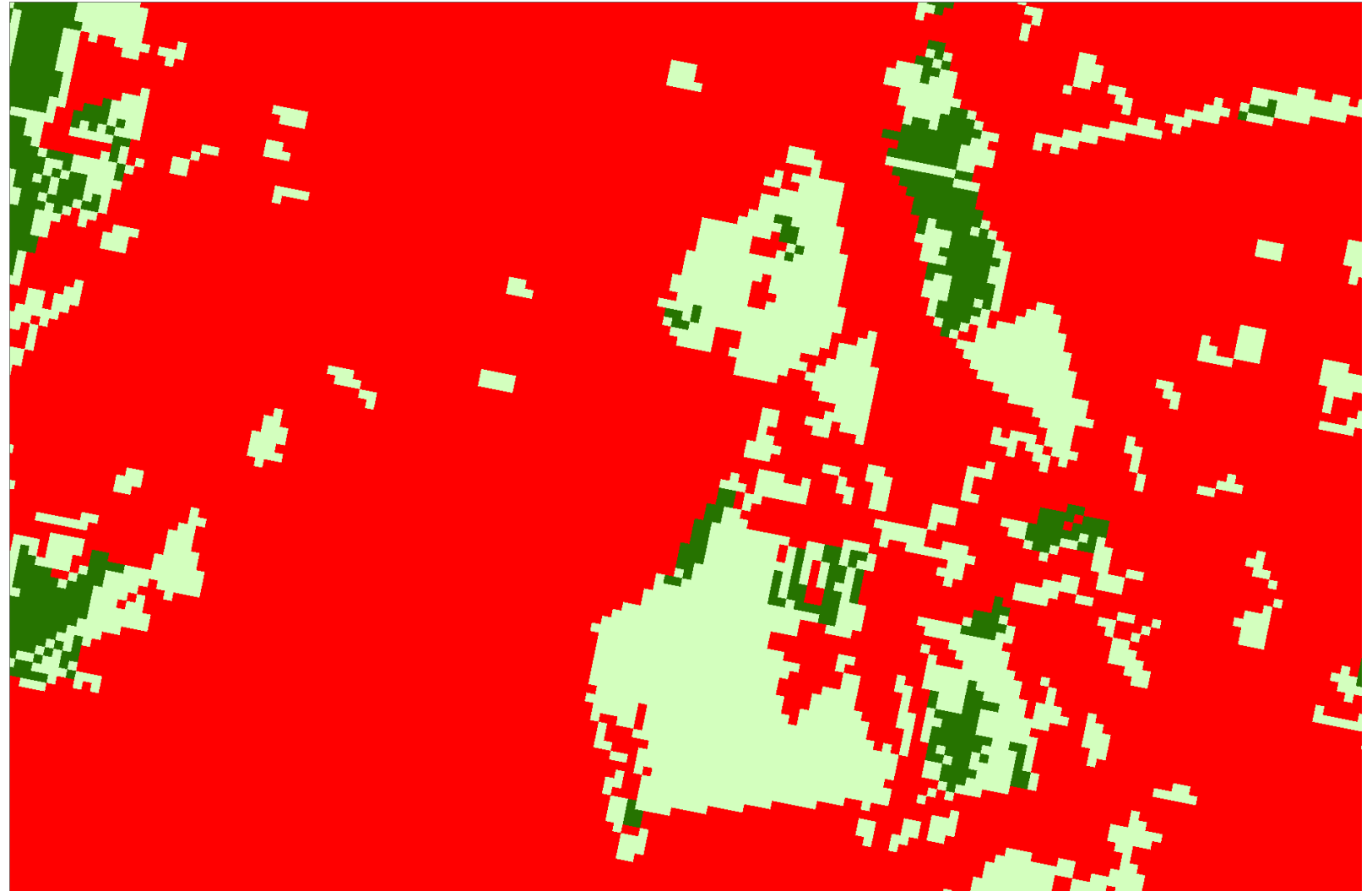
# Land Cover Transformation



# Land Cover Transformation

*Washington DC,  
Catholic University*

## NLCD Land Cover Classification



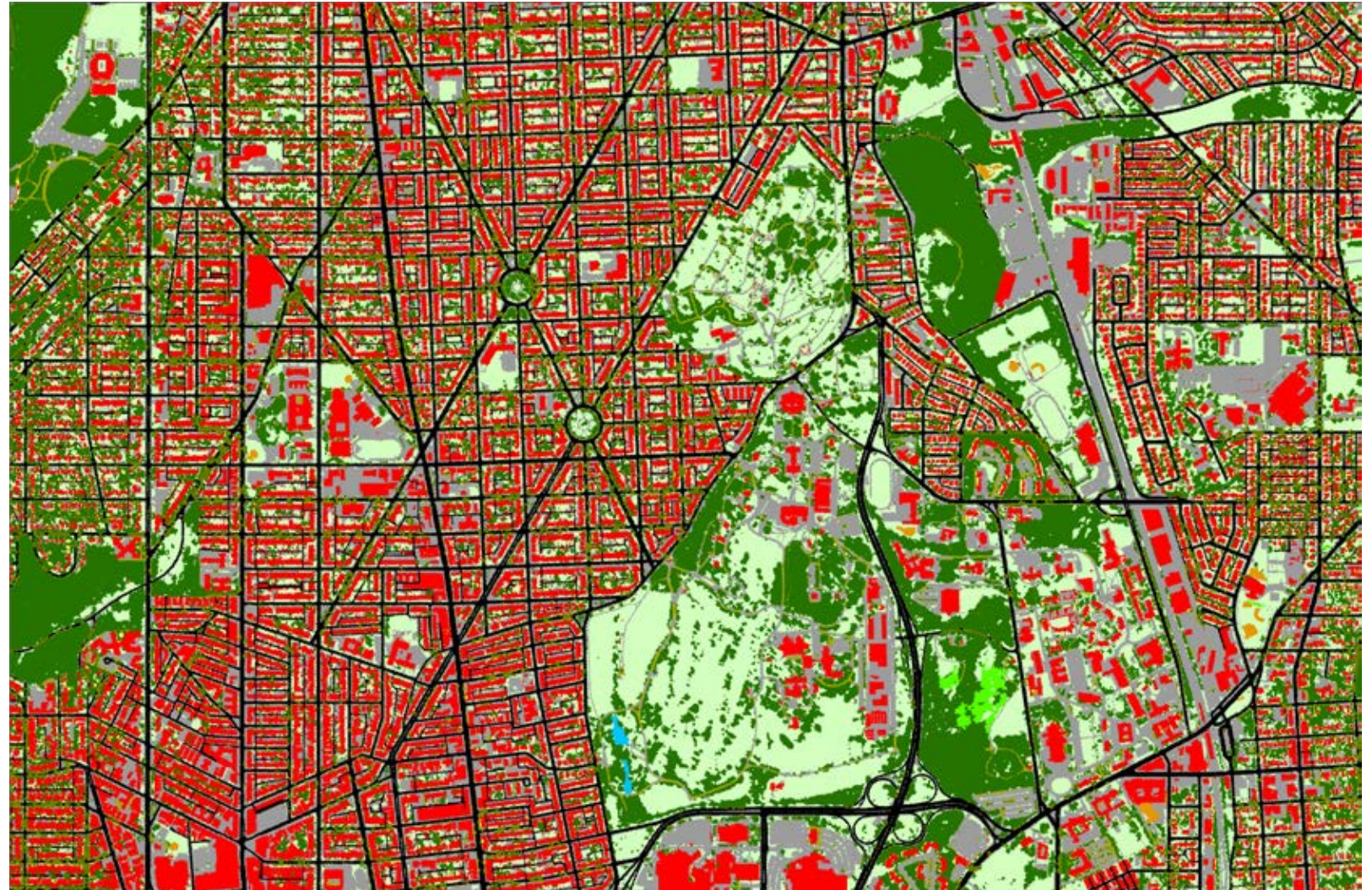


# Land Cover Transformation

*Washington DC,  
Catholic University*

## CBP Land Cover Classification

- Barren
- Impervious Roads
- Impervious Surfaces
- Low Vegetation
- Shrubland
- Structures
- Tree Canopy
- Tree Canopy over Impervious Roads
- Tree Canopy over Impervious Surfaces
- Tree Canopy over Structures
- Water
- Wetlands



# Land Cover Quantifying Conservation



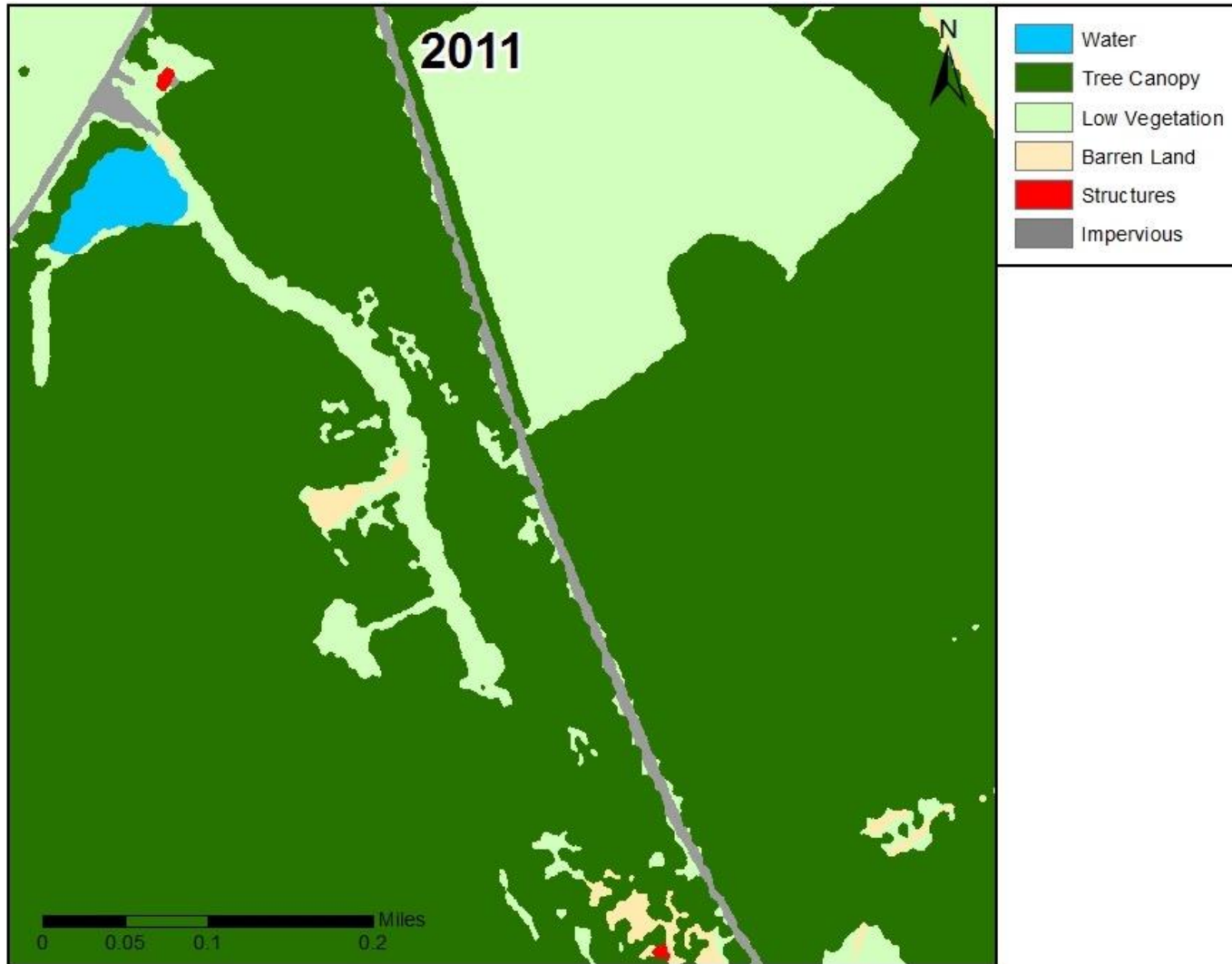
Land Cover	Area (acres)
Water	?
Tree Canopy	
Low Vegetation	
Barren Land	
Structures	
Impervious	

# Land Cover Quantifying Conservation



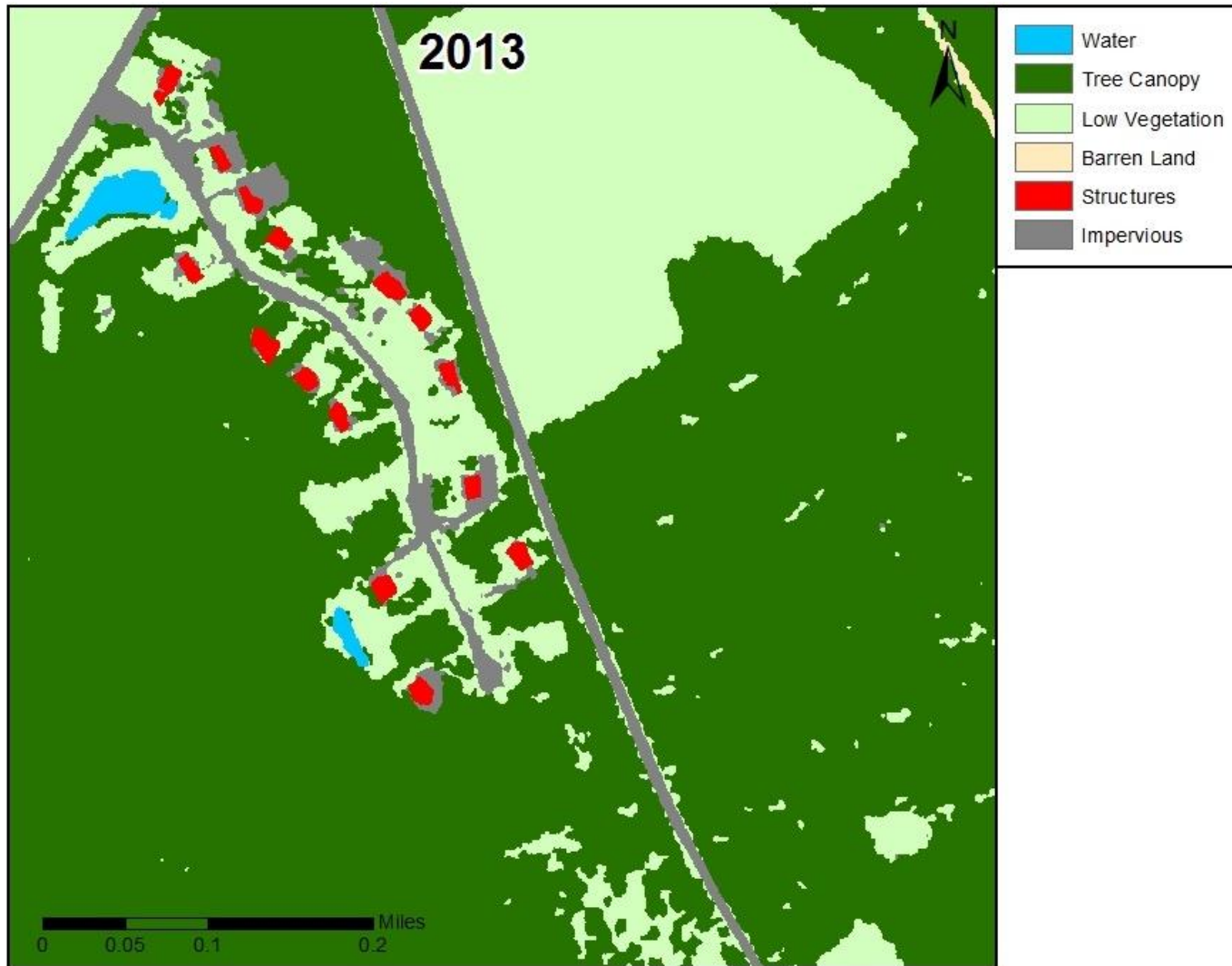
Land Cover	Area (acres)
Water	?
Tree Canopy	
Low Vegetation	
Barren Land	
Structures	
Impervious	

# Land Cover Quantifying Conservation



Land Cover	Area (acres)
Water	1.9
Tree Canopy	179.3
Low Vegetation	48.2
Barren Land	2.1
Structures	0.2
Impervious	3.4

# Land Cover Quantifying Conservation



Land Cover	Area (acres)
Water	1.1
Tree Canopy	167.4
Low Vegetation	56.7
Barren Land	0.3
Structures	1.6
Impervious	8.8

**Forest loss: 11.9 acres**

# Land Cover Prioritizing Conservation



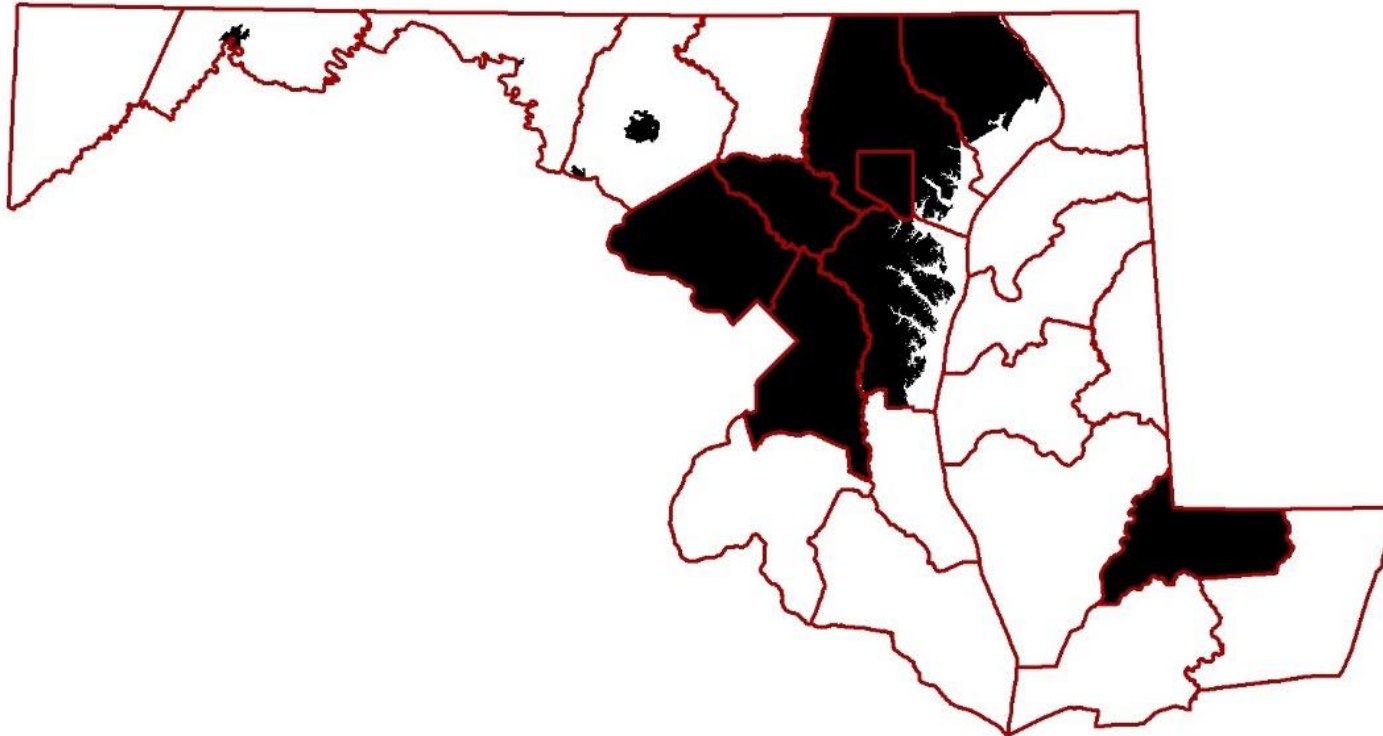
*Saving the Chesapeake's Great Rivers and Special Places*

# Land Cover Prioritizing Conservation



*Saving the Chesapeake's Great Rivers and Special Places*

# Land Cover High-Res Existing Data



## 2007

Anne Arundel Co.  
Baltimore City  
Baltimore Co.  
Bowie  
Brunswick  
Cumberland  
Edmonston  
Frederick  
Greenbelt  
Howard Co.  
Rockville  
Williamsport

## 2009

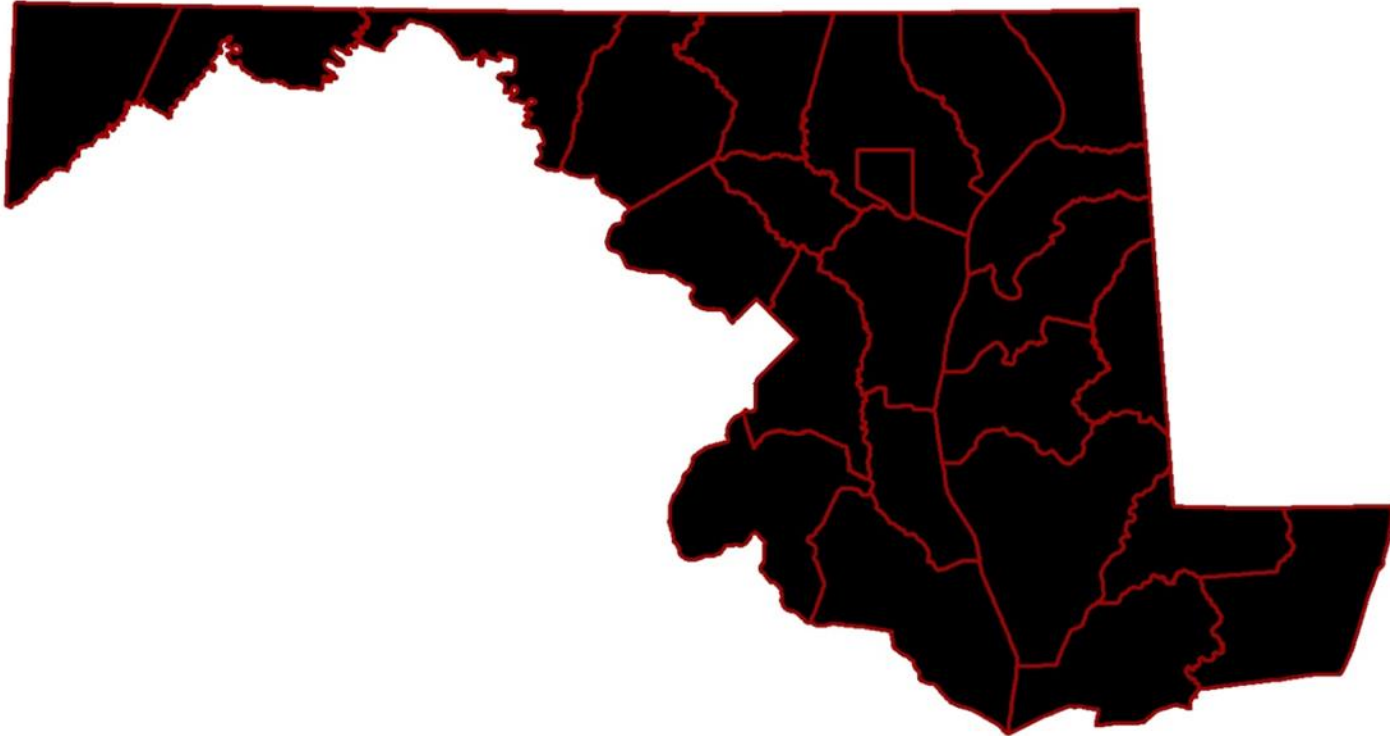
Forest Heights  
Montgomery Co.  
Prince Georges Co.  
Takoma Park

## 2011

Harford Co.  
Wicomico Co.

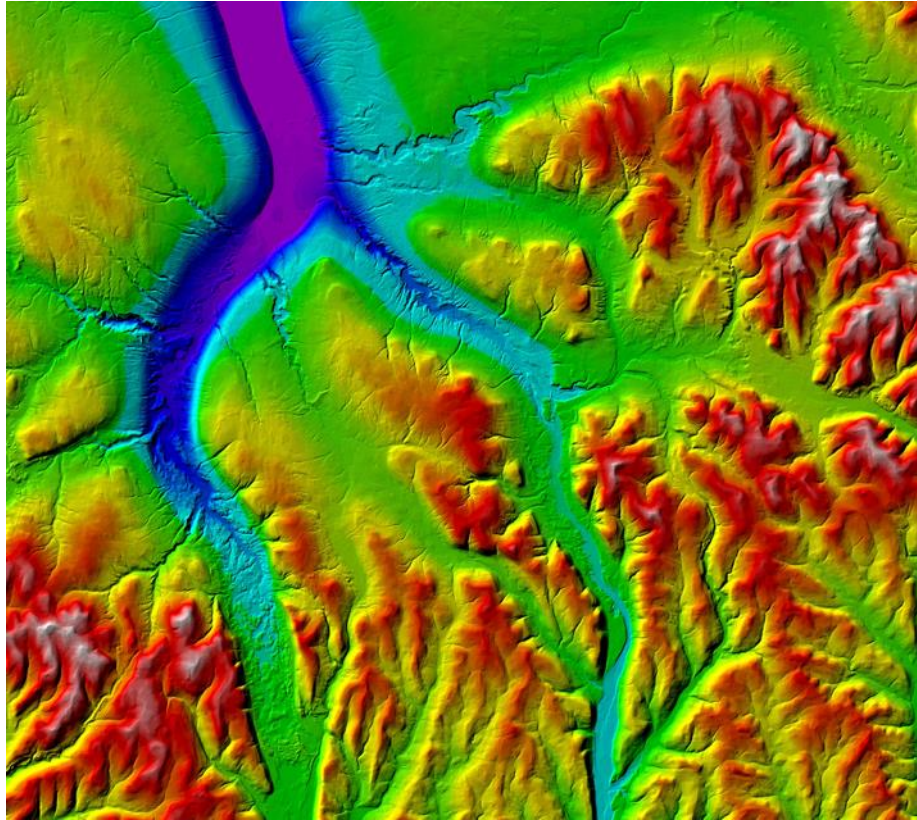


# Land Cover High-Res Up Next



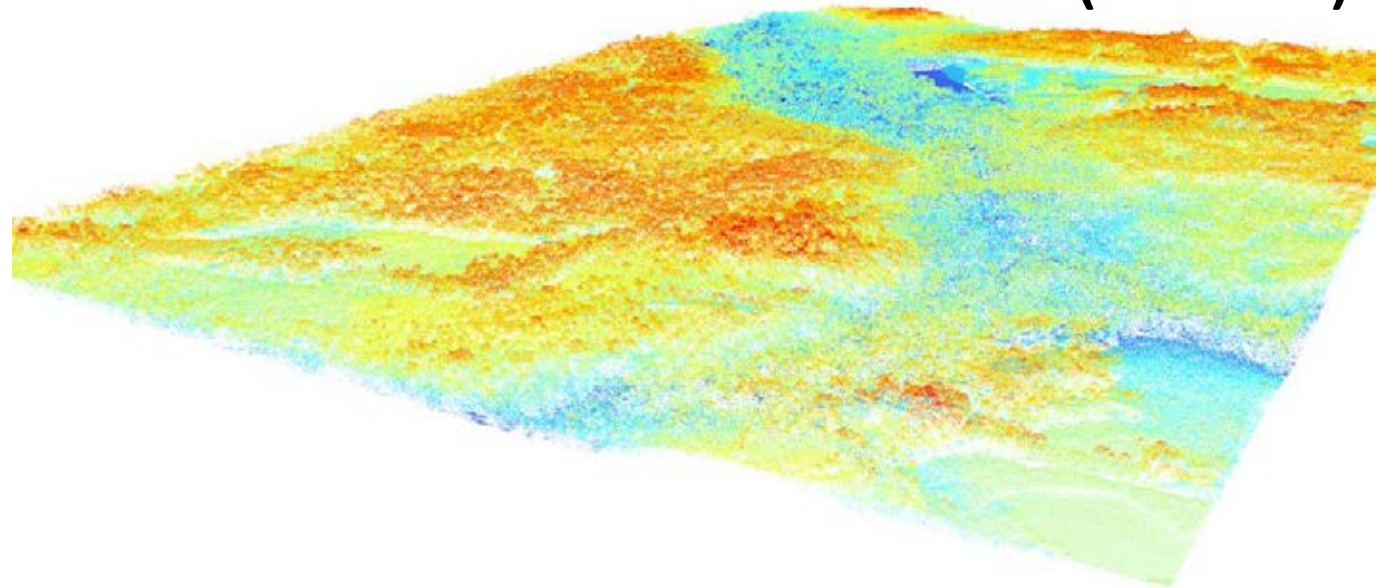
**2013**

Statewide Coverage

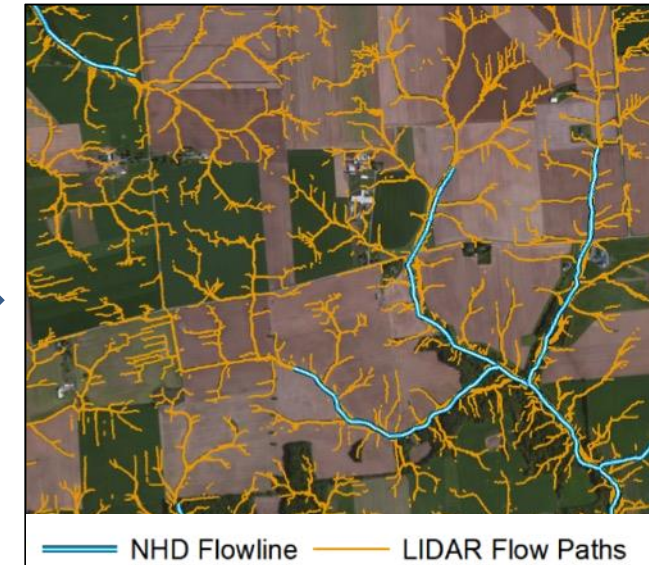
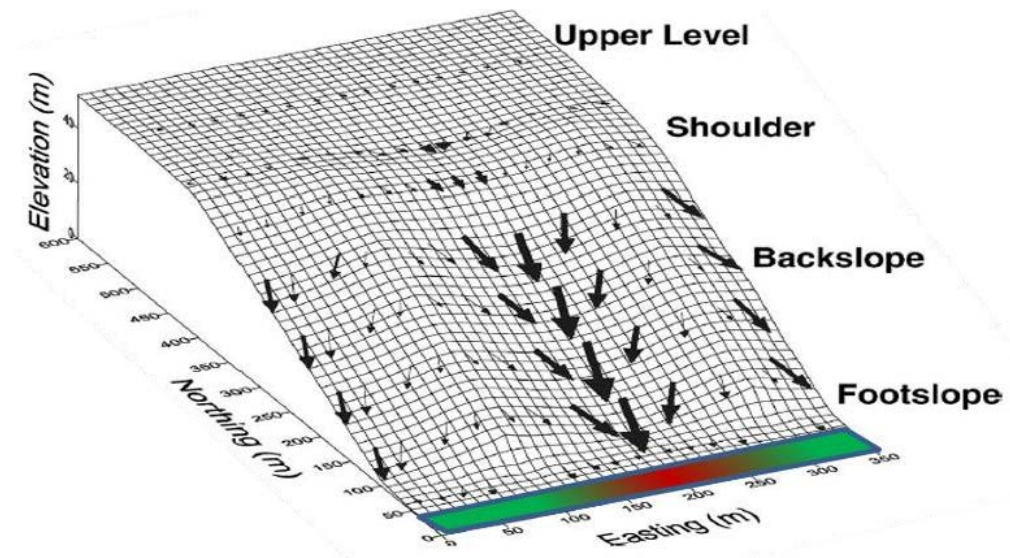
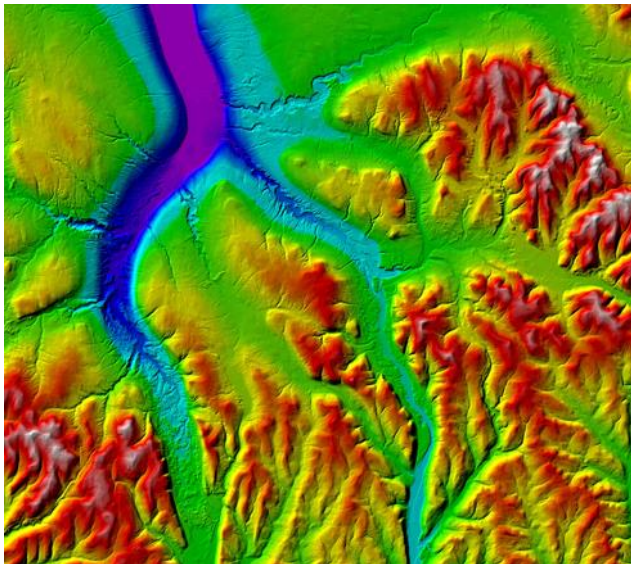


Digital Elevation Model  
(DEM)

Light Detection And Ranging  
(LiDAR)



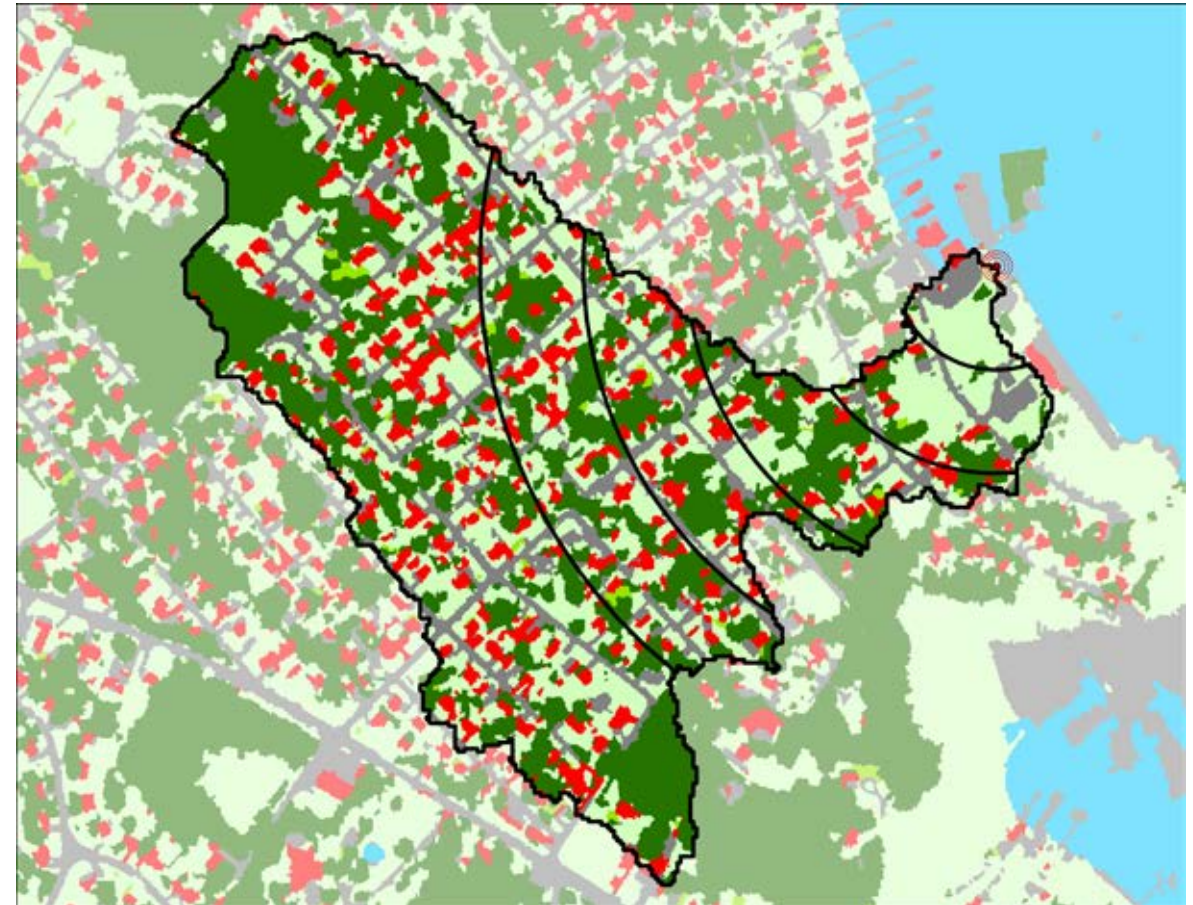
# Terrain Data Derivatives



# Terrain Data Novel Prioritization



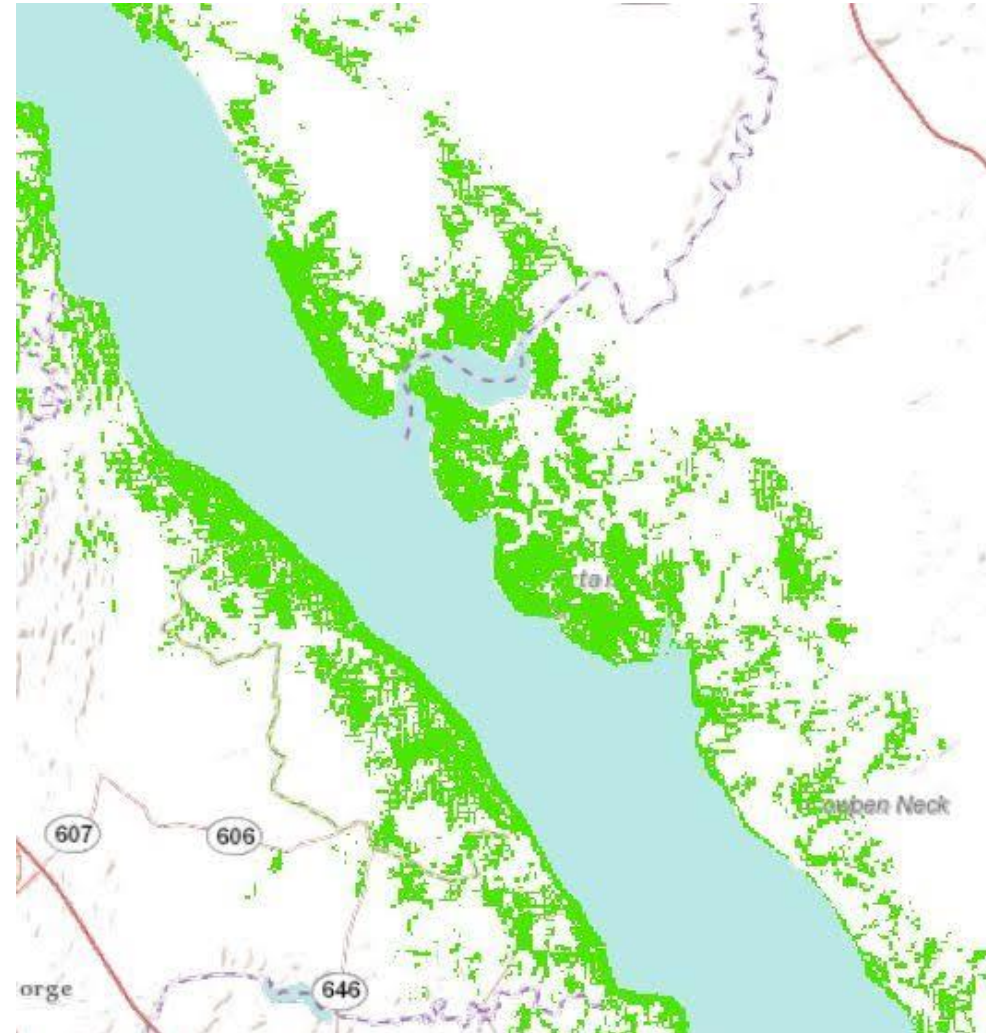
**by watershed...**



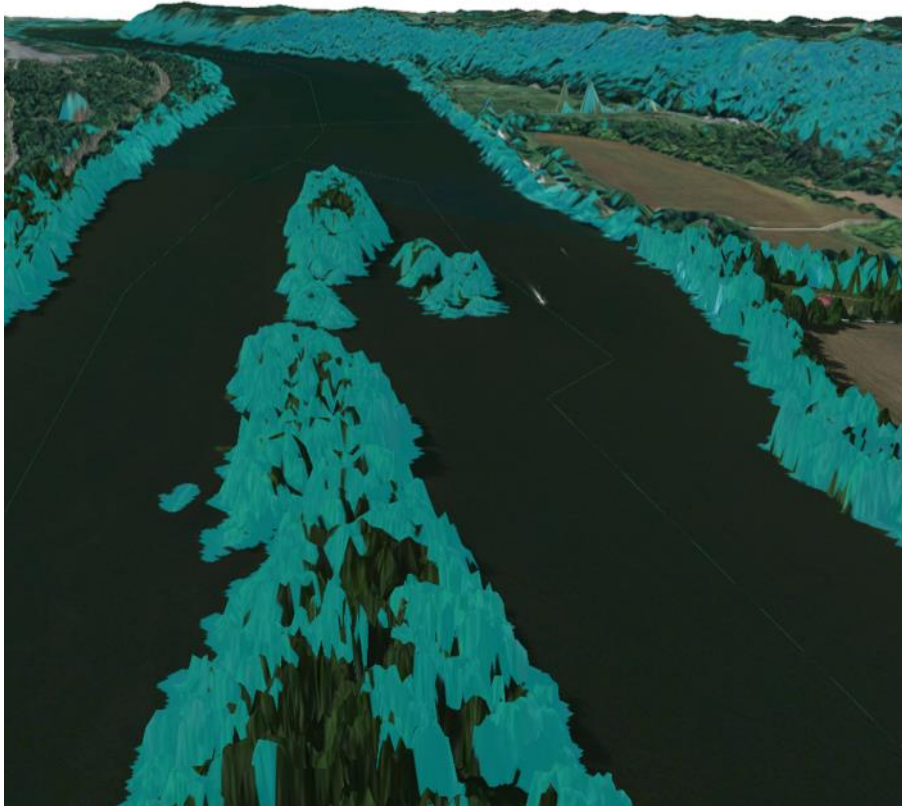
# Terrain Data Novel Prioritization



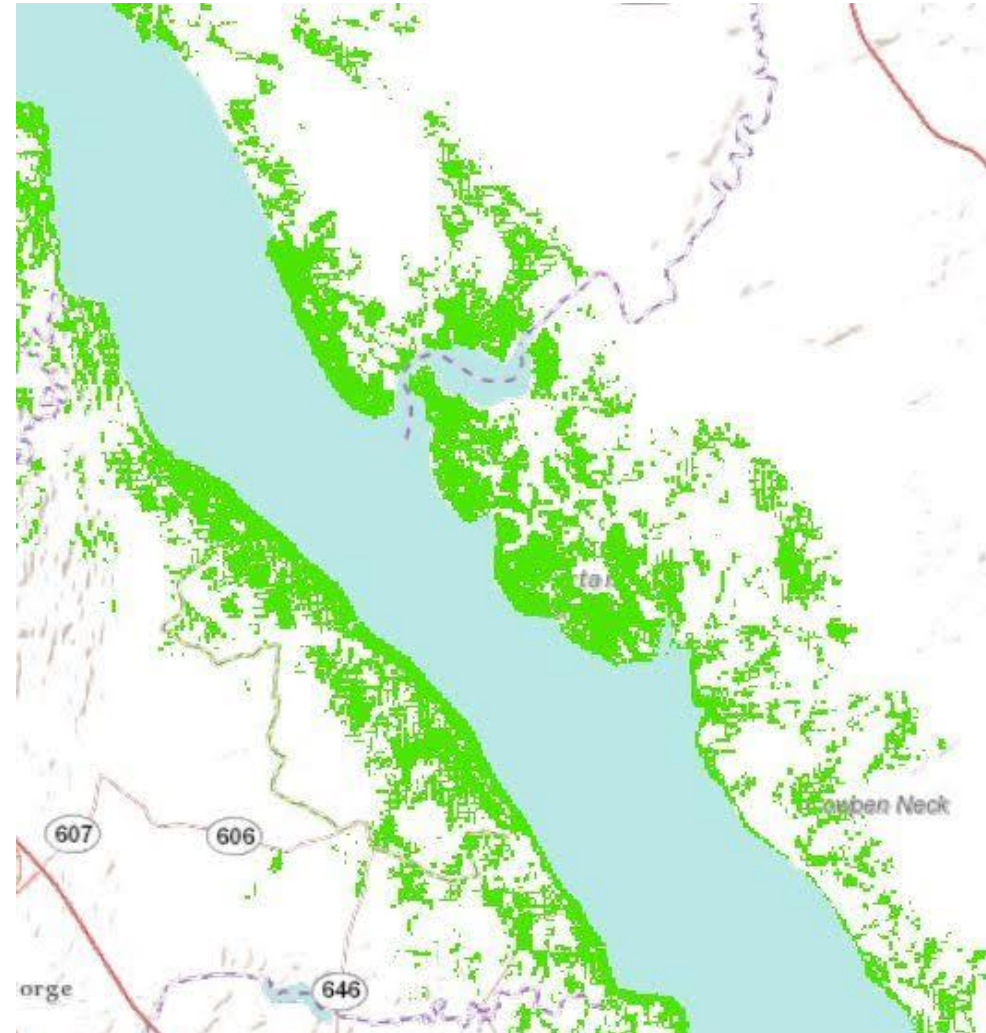
and by “Viewshed”



# Terrain Data Novel Prioritization



and by “Viewshed”



# Terrain Data Existing Info

The screenshot displays the USGS 3DEP View (V1.0) interface. At the top, the USGS logo and 'The National Map' branding are visible. The main navigation bar includes '3DEP View (V1.0)', 'How to', 'Start Over', 'Custom Views', 'Share Link', and 'Contact Us'. The left sidebar contains 'Datasets' and 'Advanced Search Options' with a 'Find Products' button. Under 'Data', 'Elevation Products (3DEP)' is selected. The 'Product Search Filter' lists various DEM categories, with '1/3 arc-second DEM' checked. A 'Description' preview window shows a 3D terrain view. The main map area shows a topographic map of the Chesapeake region, including Maryland and Delaware, with labels for cities like Hagerstown, Westminster, Bel Air, Elldon, Martinsburg, Frederick, Baltimore, Annapolis, Easton, Front Royal, Fairfax, Manassas, Leesburg, and Rockville. The map includes a search bar, map controls, and a scale bar. The bottom footer contains links for 'Accessibility', 'FOIA', 'Privacy', and 'Policies and Notices'.

Salisbury  
UNIVERSITY

**Dispersed data**

**Infrastructure requirements**

Software

Powerful computers

Storage capacity

**Specialized training**

**Staff time**







# Precision Conservation

*Providing Data & Analysis Access to  
Local Partners*



## Data

Web services

Curating



## Web-based tools

Access

Outputs



## **CONSERVATION TOOLBOX**



## CONSERVATION TOOLBOX



[www.chesapeakeconservancy.org/apps/ConservationToolbox](http://www.chesapeakeconservancy.org/apps/ConservationToolbox)

- Map Layers
- Search
- Filter
- Land Cover
- Report Generator
- Watershed Delineation

## Data Services

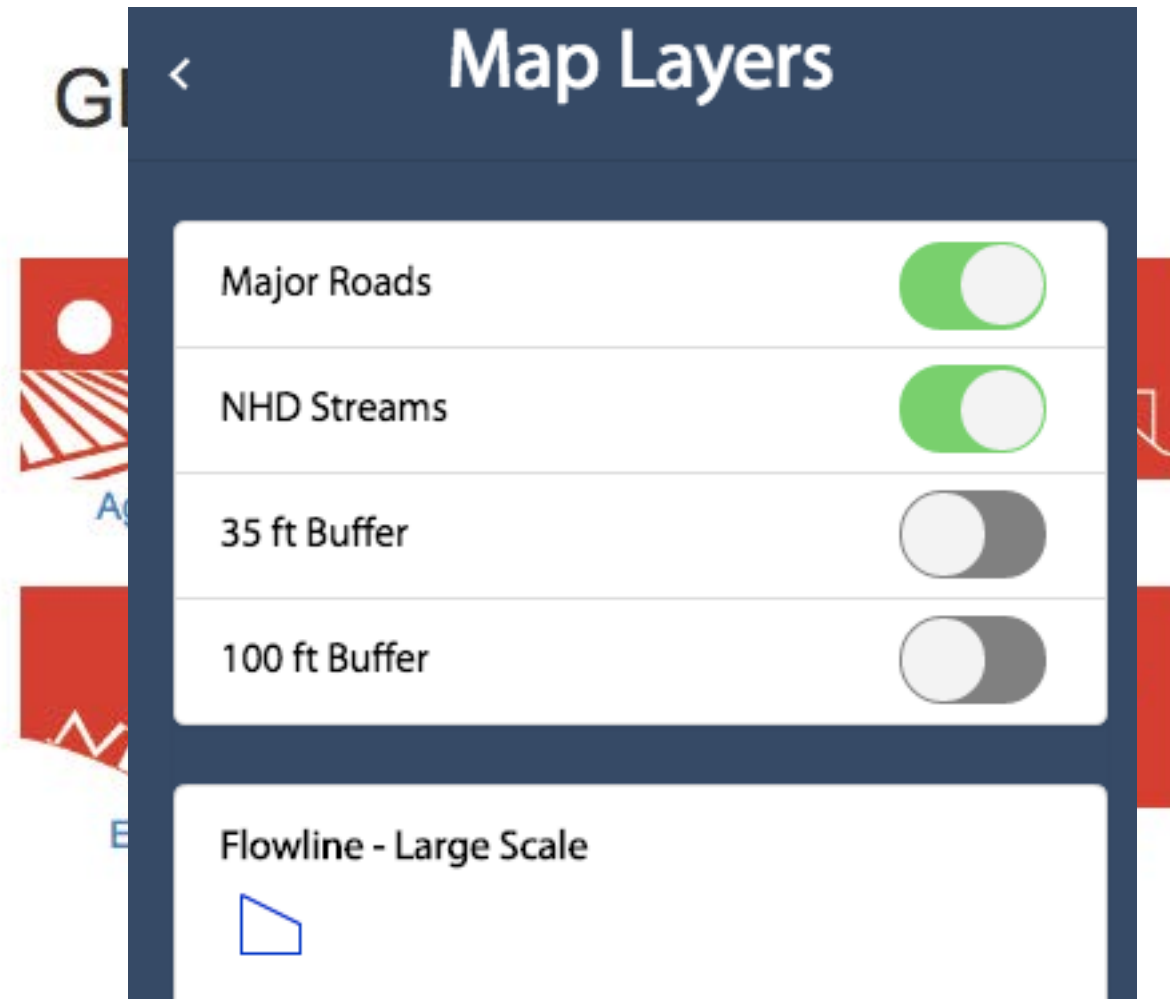
Maintained data links

MD iMap

## Map Overlays

Data comparison

Interoperability



# Map Layers

Major Roads



NHD Streams



35 ft Buffer



100 ft Buffer



Flowline - Large Scale



Roads

States



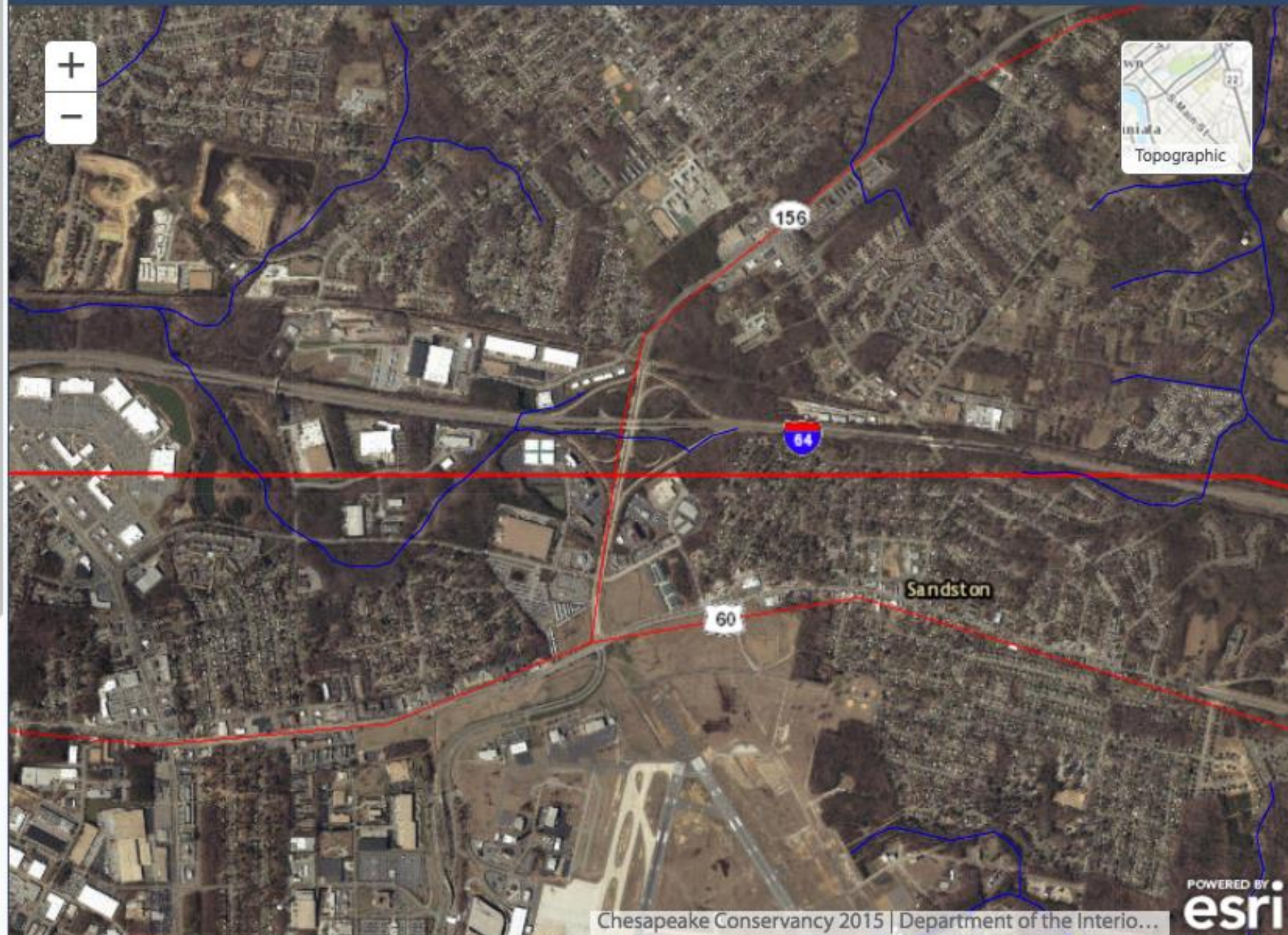
Interstate Labels

Major Roads Labels

US Highways Labels

Other Roads Labels

# Chesapeake Conservancy

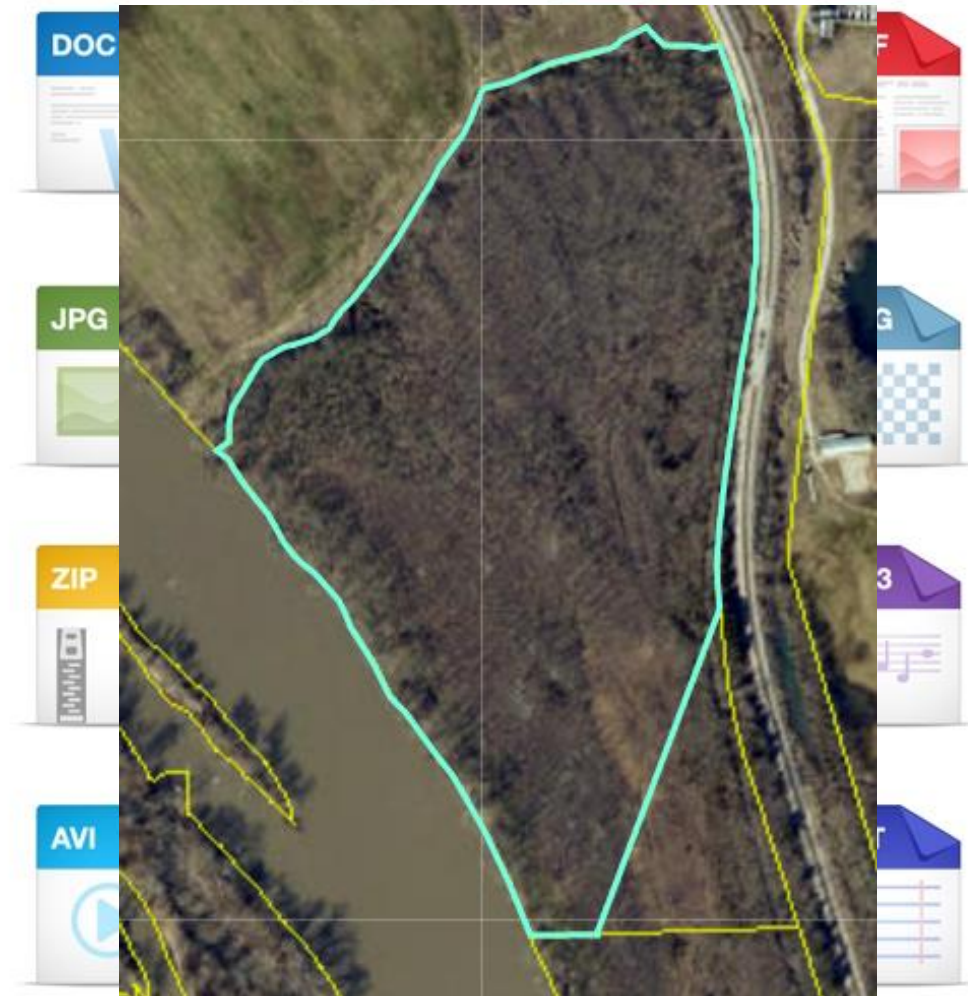


## Data Creation / Curation

Subset

Standardization

Assessments



Parcel ID:

**i** County Goochland

**i** Area (Acres) 43.77

**i** Protected No

**i** Adjacent Yes

**i** Buffer Length (ft.) 4550

**i** 100 Yr Floodplain Yes

**i** 500 Yr Floodplain Yes

**i** Historical Point No





## Data Creation / Curation

Subset

Standardization

## Assessments

## Filters

Adjacent to protected land



Contains a historic point



Nearby to scenic byway



Within in 100 year flood plain




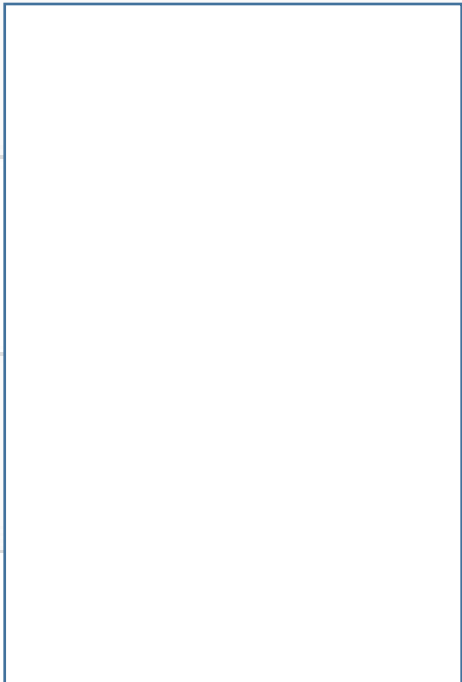



Find Parcels

Go to

Parcel ID

County

GIS Acres

	<input type="button" value="Display"/>		Charles City	798.8
	<input type="button" value="Display"/>		Goochland	387.32
	<input type="button" value="Display"/>		Charles City	190.48
	<input type="button" value="Display"/>		Powhatan	124.82

Excel

Showing 1 to 10 of 12 entries

Previous

1

2

Next

## Data Creation / Curation

Subset

Standardization

Assessments

Filters

Land Cover

Entire Parcel

Alongshore buffer length

At least	500	ft
At most	20000	ft

Forest coverage in 35 ft buffer

At least	40	%
At most	100	%

Water 0.7

## Web-based Access

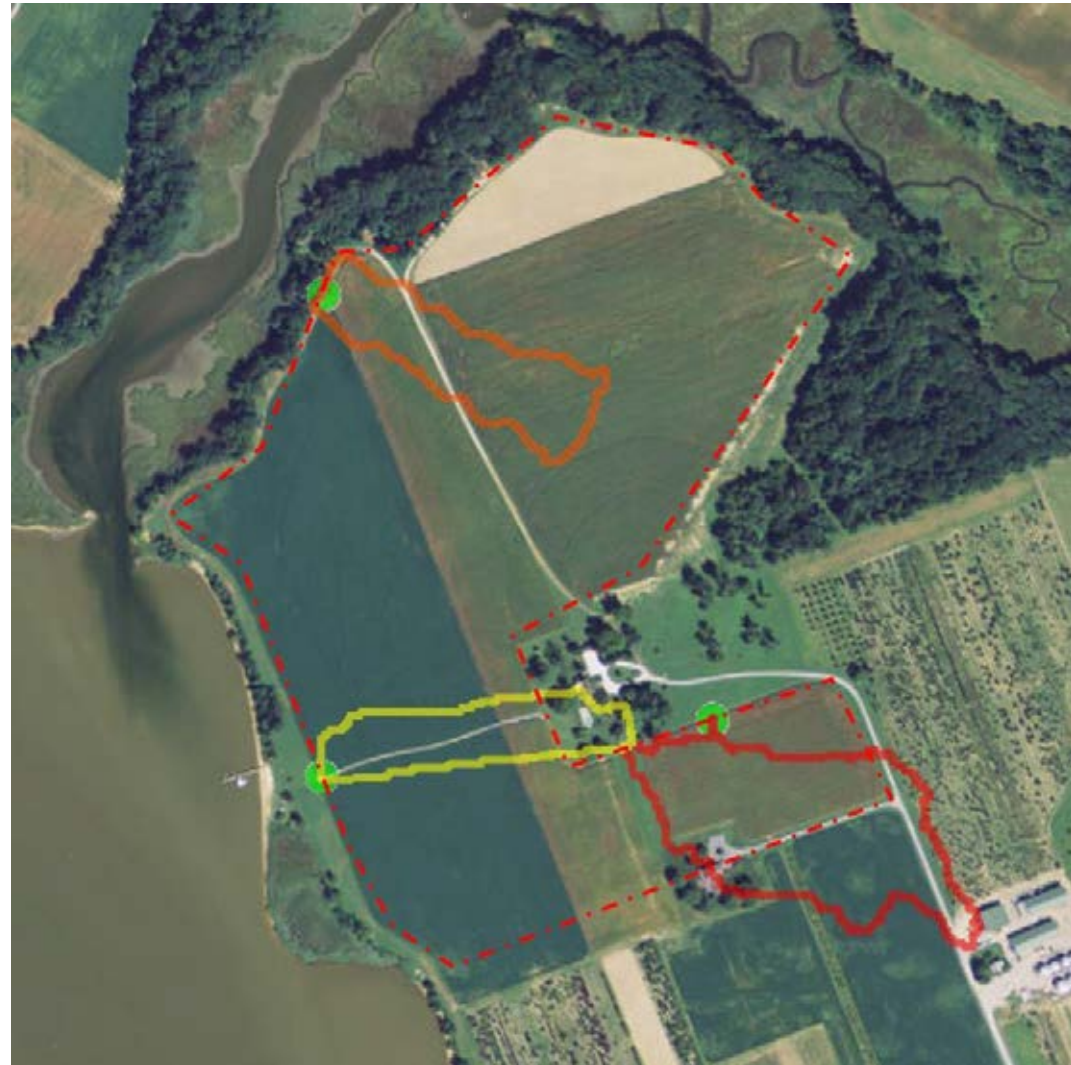
No software

Any browser

## Analysis

Watershed delineation

...?



# Conservation Toolbox



## Instant Outputs

Apply results

Share your work

## Spreadsheets

PDFs...

A		Willow Oaks CC				E					
Parcel ID		Parcel:	166915		Richmond						
1						<b>Adjacent to Protected</b>					
2		<b>Attributes</b>				Yes					
3		Protected Land	No	Within 100 Year Flood Plain	No	Yes					
4		Adjacent to Protected Land	No	Within 500 Year Flood Plain	No	Yes					
5		Contains a Historical Point	No	% Wetland (HWC)	5.057860	Yes					
6		Within a Historical Site	Yes	% Wetland (WWC)	57.806173	Yes					
7		Near Scenic Byway or John Smith Trail	Yes	% Wetland (WWC Plus)	28.302967	Yes					
8		<b>GIS Acres</b>	244.74	<b>Land Cover Composition</b>		Yes					
9		<b>Deeded Acres</b>	--	Online Parcel	100 Foot Buffer	55 Foot Buffer					
10		<b>Alongshore Length (ft.)</b>	12470			Yes					
11				<b>Acreage</b>	<b>%</b>	<b>Acreage</b>					
12				Forest	56.74	24	90.55	37	112.50	46	Yes
13				Developed	19.58	8	2.45	1	2.45	1	Yes
14				Low Vegetation	151.71	62	132.18	54	119.13	45	Yes
15				Agriculture	0	0	0	0	0	0	Yes
16				Bare Earth	4.89	2	2.45	1	2.45	1	Yes
17				Wetlands	0	0	0	0	0	0	Yes
18				Water	7.34	3	14.68	6	17.13	7	Yes
				<b>Notes</b>							

## Monitoring and Reporting

Resource intensive

Paper based

## Web-based App

Prioritization

Desktop or mobile



# Change Detection Slider

Comparing NAIP Imagery from 2011 and 2013

1 2 3

## Plain Imagery

A new development.



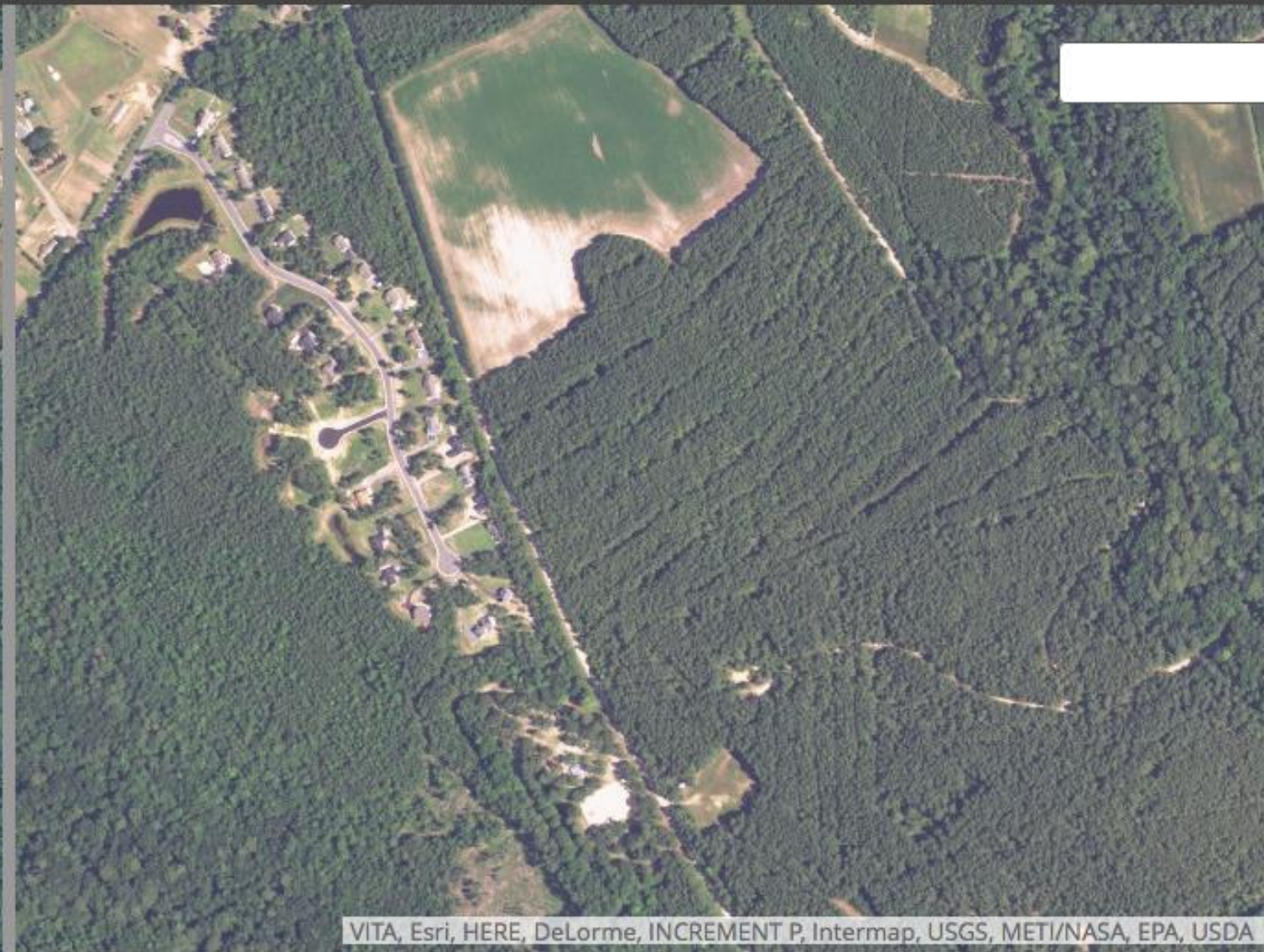
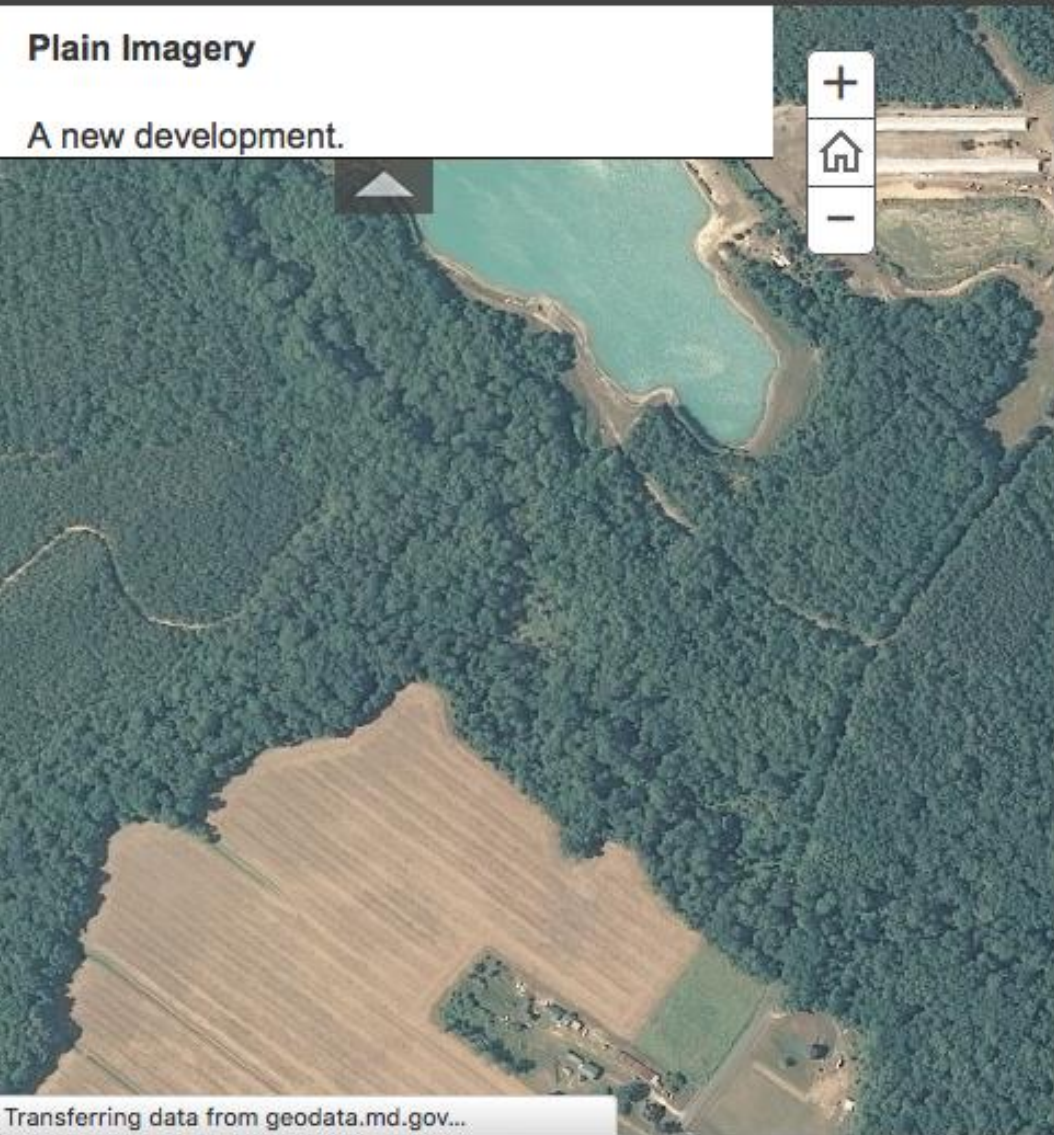
# Change Detection Slider

Comparing NAIP Imagery from 2011 and 2013

1 2 3

Plain Imagery

A new development.





# Contact Information

Cassandra Pallai

[cpallai@chesapeakeconservancy.org](mailto:cpallai@chesapeakeconservancy.org)

Colin Stief

[cstief@chesapeakeconservancy.org](mailto:cstief@chesapeakeconservancy.org)

[www.chesapeakeconservancy.org](http://www.chesapeakeconservancy.org)