

Baltimore County Fiscal Year 2024 Program Open Space Annual Program



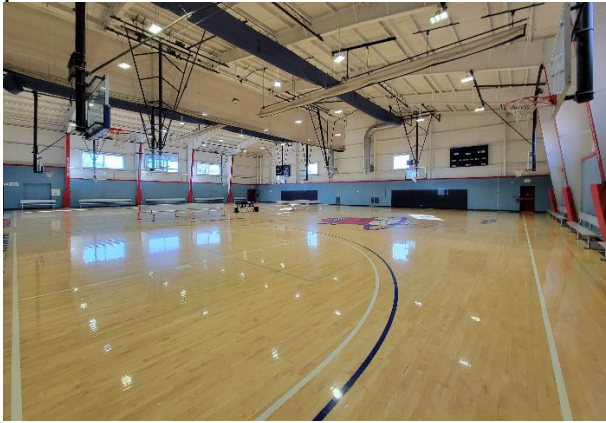
Images (clockwise from top left):

1. Map showing possible location of disc golf course at Day's Cove Park, included in POS development for FY24.
2. Gymnasium at Leadership Through Athletics Property/Southwest Recreation Center, which was acquired in FY23 with POS funding.
3. One possible design for Belfast Road Park Site, which was included in POS development for FY23.
4. Bridge at Trolley #9 trail. POS development funds are set aside for trail renovations/development in FY23 and FY24, though the sites are still being selected.
5. Generalized plans laid out in the Oregon Ridge Park Master Plan. POS development FY24 funds will be used for some renovations and enhancements at Oregon Ridge.
6. Rendering of destination playground at Tradepoint Atlantic/Sparrows Point Park Site, which was included in POS acquisition and development in FY23.

INTRODUCTION

This Baltimore County Fiscal Year 2024 Annual Program lists park acquisition and development projects currently being explored by Baltimore County, for which fiscal year 2024 Maryland Program Open Space (POS) funding may be pursued. Projects listed here will help to achieve the goals and objectives of Baltimore County's Master Plan 2020 (as amended) and the County's 2022 Land Preservation, Parks and Recreation Plans (LPPRP). Specifically, the projects will support the following LPPRP 2022 and amended Master Plan 2020 goals:

- Acquire a variety of parklands and recreation sites in order to meet the needs of County residents and provide a park system that contributes to the County's quality of life and overall land preservation efforts.








2023 ACQUISITION

In 2023, a ~1.8-acre property with a 20,000+ square foot indoor sports facility with a double gymnasium, additional small gymnasium and other facilities for sports programs. This was a unique opportunity to add a ready-made facility to Baltimore County's recreation and parks inventory.

- Develop, enhance, and rehabilitate parks to meet the recreational needs and demands of residents of all ages and abilities, to attract visitors, and to support the organized recreation programs of the partner recreation and parks councils.
- Enhance public access to the natural environment, including the Chesapeake Bay and its tributaries, and seek to increase public knowledge of and appreciation for nature.
- Work with Baltimore County's Department of Environmental Protection and Sustainability (EPS) to improve environmental conditions at the County's parks and recreation sites, and to help protect and preserve the natural environment.
- Pursue alternative means for providing recreational opportunities through partnerships with other agencies and organizations.
- Expand opportunities for residents to participate in and experience arts and cultural programs and events, and work to preserve historically and culturally significant sites for the appreciation and enjoyment of the County's residents and visitors.
- Continue to partner with affiliated resident organizations, and participate in various partnerships in an effort to enhance public recreation access for Baltimore County residents and visitors.

The projects proposed in this Annual Program also support other planning documents and initiatives, and help to achieve the 5-year priorities and goals identified in the State of Maryland’s “Land Preservation and Recreation Plan: 2019-2023” (below graphic from the plan):

	<p>Goal 1: Coordination and Collaboration Strengthen coordination and collaboration between federal, state, and local government agencies and other key stakeholders in planning for the provision of outdoor recreation opportunities and land conservation initiatives.</p>
	<p>Goal 2: Promote the Benefits of Outdoor Recreation and Conservation of Natural Lands Promote the economic, cultural, health, and environmental benefits of outdoor recreation and conservation of natural lands. Seek to increase the public's understanding of these benefits to enhance interest and participation in recreating outdoors in Maryland.</p>
	<p>Goal 3: Increase Access to Open Spaces and Waterfronts Increase and improve opportunities for all segments of the population to access land and water-based outdoor recreation opportunities.</p>
	<p>Goal 4: Improve What's Already Available Improve the overall quality of outdoor recreation infrastructure at public parks and outdoor areas across the state.</p>
	<p>Goal 5: Develop an Informed Stewardship Culture Promote environmental education and use of parks and outdoor areas as teaching tools to foster a positive stewardship ethos among children, youth, and their families.</p>

CAPITAL PROJECT SELECTION PROCESSES

While the goals and objectives identified in the County’s LPPRP provide the general impetus for conducting various capital projects, the means for selecting such projects varies based on the type of capital projects. The methods for choosing acquisition projects differ significantly from those used to establish development, enhancement, and rehabilitation projects. Following is a summary of the processes Baltimore County utilizes to identify, prioritize and select capital projects.

A. Acquisition Projects

In any given year, Baltimore County, through its Department of Recreation and Parks and its real estate office, pursues numerous properties to serve as park sites. While many candidate properties may be evaluated and considered, the acquisition process is typically initiated only in circumstance where the land in question will help to achieve the County’s present park acquisition goals and objectives. An assortment of factors are considered when deciding whether or not to pursue acquisition opportunities, including the supply of parkland in a given area, the need to acquire land suitable for accommodating

facilities required to meet recreational demands, the availability of undeveloped land within a geographic area, local population growth trends, and relative public and environmental benefits. Baltimore County is firmly committed to providing equitable recreational opportunities countywide, with the park acquisition program playing a key role in this mission. In some circumstances the County will identify certain areas of need, and make it a priority to seek out potential site for park acquisition. However, the diminished availability of high-quality properties in many areas of the County can make the acquisition of adequate parklands a challenging proposition.

FY23 ACQUISITIONS DESCRIPTION



There were four acquisitions with FY23 Program Open Space funds (clockwise from top left): Leadership Through Athletics/Southwest Regional Recreation Center (1.8 acres), Tradepoint Atlantic/Sparrows Point Park Land Donation (22.0 acres), Dogwood Road Park Site (108.9 acres), and Woodley Avenue Park Site (3.8 acres)

The **Leadership Through Athletics/Southwest Regional Recreation Center** is currently undergoing renovations to be ready for use by residents.

Designs for **Tradepoint Atlantic/Sparrows Point Park** include an indoor recreation center, turf field, and a destination playground, with construction to begin in the coming year.

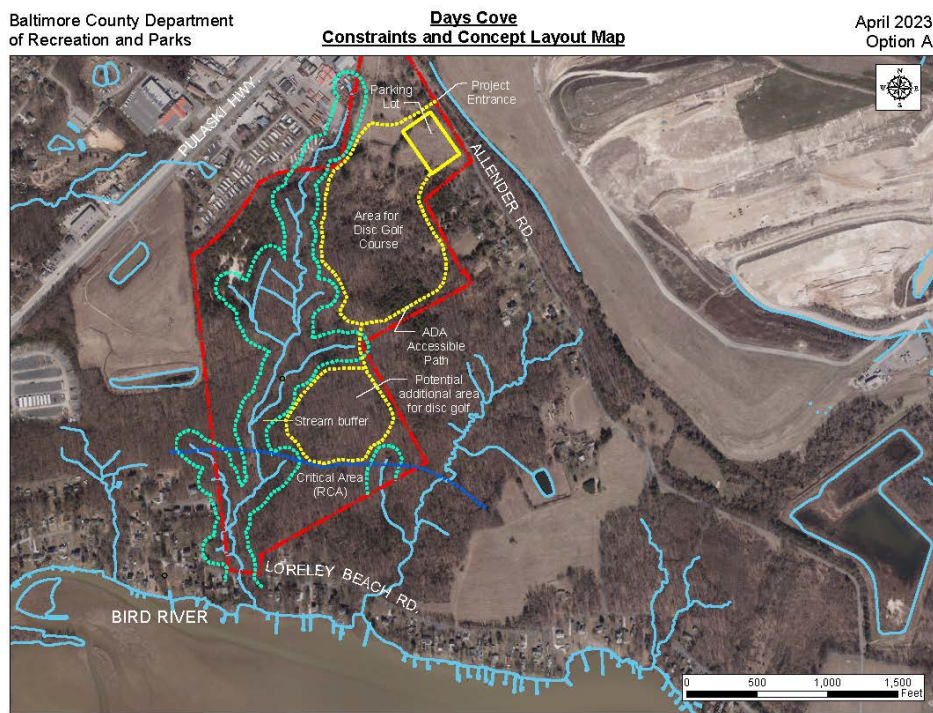
The structures at **Woodley Avenue Park Site** will be demolished in spring/summer 2023.

No designs have yet been made for **Dogwood Road Park Site**.

B. Park Development, Enhancement and Rehabilitation Projects

The “development side” of POS helps to fund a wide range of park development, enhancement, and rehabilitation projects. Up to 75% of eligible capital project costs may be funded through POS, though the amount of POS funding utilized varies by project. POS is also sometimes combined with other outside funding sources, such as State bond bills and capital grants. The means by which development, enhancement, and rehabilitation projects are chosen varies by the type of project. The following describes the types of projects that may be funded with POS assistance, as well as the general process by which these projects are typically selected.

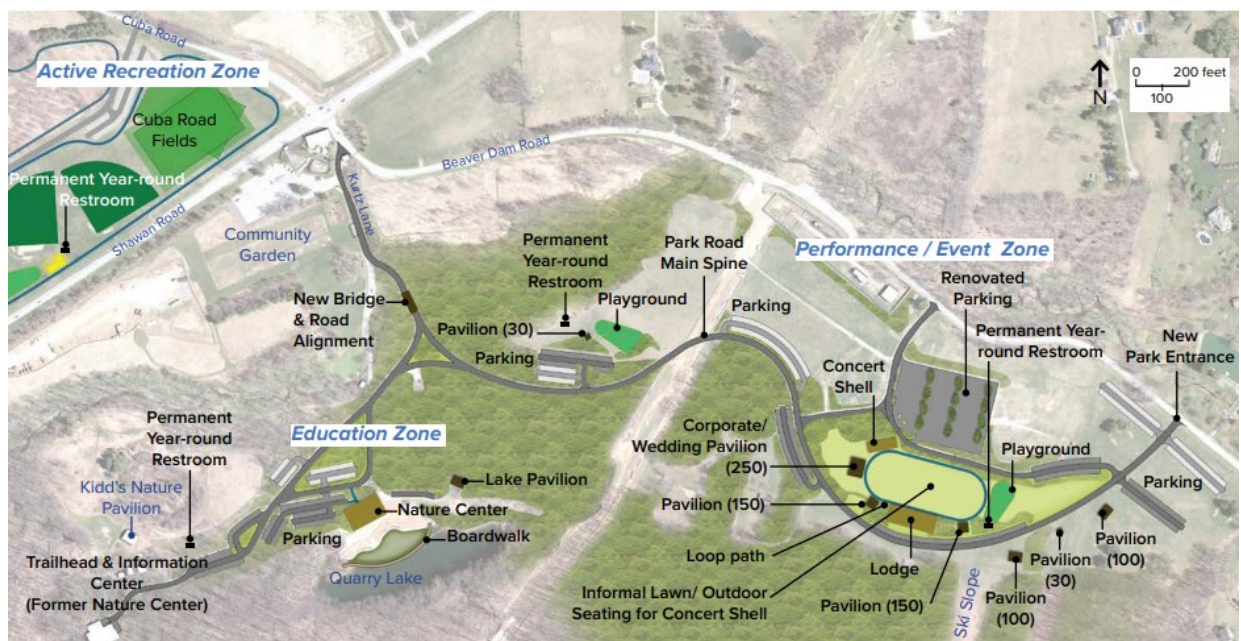
- **New Park Development:** New park development projects are often initiated shortly after the acquisition of a site that was procured to meet existing recreational needs. Funding is usually set aside for site engineering between one and five years after site acquisition. In some cases, a site may remain unimproved longer than five years, until there is available funding and sufficient demand for park development. Such recreational demands and needs are usually the key consideration in deciding when a new park development project is to be funded.
 - The earliest and largest portion of Day’s Cove Park Site, which is included for initial development in this FY24 Annual program, was purchased by the County in 1987 with additional parcels added in 2016 and 2017, but it has not yet been developed. With disc golf growing in popularity, this is a great opportunity to use an undeveloped park site to provide a unique recreational facility, which will be the first full disc golf course in a Baltimore County public park.



Aerial photography from Spring 2020. Displayed property lines are approximate, and should not be considered authoritative. Map created by the Baltimore County Dept. of Recreation and Parks, December 2022

Above: Conceptual plan for the proposed disc golf course at Day’s Cove Park Site

- Phased Park Construction:** Another form of park development is phased construction. This most typically occurs at larger parks, most often when it is not financially or physically feasible to fully develop the entire park immediately. In such situations, a concept plan or park “master plan” may be formulated for the entirety of the park site prior to the initial phase of development, with subsequent engineering of the first phase being based upon the concept plan. The second phase may occur soon afterwards – usually in another fiscal year – or multiple years later. The proposed renovations and enhancements at Oregon Ridge Park will begin to implement phased development as outlined in the Oregon Ridge Park Master Plan. The overall plan includes changes that will take place over 30 years. The initial phase is projected to include trail improvements, a paved one-mile loop path, septic and well improvements, and various parking/road improvements. The scope for the project to use POS funding is not yet defined, but will advance Baltimore County toward the objectives of the Oregon Ridge Park Master Plan.



- Park Enhancements:** Enhancement projects help to improve recreational opportunities at existing parks and recreation sites, and range from entirely new facilities and amenities, to improvements to existing facilities to make them more functional and/or implement new technology. LED lighting installation and conversion at Linover Park and Banneker Community Center, respectively, will enhance these facilities, enabling/improving the ability to have evening athletic activities.
- Rehabilitation:** Park facilities and amenities have a finite life cycle, and eventually need to be replaced or comprehensively rehabilitated to keep them safe for public use. Most of the County’s facility rehabilitation projects are funded without POS assistance, as POS regulations allow only a small proportion of a county’s POS allocation to be utilized for facility renovations/rehabilitation.

FY23 PARK DEVELOPMENT PROJECTS

The **Belfast Road Park Site** is currently in the design phase. There were public meetings held on October 27, 2022 and May 4, 2023 to gather input on proposals.



One proposal for amenities at Belfast Road Park Site to include athletic fields, parking, and an indoor recreation building

The proposed renovations and enhancements at **Cromwell Valley Park** are currently in the design phase and awaiting State review. The scope is still to be determined, but is likely to include expanded parking, roadway enhancements, structural enhancements of the barnatorium, an expanded nature trail, and a new pavilion.



Improvements are needed at Cromwell Valley Park to improve roadway and parking conditions.

Design is complete for the park development of **Sparrows Point Park**. It is anticipated to include an indoor recreation center, a turf athletic field, and a destination playground, with elements referencing the history of Tradeport Atlantic at the site. The project is out to bid, with a construction start date anticipated in late 2023.



Design for destination playground at Sparrows Point Park

Trail Project(s) are still being identified. Residents have repeatedly expressed interest in greater connectivity between neighborhoods and parks and between parks. Trail improvements and construction using POS funding will help us toward this goal.

Greens Lane Park has been postponed and the funds have been redistributed, with the \$2M in budgeted POS funding reallocated to renovations and enhancements at Cromwell Valley Park (\$1M) and park development at Sparrows Point Park (\$1M)

POTENTIAL FISCAL YEAR 2024 PROJECTS

Parts two and three of this annual program list prospective fiscal year 2024 acquisition and development projects. These sections provide detailed information regarding recreation and parks projects for which POS funding may be requested. Information about other State funding sources such as bond bills and capital grants is likewise provided. All projects listed are sponsored by Baltimore County, which has no incorporated towns within its boundaries. Additional projects not listed in this program may be added throughout the fiscal year as needed, at which time this program shall be amended through written notification to the Maryland Department of Natural Resources and the Maryland Department of Planning. It is important to note that the inclusion of projects within the annual program or the LPPRP does not guarantee that capital funding will be available for implementation, and project priorities may be revised.

POS regulations allow for 100% funding reimbursement for park acquisition projects, with the maximum eligible reimbursement amount typically being based upon the average of two property appraisals, or the purchase price (whichever is lower). POS will fund up to 75% of park development, enhancement or rehabilitation projects costs.

The tables that follow identify the presently envisioned projects for which POS funding may be utilized. The columns that comprise the tables are:

- **Project Name and Description:** The name and brief description of each project or job.
- **Project's Relationship to County LPPRP and State goals:** This column lists the most relevant goals and objectives of the County's Master Plan and the County Land Preservation, Parks and Recreation Plan, and indicates how the project supports the State of Maryland's goals outlined in the Maryland Land Preservation and Recreation Plan.
- **Acreage Data:** This column presents various park and recreation site acreage data, including the size in acres of parks with development projects. Acreage is not listed for sites in which the specific project sites have not yet been identified.
- **Source of Funds:** These columns provide details about the various FY 2024 funding sources that are projected to be utilized for each specific project/job.

Notes pertaining to the lists of potential projects: The funding amounts identified, for the most part, are approximate and do not reflect actual contract costs. Additionally, in order to prevent potential land speculation and avoid creating competition or undue value expectations for prospective property purchases, specific acquisition sites are not generally identified within this Annual Program. Instead, more general priority acquisition areas are identified.

Finally, a series of maps are provided for the purpose of identifying project locations throughout the County. Maps are not provided for projects that are not site specific, such as potential acquisitions not yet identified and trail improvements to be located in a variety of parks.

ACQUISITION PROJECTS

PROSPECTIVE BALTIMORE COUNTY FISCAL YEAR 2024 ACQUISITION PROJECTS

Project Name and Description	Project's Relationship to LPPRP and State Goals	Acre Data	Total Funding	Local Funding	POS Funding	Other Funding	Federal Funding	Funding Notes
<p>Priority Area Park Acquisition(s): Acquisition of various properties within areas with defined or anticipated parkland, open space and recreational facility needs. Acquisitions may be pursued to provide sites for recreational development, expand upon existing parks and recreation sites, acquire key parcels along planned trails or green space corridors, preserve green/open space, or to produce a more equitable distribution of parkland across our county. Potential areas of emphasis for FY24 are sites within communities with a strong need for parks and/or high social vulnerability, and properties to serve as pocket parks along established suburban corridors.</p>	<p>LPPRP/COUNTY MASTER PLAN: Helps to meet the general goal of acquiring a variety of parklands and recreation sites for multiple purposes. Certain acquisitions could help achieve goal of enhancing public access to the Bay and its tributaries. STATE GOALS: Supports the Maryland Land Preservation and Recreation Plan Goal to "Increase and improve opportunities for all segments of the population to access land and water-based outdoor recreation opportunities."</p>	TBD	\$9,832,416	\$2,500,000	\$6,082,416	\$1,250,000	\$0	Other funding is state aid from the 2023 State Legislature
TOTALS:			\$9,832,416	\$2,500,000	\$6,082,416	\$1,250,000	\$0	

DEVELOPMENT PROJECTS

PROSPECTIVE BALTIMORE COUNTY FISCAL YEAR 2024 PARK DEVELOPMENT, ENHANCEMENT AND REHABILITATION PROJECTS

Project Name and Description	Project's Relationship to LPPRP and State Goals	Park/ Site Acres	Total Funding*	Local Funding*	POS Funding*	Other Funding*	Federal Funding*	Funding Notes
<p>Linover Park LED Field Lighting System Construction: This project consists of the construction of a new light-emitting diode (LED) field lighting system at Linover Park for one athletic field. This project will enhance the park's amenities, enabling evening activities, including recreation council athletic leagues.</p>	<p>LPPRP/COUNTY MASTER PLAN: Develop, enhance, and rehabilitate parks to meet the recreational needs and demands of residents of all ages and abilities, to attract visitors, and to support the organized recreation programs of the partner recreation and parks councils; Provide a sufficient quantity of traditional outdoor recreation facilities such as ball diamonds, athletic fields, sports courts, playgrounds and picnic areas. STATE GOALS: Improve the overall quality of outdoor recreation infrastructure at public parks and outdoor areas across the state.</p>	20.0	\$700,000	\$250,000	\$450,000	\$0	\$0	
<p>Banneker Community Center LED Lighting Conversion: This project consists of the upgrade of the existing field lighting system at Banneker Community Center. The existing aged metal halide lighting system, which serves an overlay ball diamond and athletic field, will be replaced with a more effective and energy efficient light-emitting diode (LED) system. This project will be one of the earliest lighting conversions initiated to enhance the County's athletic facility lighting systems.</p>	<p>LPPRP/COUNTY MASTER PLAN: Develop, enhance, and rehabilitate parks to meet the recreational needs and demands of residents of all ages and abilities, to attract visitors, and to support the organized recreation programs of the partner recreation and parks councils; Provide a sufficient quantity of traditional outdoor recreation facilities such as ball diamonds, athletic fields, sports courts, playgrounds and picnic areas. STATE GOALS: Improve the overall quality of outdoor recreation infrastructure at public parks and outdoor areas across the state.</p>	28.6	\$550,000	\$150,000	\$400,000	\$0	\$0	

*- Funding amounts are approximate, and are subject to change

PROSPECTIVE BALTIMORE COUNTY FISCAL YEAR 2024 PARK DEVELOPMENT, ENHANCEMENT AND REHABILITATION PROJECTS

Project Name and Description	Project's Relationship to LPPRP and State Goals	Park/ Site Acres	Total Funding*	Local Funding*	POS Funding*	Other Funding*	Federal Funding*	Funding Notes
<p>Oregon Ridge Park Renovations and Enhancements: This project consists of various renovations and enhancements at Oregon Ridge, the County's largest park with an extensive trail system. This project will be guided by goals laid out in the recently completed Oregon Ridge Park Master Plan.</p>	<p>LPPRP/COUNTY MASTER PLAN: Develop, enhance, and rehabilitate parks to meet the recreational needs and demands of residents of all ages and abilities, to attract visitors, and to support the organized recreation programs of the partner recreation and parks councilss; Enhance public access to the natural environment, including the Chesapeake Bay and its tributaries, and seek to increase public knowledge of and appreciation for nature. STATE GOALS: Promote the economic, cultural, health, and environmental benefits of outdoor recreation and conservation of natural lands. Seek to increase the public's understanding of these benefits to enhance interest and participation in recreating outdoors in Maryland.</p>	1099.5	\$10,000,000	\$4,200,000	\$4,000,000	\$1,800,000	\$0	<p>Other funding consists of \$1.7M in Maryland LPPI and \$100,000 in State Aid from the 2022 State Legislature</p>

*- Funding amounts are approximate, and are subject to change

PROSPECTIVE BALTIMORE COUNTY FISCAL YEAR 2024 PARK DEVELOPMENT, ENHANCEMENT AND REHABILITATION PROJECTS

Project Name and Description	Project's Relationship to LPPRP and State Goals	Park/ Site Acres	Total Funding*	Local Funding*	POS Funding*	Other Funding*	Federal Funding*	Funding Notes
<p>Trail Renovation/Construction - Location TBD: This project involves improvements to various paths and trails in the County, with the exact sites to be determined. In the survey for the 2022 LPPRP, residents expressed a high level of desire for increased connectivity and more places to walk, run, and bike. This project may involve restoration of existing paths/trails, as well as the construction of new ones.</p>	<p>LPPRP/COUNTY MASTER PLAN: Develop, enhance, and rehabilitate parks to meet the recreational needs and demands of residents of all ages and abilities, to attract visitors, and to support the organized recreation programs of the partner recreation and parks councils; Enhance public access to the natural environment, including the Chesapeake Bay and its tributaries, and seek to increase public knowledge of and appreciation for nature. STATE GOALS: Promote the economic, cultural, health, and environmental benefits of outdoor recreation and conservation of natural lands. Seek to increase the public's understanding of these benefits to enhance interest and participation in recreating outdoors in Maryland.</p>	-	\$525,000	\$225,000	\$300,000	\$0	\$0	Multiple sites under consideration

*- Funding amounts are approximate, and are subject to change

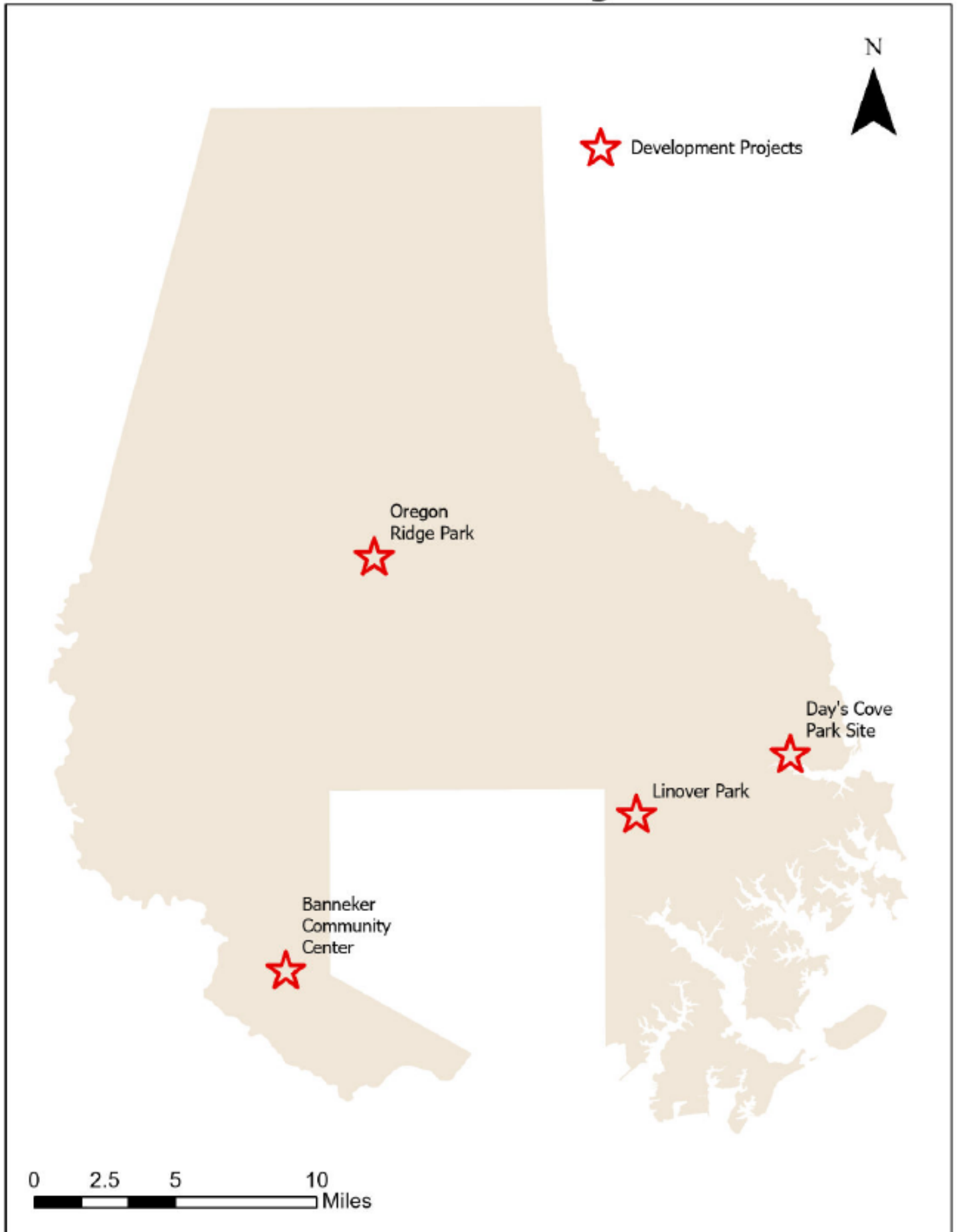
PROSPECTIVE BALTIMORE COUNTY FISCAL YEAR 2024 PARK DEVELOPMENT, ENHANCEMENT AND REHABILITATION PROJECTS

Project Name and Description	Project's Relationship to LPPRP and State Goals	Park/ Site Acres	Total Funding*	Local Funding*	POS Funding*	Other Funding*	Federal Funding*	Funding Notes
<p>Day's Cove Park Site Development: This project consists of the development of amenities at Day's Cove Park Site, likely to include a disc golf course, paths, and parking. This project will diversify the recreation options as the first full disc golf course in a Baltimore County Park.</p>	<p>LPPRP/COUNTY MASTER PLAN: Develop, enhance, and rehabilitate parks to meet the recreational needs and demands of residents of all ages and abilities, to attract visitors, and to support the organized recreation programs of the partner recreation and parks councils STATE GOALS: Promote the economic, cultural, health, and environmental benefits of outdoor recreation and conservation of natural lands. Seek to increase the public's understanding of these benefits to enhance interest and participation in recreating outdoors in Maryland.</p>	97.9	\$2,000,000	\$1,067,584	\$932,416	\$0	\$0	
TOTALS:			\$13,775,000	\$5,892,584	\$6,082,416	\$1,800,000	\$0	

*- Funding amounts are approximate, and are subject to change

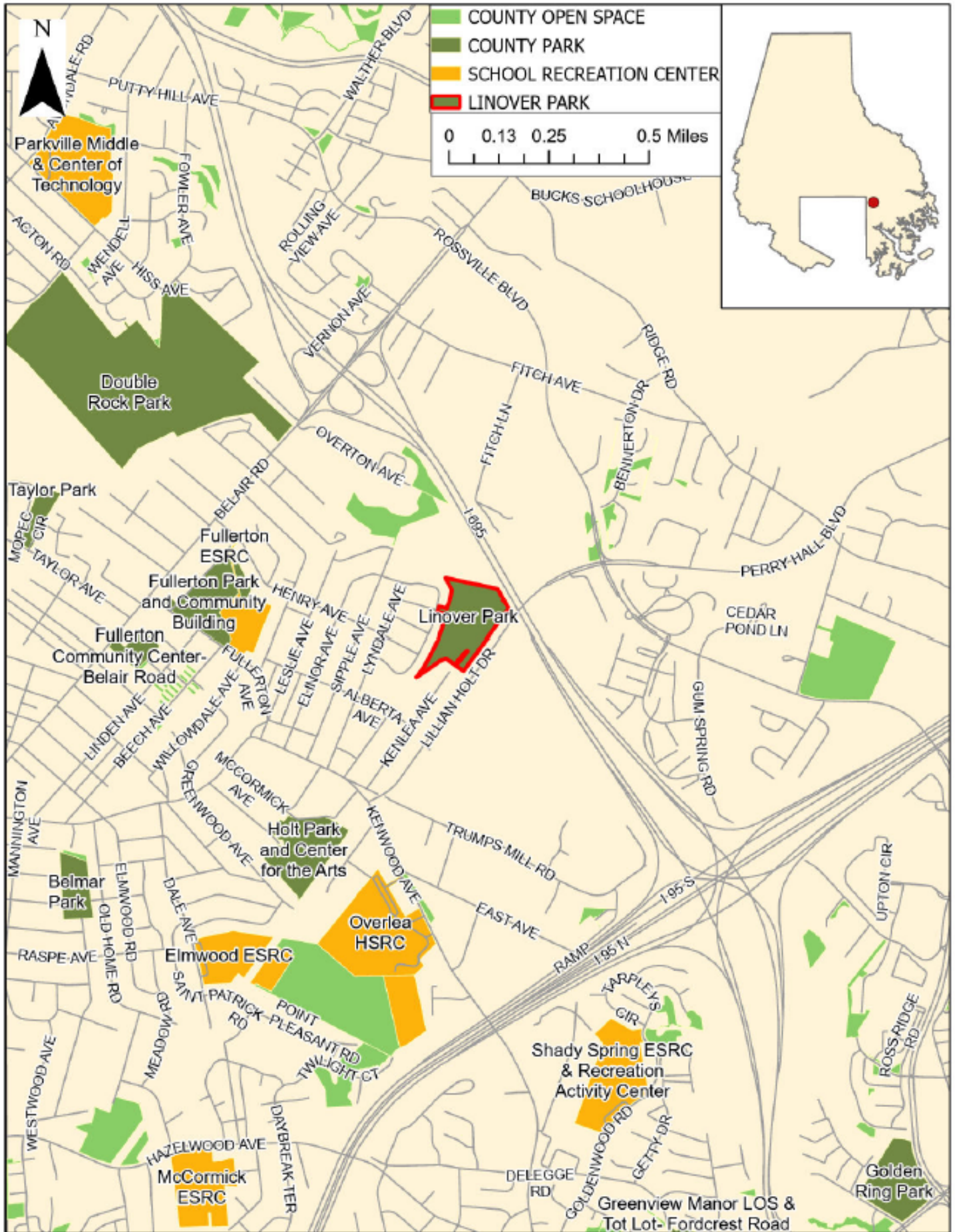
MAPS

FY24 Potential POS Project Sites



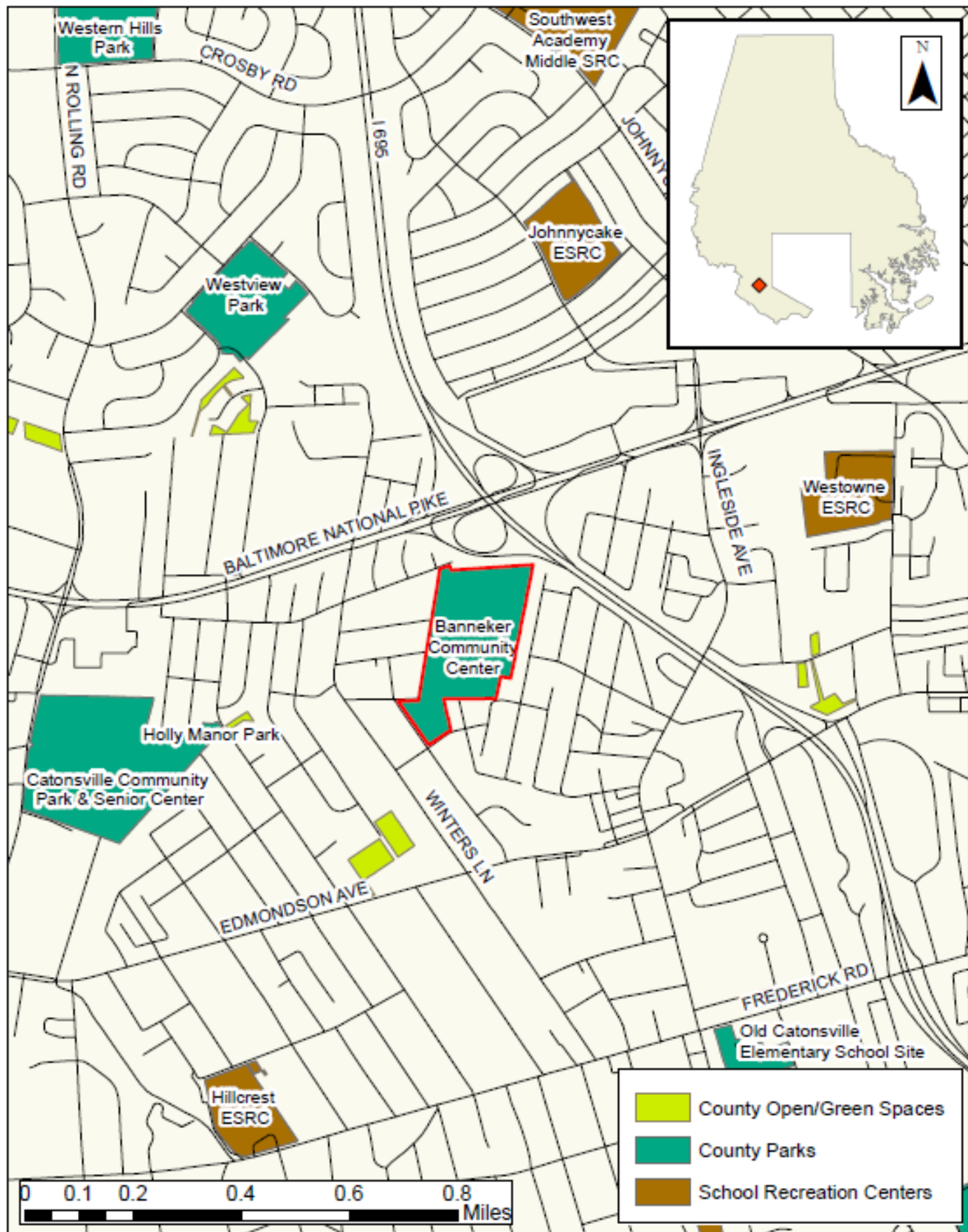
Map created by the Baltimore County Department of Recreation and Parks, 6/9/2023.

Location Map: Linover Park



Displayed property lines are approximate, and should not be considered authoritative. Map created by the Baltimore County Department of Recreation and Parks, 6/8/2023.

LOCATION MAP: BANNEKER COMMUNITY CENTER

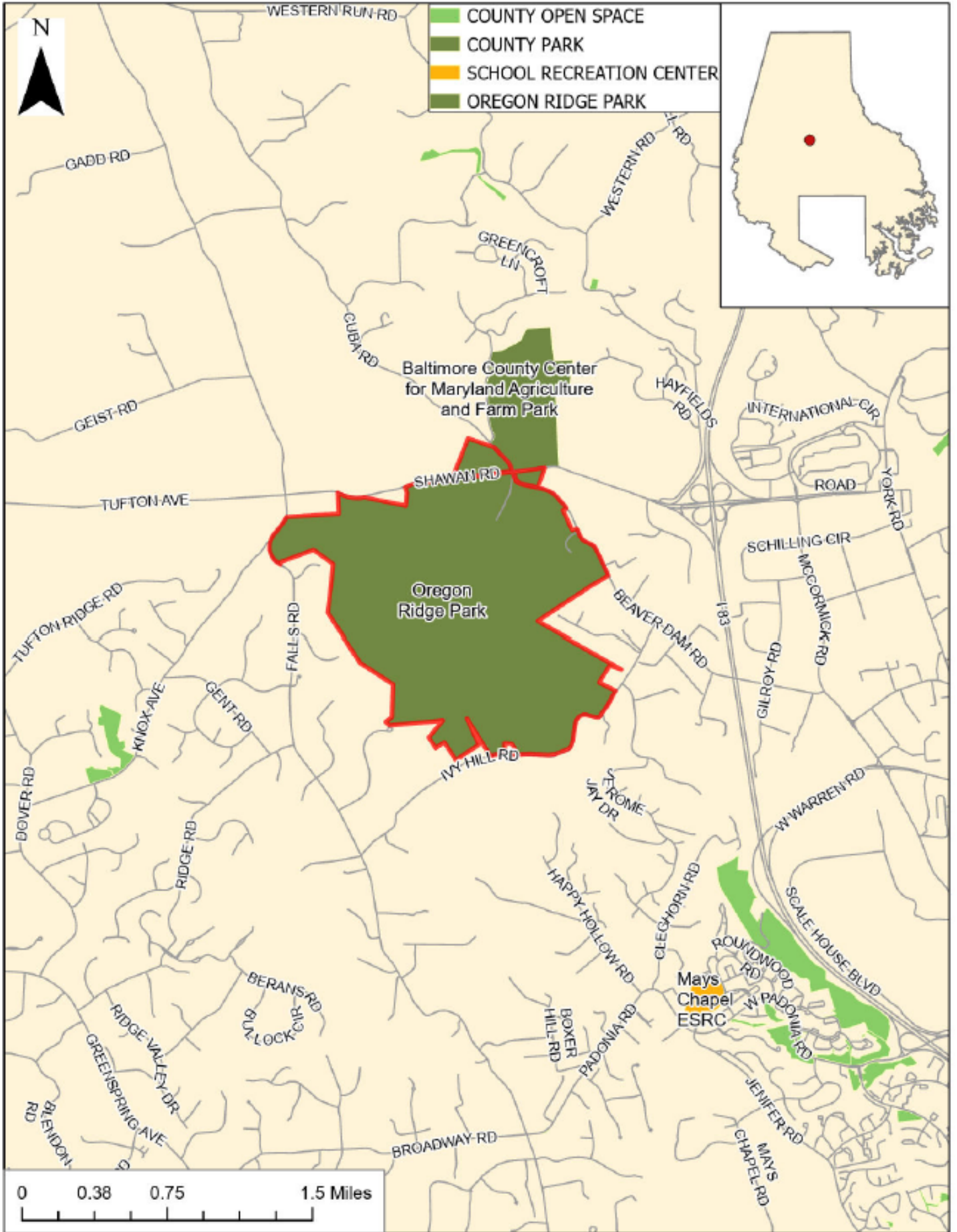


All data displayed from Baltimore County, Maryland Geographic Information System.

Map created by the Baltimore County Department of Recreation and Parks.

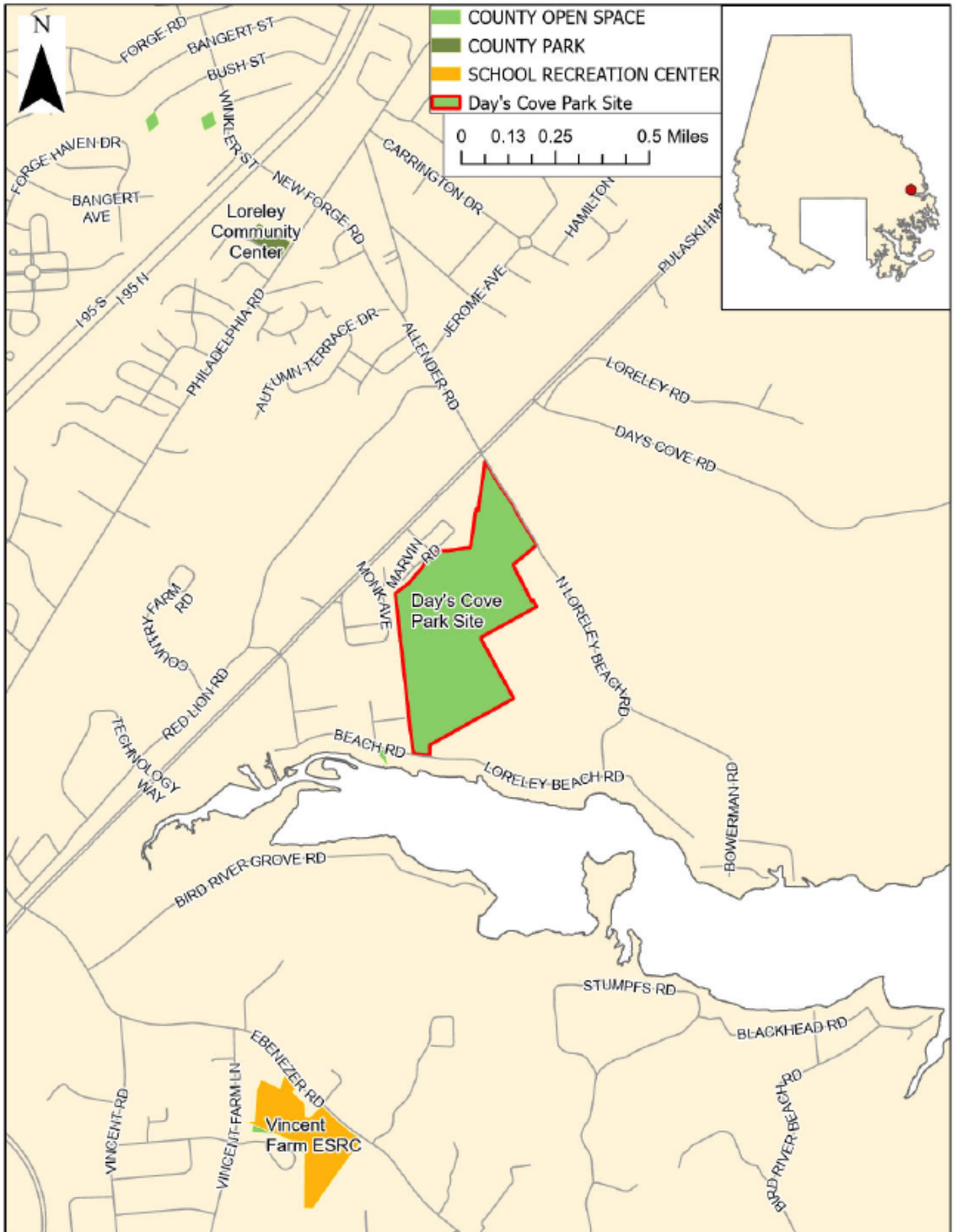
Date Created: 12/17/2021

Location Map: Oregon Ridge Park



Displayed property lines are approximate, and should not be considered authoritative.
Map created by the Baltimore County Department of Recreation and Parks, 6/9/2023.

Location Map: Day's Cove Park Site



Displayed property lines are approximate, and should not be considered authoritative.
Map created by the Baltimore County Department of Recreation and Parks, 6/8/2023.