



# No-Net-Loss of Forest Policy Recommendations to the Maryland Department of Natural Resources



- Forests and trees provide clean air, clean water, flood control, etc.
- Over the last 60 years, Maryland has lost an average ~7,000 acres per year and loss is expected to continue
- “(D)evelopment of forests due to **uninformed local land use decisions** leading to the parcelization and fragmentation of forests and conversion to non-forest uses.”
- Maryland General Assembly asked for these recommendations through:
  - Sustainable Forestry Act of 2009 (SB 549) and
  - Forest Conservation Act (SB 666)—No Net Loss of Forest Policy

- Reduce the rate of loss by 2020
- Maintain the state's existing 40% forest coverage
- Not just extent, but also quality



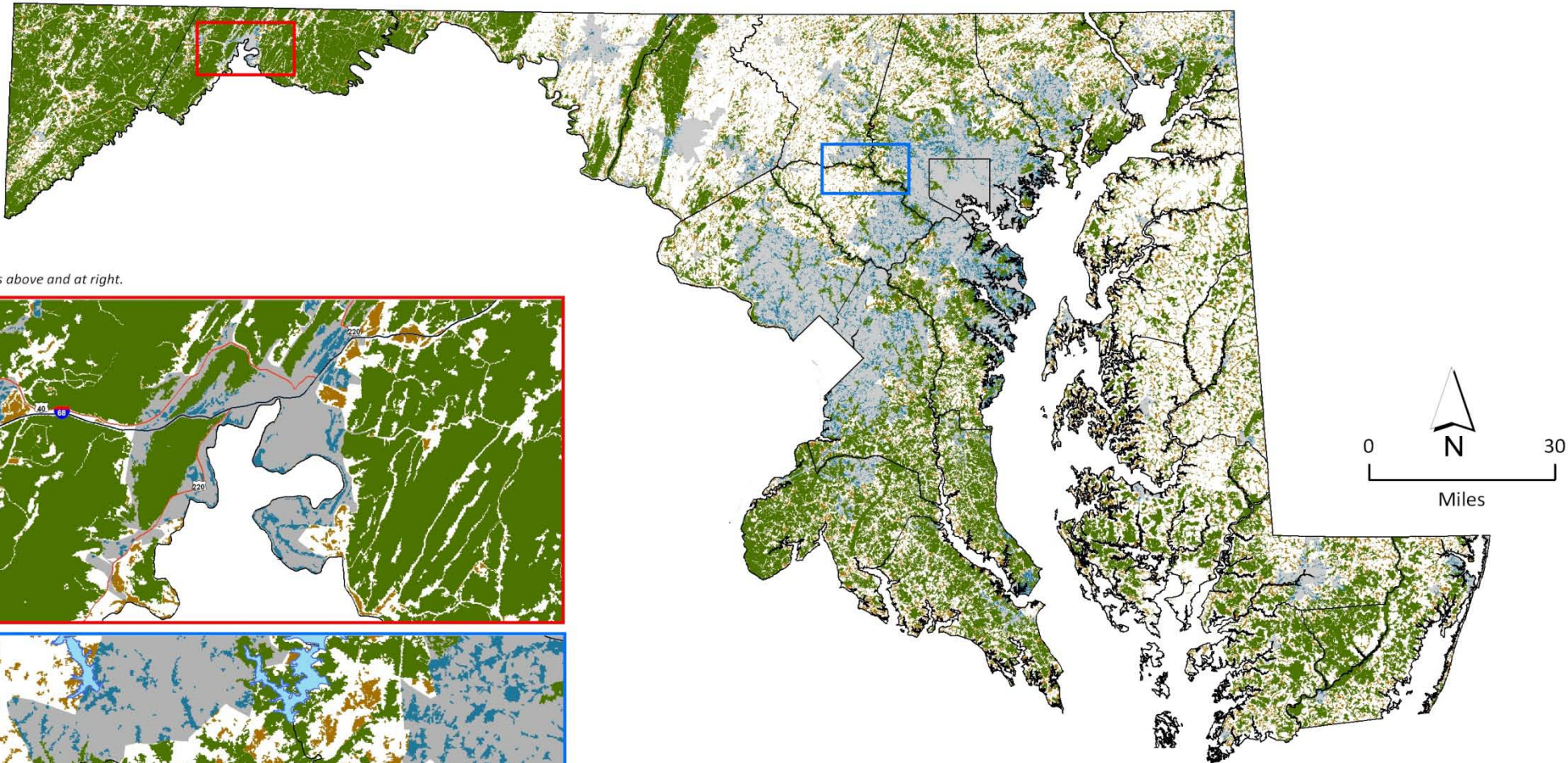
- Prioritize Forest Conservation
  - Adopt a green infrastructure approach to FCA
- Protect High Quality Forests
  - New planning requirements
- Offset All Sources of Forest Loss
  - Develop strategy to mitigate loss from sources currently exempt in FCA
- Encourage Stewardship
  - Incentives for forest landowners



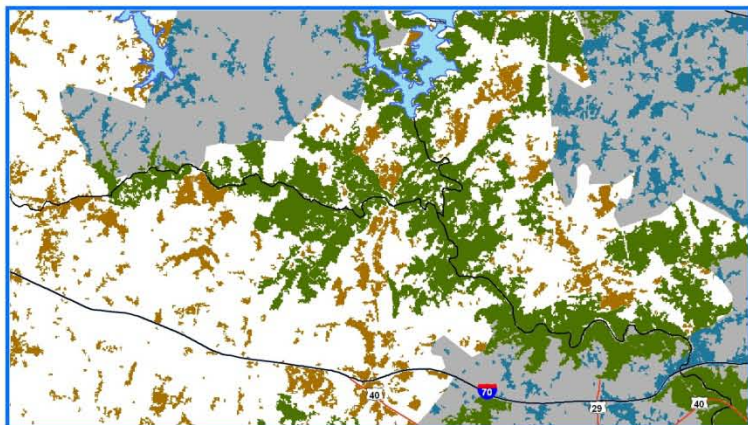
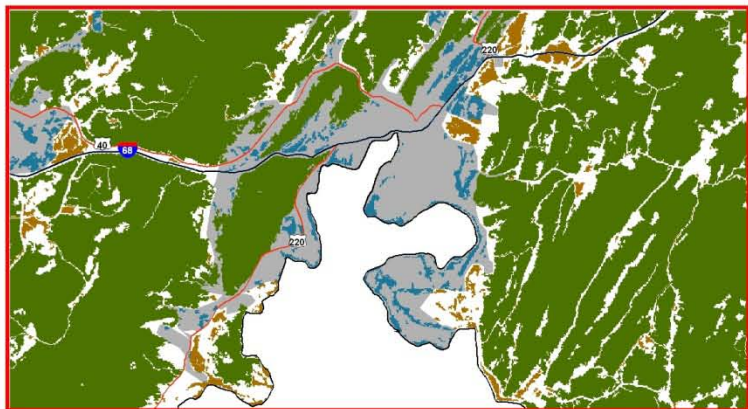


# MARYLAND NO NET LOSS OF FOREST PRIORITY AREAS

OCTOBER 2011



Insets above and at right.



### Legend

-  County Boundary
-  Forest Conservation Area (200 Acres Plus)
-  Urban Tree Canopy Areas
-  Woodland Conservation Areas
-  US Census Bureau Designated Urban Area





- Forest Conservation Areas
  - Forest Patches >200 acres
    - 73% of Maryland's forest
  - For every acre developed, mitigate four acres of forest
- Urban Tree Canopy Areas
  - All trees, woods, and forests in urban areas
    - 7% of Maryland's forest
  - Achieve and maintain 40% urban tree canopy cover
  - Two acres of required mitigation can be met with one acre



- Woodland Conservation Areas

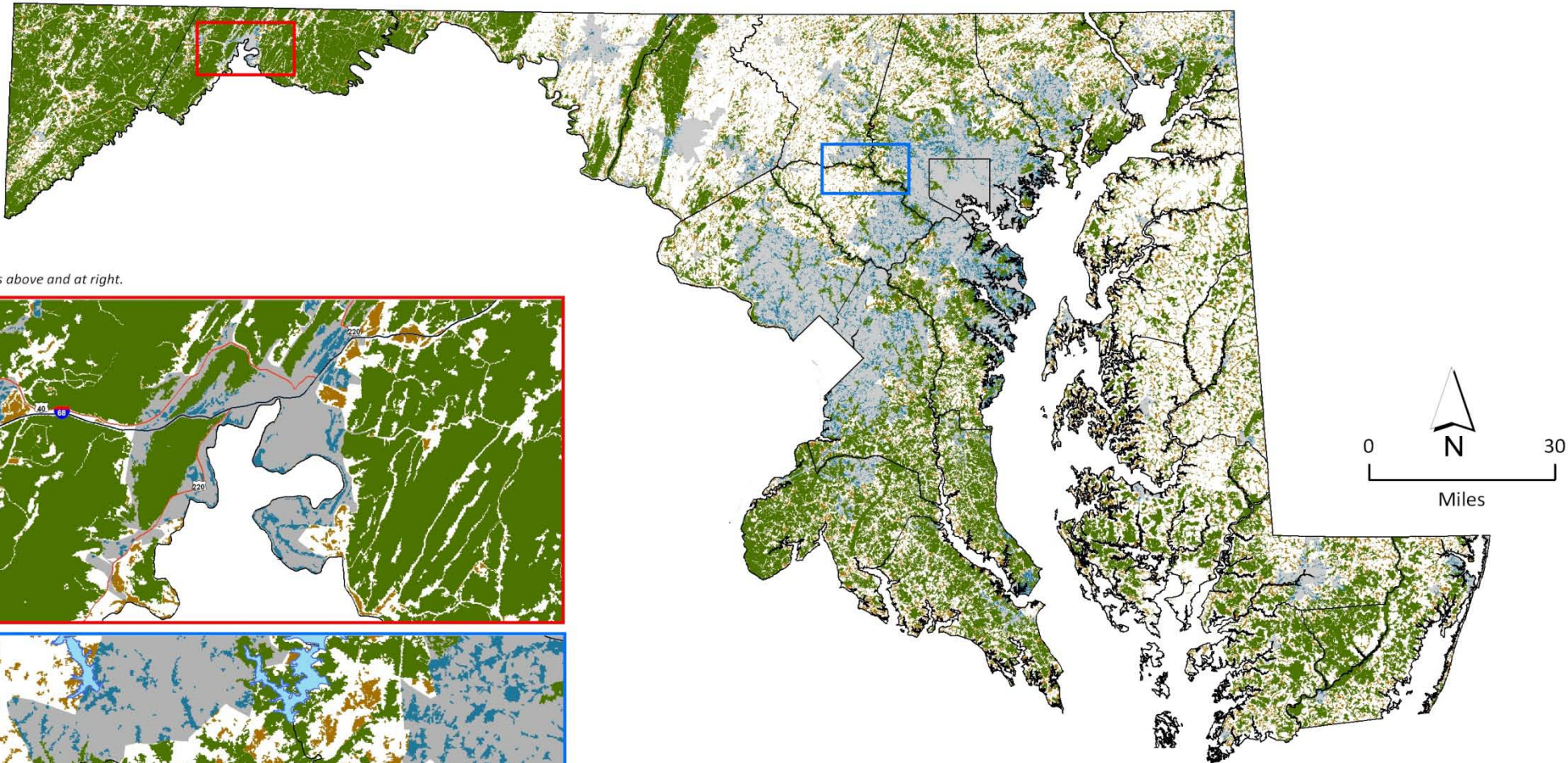
- All forest outside Forest Conservation and Urban Tree Canopy Areas
  - 20% of Maryland's forest
- Development will continue: avoid forest loss to the extent possible
- Development that can be sited anywhere should be mitigated with a one to one ratio
- Non-discretionary development should be mitigated at 0.75 acres per acre of forest that is converted



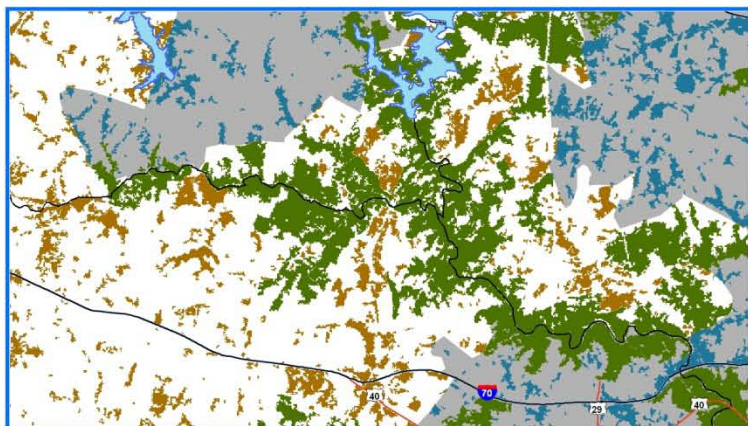
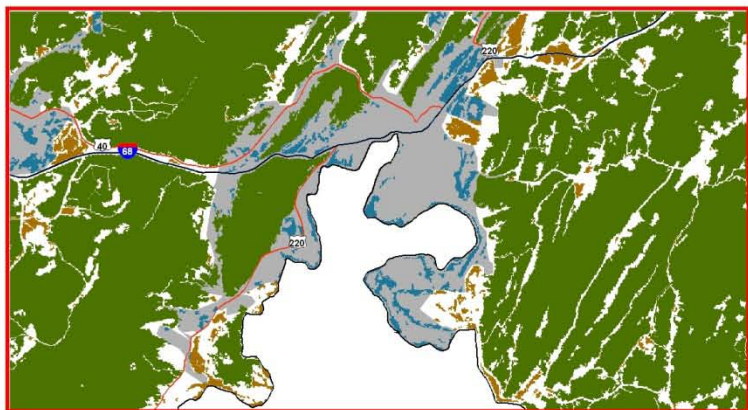


# MARYLAND NO NET LOSS OF FOREST PRIORITY AREAS

OCTOBER 2011



Insets above and at right.



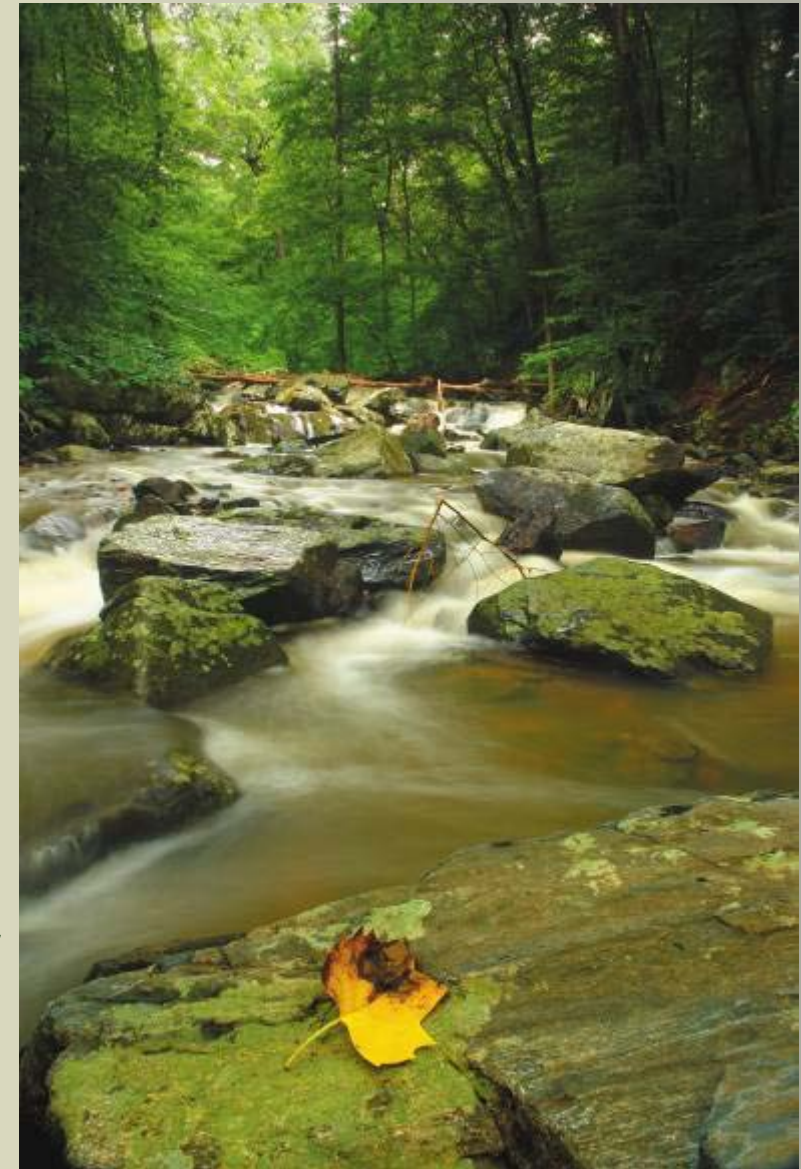
### Legend

-  County Boundary
-  Forest Conservation Area (200 Acres Plus)
-  Urban Tree Canopy Areas
-  Woodland Conservation Areas
-  US Census Bureau Designated Urban Area





- Require a new Models and Guidelines for Forest Resources
  - Forest Resource Assessment
  - Forest Vulnerability Assessment
- Require a Forest Resource Element
  - Similar to, but simpler than a Water Resource Element
  - Stimulate local forest conservation by encouraging U.S. EPA to credit “actual” forest cover as a BMP (i.e., planted forest)

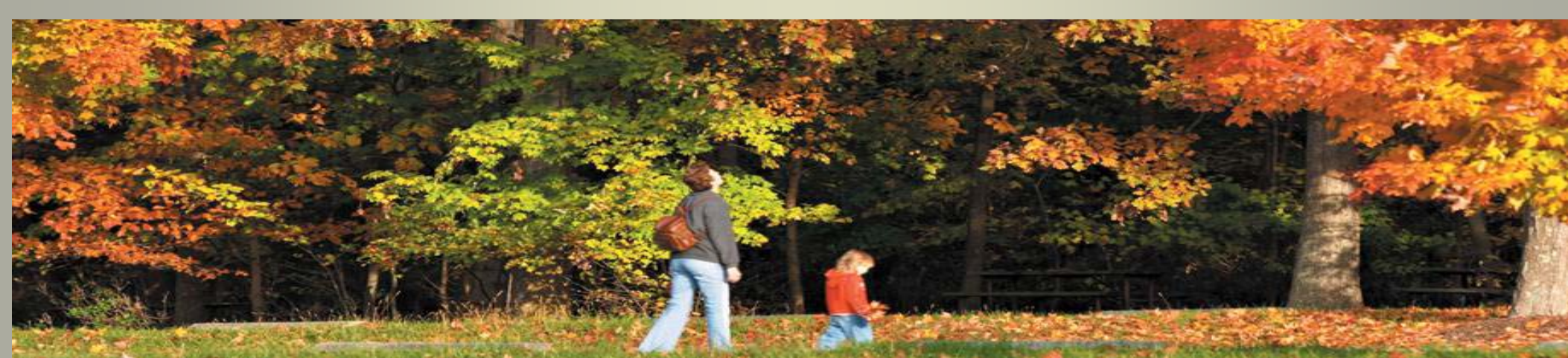


- Develop a mitigation requirement for existing exempt sources
  - Utility rights-of-way, mining, agriculture, etc.
- Assist local governments in the design and use of fee-in-lieu funds





- Encourage forest conservation by facilitating landowner involvement in third-party forest certification systems
- Provide technical and financial assistance for programs that promote the conversion of residential turf to trees
- Ensure landowner access to emerging markets through appropriate incentives in areas like wood biomass energy



- Need a consistent and reliable data source
  - Use imagery every three years to document net change
  - Baseline year is 2007





- Tangible options to “bend the curve”
- Comments?
- Final draft ready on 11/22



Advising the Department of Natural Resources on  
strategies to sustain Maryland's forests

Gary Allen, Chair

Eric Sprague, Vice-chair

Kim Finch

Al Goetzel

Connie Hoge

Don Outen

Gregory Purnell

Kenneth Roberts

Kirk Rodgers