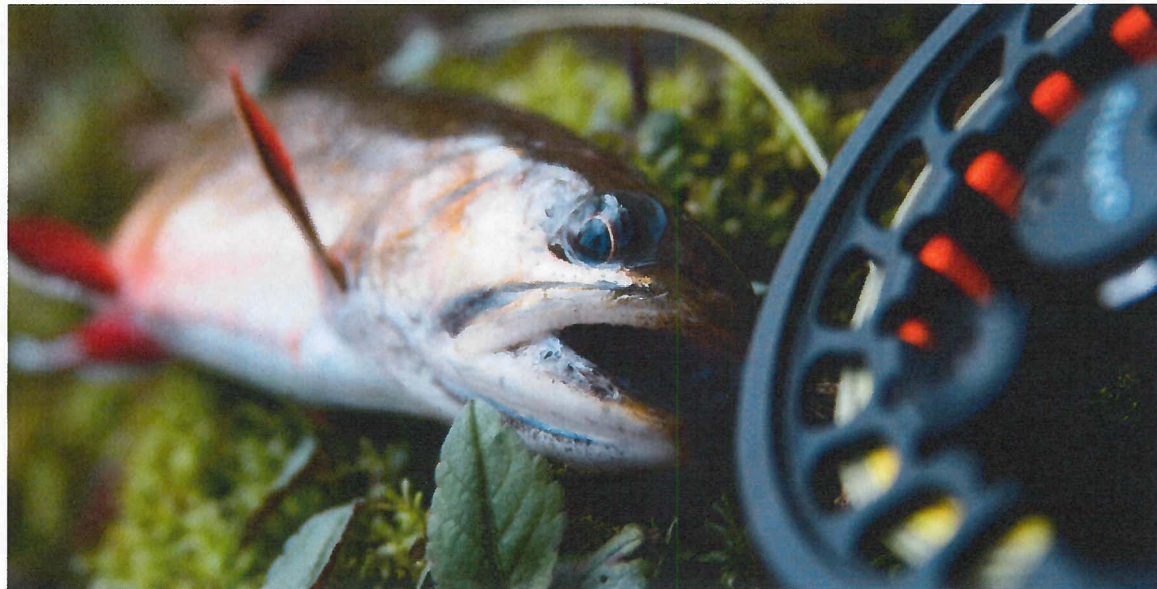


# 2014-2018 Brook Trout Sampling Schedule

*prepared for*

## **Western Region I**

Allegany and Garrett Counties



This document was produced as a sampling guideline for regional offices to ensure that all *known* Brook Trout streams in their regions are sampled on a five-year interval, as required by the Maryland Brook Trout Fishery Management Plan (FMP). The sampling of these streams should be performed in accordance with the Maryland Brook Trout Sampling Standard Operating Procedure (SOP) and under the methods defined there-in (see attachment A).



## Brook Trout Sites, 2014

	Sampled once in five year period
	Sampled more than once in a five year period
	Special project, such as Savage River Reg sites
	MBSS

River Basin	Watershed	County	Stream Name	LatitudeDD	LongitudeDD	Multi-Year?	Survey Type	Sampled By
YG	Buffalo Run	GA	Buffalo Run	39.65828	-79.44967		Zippin	MBSS
YG	Buffalo Run	GA	Laurel Run	39.68792	-79.44487		Zippin	MBSS
YG	Buffalo Run	GA	Little Buffalo Run	39.65004	-79.44658		Zippin	MBSS
YG	Casselman	GA	Alexander Run	39.65810	-79.22125		Qualitative	Regional
YG	Casselman	GA	Big Laurel Run	39.65646	-79.15854	Bi, 2014	Zippin	Regional
YG	Casselman	GA	Big Shade Run	39.71373	-79.16748		Zippin	Regional
YG	Casselman	GA	Casselman River, UT at River Road	39.70754	-79.10945		Zippin	Regional
YG	Casselman	GA	Crab Run	39.71405	-79.13667		Zippin	Regional
YG	Casselman	GA	Cunningham Swamp Tributary	39.57437	-79.24892		Zippin	MBSS
YG	Casselman	GA	Little Laurel Run	39.63971	-79.16825	Bi, 2014	Zippin	Regional
YG	Casselman	GA	North Branch Casselman	39.64083	-79.22528		Zippin	Regional
YG	Casselman	GA	North Branch, UT at Resh Hill Road	39.65010	-79.20435		Zippin	MBSS
YG	Casselman	GA	Piney Creek	39.71442	-78.94908		Zippin	BKT Staff
YG	Casselman	GA	Red Run	39.70147	-79.06127		Zippin	BKT Staff
YG	Casselman	GA	South Branch Casselman	39.61108	-79.19225	Bi, 2014	Zippin	Regional
YG	Casselman	GA	Spiker Run	39.68991	-79.18191	Bi, 2014	Zippin	Regional
YG	Casselman	GA	Tarkiln Run	39.67408	-79.21111		Qualitative	Regional
YG	Casselman	GA	Two Mile Run	39.69432	-79.04640		Zippin	BKT Staff
YG	Casselman	GA	UT at Maple Grove Road	39.67400	-79.16718		Qualitative	Regional
YG	Mill Run	GA	Chubb Run	39.71829	-79.34721		Zippin	Regional
YG	Mill Run	GA	Cove Run	39.69777	-79.33029		Zippin	Regional
YG	Mill Run	GA	Mill Run	39.71472	-79.31980		Zippin	Regional
YG	Mill Run	GA	Mill Run , UT	39.71862	-79.28232		Zippin	Regional
YG	Piney Creek	GA	Piney Creek, UT	39.70763	-78.98464		Qualitative	BKT Staff
YG	White's Creek (PA)	GA	Buck's Run	39.71247	-79.24572		Zippin	BKT Staff
YG	White's Creek (PA)	GA	Buck's Run, UT	39.71578	-79.26093		Zippin	BKT Staff
YG	White's Creek (PA)	GA	Puzzley Run	39.70783	-79.23092		Zippin	BKT Staff
YG	White's Creek (PA)	GA	UT to Lake Louise	39.68711	-79.23214		Zippin	Regional
YG	Youghiogheny	GA	Laurel Run	39.62685	-79.45838		Zippin	Regional
YG	Youghiogheny	GA	UT at Kendall	39.63196	-79.40643		Zippin	Regional



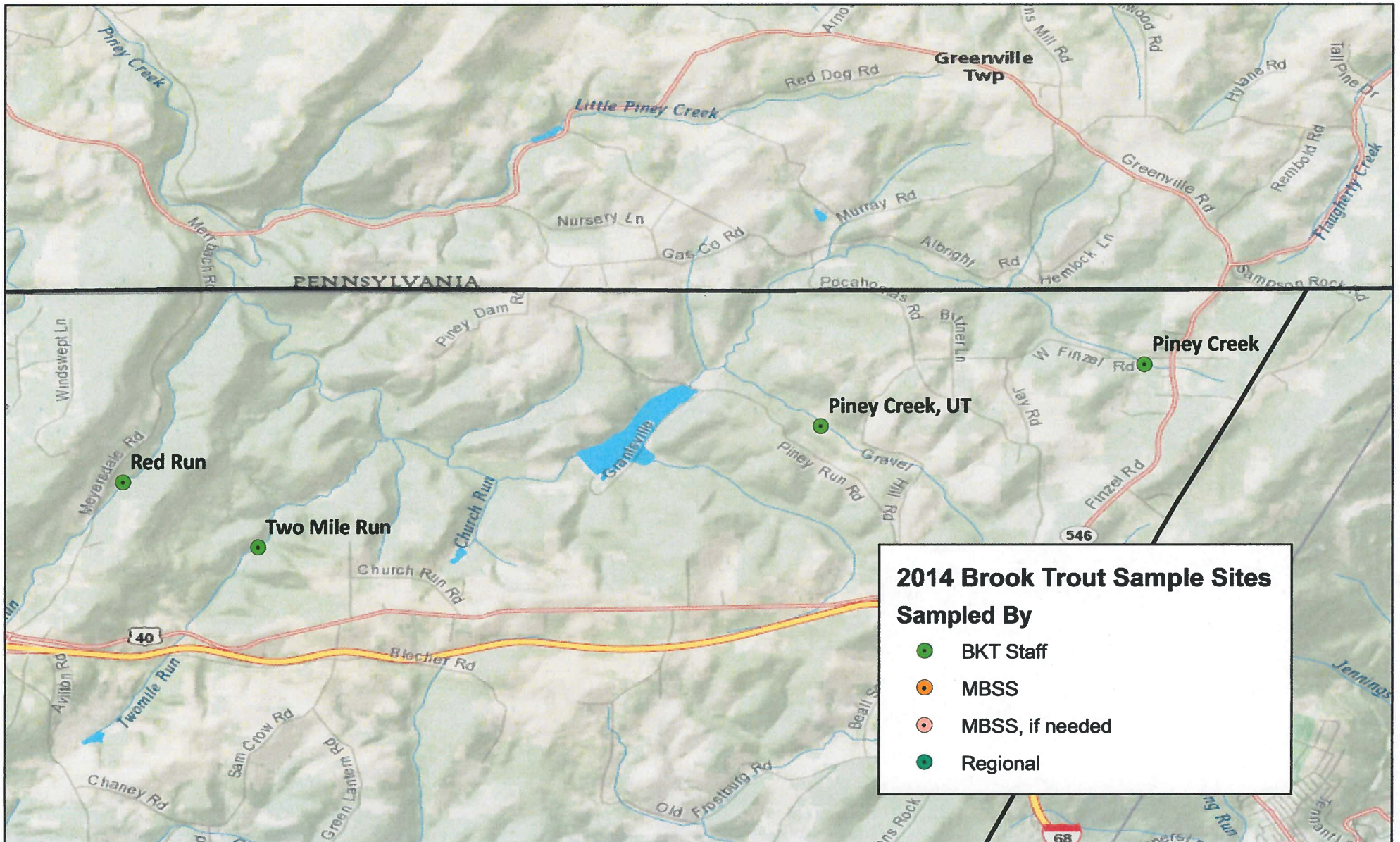
YG	Youghiogheny Res.	GA	UT to Yough Lake	39.68707	-79.36979		Zippin	MBSS, if needed
YG	Youghiogheny Res.	GA	UT2 to Yough Lake	39.69687	-79.38193		Zippin	MBSS, if needed
YG	Youghiogheny	GA	Muddy Creek	39.52372	-79.45293	Annual, 2014	Zippin	Regional
YG	Hoyes Run	GA	Fork Run	39.53512	-79.38611	Annual, 2014	Zippin	Regional
YG	Youghiogheny	GA	Hoyes Run	39.54747	-79.39253	Annual, 2014	Zippin	Regional
YG	Bear Creek	GA	Cove Run	39.67332	-79.30340	Annual, 2014	Zippin	Regional
NBP	Savage River	GA	Savage River, mainstem below dam	39.49687	-79.10503	Annual, 2014	Zippin	BKT Staff/Regional Staff
NBP	Savage River	GA	Lower Savage, UT	39.51103	-79.10840	2014	Zippin	Regional

**\*\*\*The following are Regulation Sites in the Savage River and will be sampled annually through 2016\*\*\***

NBP	Savage River	GA	Upper Savage River, High Access	TBD	TBD	Annual, 2014	Zippin	BKT Staff/Regional
NBP	Savage River	GA	Upper Savage River, Medium Access	TBD	TBD	Annual, 2014	Zippin	BKT Staff/Regional
NBP	Savage River	GA	Upper Savage River, Low Access	TBD	TBD	Annual, 2014	Zippin	BKT Staff/Regional
NBP	Savage River	GA	Crabtree Creek, Medium Access	TBD	TBD	Annual, 2014	Zippin	BKT Staff
NBP	Savage River	GA	Crabtree Creek, Low Access	TBD	TBD	Annual, 2014	Zippin	BKT Staff
NBP	Savage River	GA	Middlefork Creek, High Access	TBD	TBD	Annual, 2014	Zippin	BKT Staff
NBP	Savage River	GA	Middlefork Creek, Medium Access	TBD	TBD	Annual, 2014	Zippin	BKT Staff
NBP	Savage River	GA	Middlefork Creek, Low Access	TBD	TBD	Annual, 2014	Zippin	BKT Staff
NBP	Savage River	GA	Big Run, High Access	TBD	TBD	Annual, 2014	Zippin	BKT Staff
NBP	Savage River	GA	Big Run, Medium Access	TBD	TBD	Annual, 2014	Zippin	BKT Staff
NBP	Savage River	GA	Big Run, Low Access	TBD	TBD	Annual, 2014	Zippin	BKT Staff
NBP	Savage River	GA	Monroe Run, High Access	TBD	TBD	Annual, 2014	Zippin	BKT Staff
NBP	Savage River	GA	Monroe Run, Medium Access	TBD	TBD	Annual, 2014	Zippin	BKT Staff
NBP	Savage River	GA	Monroe Run, Low Access	TBD	TBD	Annual, 2014	Zippin	BKT Staff
NBP	Savage River	GA	Poplar Lick, High Access	TBD	TBD	Annual, 2014	Zippin	BKT Staff
NBP	Savage River	GA	Poplar Lick, Medium Access	TBD	TBD	Annual, 2014	Zippin	BKT Staff
NBP	Savage River	GA	Poplar Lick, Low Access	TBD	TBD	Annual, 2014	Zippin	BKT Staff
NBP	Savage River	GA	Blue Lick, High Access	TBD	TBD	Annual, 2014	Zippin	BKT Staff
NBP	Savage River	GA	Blue Lick, Medium Access	TBD	TBD	Annual, 2014	Zippin	BKT Staff
NBP	Savage River	GA	Blue Lick, Low Access	TBD	TBD	Annual, 2014	Zippin	BKT Staff
NBP	Savage River	GA	Little Savage River, High Access	TBD	TBD	Annual, 2014	Zippin	BKT Staff
NBP	Savage River	GA	Little Savage River, Medium Access	TBD	TBD	Annual, 2014	Zippin	BKT Staff
NBP	Savage River	GA	Little Savage River, Low Access	TBD	TBD	Annual, 2014	Zippin	BKT Staff

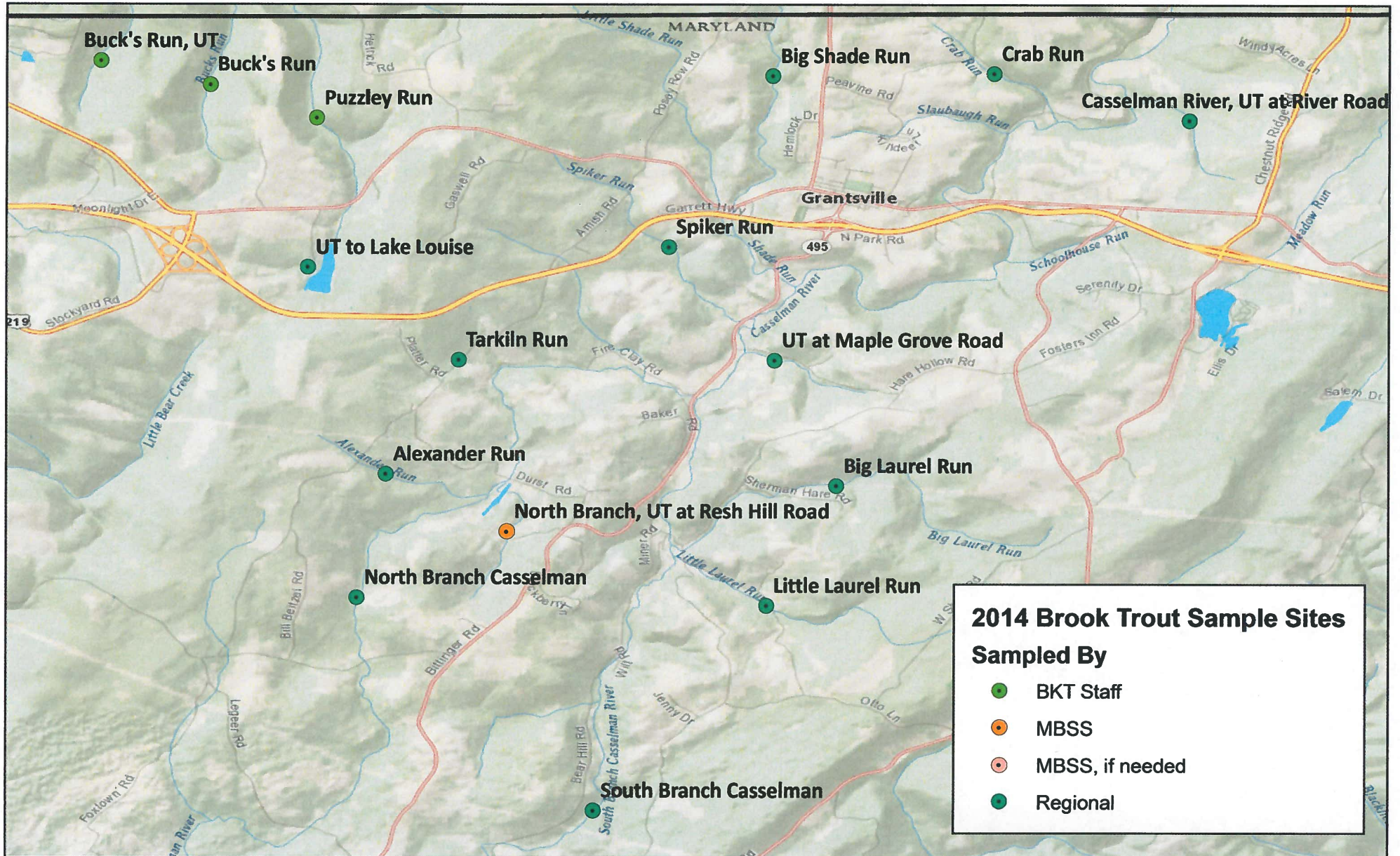


# 2014 BKT Sampling Piney Creek Watershed



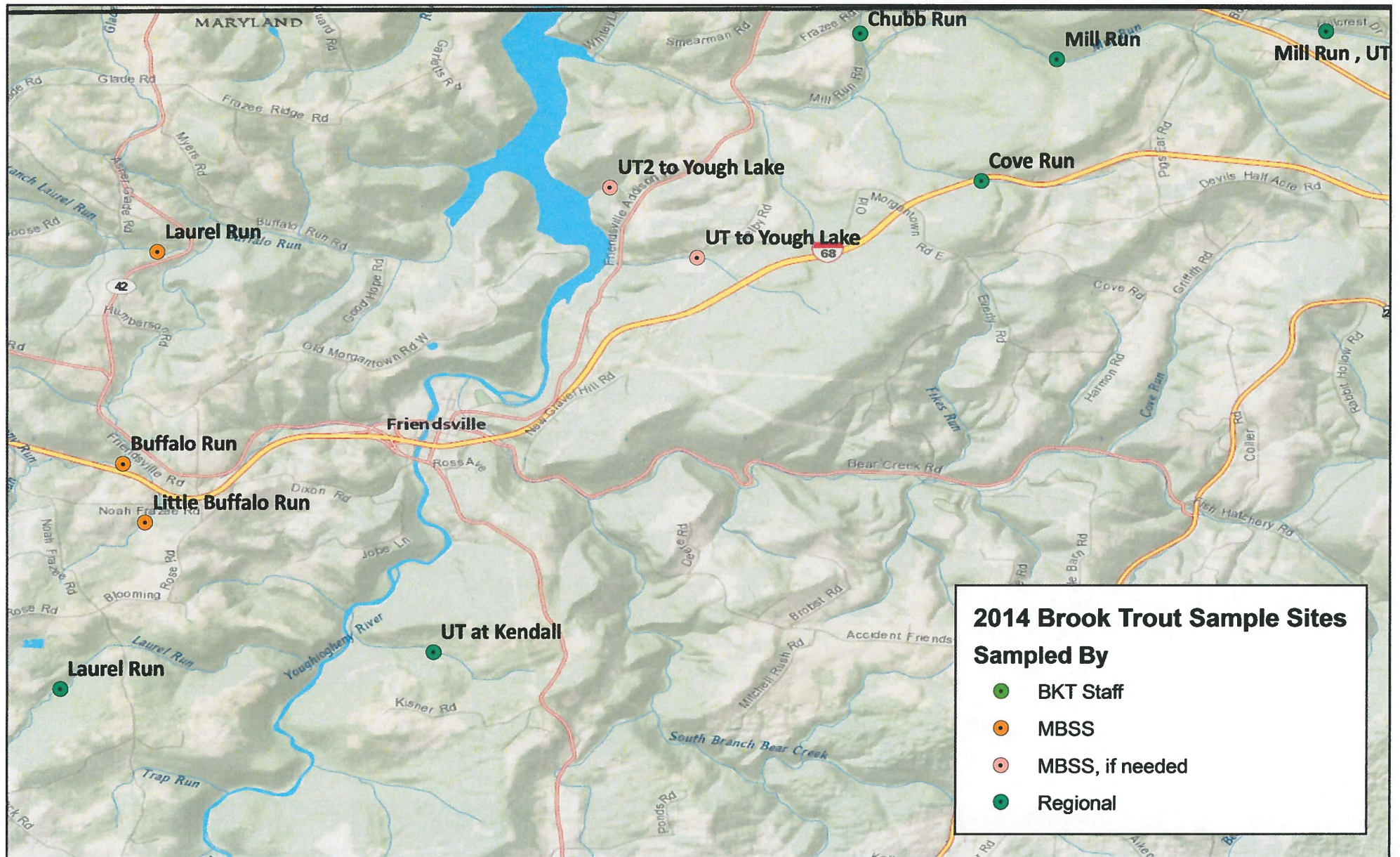


# 2014 BKT Sampling Casselman River Watershed





# 2014 BKT Sampling Buffalo Run/Youg Res. Watersheds





## Brook Trout Sites, 2015

	Sampled once in five year period
	Sampled more than once in a five year period
	Special project, such as Savage River Reg sites
	MBSS

River Basin	Watershed	County	Stream Name	LatitudeD D	LongitudeD D	Multi-Year?	Survey Type	Sampled By
YG	Youghiogheny	GA	Sand Spring Run	39.26498	-79.46953		Zippin	MBSS?
YG	Youghiogheny	GA	Cherry Creek, Headwaters	39.31282	-79.43295		Zippin	MBSS?
YG	Youghiogheny	GA	Cherry Creek, UT at Shady Dell Road	39.33698	-79.40600		Zippin	MBSS?
YG	Youghiogheny	GA	Youghiogheny River at Underwood Road	39.35993	-79.46631		Zippin	Regional
YG	Little Youghiogheny	GA	Block Run	39.40030	-79.31093		Zippin	Regional
YG	Block Run	GA	Block Run, UT at Decost Road	39.40781	-79.30160		Zippin	Regional
YG	Youghiogheny	GA	L. Youghiogheny River at Boiling Spring Road	39.42229	-79.32192		Zippin	Regional
YG	Little Youghiogheny	GA	Little Youghiogheny	39.42300	-79.28917		Zippin	Regional
YG	Youghiogheny	GA	Millers Run	39.45463	-79.39881		Qualitative	Regional
YG	Youghiogheny	GA	Roaring Run	39.45580	-79.43063		Zippin	Regional
YG	Youghiogheny	GA	Weimers Run	39.46126	-79.40961		Zippin	Regional
YG	Youghiogheny	GA	Herrington Run	39.46424	-79.43712		Zippin	Regional
YG	Youghiogheny	GA	Herrington Run, UT downstream of Res.	39.46855	-79.43171		Zippin	Regional
YG	Deep Creek Lake	GA	Pawn Run	39.47493	-79.33279		Qualitative	MBSS ?
YG	Youghiogheny	GA	Deep Creek	39.50926	-79.40360		Zippin	Regional
YG	Deep Creek Lake	GA	Smith Run	39.51821	-79.34597		Zippin	Regional
YG	Deep Creek Lake	GA	Meadow Mt. Run	39.52333	-79.26628		Zippin	Regional
YG	Youghiogheny	GA	Ned Run	39.54456	-79.47264		Qualitative	Regional
YG	Youghiogheny	GA	Ginseng Run	39.57697	-79.38717		Zippin	Regional
YG	Youghiogheny	GA	Gap Run	39.59175	-79.39010		Zippin	Regional
YG	South Branch Bear Creek	GA	Stony Brook	39.61300	-79.38510		Zippin	Regional
YG	Bear Creek	GA	South Branch Bear Creek	39.61609	-79.36654		Zippin	Regional
YG	Bear Creek	GA	Bear Creek, UT	39.64658	-79.34173		Zippin	Regional
YG	Bear Creek	GA	Little Bear Creek	39.65460	-79.26433		Zippin	Regional
YG	Bear Creek	GA	Bear Creek	39.65515	-79.33408		Zippin	MBSS
YG	Bear Creek	GA	L. Bear Creek, UT	39.66595	-79.27680		Zippin	Regional
YG	Bear Creek	GA	Fikes Run	39.67187	-79.33420		Zippin	Regional
YG	Bear Creek	GA	Cove Run	39.67332	-79.30340	Annual, 2014	Zippin	Regional
YG	Youghiogheny	GA	Muddy Creek	39.52372	-79.45293	Annual, 2014	Zippin	Regional
YG	Hoyes Run	GA	Fork Run	39.53512	-79.38611	Annual, 2014	Zippin	Regional



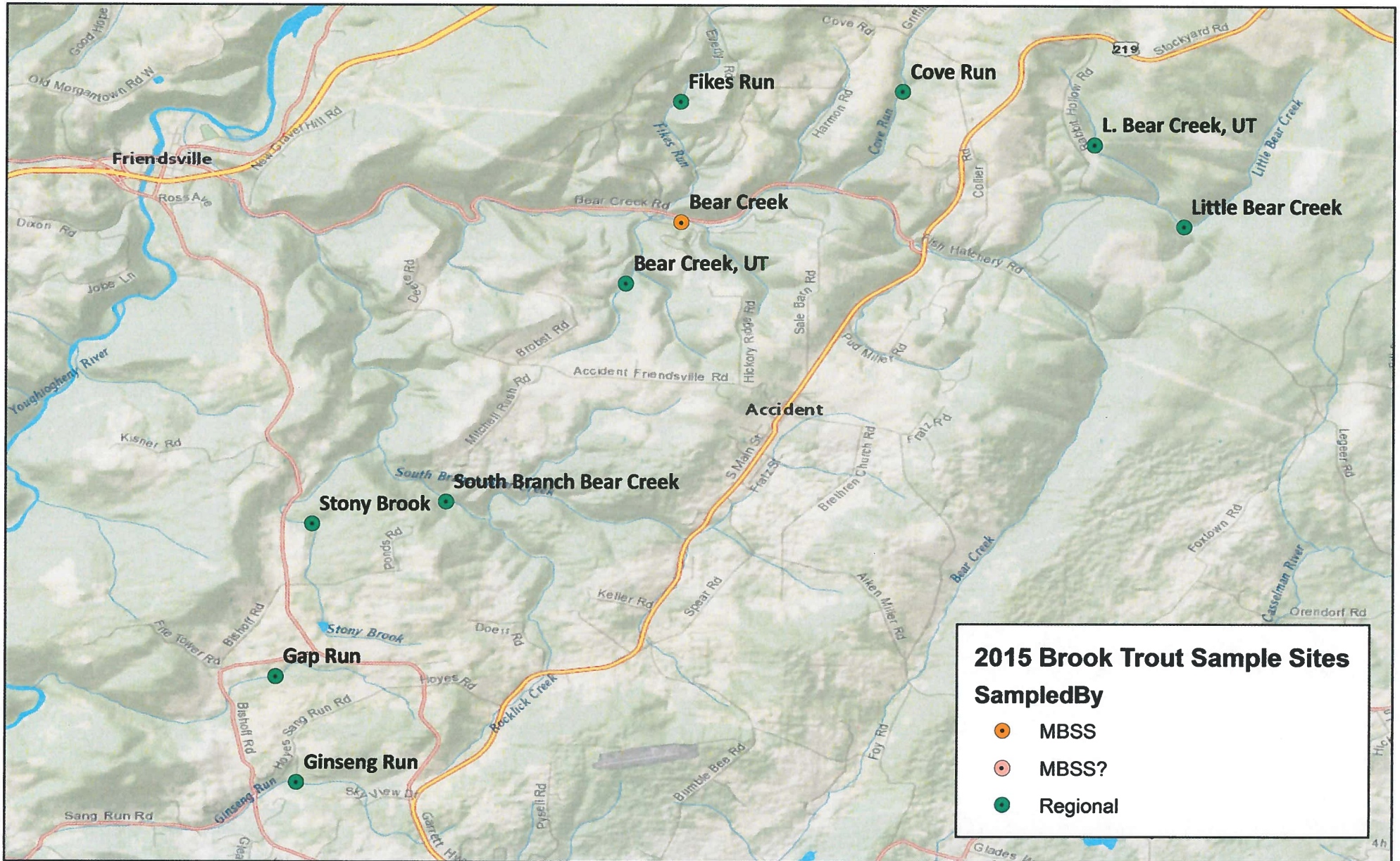
YG	Youghiogheny	GA	Hoyes Run	39.54747	-79.39253	Annual, 2014	Zippin	Regional
YG	Bear Creek	GA	Cove Run	39.67332	-79.30340	Annual, 2014	Zippin	Regional
NBP	Savage River	GA	Savage River, mainstem below dam	39.49687	-79.10503	Annual, 2014	Zippin	BKT Staff/Regional Staff

**\*\*\*The following are Regulation Sites in the Savage River and will be sampled annually through 2016\*\*\***

NBP	Savage River	GA	Upper Savage River, High Access	TBD	TBD	Annual, 2014	Zippin	BKT Staff/Regional
NBP	Savage River	GA	Upper Savage River, Medium Access	TBD	TBD	Annual, 2014	Zippin	BKT Staff/Regional
NBP	Savage River	GA	Upper Savage River, Low Access	TBD	TBD	Annual, 2014	Zippin	BKT Staff/Regional
NBP	Savage River	GA	Crabtree Creek, Medium Access	TBD	TBD	Annual, 2014	Zippin	BKT Staff
NBP	Savage River	GA	Crabtree Creek, Low Access	TBD	TBD	Annual, 2014	Zippin	BKT Staff
NBP	Savage River	GA	Middlefork Creek, High Access	TBD	TBD	Annual, 2014	Zippin	BKT Staff
NBP	Savage River	GA	Middlefork Creek, Medium Access	TBD	TBD	Annual, 2014	Zippin	BKT Staff
NBP	Savage River	GA	Middlefork Creek, Low Access	TBD	TBD	Annual, 2014	Zippin	BKT Staff
NBP	Savage River	GA	Big Run, High Access	TBD	TBD	Annual, 2014	Zippin	BKT Staff
NBP	Savage River	GA	Big Run, Medium Access	TBD	TBD	Annual, 2014	Zippin	BKT Staff
NBP	Savage River	GA	Big Run, Low Access	TBD	TBD	Annual, 2014	Zippin	BKT Staff
NBP	Savage River	GA	Monroe Run, High Access	TBD	TBD	Annual, 2014	Zippin	BKT Staff
NBP	Savage River	GA	Monroe Run, Medium Access	TBD	TBD	Annual, 2014	Zippin	BKT Staff
NBP	Savage River	GA	Monroe Run, Low Access	TBD	TBD	Annual, 2014	Zippin	BKT Staff
NBP	Savage River	GA	Poplar Lick, High Access	TBD	TBD	Annual, 2014	Zippin	BKT Staff
NBP	Savage River	GA	Poplar Lick, Medium Access	TBD	TBD	Annual, 2014	Zippin	BKT Staff
NBP	Savage River	GA	Poplar Lick, Low Access	TBD	TBD	Annual, 2014	Zippin	BKT Staff
NBP	Savage River	GA	Blue Lick, High Access	TBD	TBD	Annual, 2014	Zippin	BKT Staff
NBP	Savage River	GA	Blue Lick, Medium Access	TBD	TBD	Annual, 2014	Zippin	BKT Staff
NBP	Savage River	GA	Blue Lick, Low Access	TBD	TBD	Annual, 2014	Zippin	BKT Staff
NBP	Savage River	GA	Little Savage River, High Access	TBD	TBD	Annual, 2014	Zippin	BKT Staff
NBP	Savage River	GA	Little Savage River, Medium Access	TBD	TBD	Annual, 2014	Zippin	BKT Staff
NBP	Savage River	GA	Little Savage River, Low Access	TBD	TBD	Annual, 2014	Zippin	BKT Staff

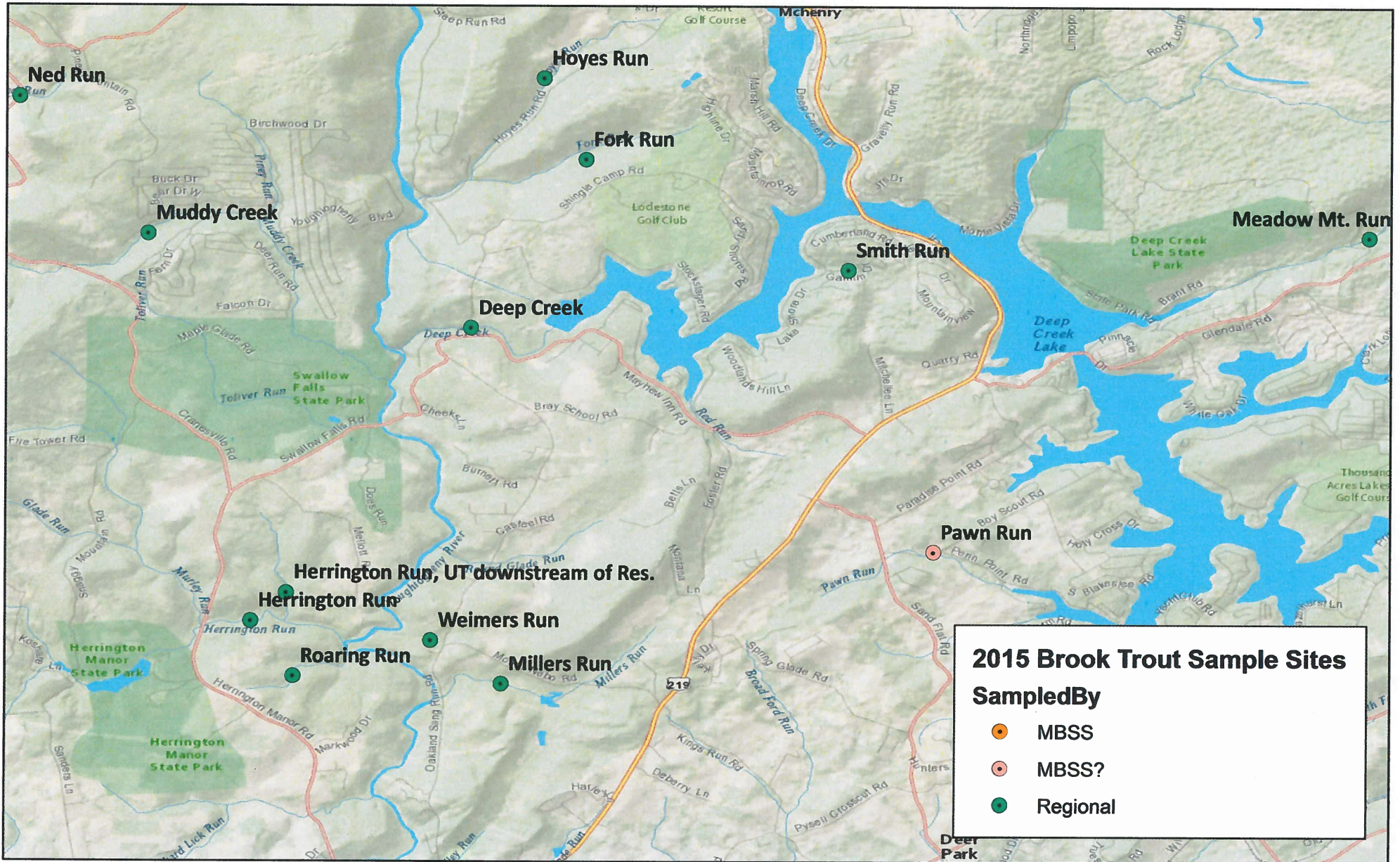


# 2015 BKT Sampling Bear Creek/Lower Youghigheny River



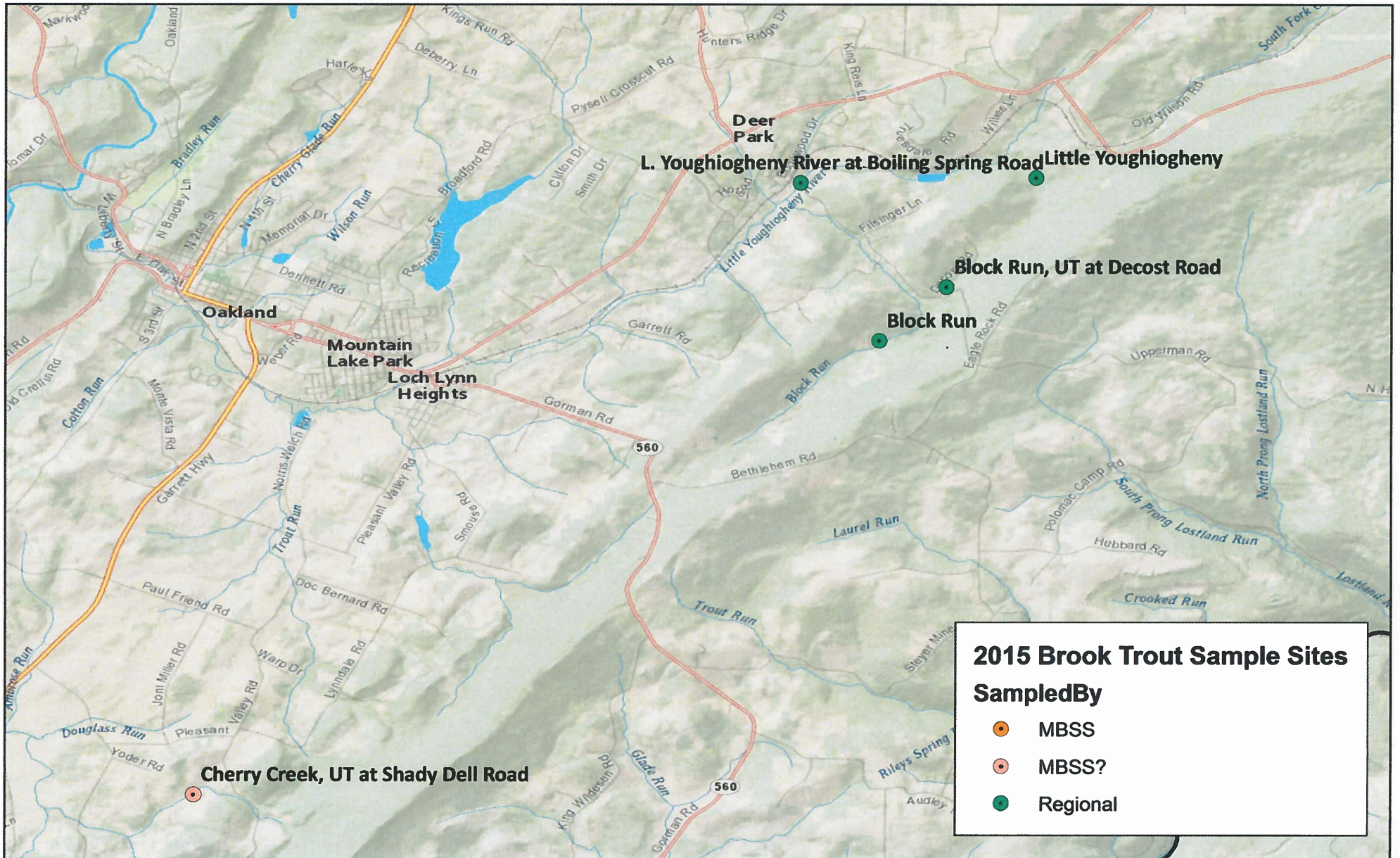


# 2015 BKT Sampling Herrington Run/Deep Creek Lake



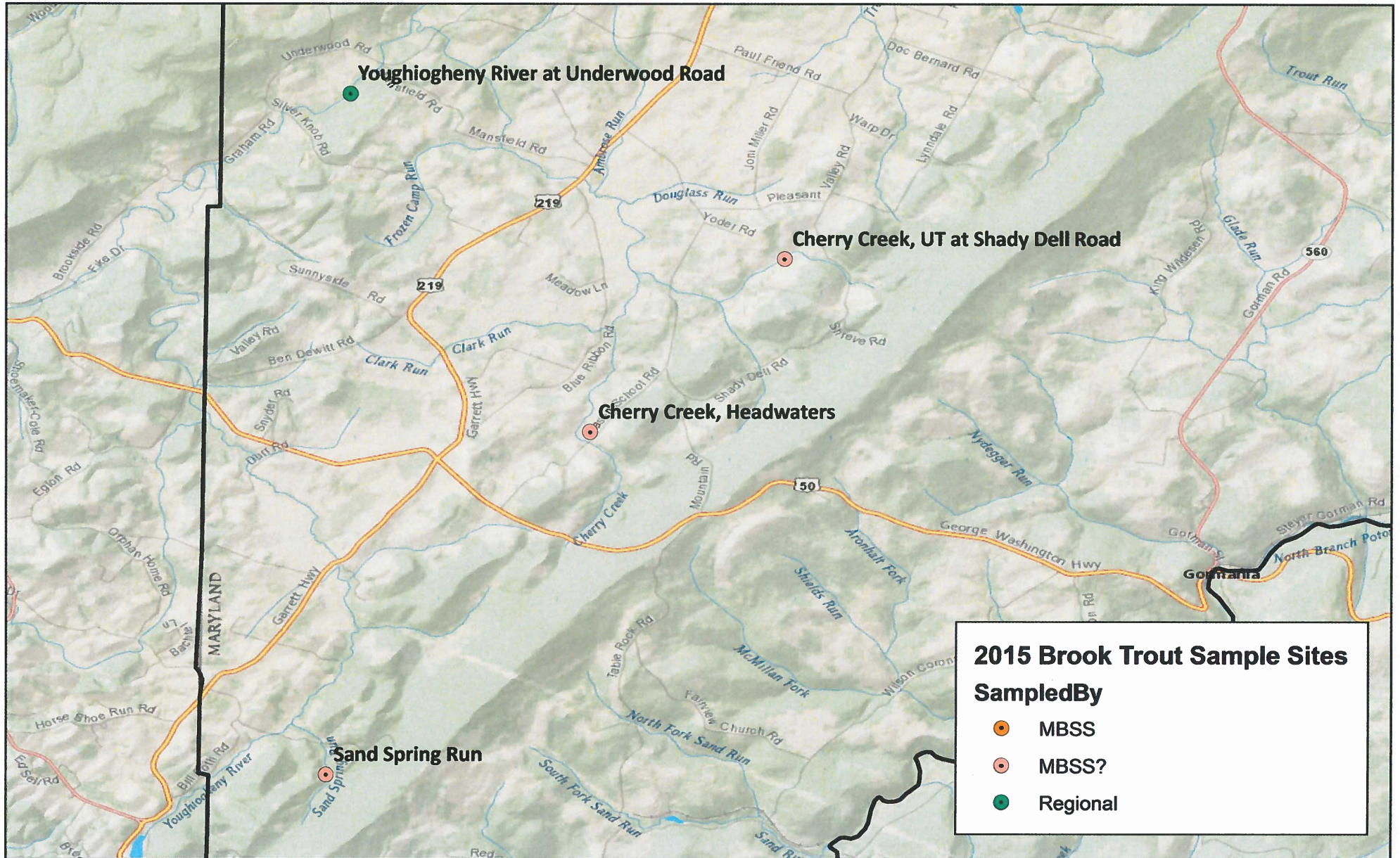


# 2015 BKT Sampling Little Youghiogheny River





# 2015 BKT Sampling Upper Youghiogheny River





## Brook Trout Sites, 2016

	Sampled once in five year period
	Sampled more than once in a five year period
	Special project, such as Savage River Reg sites
	MBSS

River Basin	Watershed	County	Stream Name	LatitudeDD	LongitudeDD	Multi-Year?	Survey Type	Sampled By
NBP	Shields Run	GA	Shields Run	39.28233	-79.39270		Zippin	Regional
NBP	Shields Run	GA	McMillan Fork	39.28407	-79.41137		Zippin	Regional
NBP	Shields Run	GA	Aronhalt Fork	39.29332	-79.39008		Zippin	Regional
NBP	Glade Run	GA	Glade Run	39.31011	-79.32992		Zippin	Regional
NBP	Nydeggar Run	GA	Upper Left Fork	39.31181	-79.38461		Zippin	MBSS?
NBP	Steyer Run	GA	Steyer Run	39.31732	-79.30490		Zippin	Regional
NBP	Glade Run	GA	Glade Run, UT	39.32279	-79.32328		Zippin	Regional
NBP	Laurel Run	GA	Riley Spring Run	39.34107	-79.29623		Zippin	Regional
NBP	Laurel Run	GA	Laurel Run	39.34797	-79.28507		Zippin	Regional
NBP	Laurel Run	GA	Trout Run	39.35347	-79.31908		Zippin	Regional
NBP	North Branch Potomac River	GA	Crooked Run	39.35837	-79.26665		Zippin	Regional
NBP	Lostland Run	GA	Lostland Run	39.36647	-79.24692		Zippin	Regional
NBP	Lostland Run	GA	South Prong Lostland Run, UT	39.37894	-79.28355		Zippin	Regional
NBP	Lostland Run	GA	South Prong Lostland Run	39.38007	-79.27460		Zippin	Regional
NBP	Short Run	GA	Short Run	39.38292	-79.22008		Zippin	Regional
NBP	Lostland Run	GA	North Prong Lostland	39.39192	-79.25665		Zippin	Regional
NBP	Wolfden Run	GA	Wolfden Run	39.39537	-79.21013		Zippin	MBSS?
NBP	Wolfden Run	GA	Wolfden Run, UT	39.40472	-79.21647		Zippin	MBSS?
NBP	Elklick Run	GA	Elklick Run	39.44090	-79.15360		Zippin	MBSS?
NBP	Folly Run	GA	Folly Run	39.45205	-79.13875		Zippin	Regional
NBP	Laurel Run	GA	Laurel Run, UT at Chestnut Grove Road	39.47154	-79.12795		Zippin	MBSS?
NBP	Laurel Run	GA	Laurel Run	39.47808	-79.11815		Zippin	Regional
YG	Youghiogheny	GA	Muddy Creek	39.52372	-79.45293	Annual, 2014	Zippin	Regional
YG	Hoyes Run	GA	Fork Run	39.53512	-79.38611	Annual, 2014	Zippin	Regional
YG	Youghiogheny	GA	Hoyes Run	39.54747	-79.39253	Annual, 2014	Zippin	Regional
YG	Bear Creek	GA	Cove Run	39.67332	-79.30340	Annual, 2014	Zippin	Regional
YG	Casselman	GA	Big Laurel Run	39.65646	-79.15854	Bi, 2014	Zippin	Regional
YG	Casselman	GA	Little Laurel Run	39.63971	-79.16825	Bi, 2014	Zippin	Regional
YG	Casselman	GA	South Branch Casselman	39.61108	-79.19225	Bi, 2014	Zippin	Regional
YG	Casselman	GA	Spiker Run	39.68991	-79.18191	Bi, 2014	Zippin	Regional



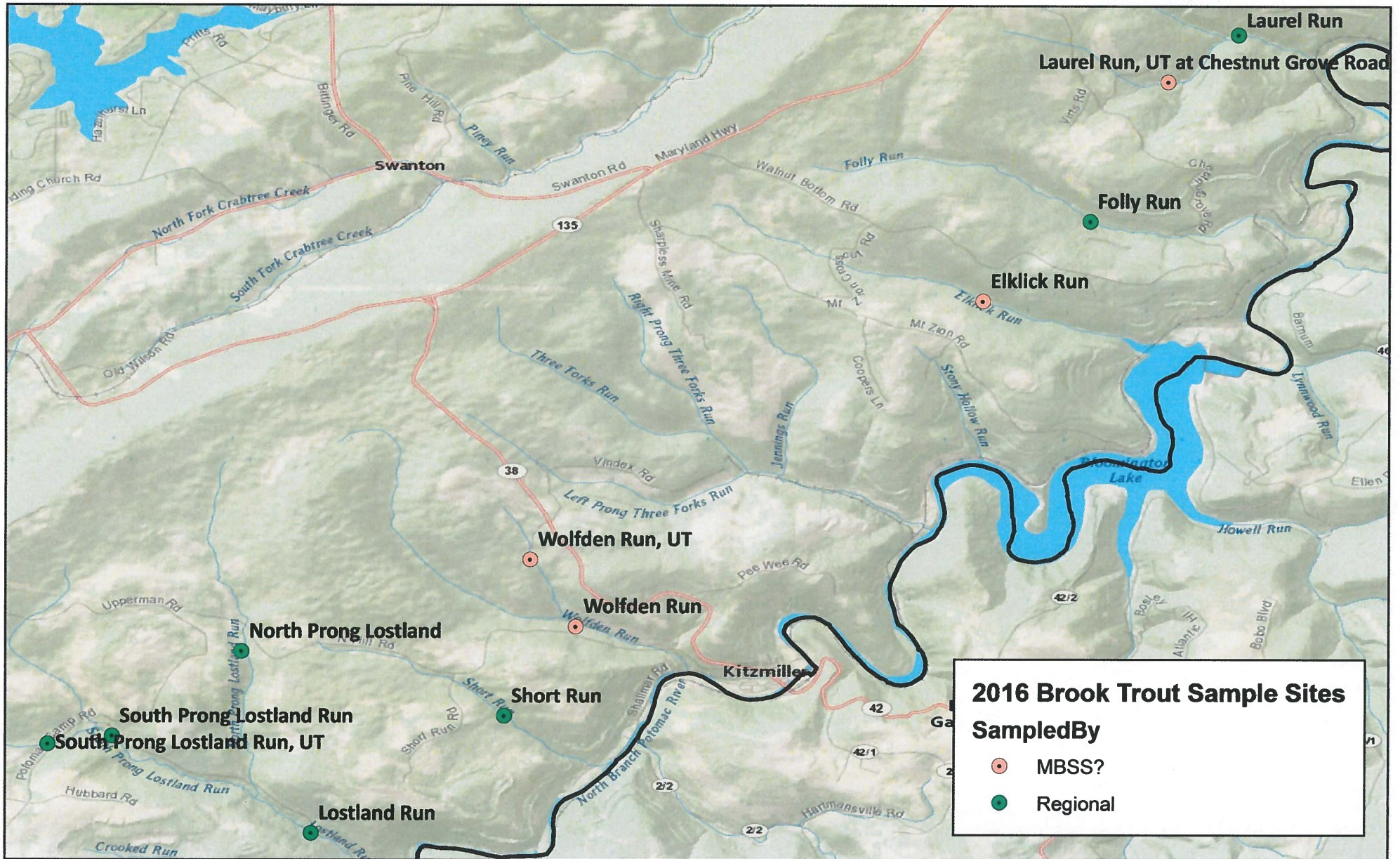
NBP	Savage River	GA	Savage River, mainstem below dam	39.49687	-79.10503	Annual, 2014	Zippin	BKT Staff/Regional Staff
-----	--------------	----	----------------------------------	----------	-----------	--------------	--------	--------------------------

**\*\*\*The following are Regulation Sites in the Savage River and will be sampled annually through 2016\*\*\***

NBP	Savage River	GA	Upper Savage River, High Access	TBD	TBD	Annual, 2014	Zippin	BKT Staff/Regional
NBP	Savage River	GA	Upper Savage River, Medium Access	TBD	TBD	Annual, 2014	Zippin	BKT Staff/Regional
NBP	Savage River	GA	Upper Savage River, Low Access	TBD	TBD	Annual, 2014	Zippin	BKT Staff/Regional
NBP	Savage River	GA	Crabtree Creek, Medium Access	TBD	TBD	Annual, 2014	Zippin	BKT Staff
NBP	Savage River	GA	Crabtree Creek, Low Access	TBD	TBD	Annual, 2014	Zippin	BKT Staff
NBP	Savage River	GA	Middlefork Creek, High Access	TBD	TBD	Annual, 2014	Zippin	BKT Staff
NBP	Savage River	GA	Middlefork Creek, Medium Access	TBD	TBD	Annual, 2014	Zippin	BKT Staff
NBP	Savage River	GA	Middlefork Creek, Low Access	TBD	TBD	Annual, 2014	Zippin	BKT Staff
NBP	Savage River	GA	Big Run, High Access	TBD	TBD	Annual, 2014	Zippin	BKT Staff
NBP	Savage River	GA	Big Run, Medium Access	TBD	TBD	Annual, 2014	Zippin	BKT Staff
NBP	Savage River	GA	Big Run, Low Access	TBD	TBD	Annual, 2014	Zippin	BKT Staff
NBP	Savage River	GA	Monroe Run, High Access	TBD	TBD	Annual, 2014	Zippin	BKT Staff
NBP	Savage River	GA	Monroe Run, Medium Access	TBD	TBD	Annual, 2014	Zippin	BKT Staff
NBP	Savage River	GA	Monroe Run, Low Access	TBD	TBD	Annual, 2014	Zippin	BKT Staff
NBP	Savage River	GA	Poplar Lick, High Access	TBD	TBD	Annual, 2014	Zippin	BKT Staff
NBP	Savage River	GA	Poplar Lick, Medium Access	TBD	TBD	Annual, 2014	Zippin	BKT Staff
NBP	Savage River	GA	Poplar Lick, Low Access	TBD	TBD	Annual, 2014	Zippin	BKT Staff
NBP	Savage River	GA	Blue Lick, High Access	TBD	TBD	Annual, 2014	Zippin	BKT Staff
NBP	Savage River	GA	Blue Lick, Medium Access	TBD	TBD	Annual, 2014	Zippin	BKT Staff
NBP	Savage River	GA	Blue Lick, Low Access	TBD	TBD	Annual, 2014	Zippin	BKT Staff
NBP	Savage River	GA	Little Savage River, High Access	TBD	TBD	Annual, 2014	Zippin	BKT Staff
NBP	Savage River	GA	Little Savage River, Medium Access	TBD	TBD	Annual, 2014	Zippin	BKT Staff
NBP	Savage River	GA	Little Savage River, Low Access	TBD	TBD	Annual, 2014	Zippin	BKT Staff

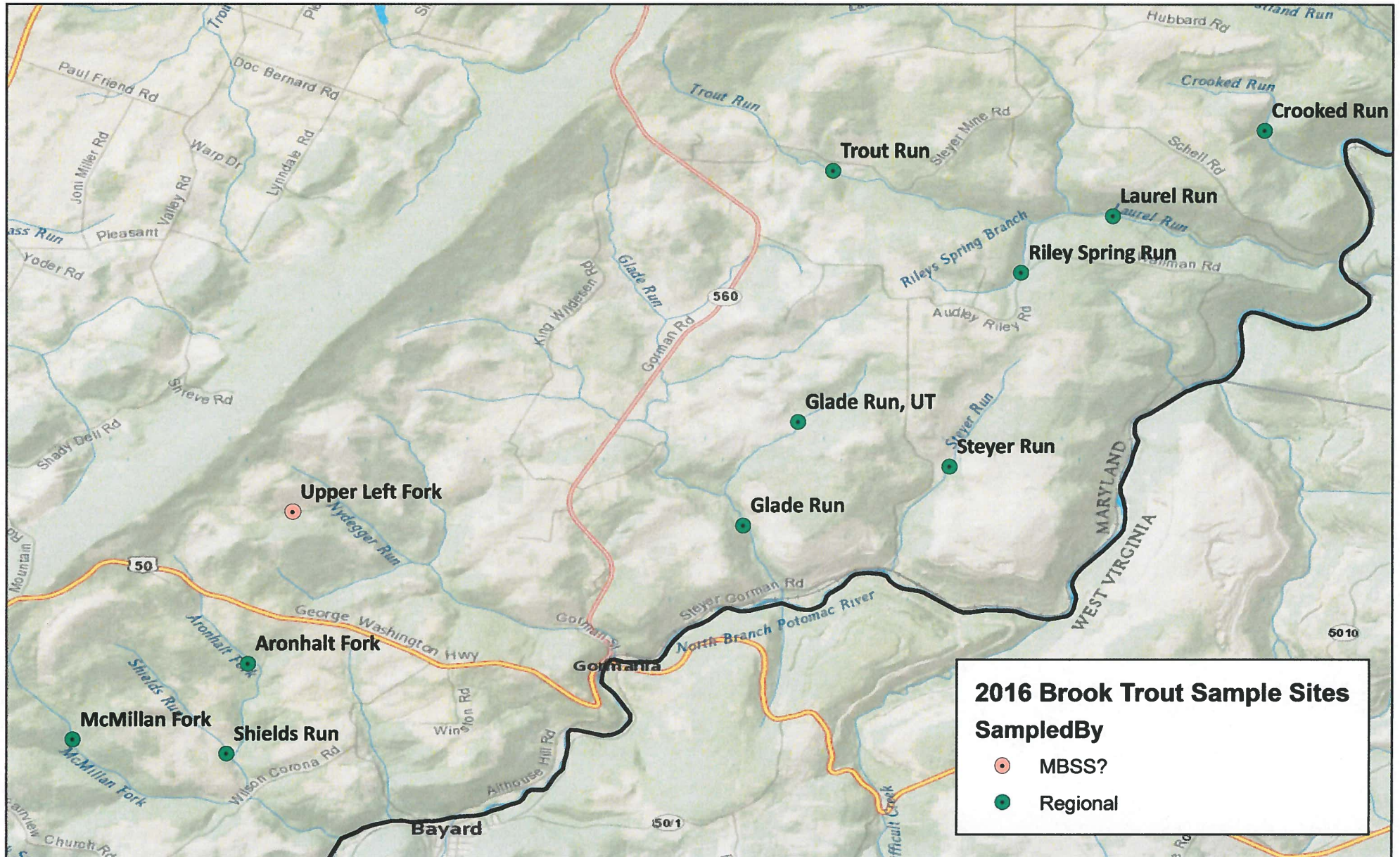


# 2016 BKT Sampling North Branch/Jennings-Randolph





# 2016 BKT Sampling Upper North Branch





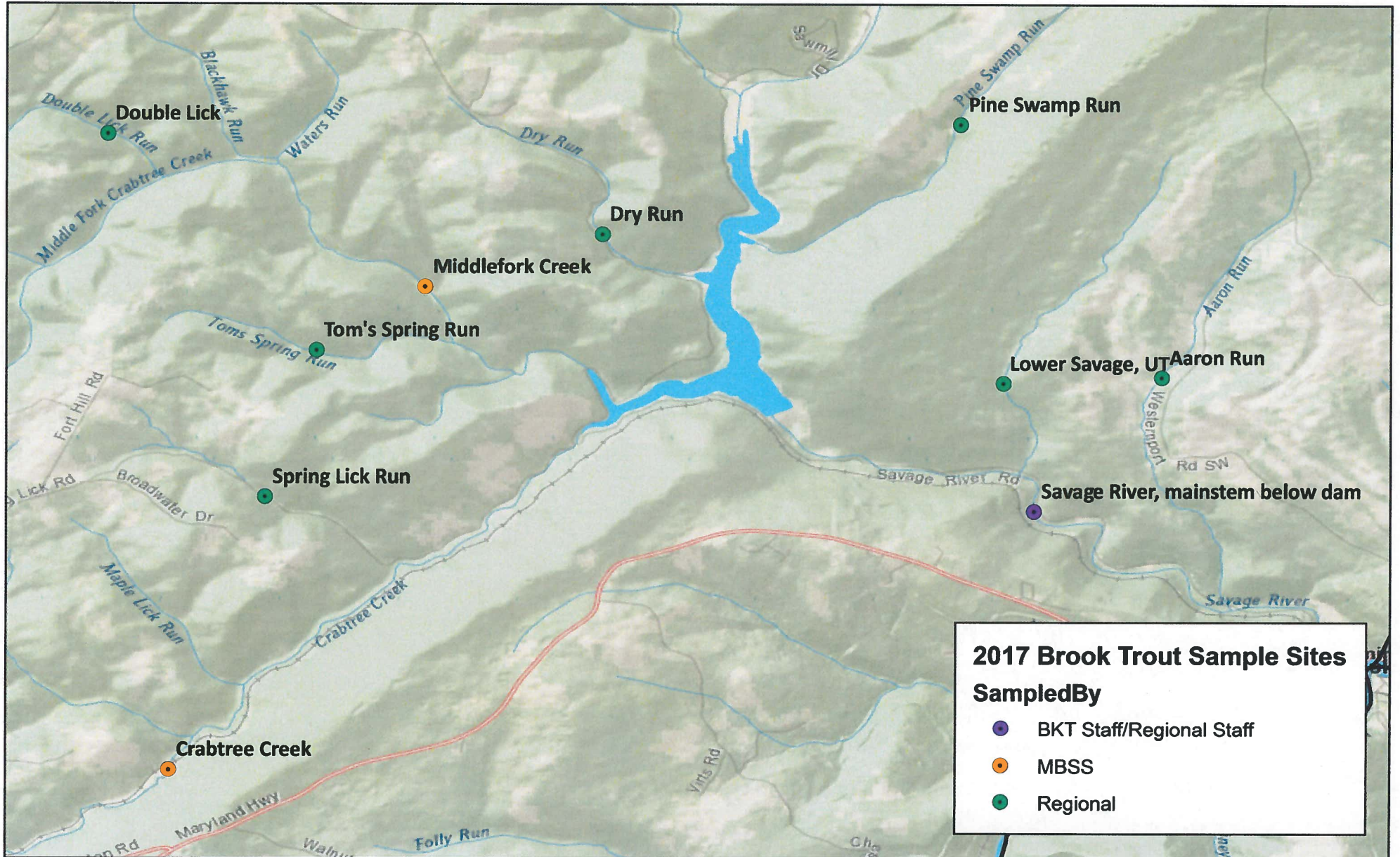
## Brook Trout Sites, 2017

	Sampled once in five year period
	Sampled more than once in a five year period
	Special project, such as Savage River Reg sites
	MBSS

River Basin	Watershed	County	Stream Name	LatitudeDD	LongitudeDD	Multi-Year?	Survey Type	Sampled By
NBP	Savage River	GA	Crabtree Creek	39.46825	-79.20018		Zippin	MBSS
NBP	Savage River	GA	Savage River, mainstem below dam	39.49687	-79.10503	Annual, 2014	Zippin	BKT Staff/Regional Staff
NBP	Crabtree Creek	GA	Spring Lick Run	39.49843	-79.18965		Zippin	Regional
NBP	Savage River	GA	Lower Savage, UT	39.51103	-79.10840	2014	Zippin	Regional
NBP	Savage River	GA	Aaron Run	39.51167	-79.09099		Zippin	Regional
NBP	Middlefork Creek	GA	Tom's Spring Run	39.51467	-79.18402		Zippin	Regional
NBP	Savage River	GA	Middlefork Creek	39.52173	-79.17208		Zippin	MBSS
NBP	Savage River	GA	Dry Run	39.52752	-79.15258		Zippin	Regional
NBP	Middlefork Creek	GA	Double Lick	39.53856	-79.20702		Zippin	Regional
NBP	Savage River	GA	Pine Swamp Run	39.53967	-79.11320		Zippin	Regional
NBP	Big Run	GA	Monroe Run	39.55528	-79.17058		Zippin	Regional
NBP	Savage River	GA	Big Run	39.57183	-79.15863		Zippin	Regional
NBP	Savage River	GA	Bear Pen Run	39.57757	-79.12301		Zippin	Regional
NBP	Big Run	GA	Whiskey Hollow, UT	39.57985	-79.18217		Zippin	Regional
NBP	Savage River	GA	Poplar Lick	39.60010	-79.12145		Zippin	Regional
NBP	Savage River	GA	Elk Lick Run	39.60675	-79.09820		Zippin	Regional
NBP	Savage River	GA	Upper Savage River, Mainstem	39.60848	-79.04752		Zippin	MBSS
NBP	Savage River	GA	Little Savage River	39.61368	-79.02725		Zippin	Regional
NBP	Savage River	GA	Black Lick Run	39.61687	-79.08692		Zippin	Regional
NBP	Savage River	GA	Blue Lick Run	39.63277	-79.05840		Zippin	Regional
NBP	Blue Lick	GA	West Branch Blue Lick	39.63595	-79.07678		Zippin	Regional
NBP	Savage River	GA	Upper Savage, UT2	39.64651	-79.01198		Zippin	Regional
NBP	Mudlick Run	GA	Christley Run	39.66023	-79.04265		Zippin	Regional
NBP	Savage River	GA	Mudlick Run	39.66573	-79.02875		Zippin	Regional
NBP	Savage River	GA	Upper Savage, UT	39.66573	-79.00510		Zippin	Regional
YG	Youghiogheny	GA	Muddy Creek	39.52372	-79.45293	Annual, 2014	Zippin	Regional
YG	Hoyes Run	GA	Fork Run	39.53512	-79.38611	Annual, 2014	Zippin	Regional
YG	Youghiogheny	GA	Hoyes Run	39.54747	-79.39253	Annual, 2014	Zippin	Regional
YG	Bear Creek	GA	Cove Run	39.67332	-79.30340	Annual, 2014	Zippin	Regional

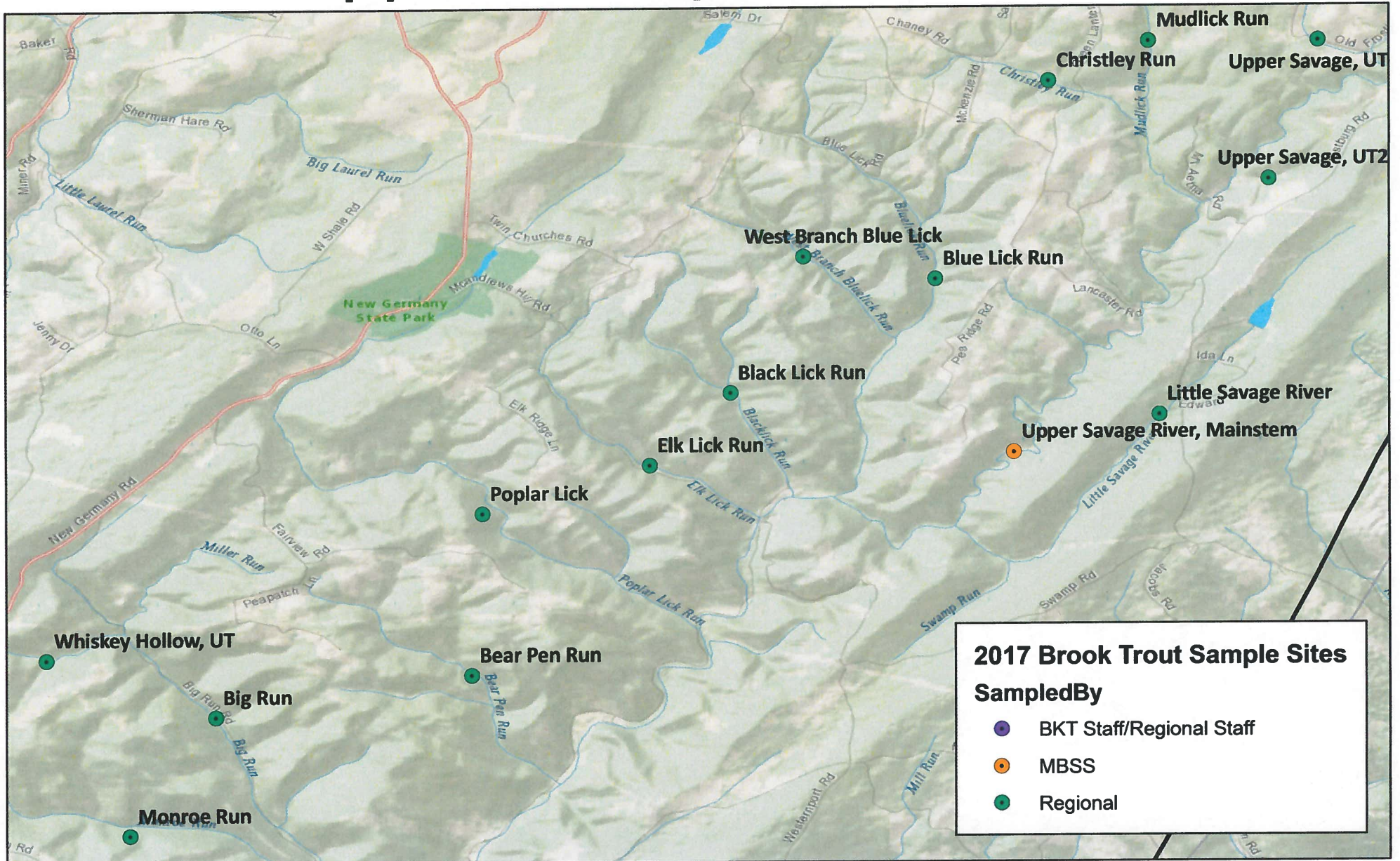


# 2017 BKT Sampling Lower Savage/Savage River Res.





# 2017 BKT Sampling Upper Savage River/Tribs





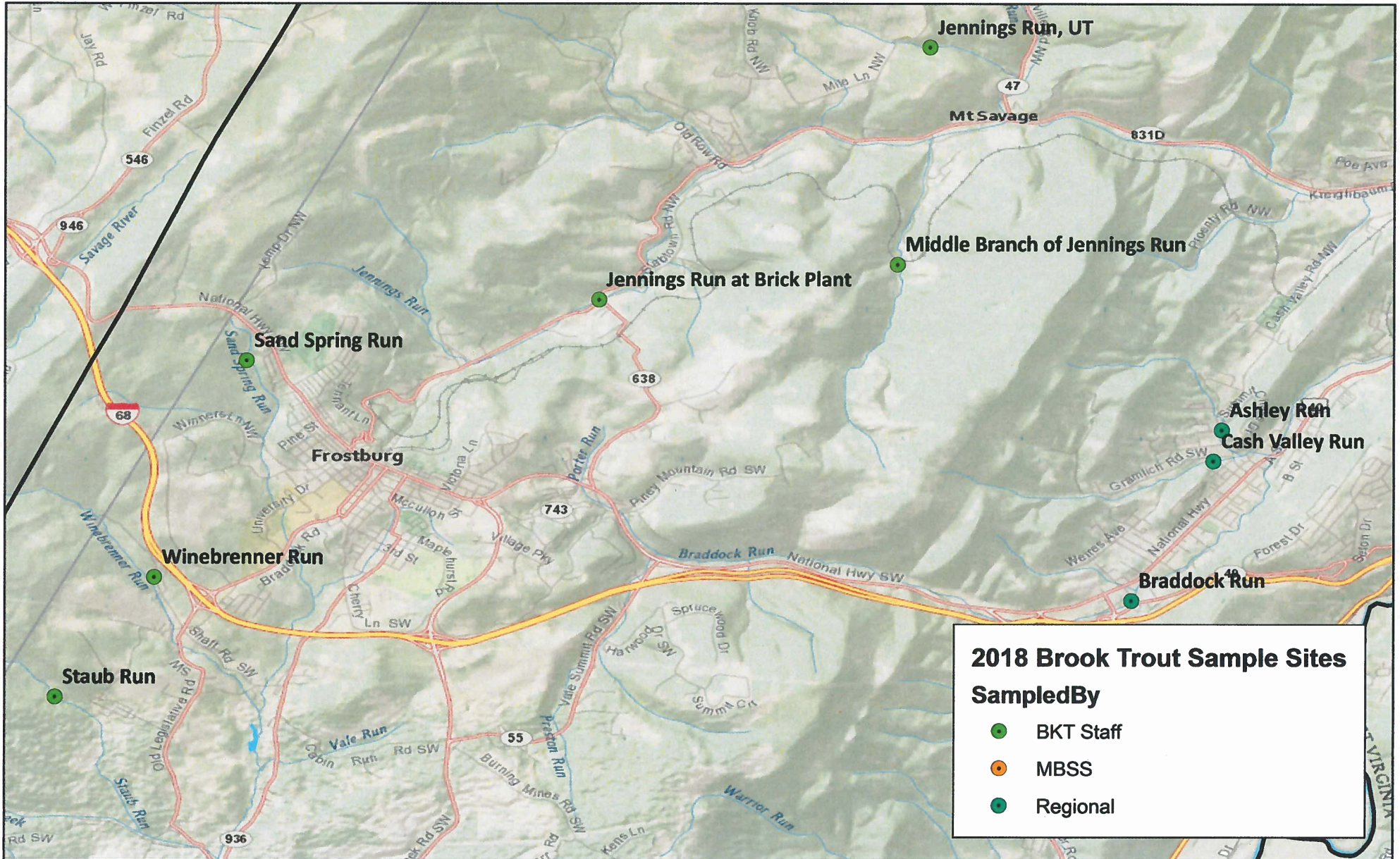
## Brook Trout Sites, 2018

	Sampled once in five year period
	Sampled more than once in a five year period
	Special project, such as Savage River Reg sites
	MBSS

River Basin	Watershed	County	Stream Name	LatitudeDD	LongitudeDD	Multi-Year?	Survey Type	Sampled By
NBP	Mill Run	AL	Mill Run	39.54374	-78.90053		Zippin	MBSS
NBP	Georges Creek	AL	Mill Run	39.54495	-79.06103		Zippin	Regional
NBP	Georges Creek	AL	Jackson Run	39.55071	-78.97382		Zippin	Regional
NBP	Georges Creek	AL	Elk Lick Run	39.56865	-78.92997		Zippin	Regional
NBP	Georges Creek	AL	Laurel Run	39.57268	-79.01417		Zippin	Regional
NBP	Georges Creek	AL	Koontz Run	39.59207	-79.00227		Zippin	Regional
NBP	Georges Creek	AL	Matthews Run	39.59490	-78.91588		Zippin	Regional
NBP	Georges Creek	AL	Neff Run	39.60053	-78.92940		Zippin	Regional
NBP	Georges Creek	AL	Staub Run	39.62547	-78.96682		Zippin	BKT Staff
NBP	Braddock Run	AL	Braddock Run	39.63803	-78.82703		Zippin	Regional
NBP	Georges Creek	AL	Winebrenner Run	39.64106	-78.95394		Zippin	BKT Staff
NBP	Braddock Run	AL	Cash Valley Run	39.65625	-78.81638		Zippin	Regional
NBP	Braddock Run	AL	Ashley Run	39.66027	-78.81530		Zippin	Regional
NBP	Georges Creek	AL	Sand Spring Run	39.66938	-78.94197		Zippin	BKT Staff
NBP	Jennings Run	AL	Jennings Run at Brick Plant	39.67733	-78.89623		Zippin	BKT Staff
NBP	Jennings Run	AL	Middle Branch of Jennings Run	39.68195	-78.85747		Zippin	BKT Staff
NBP	Evitts Creek	AL	Rocky Gap Run, downstream of Habeeb	39.69882	-78.68010		Zippin	BKT Staff
NBP	Jennings Run	AL	Jennings Run, UT	39.71021	-78.85331		Zippin	BKT Staff
NBP	Evitts Creek	AL	Rocky Gap Run, upstream of Habeeb	39.71903	-78.64000		Zippin	BKT Staff
NBP	Evitts Creek	AL	Hazen Run	39.71927	-78.67542		Zippin	BKT Staff
YG	Youghiogheny	GA	Muddy Creek	39.52372	-79.45293	Annual, 2014	Zippin	Regional
YG	Hoyes Run	GA	Fork Run	39.53512	-79.38611	Annual, 2014	Zippin	Regional
YG	Youghiogheny	GA	Hoyes Run	39.54747	-79.39253	Annual, 2014	Zippin	Regional
YG	Bear Creek	GA	Cove Run	39.67332	-79.30340	Annual, 2014	Zippin	Regional
YG	Casselman	GA	Big Laurel Run	39.65646	-79.15854	Bi, 2014	Zippin	Regional
YG	Casselman	GA	Little Laurel Run	39.63971	-79.16825	Bi, 2014	Zippin	Regional
YG	Casselman	GA	South Branch Casselman	39.61108	-79.19225	Bi, 2014	Zippin	Regional
YG	Casselman	GA	Spiker Run	39.68991	-79.18191	Bi, 2014	Zippin	Regional
NBP	Savage River	GA	Savage River, mainstem below dam	39.49687	-79.10503	Annual, 2014	Zippin	BKT Staff/Regional Staff

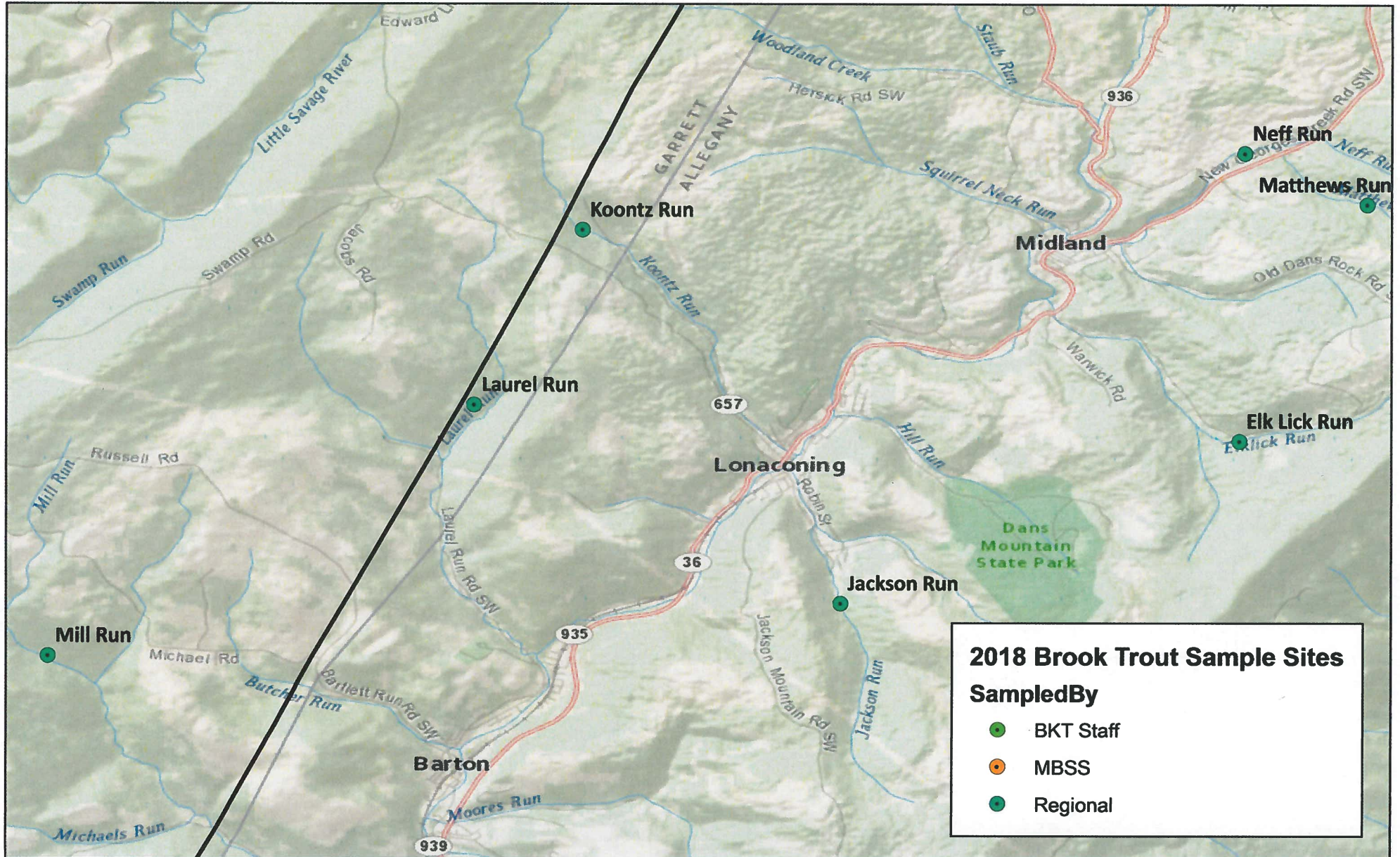


# 2018 BKT Sampling Upper George's/Braddock/Jennings Run





# 2018 BKT Sampling Lower George's Creek





# 2018 BKT Sampling Evitts Creek/Lake Habeeb

