



## **Maryland Forest Service**

### **Wildland Fire Program**

# **2021 Annual Wildland Fire Report**

*Contact:*

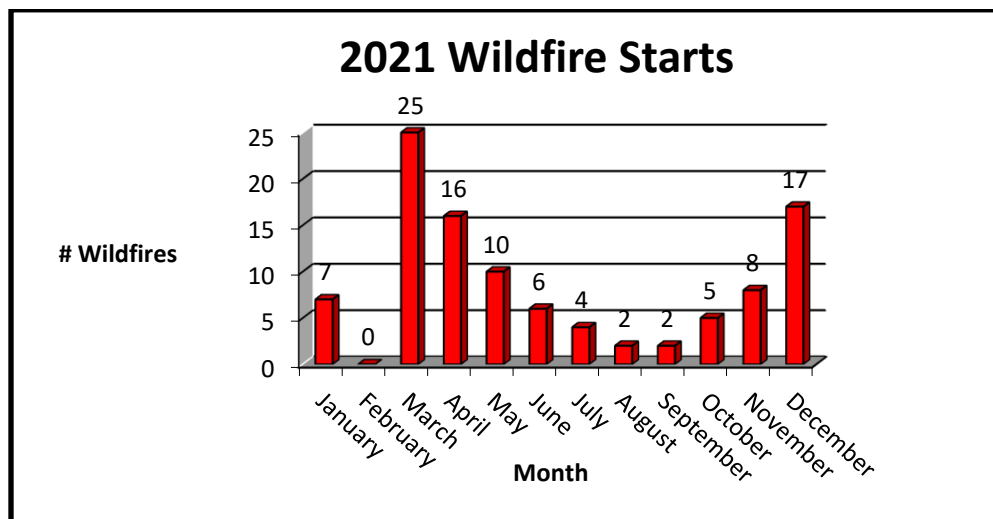
Chris Robertson  
State Fire Supervisor  
580 Taylor Avenue, E-1  
Annapolis, MD 21401  
410-260-8503



<b>USDA Forest Service WILDFIRE SUMMARY REPORT (Reference FSH 3090.11)</b>			
<b>1. Area/Region:</b> USDA FS (Region 9) SPF		<b>2. State:</b> Maryland	<b>3. Calendar Year:</b> 2021
<b>4. Program: Cooperative Fire Protection</b>		<b>5. Source: Maryland Forest Service</b>	
<b>ITEM (a)</b>	<b>LINE (b)</b>	<b>NUMBER (c)</b>	<b>ACRES (d)</b>
<b>6. Protective status:</b> <b>a. TOTAL ACREAGE PROTECTED</b>	1		3,200,000
<b>7. Wildfires and acres burned by causes;</b>			
<b>a. Lightning</b>	2	6	0.6
<b>b. Campfire</b>	3	8	6.0
<b>c. Smoking</b>	4	3	0.3
<b>d. Debris burning</b>	5	34	32.8
<b>e. Arson</b>	6	24	1202.7
<b>f. Equipment Use</b>	7	8	38.3
<b>g. Railroads</b>	8	1	0.5
<b>h. Children</b>	9	3	2.5
<b>i. Miscellaneous</b>	10	15	79.3
<b>j. TOTAL (add lines 7a through 7i)</b>	11	102	1363.0
<b>8. Wildfire and acres burned by size class</b>			
<b>a. Class A - 0.25 acres or less</b>	12	37	4.7
<b>b. Class B - 0.26 to 9 acres</b>	13	57	76.3
<b>c. Class C - 10 to 99 acres</b>	14	5	112.0
<b>d. Class D - 100 to 299 acres</b>	15	1	200.0
<b>e. Class E - 300 to 999 acres</b>	16	2	970.0
<b>f. Class F - 1000 to 4999 acres</b>	17	0	0
<b>g. Class G - 5000 acres or more</b>	18	0	0
<b>h. TOTAL (add lines 8a through 8g)</b>	19	102	1363.0

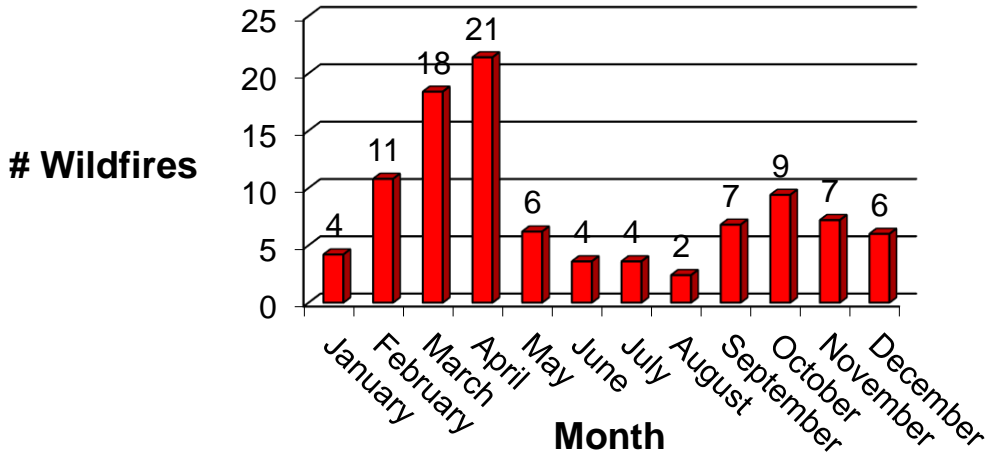
## 2021 Wildfires by Month

Month	2021	
	# Fires	Ac Burned
January	7	973.8
February	0	0.0
March	25	89.0
April	16	25.0
May	10	22.5
June	6	24.8
July	4	1.5
August	2	0.2
September	2	0.7
October	5	6.5
November	8	8.0
December	17	211.0
<b>Grand Totals</b>	102	1,363.0

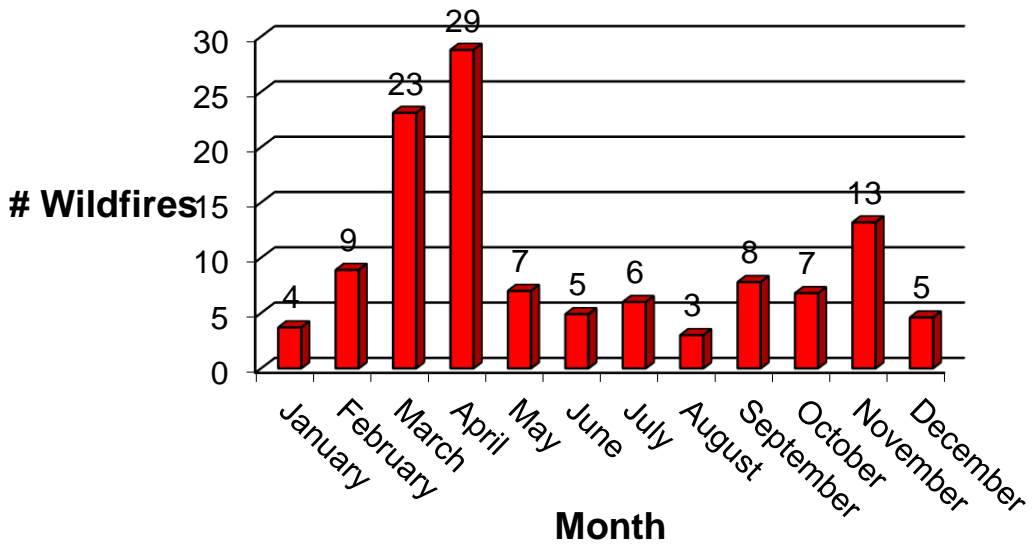


## Average Wildfires by Month

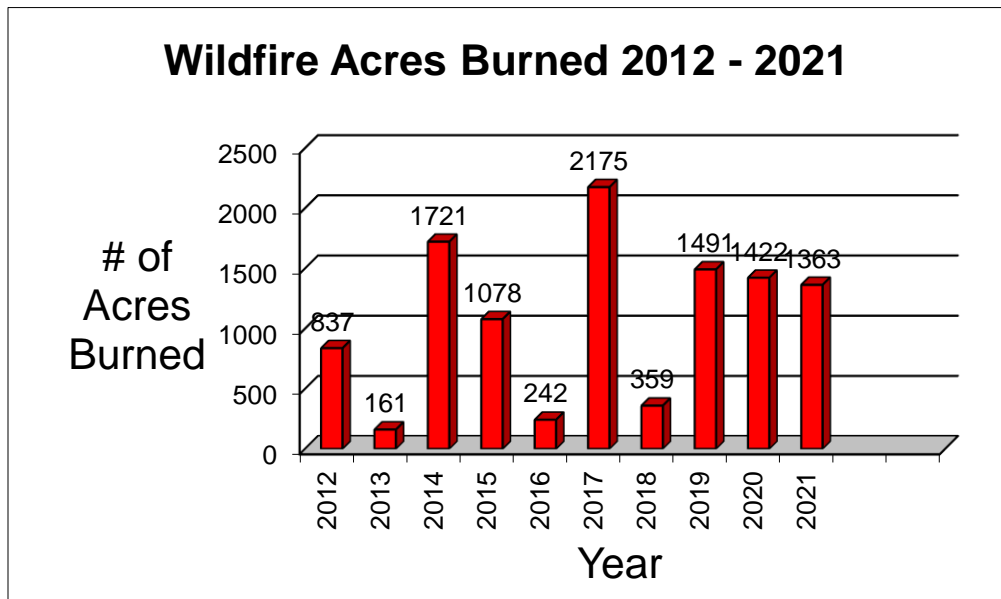
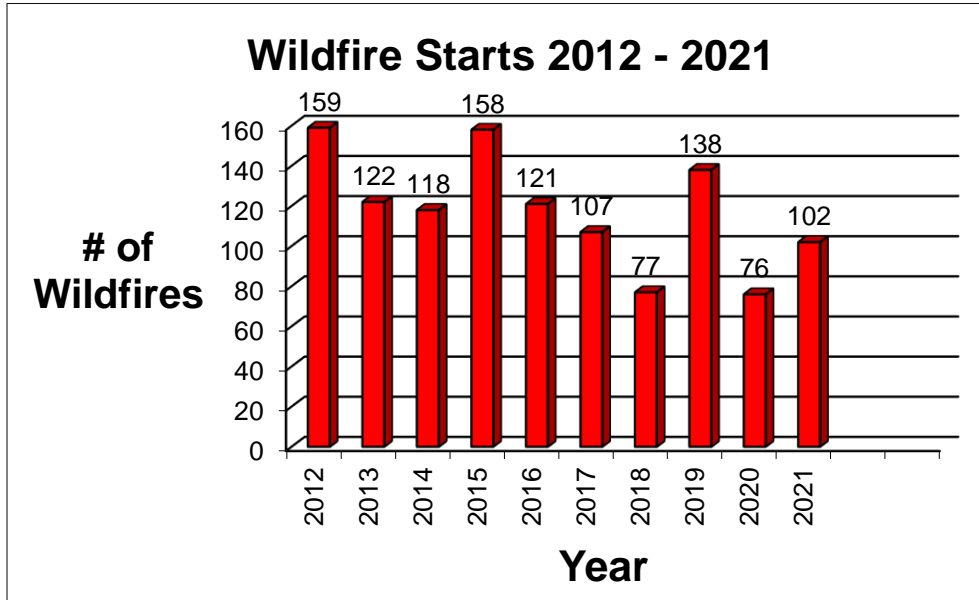
### 5 Year Average # Wildfires Per Month 2017 - 2021



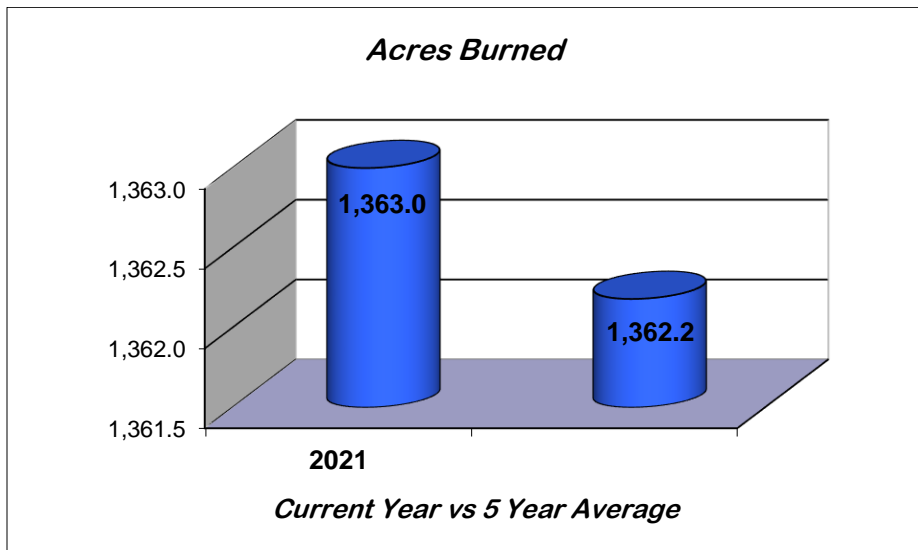
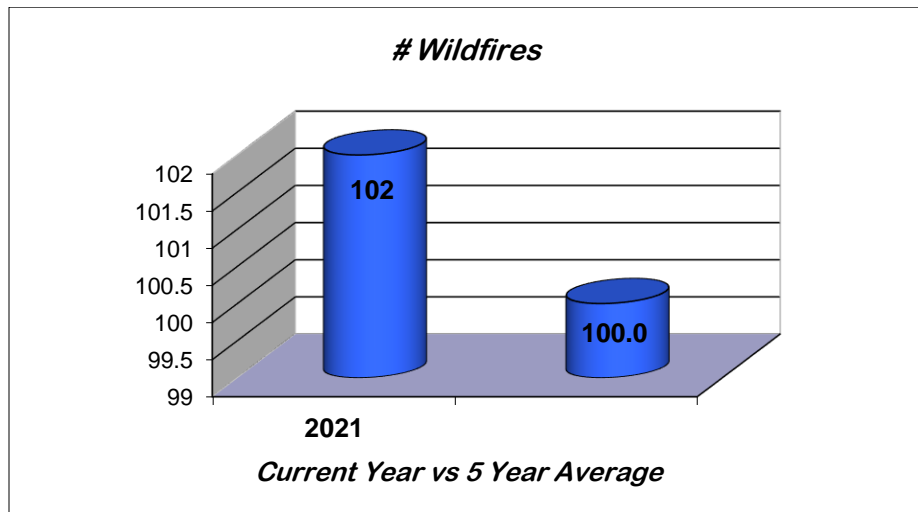
### 10 Year Average # Wildfires Per Month 2012 - 2021



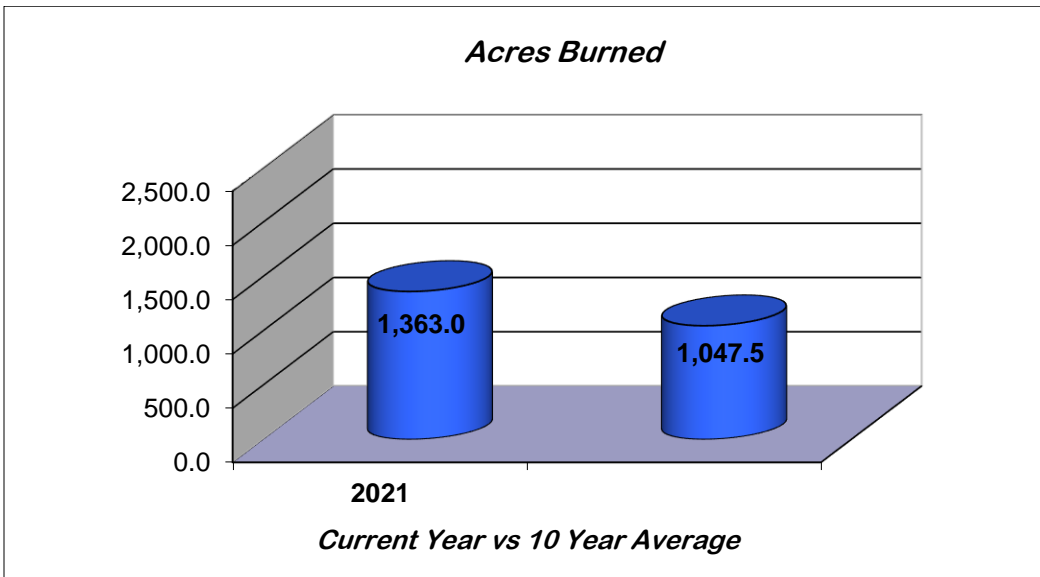
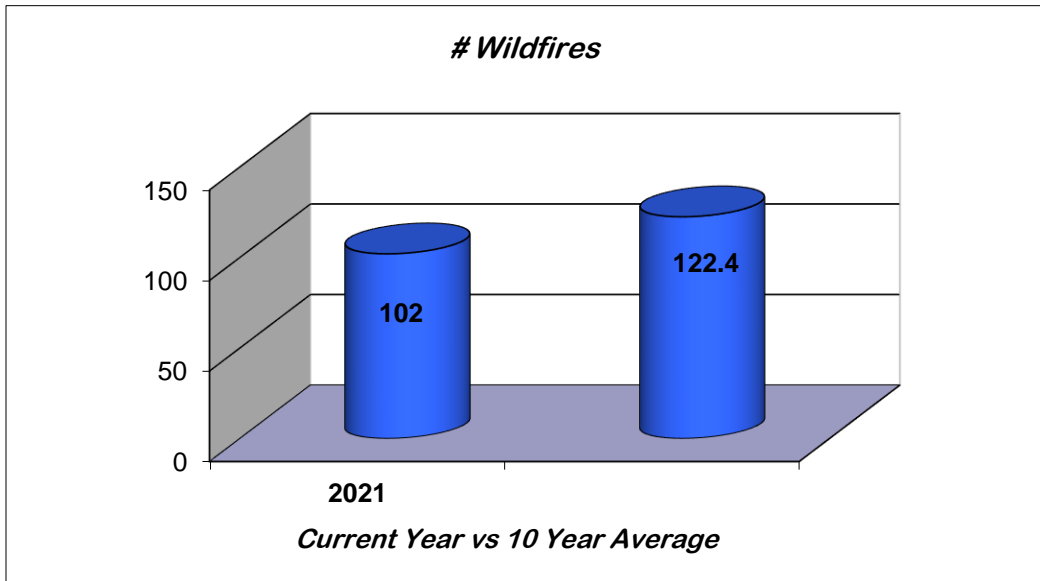
## Fire Starts & Acres Burned 2012 – 2021



## Current Year vs. 5 Year Average

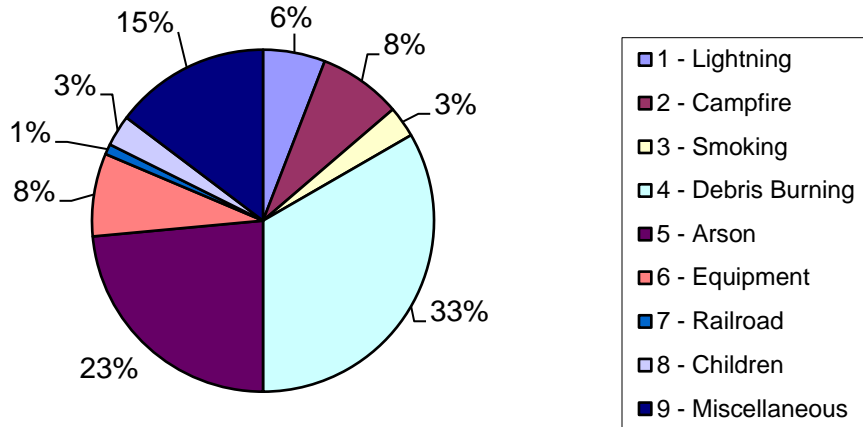


## Current Year vs. 10 Year Average

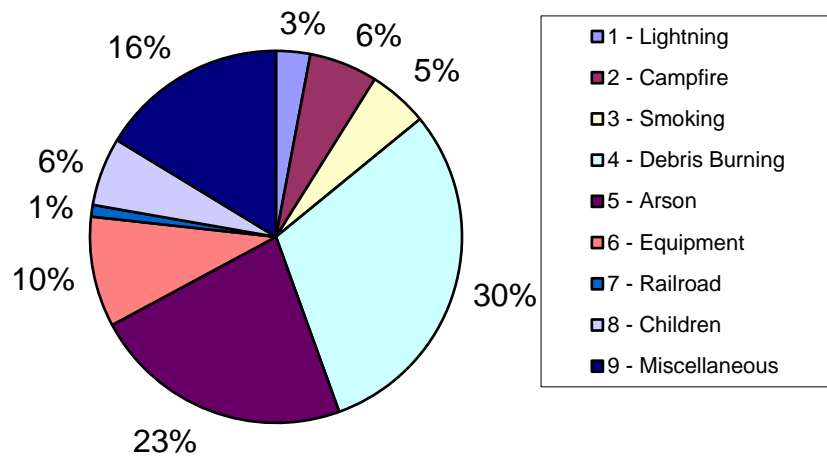


# Wildfire Cause

## 2021 Fire Cause



## 2012 - 2021 Average Wildfire Cause



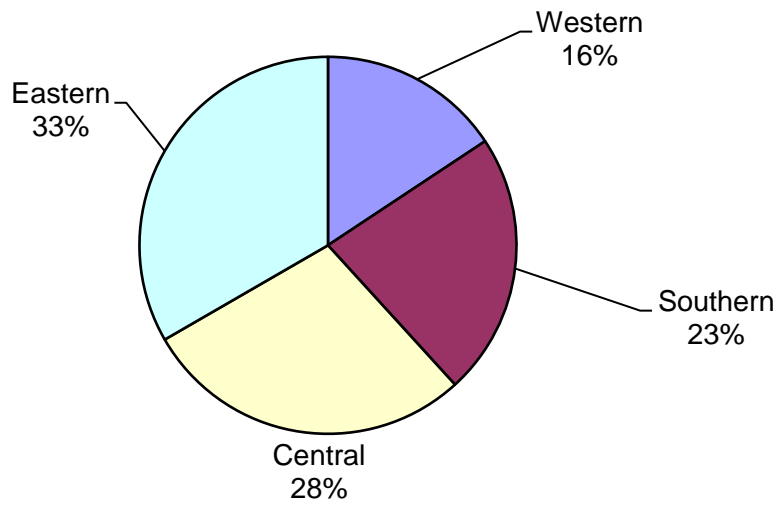


## 2021 Regional Statistics

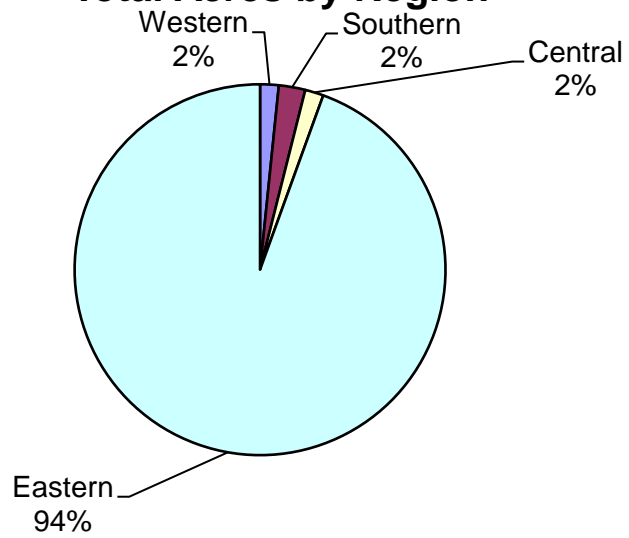
<b>Region</b>	<b># Fires</b>	<b>Acres Burned</b>
Western	16	22.1
Southern	23	31.4
Central	29	22.0
Eastern	34	1287.5
<b>Totals</b>	<b>102</b>	<b>1363.0</b>

<b>ACRES BURNED BY REGION</b>				
<b>Region</b>	<b>Forest</b>	<b>Marsh</b>	<b>Non-Forest</b>	<b>Total</b>
Western	19.2	0.0	2.9	22.1
Southern	18.4	1.0	12.0	31.4
Central	13.8	0.1	8.1	22.0
Eastern	107.6	1176.0	3.9	1287.5
<b>Totals</b>	<b>159.0</b>	<b>1177.1</b>	<b>26.9</b>	<b>1363.0</b>

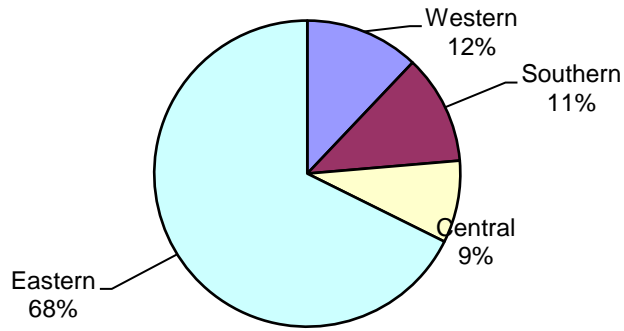
### Wildfires by Region



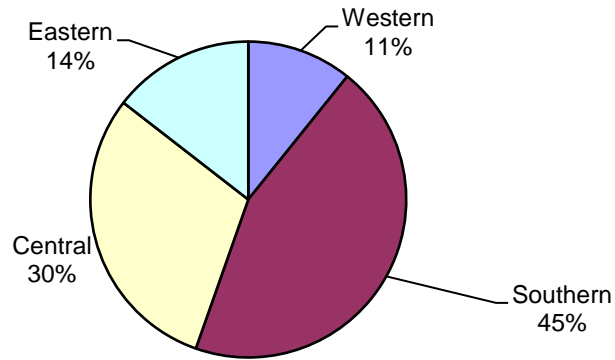
### Total Acres by Region



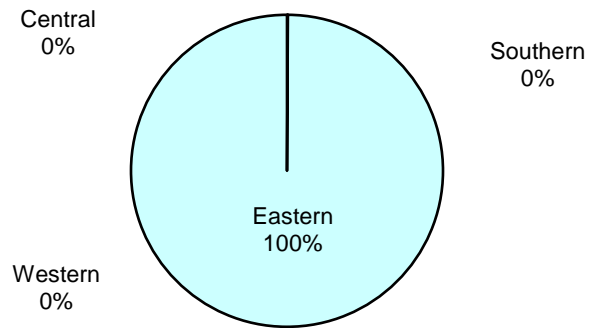
### Forest Acres by Region



### Non-Forest Acres by Region



### Marsh Acres by Region



**Maryland Forest Service & Cooperators  
2021 Prescribed Burns by Region**

<b>Western</b>				
<b>COUNTY</b>	<b>MONTH</b>	<b>FUEL TYPE</b>	<b>ACRES</b>	<b># OF BURNS</b>
Allegany	March	Grass	45.8	10
Allegany	March	Grass	22.5	6
Washington	March	Grass	31.6	2
Washington	March	Understory	35	1
Frederick	November	Understory	16	1
Washington	December	Understory	13	1
<b>Sub Total</b>			163.9	21
<b>Southern</b>				
<b>COUNTY</b>	<b>MONTH</b>	<b>FUEL TYPE</b>	<b>ACRES</b>	<b># OF BURNS</b>
Calvert	March	Grass	22.3	5
<b>Sub Total</b>			22.3	5
<b>Central</b>				
<b>COUNTY</b>	<b>MONTH</b>	<b>FUEL TYPE</b>	<b>ACRES</b>	<b># OF BURNS</b>
Cecil	March	Grass	17.2	1
Cecil	March	Grass	40.5	2
Montgomery	March	Grass	0.3	1
Cecil	September	Grass	10.2	1
Cecil	March / April	Grass	46	3

Cecil	November	Grass / Understory	17.5	1
Cecil	November	Grass	20	1
<b>Sub Total</b>			151.7	10
<b>Eastern</b>				
<b>COUNTY</b>	<b>MONTH</b>	<b>FUEL TYPE</b>	<b>ACRES</b>	<b># OF BURNS</b>
Wicomico	March	Grass / slash	108	1
Dorchester	March	Understory	27	1
Worcester	April	Grass	41	2
Kent	March	Grass	36	1
Kent	March	Grass	71.6	6
Queen Anne's	Feb/Mar/Apr	Grass	81.7	9
Dorchester	March	Understory	23	1
Worcester	April	Understory	125	2
Wico & Wor	March	Understory	435	1
Wico & Wor	April	Understory	250	1
Worcester	May	Understory	53	1
Wico & Wor	May	Understory	919	1
Dorchester	May	Understory	107	3
Kent	September	Grass	5	1
Caroline	September	Understory	63	3
Queen Anne's	September	Grass	4	1
Worcester	October	Understory	36	1
Wicomico	November	Understory	17	1
Wicomico	November	Understory	9	1
Wicomico	November	Grass	20	2
<b>Sub Total</b>			2431.3	40
<b>Grand Totals</b>			<b>2769.2</b>	<b>76</b>

2021 Wildfire Statistics for Wildfire Response by  
the Department of Natural Resources - Maryland Forest Service

This report does not include all wildfire statistics for the State of Maryland.  
Statewide statistics are reported by the State Fire Marshal in the  
Maryland Fire Incident Reporting System (MFIRS)



Larry Hogan, Governor  
Boyd Rutherford, Lt. Governor



Jeannie Haddaway-Riccio, Secretary  
Philip R. Hager, Assistant Secretary



Anne Hairston-Strang, Acting Director/State Forester  
Chris Robertson, State Fire Supervisor

[dnr.maryland.gov](http://dnr.maryland.gov)

Toll free in Maryland: 877-620-8367 | Out of state call: 410-260-8100 | TTY Users call via the MD Relay 711

The facilities and services of the Maryland Department of Natural Resources are available to all without regard to race, color, religion, sex, sexual orientation, age, national origin or physical or mental disability. This document is available in alternative format upon request.

Publication # DNR 02-011122-298