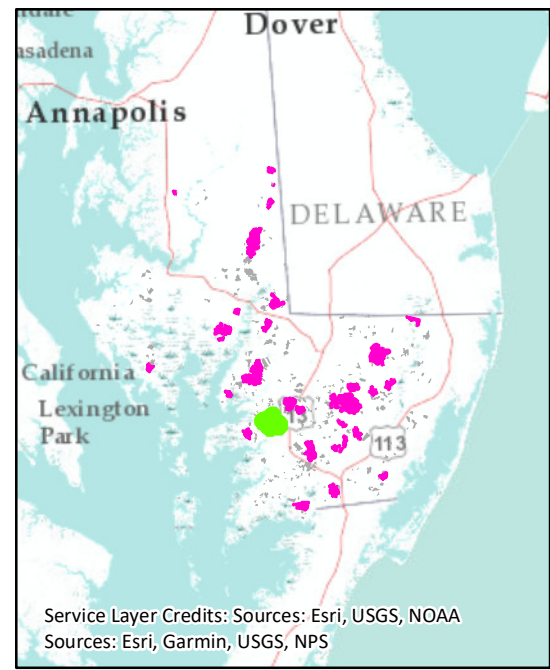


Legend		
	<b>Chesapeake Forest</b>	<b>Public Hunting Tracts</b>
	<b>Not Open for Public Hunting</b>	
	<b>Parking Area</b>	
	<b>Roads</b>	<b>Right-of-Way</b>
		<b>Handicapped Access</b>
		<b>Forest Roads</b>
		<b>Forest Trails</b>
	<b>DNR Lands</b>	<b>State Park</b>
		<b>Wildlife Management Area</b>
		<b>Other DNR Lands</b>
		<b>Pocomoke State Forest</b>

PLEASE READ THE SPECIAL HUNTING REGULATIONS PERTAINING TO CHESAPEAKE FOREST:  
<http://www.dsd.state.md.us/comar/getfile.aspx?file=08.01.07.04.htm>



Service Layer Credits: Sources: Esri, USGS, NOAA  
 Sources: Esri, Garmin, USGS, NPS

ASC-DNR Forest Service 11/2020



# CHESAPEAKE FOREST PUBLIC USE AREAS

## S21 - E. MACE SMITH COMPLEX - 1,737 ACRES - SOMERSET COUNTY