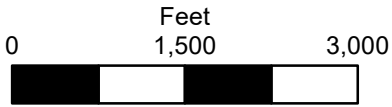
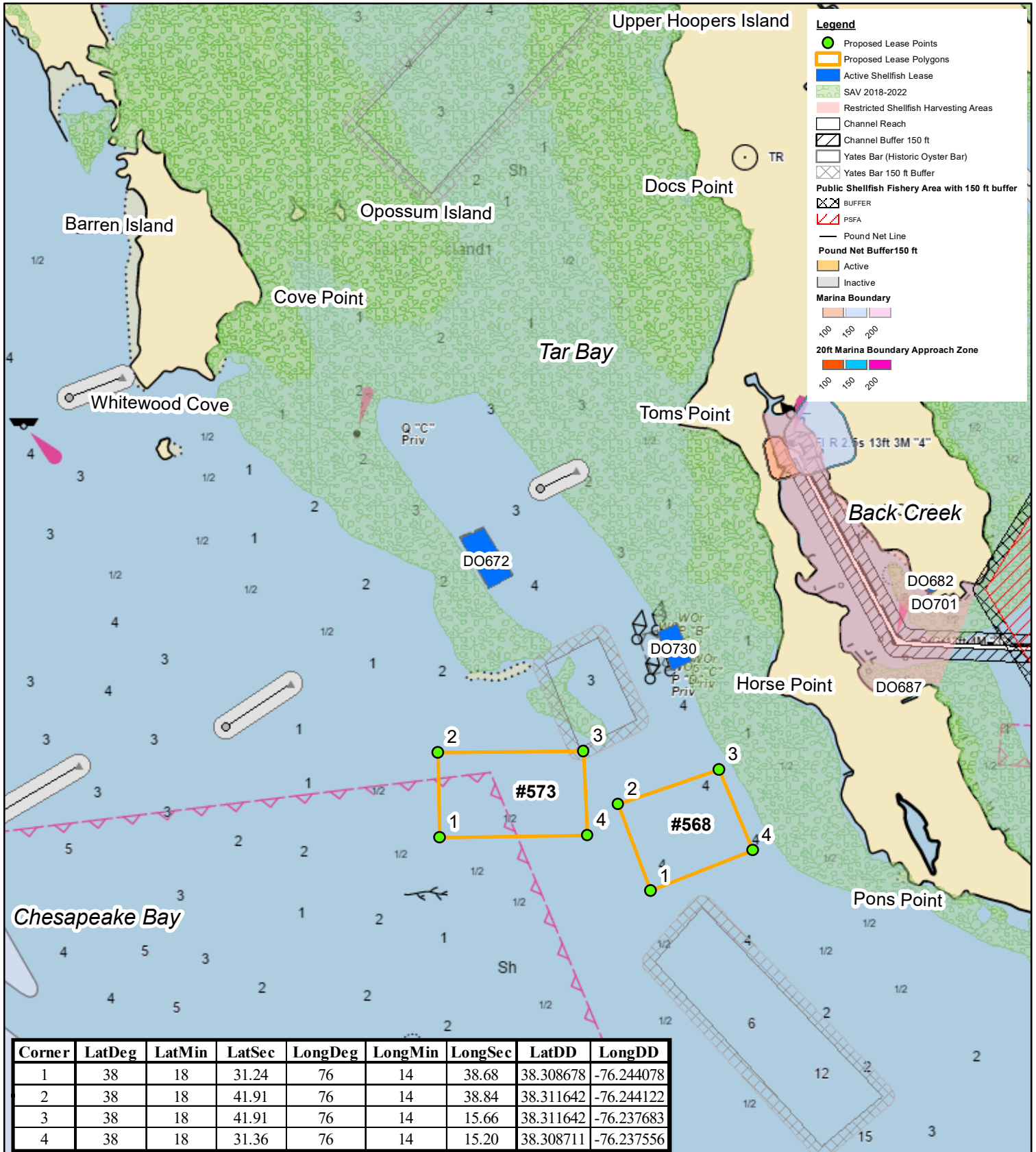


Proposed Shellfish Submerged Land Lease Hayden, Jr. & Hayden #573 Tar Bay, Dorchester County, MD



Aquaculture & Industry Enhancement Division
Map Created 4/2/2024
(1:20,000 scale)



Corner	LatDeg	LatMin	LatSec	LongDeg	LongMin	LongSec	LatDD	LongDD
1	38	18	31.24	76	14	38.68	38.308678	-76.244078
2	38	18	41.91	76	14	38.84	38.311642	-76.244122
3	38	18	41.91	76	14	15.66	38.311642	-76.237683
4	38	18	31.36	76	14	15.20	38.308711	-76.237556