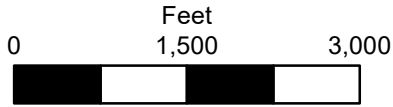


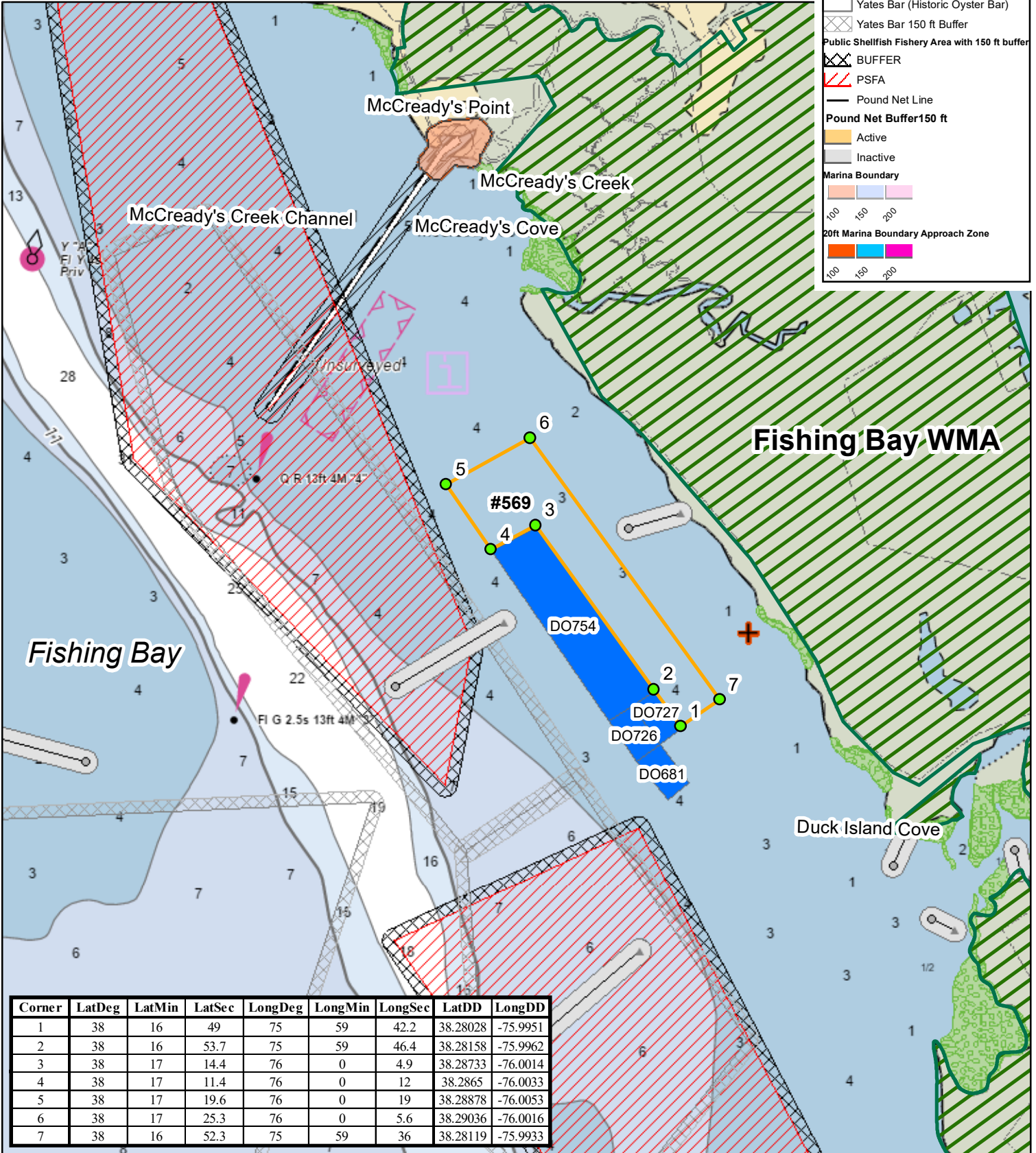
Proposed Shellfish Water Column Lease Abbott, Jr. etal #569 Fishing Bay, Dorchester County, MD



Aquaculture & Industry Enhancement Division
Map Created 4/3/2024
(1:20,000 scale)

Legend

- Proposed Lease Points
- Proposed Lease Polygons
- Fishing Bay WMA
- Active Shellfish Lease
- SAV 2018-2022
- Channel Reach
- Channel Buffer 150 ft
- + Licensed Blinds
- Yates Bar (Historic Oyster Bar)
- Yates Bar 150 ft Buffer
- Public Shellfish Fishery Area with 150 ft Buffer
- BUFFER
- PSFA
- Pound Net Line
- Pound Net Buffer 150 ft
- Inactive
- Marina Boundary**
- 100
- 150
- 200
- 20ft Marina Boundary Approach Zone**
- 100
- 150
- 200



Corner	LatDeg	LatMin	LatSec	LongDeg	LongMin	LongSec	LatDD	LongDD
1	38	16	49	75	59	42.2	38.28028	-75.9951
2	38	16	53.7	75	59	46.4	38.28158	-75.9962
3	38	17	14.4	76	0	4.9	38.28733	-76.0014
4	38	17	11.4	76	0	12	38.2865	-76.0033
5	38	17	19.6	76	0	19	38.28878	-76.0053
6	38	17	25.3	76	0	5.6	38.29036	-76.0016
7	38	16	52.3	75	59	36	38.28119	-75.9933