

Chesapeake and Atlantic Coastal Bays Critical Area Training Day 5

Comprehensive Reviews

April 27, 2023





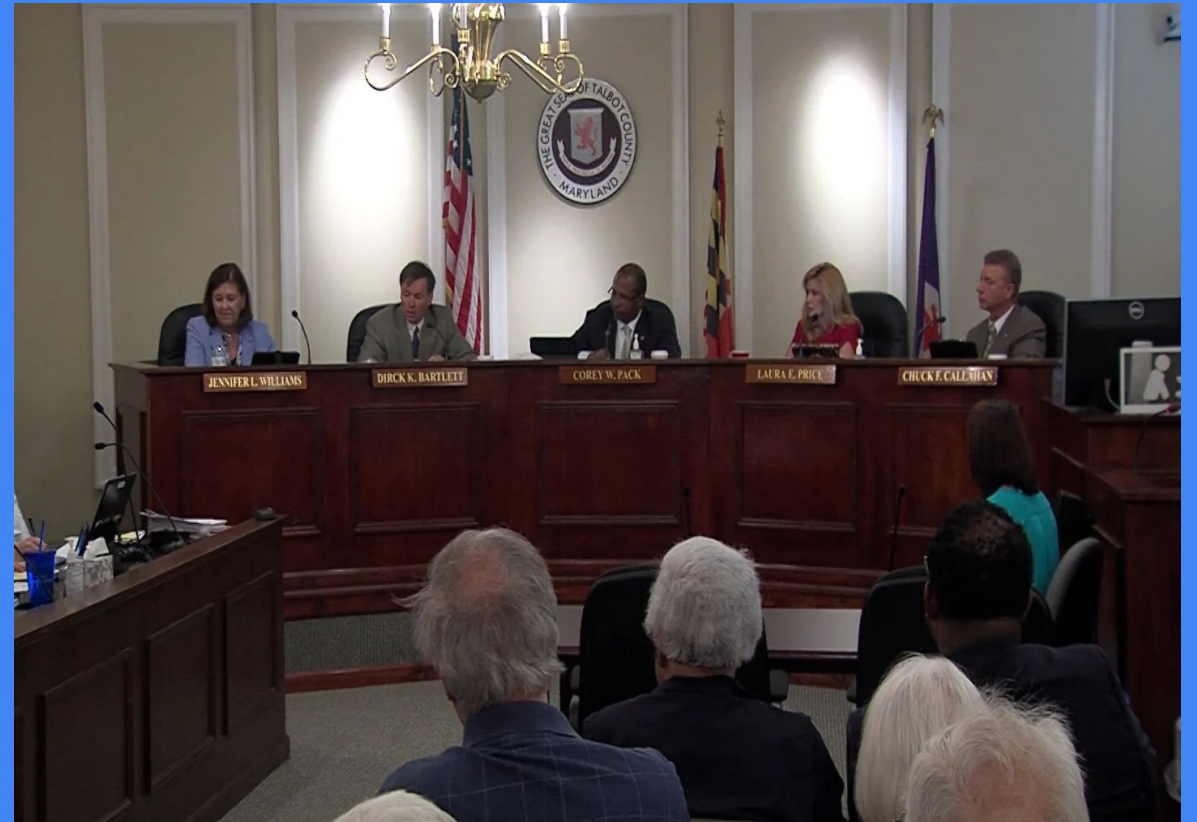
Overview

- Process for Updating Local Critical Area Ordinances
- Required Components
- Alternative Standards
- Q&A with Dianne Klair, City of Havre de Grace

Natural Resources Article 8-1809(g)



- “Each local jurisdiction shall review its entire program and propose any necessary amendments to its entire program.”
- Includes amendments to local zoning maps
- Required at least every six years



Submittal Requirements



- Statement certifying the comprehensive review has been completed.
- Requests for program amendments or refinements to be considered.
- Updated Resource Inventory.
- Statement quantifying acreages within each land classification, the growth allocation used, and the growth allocation remaining.





DORCHESTER COUNTY

PLANNING & ZONING OFFICE
501 Court Lane, Room III
P.O. Box 107
Cambridge, Maryland 21613

Steve Dodd, Director
Rodney Banks, Asst. Director
410-228-3234 office
410-228-1563 facsimile

May 9, 2017

Ms. Charlotte Shearin
Critical Area Commission
1804 West Street, Suite 100
Annapolis, MD 21401

Dear Ms. Shearin,

On May 2, 2017 during a scheduled public hearing the Dorchester County Council adopted the enclosed bill, No. 2017-3. This bill was an update to the County's Critical Area Program Ordinance and unified the program into Chapter 68 of the County Code. The County request that the bill be taken up for approval by the Critical Area Commission at its earliest available meeting. The County is aware that this update is not law until it is approved by the Commission.

Regards,

Brian Soper
Environmental Planner

Encl: (1)

CC: File Dorchester Planning and Zoning



TOWN OF NORTH BEACH

"The Jewel of the Chesapeake Bay"
8916 CHESAPEAKE AVENUE
P.O. BOX 99
NORTH BEACH, MARYLAND 20714
Phone: 301.855.6681 or 410.257.9618 Fax: 301.855.0113

Mark R. Frazer, Mayor

October 16, 2017

Critical Area Commission for the Chesapeake
& Atlantic Coastal Bays
1804 West Street, Suite 100
Annapolis, MD

Re: Town of North Beach Critical Area Map
Update

Dear Chairman Deegan:

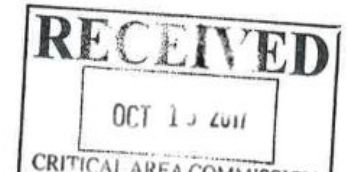
The Town of North Beach Mayor and Council passed Ordinance 17-12; An Ordinance of the Mayor and Council of the Town of North Beach to approve the Town of North Beach Summary Draft Critical Area Map provided by the Department of Natural Resources and the Critical Area Commission. This ordinance was passed on September 14, 2017. A copy is enclosed.

At this time, the Town is requesting the map is processed as a refinement at the Commission's next meeting.

If you have any additional questions please feel free to contact me.

Sincerely,

Stacy Wilkerson, Town Clerk
Town of North Beach

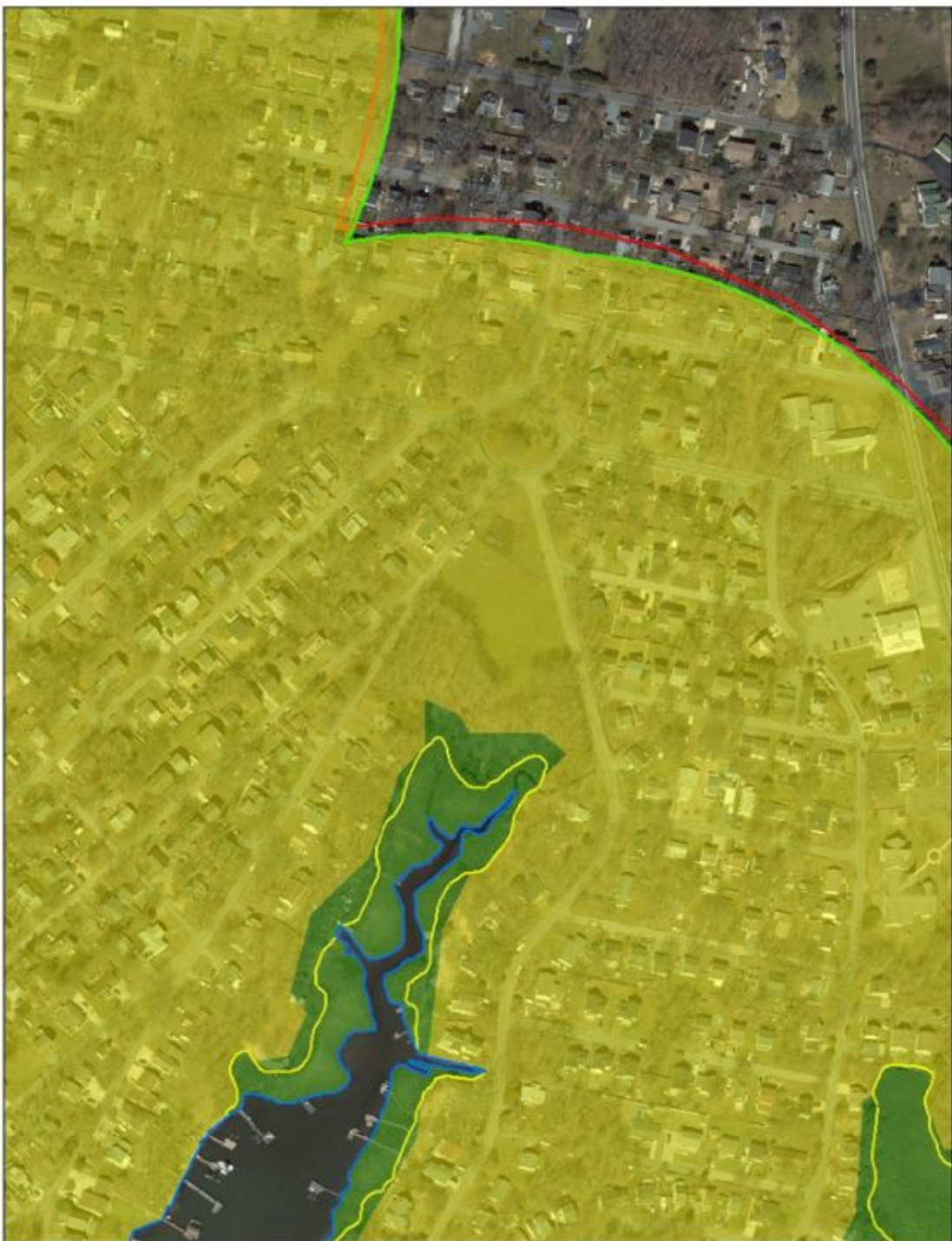


Natural Resources Inventory Update



- COMAR 27.01.10.A
- Work with DNR to identify any updates to the location of Rare, Threatened, and Endangered Species
- Coordinate with Claudia Jones, Science Advisor
- Include reference to updated Data Sources in Comp Review





Acreages

- Acreage totals for RCA, LDA, and IDA
 - Can be calculated using updated Critical Area Maps
- Growth Allocation Acreages
 - Total Amount
 - Total Used
 - Total Remaining
 - Coordinate with Critical Area staff (Michael Grassmann) to update Growth Allocation Records

Model Ordinance

- Updated in 2022
- Reach out to your CAC staff contact if you have questions



MUNICIPAL MODEL CRITICAL AREA ORDINANCE

PART 1. IMPLEMENTATION OF THE CRITICAL AREA PROGRAM PURPOSE AND GOALS	1
A. GOALS.	1
B. [MUNICIPALITY’S] CRITICAL AREA PROGRAM.....	1
C. RESPONSIBILITIES.	1
D. CRITICAL AREA OVERLAY DISTRICT MAP.	2
PART 2. DEVELOPMENT STANDARDS IN THE CRITICAL AREA.	3
A. GENERAL REQUIREMENTS IN ALL CRITICAL AREA OVERLAY ZONES.....	3
B. INTENSELY DEVELOPED AREAS.	9
C. LIMITED DEVELOPMENT AREAS.	10
D. RESOURCE CONSERVATION AREAS.....	14
PART 3. THE BUFFER.	17
A. APPLICABILITY & DELINEATION.	17
B. DEVELOPMENT ACTIVITIES IN THE BUFFER.	18
C. BUFFER ESTABLISHMENT.....	19
D. MITIGATION FOR IMPACTS TO THE BUFFER.	21
E. BUFFER PLANTING STANDARDS.	22
F. REQUIRED SUBMITTAL OF BUFFER MANAGEMENT PLANS.....	22
G. FEE-IN-LIEU OF BUFFER MITIGATION.	23
PART 4. MODIFIED BUFFER AREA (MBA).	24
A. APPLICABILITY.....	24
B. DEVELOPMENT AND REDEVELOPMENT STANDARDS.....	24
PART 5. OTHER HABITAT PROTECTION AREAS.	26
A. IDENTIFICATION.	26
B. STANDARDS.	27
PART 6. WATER DEPENDENT FACILITIES.	28
A. APPLICABILITY.....	28
B. GENERAL CRITERIA.	28
C. GENERAL REQUIREMENTS FOR THE LOCATION OF WATER-DEPENDENT FACILITIES OR ACTIVITIES.	30
D. INDUSTRIAL AND PORT-RELATED FACILITIES.	31
E. COMMERCIAL MARINAS AND OTHER WATER-DEPENDENT COMMERCIAL MARITIME FACILITIES AND ACTIVITIES.	31

Flexible Provisions



Jurisdictions can create local provisions that are “at least as effective” as the Commission’s Laws and Regulations, for example:

- Growth Allocation non-adjacency standards
- Buffer provisions (Parent Parcel Language)
- RCA Uses
- Fee in Lieu
- Climate Resiliency

Collaboration



- Reach out to Commission staff early and often.
- Available to meet and discuss process and provisions.
- Available to meet and discuss with Town Commissioners/Council.
- Can review draft documents and discuss flexible alternative provisions.





Q&A with Dianne Klair, City of Havre de Grace

Thank you!

See you
next time!

