

State Hazard Mitigation Updates

JaLeesa Tate, CFM
State Hazard Mitigation Officer and
Hazard Mitigation Branch



Maryland

EMERGENCY
DEPARTMENT OF
EMERGENCY MANAGEMENT

Larry Hogan | Governor

Boyd K. Rutherford | Lt. Governor

Russell J. Strickland | Acting Secretary

Larry Hogan | Governor

Boyd K. Rutherford | Lt. Governor

Russell J. Strickland | Executive Director

MDEM.MARYLAND.GOV

National Infrastructure Package

Emergency management and homeland security priorities:

- \$1 billion in additional funds for the Building Resilience Infrastructure in Communities (BRIC) program;
- \$733 million in dam safety;
- \$500 million pursuant to the STORM Act to fund state revolving loan funds to support local mitigation projects;
- \$3.5 billion for Flood Mitigation Assistance, and;
- \$1 billion (over five years) for a state and local cybersecurity grant program.



Maryland

DEPARTMENT OF
EMERGENCY MANAGEMENT

[MDEM.MARYLAND.GOV](https://www.mdem.maryland.gov)

HMA Grant Programs Update

- FY20 BRIC and FMA
 - 2 competitive projects
 - 9 State set aside projects
 - \$33,059,169.51 Federal Share
- FY21 [BRIC](#) and [FMA](#)
 - \$1B available for BRIC and \$160M for FMA
 - State set aside increased to \$1M
 - Focus on equity, climate resilience/adaptation, and building codes
 - Partially implements the Federal Flood Risk Management Standard
 - MEMA has received over 130 NOIs requesting approximately \$300M
- DR-4583 HMGP: TS Isaias
 - Approximately \$1M available
 - Prioritizing St. Mary's, Calvert, and Dorchester
- DR-4491 HMGP: COVID-19
 - Approximately \$78M available
 - Will prioritize NOIs received by the August 31st deadline



Maryland

DEPARTMENT OF
EMERGENCY MANAGEMENT

[MDEM.MARYLAND.GOV](https://www.mdem.maryland.gov)

Notable Changes from 2020 for FMA

- Partial Implementation of the Federal Flood Risk Management Standards as referenced in Executive Order 14030 – Climate-Related Financial Risk - Requires 2ft. freeboard
- Total funding available for Project Scoping increased to \$10 million
- Increase in cap for community flood mitigation Project Scoping subapplications: For FY21, \$900,000 per subapplication
- Separate cap for individual flood mitigation Project Scoping subapplications: For FY21 \$300,000 per subapplication
- Introduction of the Centers for Disease Control and Prevention (CDC) Social Vulnerability Index (SVI) scores into priority scoring criteria for Project Scoping and Community Flood Mitigation projects



Maryland

DEPARTMENT OF
EMERGENCY MANAGEMENT

[MDEM.MARYLAND.GOV](https://www.mdem.maryland.gov)

Notable Changes from 2020 for BRIC

- Increases the state allocation to \$1 million, which includes increase in mitigation planning and related activities to \$500,000
- Continues to incentivize the adoption of building codes based on the latest published editions of building codes
- Includes a new priority to enhance climate resilience and adaptation
- New priority to to incentivize activities that mitigate risk to public infrastructure and includes disadvantaged communities as defined in [Executive Order 14008](#) – Tackling the Climate Crisis at Home and Abroad
- Revises the title of a “Small Impoverished Community” to “Economically Disadvantaged Rural Communities”
- Prioritizes assistance that benefits disadvantaged communities as referenced in Executive Order 14008 - Tackling the Climate Crisis at Home and Abroad, in line with the Administration’s [Justice40 Initiative](#) to promote equity



Maryland

DEPARTMENT OF
EMERGENCY MANAGEMENT

[MDEM.MARYLAND.GOV](https://www.mdem.maryland.gov)

Notable Changes from 2020 for BRIC

- Revises the population impacted, outreach activities, and leveraging partners qualitative criteria to emphasize equity considerations through further assessment of vulnerable communities, a broadened range of stakeholder input and more varied partnerships
- Doubles the number of communities to which FEMA is offering non-financial Direct Technical Assistance
- Partially implements the [Federal Flood Risk Management Standard](#) in other eligibility criteria as referenced in Executive Order 14030 – Climate-Related Financial Risk: Requires 2ft. freeboard

2021 Hazard Mitigation Plan Goals

1. Protect life, property, the economy, and the environment from hazard events to the greatest extent possible.
2. Increase public awareness of potential hazards, mitigation actions, preparedness efforts, and resiliency planning.
3. Protect State assets, infrastructure, and critical facilities from hazard events.
4. Enhance coordination across the whole community, to include Federal, State, and local government, and non-governmental organizations, by strengthening existing, and creating new, linkages between state and local mitigation and resiliency efforts.
5. Promote actions that protect natural resources, while enhancing hazard mitigation and community resiliency.



Maryland

DEPARTMENT OF
EMERGENCY MANAGEMENT

[MDEM.MARYLAND.GOV](https://www.mdem.maryland.gov)

2021 Hazard Mitigation Plan Goals

6. Identify and implement projects that will reduce the impacts of hazards and efficiently use State resources.
7. Integrate hazard mitigation planning into other State planning efforts (comprehensive plan, floodplain management regulations, land use/zoning, green infrastructure, etc.) and encourage and educate counties and municipalities to integrate across local plans and ordinances.
8. Reduce flood-related losses, with an emphasis on reducing Repetitive Loss (RL) and Severe Repetitive Loss (SRL) properties over the next hazard mitigation planning cycle.
9. **Identify and reduce flood hazard impacts in areas outside of the Special Flood Hazard Area (SFHA), which have experienced increased frequency and intensity in flooding, but do not meet FEMA's RL and SRL criteria.**
10. Promote the development of policies, programs, initiatives, and projects which prioritize diversity, equity, and environmental justice.



Maryland

DEPARTMENT OF
EMERGENCY MANAGEMENT

[MDEM.MARYLAND.GOV](https://www.mdem.maryland.gov)

2021 Hazard Mitigation Plan Actions

- Local Plans and Regulations
- Structure and Infrastructure Projects
- Natural Systems Protections
- Education and Awareness Programs
- MEMA Specific Actions
- Energy and Utility Security
- Public Health



Maryland

DEPARTMENT OF
EMERGENCY MANAGEMENT

[MDEM.MARYLAND.GOV](https://www.mdem.maryland.gov)

Stakeholder Engagement

- 5 Regional HIRA Meetings
 - Region Specific:
 - Western – concerns with dam information
 - Central – review thunderstorm and extreme temperature risk data
 - Southern – Review flooding against August 2020 flood data
 - Upper Eastern Shore – review the dam information, specifically around Conowingo
 - Lower Eastern Shore – no issues raised
- 5 Regional Mitigation Actions Meetings
- Received 1st place Communications Award for Public Flood Awareness from the National Association of Flood & Stormwater Management Agencies

**STATE OF MARYLAND
HAZARD MITIGATION
PLAN UPDATE**

Come explore
Maryland Emergency Management Agency's
360° virtual open house space

- ✓ Participate in the State Hazard Mitigation Planning process
- ✓ Access the Community Vulnerability Engagement Tool
- ✓ Review materials, provide input and more

<https://aecoviz.com/MEMA-Maryland-360/>
Open 24/7 — We look forward to your participation!

Hazard Identification and Risk Assessment (HIRA)

- All hazards approach
 - Natural
 - Technological
 - Human-caused / Man-made
- Built upon hazards identified in 2016
 - Coastal
 - Winter Storm
 - Tornado
 - Wind
 - Thunderstorm
 - Wildfire
 - Drought
 - Flood
- Incorporated new hazards for 2021
 - Soil Movement
 - Public Health Emergencies
 - Dam Risks
 - Extreme Temperatures
 - Human-caused hazards and threats



Maryland

DEPARTMENT OF
EMERGENCY MANAGEMENT

[MDEM.MARYLAND.GOV](https://www.mdem.maryland.gov)

Hazard Identification and Risk Assessment (HIRA)

Nine parameters:

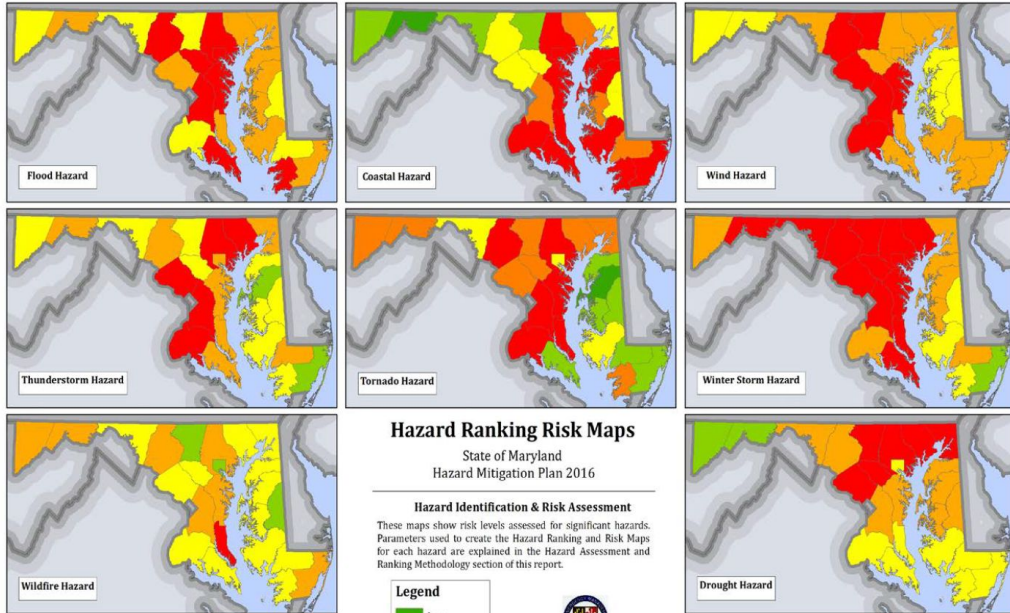
- Population Vulnerability
- Population Density
- Injuries
- Deaths
- Property Damage
- Crop Damage
- Events
- Geographic Extent
- Local Hazard Ranking

Weighted Risk Factors

Population Vulnerability	<i>PV</i>	0.5
Population Density	<i>PN</i>	0.5
Injuries	<i>IN</i>	1
Deaths	<i>DT</i>	1
Property Damage (Annualized)	<i>PD</i>	1
Crop Damage (Annualized)	<i>CD</i>	1
Events (Annualized)	<i>EV</i>	1
Geographic Extent (Hazard Dependent)	<i>GE</i>	1.5
Local Plan Ranking	<i>LOCAL</i>	1.5

		Existing Hazards 2016 Plan									
		Jurisdiction	Coastal Hazards	Drought	Flood	Thunderstorm	Tornado	Wildfire	Wind	Winter Storm	
Western	Allegany	Low	Medium-Low	Medium-Low	Medium-High	Medium-High	Medium-High	Medium-High	Medium	High	
	Garret	Medium-Low	Medium-Low	Medium-Low	Medium	Medium	Medium-High	Medium-High	Medium	High	
	Washington	Medium-Low	Medium-High	Medium	Medium	Medium	Medium-High	Medium-High	Medium-High	High	
	Dorchester	High	Medium	Medium-High	Medium	Medium	Medium	Medium	Medium-High	Medium	
	Somerset	High	Medium	Medium-High	High	Medium	Medium-Low	Medium	Medium-High	Medium	
	Wicomico	Medium-High	Medium	Medium	Medium	Medium-High	Medium-Low	Medium	Medium-High	Medium-High	
	Worcester	High	Medium	Medium	Medium-High	Medium-High	Medium-Low	Medium-High	Medium-High	Medium-Low	
	Frederick	Medium	Medium-High	Medium-High	Medium-High	High	Medium-High	High	High	High	
	Montgomery	Medium	High	High	High	High	High	High	High	High	
	Prince George's	Medium-High	Medium-High	Medium-High	High	High	High	Medium-High	High	High	
Central	Harford	Medium-High	High	High	Medium-High	High	Medium-High	Medium	Medium-High	High	
	Howard	Medium	High	High	High	High	Medium-High	Medium	Medium-High	High	
	Baltimore City	High	Medium	High	Medium-High	Medium	Medium-Low	Medium-High	Medium-High	High	
	Anne Arundel	High	Medium-High	High	Medium-High	High	Medium-High	High	High	High	
	Baltimore County	High	High	High	High	High	High	Medium-High	Medium-High	High	
	Carroll	Medium-Low	High	Medium	Medium	Medium-High	Medium-High	High	High	High	
	Calvert	High	Medium	Medium-High	Medium-High	High	High	Medium-High	High	High	
	Charles	High	Medium	Medium	High	High	High	Medium	Medium-High	Medium-High	
	St. Mary's	High	Medium	High	High	Medium-High	Medium-High	Medium	Medium-High	High	
	Queen Anne's	High	Medium-High	Medium-High	Medium-High	Medium-Low	Low	Medium	Medium	Medium-High	
Eastern Shore	Talbot	Medium-High	Medium-High	Medium-High	Medium	Medium-Low	Medium	Medium	Medium	Medium-High	
	Caroline	Medium	Medium-High	Medium	Medium	Medium-Low	Medium-Low	Medium	Medium	Medium	
	Cecil	Medium	High	Medium-High	Medium-High	Medium-High	Medium-High	Medium	Medium-High	Medium-High	
	Kent	High	Medium-High	Medium-High	Medium	Low	Medium	Medium	Medium	Medium-High	
			Updated Hazards 2021 Plan								
			Jurisdiction	Coastal Hazards	Drought	Flood	Thunderstorm	Tornado	Wildfire	Wind	Winter Storm
	Western	Allegany	Low	Medium-Low	Medium-Low	Medium	Medium	Medium-High	Medium-High	Medium	High
		Garret	Medium-Low	Medium-Low	Medium-Low	Medium	Medium	Medium-High	Medium-High	Medium	Medium-High
		Washington	Medium-Low	Medium	Medium	Medium	Medium	Medium-High	Medium-High	Medium	Medium-High
		Dorchester	High	Medium-High	Medium-High	Medium-High	Medium	Medium-High	Medium	Medium-High	Medium
Somerset		High	Medium-High	Medium-High	Medium-High	Medium	Medium-Low	Medium	High	Medium	
Wicomico		Medium-High	Medium-High	Medium	Medium	Medium	Medium	Medium	Medium-High	Medium-High	
Worcester		High	Medium	Medium	Medium-High	Medium	Medium	Medium-High	Medium-High	Medium-Low	
Frederick		Medium	High	High	High	High	High	High	High	High	
Montgomery		Medium	High	High	High	High	High	High	High	High	
Prince George's		High	Medium-High	Medium-High	High	High	High	Medium-High	High	High	
Central	Harford	Medium-High	High	High	High	High	High	Medium	Medium-High	Medium-High	
	Howard	Medium	Medium-High	High	High	High	High	Medium	Medium-High	High	
	Baltimore City	High	Medium-High	High	Medium-High	Medium	Medium-Low	High	High	High	
	Anne Arundel	High	Medium-High	High	Medium-High	High	High	Medium-High	High	High	
	Baltimore County	High	High	High	High	High	High	Medium-High	High	High	
	Carroll	Medium-Low	High	Medium	Medium	Medium-High	Medium-High	Medium-Low	High	High	
	Calvert	High	Medium	Medium	Medium	Medium-High	High	High	High	Medium-High	
	Charles	High	Medium	Medium	High	High	High	Medium	High	Medium-High	
	St. Mary's	High	Medium-High	Medium-High	Medium-High	Medium-High	Medium-High	Medium	High	High	
	Queen Anne's	High	Medium-High	Medium-High	Medium-High	Low	Medium	Medium	High	Medium-High	
Eastern Shore	Talbot	Medium-High	Medium-High	Medium-High	Medium	Medium-Low	Medium	Medium-High	Medium-High	Medium-High	
	Caroline	Medium	Medium-High	Medium-High	Medium-High	Medium	Medium-Low	Medium-Low	Medium-High	Medium	
	Cecil	Medium	Medium-High	Medium-High	Medium-High	Medium-High	Medium	Medium	High	Medium-High	
	Kent	Medium-High	Medium	Medium	Medium	Medium-High	Medium-Low	Medium	Medium-High	Medium	

Hazard Rankings 2016 vs. 2021

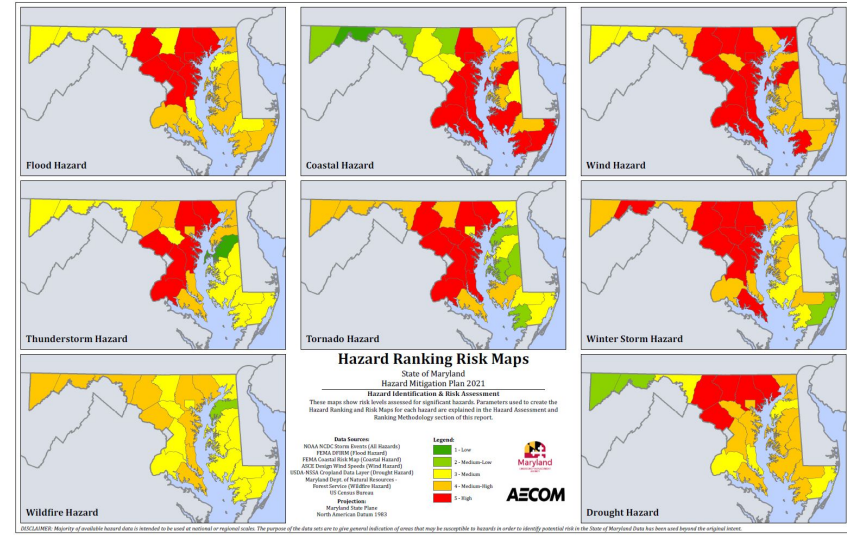


Projection
North American Datum 1983
Maryland State Plane Feet

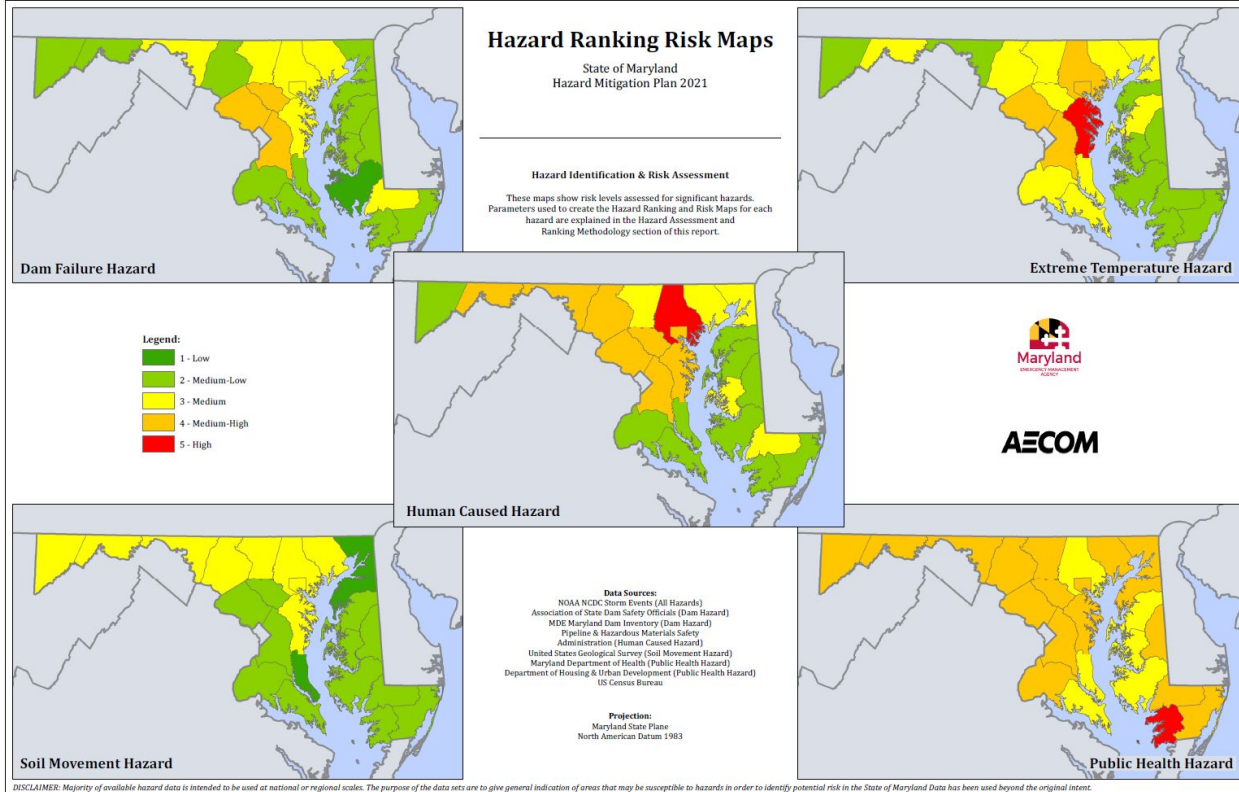
Data Sources
NOAA NCEC Storm Events (All Hazards)
FEMA OFEM (Flood Hazard)
FEMA Coastal Risk Map (Coastal Hazard)
ACEC Design Wind Speeds (Wind Hazard)
USDA-NRCS Cropland Data Layer (Drought Hazard)
Maryland Dept. of Natural Resources - Forest Service (Wildfire Hazard)
US Census Bureau (2014)



DISCLAIMER: Majority of available hazard data is intended to be used at national or regional scales. The purpose of the data sets are to give general indication of areas that may be susceptible to hazards in order to identify potential risk in the State of Maryland. Data has been used beyond the original intent.



Hazard Rankings for New Hazards in 2021



Repetitive Loss Strategy

2016 Plan (BureaNet):

- 964 non mitigated RL structures
- 16 validated Severe Loss structures

2021 data (PIVOT):

- 1,153 non mitigated RL structures
- 107 Severe Loss structures

Between 2016 and now there has been some significant flooding, so the net increase of 189 RL properties (19%) could be realistic.

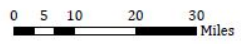
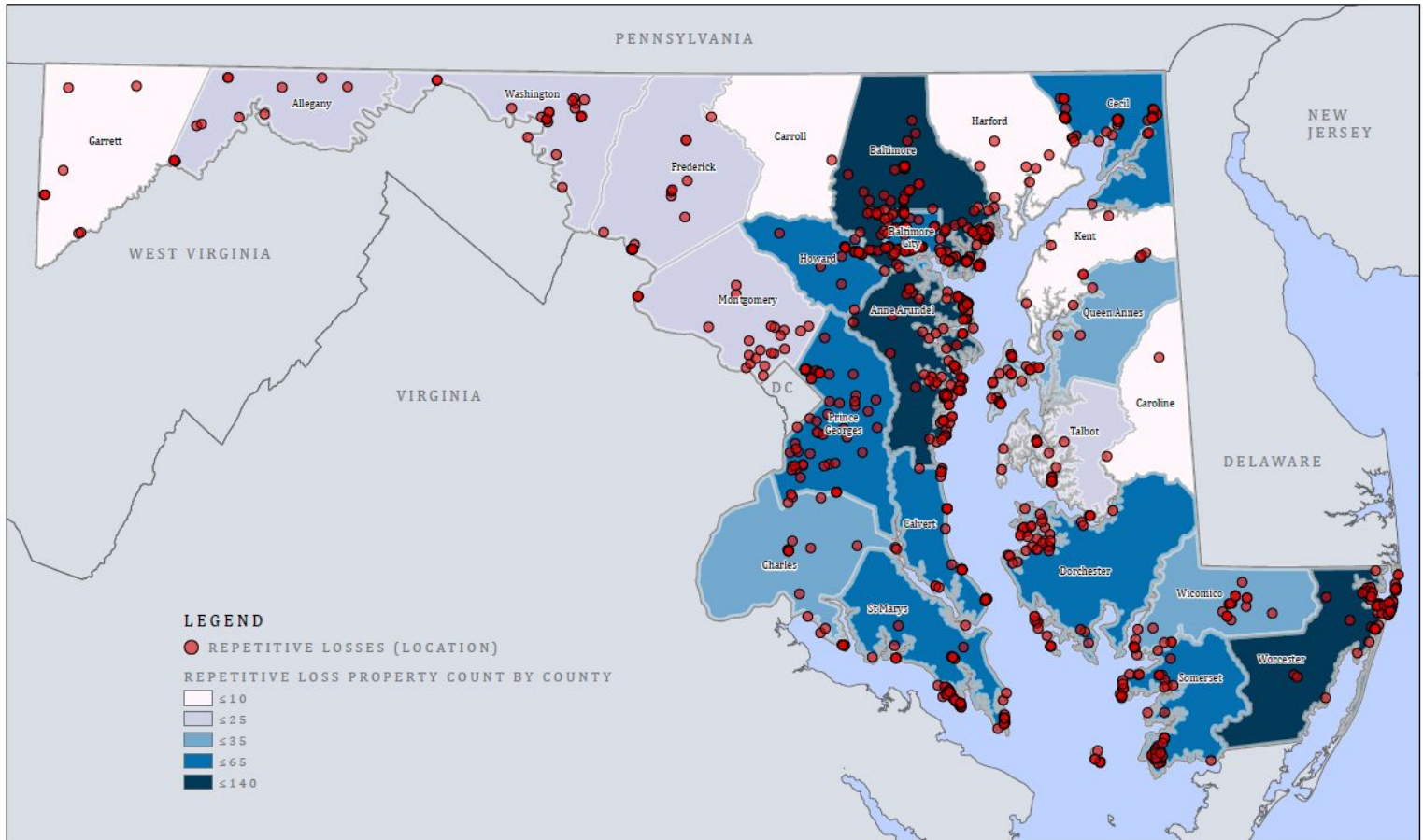
The net increase of 91 SRL properties (568%) seems abnormally high. This could be from the potential that in the move to the Pivot system, SRL properties that were classified as validated and pending were lumped together.



Maryland

DEPARTMENT OF
EMERGENCY MANAGEMENT

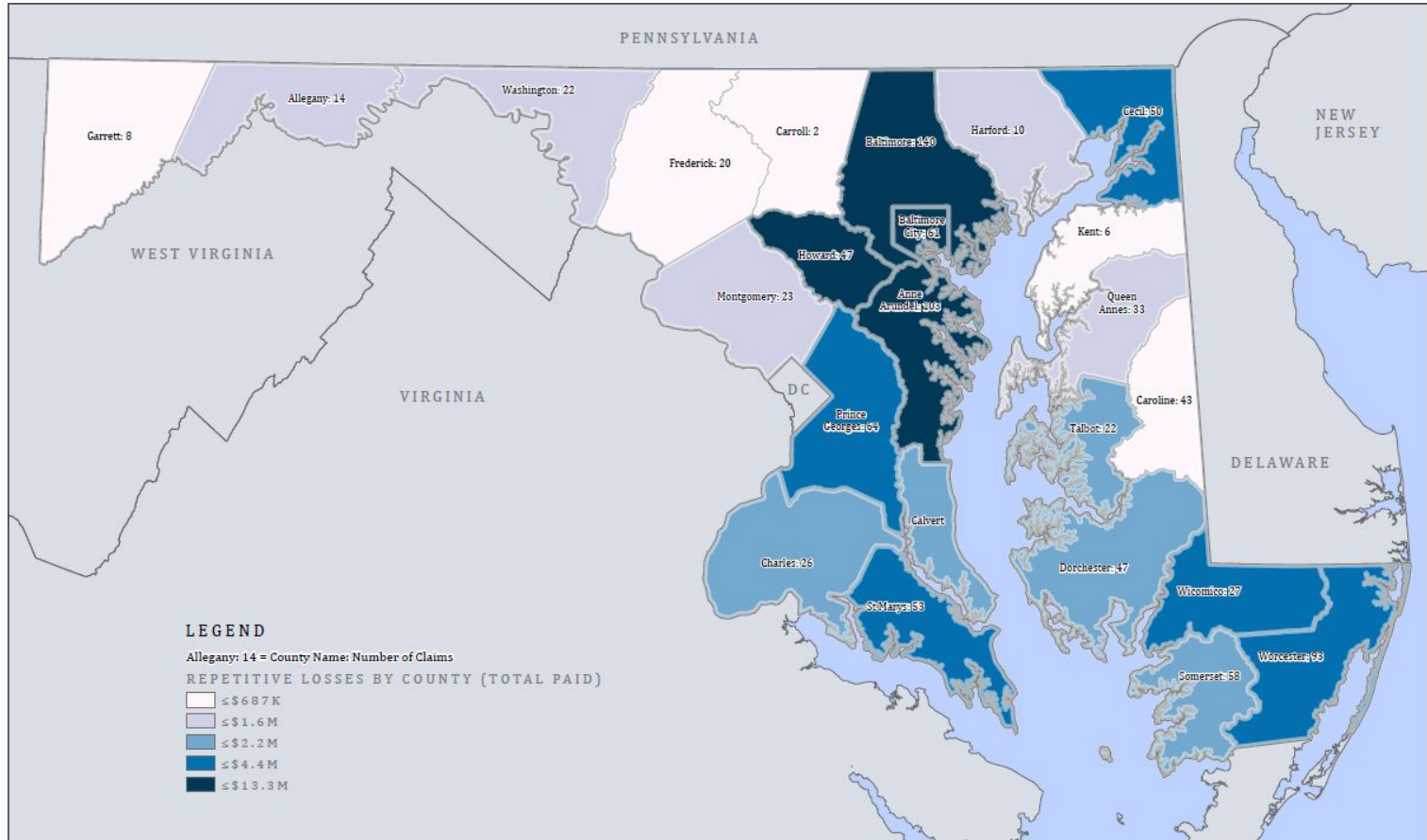
MDEM.MARYLAND.GOV



RL Number of Claims by Jurisdiction

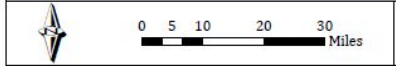
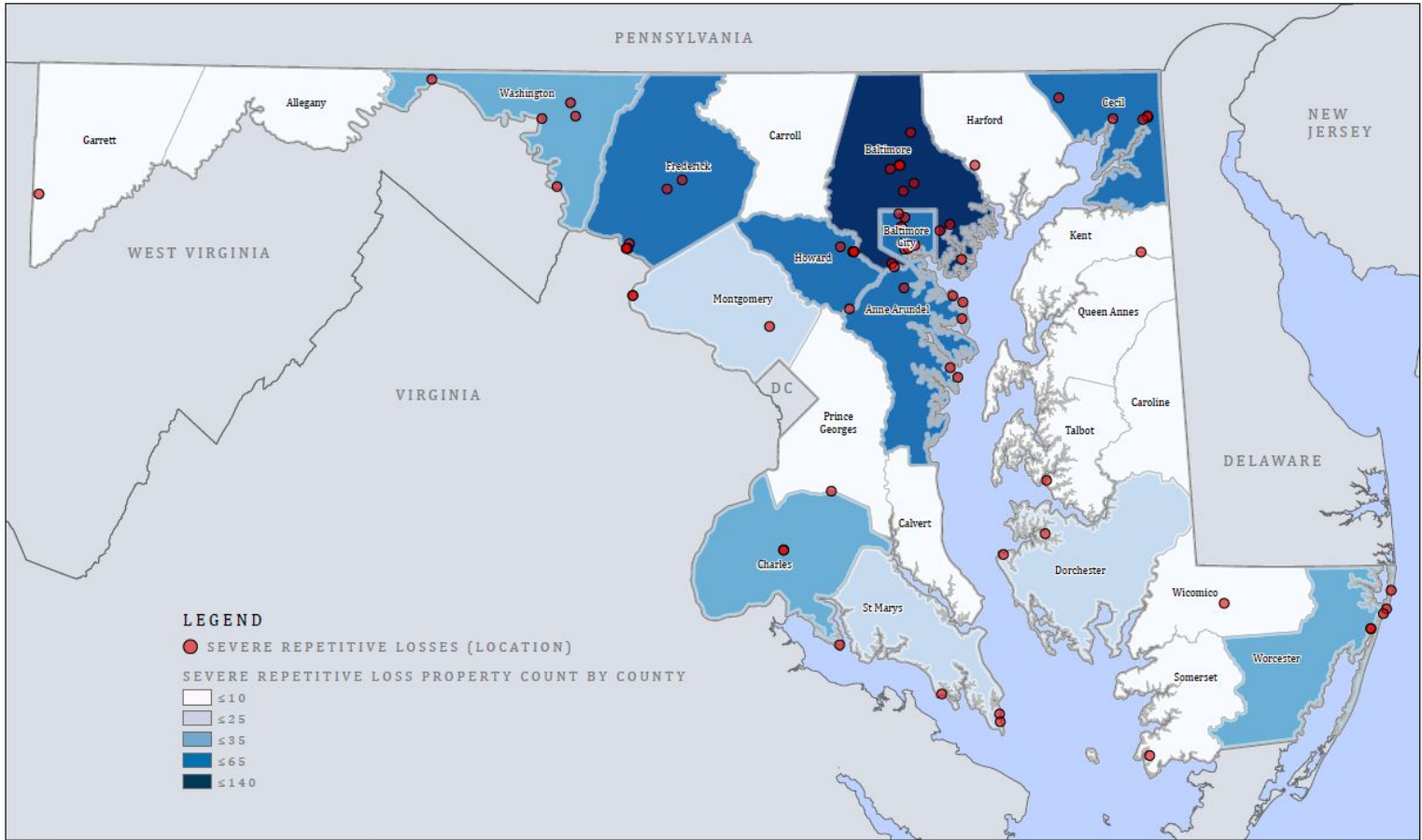
AECOM





RL Number of Claims by Jurisdiction

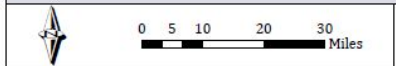
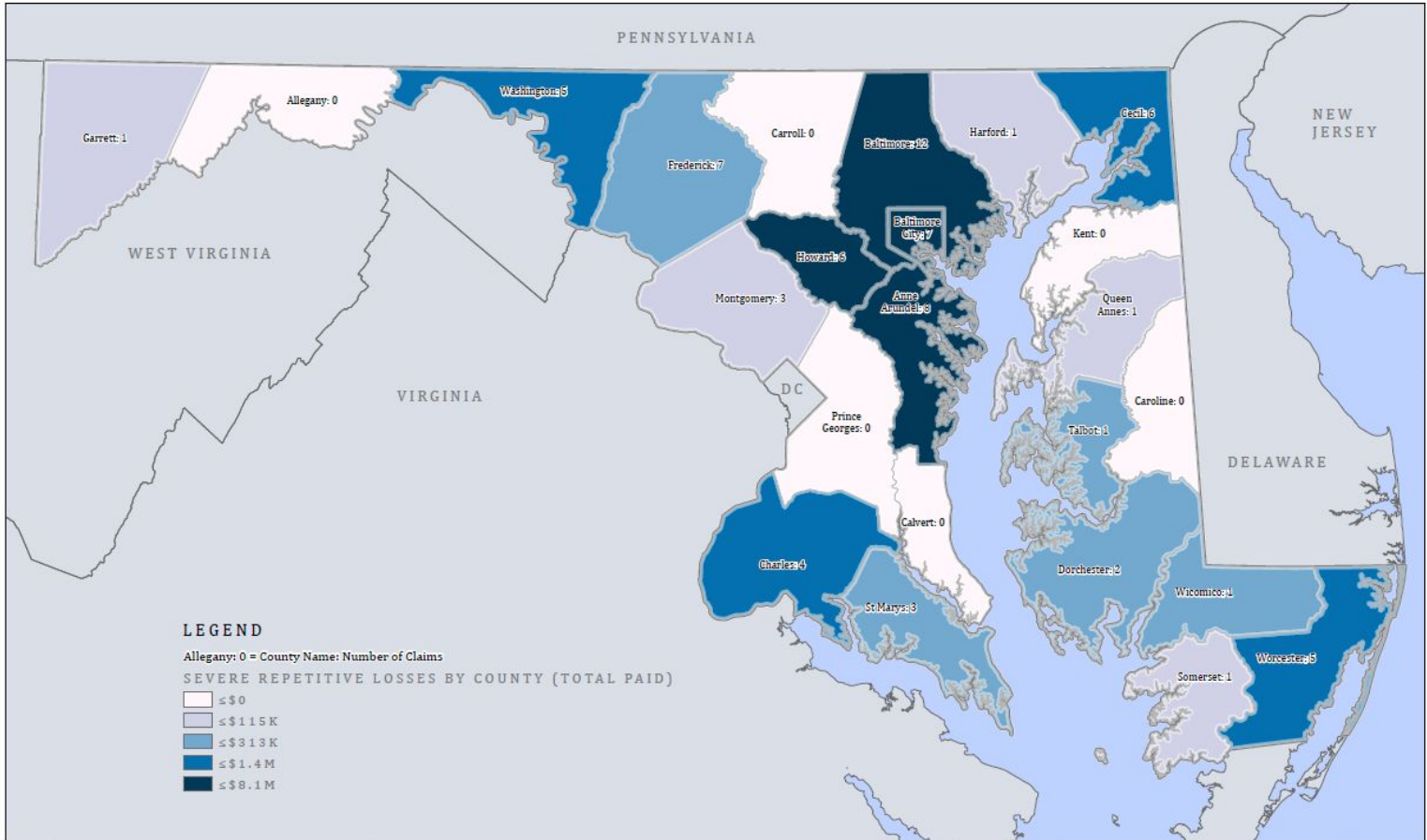




SRL Number of Claims by Jurisdiction

AECOM





SRL Number of Claims by Jurisdiction





The mission of the Maryland Department of Emergency Management is to proactively reduce disaster risks and reliably manage consequences through collaborative work with Maryland's communities and partners.

mitigation.mdem@maryland.gov



MDEM.MARYLAND.GOV