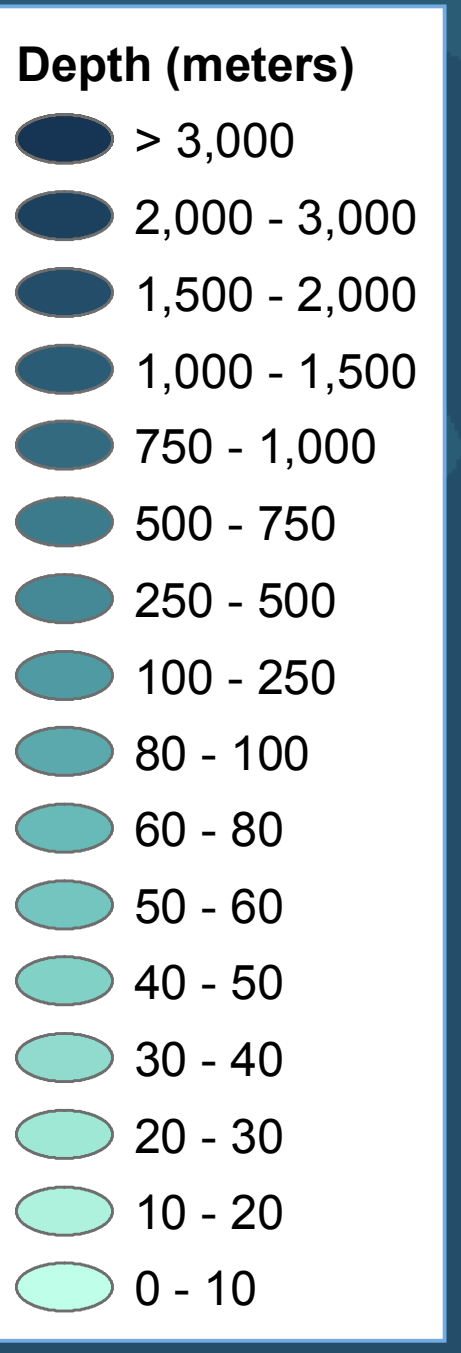
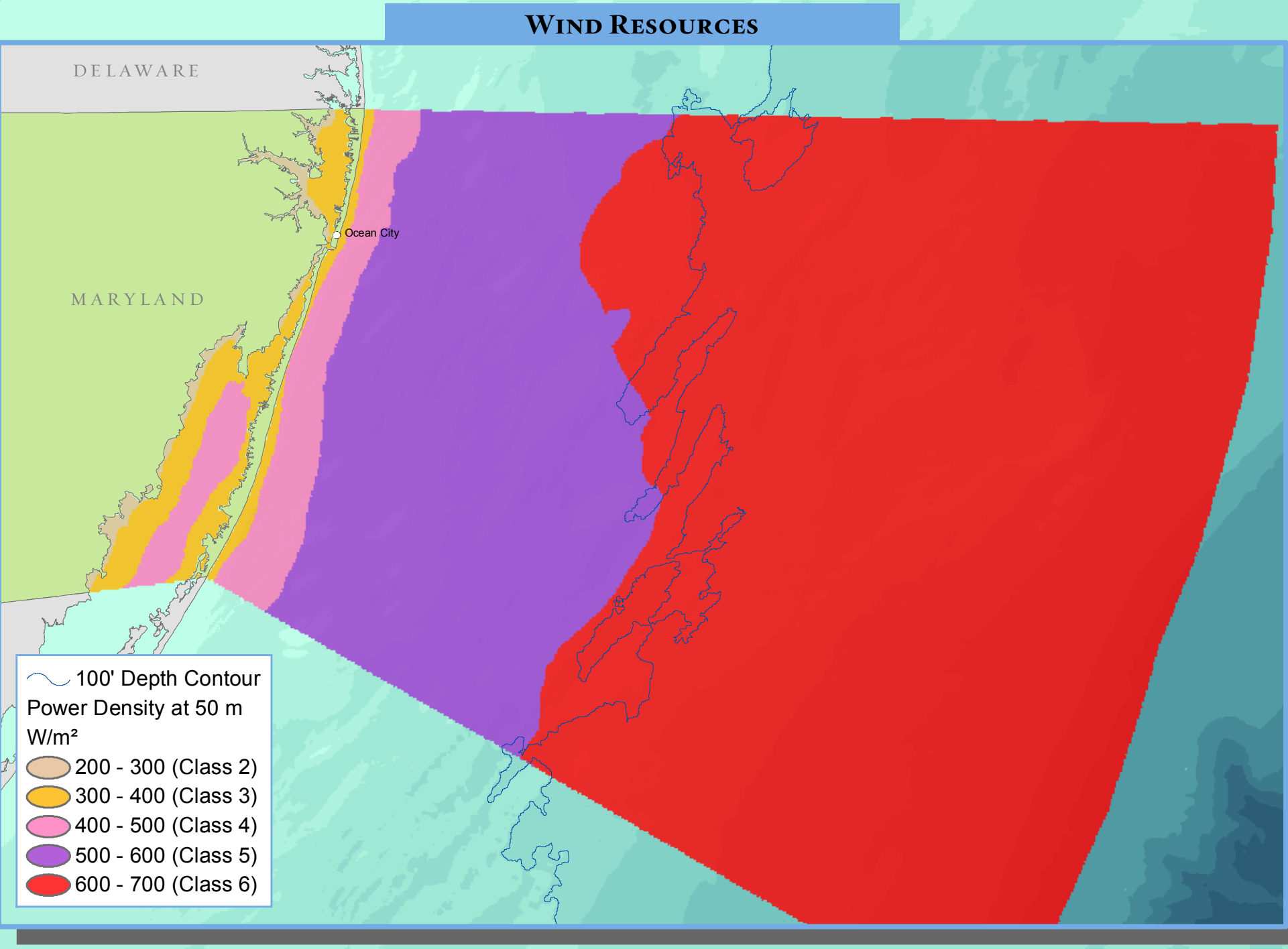
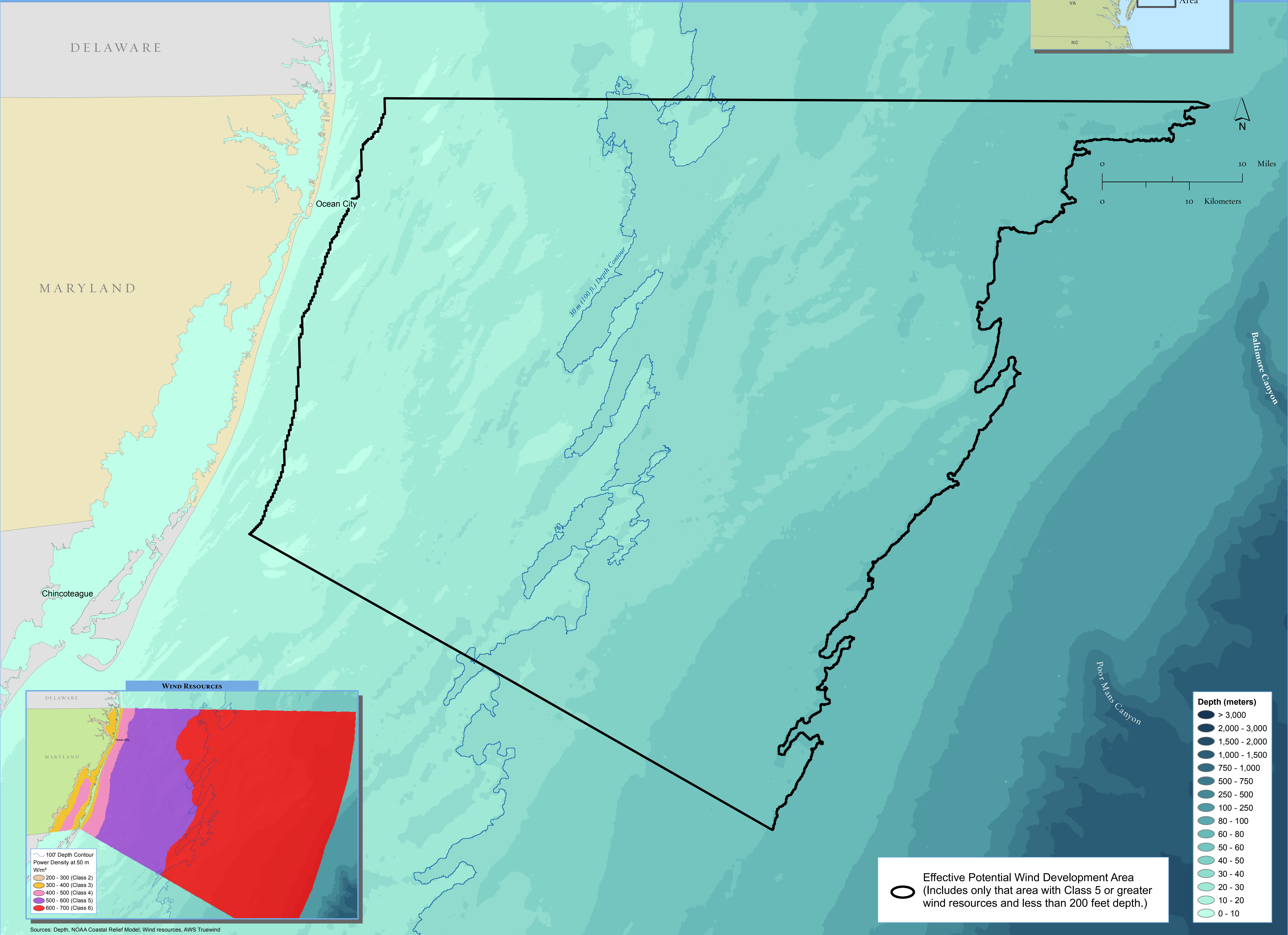
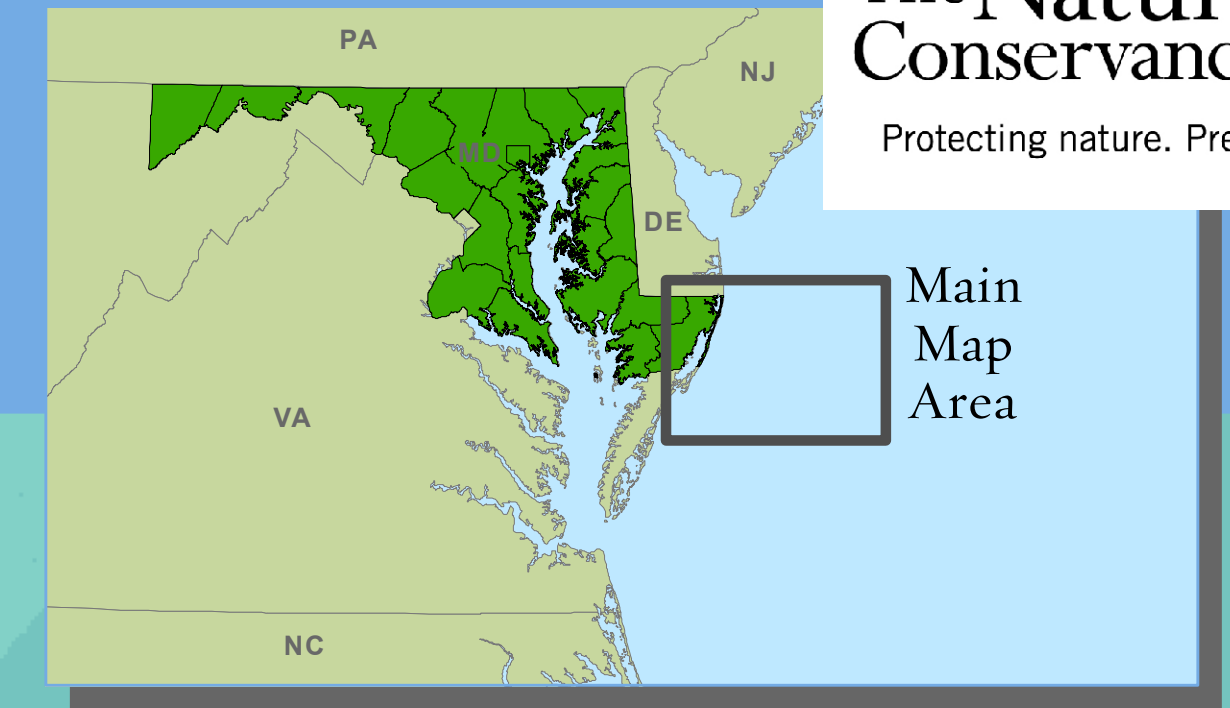


MARYLAND COASTAL ATLAS: EFFECTIVE POTENTIAL WIND DEVELOPMENT AREA



Effective Potential Wind Development Area
(Includes only that area with Class 5 or greater wind resources and less than 200 feet depth.)

Sources: Depth, NOAA Coastal Relief Model; Wind resources, AWS Truewind