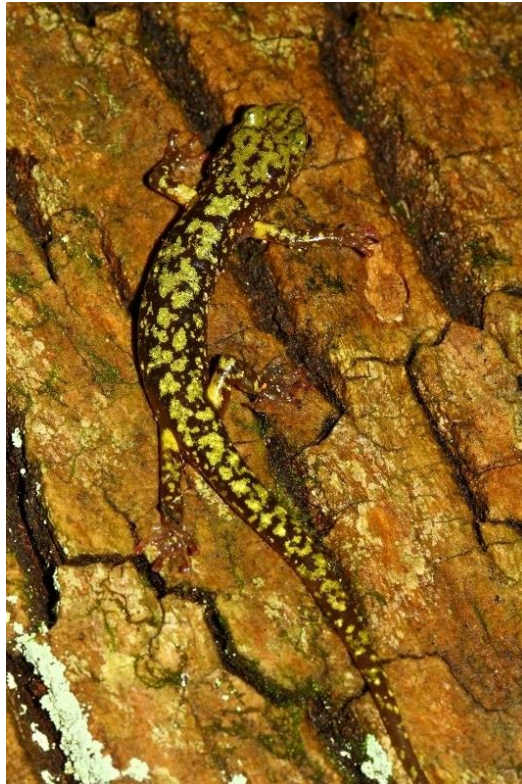


List of Rare, Threatened, and Endangered Animals of Maryland

December 2025



Maryland Wildlife and Heritage Service
Natural Heritage Program





Wes Moore, Governor
Aruna Miller, Lt. Governor
Josh Kurtz, Secretary
David Goshorn, Deputy Secretary



Wildlife & Heritage Service

Natural Heritage Program
Tawes State Office Building, E-1
580 Taylor Avenue
Annapolis, MD 21401
410-260-8540
Fax 410-260-8596
dnr.maryland.gov/wildlife

Additional Telephone Contact Information:
Toll free in Maryland: 877-620-8DNR ext. 8540 OR
Individual unit/program toll-free number
Out of state call: 410-260-8540
Text Telephone (TTY) users call via the Maryland Relay

The facilities and services of the Maryland Department of Natural Resources are available to all without regard to race, color, religion, sex, sexual orientation, age, national origin or physical or mental disability. This document is available in alternative format upon request.

Cover photo: Green Salamander (*Aneides aeneus*), endangered in Maryland. (Photo credit: Ed Thompson)

ACKNOWLEDGMENTS

The Maryland Department of Natural Resources would like to express sincere appreciation to the many scientists and naturalists who willingly share information and provide their expertise to further our mission of conserving, protecting, and restoring Maryland's natural heritage.

This document is made possible by taxpayer donations to Maryland's Chesapeake Bay and Endangered Species Fund.

Suggested citation: Maryland Natural Heritage Program. 2025. List of Rare, Threatened, and Endangered Animals of Maryland. Maryland Department of Natural Resources, 580 Taylor Avenue, Annapolis, MD 21401.

INTRODUCTION

The following list comprises 549 native Maryland animals that are among the least understood, the rarest, and the most in need of conservation efforts. It includes species occurring in Maryland that are on the federal list of Endangered and Threatened Wildlife and Plants under the Endangered Species Act (ESA), species currently on the State's Threatened and Endangered Species list, and additional species that are considered rare or under assessment by the Wildlife and Heritage Service. The purpose of this list is to inform the public of rare species, to provide an indication of their degree of rarity, to solicit additional information on the status and distribution of these species, and to promote an interest in their conservation. For more information about Maryland's wildlife, habitats, and their conservation, see the 2015 Maryland State Wildlife Action Plan, available at: dnr.maryland.gov/wildlife/Pages/plants_wildlife/SWAP_home.aspx

Compiled by Wildlife and Heritage Service staff and conservation partners, this list of rare species is a result of more than 45 years of effort to gather, research, and analyze data from numerous sources, such as museums, scientific literature, unpublished documents, reports from zoologists and amateur naturalists, and extensive field work conducted by scientists from the Department of Natural Resources (DNR). Our knowledge of Maryland's fauna has grown steadily. Field surveys and studies conducted by Wildlife and Heritage Service biologists and cooperators have led to the rediscovery of species previously thought to be extirpated from the state, as well as the discovery of species previously unrecorded in Maryland, including some species new to science. Similarly, some species are now known to be either rarer or more common than were previously believed. Collectively, these efforts have contributed to a better understanding of the status, distribution, abundance, ecology, and conservation needs of the state's fauna. Thus, this list and the conservation rank and legal status of each species are periodically revised to keep pace with new information. The list was first published in 1984, and its most recent revision was in 2023.

The primary Maryland law (enacted in 1975) that governs the legal listing of threatened and endangered species is the Nongame and Endangered Species Conservation Act (Annotated Code of Maryland 10-2A-01). The Act is supported by regulations (Code of Maryland Regulations, COMAR 08.03.08) that define listing criteria for endangered, threatened, in need of conservation, and endangered extirpated species; lists the species included in each category; establishes the purpose and intent of research and collection permits; and lists prohibited activities. Maryland regulations may be found online at: dsd.state.md.us/COMAR/ComarHome.html

The Wildlife and Heritage Service (the Service) within DNR is the lead state agency responsible for the identification, ranking, protection, and management of rare and endangered species and natural communities in Maryland. The Service seeks to identify and sustain populations of rare plants and animals through the maintenance of healthy natural ecosystems. The Service maintains a database of natural areas and occurrences of rare, threatened, and endangered plant and animal species. This database is aligned with the NatureServe network, an international association of over 80 programs that tracks and monitors species and plant communities using identical methodologies across the U.S., Canada, and Latin America. Wildlife and Heritage Service biologists are concerned with many more species than those included on Maryland's Threatened and Endangered Species list. Some of these species are potential candidates for listing and usually require further investigation into their conservation status. Others are thought to be secure at present but are worthy of attention because of limited distributions, declining populations, or other ecological vulnerabilities.

The Maryland Department of Natural Resources Fisheries Service maintains an official list of game and commercial fish species that are legally designated as endangered, threatened, or in need of conservation in Maryland. The list of Endangered and Threatened Fish Species (COMAR 08.02.12) can be obtained by contacting the Fishing and Boating Services, Department of Natural Resources, Tawes State Office Building, Annapolis, MD 21401 or by visiting their website at: dnr.maryland.gov/fisheries/Pages/endangered.aspx.

GUIDE TO THE LIST

This list of rare, threatened, and endangered animal species is arranged phylogenetically, with invertebrate groups listed before vertebrate groups. Within each group, species are listed alphabetically by scientific name. Space limitations preclude inclusion of the scientific authors' names for the taxa in this list. Some invertebrate groups are not fully represented or are entirely absent from this list. Available information has been compiled for only certain species or groups of invertebrates. Many invertebrate species are not well known and have not been sufficiently researched or surveyed in Maryland.

Birds and other migratory species are primarily of conservation concern to the Service on the basis of their breeding status. For example, Dark-eyed Juncos breed in only a few remote areas in western Maryland during the summer, but are abundant backyard birds during the winter. To be included on the official State Threatened and Endangered

Species List, migrants that are rare Maryland breeders must also be rare during the non-breeding season. Thus, the Dark-eyed Junco cannot be legally listed as Endangered, Threatened, or In Need of Conservation under current listing criteria. However, some birds, such as the Red Knot, and other migratory species, such as whales and sea turtles, have been included because of their federal legal status even though they typically do not breed in Maryland.

Each page of the following list includes six columns, titled (from left to right) Scientific Name, Common Name, Global Rank (G rank), State Rank (S rank), State Status (if any), and Federal Status (if any). Because taxonomists periodically update scientific names, the most relevant synonyms are embedded within the list inside brackets. Common names, global ranks, and state ranks may also be found at the NatureServe Explorer website at: explorer.natureserve.org/. At the end of the list are two appendices:

Appendix I details the changes to species' state ranks and statuses since the last publication of the list in November 2023.

Appendix II contains a list of species with unusual, non-standard ranks and has been provided to clarify their current conservation status in Maryland.

UNDERSTANDING CONSERVATION STATUS RANK AND LEGAL STATUS

Conservation status ranks are intended to indicate risk of elimination or extinction in the foreseeable future and are arranged along a simple numerical scale (1-5) with the lower numbers reflecting increasing rarity and risk. Conservation status ranks also present geographic information about rarity and risk. Subnational or state ranks (S ranks) represent the vulnerability of the species in the state; whereas global ranks (G ranks) represent the imperilment of the species throughout its range (although most species are far from being globally distributed). The status rank of a species is determined through analyses of a number of factors within the pertinent jurisdiction, primarily population number, size, viability, threats, and both short-term and long-term trends. The final metric, a combination of the numeric index (1-5) and the geographic identifier (G or S), distills this large amount of information into a single value. Thus, for a particular species that has a global rank of G1 and a state rank of S1, the species is not only rare and at risk of elimination from within Maryland but also rare throughout its entire range and at risk of extinction. Similarly, an animal with ranks of G5 and S5 indicate that the species is demonstrably secure in Maryland and throughout the species' global range as well.

Most species have single-valued conservation ranks; however, some variations are possible. Range ranks, e.g., G1G2 or S1S3, indicate the (usually narrow) range of uncertainty in the rank. For example, a species may have more populations than is typical of the lower rank, but few are protected; this may affect the viability of the population(s). A taxon (T) rank follows the global (G) rank of the full species as a qualifier to indicate the conservation status of the subspecies, e.g., G5T3. The latter indicates that the subspecies is much rarer or at risk than the full species. A global rank may also be followed by a 'Q'-qualifier to indicate that there are prevailing taxonomic questions for that species (e.g., G4Q). A '?'-qualifier may be used to indicate that there is a level of uncertainty in the global or state rank (e.g., G4? or S2?). Finally, the "!" symbol to the right of a species name indicates that the conservation status of that species is currently under review. For migratory species, state (S) ranks may include a qualifier indicating the numeric value is relevant to its breeding (B) status, non-breeding (N) status, or migrant (M) status within Maryland. Definitions of conservation status ranks and rank qualifiers are presented in Table 1. State ranks for many species are modified as needed to reflect current information. All member programs of the NatureServe Network of Natural Heritage Programs and Conservation Data Centers across the Western Hemisphere use the same ranking system and format. Global ranks are maintained by NatureServe, while the various member programs maintain the subnational or state ranks. This allows direct conservation status comparisons across the political and geographic landscape, and it is one of the most powerful aspects of the Network.

Table 1. Definitions of Global (G) and State (S) Conservation Status Ranks and Rank Qualifiers.

Rank	Definitions of Global / State Ranks
GX or SX	Presumed Extirpated — Species believed to be extirpated from the jurisdiction (i.e. global, or state/province). Not located despite intensive searches of historical sites and other appropriate habitat, and virtually no likelihood that it will be rediscovered.
GH or SH	Historical (Possibly Extirpated) — Known only from historical records and some hope of rediscovery remains. There is some evidence that the species may no longer be present, but not enough to know this with certainty.

G1 or S1	Critically Imperiled / Highly State Rare — At very high risk of extinction or extirpation due to very restricted range, very few populations or occurrences, very steep declines, very severe threats, or other factors. Typically occurring in five or fewer populations.
G2 or S2	Imperiled / State Rare — At high risk of extinction or extirpation due to restricted range, few populations or occurrences, steep declines, severe threats, or other factors. Typically occurring in 6-20 populations.
G3 or S3	Vulnerable / Watchlist — At moderate risk of extinction or extirpation due to a fairly restricted range, relatively few populations or occurrences, recent and widespread declines, threats, or other factors. Typically occurring in 21-80 populations.
G4 or S4	Apparently Secure — At fairly low risk of extinction or extirpation due to an extensive range and/or many populations or occurrences, but with possible cause for some concern as a result of local recent declines, threats, or other factors.
G5 or S5	Demonstrably Secure — At very low risk of extinction or extirpation due to a very extensive range, abundant populations or occurrences, and little to no concern from declines or threats.
S3.1	Vulnerable and Globally Rare — Species is actively tracked by the Service because of the global significance of Maryland occurrences. Although not currently threatened or endangered, Maryland occurrences may be critical to the long-term security of the species.
SU	Status Uncertain — A numerical rank cannot be established with confidence for reasons including lack of historical records, low survey effort, cryptic nature of the species, or concerns that the species may not be native to the state. Uncertainty spans a range of more than three ranks as defined above.
GNR or SNR	Not Ranked — Species has not yet been ranked.
Qualifier	Definitions of Rank Qualifiers
B	Breeding Rank — Indicates the species is a migrant and the rank applies to the status of the breeding population in Maryland.
M	Migrant Rank — Indicates the species is a migrant and the rank applies to the status of the transitional population in Maryland.
N	Non-breeding Rank — Indicates the species is a migrant and the rank applies to the status of the non-breeding population in Maryland. This may include individuals outside the typical breeding season, wintering individuals, or summering non-breeding individuals.
Q	Questionable Taxonomy — Indicates that the taxon has questionable, controversial, or uncertain taxonomic standing, e.g., treated by some authors as a species, whereas others treat it as a subspecies or not at all.
T	Taxon Rank — Indicates that the infraspecific taxon (subspecies) is ranked independently from the typical species.
?	Rank Uncertainty — Indicates uncertainty in the numeric value that may span 2-3 ranks, as defined above.
!	An indicator that the conservation status of that species is currently under review.

Legal status presents a simple hierarchy of endangerment in four categories: Endangered (E), Threatened (T), In Need of Conservation (I), and Endangered Extirpated (X). Definitions of legal statuses are presented in Table 2. Legal protection statuses of species are typically reviewed and updated, if needed, every two to three years. All species listed as threatened or endangered at the federal level also have a legal status within Maryland.

Table 2. Definitions of State and Federal Legal Protection Status.

State Status	Definitions
Endangered (E)	A species whose continued existence as a viable component of Maryland's fauna is determined to be in jeopardy.
Threatened (T)	A species that appears likely, within the foreseeable future, to become endangered in Maryland.
In Need of Conservation (I)	An animal species whose population is limited or declining in Maryland such that it may become threatened in the foreseeable future if current trends or conditions persist.
Endangered Extirpated (X)	A species that was once a viable component of the fauna of Maryland, but for which no naturally occurring populations are known to exist.
(State Status)*	A qualifier denoting the species is listed in a limited geographical area only.
Federal Status	Definitions
Endangered (LE)	Taxa listed as Endangered under the federal ESA; in danger of extinction throughout all or a significant portion of its range.
Threatened (LT)	Taxa listed as Threatened under the federal ESA; likely to become endangered within the foreseeable future throughout all or a significant portion of its range.

ADDITIONAL RESOURCES AND IMPORTANT LINKS

National

The U.S. Department of Interior, Fish and Wildlife Service's (USFWS) Office of Endangered Species publishes a list of federally designated Threatened and Endangered species. Copies of USFWS publications, including *Endangered and Threatened Wildlife and Plants; Review of Plant and Animal Taxa That are Candidates for Listing as Endangered or Threatened Species* may be obtained from the Publication Unit, U.S. Fish and Wildlife Service, Washington DC 20240 or viewed at: [fws.gov/endangered/](https://www.fws.gov/endangered/) or the Office of Federal Register website: [federalregister.gov/agencies/fish-and-wildlife-service](https://www.federalregister.gov/agencies/fish-and-wildlife-service)

Additional protections for most of Maryland's bird species are provided by the Migratory Bird Treaty Act, as enforced by USFWS. Their website can be viewed at: [fws.gov/birds/policies-and-regulations/laws-legislations/migratory-bird-treaty-act.php](https://www.fws.gov/birds/policies-and-regulations/laws-legislations/migratory-bird-treaty-act.php)

The Encyclopedia of Life includes information on such topics as life history, distribution, and taxonomic relationships of all taxa occurring throughout the world at the following link: [eol.org](https://www.eol.org).

NatureServe compiles data from all member programs in the Network of Natural Heritage Programs and Conservation Data Centers and provides a synthesis in the form of species summaries on their Explorer website: explorer.natureserve.org. The state ranks for Maryland shown in NatureServe's online database may be different than in this list due to the timing of data synchronization between the two databases.

Maryland

The Department of Natural Resources (DNR) conserves more than just rare, threatened, and endangered animals in Maryland. The state's reptiles and amphibians are also protected through regulations that limit the numbers and types of species that can be possessed without permits and that list the conditions under which permits from the DNR

would be required. These protections are provided in Code of Maryland Regulations (COMAR) 08.03.11. Furthermore, certain additional nongame mammals are provided protections through regulating activities that require permits under COMAR 08.03.08.15. For more information, regulations can be viewed on the state Division of State Documents website: dsd.state.md.us/COMAR/ComarHome.html

The Natural History Society of Maryland maintains collections of Maryland specimens at: marylandnature.org.

The Maryland Amphibian and Reptile Atlas provides information on the distribution of turtles, lizards, snakes, salamanders, frogs and toads in Maryland at: webapps02.dnr.state.md.us/mara/default.aspx?strSelection=SystemStats

The Maryland Biodiversity Project provides information on all species of animals known to occur in Maryland at: marylandbiodiversity.com/

For more information about Maryland's wildlife, habitats, and their conservation, see the 2015 Maryland State Wildlife Action Plan, available at: dnr.maryland.gov/wildlife/Pages/plants_wildlife/SWAP_home.aspx

To obtain additional copies of this report; to receive a copy of "List of Rare, Threatened, and Endangered Plants of Maryland"; or to receive other information on Maryland's rare species and natural areas; please contact the Maryland Wildlife and Heritage Service at Tawes State Office Building, E-1, 580 Taylor Avenue, Annapolis, MD 21401 or visit the website at: https://dnr.maryland.gov/wildlife/Pages/plants_wildlife/rte/espaa.aspx

The conservation of Maryland's natural communities is vital in sustaining our biodiversity and rare species. These recurring assemblages of plants and animals are uniquely tied to a particular suite of environmental conditions and species adapted to those conditions. More information on Maryland's natural communities can be found at: dnr.maryland.gov/wildlife/Pages/plants_wildlife/nhpnatcomm.aspx

The Maryland Geological Survey (mgs.md.gov/) provides detailed physiographic maps with accompanying explanatory text, available at: mgs.md.gov/geology/physiographic_map.html.

HOW YOU CAN HELP

You can take an active part in conserving Maryland's rare species by contacting the Wildlife and Heritage Service with the following types of information:

I. Submitting information on rare, threatened or endangered species

1. Location details should be included (exact mapped location using GPS is preferred but not required). Online applications such as Google Earth are invaluable but precise, written directions including driving and walking are acceptable.
2. Documentation that includes a photograph, description of the species, identification source, and habitat description should accompany the report.
3. Information on the ecology or biology of the species including observed and/or identified pollinators should accompany the report.

**Additional information, including a downloadable PDF of our rare species reporting form can be found at: dnr.maryland.gov/wildlife/Pages/plants_wildlife/rte_reportinginst.aspx

II. Assisting the Service with conservation status rank assessments

1. Submit data indicating that a species should be assigned a different rank and status, with supporting documentation.
2. Submit nominations of additional species to be included on the list or of species that should be deleted from the list, with supporting documentation.
3. Submit information on historical collections or documentation within scientific literature.

List of Rare, Threatened, and Endangered Animals of Maryland

SCIENTIFIC NAME	COMMON NAME	GLOBAL RANK	STATE RANK	STATE STATUS	FEDERAL STATUS
<u>PLANARIANS</u>					
<i>Paraplanaria dactyligera</i>	A Planarian	GNR	S2		
<i>Phagocata virilis</i>	A Planarian	GNR	S1		
<i>Procotyla typhlops</i>	A Planarian	G1G2	S1	E	
<i>Sphalloplana buchanani</i>	A Cave Obligate Planarian	G1G2	SNR		
<i>Sphalloplana hoffmasteri</i>	Hoffmaster's Cave Planarian	G3G4	S1	E	
<i>Sphalloplana pricei</i>	Refton Cave Planarian	G2G3	SNR		
<i>Sphalloplana sp. 1</i>	A Planarian	GNR	S1S2		
<u>MOLLUSKS</u>					
<i>Alasmidonta heterodon</i>	Dwarf Wedgemussel	G2?	S1	E	LE
<i>Alasmidonta undulata</i>	Triangle Floater	G4	S1S2	T	
<i>Alasmidonta varicosa</i>	Brook Floater	G3	S1	E	
<i>Catinella hubrichti</i>	Snowhill Ambersnail	G3	SNR		
<i>Discus catskillensis</i>	Angular Disc Snail	G5	S1		
<i>Elliptio fisheriana</i>	Northern Lance	G4	S3S4		
<i>Elliptio lanceolata</i>	Yellow Lance	G2	S1	T	LT
<i>Elliptio producta</i>	Atlantic Spike	G3	S2S3	I	
<i>Fontigens bottimeri</i>	Appalachian Springsnail	G2G3	S2	I	
<i>Fontigens orolibas</i>	Blue Ridge Spring Snail	G3	S1	E	
<i>Glyphyalinia picea</i>	Rust Glyph	G3	SU		
<i>Glyphyalinia raderi</i>	Maryland Glyph	G2	SH	X	
<i>Hendersonia occulta</i>	Cherrystone Drop	G4	S2	I	
<i>Lampsilis cariosa</i>	Yellow Lampmussel	G3G4	SU		
<i>Lampsilis radiata</i>	Eastern Lampmussel	G5	SU		
<i>Lasmigona subviridis</i>	Green Floater	G2G3	S1	E	
<i>Leptodea ochracea</i>	Tidewater Mucket	G3G4	S1S2		
[<i>Ligumia nasuta</i>]	see <i>Sagittunio nasutus</i>				
<i>Oxyloma effusum</i>	Coastal-plain Ambersnail	G3	SNR		
<i>Oxyloma subeffusum</i>	Chesapeake Ambersnail	G3	SNR		
<i>Paravitrea pontis</i>	Natural Bridge Supercoil	G3	SNR		
<i>Sagittunio nasutus</i>	Eastern Pondmussel	G3	S1S2		
<i>Stenotrema simile</i>	Bear Creek Slitmouth	G2G3	SU		
<i>Strophitus undulatus</i>	Creeper	G5	S2S3	I	
<i>Triodopsis picea</i>	Spruce Knob Threetooth	G3	S1		
<i>Utterbackia imbecillis</i>	Paper Pondshell	G5	S3		
<i>Utterbackiana implicata</i>	Alewife Floater	G5	S3		
<i>Vertigo ventricosa</i>	Five-tooth Vertigo	G5	SU		
<i>Webbhelix multilineata</i>	Striped Whitelip	G5	S1		
<u>CRUSTACEANS</u>					
<i>Acanthocyclops columbiensis</i>	A Cyclopoid Copepod	G1	SNR		
<i>Ankylocythere tridentata</i>	An Entocytherid Ostracod	G1	SH		
<i>Attheyella spinipes</i>	A Cyclopoid Copepod	GNR	SU		
<i>Caecidotea alleghenyensis</i>	Allegheny Spring Isopod	G1G2	S1	E	
<i>Caecidotea franzi</i>	Franz's Cave Isopod	G2G4	S1	E	

List of Rare, Threatened, and Endangered Animals of Maryland

SCIENTIFIC NAME	COMMON NAME	GLOBAL RANK	STATE RANK	STATE STATUS	FEDERAL STATUS
[<i>Caecidotea holsingeri</i>]	see <i>Pseudobaicalasellus holsingeri</i>				
[<i>Caecidotea mausi</i>]	see <i>Pseudobaicalasellus mausi</i>				
<i>Caecidotea nordeni</i>	Norden's Groundwater Isopod	GH	SH	X	
[<i>Caecidotea pricei</i>]	see <i>Conasellus pricei</i>				
<i>Caecidotea sp. 1</i>	An Isopod	G1	S1		
[<i>Caecidotea vandeli</i>]	see <i>Pseudobaicalasellus vandeli</i>				
<i>Cambarus acuminatus</i>	Acuminate Crayfish	G4Q	S2	I	
<i>Conasellus pricei</i>	Price's Cave Isopod	G5	S3		
<i>Crangonyx dearolfi</i>	Pennsylvania Cave Crangonyctid	G2	S1	E	
<i>Crangonyx stagnicolous</i>	An Amphipod	G2	SNR		
<i>Dactylocythere scotos</i>	An Entocytherid Ostracod	GNR	S1		
<i>Diacyclops palustris</i>	A Cyclopoid Copepod	GNR	SU		
<i>Donnaldsoncythere donnaldsonensis</i>	Donaldson's Cave Ostracod	G3	SNR		
<i>Faxonius obscurus</i>	Allegheny Crayfish	G5	S3		
<i>Pseudobaicalasellus holsingeri</i>	Holsinger's Cave Isopod	G5	S1	E	
<i>Pseudobaicalasellus mausi</i>	Maus' Cave Isopod	G2	S1	E	
<i>Pseudobaicalasellus vandeli</i>	Vandel's Cave Isopod	G3G4	S1	E	
<i>Stygobromus allegheniensis</i>	Allegheny Cave Amphipod	G5	S2S3	I	
<i>Stygobromus amicus</i>	Friendly Cave Amphipod	G1	S1	E	
<i>Stygobromus biggersi</i>	Biggers' Cave Amphipod	G2G4	S1	E	
<i>Stygobromus caecilius</i>	Cecil Groundwater Amphipod	G1	S1	E	
<i>Stygobromus emarginatus</i>	Greenbrier Cave Amphipod	G3	S1	E	
<i>Stygobromus felleri</i>	Feller's Groundwater Amphipod	G1	S1	E	
<i>Stygobromus foliatus</i>	Rappahannock Spring Amphipod	G2	S1	E	
<i>Stygobromus franzi</i>	Franz's Cave Amphipod	G3G4	S2S3	I	
<i>Stygobromus gracilipes</i>	Shenandoah Valley Cave Amphipod	G3G4	S1	E	
<i>Stygobromus indentatus</i>	Tidewater Amphipod	G3	S1		
<i>Stygobromus kenki</i>	Rock Creek Groundwater Amphipod	G2	S1	E	
<i>Stygobromus paxillus</i>	Prettyboy Groundwater Amphipod	G1	S1	E	
<i>Stygobromus pizzinii</i>	Pizzini's Cave Amphipod	G3G4	S1		
<i>Stygobromus sextarius</i>	Capital Area Groundwater Amphipod	G1	S1	E	
<i>Stygobromus sp. 14</i>	Roundtop Amphipod	GNR	S1		
<i>Stygobromus sp. 5</i>	Barrelville Amphipod	GNR	S1		
<i>Stygobromus sp. 6</i>	Devil's Hole Cave Amphipod	GNR	S1		
<i>Stygobromus tenuis potomacus</i>	Potomac Amphipod	G4T4	S3		
<i>Stygobromus tenuis tenuis</i>	Slender Amphipod	G4T4	SU		
<u>SPIDERS</u>					
<i>Oreonetides sp. 1</i>	Snively's Cave Spider	GNR	SU		
<i>Porrhomma cavernicola</i>	Appalachian Cave Spider	G5	S2		
<u>INSECTS</u>					
Coleoptera					
<i>Apterodela unipunctata</i>	One-spotted Tiger Beetle	G4	S3		
<i>Cicindela abdominalis</i>	Eastern Pinebarrens Tiger Beetle	G3	S1	E	

List of Rare, Threatened, and Endangered Animals of Maryland

SCIENTIFIC NAME	COMMON NAME	GLOBAL RANK	STATE RANK	STATE STATUS	FEDERAL STATUS
<i>Cicindela ancocisconensis</i>	Appalachian Tiger Beetle	G3	S1	E	
<i>Cicindela formosa</i>	Big Sand Tiger Beetle	G5	SU		
<i>Cicindela limbalis</i>	Common Claybank Tiger Beetle	G5	SNR		
<i>Cicindela patruela</i>	Northern Barrens Tiger Beetle	G3	S1	E	
<i>Cicindela purpurea</i>	Cow Path Tiger Beetle	G5	S3		
<i>Cicindela scutellaris</i>	Festive Tiger Beetle	G5	S3		
<i>Cicindela splendida</i>	Splendid Tiger Beetle	G5	S1		
<i>Dryobius sexnotatus</i>	Six-banded Longhorn Beetle	GNR	S1	E	
<i>Ellipsoptera lepida</i>	Ghost Tiger Beetle	G3	S1	E	
<i>Ellipsoptera puritana</i>	Puritan Tiger Beetle	G1G2	S1S2	E	LT
<i>Habroscelimorpha dorsalis dorsalis</i>	Eastern Beach Tiger Beetle	G3T2	S1	E	LT
<i>Habroscelimorpha dorsalis media</i>	White Tiger Beetle	G3T3	S1	E	
<i>Helops cisteloides</i>	A Tenebrionid Beetle	GNR	S1	E	
<i>Hoperius planatus</i>	A Dytiscid Beetle	GNR	S2		
<i>Hydrochara occultus</i>	A Hydrophilid Beetle	GNR	SU		
<i>Hydrochus spangleri</i>	Seth Forest Water Scavenger Beetle	G1	S1	E	
<i>Hydrocolus deflatus</i>	A Predaceous Diving Beetle	GNR	S3		
<i>Laccophilus schwarzi</i>	Schwarz' Diving Beetle	GNR	SX		
<i>Lucanus elaphus</i>	Giant Stag Beetle	G3G5	SU		
<i>Nephus gordonii</i>	A Coccinellid Beetle	GNR	SU		
<i>Nicrophorus americanus</i>	American Burying Beetle	G3	SX	X	LE
<i>Photuris bethaniensis</i>	Bethany Beach Firefly	G1	S1		
<i>Photuris mysticalampas</i>	Mysterious Lantern Firefly	G1G2	S1		
<i>Pseudanophthalmus sp. 15</i>	Maryland Cave Beetle	G1	S1		
<i>Schoenicus puberulus</i>	A Tenebrionid Beetle	GNR	S1	E	
<i>Sperchopsis tessellatus</i>	A Hydrophilid Beetle	GNR	S2		
Collembola					
<i>Arrhopalites sp. 1</i>	Crabtree Cave Springtail	GNR	SU		
Diptera					
<i>Anasimyia distinctus</i>	Short-spurred Swamp Fly	G2G3	SNR		
<i>Microdon abstrusus</i>	Hidden Ant Fly	G1G3	S1S3		
<i>Wyeomyia smithii</i>	Pitcher-plant Mosquito	G5	S2		
Ephemeroptera					
<i>Anthopotamus verticis</i>	Walker's Tusked Sprawler	G4G5	SU		
<i>Siphloplecton costalense</i>	Speith's Great Speckled Olive Mayfly	G2G4	SNR		
Hemiptera					
<i>Chlorotettix sp. 1</i>	A Cicadellid Leafhopper	GNR	SU		
<i>Limotettix minuendus</i>	Eastern Sedge Barrens Leafhopper	G1	S1	E	
Hymenoptera					
<i>Andrena braccata</i>	A Mining Bee	GNR	SU		
<i>Andrena fulvipennis</i>	A Mining Bee	GNR	SU		

List of Rare, Threatened, and Endangered Animals of Maryland

SCIENTIFIC NAME	COMMON NAME	GLOBAL RANK	STATE RANK	STATE STATUS	FEDERAL STATUS
<i>Bombus affinis</i>	Rusty-patched Bumble Bee	G2	S1	E	LE
<i>Bombus auricomus</i>	Black-and-Gold Bumble Bee	G5	SU		
<i>Bombus bohemicus</i>	Gypsy Cuckoo Bumble Bee	G3G5	SH		
<i>Bombus citrinus</i>	Lemon Cuckoo Bumble Bee	G4	SU		
<i>Bombus fraternus</i>	Southern Plains Bumble Bee	G3G4	SH		
<i>Bombus pensylvanicus</i>	American Bumble Bee	G3G4	S2S3		
<i>Bombus sandersoni</i>	Sanderson's Bumble Bee	G5	S3		
<i>Bombus terricola</i>	Yellow-banded Bumble Bee	G3G4	S1		
<i>Bombus vagans</i>	Half-black Bumble Bee	G4	S3		
<i>Bombus variabilis</i>	Variable Cuckoo Bumble Bee	G1G2	SH		
<i>Colletes aestivalis</i>	A Cellophane Bee	GNR	SH		
<i>Dieunomia heteropoda</i>	Sunflower Sweat Bee	G5	S1S3		
<i>Dieunomia nevadensis</i>	A Dieunomia Bee	G5	SU		
<i>Epeoloides pilosula</i>	Macropis Cuckoo Bee	G3	SH		
<i>Lasioglossum arantium</i>	A Sweat Bee	GNR	S2S3		
<i>Lasioglossum georgeickworti</i>	George Eickwort's Sweat Bee	GNR	SU		
<i>Lasioglossum marinum</i>	Marine Metallic-Sweat Bee	GNR	SU		
<i>Lasioglossum nymphale</i>	A Sweat Bee	GNR	S2S3		
<i>Lasioglossum raleighense</i>	A Sweat Bee	GNR	SU		
<i>Macropis ciliata</i>	Fringed Loosestrife Oil-collecting Bee	GNR	S1		
<i>Macropis patellata</i>	Patellar Oil-collecting Bee	GNR	SH		
<i>Nomada rubicunda</i>	A Cuckoo Bee	GNR	S1S3		
<i>Nomada seneciophila</i>	A Cuckoo Bee	GNR	S1		
<i>Nomia maneei</i>	Pearly-banded Bee	G3?	S1S3		
<i>Osmia chalybea</i>	A Mason Bee	G4G5	S1S3		
<i>Protandrena abdominalis</i>	A Mining Bee	GNR	SU		
Lepidoptera - Butterflies					
<i>Amblyscirtes hegon</i>	Pepper and Salt Skipper	G5	S2	I	
<i>Anatrytone logan</i>	Delaware Skipper	G5	S3		
<i>Atlides halesus</i>	Great Purple Hairstreak	G5	S2S3		
<i>Boloria myrina</i>	Myrina Fritillary	G5?	S3		
<i>Calephelis borealis</i>	Northern Metalmark	G3	S2	T	
<i>Callophrys hesseli</i>	Hessel's Hairstreak	G3	SH	X	
<i>Callophrys irus</i>	Frosted Elfin	G3	S1	E	
<i>Callophrys polios</i>	Hoary Elfin	G5	S1	E	
<i>Celastrina neglectamajor</i>	Appalachian Blue	G3?	S3S4		
<i>Celastrina nigra</i>	Dusky Azure	GU	SH	X	
<i>Chlosyne harrisii</i>	Harris's Checkerspot	G4?	S2	T	
<i>Coenonympha californica</i>	Common Ringlet	G5	SU		
<i>Colias interior</i>	Pink-edged Sulphur	G5	SH		
<i>Erora laeta</i>	Early Hairstreak	G2G3	S1	E	
<i>Erynnis martialis</i>	Mottled Duskywing	G3	S1	E	
<i>Euchloe olympia</i>	Olympia Marble	G5	S2	I	
<i>Euphydryas phaeton</i>	Baltimore Checkerspot	G4	S2		

List of Rare, Threatened, and Endangered Animals of Maryland

SCIENTIFIC NAME	COMMON NAME	GLOBAL RANK	STATE RANK	STATE STATUS	FEDERAL STATUS
<i>Euphyes bimacula</i>	Two-spotted Skipper	G4	S1	E	
<i>Euphyes dion</i>	Dion Skipper	G5	S3		
<i>Glaucopsyche lygdamus</i>	Silvery Blue	G5	S2	I	
<i>Hermeuptychia sosybius</i>	Carolina Satyr	G5	S1S3		
<i>Hesperia leonardus</i>	Leonard's Skipper	G4	S2		
<i>Hesperia metea</i>	Cobweb Skipper	G4	S3		
<i>Hesperia sassacus</i>	Indian Skipper	G5	S3		
<i>Lycaena epixanthe</i>	Bog Copper	G4G5	S1	E	
<i>Nymphalis l-album</i>	Compton Tortoiseshell	G5	SU		
<i>Papilio cresphontes</i>	Giant Swallowtail	G5	S2	I	
<i>Phyciodes batesii</i>	Tawny Crescent	G3G4	SH	X	
<i>Phyciodes cocyta</i>	Northern Crescent	G5	SU		
<i>Pieris virginiensis</i>	West Virginia White	G4	S1S2		
<i>Poanes massasoit chermocki</i>	Chermock's Mulberry Wing	G4T1	S1	E	
<i>Polites mystic</i>	Long Dash	G5	S3		
<i>Polygonia progne</i>	Gray Comma	G5	S3		
<i>Problema bulenta</i>	Rare Skipper	G3	S1	T	
<i>Pterourus palamedes</i>	Palamedes Swallowtail	G5	S1	E	
<i>Pyrgus wyandot</i>	Appalachian Grizzled Skipper	G5T1T2	S1	E	
<i>Satyrium caryaevorus</i>	Hickory Hairstreak	G4	S1	E	
<i>Satyrium edwardsii</i>	Edwards' Hairstreak	G4	S1	E	
<i>Satyrium favonius ontario</i>	Northern Oak Hairstreak	G5T4	S1S2	E	
<i>Satyrium kingi</i>	King's Hairstreak	G3G4	S1	E	
<i>Speyeria atlantis</i>	Atlantis Fritillary	G5	S1	T	
<i>Speyeria idalia</i>	Regal Fritillary	G3?	SH	X	
<i>Telegonus cellus</i>	Golden-banded Skipper	G5	SH	X	
Lepidoptera - Moths					
<i>Agnorisma bollii</i>	A Noctuid Moth	G4?	SU		
<i>Apamea apamiformis</i>	Rice Worm Moth	G4	S2S3		
<i>Apamea plutonia</i>	Dusky Apamea Moth	G5	SU		
<i>Apodrepanulatrix liberaria</i>	New Jersey Tea Inchworm	G3	SU		
<i>Capis curvata</i>	Curved Halter Moth	G5	S1S2		
<i>Catocala marmorata</i>	Marbled Underwing	G3?	SH		
<i>Catocala pretiosa pretiosa</i>	Precious Underwing	G4T2	SH		
<i>Ectoedemia phleophaga</i>	Phleophagan Chestnut Nepticulid Moth	GH	SH		
<i>Elaphria georgei</i>	George's Midget Moth	G4	SU		
<i>Erastria coloraria</i>	Broad-lined Erastria	G3G4	SH		
<i>Euchlaena milnei</i>	Milne's Looper Moth	G2G4	SNR		
<i>Hadena ectypa</i>	The Starry Champion Moth	G3G4	SU		
<i>Hemaris gracilis</i>	Slender Clearwing	G4G5	SNR		
<i>Hemipachnobia subporphyrea</i>	Venus Flytrap Cutworm	G1	SU		
<i>Isoparce cupressi</i>	Cypress Sphinx Moth	G4	S1S2		
<i>Lithophane lemmeri</i>	Lemmer's Noctuid Moth	G3G4	SNR		

List of Rare, Threatened, and Endangered Animals of Maryland

SCIENTIFIC NAME	COMMON NAME	GLOBAL RANK	STATE RANK	STATE STATUS	FEDERAL STATUS
<i>Lytrosis sinuosa</i>	Sinuuous Lytrosis Moth	G4	S1S3		
<i>Melanapamea mixta</i>	Coastal Plain Apamea Moth	GU	S1		
<i>Meropleon ambifusca</i>	Newman's Brocade	G4G5	SU		
<i>Meropleon cosmion</i>	An Owlet Moth	G4	SNR		
<i>Meropleon titan</i>	An Owlet Moth	G2G4	S2S4		
<i>Papaipema araliae</i>	Aralia Shoot Borer Moth	G3G4	SNR		
<i>Papaipema duovata</i>	Seaside Goldenrod Stem Borer	G2G3	SU		
<i>Papaipema polymniae</i>	Polymnia Borer Moth	G4?	SH		
<i>Psectraglaea carnosae</i>	Pink Sallow	G3	SNR		
<i>Ptichodis bistrigata</i>	Southern Ptichodis	G3	SNR		
<i>Pyrrhia aurantiago</i>	Aureolaria Seed Borer	G3G4	SNR		
<i>Schizura apicalis</i>	Plain Schizura	G3G4	SNR		
<i>Sphinx franckii</i>	Franck's Sphinx	G4G5	S1S2		
<i>Zale lunifera</i>	Bold-based Zale Moth	G3G4	SNR		
<i>Zale submediana</i>	Gray Spring Zale	G4	S1S3		
<i>Zimmermannia bosquella</i>	American Chestnut Nepticulid Moth	GNR	SH		
Odonata					
<i>Aeshna canadensis</i>	Canada Darner	G5	S2		
<i>Aeshna constricta</i>	Lance-tipped Darner	G5	SH		
<i>Aeshna tuberculifera</i>	Black-tipped Darner	G5	S2		
<i>Aeshna verticalis</i>	Green-striped Darner	G5	S2		
<i>Amphiagrion saucium</i>	Eastern Red Damsel	G5	S3S4		
<i>Anax longipes</i>	Comet Darner	G5	S3		
<i>Archilestes grandis</i>	Great Spreadwing	G5	S3		
<i>Argia bipunctulata</i>	Seepage Dancer	G4	S3		
<i>Argia sedula</i>	Blue-ringed Dancer	G5	S3		
<i>Boyeria grafiana</i>	Ocellated Darner	G5	S1		
<i>Brachymesia gravida</i>	Four-spotted Pennant	G5	S3S4		
<i>Calopteryx amata</i>	Superb Jewelwing	G5	S1S2	T	
<i>Calopteryx angustipennis</i>	Appalachian Jewelwing	G4	S1S2		
<i>Calopteryx dimidiata</i>	Sparkling Jewelwing	G5	S2		
<i>Celithemis bertha</i>	Red-veined Pennant	G5	S1		
<i>Celithemis fasciata</i>	Banded Pennant	G5	S3		
<i>Celithemis martha</i>	Martha's Pennant	G4	S1		
<i>Celithemis ornata</i>	Faded Pennant	G5	SH		
<i>Celithemis verna</i>	Double-ringed Pennant	G5	S2		
<i>Chromagrion conditum</i>	Aurora Damsel	G5	S3S4		
[<i>Cordulegaster bilineata</i>]	see <i>Zoraena bilineata</i>				
[<i>Cordulegaster diastatops</i>]	see <i>Zoraena diastatops</i>				
[<i>Cordulegaster erronea</i>]	see <i>Zoraena erronea</i>				
[<i>Cordulegaster obliqua</i>]	see <i>Zoraena obliqua</i>				
[<i>Cordulegaster obliqua fasciata</i>]	see <i>Zoraena obliqua fasciata</i>				
<i>Cordulia shurtleffii</i>	American Emerald	G5	S3		
<i>Dorocordulia lepida</i>	Petite Emerald	G5	SH		

List of Rare, Threatened, and Endangered Animals of Maryland

SCIENTIFIC NAME	COMMON NAME	GLOBAL RANK	STATE RANK	STATE STATUS	FEDERAL STATUS
<i>Enallagma annexum</i>	Northern Bluet	G5	S1		
<i>Enallagma antennatum</i>	Rainbow Bluet	G5	S1		
<i>Enallagma carunculatum</i>	Tule Bluet	G5	S1		
<i>Enallagma daeckii</i>	Attenuated Bluet	G4	S3		
<i>Enallagma divagans</i>	Turquoise Bluet	G5	S3S4		
<i>Enallagma doubledayi</i>	Atlantic Bluet	G5	S1		
<i>Enallagma dubium</i>	Burgundy Bluet	G5	S1		
<i>Enallagma durum</i>	Big Bluet	G5	S3		
<i>Enallagma ebrium</i>	Marsh Bluet	G5	SH		
<i>Enallagma pallidum</i>	Pale Bluet	G4	S1		
<i>Enallagma traviatum</i>	Slender Bluet	G5	S3		
<i>Enallagma vesperum</i>	Vesper Bluet	G5	S3		
<i>Enallagma weewa</i>	Blackwater Bluet	G5	S2		
<i>Epitheca canis</i>	Beaverpond Baskettail	G5	S3		
<i>Epitheca costalis</i>	Slender Baskettail	G5	S1		
<i>Epitheca semiaquea</i>	Mantled Baskettail	G5	SH		
<i>Epitheca spinosa</i>	Robust Baskettail	G4	S1S2		
<i>Erpetogomphus designatus</i>	Eastern Ringtail	G5	S2		
<i>Erythrodiplax minuscula</i>	Little Blue Dragonlet	G5	S1		
<i>Gomphaeschna antilope</i>	Taper-tailed Darner	G4	S2		
<i>Gomphaeschna furcillata</i>	Harlequin Darner	G5	S3S4		
<i>Gomphurus fraternus</i>	Midland Clubtail	G5	S2		
<i>Gomphurus lineatifrons</i>	Splendid Clubtail	G4	S1		
<i>Gomphurus ventricosus</i>	Skillet Clubtail	G3	SH	X	
<i>Helocordulia selysii</i>	Selys' Sundragon	G4	S2	T	
<i>Helocordulia uhleri</i>	Uhler's Sundragon	G5	S3		
<i>Hetaerina titia</i>	Smoky Rubyspot	G5	SH		
<i>Hylogomphus abbreviatus</i>	Spine-crowned Clubtail	G4	S1		
<i>Hylogomphus adelphus</i>	Mustached Clubtail	G5	S1		
<i>Hylogomphus parvidens</i>	Piedmont Clubtail	G4	SH	X	
<i>Hylogomphus viridifrons</i>	Green-faced Clubtail	G3G4	S1		
<i>Ischnura kellicotti</i>	Lilypad Forktail	G5	S3S4		
<i>Ischnura prognata</i>	Furtive Forktail	G4	S1		
<i>Ladona exusta</i>	White Corporal	G5	S1	E	
<i>Ladona julia</i>	Chalk-fronted Skimmer	G5	S3		
<i>Lanthus parvulus</i>	Northern Pygmy Clubtail	G4G5	S2		
<i>Lanthus vernalis</i>	Southern Pygmy Clubtail	G4	S2		
<i>Lestes congener</i>	Spotted Spreadwing	G5	S3		
<i>Lestes dryas</i>	Emerald Spreadwing	G5	SH		
<i>Lestes eurinus</i>	Amber-winged Spreadwing	G5	S3		
<i>Lestes forcipatus</i>	Sweetflag Spreadwing	G5	S3		
<i>Lestes unguiculatus</i>	Lyre-tipped Spreadwing	G5	SH		
<i>Leucorrhinia frigida</i>	Frosted Whiteface	G5	S1		
<i>Leucorrhinia glacialis</i>	Crimson-ringed Whiteface	G5	S1		
<i>Leucorrhinia hudsonica</i>	Hudsonian Whiteface	G5	S1		

List of Rare, Threatened, and Endangered Animals of Maryland

SCIENTIFIC NAME	COMMON NAME	GLOBAL RANK	STATE RANK	STATE STATUS	FEDERAL STATUS
<i>Leucorrhinia intacta</i>	Dot-tailed Whiteface	G5	S3		
<i>Libellula auripennis</i>	Golden-winged Skimmer	G5	S3		
<i>Libellula axilena</i>	Bar-winged Skimmer	G5	S3		
<i>Libellula flavida</i>	Yellow-sided Skimmer	G5	S2S3		
<i>Macromia alleghaniensis</i>	Allegheny River Cruiser	G4	S2		
<i>Macromia illinoiensis georgina</i>	Georgia River Cruiser	G5T5	S3S4		
<i>Macromia taeniolata</i>	Royal River Cruiser	G5	S3		
<i>Nannothemis bella</i>	Elfin Skimmer	G4G5	S1	E	
<i>Nasiaeschna pentacantha</i>	Cyrano Darner	G5	S3S4		
<i>Nehalennia gracilis</i>	Sphagnum Sprite	G5	S2		
<i>Nehalennia integricollis</i>	Southern Sprite	G5	S1S2		
<i>Nehalennia irene</i>	Sedge Sprite	G5	S3		
<i>Neurocordulia obsoleta</i>	Umber Shadowdragon	G5	S3		
<i>Neurocordulia yamaskanensis</i>	Stygian Shadowdragon	G5	S3		
<i>Ophiogomphus howei</i>	Pygmy Snaketail	G3	S1		
<i>Ophiogomphus incurvatus incurvatus</i>	Appalachian Snaketail	G3T2T3	S1	E	
<i>Ophiogomphus mainensis fastigiatus</i>	Maine Snaketail	G4G5TU	S1		
<i>Ophiogomphus rupinsulensis</i>	Rusty Snaketail	G5	S2		
<i>Ophiogomphus sp. 1</i>	Chesapeake Snaketail	G1	S1		
<i>Phanogomphus descriptus</i>	Harpoon Clubtail	G4G5	S1S2		
<i>Phanogomphus quadricolor</i>	Rapids Clubtail	G3G4	S2	I	
<i>Progomphus obscurus</i>	Common Sanddragon	G5	S3		
<i>Rhionaeschna mutata</i>	Spatterdock Darner	G4	S1	E	
<i>Somatochlora elongata</i>	Ski-tailed Emerald	G5	S2		
<i>Somatochlora filosa</i>	Fine-lined Emerald	G5	S2		
<i>Somatochlora georgiana</i>	Coppery Emerald	G3G4	S1		
<i>Somatochlora linearis</i>	Mocha Emerald	G5	S3S4		
<i>Somatochlora provocans</i>	Treetop Emerald	G4	S1	E	
<i>Somatochlora walshii</i>	Brush-tipped Emerald	G5	S1		
<i>Stenogomphurus rogersi</i>	Sable Clubtail	G4	S2	I	
<i>Stylurus amnicola</i>	Riverine Clubtail	G4	SH	X	
<i>Stylurus laurae</i>	Laura's Clubtail	G4	S2S3		
<i>Stylurus plagiatus</i>	Russet-tipped Clubtail	G5	S3		
<i>Stylurus scudderi</i>	Zebra Clubtail	G5	S1		
<i>Stylurus spiniceps</i>	Arrow Clubtail	G5	S3		
<i>Sympetrum ambiguum</i>	Blue-faced Meadowhawk	G5	S3S4		
<i>Sympetrum obtrusum</i>	White-faced Meadowhawk	G5	S3		
<i>Sympetrum semicinctum</i>	Band-winged Meadowhawk	G5	S3		
<i>Tachopteryx thoreyi</i>	Gray Petaltail	G4	S3		
<i>Telebasis byersi</i>	Duckweed Firetail	G5	S1		
<i>Zoraena bilineata</i>	Brown Spiketail	G5	S3		
<i>Zoraena diastatops</i>	Delta-spotted Spiketail	G5	S3S4		
<i>Zoraena erronea</i>	Tiger Spiketail	G4	S3		
<i>Zoraena obliqua</i>	Arrowhead Spiketail	G4	S2		
<i>Zoraena obliqua fasciata</i>	Banded Spiketail	G4T3Q	S1		

List of Rare, Threatened, and Endangered Animals of Maryland

SCIENTIFIC NAME	COMMON NAME	GLOBAL RANK	STATE RANK	STATE STATUS	FEDERAL STATUS
Plecoptera					
<i>Alloperla aracoma</i>	Aracoma Sallfly	G3	SNR		
<i>Alloperla biserrata</i>	Dusky Sallfly	G3	SNR		
<i>Megaleuctra flinti</i>	Shenandoah Needlefly	G2G3	S1		
<i>Sweltsa palearata</i>	Shenandoah Sallfly	G2G3	S2		
<i>Sweltsa pocahontas</i>	Pocahontas Sallfly	G2G3	S2		
<i>Utaperla gaspesiana</i>	Gaspe Sallfly	G3	SNR		
Trichoptera					
<i>Ceraclea spongillovorax</i>	A Longhorned Caddisfly	G3G4	SNR		
<i>Ceraclea uvalo</i>	Spatulate Long-horned Caddisfly	G3	SNR		
<i>Cernotina pallida</i>	Pale Trumpet-net Caddisfly	G3G4	SNR		
<i>Cheumatopsyche parentum</i>	A Hydropschid Caddisfly	G3	SNR		
<i>Culoptila plummerensis</i>	A Saddlecase Caddisfly	G3G4	SNR		
<i>Hydropsyche brunneipennis</i>	A Net-spinning Caddisfly	G3G4	S3		
<i>Hydropsyche hoffmani</i>	A Net-spinning Caddisfly	G3G4	SNR		
<i>Protoptila georgiana</i>	A Caddisfly	G3G4	SNR		
FISHES					
<i>Acantharchus pomotis</i>	Mud Sunfish	G4G5	S3		
<i>Acipenser brevirostrum</i>	Shortnose Sturgeon	G3	S1	E	LE
<i>Acipenser oxyrinchus</i>	Atlantic Sturgeon	G3	S1	E	LE
<i>Alburnops chalybaeus</i>	Ironcolor Shiner	G4	S1	E	
<i>Catostomus catostomus</i>	Longnose Sucker	G5	SX	X	
<i>Centrarchus macropterus</i>	Flier	G5	S2S3	I	
<i>Clinostomus elongatus</i>	Redside Dace	G3G4	SX		
<i>Cottus sp. 7</i>	Checkered Sculpin	G4Q	S2		
<i>Enneacanthus chaetodon</i>	Blackbanded Sunfish	G3	S1	E	
<i>Enneacanthus obesus</i>	Banded Sunfish	G5	S3S4		
<i>Etheostoma fusiforme</i>	Swamp Darter	G5	S3		
<i>Etheostoma nigrum</i>	Johnny Darter	G5	S3		
<i>Etheostoma sellare</i>	Maryland Darter	GH	SH	E	LE
<i>Etheostoma vitreum</i>	Glassy Darter	G4G5	S2	T	
<i>Fundulus luciae</i>	Spotfin Killifish	G4	S3		
<i>Lepomis gulosus</i>	Warmouth	G5	S3S4		
<i>Lethenteron appendix</i>	American Brook Lamprey	G4	S2	T	
<i>Luxilus chrysocephalus</i>	Striped Shiner	G5	S1S2	I	
<i>Margariscus margarita</i>	Allegheny Pearl Dace	G5	S2S3	I	
<i>Notropis amoenus</i>	Comely Shiner	G5	S3		
<i>Notropis bifrenatus</i>	Bridle Shiner	G3	SH	X	
[<i>Notropis chalybaeus</i>]	see <i>Alburnops chalybaeus</i>				
<i>Noturus flavus</i>	Stonecat	G5	S1	E	
<i>Parahrinichthys bowersi</i>	Cheat Minnow	GNA	SX	X	
<i>Percina bimaculata</i>	Chesapeake Logperch	G1G2	S1S2	T	
<i>Percina notogramma</i>	Stripeback Darter	G4	S1	E	

List of Rare, Threatened, and Endangered Animals of Maryland

SCIENTIFIC NAME	COMMON NAME	GLOBAL RANK	STATE RANK	STATE STATUS	FEDERAL STATUS
<i>Percina peltata</i>	Shield Darter	G4	S3S4		
<i>Percopsis omiscomaycus</i>	Trout-perch	G5	SX	X	
<i>Salvelinus fontinalis</i>	Brook Trout	G5	S3S4		
<u>AMPHIBIANS</u>					
<i>Ambystoma jeffersonianum</i>	Jefferson Salamander	G3G4	S3		
<i>Ambystoma tigrinum</i>	Eastern Tiger Salamander	G5	S1	E	
<i>Aneides aeneus</i>	Green Salamander	G3G4	S1	E	
<i>Cryptobranchus alleganiensis</i>	Eastern Hellbender	G3	S1	E	
<i>Dryophytes gratiosus</i>	Barking Treefrog	G5	S1	E	
<i>Eurycea cirrigera</i>	Southern Two-lined Salamander	G5	SU		
<i>Gastrophryne carolinensis</i>	Eastern Narrow-mouthed Toad	G5	S2S3	E	
<i>Lithobates kauffeldi</i>	Atlantic Coast Leopard Frog	G3G4	SU		
<i>Lithobates virgatipes</i>	Carpenter Frog	G4	S3		
<i>Necturus maculosus</i>	Common Mudpuppy	G5	SX	X	
<i>Plethodon wehrlei</i>	Wehrle's Salamander	G4	S2	I	
<i>Pseudacris brachyphona</i>	Mountain Chorus Frog	G5	SH	E	
<i>Pseudacris feriarum</i>	Upland Chorus Frog	G5	S3S4		
<i>Pseudotriton montanus</i>	Mud Salamander	G5	S2?		
<u>REPTILES</u>					
<i>Apalone spinifera</i>	Eastern Spiny Softshell	G5	S1	I	
<i>Aspidozelis sexlineata</i>	Six-lined Racerunner	G5	S3		
<i>Caretta caretta</i>	Loggerhead Sea Turtle	G2G4	S1B,S1S2N	T	LT
<i>Cemophora coccinea</i>	Scarletsnake	G5	S1		
<i>Chelonia mydas</i>	Green Sea Turtle	G3	S1N	T	LT
<i>Clemmys guttata</i>	Spotted Turtle	G5	S3S4		
<i>Crotalus horridus</i>	Timber Rattlesnake	G4	S3		
<i>Dermochelys coriacea</i>	Leatherback Sea Turtle	G2	S1N	E	LE
<i>Eretmochelys imbricata</i>	Atlantic Hawksbill Sea Turtle	G3	SNA	E	LE
<i>Farancia erythrogramma</i>	Rainbow Snake	G4	S1	E	
<i>Glyptemys insculpta</i>	Wood Turtle	G2G3	S2S3		
<i>Glyptemys muhlenbergii</i>	Bog Turtle	G2G3	S2	T	LT
<i>Graptemys geographica</i>	Northern Map Turtle	G4G5	S1	E*	
<i>Kinosternon baurii</i>	Striped Mud Turtle	G4G5	SU		
<i>Lampropeltis rhombomaculata</i>	Northern Mole Kingsnake	G4	S1		
<i>Lepidochelys kempii</i>	Kemp's Ridley Sea Turtle	G1	S1N	E	LE
<i>Nerodia erythrogaster</i>	Plain-bellied Watersnake	G5	S2S3		
<i>Opheodrys vernalis</i>	Smooth Greensnake	G5	S3S4		
<i>Pantherophis guttatus</i>	Red Cornsnake	G5	S2		
<i>Pituophis melanoleucus</i>	Northern Pinesnake	G4	SH		
<i>Plestiodon anthracinus</i>	Northern Coal Skink	G5	S1	E	
<i>Pseudemys concinna</i>	River Cooter	G5	S3		
<i>Virginia valeriae pulchra</i>	Mountain Earthsnake	G5T3T4	S1S2	E	
<u>BIRDS</u>					
<i>Accipiter atricapillus</i>	American Goshawk	G5	SHB	E*	

List of Rare, Threatened, and Endangered Animals of Maryland

SCIENTIFIC NAME	COMMON NAME	GLOBAL RANK	STATE RANK	STATE STATUS	FEDERAL STATUS
<i>Accipiter striatus</i>	Sharp-shinned Hawk	G5	S2B		
<i>Actitis macularius</i>	Spotted Sandpiper	G5	S3S4B		
<i>Aegolius acadicus</i>	Northern Saw-whet Owl	G5	S1B		
<i>Ammodramus maritimus</i>	Seaside Sparrow	G4	S3S4B		
<i>Ammospiza caudacuta</i>	Saltmarsh Sparrow	G2	S2B,S1N	I	
<i>Anarhynchus wilsonia</i>	Wilson's Plover	G5	SHB	E	
<i>Anas rubripes</i>	American Black Duck	G5	S3S4B		
<i>Antrostomus carolinensis</i>	Chuck-will's-widow	G5	S3S4B		
<i>Antrostomus vociferus</i>	Eastern Whip-poor-will	G5	S3S4B		
<i>Ardea alba</i>	Great Egret	G5	S3B		
<i>Asio flammeus</i>	Short-eared Owl	G5	S1B	E	
<i>Asio otus</i>	Long-eared Owl	G5	S1B		
<i>Bartramia longicauda</i>	Upland Sandpiper	G5	S1B	E	
<i>Botaurus exilis</i>	Least Bittern	G4	S2S3B	I	
<i>Botaurus lentiginosus</i>	American Bittern	G5	S1B	T	
<i>Buteo platypterus</i>	Broad-winged Hawk	G5	S3B		
<i>Calidris canutus rufa</i>	Red Knot	G4T2	S1M	T	LT
<i>Campephilus principalis</i>	Ivory-billed Woodpecker	GX	SX	X	LE
<i>Cardellina canadensis</i>	Canada Warbler	G5	S2B		
<i>Catharus fuscescens</i>	Veery	G5	S3S4B		
<i>Catharus ustulatus</i>	Swainson's Thrush	G5	SHB	X	
<i>Centronyx henslowii</i>	Henslow's Sparrow	G4	S1S2B	I	
<i>Certhia americana</i>	Brown Creeper	G5	S3B		
<i>Charadrius melodus</i>	Piping Plover	G3	S1B	E	LT
[<i>Charadrius wilsonia</i>]	see <i>Anarhynchus wilsonia</i>				
<i>Chondestes grammacus</i>	Lark Sparrow	G5	SXB	X	
<i>Chordeiles minor</i>	Common Nighthawk	G5	S1B		
<i>Circus hudsonius</i>	Northern Harrier	G5	S2B	I	
<i>Cistothorus palustris</i>	Marsh Wren	G5	S3S4B		
<i>Cistothorus stellaris</i>	Sedge Wren	G5	S1B	E	
<i>Coccyzus erythrophthalmus</i>	Black-billed Cuckoo	G5	S3B		
<i>Colinus virginianus</i>	Northern Bobwhite	G4G5	S3S4		
<i>Contopus cooperi</i>	Olive-sided Flycatcher	G4	SHB	X	
<i>Corvus corax</i>	Common Raven	G5	S3S4		
<i>Dolichonyx oryzivorus</i>	Bobolink	G5	S3B		
<i>Dryobates borealis</i>	Red-cockaded Woodpecker	G3	SHB	X	LE
<i>Egretta caerulea</i>	Little Blue Heron	G5	S1B		
<i>Egretta thula</i>	Snowy Egret	G5	S2B		
<i>Egretta tricolor</i>	Tricolored Heron	G5	S1B		
<i>Empidonax alnorum</i>	Alder Flycatcher	G5	S2B	I	
<i>Empidonax minimus</i>	Least Flycatcher	G5	S3B		
<i>Empidonax traillii</i>	Willow Flycatcher	G5	S3S4B		
<i>Falco peregrinus anatum</i>	North American Peregrine Falcon	G4T4	S2S3	I	
<i>Falco sparverius</i>	American Kestrel	G5	S3S4B		
<i>Fulica americana</i>	American Coot	G5	S1B		

List of Rare, Threatened, and Endangered Animals of Maryland

SCIENTIFIC NAME	COMMON NAME	GLOBAL RANK	STATE RANK	STATE STATUS	FEDERAL STATUS
<i>Gallinula galeata</i>	Common Gallinule	G5	S2S3B	I	
<i>Gelochelidon nilotica</i>	Gull-billed Tern	G5	SHB	E	
<i>Geothlypis formosa</i>	Kentucky Warbler	G5	S3S4B		
<i>Geothlypis philadelphia</i>	Mourning Warbler	G5	S1B	E	
<i>Haematopus palliatus</i>	American Oystercatcher	G5	S3B		
<i>Haemorhous purpureus</i>	Purple Finch	G5	S3B		
<i>Haliaeetus leucocephalus</i>	Bald Eagle	G5	S3S4		
<i>Himantopus mexicanus</i>	Black-necked Stilt	G5	S2B		
[<i>Ixobrychus exilis</i>]	see <i>Botaurus exilis</i>				
<i>Junco hyemalis</i>	Dark-eyed Junco	G5	S3B		
<i>Lanius ludovicianus</i>	Loggerhead Shrike	G4	SHB	E	
<i>Laterallus jamaicensis</i>	Black Rail	G3	S1	E	LT
<i>Leiothlypis ruficapilla</i>	Nashville Warbler	G5	S1B	T	
<i>Leucophaeus atricilla</i>	Laughing Gull	G5	S1B		
<i>Limnothlypis swainsonii</i>	Swainson's Warbler	G4	S1B	E	
<i>Lophodytes cucullatus</i>	Hooded Merganser	G5	S3B		
<i>Mareca strepera</i>	Gadwall	G5	S1S2B		
<i>Melospiza georgiana</i>	Swamp Sparrow	G5	S3B		
<i>Melospiza georgiana nigrescens</i>	Coastal Plain Swamp Sparrow	G5T3	S2S3B	I	
<i>Mergus merganser</i>	Common Merganser	G5	S3B		
<i>Numenius borealis</i>	Eskimo Curlew	GH	SXM	X	LE
<i>Nyctanassa violacea</i>	Yellow-crowned Night-Heron	G5	S3B		
<i>Nycticorax nycticorax</i>	Black-crowned Night-Heron	G5	S2S3B		
<i>Parkesia noveboracensis</i>	Northern Waterthrush	G5	S2B	I	
<i>Passerculus sandwichensis</i>	Savannah Sparrow	G5	S3B		
<i>Pelecanus occidentalis</i>	Brown Pelican	G4	S1B		
<i>Peucaea aestivalis</i>	Bachman's Sparrow	G3	SHB	X	
<i>Plegadis falcinellus</i>	Glossy Ibis	G5	S1B		
<i>Podilymbus podiceps</i>	Pied-billed Grebe	G5	S2S3B		
<i>Poocetes gramineus</i>	Vesper Sparrow	G5	S3B		
<i>Porzana carolina</i>	Sora	G5	S1B,S3M		
<i>Quiscalus major</i>	Boat-tailed Grackle	G5	S3		
<i>Rallus elegans</i>	King Rail	G4	S2B		
<i>Regulus satrapa</i>	Golden-crowned Kinglet	G5	S3B		
<i>Riparia riparia</i>	Bank Swallow	G5	S3B		
<i>Rynchops niger</i>	Black Skimmer	G5	S1B	E	
<i>Setophaga caerulescens</i>	Black-throated Blue Warbler	G5	S3S4B		
<i>Setophaga cerulea</i>	Cerulean Warbler	G4	S3B		
<i>Setophaga citrina</i>	Hooded Warbler	G5	S3S4B		
<i>Setophaga coronata</i>	Yellow-rumped Warbler	G5	S2S3B		
<i>Setophaga fusca</i>	Blackburnian Warbler	G5	S3B		
<i>Setophaga magnolia</i>	Magnolia Warbler	G5	S3S4B		
<i>Setophaga ruticilla</i>	American Redstart	G5	S3S4B		
<i>Setophaga virens waynei</i>	Wayne's Black-throated Green Warbler	G5T1	SUB		

List of Rare, Threatened, and Endangered Animals of Maryland

SCIENTIFIC NAME	COMMON NAME	GLOBAL RANK	STATE RANK	STATE STATUS	FEDERAL STATUS
<i>Sitta canadensis</i>	Red-breasted Nuthatch	G5	S3B		
<i>Spatula discors</i>	Blue-winged Teal	G5	S1B		
<i>Sphyrapicus varius</i>	Yellow-bellied Sapsucker	G5	S3B		
<i>Spinus pinus</i>	Pine Siskin	G5	S2B		
<i>Spiza americana</i>	Dickcissel	G5	S3B		
<i>Sterna dougallii</i>	Roseate Tern	G4	SXB	X	LE
<i>Sterna forsteri</i>	Forster's Tern	G5	S2B	I	
<i>Sterna hirundo</i>	Common Tern	G5	S1B	E	
<i>Sternula antillarum</i>	Least Tern	G4	S2B	T	
<i>Thalasseus maximus</i>	Royal Tern	G5	S1B	E	
<i>Thalasseus sandvicensis</i>	Sandwich Tern	G5	S1B		
<i>Thryomanes bewickii bewickii</i>	Bewick's Wren	G5T1T3	SXB	X	
<i>Tringa semipalmata</i>	Willet	G5	S3B		
<i>Troglodytes hiemalis</i>	Winter Wren	G5	S2B		
<i>Tympanuchus cupido</i>	Greater Prairie Chicken	G4	SX	X	
[<i>Tyto alba</i>]	see <i>Tyto furcata</i>				
<i>Tyto furcata</i>	American Barn Owl	G5	S2B	I	
<i>Vermivora chrysoptera</i>	Golden-winged Warbler	G4	S1B	I	
<i>Vermivora pinus</i>	Blue-winged Warbler	G5	S3B		
<u>MAMMALS</u>					
<i>Balaenoptera borealis</i>	Sei Whale	G5?	S1	E	LE
<i>Balaenoptera musculus</i>	Blue Whale	G3G4	S1	E	LE
<i>Balaenoptera physalus</i>	Fin Whale	G3G4	S1S2	E	LE
<i>Bos bison</i>	American Bison	G4	SX		
<i>Canis lupus</i>	Gray Wolf	G5	SX	X	LE
<i>Cervus canadensis</i>	Elk	G4	SX	X	
[<i>Cervus elaphus</i>]	see <i>Cervus canadensis</i>				
<i>Condylura cristata parva</i>	Southeastern Star-nosed Mole	G5T4	SU		
<i>Corynorhinus townsendii virginianus</i>	Virginia Big-eared Bat	G4T3	SNR		
<i>Erethizon dorsatum</i>	North American Porcupine	G5	S3S4		
<i>Eubalaena glacialis</i>	North Atlantic Right Whale	G1	S1	E	LE
<i>Lasionycteris noctivagans</i>	Silver-haired Bat	G4	SU		
<i>Lasiurus borealis</i>	Eastern Red Bat	G3G4	S3S4		
<i>Lasiurus cinereus</i>	Hoary Bat	G3G4	S3S4		
<i>Lepus americanus</i>	Snowshoe Hare	G5	SH	X	
<i>Lynx rufus</i>	Bobcat	G5	S3	I	
<i>Martes americana</i>	American Marten	G5	SX	X	
<i>Megaptera novaeangliae</i>	Humpback Whale	G4	S1S2	E	
<i>Microtus chrotorrhinus carolinensis</i>	Southern Rock Vole	G5T3	S1	E	
<i>Mustela nivalis</i>	Least Weasel	G5	S2S3	I	
<i>Myotis leibii</i>	Eastern Small-footed Myotis	G4	S1	E	
<i>Myotis lucifugus</i>	Little Brown Bat	G3G4	S1		
<i>Myotis septentrionalis</i>	Northern Long-eared Bat	G2G3	S1	E	LE
<i>Myotis sodalis</i>	Indiana Bat	G2	S1	E	LE

List of Rare, Threatened, and Endangered Animals of Maryland

SCIENTIFIC NAME	COMMON NAME	GLOBAL RANK	STATE RANK	STATE STATUS	FEDERAL STATUS
<i>Neotoma magister</i>	Allegheny Woodrat	G3	S1	E	
<i>Perimyotis subflavus</i>	Tricolored Bat	G3G4	S1		
<i>Physeter catodon</i>	Sperm Whale	G3G4	S1	E	LE
<i>Puma concolor cougar</i>	Eastern Cougar	G5TXQ	SH	X	LE
<i>Reithrodontomys humulis</i>	Eastern Harvest Mouse	G5	SH	X	
<i>Sciurus niger cinereus</i>	Delmarva Fox Squirrel	G5T3	S1	I	
<i>Sorex dispar</i>	Long-tailed Shrew	G4	S2	I	
<i>Sorex fumeus</i>	Smoky Shrew	G5	S2S3	I	
<i>Sorex hoyi winnemana</i>	Southern Pygmy Shrew	G5T4	S2		
<i>Sorex longirostris</i>	Southeastern Shrew	G5	S3S4		
<i>Sorex albibarbis</i>	Eastern Water Shrew	G5	S1	E	
<i>Spilogale putorius</i>	Eastern Spotted Skunk	G4	S1		
<i>Sylvilagus obscurus</i>	Appalachian Cottontail	G4	S1	I	
<i>Synaptomys cooperi</i>	Southern Bog Lemming	G5	S3		
<i>Ursus americanus</i>	American Black Bear	G5	S3S4		

APPENDIX I

CHANGES TO STATE RANKS AND STATUSES SINCE THE LAST PUBLISHED LIST (November 2023)

SCIENTIFIC NAME	COMMON NAME	CURRENT RANK	FORMER RANK	STATE STATUS	FORMER STATUS
<u>AMPHIBIANS</u>					
<i>Pseudacris feriarum</i>	Upland Chorus Frog	S3S4	S4		
<u>REPTILES</u>					
<i>Opheodrys vernalis</i>	Smooth Greensnake	S3S4	S4		
<u>BIRDS</u>					
<i>Accipiter atricapillus</i>	American Goshawk	SHB	S1B	E*	E*
<i>Accipiter striatus</i>	Sharp-shinned Hawk	S2B	S2S3B		
<i>Ammodramus maritimus</i>	Seaside Sparrow	S3S4B	S4B,S2N		
<i>Anarhynchus wilsonia</i>	Wilson's Plover	SHB	S1B	E	E
<i>Anas rubripes</i>	American Black Duck	S3S4B	S4B,S5N		
<i>Antrostomus carolinensis</i>	Chuck-will's-widow	S3S4B	S4B		
<i>Ardea alba</i>	Great Egret	S3B	S3S4B		
<i>Buteo platypterus</i>	Broad-winged Hawk	S3B	S4B		
<i>Cardellina canadensis</i>	Canada Warbler	S2B	S3B		
<i>Catharus fuscescens</i>	Veery	S3S4B	S4B		
<i>Centronyx henslowii</i>	Henslow's Sparrow	S1S2B	S2B	I	I
<i>Chordeiles minor</i>	Common Nighthawk	S1B	S2S3B		
<i>Cistothorus palustris</i>	Marsh Wren	S3S4B	S4B,S2N		
<i>Coccyzus erythrophthalmus</i>	Black-billed Cuckoo	S3B	S4B		
<i>Colinus virginianus</i>	Northern Bobwhite	S3S4	S5		
<i>Dolichonyx oryzivorus</i>	Bobolink	S3B	S3S4B		
<i>Egretta caerulea</i>	Little Blue Heron	S1B	S3B		
<i>Egretta thula</i>	Snowy Egret	S2B	S3B		
<i>Egretta tricolor</i>	Tricolored Heron	S1B	S3B		
<i>Empidonax minimus</i>	Least Flycatcher	S3B	S3S4B		
<i>Empidonax traillii</i>	Willow Flycatcher	S3S4B	S4B		
<i>Falco peregrinus anatum</i>	American Peregrine Falcon	S2S3	S2B	I	I
<i>Falco sparverius</i>	American Kestrel	S3S4B	S5B,S4N		
<i>Gelochelidon nilotica</i>	Gull-billed Tern	SHB	S1B	E	E
<i>Geothlypis formosa</i>	Kentucky Warbler	S3S4B	S4B		
<i>Himantopus mexicanus</i>	Black-necked Stilt	S2B	S1B		
<i>Lanius ludovicianus</i>	Loggerhead Shrike	SHB	S1B	E	E
<i>Mareca strepera</i>	Gadwall	S1S2B	S2B		
<i>Melospiza georgiana</i>	Swamp Sparrow	S3B	S4BS5N		
<i>Mergus merganser</i>	Common Merganser	S3B	S2B		
<i>Nycticorax nycticorax</i>	Black-crowned Night-Heron	S2S3B	S3B,S2N		
<i>Passerculus sandwichensis</i>	Savannah Sparrow	S3B	S4		
<i>Plegadis falcinellus</i>	Glossy Ibis	S1B	S3B		
<i>Poocetes gramineus</i>	Vesper Sparrow	S3B	S4B		
<i>Porzana carolina</i>	Sora	S1B,S3M	S2B		
<i>Quiscalus major</i>	Boat-tailed Grackle	S3	S3S4		

APPENDIX I

CHANGES TO STATE RANKS AND STATUSES SINCE THE LAST PUBLISHED LIST (November 2023)

SCIENTIFIC NAME	COMMON NAME	CURRENT RANK	FORMER RANK	STATE STATUS	FORMER STATUS
<i>Setophaga citrina</i>	Hooded Warbler	S3S4B	S4S5B		
<i>Setophaga coronata</i>	Yellow-rumped Warbler	S2S3B	S2B		
<i>Setophaga ruticilla</i>	American Redstart	S3S4B	S4B		
<i>Sphyrapicus varius</i>	Yellow-bellied Sapsucker	S3B	S1B		
<i>Tringa semipalmata</i>	Willet	S3B	S3S4B		
<i>Vermivora chrysoptera</i>	Golden-winged Warbler	S1B	S2B	I	I
<i>Vermivora pinus</i>	Blue-winged Warbler	S3B	S4B		

APPENDIX II

ANIMAL SPECIES REPORTED, FALSELY REPORTED, OR POTENTIALLY OCCURRING IN MARYLAND

The following species do not occur in Maryland based on currently available information. Although not exhaustive, the list is included to provide clarification for those species whose rank in Maryland may be unclear due to conflicting reports or vague published accounts. For those species with a rank of SR, only unverified reports exist. Species with a rank of SRF have been falsely reported, and the report may persist in the literature. The list also brings attention to those species that potentially occur in Maryland (SP) and, if documented, their presence could have significant conservation value. All of these ranks are included within and sometimes reported as the generic rank of SNA, since they are not current conservation targets.

SCIENTIFIC NAME	COMMON NAME	STATE RANK
<u>MOLLUSKS</u>		
<i>Alasmidonta marginata</i>	Elktoe	SRF
<i>Amnicola limosus</i>	Mud Amnicola	SP
<i>Campeloma decisum</i>	Pointed Campeloma	SP
<i>Elimia virginica</i>	Piedmont Elimia	SP
<i>Ferrissia fragilis</i>	Fragile Ancyloid	SP
<i>Fontigens nickliniana</i>	Watercress Snail	SP
<i>Gillia altilis</i>	Buffalo Pebblesnail	SP
<i>Gyraulus deflectus</i>	Flexed Gyro	SP
<i>Leptoxis carinata</i>	Crested Mudalia	SP
<i>Lioplax subcarinata</i>	Ridged Lioplax	SP
<i>Lyogyrus granum</i>	Squat Dusksnail	SP
<i>Micromenetus dilatatus</i>	Bugle Sprite	SP
<i>Physella heterostropha</i>	Pewter Physa	SP
<i>Planorbella trivolvis</i>	Marsh Rams-horn	SP
<i>Planorbula armigera</i>	Thicklip Rams-horn	SP
<i>Pseudosuccinea columella</i>	Mimic Lymnaea	SP
<i>Valvata tricarinata</i>	Threeridge Valvata	SP
<u>INSECTS</u>		
Coleoptera		
<i>Cicindela marginipennis</i>	Cobblestone Tiger Beetle	SP
<i>Lordithon niger</i>	Black Lordithon Rove Beetle	SP
Lepidoptera – Butterflies		
<i>Calephelis virginensis</i>	Little Metalmark	SR
<i>Cyllopsis gemma</i>	Gemmed Satyr	SR
<i>Neonympha mitchellii</i>	Mitchell's Satyr	SR
Lepidoptera – Moths		
<i>Synanthedon castaneae</i>	Chestnut Clearwing Moth	SRF
Odonata		
<i>Aeshna eremita</i>	Lake Darner	SR
<i>Arigomphus furcifer</i>	Lilypad Clubtail	SP
<i>Calopteryx aequabilis</i>	River Jewelwing	SR
<i>Enallagma sulcatum</i>	Golden Bluet	SRF
<i>Epitheca spinigera</i>	Spiny Baskettail	SP
<i>Gomphus borealis</i>	Beaverpond Clubtail	SP
<i>Gomphus spicatus</i>	Dusky Clubtail	SR

APPENDIX II

ANIMAL SPECIES REPORTED, FALSELY REPORTED, OR POTENTIALLY OCCURRING IN MARYLAND

The following species do not occur in Maryland based on currently available information. Although not exhaustive, the list is included to provide clarification for those species whose rank in Maryland may be unclear due to conflicting reports or vague published accounts. For those species with a rank of SR, only unverified reports exist. Species with a rank of SRF have been falsely reported, and the report may persist in the literature. The list also brings attention to those species that potentially occur in Maryland (SP) and, if documented, their presence could have significant conservation value. All of these ranks are included within and sometimes reported as the generic rank of SNA, since they are not current conservation targets.

SCIENTIFIC NAME	COMMON NAME	STATE RANK
<i>Neurocordulia virginiensis</i>	Cinnamon Shadowdragon	SRF
<i>Ophiogomphus alleghaniensis</i>	Allegheny Snaketail	SR
<i>Ophiogomphus carolus</i>	Riffle Snaketail	SP
<i>Somatochlora forcipata</i>	Forcipate Emerald	SP
<i>Stylurus notatus</i>	Elusive Clubtail	SR
<i>Sympetrum internum</i>	Cherry-faced Meadowhawk	SR
<u>FISHES</u>		
<i>Cottus cognatus</i>	Slimy Sculpin	SRF
<i>Percina caprodes</i>	Logperch	SRF
<u>AMPHIBIANS</u>		
<i>Hyla femoralis</i>	Pine Woods Treefrog	SP
<i>Siren lacertina</i>	Greater Siren	SRF
<u>MAMMALS</u>		
<i>Corynorhinus rafinesquii</i>	Rafinesque's Big-eared Bat	SP
<i>Glaucomys sabrinus</i>	Northern Flying Squirrel	SP
<i>Glaucomys sabrinus fuscus</i>	Virginia Northern Flying Squirrel	SP
<i>Lasiurus seminolus</i>	Seminole Bat	SR
<i>Mustela richardsonii</i>	Ermine	SR
<i>Myotis austroriparius</i>	Southeastern Myotis	SR
<i>Pseudorca crassidens</i>	False Killer Whale	SR