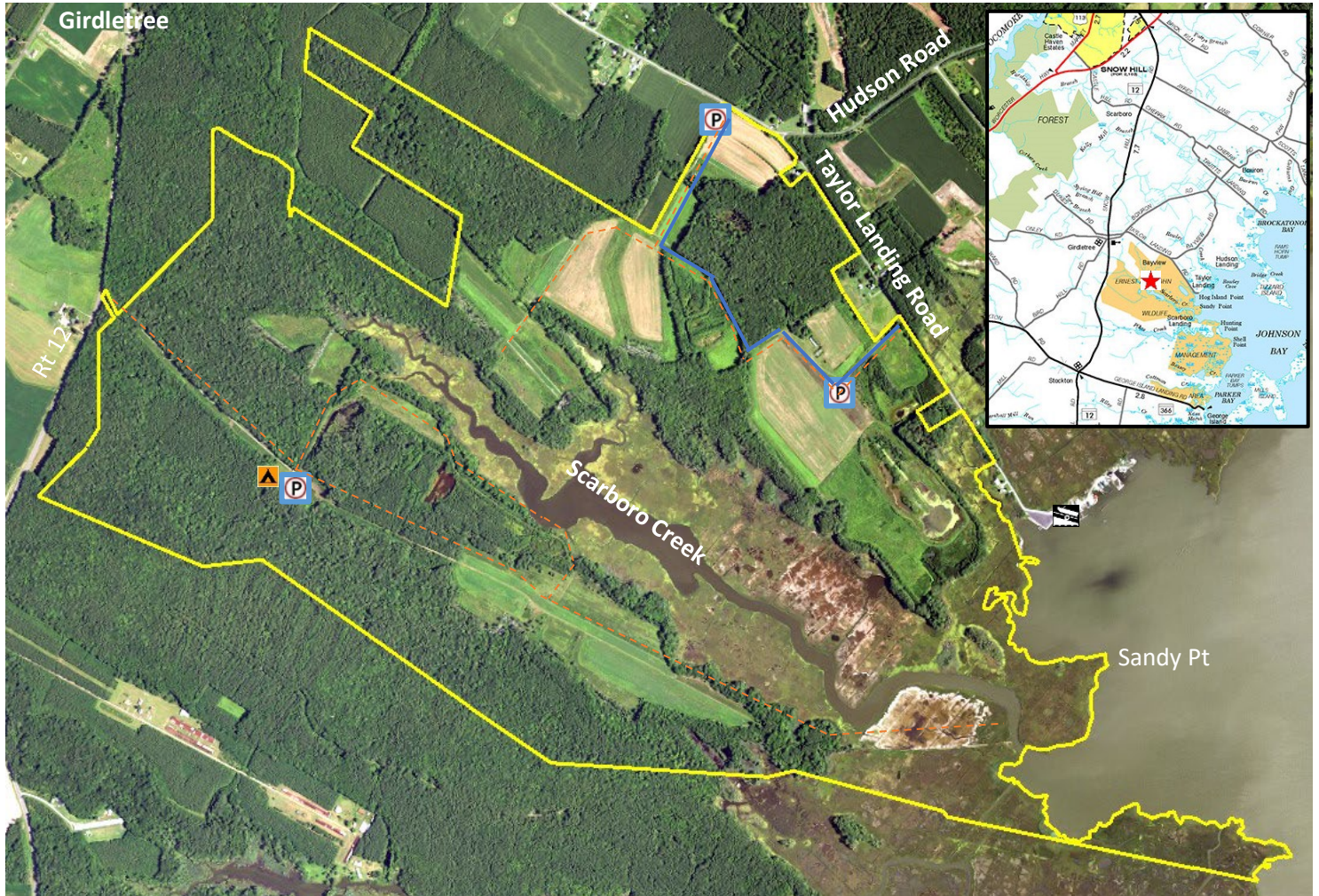








# E.A. Vaughn WMA (North)

Wes Moore Governor  
Josh Kurtz Secretary



## Legend

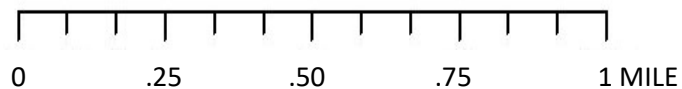
-  WMA Boundary (2,630 acres)
-  Trails
-  Disability Pass Access Road
-  Parking
-  Primitive Camping
-  Boat Ramp



**Wildlife and Heritage Service**

Wellington WMA  
32733 Dublin Road  
Princess Anne, Md. 21853  
(410) 651-2065

[dnr.maryland.gov](http://dnr.maryland.gov)



**October 2022**