

# Distinguishing Features - Salamanders of Maryland

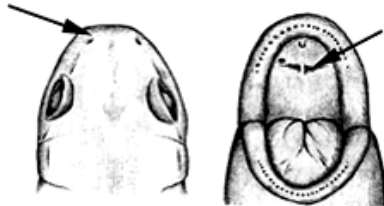
## Order Caudata



External gills



No external gills



No nasolabial grooves; Wide tooth patch



Nasolabial grooves; Long tooth patch



Pale diagonal lines from eye to angle of jaw - Rear legs conspicuously larger than front legs



Tail rounded or oval



Keel present on posterior half of tail



Canthus rostralis present



Canthus rostralis absent



Didgits square-tipped and expanded



Gills without rachises



Gills with rachises