

2018 BIOLOGICAL MONITORING PROGRAM

**Baltimore County Department
of Environmental Protection
and Sustainability**

By Sarah Witcher



**Baltimore County Executive Kevin Kamenetz
and the County Council**



CLEAN GREEN COUNTY



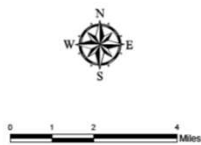
- ▶ Sentinel
 - ▶ 19 total points
 - ▶ Half sampled every other year since 2003
 - ▶ Bugs and fish
- ▶ Reference
 - ▶ 8 points
 - ▶ Sampled every year since 2003
 - ▶ Bugs every year, fish every three
- ▶ Restoration
 - ▶ Multiple projects and point locations upstream/downstream
 - ▶ Sampling frequency and type varies by project and permit status
- ▶ Random/Probabilistic
 - ▶ 50 points sampled annually, usually by a consultant (Versar)
 - ▶ Watersheds rotate every other year
 - ▶ Additional points for sediment TMDL, 5-year rotation (42 in 2018)
 - ▶ Bugs, may do a small representative sampling of fish

2018 PROGRAMS

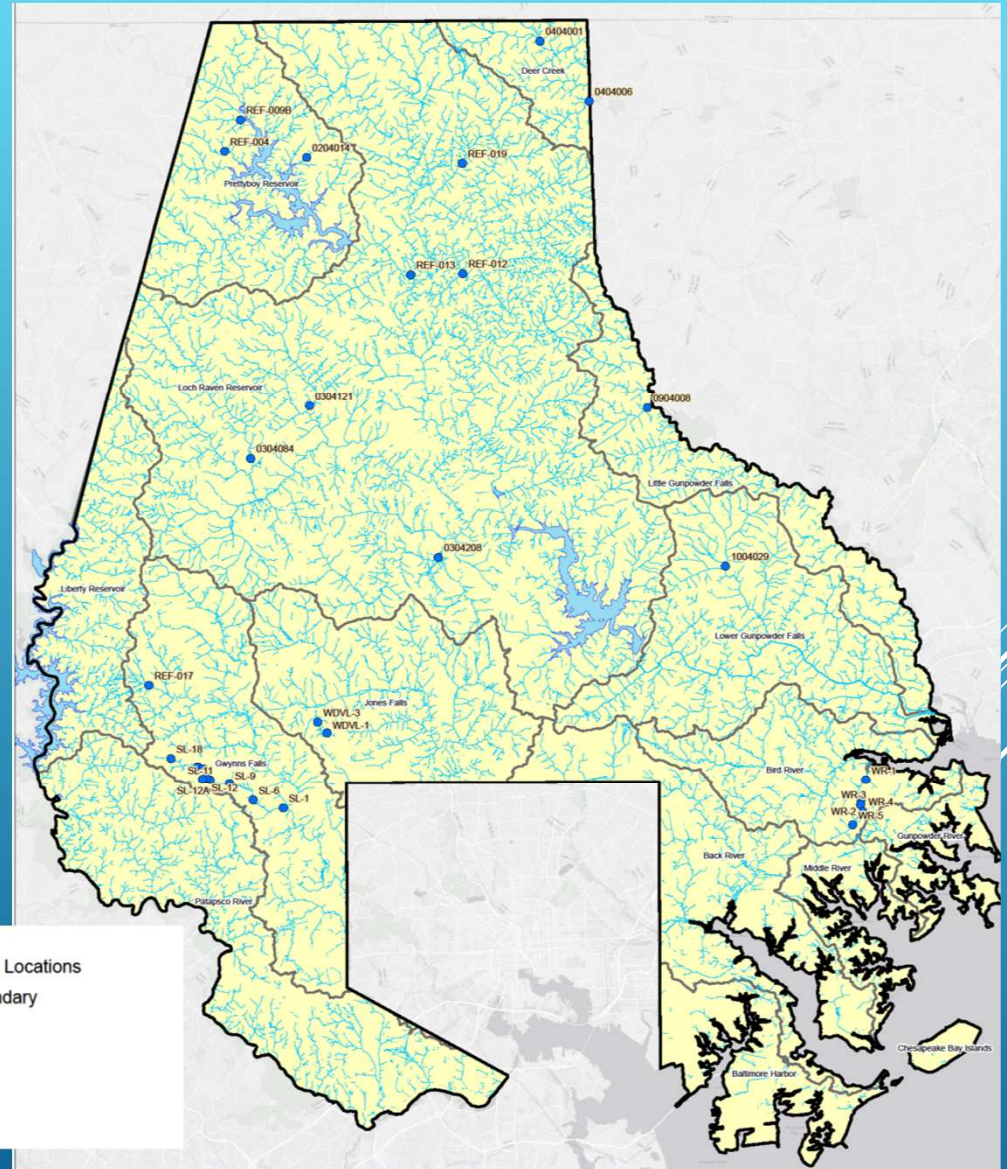




IN-HOUSE PROGRAMS

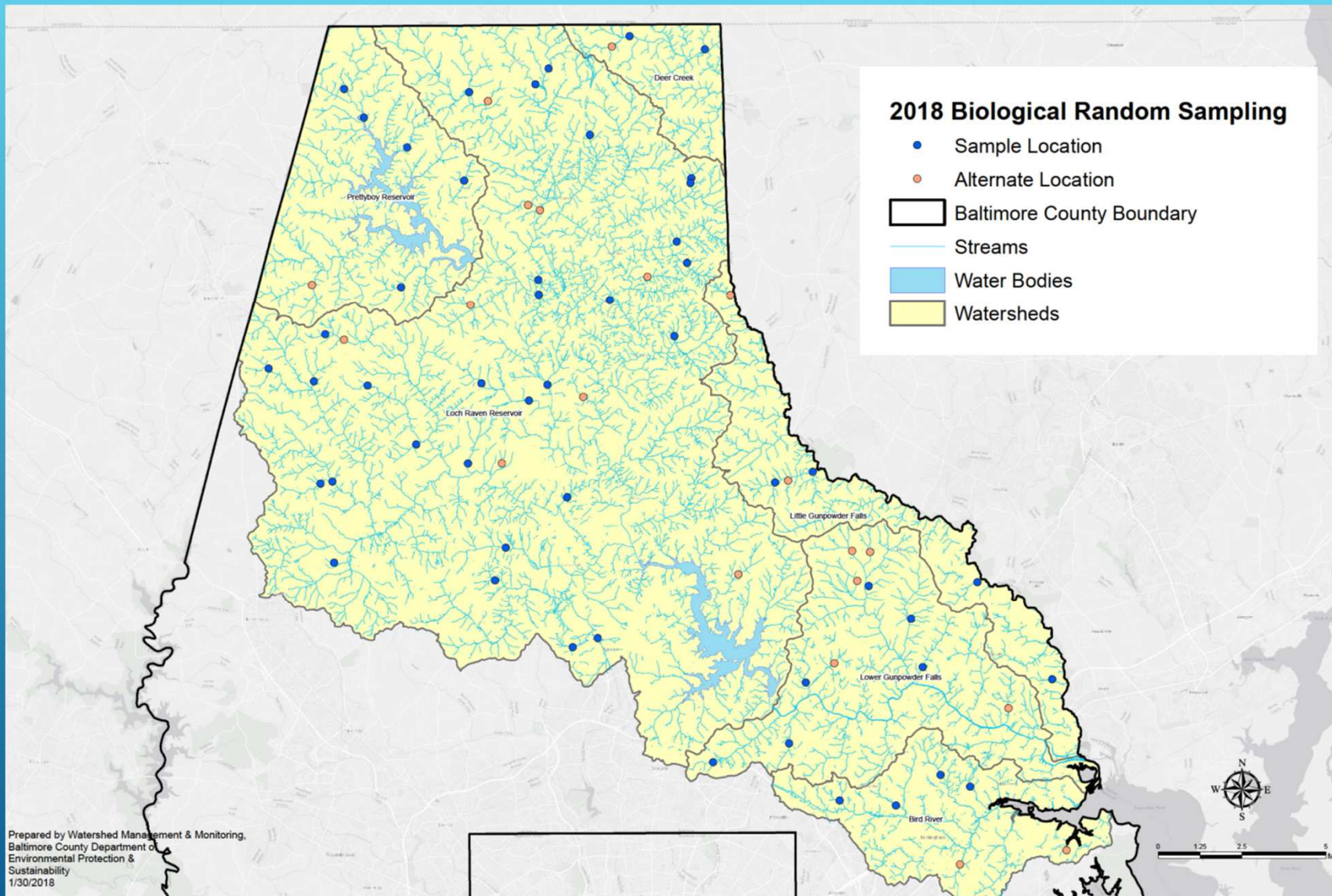


- 2018 County Sampling Locations
- ▭ Baltimore County Boundary
- Streams
- Water Bodies
- Watersheds



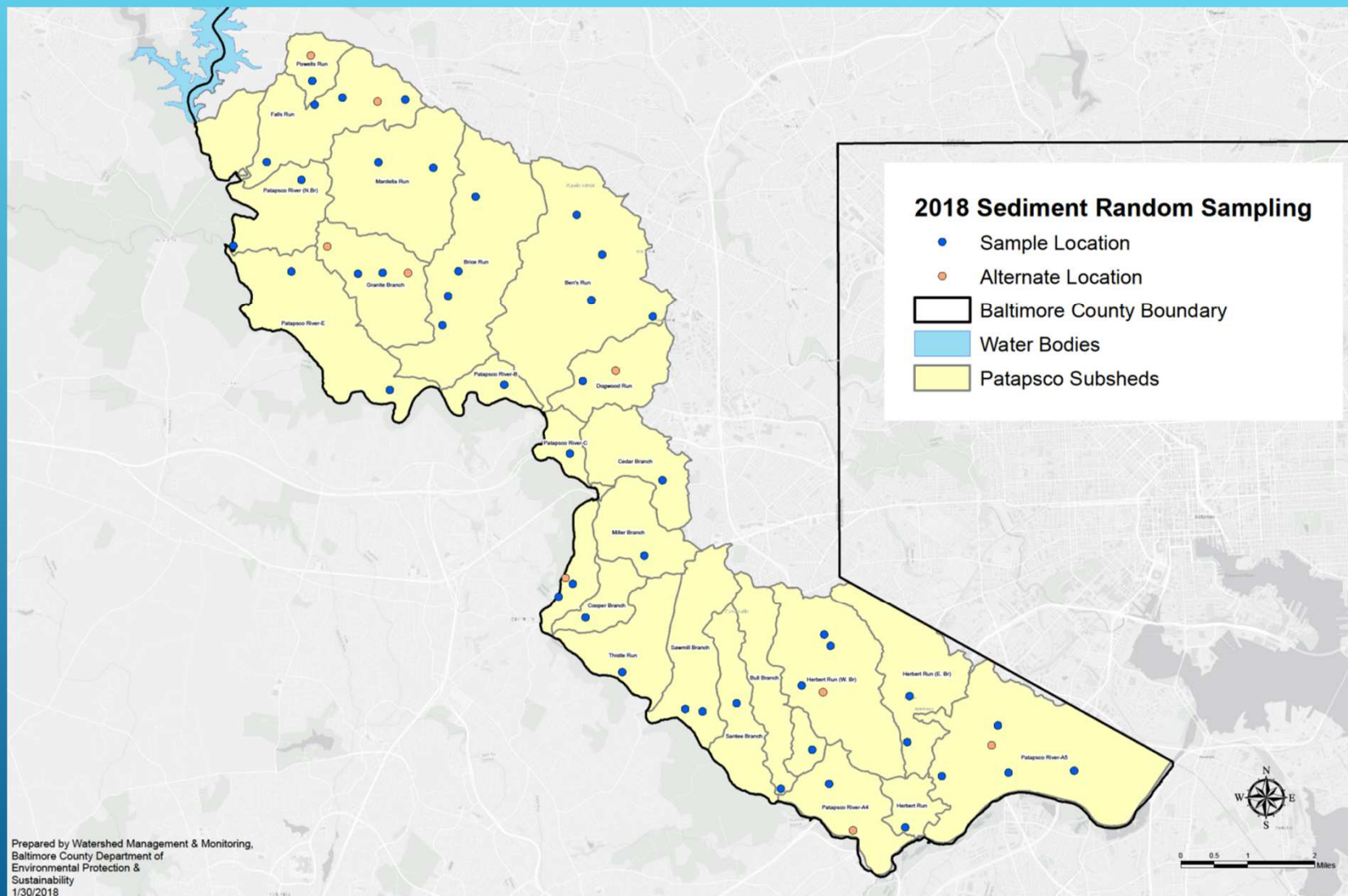
BIOLOGICAL RANDOM POINTS

DEER CREEK
PRETTYBOY
LOCH RAVEN
LITTLE GUNPOWDER
LOWER GUNPOWDER
BIRD RIVER



SEDIMENT TMDL RANDOM POINTS

PATAPSCO
WATERSHED



QUESTIONS?

Sarah Witcher

Baltimore County Department of
Environmental Protection and
Sustainability

410-887-2904

switcher@baltimorecountymd.gov



**Baltimore County Executive Kevin Kamenetz
and the County Council**



CLEAN GREEN COUNTY

