



Dear Conference Center Guest,

On Friday, December 6, 2019, we will have a full house. While we offer complimentary parking, we estimate there will not be enough spaces to accommodate all of our guests and their cars. In order to get everybody to their meeting quickly and safely, I ask that you kindly consider **alternative transportation** to and from MCC, such as:

1. **Consider carpooling.** Carpooling is not only better for our environment, but will allow more guests to park on site.
2. **Try the Light Rail, Amtrak or MARC train.** Our complimentary shuttle picks up from the N. Linthicum Light Rail and the BWI Amtrak stations. When you arrive at the station, please call us at 410-859-5700 ext. 0, to arrange a shuttle pickup.
3. **Let someone else drive!** You might also consider paid services such as Lyft™ and Uber™. Both companies offer first-time user discounts.

If you choose to drive and cannot find a space on property, we have made arrangements for overflow parking with our neighbors at Hoyts Movie Theater. Please see the attached maps. Our hotel shuttle will run continuously through all parking areas from 7:00AM until 9:30AM, and again from 4PM to 6:30PM. Please see the designated shuttle stop areas below. For the health-conscious, Hoyts Movie Theatre is .7 miles – or about a 15 minute walk from MCC.

We look forward to showing you our hospitality and appreciate your cooperation on this peak occupancy day. If you have any questions or special considerations, please do not hesitate to contact me.

Kindest Regards,

John

John A. Krikorian
Director of Operations
jkrikorian@mccbwi.org

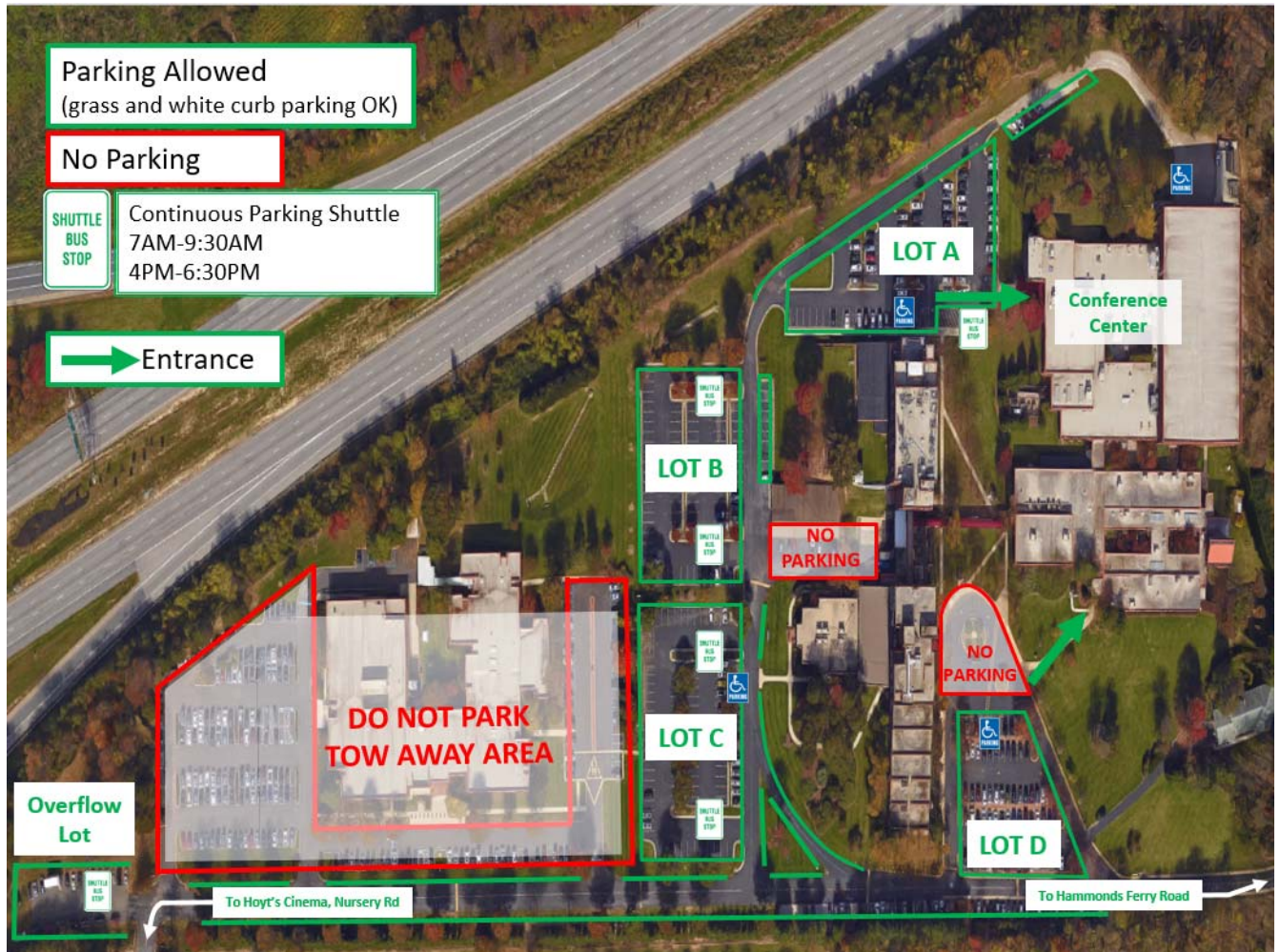
Note:

Please do not park in the lots at 700 Maritime Blvd (1-story building at Aero Drive entrance). Those lots do not belong to MCC and cars will be towed.



Maritime Conference Center Parking
692 Maritime Blvd, Linthicum Heights, MD 21090

Parking is allowed in Lots A, B, C, D and the Overflow Lot. Parking is also allowed on grassy areas along Maritime Boulevard and along white curbs. There is gravel parking adjacent to Lot D, and at the far end of Lot A up the hill. Please pull your car straight in or back in the gravel spaces. Do not park sideways.





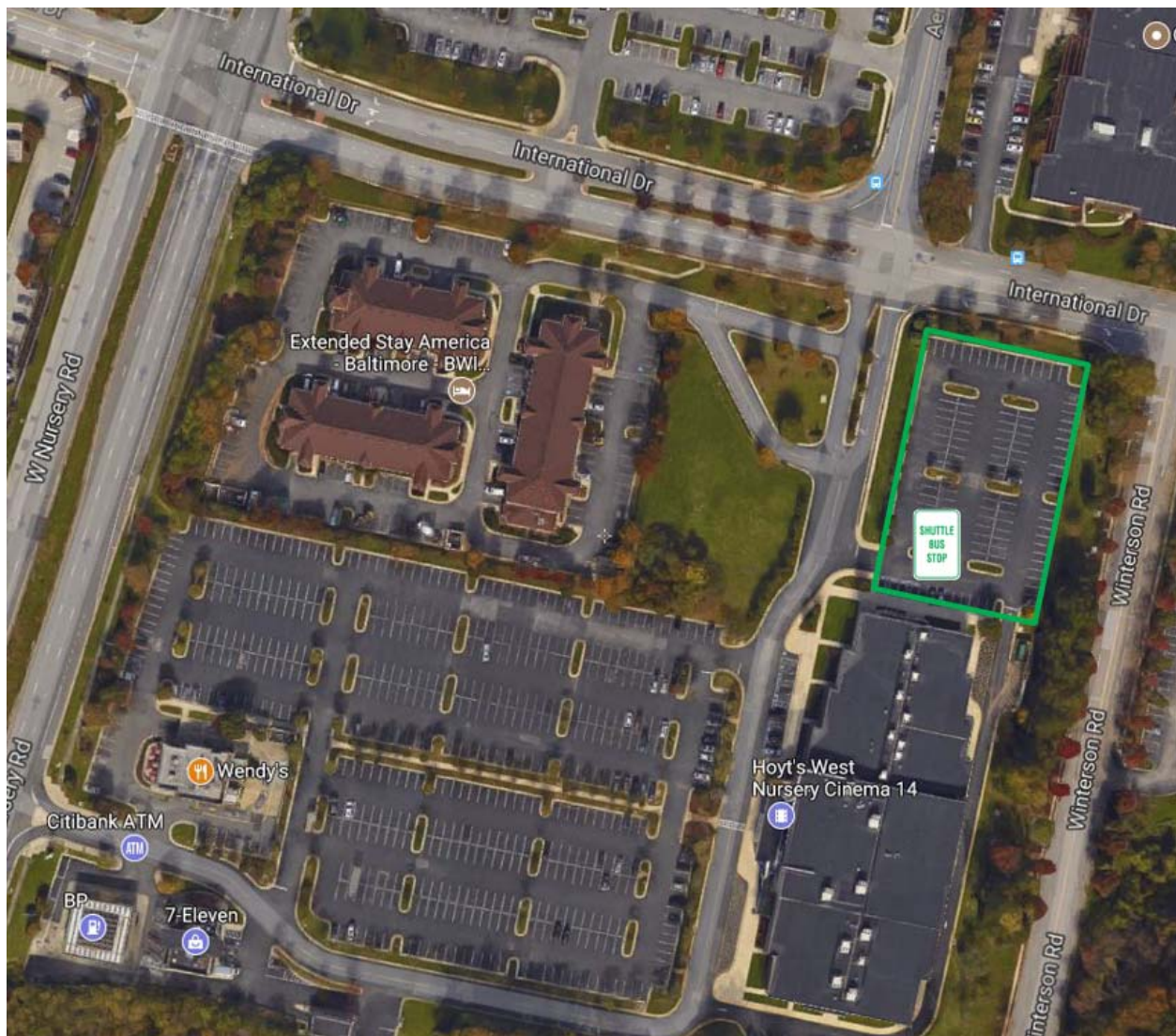
Hoyts Movie Theater Parking

1591 Nursery Rd, Linthicum Heights, MD 21090

Lot is located at the intersection of Aero Drive and International Drive. Maritime Shuttle stop will be clearly marked with yellow cones.

From MCC property, exit gate at Aero Drive and proceed forward approximately 3 blocks. Hoyts parking is straight ahead.

If the shuttle does not arrive on time, please call us at 410-859-5700 x0



*Neither Hoyts nor MCC are responsible for guest vehicles. Parking is at your own risk in all lots.
Please lock cars and take valuable belongings with you.*