

2024-2025 HUNTING AT TUCKAHOE STATE PARK

Approximately **1,000 acres** of woodlands have been designated for forest game, upland game, migratory Canada goose (lottery only), and deer hunting at Tuckahoe State Park. Hunters may enter the park Monday thru Saturday, one (1) hour before sunrise and remain until one (1) hour after sunset. **Hunters must comply with all state and federal game laws, as well as Maryland Park Service regulations.** Trapping is not allowed.

Hunters must sign in to hunt before entering the hunting area daily **and SIGN OUT upon leaving**. The hunter's sign-in box is located at the maintenance facility on the corner of Crouse Mill and Eveland roads.

Tuckahoe State Park adheres to all seasons, bag limits and regulations as outlined in the 2024-2025 Maryland Guide to Hunting and Trapping. During respective seasons, hunters may carry firearms across closed sections of the park to reach open hunting land, provided their weapons are unloaded. Firearms are prohibited in all areas during the remainder of the year.

The map on the reverse outlines the approximate boundaries of the hunting area. It is important to note that hunting is not permitted within 150 yards of a dwelling, public road or adjacent property line. Please respect these safety zones. *No weapons, loaded or unloaded, are allowed in the 400 acres of the Adkins Arboretum.*

Use of game shooting stands is limited to those of a temporary nature which can be removed at the end of the day. Use of vehicles within the confines of the designated hunting area is prohibited except on public highways and at approved parking areas. Tuckahoe State Park has two (2) disabled hunter access areas available (see reverse).

BOBWHITE QUAIL: Bobwhite quail hunting is prohibited. This closure, combined with recent habitat improvements, will give the population a chance to recover from previous low numbers.

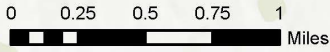
MIGRATORY CANADA GOOSE (AND WATERFOWL): Four (4) field pits are available **by lottery permit only**. Applications at www.dnr.maryland.gov/publiclands/Pages/eastern/tuckahoe.aspx. Snow goose hunting is available after the Canada goose season ends on a first-come, first-served basis.

Requests for further information may be directed to:

Tuckahoe State Park
13070 Crouse Mill Road
Queen Anne MD 21657
(410) 820-1668

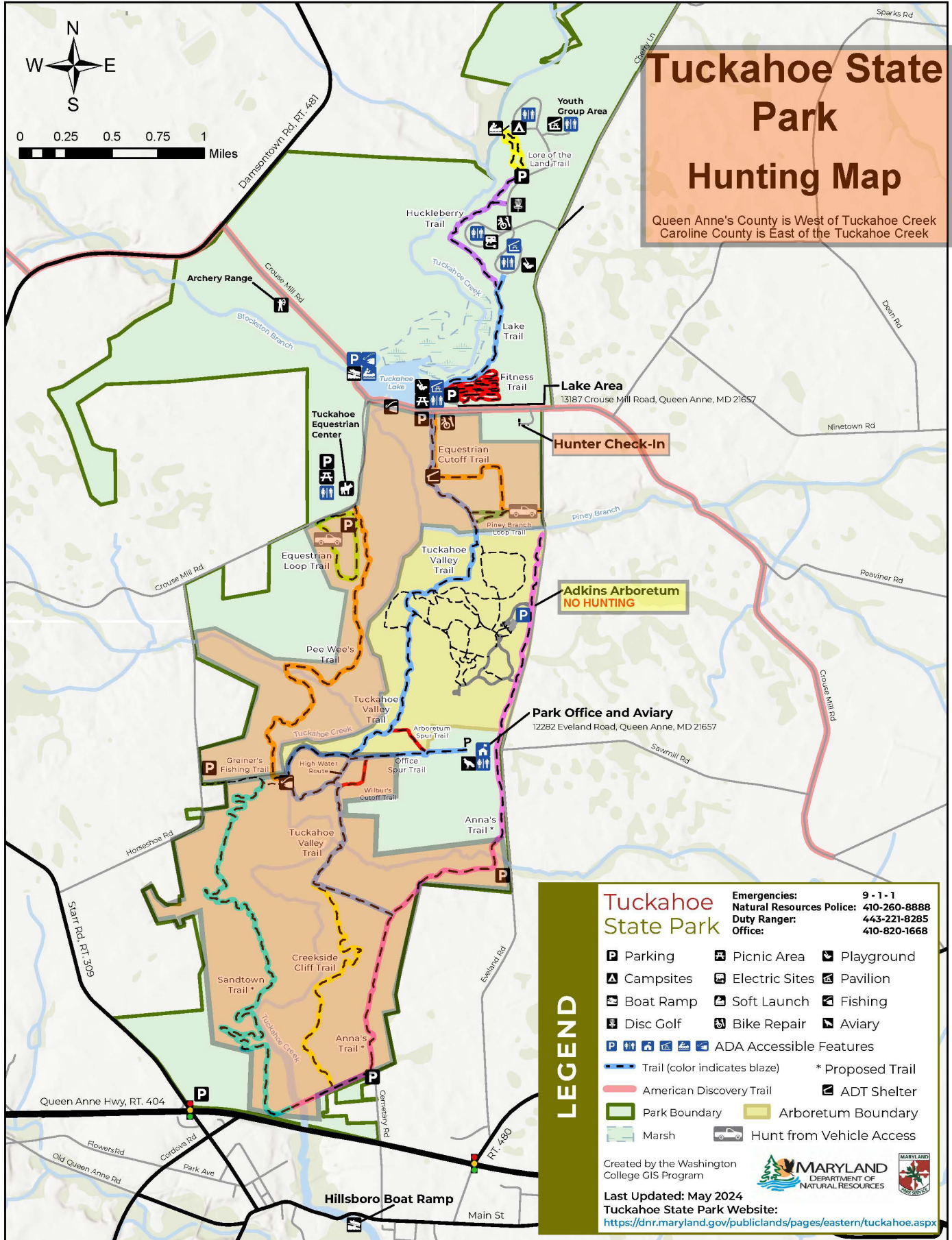
tuckahoe.statepark@maryland.gov

**In the event of an emergency, contact the DNR
Communications Center at 1-410-260-8888**



Tuckahoe State Park Hunting Map

Queen Anne's County is West of Tuckahoe Creek
Caroline County is East of the Tuckahoe Creek



LEGEND

- Tuckahoe State Park**
- Emergencies:** 9-1-1
Natural Resources Police: 410-260-8888
Duty Ranger: 443-221-8285
Office: 410-820-1668
- Parking
 - Campsites
 - Boat Ramp
 - Disc Golf
 - ADA Accessible Features
 - Trail (color indicates blaze)
 - American Discovery Trail
 - Park Boundary
 - Marsh
 - Picnic Area
 - Electric Sites
 - Soft Launch
 - Bike Repair
 - ADA Accessible Features
 - * Proposed Trail
 - Arboretum Boundary
 - Hunt from Vehicle Access
 - Playground
 - Pavilion
 - Fishing
 - Aviary
 - ADT Shelter

Created by the Washington College GIS Program

Last Updated: May 2024
Tuckahoe State Park Website:
<https://dnr.maryland.gov/publiclands/pages/eastern/tuckahoe.aspx>