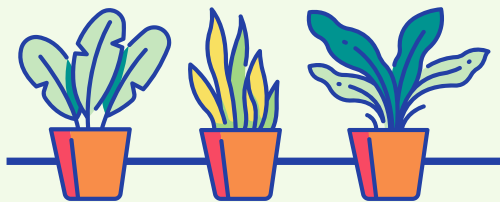


Flora Safari



Trees and plants are hosts to many critters and insects. They are the key to their every day life and survival. Today we are going to venture outside to find living trees or plants around your home. We will be observing the living plants you find and the areas around them

Bark or leaf rubbing

Bark or leaf rubbing

Exploration Info:

What time did you start your safari?

Where was your safari?

What was the weather like?

Basic needs checklist:

Is there ample room for critters of any size to live on this plant/tree?

Is there a water source? If so, where?

Does the plant provide space for the critter?

Signs of life

List below the signs of life you found that help to know the tree/plant is a host plant:

Take a picture of your tree or plant's leaves and bark. If you cannot take a picture, makes sure you get a good leaf rubbing. Let's bring this inside to try to identify the plant!

Leaf rubbing:

