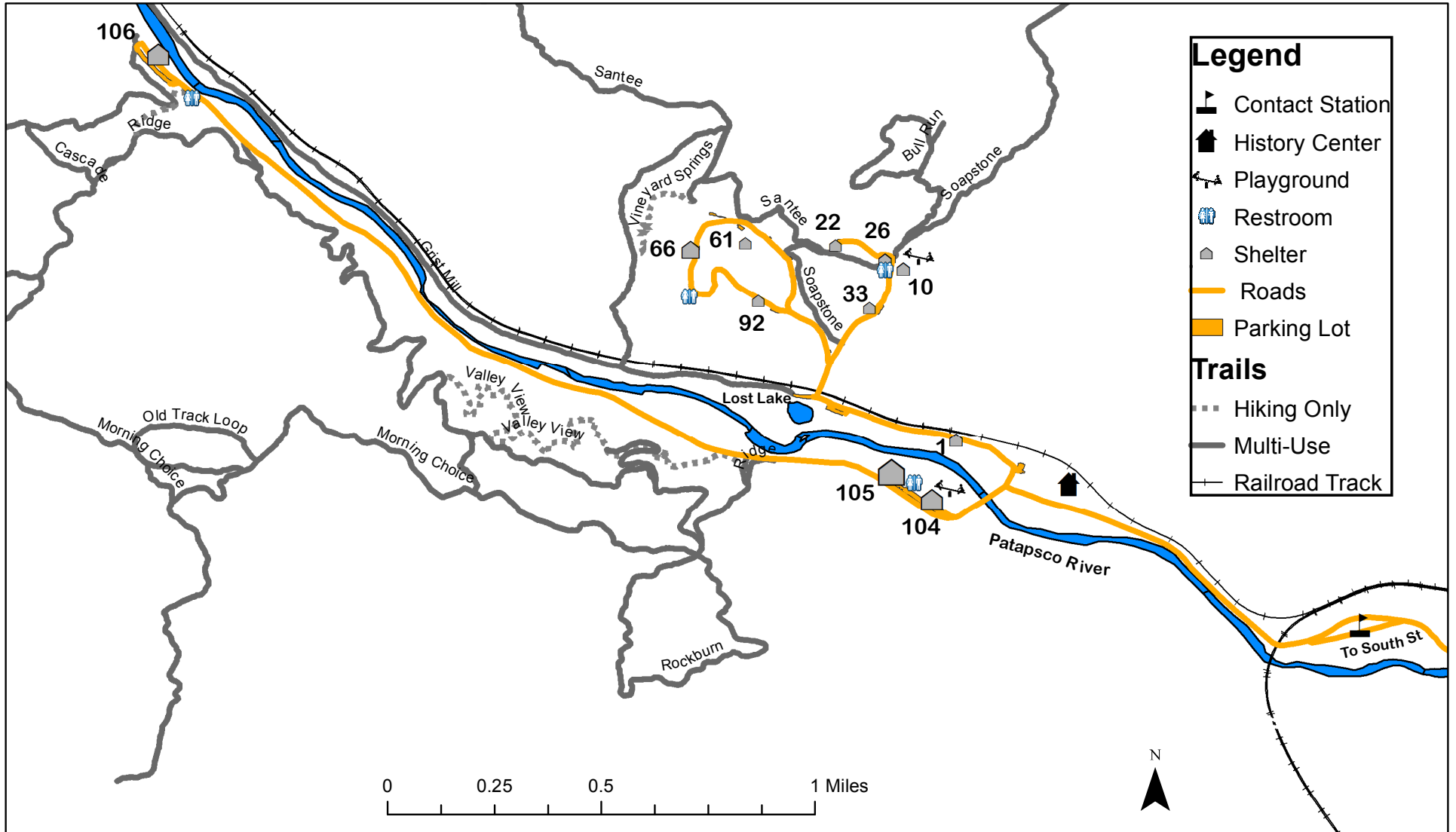


Avalon, Orange Grove and Glen Artney Areas - Patapsco Valley State Park



The **Avalon, Orange Grove and Glen Artney Areas** of Patapsco Valley State Park is open year round.

Park Hours are 9am until Sunset.

Service Charges

\$2 per person in-state, \$4 per person out-of-state Monday-Friday

\$3 per person in-state, \$5 per person out-of-state Weekends and Holidays

Admitted Free:

Children buckled in safety seats

Senior citizens 62 & older **with the Golden Age Pass** (requires one-time \$10 administrative fee – information available at <http://www.dnr.maryland.gov/publiclands/goldenage.asp>),

People with the **Access Maryland State Park Pass** for persons with disabilities, members of the Maryland National Guard &

All active duty military personnel who display their active military identification card (complimentary access is permitted for card holder only).

Entry service charges are not included in pavilion/shelter rental costs; they are in addition to those costs. Those wanting to prepay the service charges need to contact the park office before the reservation date.

The Honor System may in effect at certain times of the year.

All Maryland State Parks are “**trash-free**”, meaning there are no trash cans to ruin the view, or to attract flies, bees, and other wildlife. Visitors are asked to take their trash home with them when they leave.

The use of amplifier, loudspeaker or similar is allowed by permit only. Permits must be obtained in advance at the Park Headquarters

Alcoholic beverages are prohibited except by permit in designated shelters areas, and may be consumed only by those over 21 years of age.



Pets are allowed in the Avalon, Orange Grove and Glen Artney Areas. Pets are not allowed in Restrooms or on playgrounds and must be on a leash, under your control at all times

Park in designated parking spaces only.

From the Beltway (I-695) take Rt. 1 (Exit 12-A) toward Elkridge. Follow Rt. 1 South about 3 miles to South St. Turn right. Park entrance is on the left.

From I-95 take I-195 to Rt. 1 (Exit 3) toward Elkridge to South St. Turn right. Park entrance is on the left.

From Howard County follow Rt. 1 through Elkridge and into Baltimore County. Turn left on South St. Park entrance is on the left.

Patapsco Valley State Park

Avalon Area

5120 South Street

Baltimore MD 21227

GPS N 39-13'11.0 W 076-42'18.3

Reservations:

1-888-825-2267

<http://reservations.dnr.state.md.us>

Park Headquarters

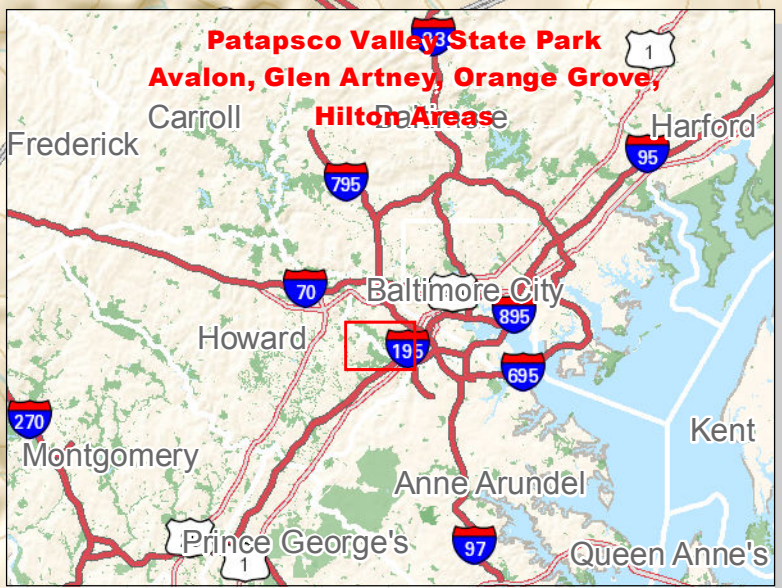
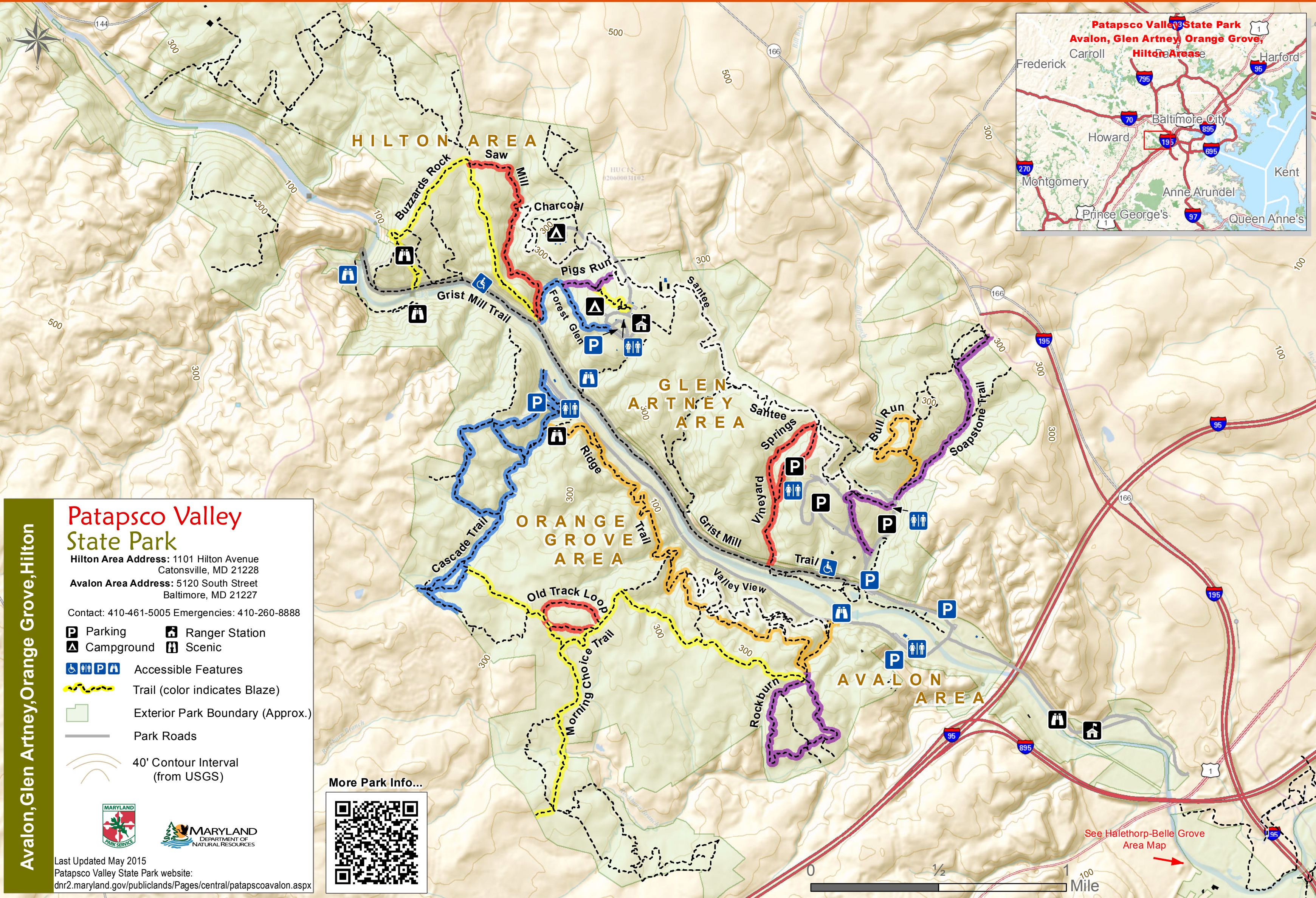
410-461-5005

8020 Baltimore National Pike

Ellicott City, Md 21043

DNR TTY 410-971-3683

Park Watch 1-800-825-PARK



Avalon, Glen Artney, Orange Grove, Hilton

Patapsco Valley State Park

Hilton Area Address: 1101 Hilton Avenue
Catonsville, MD 21228

Avalon Area Address: 5120 South Street
Baltimore, MD 21227

Contact: 410-461-5005 Emergencies: 410-260-8888

- Parking
- Ranger Station
- Campground
- Scenic
- Accessible Features
- Trail (color indicates Blaze)
- Exterior Park Boundary (Approx.)
- Park Roads
- 40' Contour Interval (from USGS)

More Park Info...

Last Updated May 2015
Patapsco Valley State Park website:
dnr2.maryland.gov/publiclands/Pages/central/patapscoavalon.aspx



See Halethorp-Belle Grove Area Map