

INNOVATION AND PARTNERSHIP
IN
LAND CONSERVATION:
FIVE LIGHTNING PHOTO TALKS

2016 Maryland Land
Conservation Conference

CREDITING LAND CONSERVATION IN TOTAL MAXIMUM DAILY LOAD

Jim Baird
American Farmland Trust

THE LAND AND WATER QUIZ SHOW

Or “How land trusts saved the Bay”

Q1 What does TMDL Stand For?

- ❖ Too many darn lawyers? 
- ❖ Total Daily Maximum Load 


Q2 Load of what? (Hint – rhymes with scoop, troop and stoop! 

- ❖ Pollution

Q3 What’s the best and cheapest way to reduce pollution?

- ❖ Wish upon star? 

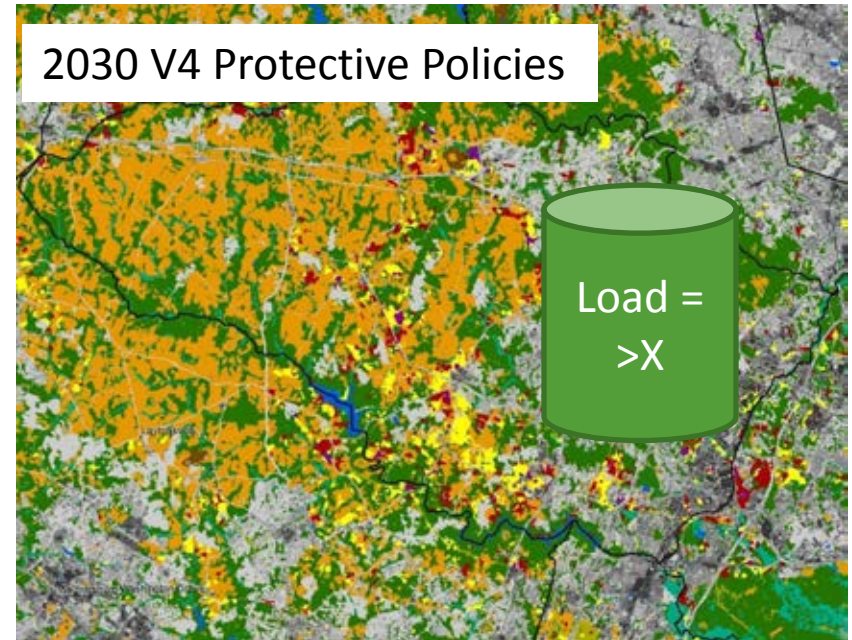
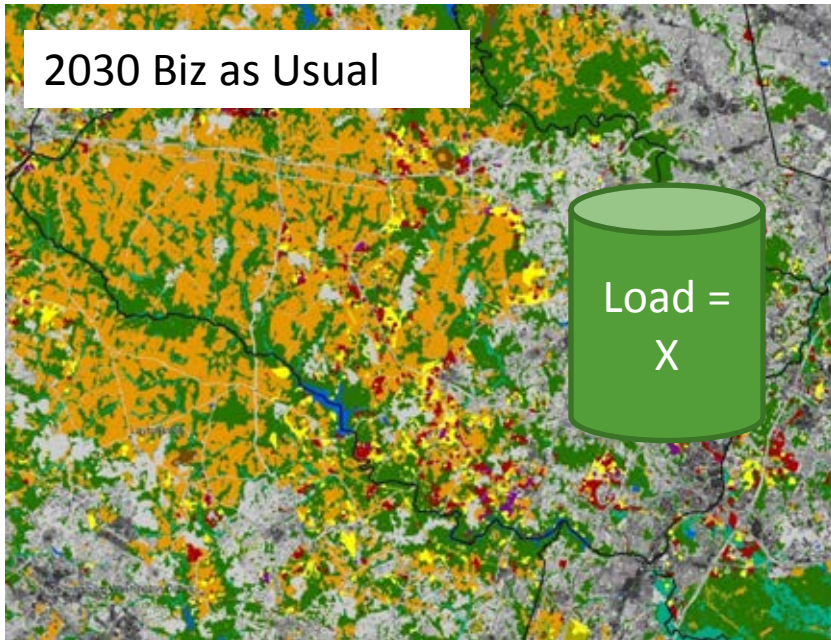
Don't create it in the first place!

- Where can you find land that is not going to create more pollution?
- Under pavement 
- Under an easement.
- Protected Forests and WELL MANAGED farms
Won't be converted to a more polluting land use.
Avoids increase!
- WHO PROTECTS LAND FROM BEING DEVELOPED?

LAND TRUSTS & PARTNERS!

So, how does the TMDL incentivize Land protection now???????

- It doesn't
- But it could.....



What do we need to make this
happen??

Find out at

Classroom 2 @ 1:00 PM

Accelerating Land Conservation for Water
Quality – New Funding & Approaches

Megan Gallagher

BALTIMORE'S FOREST PATCHES

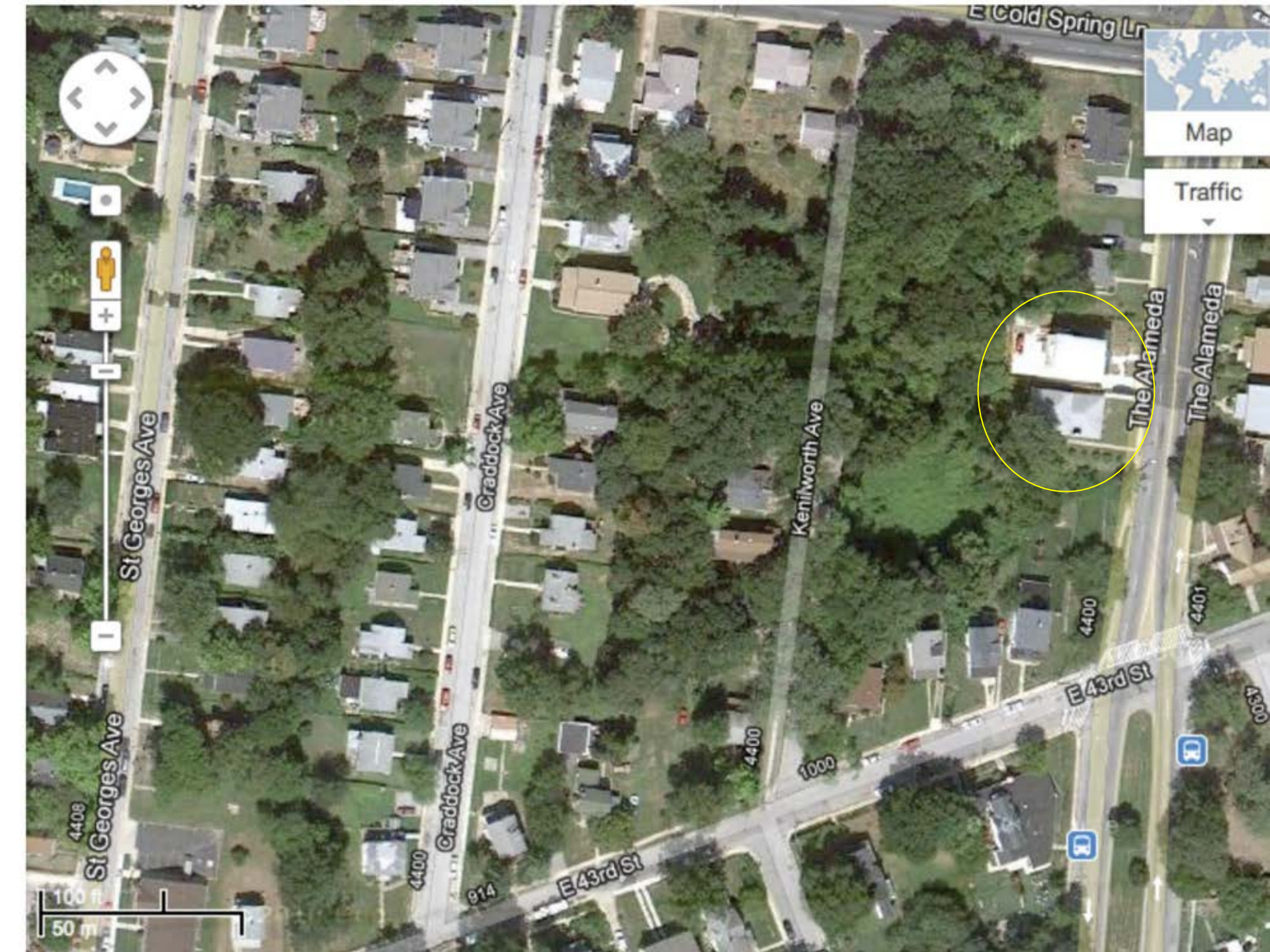
Miriam Avins

Baltimore Green Space



**baltimore
greenspace**

**Miriam Avins
Katie Lautar**



4408

St Georges Ave

St Georges Ave

4400

Craddock Ave

Craddock Ave

914

E 43rd St

4400

1000

Kenilworth Ave

4400

E 43rd St

4401

The Alameda

The Alameda

4300



Notable Trees

large American elm • willow oak
• black gum

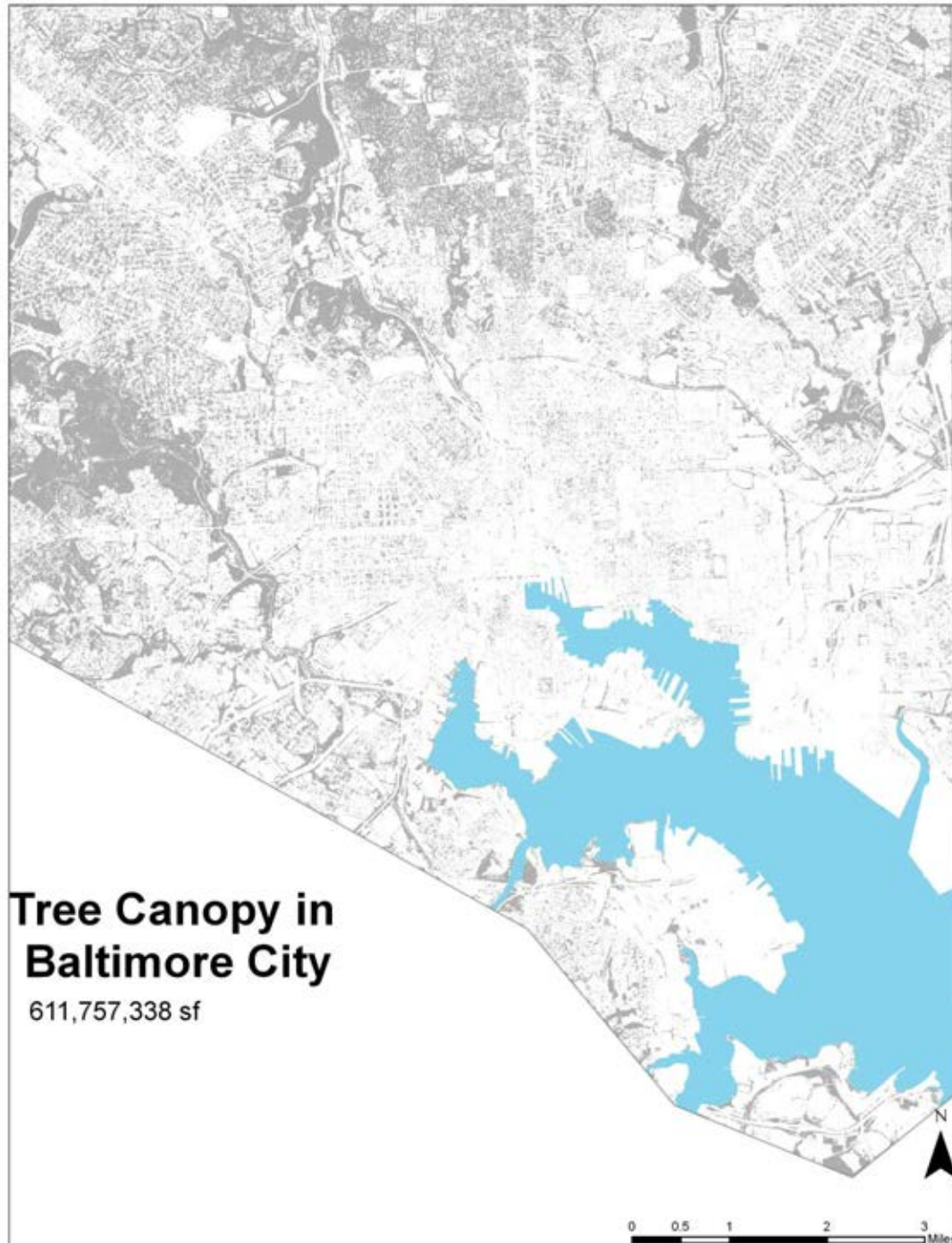
Notable Birds

Red-eyed Vireo • Scarlet Tanager
• Great-crested Flycatcher •
Baltimore Oriole • White-eyed
Vireo • Least Flycatcher



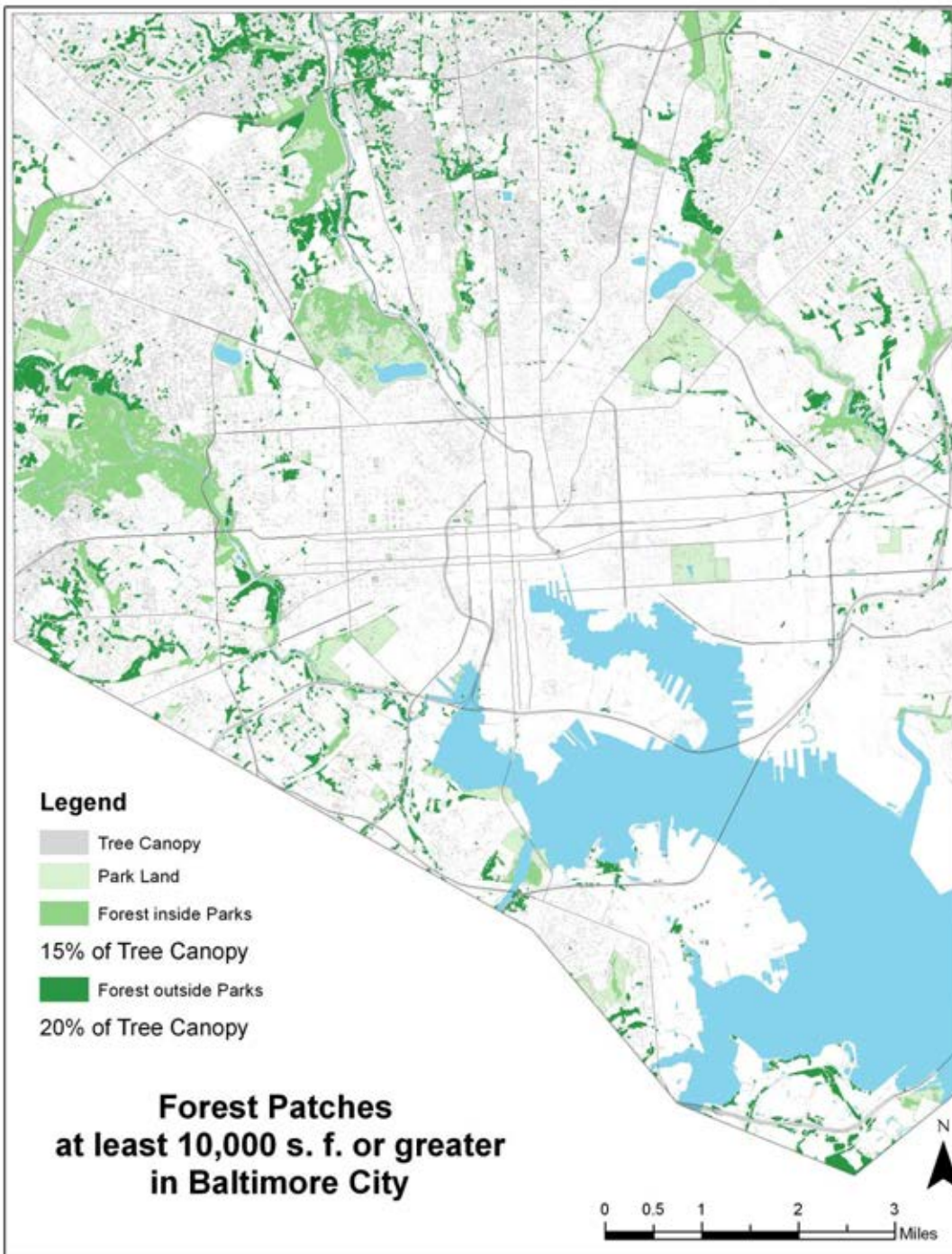


14,000 acres



**Tree Canopy in
Baltimore City**

611,757,338 sf

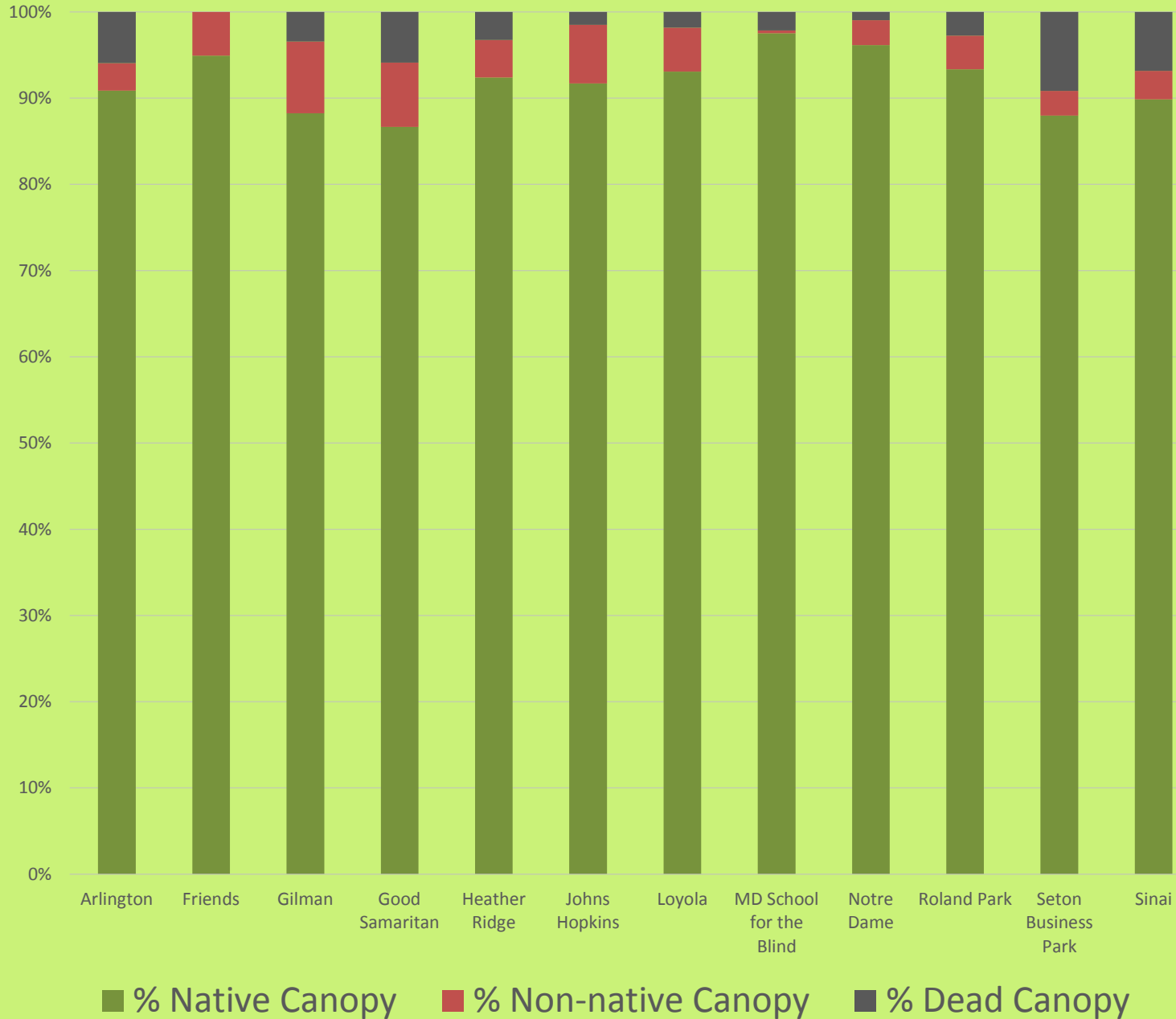


2,154 acres
of forest patch
outside parks
(20% of city's
tree canopy)





Natives, Non-natives, and Dead Trees

















GOVANS URBAN FOREST

A PROTECTED URBAN FOREST

Sign courtesy
Friends of School



**HISTORIC WILSON PARK
COMMUNITY
WOODS PATCH**



Springfield Woods



ENJOY AND RESPECT

THIS PROTECTED PLACE

STREAM →





We Lead



We Support Leadership

The Stewards Do the Rest





They Teach Us

FOREST PATCH **FIRST AID**



CREATED BY KATIE LAUTAR



**We Teach
Others**

GREATER BALTIMORE WILDERNESS COALITION

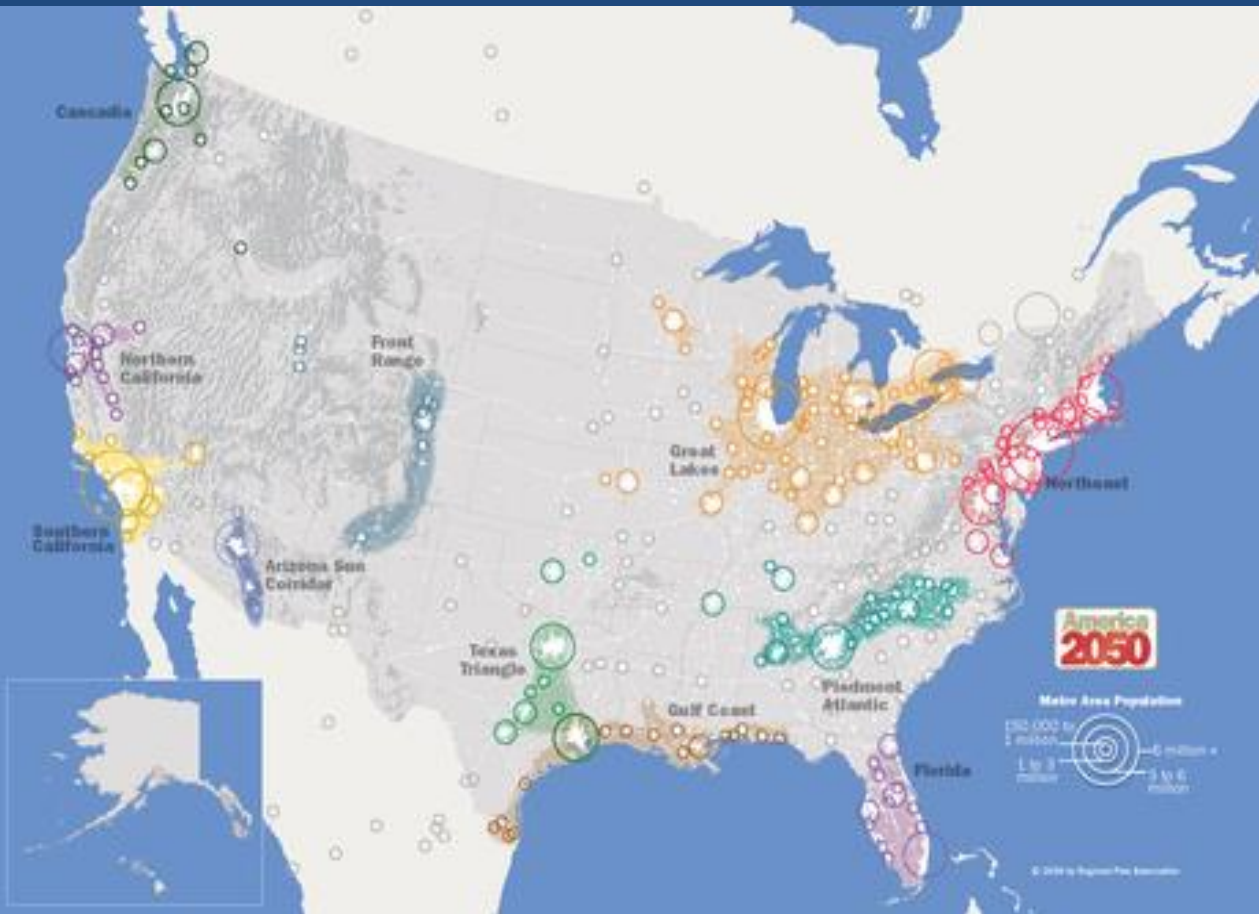
Gary Allen
Center for Chesapeake Communities



Scaling UP

Collaborative
Approaches to
Large Landscape
Resilience

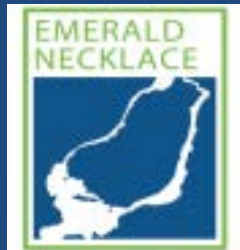
The Nature of Mega-regions



BY 2050 - 90% of all Americans in urban areas will live in eleven concentrated Mega regions

Chicago Wilderness

A regional alliance dedicated to
protecting nature and enriching life



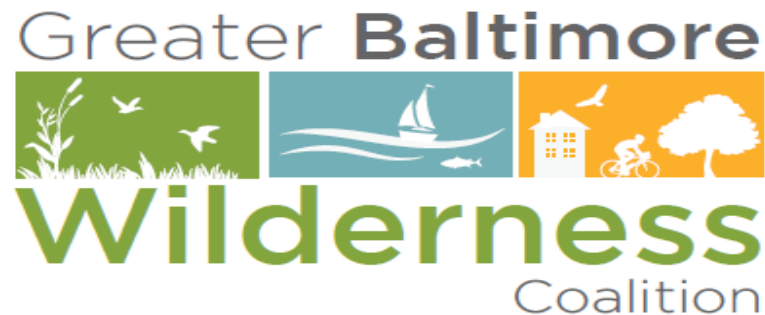
Greater **Baltimore**



Wilderness

Coalition

*Greater Baltimore Wilderness:
Green Infrastructure for Regional
Resilience and Equity*



Greater Baltimore Wilderness :

Envisioning the Growth of a Connected and Protected Green Infrastructure Network in the Heart of Maryland

- Resilience
- Biodiversity
- Equity
- Discovery

Addressing the Impacts of Changing Climate



- Hazard mitigation
- Sea Level Rise
- Wave Impacts
- Storm Surge
- Flooding

Green Infrastructure Solutions – Natural Networks



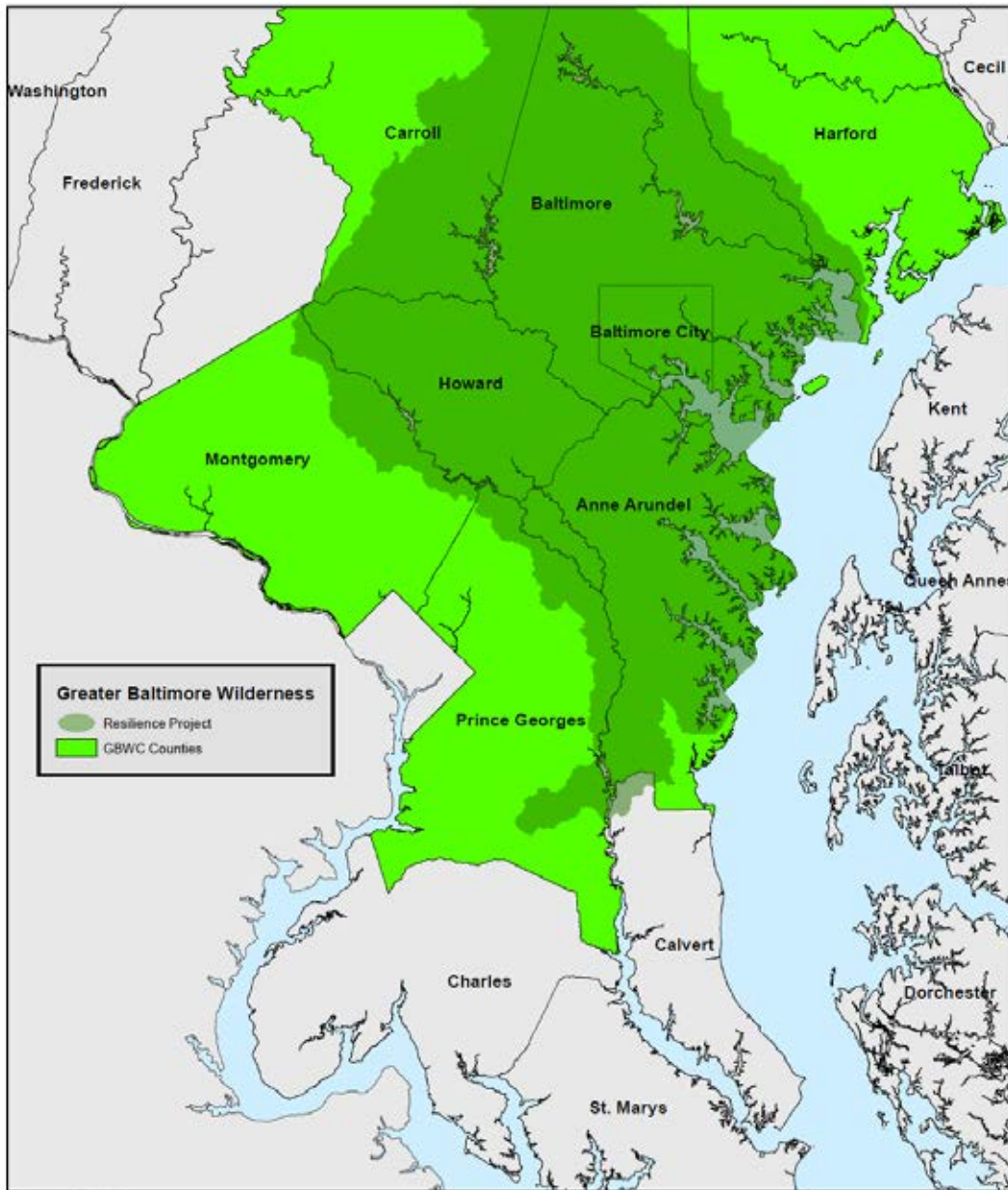
Green Infrastructure Solutions – “Nature-based”



Resilience: Four Principal Objectives

- Map existing green infrastructure contributing to coastal storm resilience
- Prioritize and map green infrastructure enhancement opportunities
- Evaluate best governance mechanisms for managing and protecting green infrastructure
- Build a better regional green infrastructure network

Greater Baltimore Wilderness Coalition & Resilience Project Area



The Policy Context for Green Infrastructure Protection & Enhancement in the Resilience Key Takeaways

- Maryland's comprehensive planning, forest conservation, and stormwater management requirements have a large influence over local policy and action to protect or expand green infrastructure at multiple scales.
- Localities generally meet but do not exceed state thresholds for protection of environmentally sensitive features.
- There is little evidence of ongoing or sustained regional planning for green infrastructure protection or expansion.
- While hazard mitigation/climate adaptation plans sometimes recommend using green infrastructure to enhance resilience, there is no evidence of combined hazard mitigation into green infrastructure planning processes.

WHAT TO DO
WHEN THE MAYOR SAYS NO!

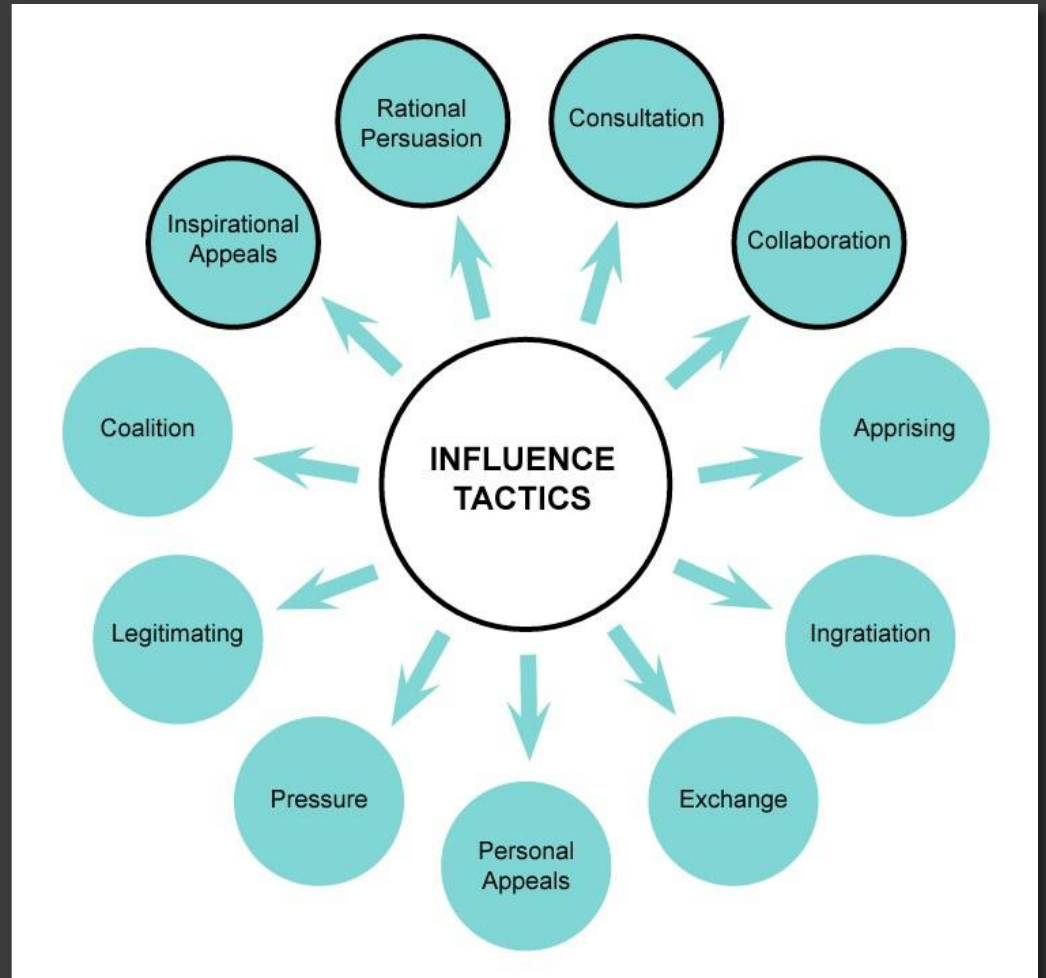
Sean Robertson
Land Trust Alliance



WHAT TO DO...

WHEN THE MAYOR SAYS NO!

Sean Robertson
Eastern Advocacy & Outreach Manager
Land Trust Alliance
May 5, 2016



Your Protagonist





© Carl Johnson
www.carljohnsonphoto.com

Anchorage Daily News

Monday, July 26, 2010

BREAKING NEWS AT ADN.COM

Alaska's Newspaper

CAMPBELL CREEK ESTUARY



Phil Shepard, executive director of Great Land Trust, is working on a project to purchase the 60-acre Campbell Creek estuary and donate it to the city.

Park predicament

Mayor's rejection of land deal has conservation group scrambling

By ROSEMARY SHINOHARA
rshinohara@adn.com

The conservation group that spent years pulling together a deal for Anchorage to get a coastal park at the Campbell Creek estuary is scrambling to find ways to overcome city objections, or to find another way to

along Campbell Creek's last meander before flowing into Cook Inlet, the mayor said the city wanted to "explore other possibilities" for spending that money.

ACCESS TO A REFUGE

The land in question is mostly undeveloped, with old growth forest on the



Archives expose Afghan struggles

GRIM: 92,000 documents detail how despite coalition efforts Taliban is stronger.

The New York Times

A six-year archive of classified military documents made public on Sunday offers an unvarnished, ground-level picture of the war in Afghanistan that is in many respects more grim than the official portrayal.

The secret documents, released on the Internet by an organization called WikiLeaks, are a daily diary of an American-led force often starved for resources and attention as it struggled against an insurgency that grew larger, better coordinated and more deadly each year.

The New York Times, the British newspaper The Guardian and the German magazine Der Spiegel were given access to the voluminous records several weeks ago on the condition that they not report on the material before Sunday.

The documents — some 92,000 reports spanning parts of two administrations from January 2004 through December 2009 — illustrate in mosaic detail why, after the United States has spent almost \$300 billion on the war, it still has not been won.

INSIDE

MISSING: Search widens for 2 US sailors.

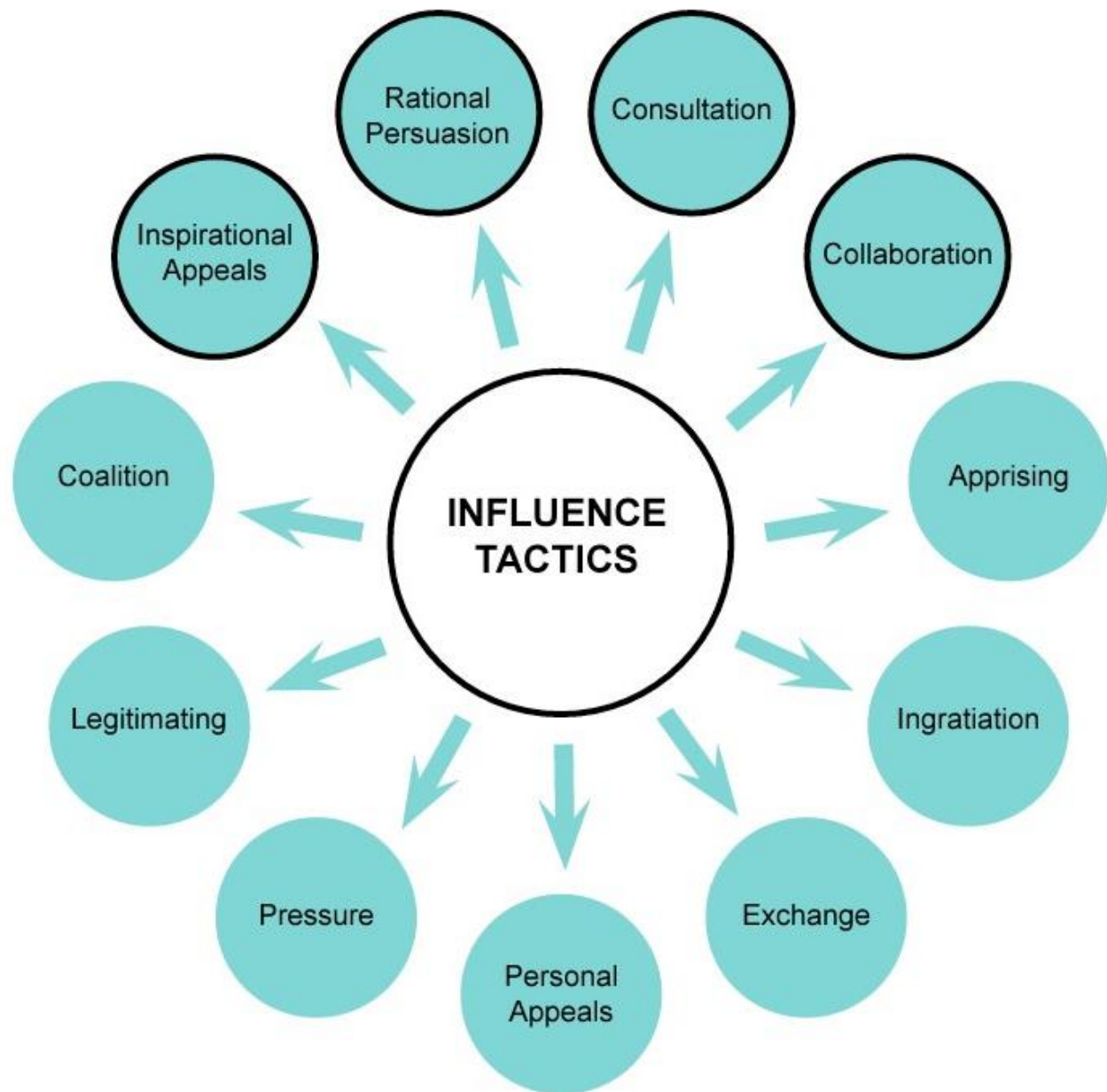
Page A-6

Mayor Sullivan upsets plans for preserving lands at creek estuary

GREAT LAND TRUST: Conservation organization would lose \$150K.

By ROSEMARY SHINOHARA
rshinohara@adn.com

Anchorage Mayor Dan Sullivan on Friday turned down a proposal for the city to help create a 60-acre park west of Campbell Lake at the



Campbell Creek Estuary
Economic Analysis
Anchorage, Alaska

Legend

-  Parcels
-  Roads
-  Comp #1 (48 developed lots)
-  Comp #2 (81 undeveloped lots)
-  Comp #3 (53 developed lots)
-  1/4 Mile Buffer
-  Creeks
-  Adjacent Parcels
-  Parcels in 1/4 Mile Buffer
-  Subject Properties

0 1,100 2,200
 Feet



GREAT LAND TRUST
 Working with willing landowners and
 other partners to conserve Southcentral
 Alaska's lands and waterways

619 E Ship Creek Ave.
 Suite 321
 Anchorage, Alaska 99501
 (907) 278-4998
 davidm@greatlandtrust.org
 www.greatlandtrust.org

Comparable #1
 48 Developed Lots
 40.32 Acres
 2007 Total Tax Assessed Value
 (Buildings and Lots): \$15,503,600
 Total 2007 Tax Revenue: \$225,422
 Tax Revenue per Acre: \$12,727

Parcels within 0.25 Mile
 Total Increase in Tax Revenue: \$285,861
 (25% Increase for Adjacent Parcels,
 10% Increase for Parcels within 0.25 Mile)

Adjacent Parcels
 25% Increase in Tax Revenue: \$69,016

Campbell Creek Estuary Parcels
 2007 Total Tax Assessed Value: \$4,691,500
 Total 2007 Tax Revenue: \$68,214
 Total potential tax revenue of developable
 area (based on average per acre revenue
 of comps): \$255,798.78

Comparable #2
 61 Undeveloped Lots
 35.03 Acres
 2007 Total Tax Assessed Value
 (Land only): \$2,805,200
 Total 2007 Tax Revenue: \$40,788
 Tax Revenue per Acre: \$1,992

Comparable #3
 53 Developed Lots
 33.4 Acres
 2007 Total Tax assessed Value
 (Buildings and Land) \$22,494,400
 Total 2007 Tax Revenue \$327,069
 Tax Revenue per Acre: \$20,098



Legitimizing, Coalition & Personal Appeals





ANCHORAGE WAY
P.O. Box 241774 • Anchorage, Alaska
<http://www.aaw.org>


September 7, 2010
Mayor Dan Sullivan
Municipality of Anchorage
632 W. 6th Ave.
Anchorage, AK 99501

Re: Campbell Creek Estuary Project

Dear Mayor Sullivan,

As you are well acquainted with the mission of the Anchorage Way and enhance the waterways, wetlands, and upland riparian areas, we are taking on this matter. In fact, riparian areas are being developed. The Campbell Creek watershed, a part of that amazing system.

As Anchorage has evolved, our creeks have been put into culverts, and now...



Audubon ALASKA

August 6, 2010

Mayor Dan Sullivan
Mayor's Office
632 W 6th Avenue, Suite 840
Anchorage, Alaska 99501

Dear Mayor Sullivan,

Media reports indicate that you recently expressed interest in purchasing the Campbell Creek Estuary parcel of \$1.6 million in Coastal Impact Assistance Program.

The purpose of this letter is to express Audubon Alaska's support regarding the purchase of the Campbell Creek Estuary for a long time, and will very much support the Municipality of Anchorage.



Anchorage Park Foundation

Rasmuson Foundation Board of Directors

On behalf of the Anchorage Park Foundation, I am proud to acquire the Campbell Creek estuary property to be added to the Anchorage community in addition to enhance and support the Great Land Trust's effort to meet community needs for the benefit of Anchorage citizens.

The Great Land Trust has successfully developed and support for this worthwhile project. I am proud to be a part of this project. I am proud to be a part of this project. I am proud to be a part of this project.

Furthermore, GLT has access to its endowment funds to address the needs of the community and strong partnerships with Municipal staff to address community needs.

**MUNICIPALITY OF ANCHORAGE
WATERSHED & NATURAL RESOURCES ADVISORY COMMISSION
RESOLUTION NO. 2010-02**

A RESOLUTION RECOMMENDING SUPPORT OF THE GREAT LAND TRUST ACQUISITION OF A 60-ACRE PARCEL AT THE CAMPBELL CREEK ESTUARY.
(WNRC Case No. 10-02)

WHEREAS, The Great Land Trust, a local non-profit, has worked in partnership with the Municipality of Anchorage since 1995 to identify properties within its boundaries that have high ecological and public purpose value; and

WHEREAS, it has come to the attention of the Anchorage Watershed & Natural Resources Advisory Commission that Great Land Trust is seeking to purchase a 60-acre parcel at the mouth of Campbell Creek and donate it to the Municipality for parkland; and

WHEREAS, the Anchorage 2020 Anchorage Board Comprehensive Plan contains several policies (# 65, 67, 70, & 84) that address greenbelt acquisition, coastal access, and conservation easements for critical wildlife habitats. One of the Anchorage 2020 Plan's implementation strategies specifies municipal partnerships with non-governmental organizations to acquire conservation easements and the Campbell Creek estuary property is specifically identified as a

Inspirational Appeals & Pressure



Consultation & Collaboration



Another \$1 million, but new friends to raise it



VICTORY! Mayor Sullivan changed his mind!



But that's just the beginning of the story...



Senator Mark Begich invited USFWS Director Dan Ashe & Senator Ron Wyden





Great Land Trust

August 29, 2012

The Campbell Creek Estuary Project featured on the ADN homepage. Senator Mark Begich, Senator Ron Wyden (Oregon), and U.S. Fish and Wildlife Director Dan Ashe accompanied GLT staff on a tour of Campbell Creek Estuary.

<http://community.adn.com/adn/node/162199>

ALASKA'S NEWSPAPER 89,225 visitors viewed adn.com yesterday | alaska

adn.com **orage Daily News** Submit your photos Share your photos of life in Alaska with our readers. Click here

53° 45° - 54° Forecast: statewide Daylight: 6:45 AM - 9:15 PM Alaska Adventure

Web Search powered by YAHOO! SEARCH find

Sports Outdoors Features Money Entertainment Opinion Blogs Photos Classifieds Find n Save

Alaska Newsreader Obituaries Archives TV Listings Movies Music Restaurants Submit Event Legals Jobs Homefinder Cars

Sell it today Place an ad Find

Orleans levees tip under Isaac
Isaac began a drenching slog in the Gulf of Mexico, pushing a rural Louisiana levee and people. The storm spun into a led New Orleans exactly seven Katrina. 9:00 AM
Hurricane Isaac

Incumbents ousted in fight artisan coalition
Incumbent Senate incumbents -- Linda Hat-Su and Tom Wagoner on the tula -- lost to candidates who their membership in the coalition that has ruled the the last four years. 10:50 AM
on results
ers say no to coastal zone 10:50 AM

Politicians tour Campbell Creek estuary project
U.S. Sens. Mark Begich, D-Alaska, and Ron Wyden, D-Ore., U.S. Fish and Wildlife Director Dan Ashe and others toured the

Major MARINE TOURS
Wild-Go Wildlife and Game Tours
click on offer.
IRRESISTIBLE!
The cruise Alaskans choose

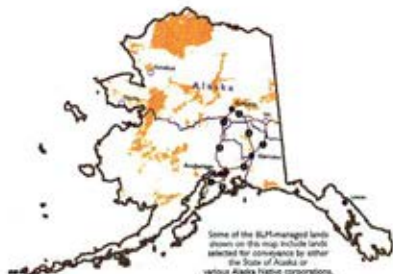
Get the Deal!
\$199 for a comprehensive



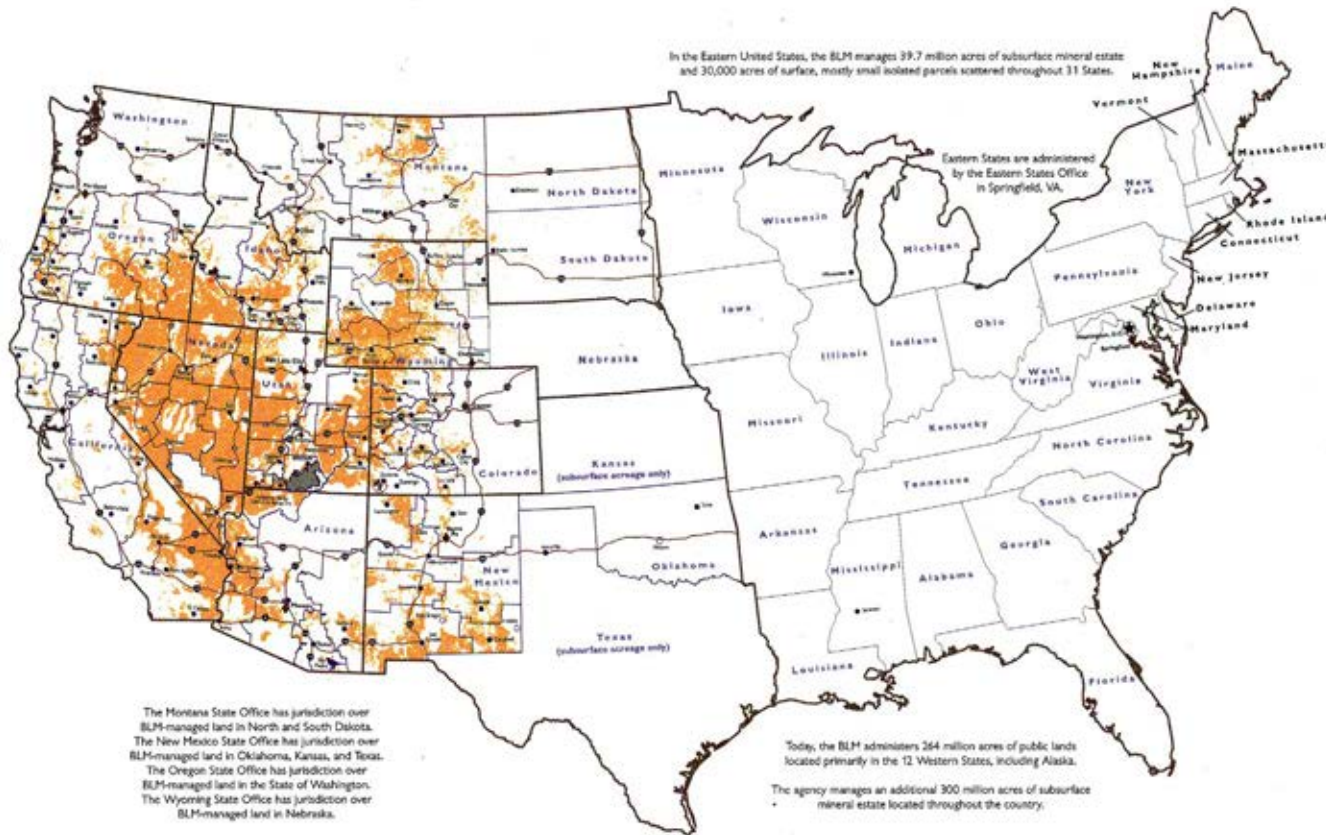
YOU ARE HERE!



Public Lands Managed by the Bureau of Land Management (BLM)



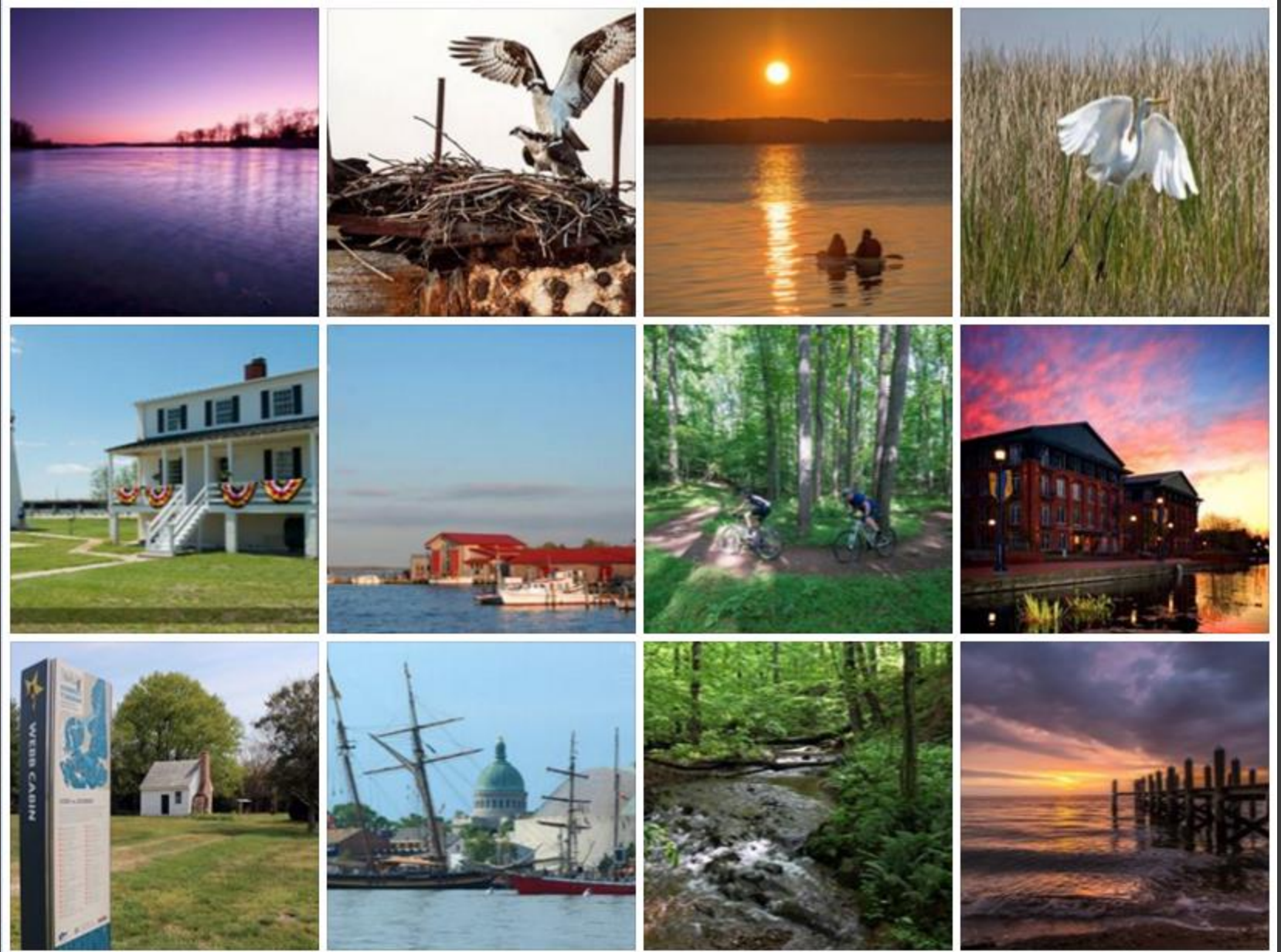
- BLM-Managed Lands
- BLM Headquarters
- BLM State Office Locations
- BLM Field Office Locations
- BLM Field Station Locations
- BLM National Training Center
- BLM National Centers
- Yagouba Head Outstanding Natural Area Interpretive Center
- National Interagency Fire Center
- National Historic Oregon Trail Interpretive Center
- Anasazi Heritage Center
- San Pedro Riparian National Conservation Area Project Office
- BLM State Office Jurisdictions
- BLM Field Office Boundaries
- State Boundaries
- Major Highways
- Grand Staircase-Escalante National Monument



Bureau of Land Management event at Douglas Point



How can you showcase the places you love?



ANTIETAM BATTLEFIELD: A CLEANUP CAMPAIGN

Margaret De Arcangelis
Preservation Maryland



PRESERVATION MARYLAND

GETTING BACK TO BASICS

Margaret De Arcangelis
Preservation Services Director





YOUR WEEKEND OF SILENT CONTEMPLATION PAGE 104

MARCH/APRIL 2008 \$4.95

Maryland life

AMERICA IN MINIATURE

SAVE 10 the HORSES!

ENDANGERED MARYLAND SITES THAT NEED YOUR HELP

COMMAND PERFORMANCE
2 GUYS, 5 YEARS, AND
1 HISTORIC LANDMARK

FUN IN THE MUD
HEADING WEST FOR SOME
SLOPPY QUALITY FAMILY TIME

A CAROUSEL CLOSE-UP AT TRIMPER RIDES, OCEAN CITY.
PHOTO BY EDWARD HENNING

www.marylandlife.com





SIX

PRESMD.ORG

2

[#PRESERVEMD](https://twitter.com/PRESERVEMD)

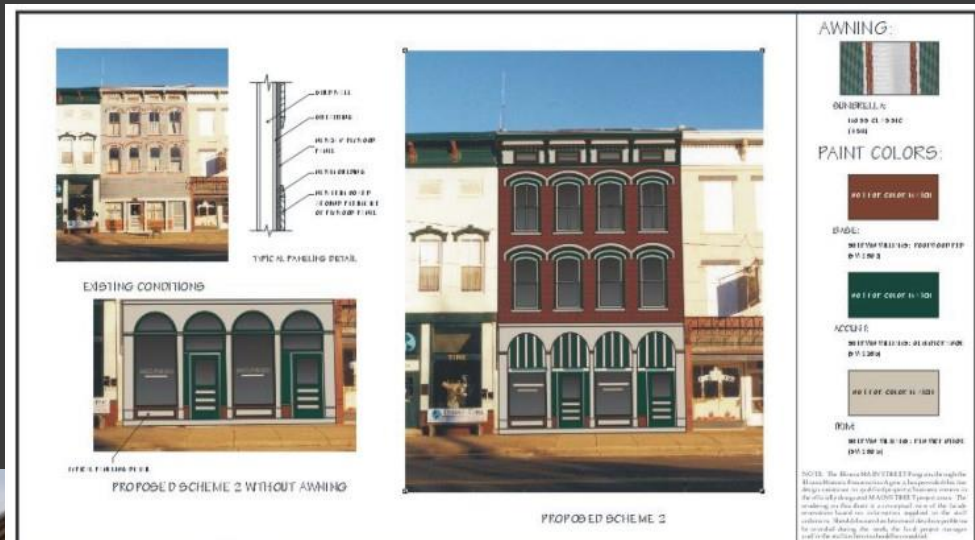
FIX





PLEASANT
VIEW

BALTIMORE STORE FRONTS





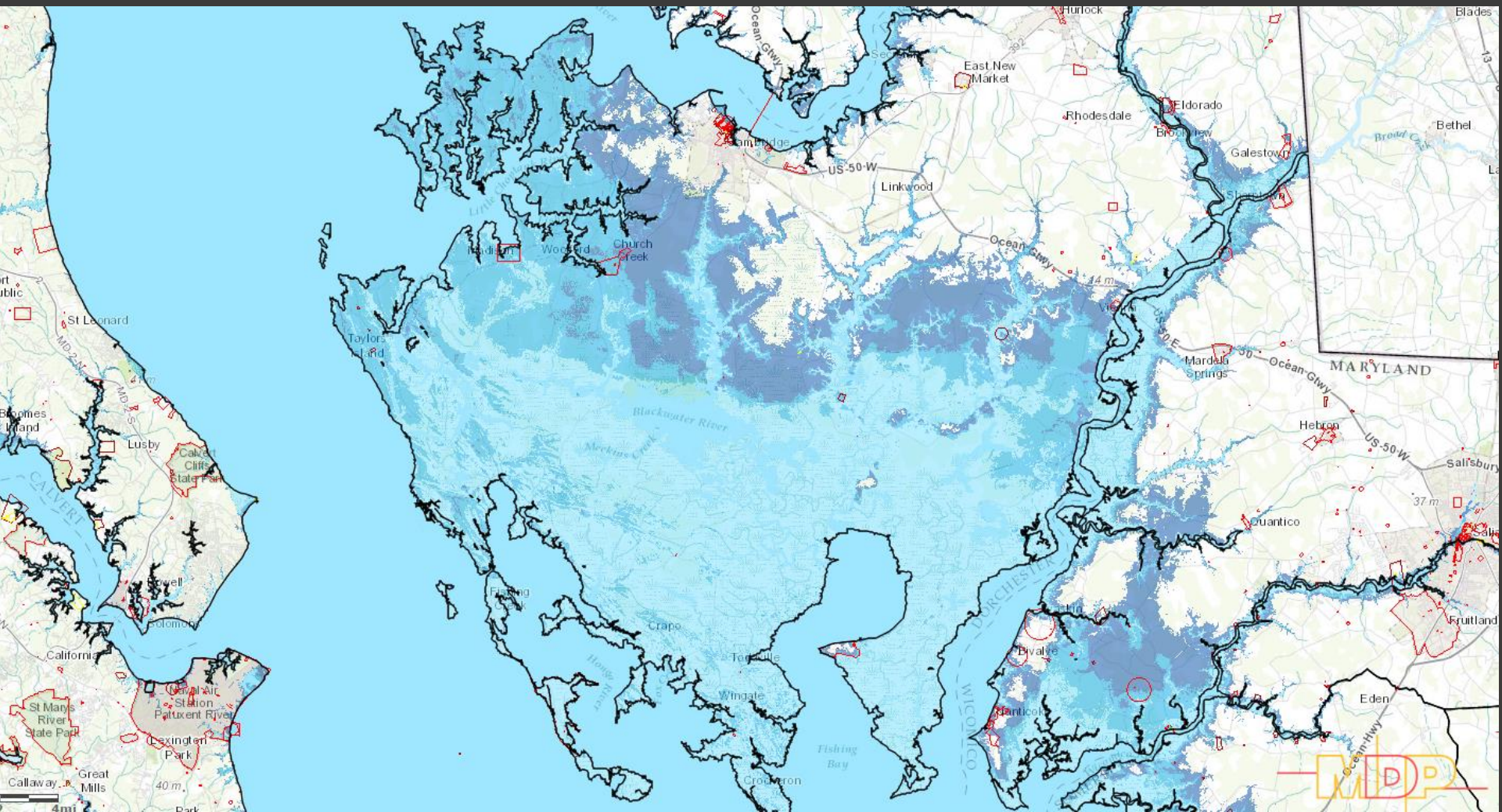
HOLLY HALL



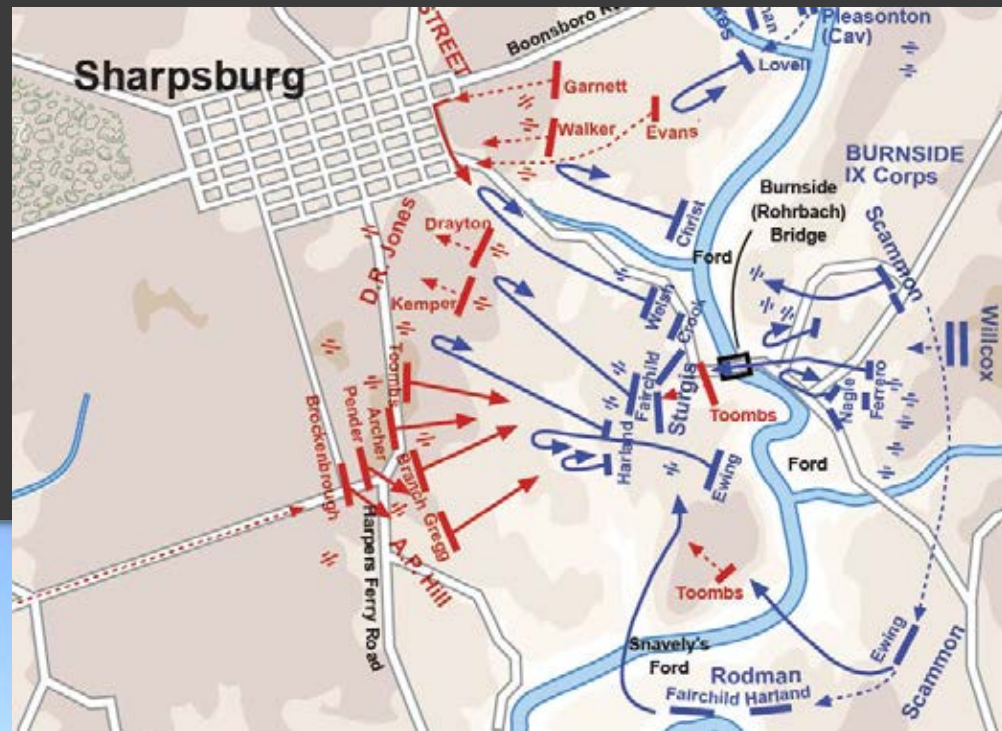
GLENN DALE



DORCHESTER
COUNTY



ANTIETAM BATTLEFIELD











PARTNERS:





PRESERVATION MARYLAND

MARGARET DE ARCANGELIS

410-685-2886

MDEARC@PRESMD.ORG

INNOVATION AND PARTNERSHIP IN
LAND CONSERVATION:

AUDIENCE AND PANEL DISCUSSION

2016 Maryland Land
Conservation Conference