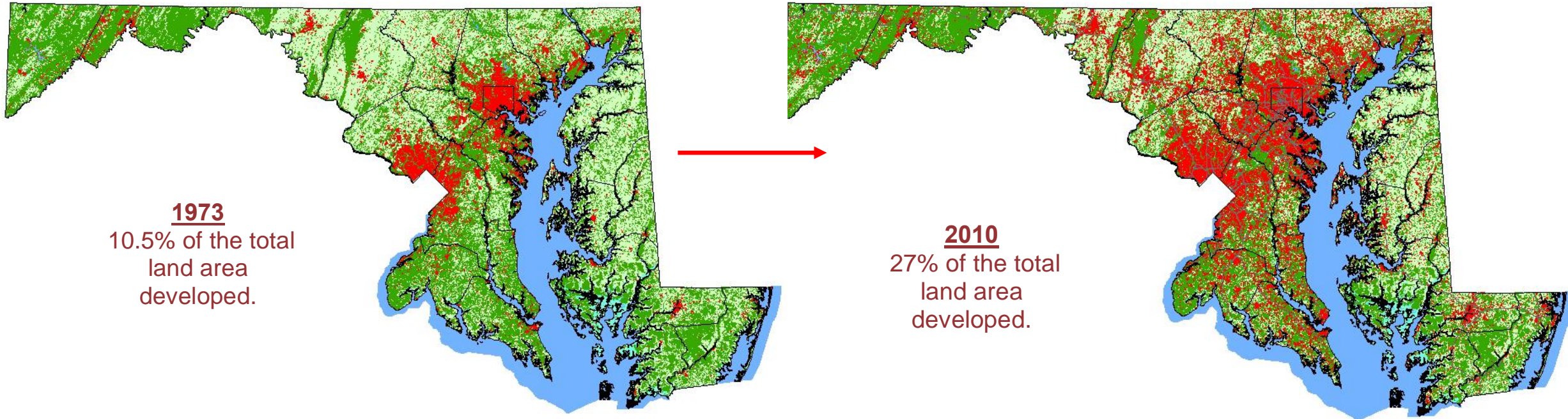


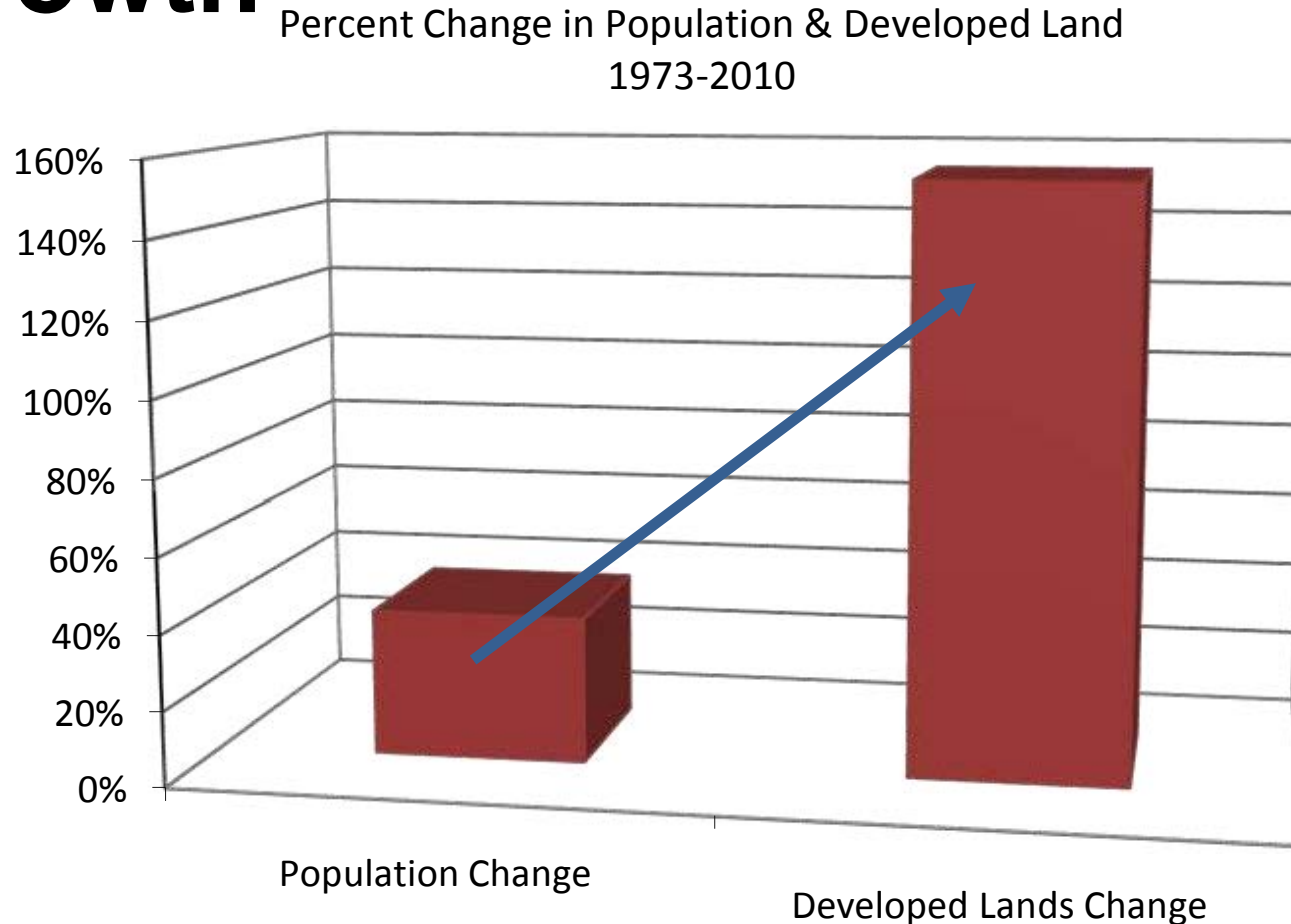
Land development in Maryland, 1973-2010



By 2010, more than 1.6 million acres developed in Maryland; up from 654,000 acres in 1973.

Source: *A Summary of Land Use Trends in Maryland: The Maryland Department of Planning 2010 Land Use/Land Cover product*

The Maryland protection challenge: Land consumption at 3x population growth



Number of developed acres per person has increased by over 80% since 1973, mainly due to large lot development.

Much development still occurring outside state Priority Funding Areas.

Source: *A Summary of Land Use Trends in Maryland: The Maryland Department of Planning 2010 Land Use/Land Cover product*

Maryland land use: past, present, future

- An average of 27,630 acres of MD agriculture and forest lands lost each year from 1973 to 2010, primarily to development (MDP 2010).
- MDP projects state's population will grow by 1 million in 2010-2030.
- In 2010, MDP projected loss of approximately 560,000 acres to development by 2030 (equal to area of Anne Arundel and Prince George's Counties combined). Amounts to around 28,000 ac/year.
- Maryland has 2,468,202 acres of forest land, with 1,869,000 ac or 76% owned and divided among 157,000 non-industrial private forest owners (USFS & DNR 2016). Conservation easements good tool for private landowners to retain and protect their forests from development.
- In FY17, MD will spend 2% of state budget on environment and natural resources, a 17% increase from FY16 – totaling \$931 million.

Status of Local Land Trusts in Maryland

Late 2014 MET Survey, 24 Local Land Trust (LLT) Respondents:

- 40% of LLTs are “all-volunteer” land trusts, no paid staff.
- 60% of LLTs have an operating budget < \$100,000/year.
- 70% of LLTs report they lack the capacity (*e.g.* personnel, training, financial resources, organizational infrastructure, community support) to achieve their land protection objectives.
- Attracting board members and engaging community members were identified as some of the top challenges to achieving LLT mission and goals.
- Technical support, training, and capacity building in stewardship and land protection are also LLT needs.

Increasing expectations and changing paradigm for land trusts: Chesapeake Bay Funders network report

“In the past, success was measured by the number of acres protected but today, acres protected is no longer sufficient. Land trust leaders are defining success more broadly. **Success has as much to do with strengthening communities and meeting a broad suite of needs, including water quality, as it does with permanent land conservation.** To that end, land trusts are pursuing new strategies for conservation, specifically, building diverse partnerships, leading town revitalization projects, developing new scientific expertise to be more strategic and effective, providing technical assistance in land management and exploring ways to use their work to connect urban and rural communities.” – ***Chesapeake Bay Watershed Land Trust Assessment: Accelerating Land Conservation to Protect and Improve Water Quality*** (November 2015 final draft report)

The Conservation Spectrum





Plan for the Future

The secret of change is to focus all of your energy, not on fighting the old, but on building the new.

Socrates





Millennials

Dominant Decision-Makers
Next 35 Years

Interesting Characteristics

Environment Not High Concern





Losing connection to outdoors

Our protected lands:

- not readily accessible to most
- do not provide range of desired experiences





Land Trust Culture

What might have to change?

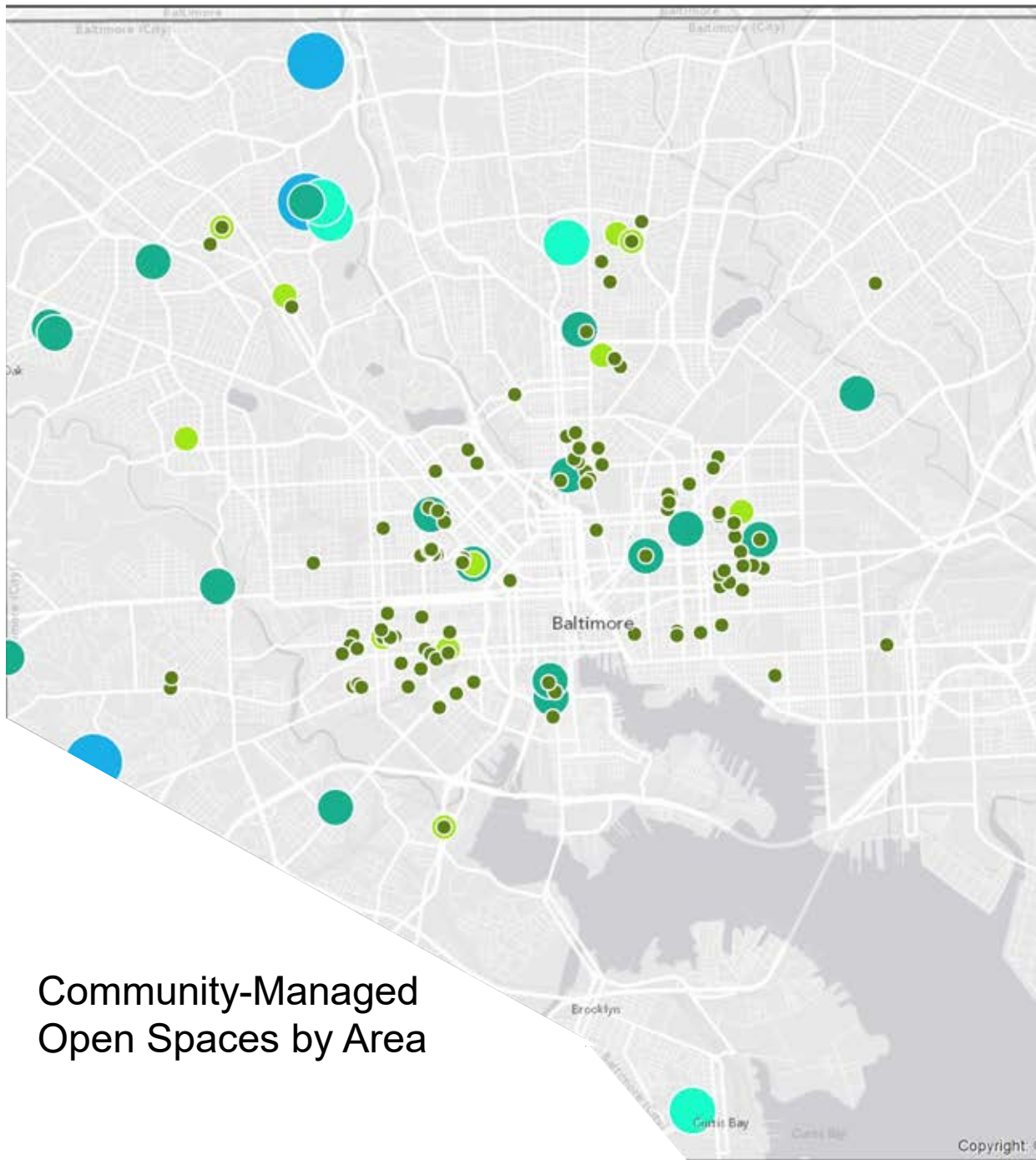




Urban conservation – people and place

Miriam Avins





Community-Managed
Open Spaces by Area

protected
since
2012





**protected since
2013**



protected since
2010

Our Model

- Site manager applies
- We make sure site meets our criteria
- We seek to acquire (usually from City)
- Long-term agreement

Preserving Community-Managed Open Spaces: Criteria and Process

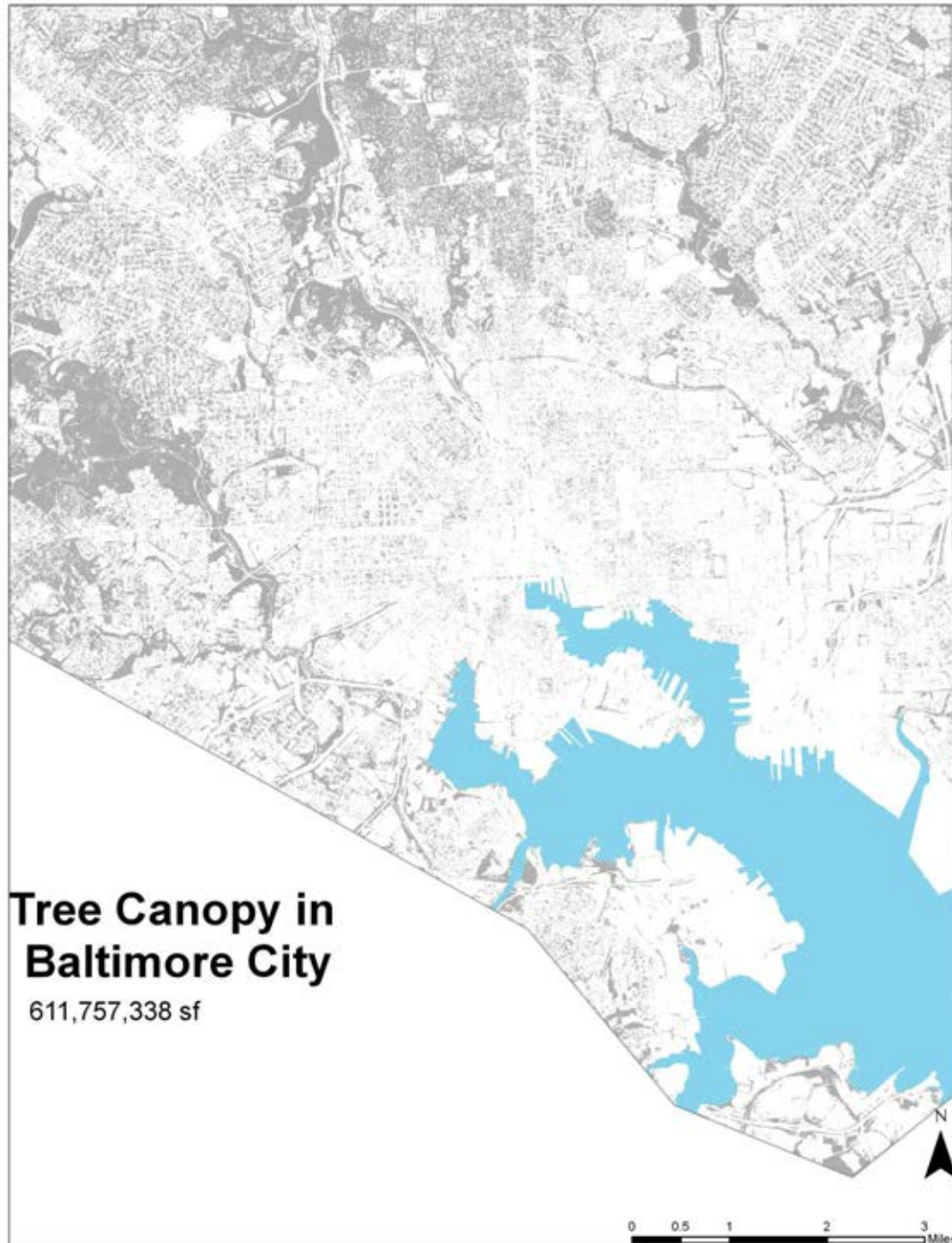


February 2010
Office of Sustainability
Department of Planning
Baltimore City
with assistance from
Baltimore Green Space



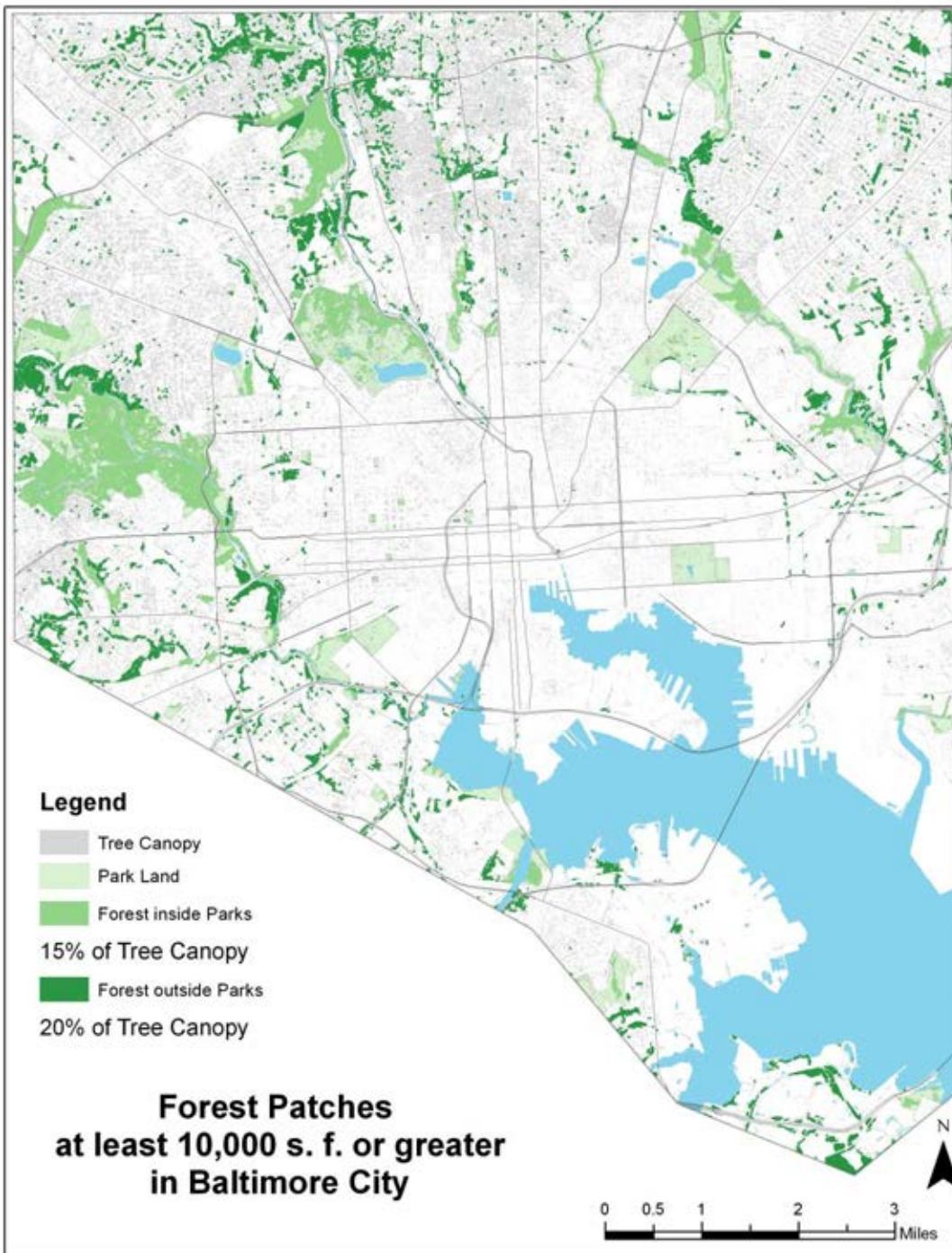
STEPHANIE
RAWLINGS-BLAKE
MAYOR

14,000 acres



**Tree Canopy in
Baltimore City**

611,757,338 sf



forest patch
outside parks

(20% of city's
tree canopy)



Point 1

In cities,
nature needs people

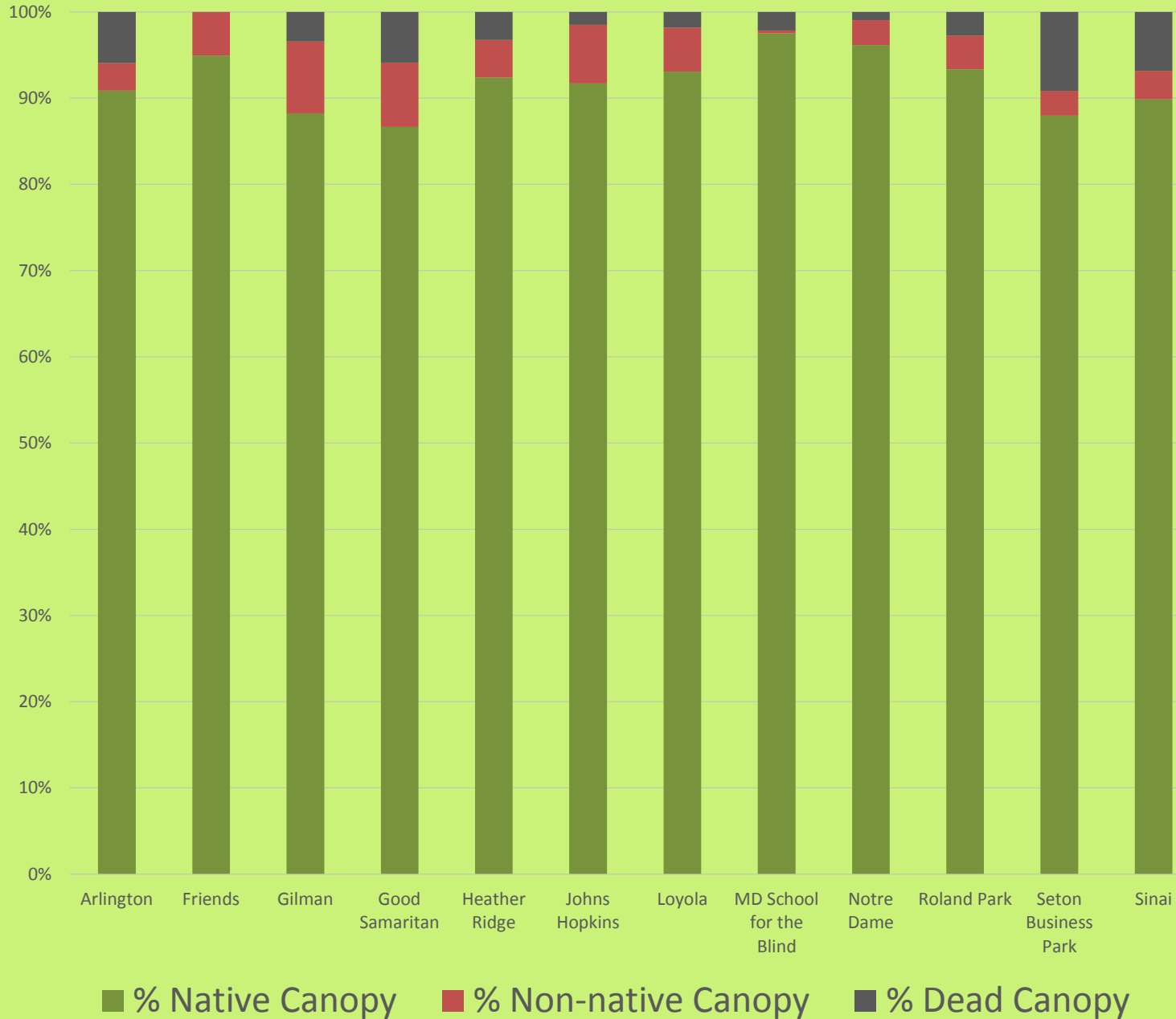








Natives, Non-natives, and Dead Trees







**protected since
2010**



**protected
since 2009**



Upper Fellis Point Garden
A list of plants and their characteristics, including names, heights, and colors.

Upper Fellis Point Garden
A list of plants and their characteristics, including names, heights, and colors.

Upper Fellis Point Garden
A list of plants and their characteristics, including names, heights, and colors.

UPPER FELLIS POINT GARDEN





Point 2

Urban green spaces
touch many people





















Point 3

Preservation helps
“rationalize”
land ownership



E 43rd St

rd St

Springfield

Springfield Woods

The Alameda

Gilrubin Ct

St Georges Ave



TNTScrubscom



Fairwood Forest

Bi-Rite



Academy Animal H

Whitehouse Manor Apartments

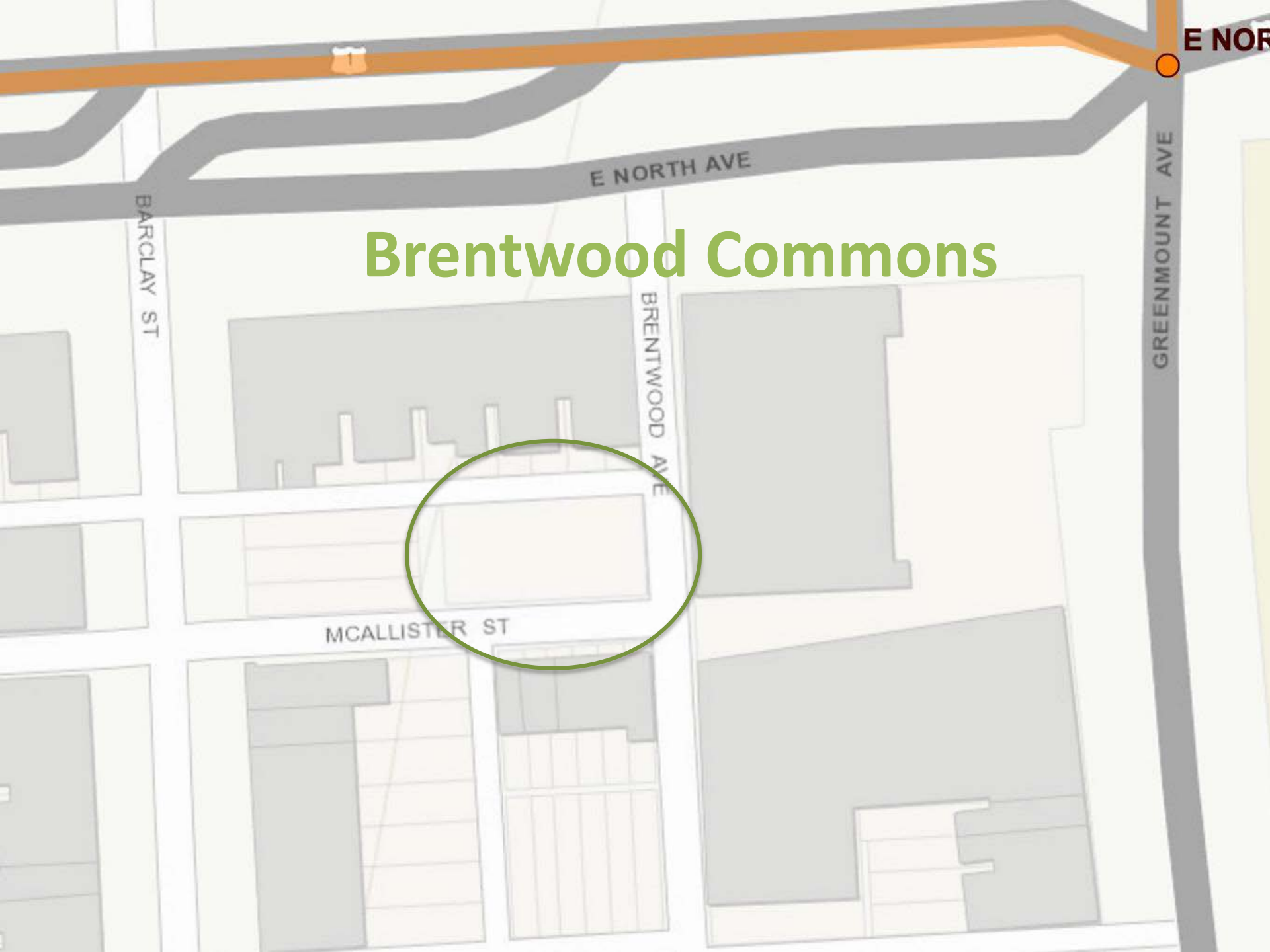


Royal Motors Inc

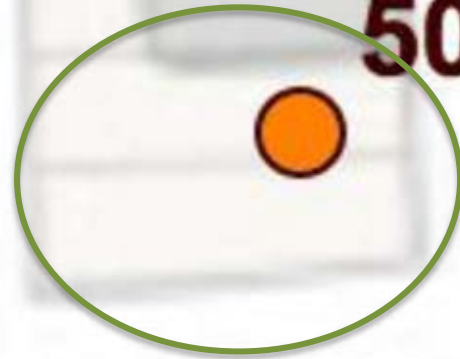


Academy Animal H

Brentwood Commons



504 N DUNCAN ST



500 N. Block Duncan Street



**Victorine Q. Adams
Organic Community Garden**



baltimore
greenspace

Thank you!

miriam@baltimoregreenspace.org
baltimoregreenspace.org