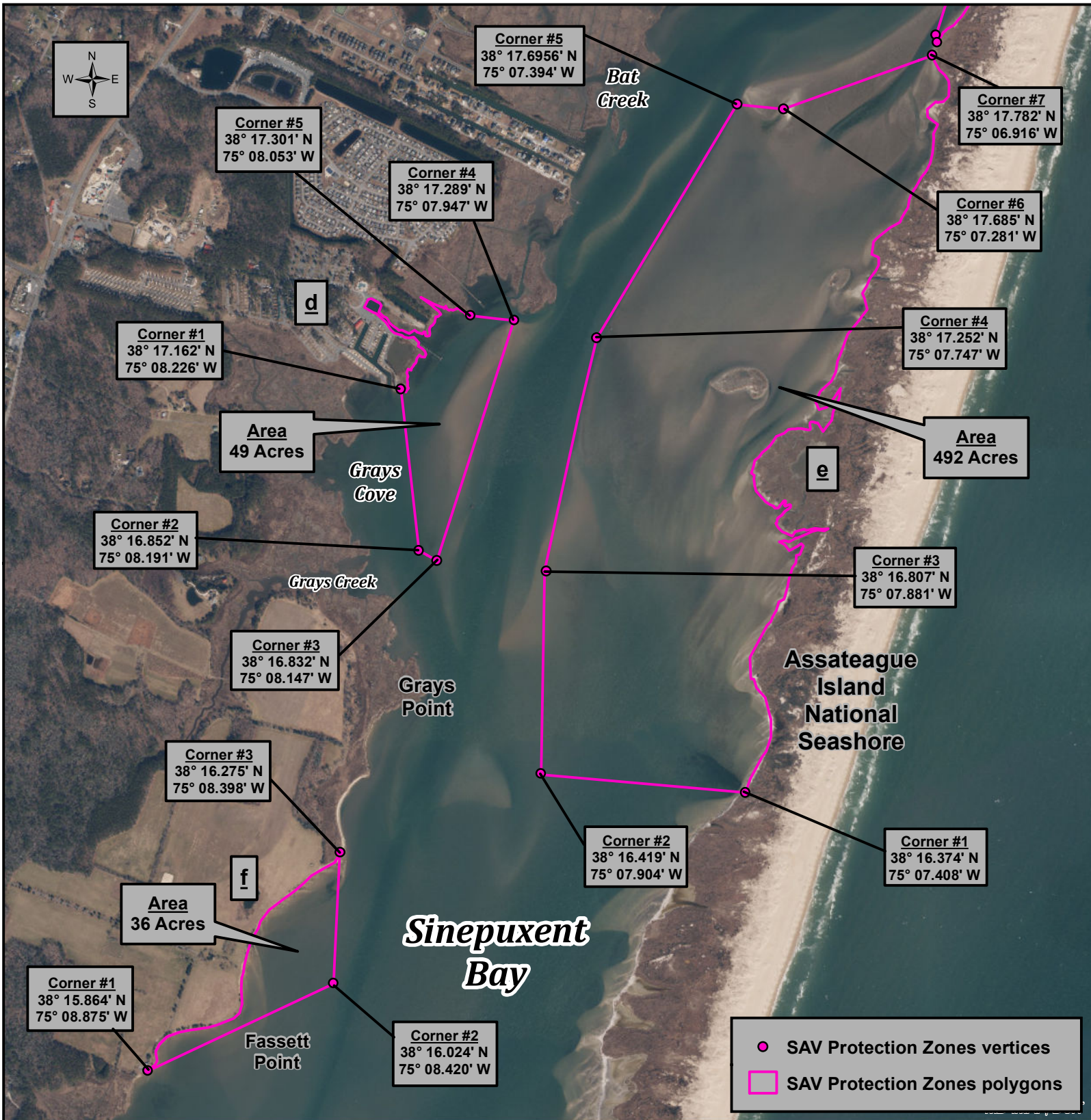


SAV Protection Zones - COMAR 08.02.01.12(5)(d,e & f)

Worcester County - upper Sinepuxent Bay



Wes Moore
Governor
Aruna Miller
Lt. Governor

Josh Kurtz
Secretary
David Goshorn
Deputy Secretary

effective December 11th, 2023

FOR INTERACTIVE MAP APPLICATION PLEASE SEE --
DNR.MARYLAND.GOV/FISHERIES/PAGES/ISHHELLFISH/MAIN.ASPX

Projection:
Lambert Conformal Conic
North American Datum 1983