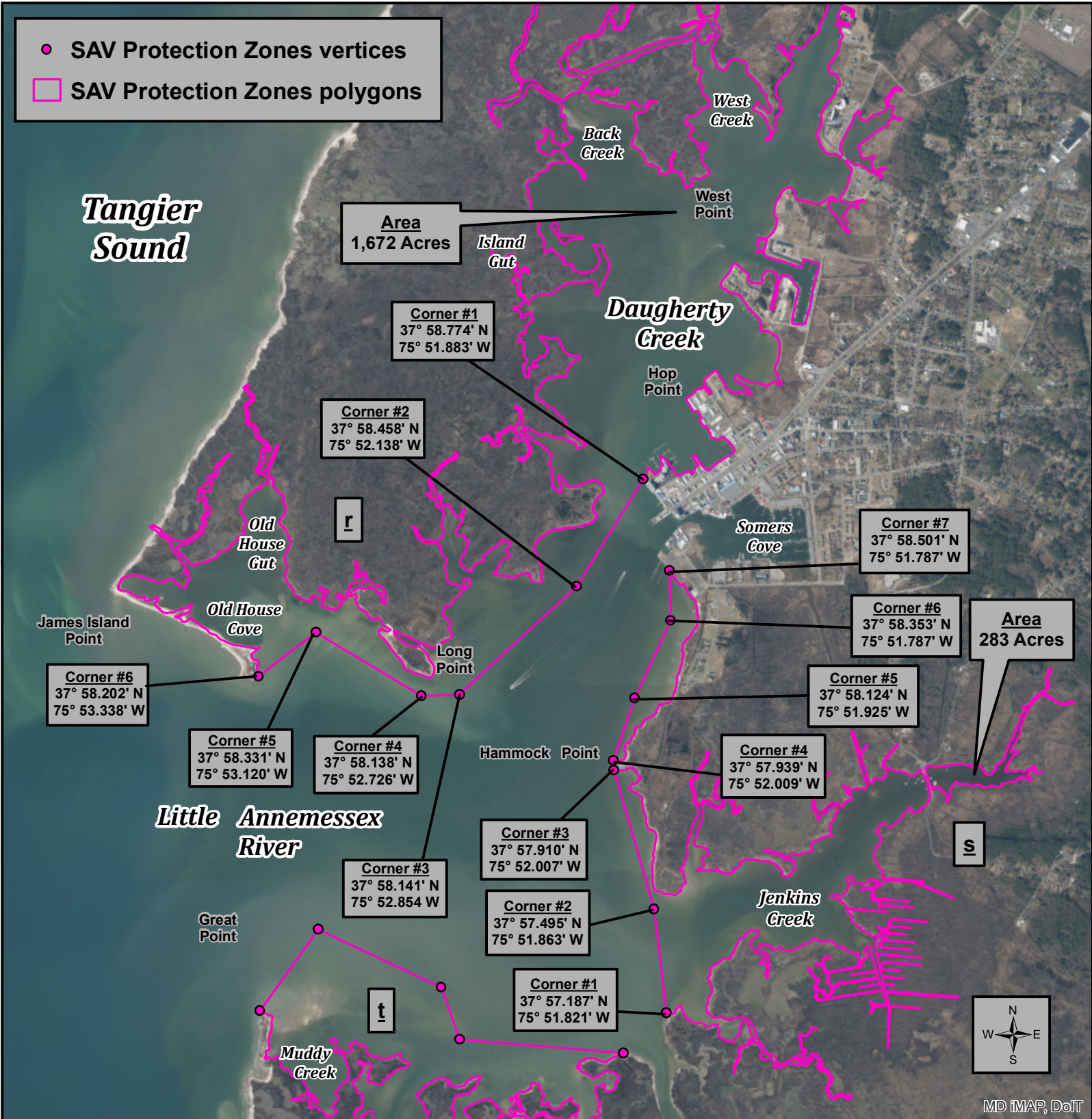


# SAV Protection Zones - COMAR 08.02.01.12(1)(1/2 r & s)

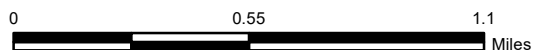
Somerset County - Little Annemessex River (Daugherty and Jenkins Creeks)



Wes Moore  
Governor  
Aruna Miller  
Lt. Governor

Josh Kurtz  
Secretary  
David Goshorn  
Deputy Secretary

effective December 11th, 2023



Projection:  
Lambert Conformal Conic  
North American Datum 1983

FOR INTERACTIVE MAP APPLICATION PLEASE SEE --  
[DNR.MARYLAND.GOV/FISHERIES/PAGES/ISHELLFISH/MAIN.ASPX](http://DNR.MARYLAND.GOV/FISHERIES/PAGES/ISHELLFISH/MAIN.ASPX)