

SUBMERGED AQUATIC VEGETATION (SAV) PROTECTION ZONES Housekeeping

What is being considered?

The Department needs to revise the Submerged Aquatic Vegetation Protection Zones in order to correct two minor mistakes which have resulted in the proper areas not being identified. In Worcester County, the wrong longitude was identified in the area near Snug Harbor and Sinepuxent Bay. In Calvert County, the longitude of one of the coordinates near Drum Point must be corrected.

Why is this change necessary?

In the drafting and adoption of the 2023 updates to the Submerged Aquatic Vegetation Protection Zones, two coordinates were misidentified. The Department discovered these errors when creating the maps of these areas. In Worcester County, the wrong longitude was identified near Snug Harbor and Sinepuxent Bay. This resulted in an area that was entirely on land instead of in the water (see figures 1 and 2 in the Appendix below). In Calvert County, the longitude of one of the coordinates near Drum Point was misidentified, leading to areas on shore and in an adjacent creek being covered by an irregular shape (see figures 3 and 4 in the Appendix below). By correcting these two coordinates, the appropriate areas will be protected.

Who will this affect?

This will affect clammers who utilize these areas.

When will this be effective?

The Department projects that this change could be effective in the fall of 2024, however the exact date cannot be determined. The Department will follow our normal proposal procedures if this concept moves forward.

What is the specific regulatory action?

Amend Regulation .12 under COMAR 08.02.01 General.

Has this change been discussed with advisory bodies?

This idea was scoped with the Sport Fisheries Advisory Commission and the Tidal Fisheries Advisory Commission at their meetings in July 2024.

Appendix: Figures for Proposed SAV Changes

	Page
Figure 1: Worcester County – Snug Harbor (Current)	9
Figure 2: Worcester County – Snug Harbor (Updated)	9
Figure 3: Calvert County – Drum Point (Current)	10
Figure 4: Calvert County – Drum Point (Updated)	10

Figure 1: Worcester County-Snug Harbor (Current)



Figure 2: Worcester County-Snug Harbor (Updated)



Figure 3: Calvert County Drum Point (Current)

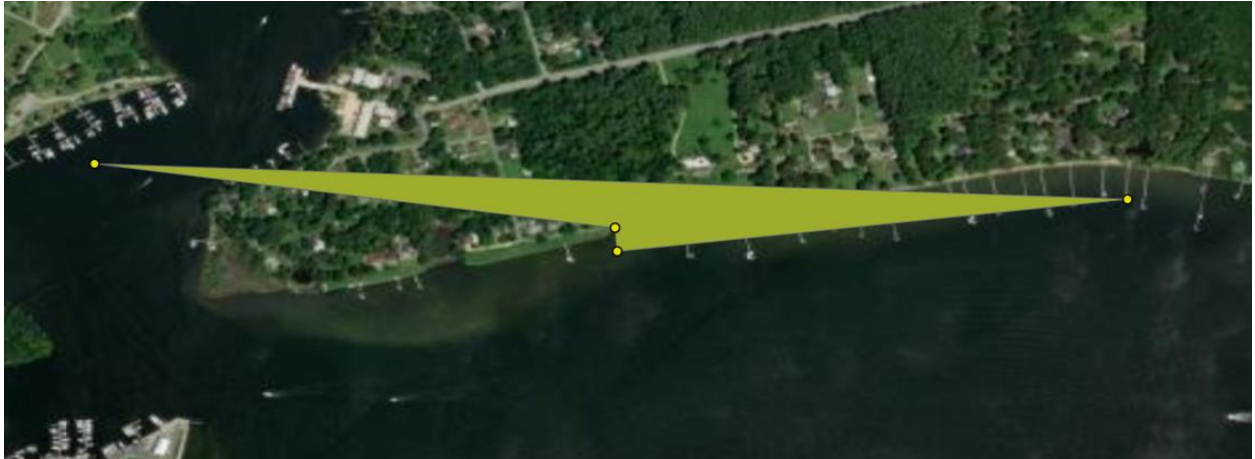


Figure 4: Calvert County Drum Point (Updated)

