

## FISHING IN NONTIDAL WATERS - Trout Management Areas in Beaver Creek

### What is being considered?

The Department is considering two modifications to trout fishing areas on Beaver Creek in Washington County.

#### *Change #1*

First, the Department is considering extending the catch-and-release artificial fly fishing section on Beaver Creek to the downstream side of the bridge at Beaver Creek Road. The current regulation sets the boundary at a red post 0.1 miles upstream from Beaver Creek Road.

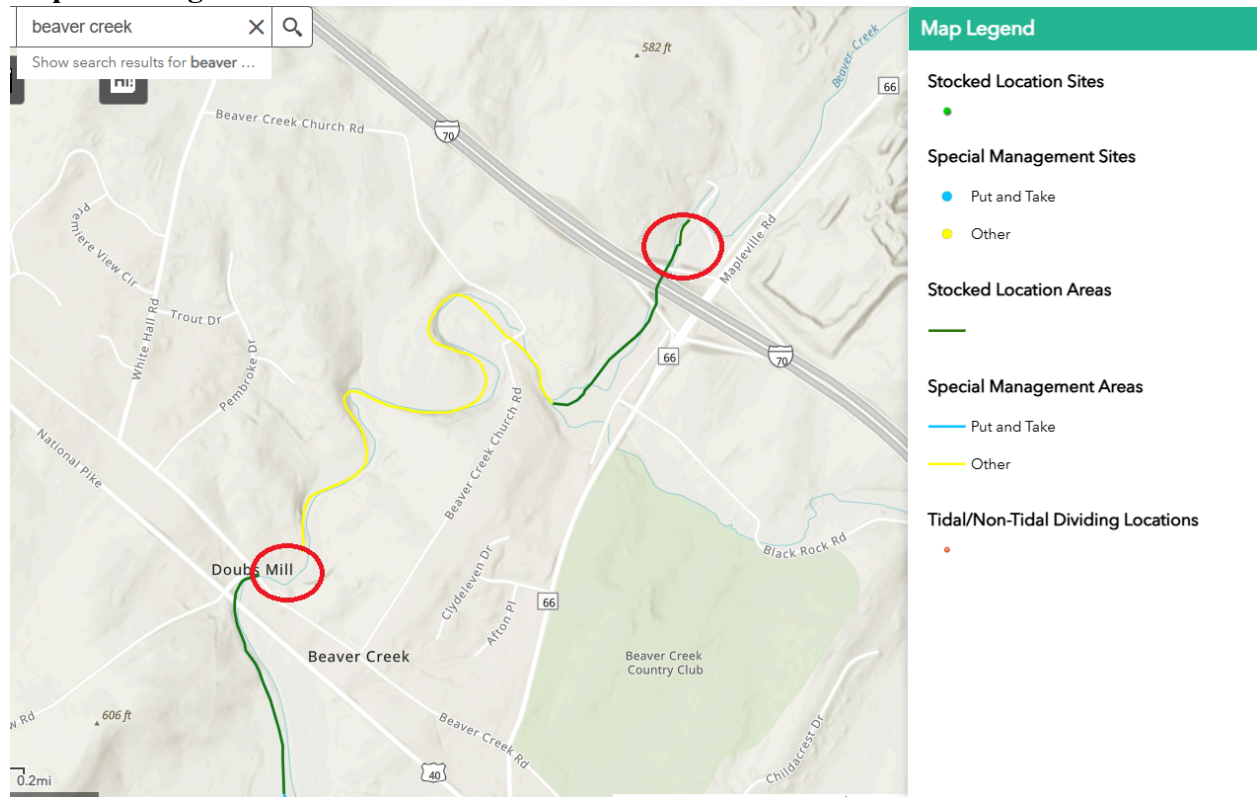
[COMAR 08.02.11.01C\(3\)](#)

#### *Change #2*

Second, the Department is considering moving the upper boundary of the put-and-take section on Beaver Creek. The current regulation sets the upper boundary as a bridge over a private farm lane located below the Albert Powell State Trout Hatchery. The boundary would be shifted downstream to the upstream side of the I-70W onramp bridge.

[COMAR 08.02.11.01B\(5\)\(i\)](#)

### Map of Changes



**Why are these changes necessary?***Change #1 Extension of the catch and release artificial fly fishing section.*

Currently, there are three sections with different rules on a small section of the creek. Having three separate management areas in such a short distance is confusing for anglers. Extending the catch-and-release artificial fly fishing section will simplify the rules in the area and hopefully reduce confusion about where and when anglers can harvest trout. The change will also protect stocked trout from being harvested during the put-and-take closure period and ensure more trout are available to anglers for opening day.

*Change #2 Moving the upper boundary of the put-and-take section.*

This is necessary because the upper boundary is currently on private property. That landowner no longer allows public access to their property. Shifting the upper boundary downstream to I-70 would adjust the put-and-take section to areas where public angler access is allowed.

**Who will this affect?**

This action will affect nontidal anglers that fish Beaver Creek in Washington County.

**When will this be effective?**

The Department projects that this change could be effective in the spring of 2026. However, the exact date cannot be determined. The Department will follow our normal proposal [procedures](#) if this concept moves forward.

**Has this change been discussed with advisory bodies or other interested individuals?**

This idea was discussed with the Sport Fisheries and Tidal Fisheries Advisory Commissions at their July 2025 meetings.

**Additional Information**

Rules for Areas Limited to Artificial Fly Fishing Only. (Applies to Change #1)

- (i) A person may not have any trout in possession while fishing in these areas. All trout which are caught shall be released and returned to the water.
- (ii) A person may fish only with artificial flies and streamers constructed in a normal fashion using natural or synthetic materials, or both, which may include feathers, fur, hair, tinsel, thread, fiber, plastic, cork, wire, and rubber, on a single hook with the components wound on or about the hook. A person may not use molded replicas of insects, earthworms, fish eggs, fish, or any invertebrate or vertebrate, either singly or in combination with the other materials, or other lures commonly described as spinners, spoons, or plugs made of metal, plastic, wood, rubber, or a similar substance or a combination of these.
- (iii) A person may fish only with conventional fly fishing tackle, including fly rods, fly reels, and fly line with a leader or monofilament line attached. Any method of angling when the fly is cast directly from the reel is prohibited. The use of centerpin, spinning, spincast, and casting reels is prohibited.
- (iv) In these areas, a person may not possess or use any natural or live bait, or any device enhanced with a scent and capable of catching fish.
- (v) The open season is January 1 through December 31, inclusive.
- (vi) A person may not fish with any barbed hook.

[Public Angler Access Map](#)