

**Public Notice**  
**Maryland Department of Natural Resources**  
**Fishing and Boating Services**  
**Application for Shellfish Aquaculture Lease – John N. Hargrove and Isaac Wilding**

The Secretary of Maryland Department of Natural Resources (DNR), pursuant to Natural Resources Article, §4-11A-09(g), Annotated Code of Maryland, is giving notice of an application for a shellfish aquaculture water column lease by John N. Hargrove and Isaac Wilding in the Harris Creek oyster sanctuary, Talbot County, Maryland, located near the headwaters of Cummings Creek northwest of the public landing and adjacent to property owned by one of the applicants. The area applied for contains 0.9 acres more or less and is enclosed by a line beginning at corner 1, at or near Lat. 38° 47' 25.3" N., Long. 76° 17' 54.1" W., then running 320° 38' (True), approximately 172 meters to corner 2, at or near Lat. 38° 47' 29.6" N., Long. 76° 17' 58.7" W., then running 78° 32' (True), approximately 16 meters to corner 3, at or near Lat. 38° 47' 29.7" N., Long. 76° 17' 58.0" W., then running 137° 11' (True), approximately 134 meters to corner 4, at or near Lat. 38° 47' 26.5" N., Long. 76° 17' 54.3" W., then running 60° 20' (True), approximately 20 meters to corner 5, at or near the mean low water line on shore, at or near Lat. 38° 47' 26.8" N., Long. 76° 17' 53.5" W., then running 167° 9' (True) along the mean low water line, approximately 26 meters to corner 6, at or near the mean low water line on shore, at or near Lat. 38° 47' 26.0" N., Long. 76° 17' 53.3" W., then running 162° 39' (True), approximately 5 meters to corner 7, at or near the mean low water line on shore, at or near Lat. 38° 47' 25.8" N., Long. 76° 17' 53.2" W., then running 115° 21' (True) along the mean low water line, approximately 13 meters to corner 8, at or near the mean low water line on shore, at or near Lat. 38° 47' 25.6" N., Long. 76° 17' 52.7" W., then running 255° 12' (True), approximately 35 meters to the point of beginning.

The applicants propose to deploy a combination of floating bags and baskets for the purpose of culturing Eastern Oyster (*Crassostrea virginica*), and to harvest using methods approved by the Department. A map of the proposed lease is attached.

The Department will hold a public informational meeting upon written request from a member of the public. In addition, any person who has a specific right, duty, privilege, or interest that is different from that held by the general public and may be adversely affected by the proposed lease may file a Petition of Protest with the Department. Petitions that meet the requirements of Natural Resources Article §4-11A-09(g) shall be forwarded to the Office of Administrative Hearings for adjudication. Comments, written requests for public informational meetings, and/or Petitions of Protest must be received by the Department of Natural Resources Aquaculture and Industry Enhancement Division 580 Taylor Avenue E-4 Annapolis, MD 21401 by March 25, 2019.

For questions about the project or the public notice please contact Rebecca Thur at the DNR Aquaculture and Industry Enhancement Division at [rebecca.thur@maryland.gov](mailto:rebecca.thur@maryland.gov) or 410-260-8252.

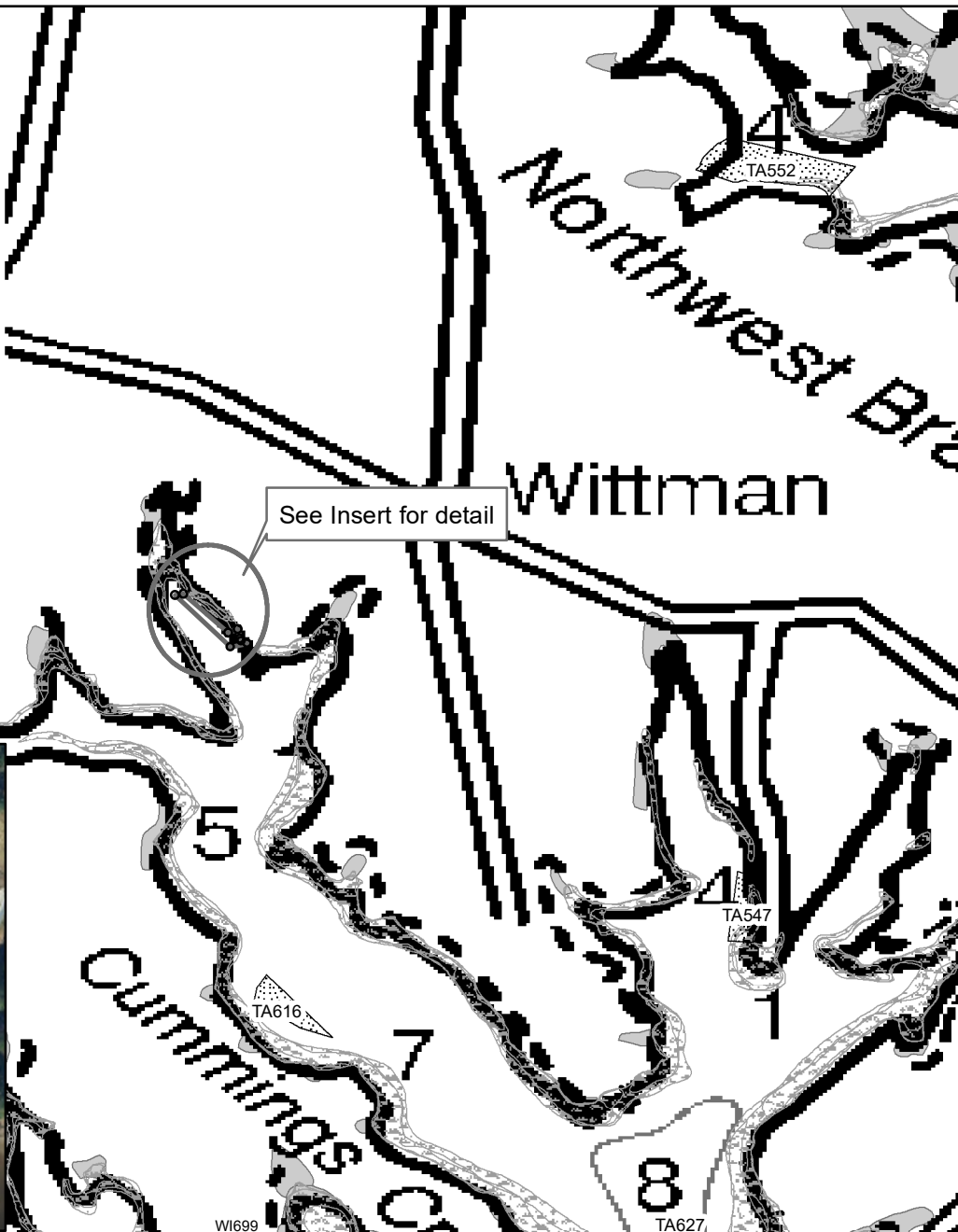
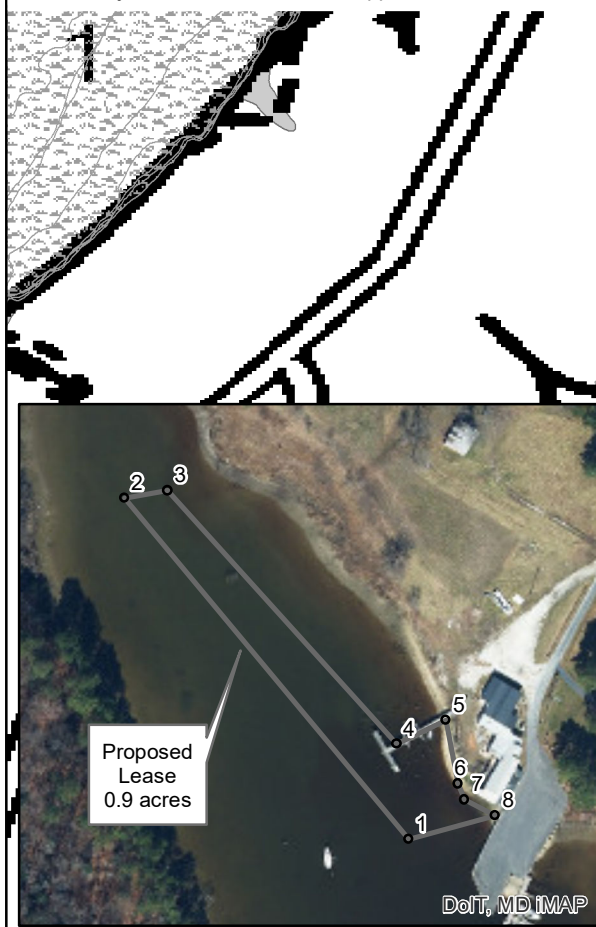
**Jeannie Haddaway-Riccio**  
**Acting Secretary**  
**Maryland Department of Natural Resources**

# Proposed Shellfish Water Column Lease NAV Chart Map

John N. Hargrove & Isaac Wilding #417 - Cummings Creek, Talbot County, Maryland

Label	Coordinates	MLLW (ft)
1	N 38° 47' 25.3", E -76° 17' 54.1"	4.3
2	N 38° 47' 29.6", E -76° 17' 58.7"	3.8
3	N 38° 47' 29.7", E -76° 17' 58.0"	3.3
4	N 38° 47' 26.5", E -76° 17' 54.3"	2.8
5	N 38° 47' 26.8", E -76° 17' 53.5"	MLW
6	N 38° 47' 26.0", E -76° 17' 53.3"	MLW
7	N 38° 47' 25.8", E -76° 17' 53.2"	MLW
8	N 38° 47' 25.6", E -76° 17' 52.7"	0.3

Corner markers will be used to mark the lease perimeter in accordance with Natural Resources Article §4-11A-10 and will be subject to U.S. Coast Guard approval.



Lease Area shown over NOAA Raster Navigational Charts.

- Proposed Lease
- Land-Based Sanctuaries and Refuges (state, federal, private, etc)
- Submerged Aquatic Vegetation (VIMS)
- Structures (Piers, Marinas, etc)
- Wetlands of Special State Concern (MD-DNR)
- Active Shellfish Lease
- Proposed Shellfish Lease
- Tidal Wetlands (NWI Wetlands) (excludes E1 type)



Larry Hogan  
Governor  
Boyd K. Rutherford  
Lt. Governor  
Mark J. Belton  
Secretary



Maryland Department of Natural Resources  
Center for Geospatial Products and Services  
580 Taylor Ave. E-2 Annapolis, MD 21401  
410-260-8985 or 1-877-620-8DNR x8985  
dnr.maryland.gov  
DNR September 2018

