

# Know your Fishing Regulations

## NORTHERN SNAKEHEAD



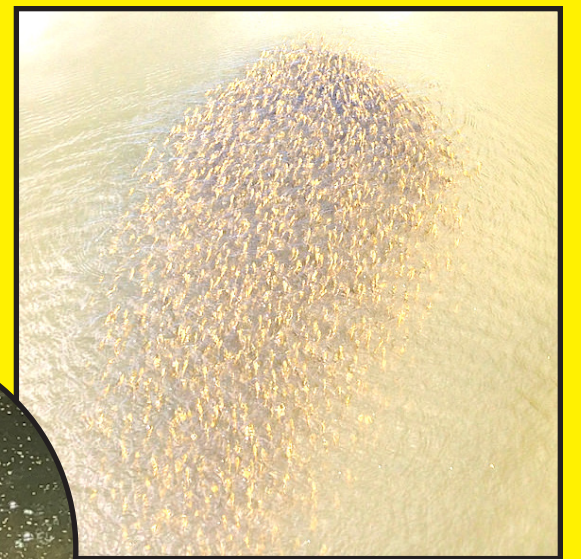
### Want to keep snakeheads?

- Immediately kill your fish
- **NO Size Limits**  
(keep whatever sizes you want)
- **NO Creel Limit**  
(keep as many as you want)
- **NO Seasonal Limit**  
(fish whenever you want)

### Don't want to keep snakeheads?

- Immediately release it

**Reproduce March to December, both parents protect their young offspring schooled in balls.**



**Long, cylindrical fish, dark blotches on tan body, long back fin, round "arm" fins**



**Predators that eat fish, frogs, insects, crayfish, and small rodents that fall in the water.**



Questions about snakeheads?  
Email: [customer.service@maryland.gov](mailto:customer.service@maryland.gov)

Scan the QR Code to the right to learn more  
or visit [dnr.maryland.gov/fisheries/pages/snakehead.aspx](http://dnr.maryland.gov/fisheries/pages/snakehead.aspx)

