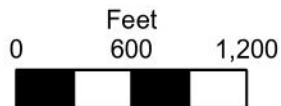
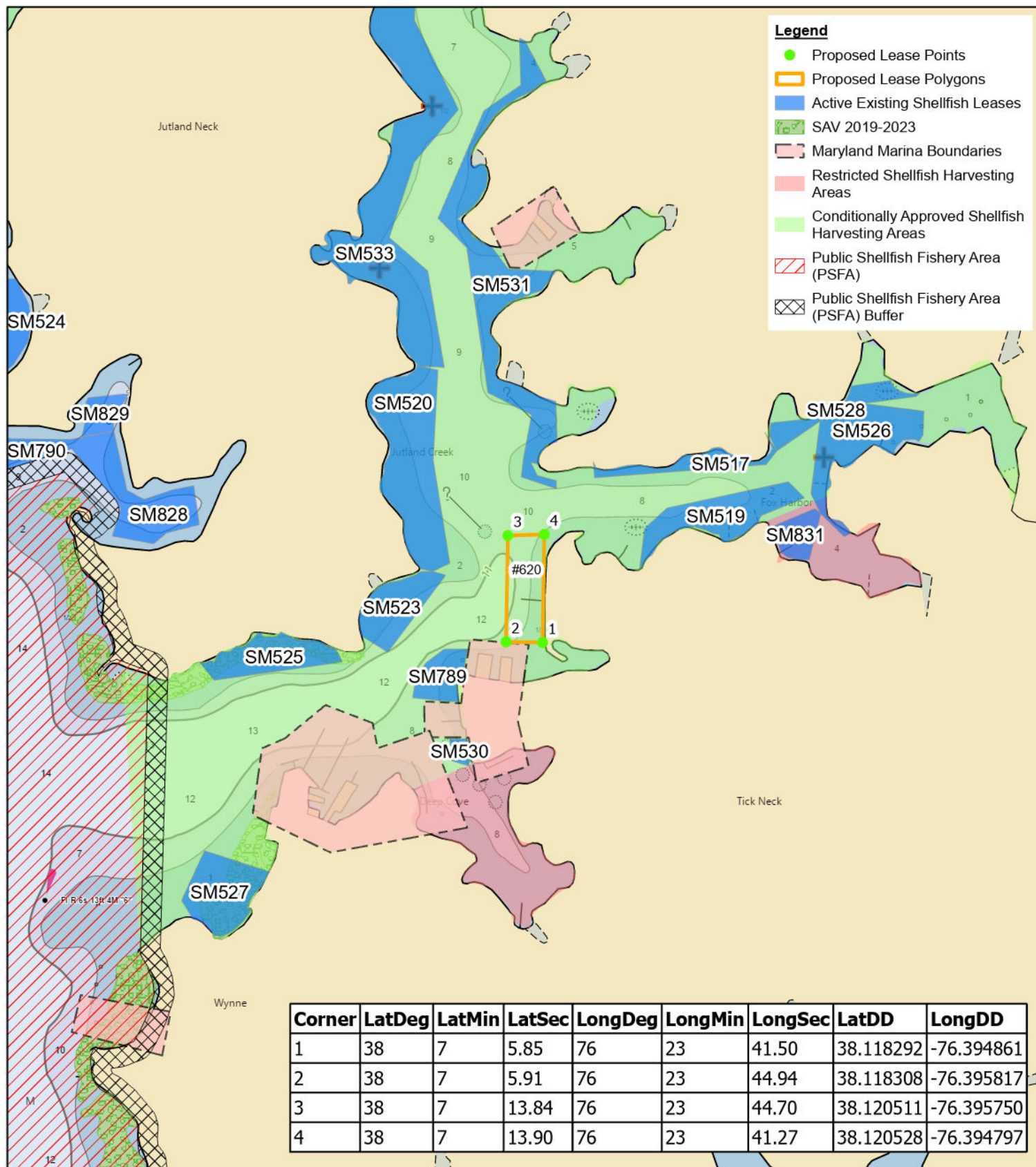


Proposed Shellfish Submerged Land Lease Dean and Dean #620 Smith Creek, St. Mary's County, MD



Aquaculture & Industry Enhancement Division
Map Created 4/21/2026
(1:12,000 scale)



Legend

- Proposed Lease Points
- Proposed Lease Polygons
- Active Existing Shellfish Leases
- SAV 2019-2023
- Maryland Marina Boundaries
- Restricted Shellfish Harvesting Areas
- Conditionally Approved Shellfish Harvesting Areas
- Public Shellfish Fishery Area (PSFA)
- Public Shellfish Fishery Area (PSFA) Buffer

Corner	LatDeg	LatMin	LatSec	LongDeg	LongMin	LongSec	LatDD	LongDD
1	38	7	5.85	76	23	41.50	38.118292	-76.394861
2	38	7	5.91	76	23	44.94	38.118308	-76.395817
3	38	7	13.84	76	23	44.70	38.120511	-76.395750
4	38	7	13.90	76	23	41.27	38.120528	-76.394797