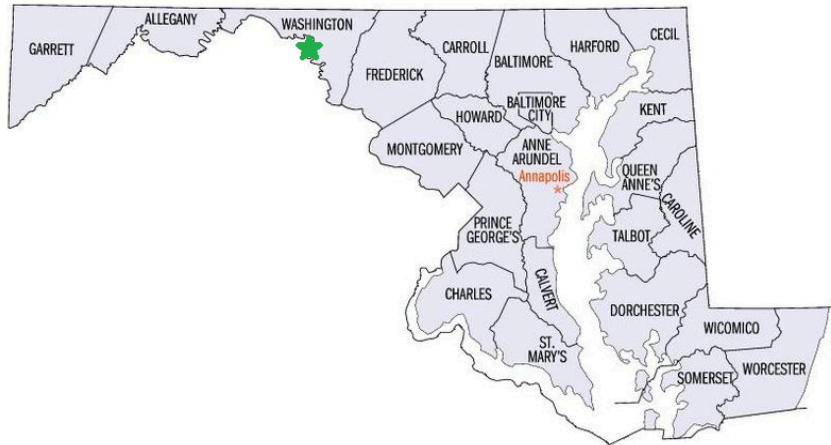


Washington County - Potomac River - Dargan Bend



What was requested?

The Department received a request to extend an existing speed zone in the Potomac River near the Dargan Bend boat ramp. The request was to extend the minimum wake speed zone approximately ½ mile in each direction from the current minimum wake speed zone. The speed limit would be effective during the boating season.

Why was this change requested?

The Department was provided the following information:

- The requester would like to increase the size of the regulated area to decrease boating speeds and protect children, residents, and visitors.
- There is an increasing number of docks being installed in the area so there is a need for proper navigation and safety measures.
- Swimmers could be at higher risk from personal watercraft use in the area.

What is the current regulation for the area?

- 1) The requested area is within a speed zone for the Upper Potomac River Dam Number 3 area described in COMAR 08.18.21.02D. Dam Number 3 encompasses the area starting at Dam Number 3, at or near Lat. 39° 20.225'N., Long. 77° 45.038' W., then running 208° (True) to a point, at or near Lat. 39° 20.127'N., Long. 77° 45.107' W., then running 155° (True) to a point, at or near Lat. 39° 19.957'N., Long. 77° 45.007' W., and extending upriver to a line beginning at a point, at or near Lat. 39° 22.717'N., Long. 77° 45.017' W., then running 247° (True) to a point, at or near Lat. 39° 22.667'N., Long. 77° 45.167' W. This area has a 35-knot speed limit on Saturdays, Sundays, and State holidays, all year.
- 2) The request is to expand the Dargan Bend minimum wake zone that lies within the larger area described above. The Dargan Bend area is described in COMAR 08.18.21.02G. The Dargan Bend boat launch area encompasses the area beginning at a point 200 yards upriver of the launch ramp, at or near Lat. 39° 21.925' N., Long. 77° 44.500' W., then running 260° (True) to a point on the opposite side of the river,

at or near Lat. 39° 21.907 'N., Long. 77° 44.635' W., and extending 100 yards downriver of the launch ramp to a point, at or near Lat. 39° 21.785' N., Long. 77° 44.432' W., then running 261° (True) to a point on the opposite side of the river, at or near Lat. 39° 21.763' N., Long. 77° 44.600' W. This area is designated a minimum wake zone all year.

Definitions

“All year” means the period beginning at 12:01 a.m. each January 1, and ending at 12 midnight each succeeding December 31.

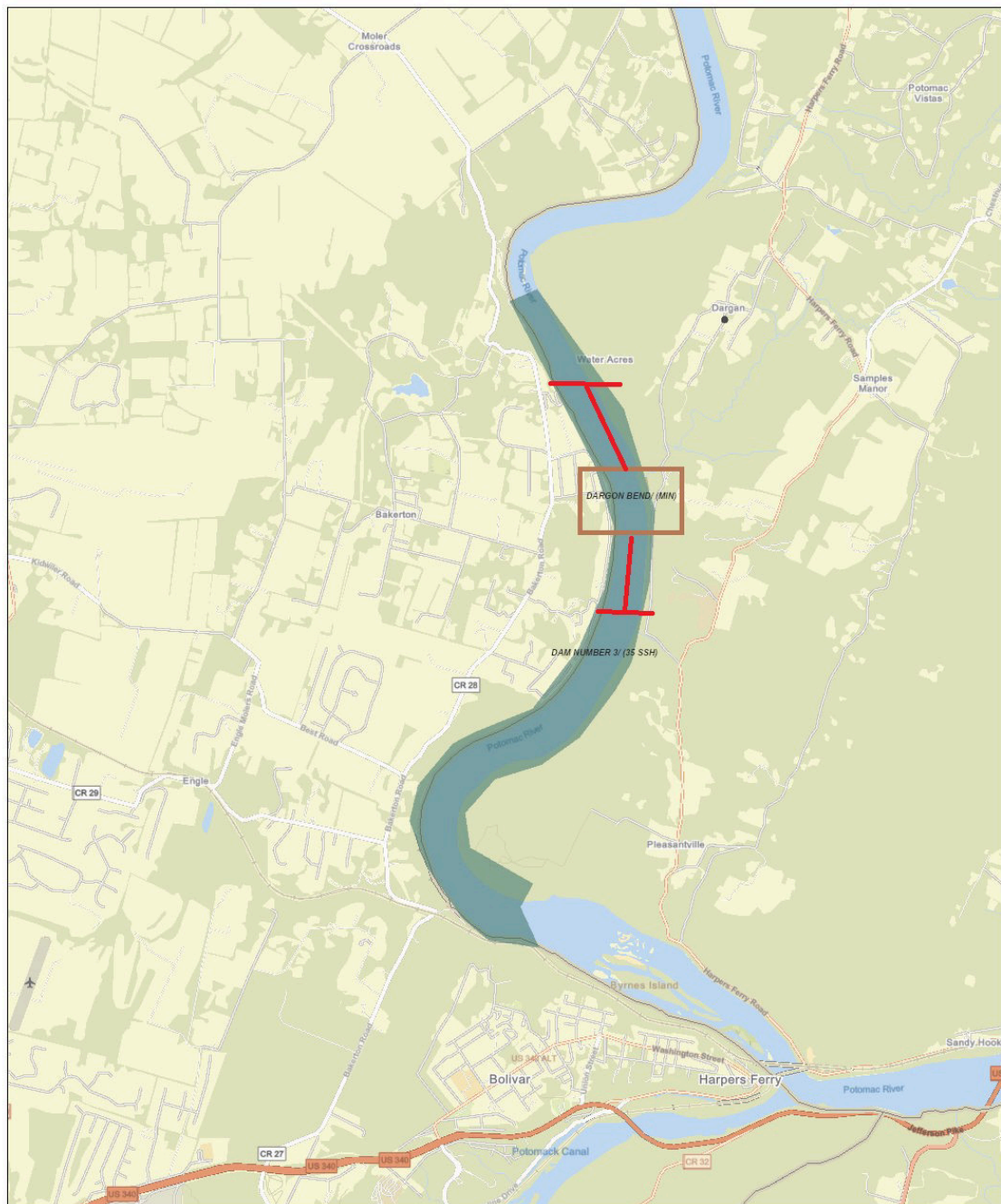
“Boating season” means the period beginning at 12:01 a.m. each April 15, and ending at 12 midnight each succeeding October 15.

“Minimum wake zone” means a person may not operate or give permission to operate a vessel in excess of the slowest possible boat speed necessary to maintain steerage under prevailing wind and sea conditions not to exceed 3 knots (3.5 statute miles per hour or 5.6 kilometers per hour).

“Saturdays, Sundays, and State holidays” means the period beginning at 12:01 a.m. each Saturday, and ending at 12 midnight each succeeding Sunday, and during the period beginning at 12:01 a.m. and ending at 12 midnight each holiday officially recognized by the State of Maryland as listed by the Maryland Department of Budget and Management. For the purposes of this subtitle, the terms “holiday” and “State holiday” are to be considered equivalent.

Map of the Area

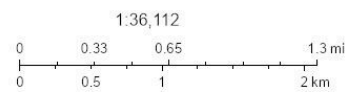
Dargan Bend



5/6/2025, 11:52:48 AM

Waterways Speed Zones

- Minimum Wake
- 35 Knots Saturdays, Sundays, Holidays



Map data © OpenStreetMap contributors, Microsoft, Facebook, Google, Esri Community Maps contributors, Map layer by Esri

Map data © OpenStreetMap contributors, Microsoft, Facebook, Inc. and its affiliates, Esri Community Maps contributors, Map layer by Esri | MD MAP, DNR MGS | Maryland DNR