

MARYLAND DEPARTMENT OF NATURAL RESOURCES

**Fishing and Boating Services
Ice Conference 2025 -2026**

**Ken Choi
Hydrographic Operations**





M/V EDDIE SOMERS / Service Area

BUILT: Blount Boats (2022)

LENGTH: 94'

WIDTH: 27'

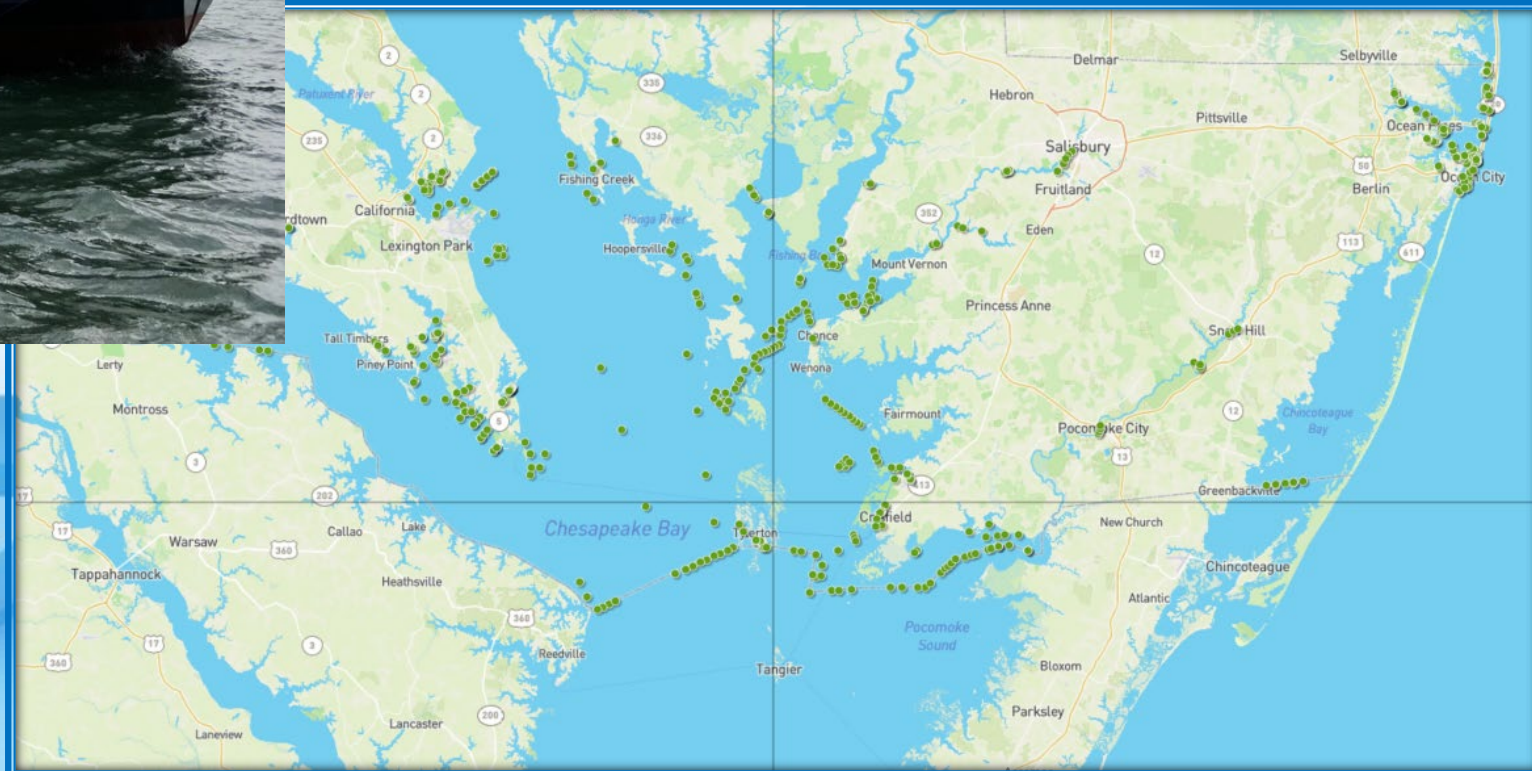
DRAFT: 5'

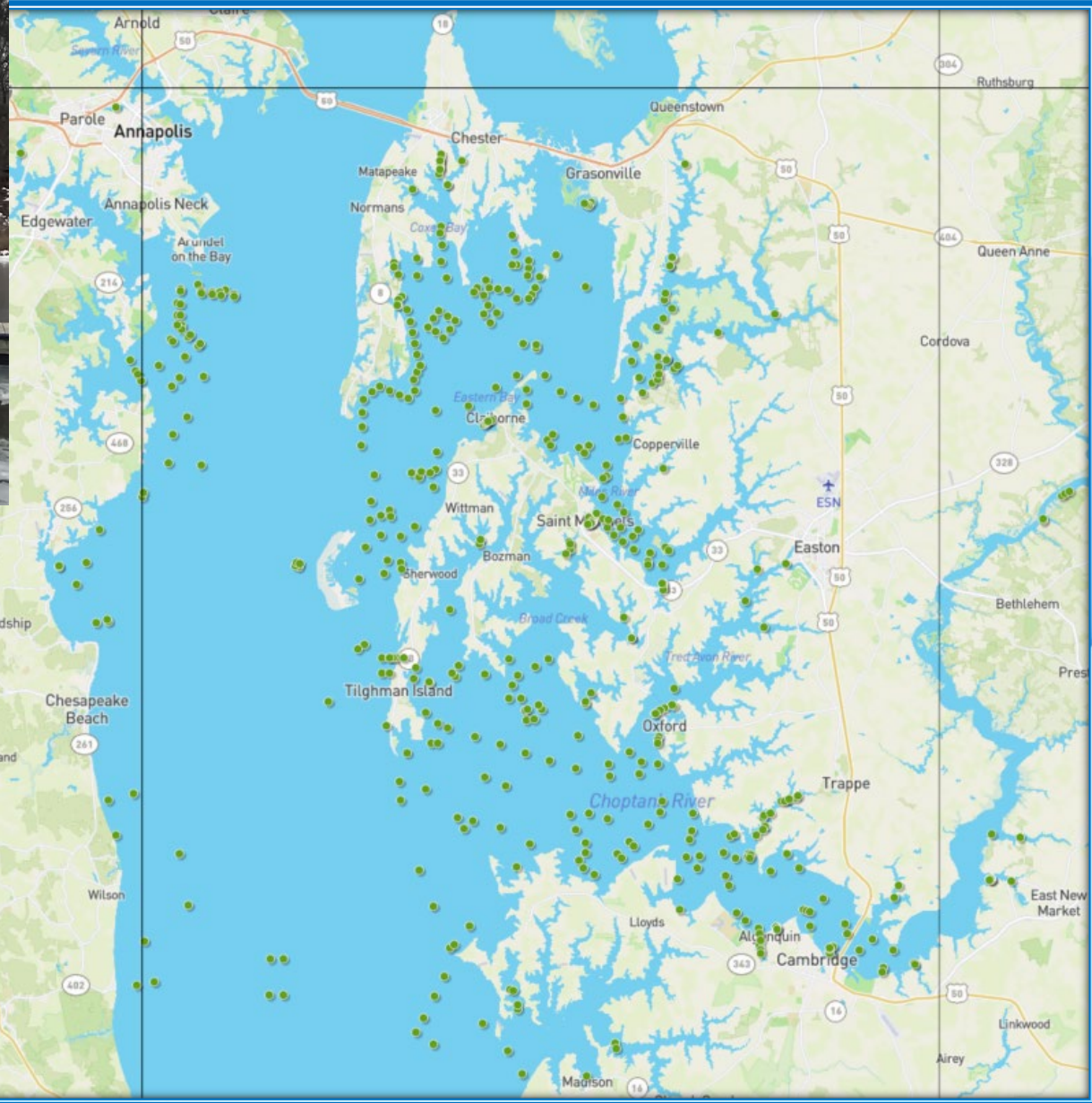
188 TON

ICE BREAKING CAPABILITIES: 18"

PROPULSION: 1,500 HP TWIN

SCRW DIESEL ENGINE





M/V JOHN C WIDENER / Service Area

BUILT: GENERAL SHIP REPAIR (1964)

LENGTH: 73'

WIDTH: 20'

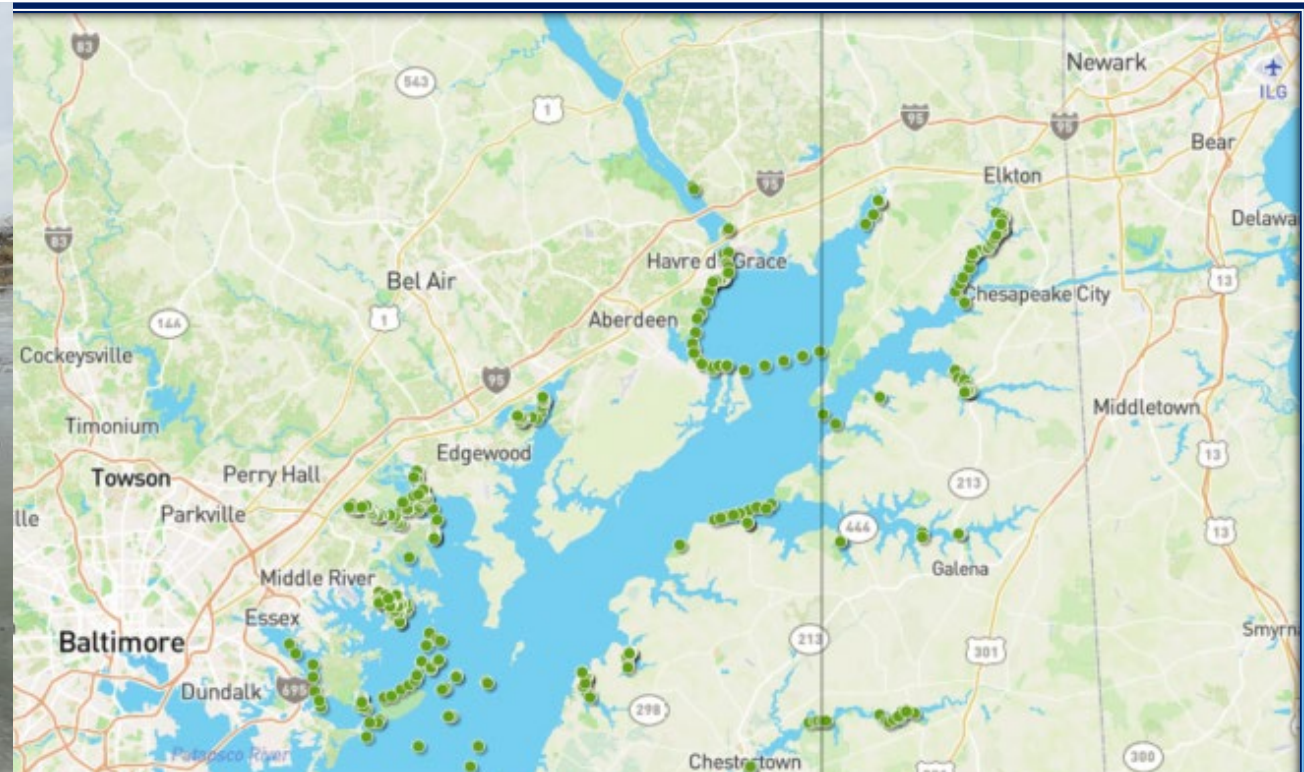
DRAFT: 5.5'

78 TON

ICE BREAKING CAPABILITIES: 8"

PROPULSION: 525 HP SINGLE SCREW

DIESEL ENGINE



M/V A. V. SANDUSKY / Service Area

BUILT: GENERAL SHIP REPAIR (1989)

LENGTH: 80'

WIDTH: 24'

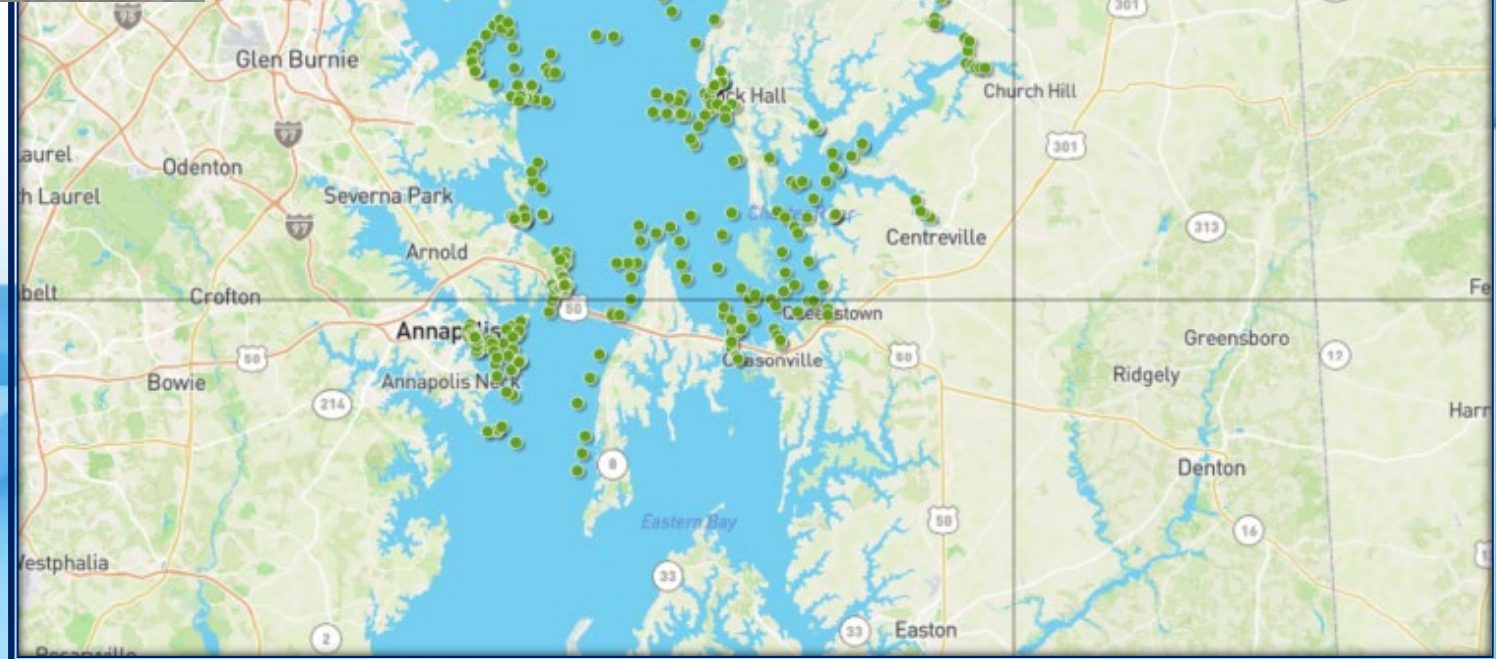
DRAFT: 4.5'

120 TON

ICE BREAKING CAPABILITIES: 8"

PROPULSION: 700 HP TWIN SCREW

DIESEL ENGINE



Abandoned Boats and Debris

