

PPRP Fact Sheet – CPV St. Charles Natural Gas, Charles County

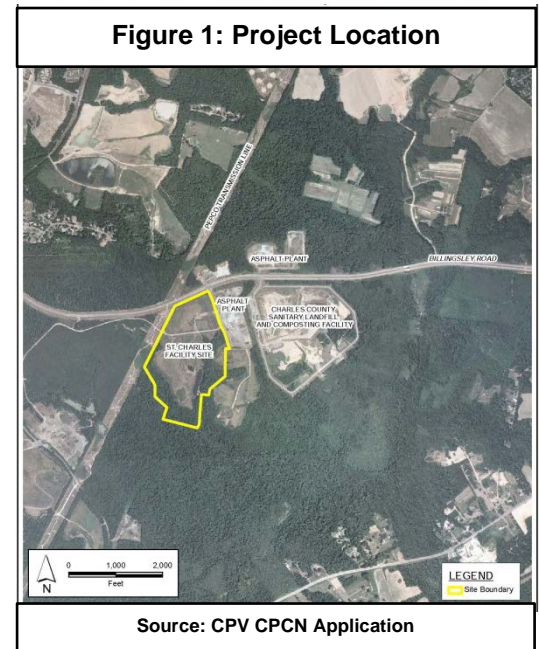
PSC Case Number 9437

Manager: Helen Stewart
Last updated 30 August 2017

Project Overview:

CPV Maryland, LLC filed for a CPCN to construct and operate a 640 MW natural gas-fired electric generating station near St. Charles, in Charles County (Figure 1). The Project occupies 76 acres within the Piney Reach Business Park. The Project began operating in 2017. Project components include:

- 2 natural gas-fired combined cycle combustion turbines each with a heat recovery steam generator equipped with low-NOx burners and selective catalytic reduction system, and a shared steam turbine generator;
- 1 natural gas-fired auxiliary boiler;
- 1 wet mechanical cooling tower with drift eliminators;
- 1 13.9-mile, 16- to 30-inch diameter reclaimed water pipeline and pump station;
- 1 1.3-mile natural gas pipeline;
- 1 1.5-mile potable water pipeline; and
- 4 transmission line structures to connect the Project to PEPCO's Morgantown-Talbert/Oakgrove Circuits.



Site Description

The Project is located at the site of the former Kelson Ridge Project (a proposed gas-fired generating station project that was granted a CPCN in Case #8843, but was not constructed). The Project will occupy 76 acres within the Piney Reach Business Park. A 51-acre portion of the Project is a former sand and gravel mine. Much of the Project site is vegetated and forested areas are located along portions of the western, southern, and eastern boundaries. A portion of Piney Branch and an unnamed tributary are located within the forested area. The surrounding areas are generally rural and undeveloped, with some commercial/industrial facilities nearby. The closest residences are approximately one-half mile to the northwest.

Impact Assessment Highlights

Air Emissions

- Anticipated emissions from the Project trigger major Prevention of Significant Deterioration (PSD) requirements for NOx, CO, particulate matter, PM10, and greenhouse gases.
- If designed and operated in accordance with licensing conditions, PPRP concludes that the facility will meet all relevant State and Federal emissions regulations.

Biological

Generating Station

- A 350 square foot area of forested wetland and buffer as well as a 15-foot segment of the unnamed tributary to Piney Branch will be disturbed to place erosion mitigation measures. The Applicant will comply with appropriate permit requirements and Best Management Practices.
- Approximately 6.6 acres of forest will be cleared. Most clearing and construction will affect previously disturbed ruderal communities. Areas to be cleared are also either isolated or peripheral and will not disrupt the continuity of the forest.
- There are no records of rare, threatened, or endangered species at the Project.

Linear Facilities

- Approximately 18.14 acres of wetlands are expected to be impacted throughout the reclaimed water and natural gas pipeline corridors (17.68 acres temporary; 0.46 acres permanent). Approximately 15.20 acres of wetland buffers will be temporarily impacted. The Applicant will comply with all permit requirements and Best Management Practices. Specialized construction techniques, such as jack and bore, directional drilling, and sand bag diversions will minimize impacts.

- Approximately 6.0 acres of forested areas will be cleared to install the linear facilities. The area to be disturbed contains only sub-optimal wildlife habitat.
- Two listed plant species were identified within linear facility areas; the Applicant will work with appropriate agencies to avoiding individuals of these species during construction. Other listed species that occur in the vicinity of the linear facilities will be protected from secondary construction impacts through the implementation of a series of protective plans and best management practices.

Economic and Fiscal Impacts

- The Project will create 175-200 temporary jobs during construction and approximately 25 permanent jobs after completion.
- Fiscal benefits to the State will be in the form of sales taxes on construction materials and services as well as income taxes on Project employees.

Transportation Impacts

- A new road (Thomas Edison Drive) will be constructed off of Billingsley Road.
- Construction traffic is expected to cause only minor congestion on Billingsley Road.
- Construction of linear facilities may cause minor and temporary disruptions (i.e. road closures).

Visual Impacts

- Construction activities will be visible along Billingsley Road. A berm will provide partial screening.
- The tallest structures of the Project will be the exhaust stack (150 feet). The cooling towers will generate a visible plume under certain weather conditions.
- Views of the facility from the northwest will be partially compromised by a PEPCO transmission line.
- PPRP recommends that the Applicant mitigate views of the Project from Billingsley Road and comply with setbacks and buffer requirements annotated in the Charles County Zoning Ordinance.

Cultural & Aesthetic

Generating Station

- There are no archaeological sites within the Project area.
- There are no structures registered on the Maryland Inventory of Historic Places within 1 mile of the site.
- One site designated "historic" by Charles County – Widow's Pleasure (CH-373) – is situated approximately one mile from the site. Construction and operation of the Project is not expected to impact this site.

Linear Facilities

- The natural gas pipeline and water and sewer lines follow the Billingsley Road right of way (ROW) and are unlikely to disturb any historic sites.
- Although there are 26 archaeological or historical sites within 1/2 mile of the reclaimed water pipeline corridor, the proposed corridor parallels an existing pipeline corridor and the Maryland Historic Trust concurs that construction is unlikely to disturb historical or archeological sites. Several portions of the pipeline will be adjacent to a railroad corridor, these areas have a higher potential for historical and archeological sites; as such, PPRP recommends a license condition that construction activities should be confined entirely within the existing railroad (ROW).

Other

- Chemicals, generated, or stored onsite will include: diesel fuel; spent degreasers; paints; lubricants; and aqueous ammonia. Project plans include appropriate measures for the management of these materials.
- The Applicant is required to take additional ambient noise measurements; if exceedances occur, additional noise mitigation measures must be included in final design and operation plans. Post-construction noise monitoring should be conducted to ensure compliance with applicable regulations.

CPCN Status

- CPCN Application filed on 12/20/16.
- Applicant Supplemental filing to its CPCN Application was filed on 2/17/17.
- The Applicant filed an addendum to its Environmental Review Document on 1/11/17, describing modifications made to the Project.
- An order suspending the Procedural Schedule was issued on 6/12/17, and a continuance of the suspension was issued on 6/21/17.
- For more current information, see: <http://www.psc.state.md.us/>.