



Maryland Forest Service

Wildland Fire Program

2020 Annual Wildland Fire Report

Contact:

Chris Robertson
State Fire Supervisor
580 Taylor Avenue, E-1
Annapolis, MD 21401
410-260-8503

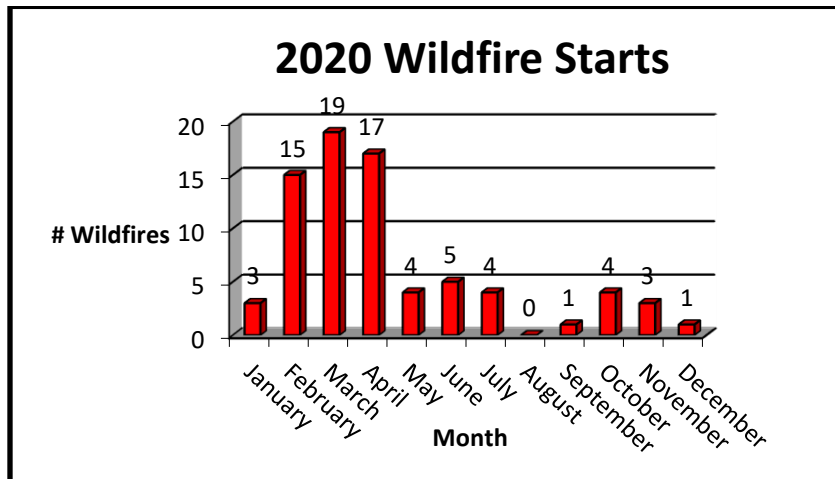


USDA Forest Service WILDFIRE SUMMARY REPORT (Reference FSH 3090.11)			
1. Area/Region: USDA FS (Region 9) SPF		2. State: Maryland	3. Calendar Year: 2020
4. Program: Cooperative Fire Protection		5. Source: Maryland Forest Service	
ITEM (a)	LINE (b)	NUMBER (c)	ACRES (d)
6. Protective status: a. TOTAL ACREAGE PROTECTED	1		3,200,000
7. Wildfires and acres burned by causes;			
a. Lightning	2	0	0
b. Campfire	3	1	0.2
c. Smoking	4	3	11.6
d. Debris burning	5	28	116.4
e. Arson	6	14	1168.1
f. Equipment Use	7	6	65.8
g. Railroads	8	1	1.0
h. Children	9	3	3.1
i. Miscellaneous	10	20	55.3
j. TOTAL (add lines 7a through 7i)	11	76	1421.5
8. Wildfire and acres burned by size class			
a. Class A - 0.25 acres or less	12	17	2.3
b. Class B - 0.26 to 9 acres	13	49	95.4
c. Class C - 10 to 99 acres	14	8	193.8
d. Class D - 100 to 299 acres	15	1	200.0
e. Class E - 300 to 999 acres	16	1	930.0
f. Class F - 1000 to 4999 acres	17	0	0
g. Class G - 5000 acres or more	18	0	0
h. TOTAL (add lines 8a through 8g)	19	76	1421.5

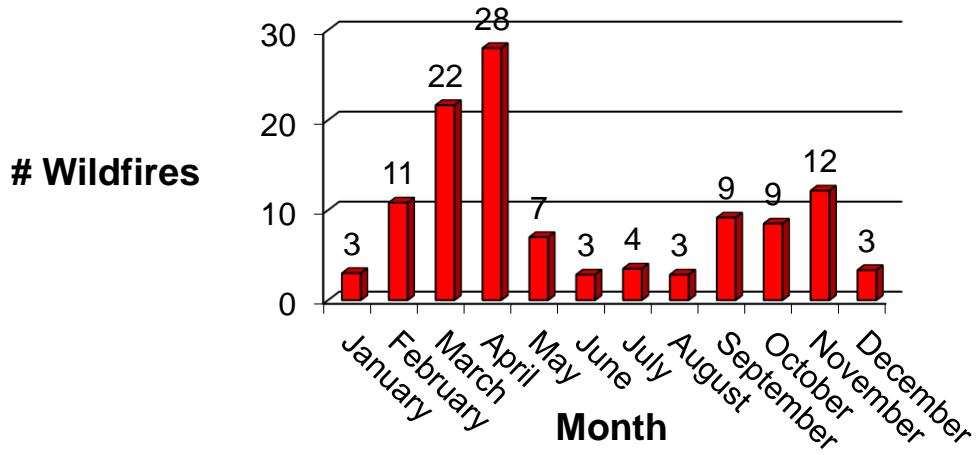
2020 Wildfires by Month

Month	2020	
	# Fires	Ac Burned
January	3	11.3
February	15	1,149.9
March	19	58.3
April	17	40.6
May	4	28.3
June	5	116.1
July	4	2.3
August	0	0.0
September	1	1.5
October	4	8.1
November	3	3.1
December	1	2.0
Grand Totals	76	1,421.5

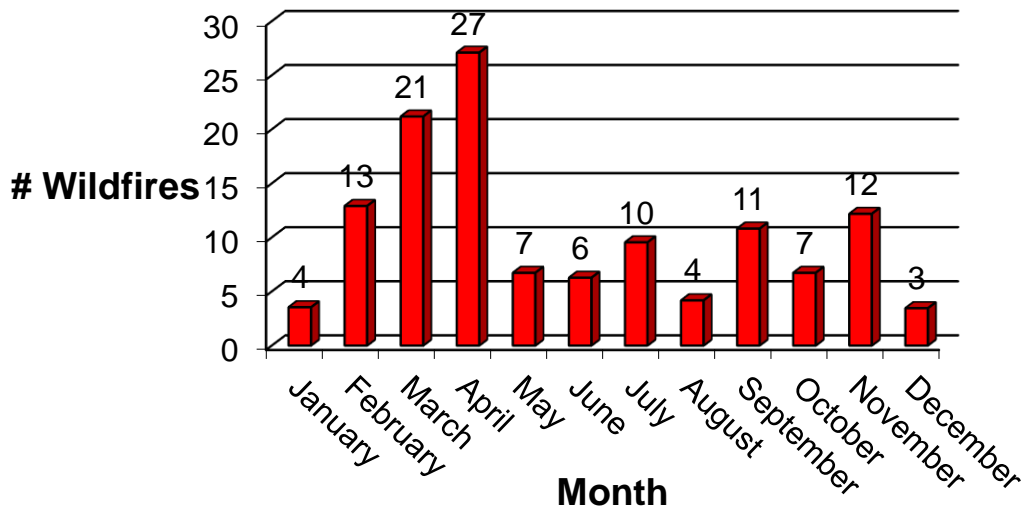
Average Wildfires by Month



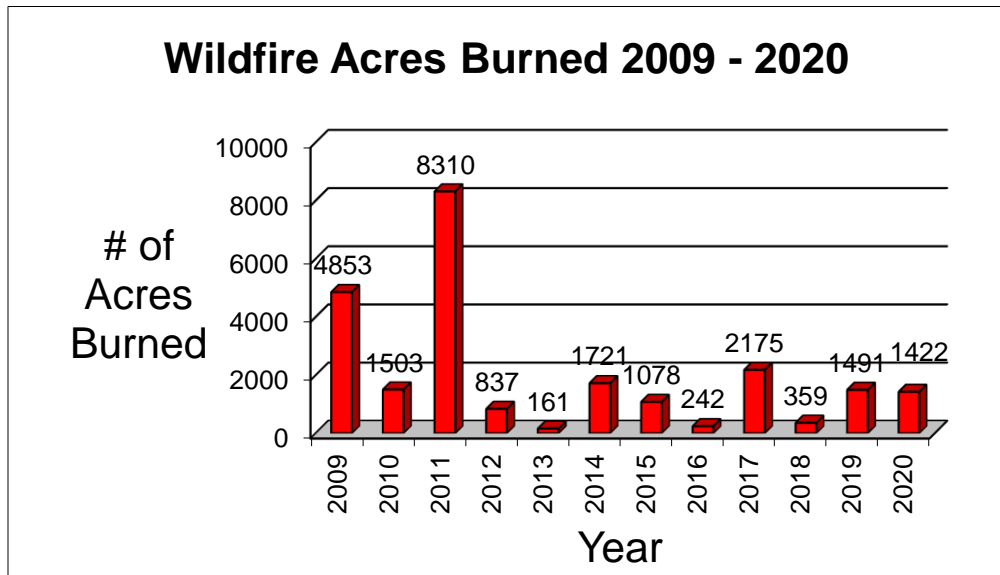
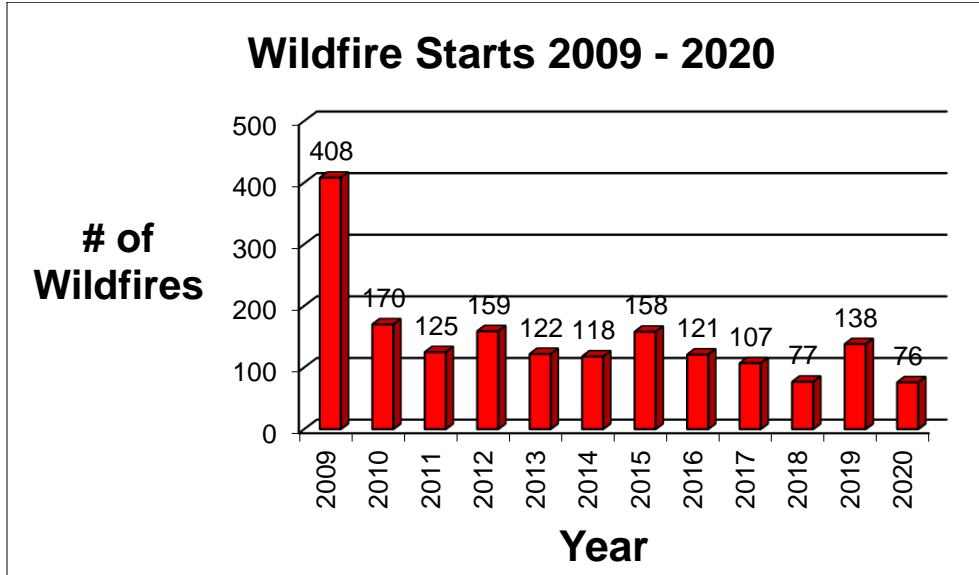
5 Year Average # Wildfires Per Month 2016 - 2020



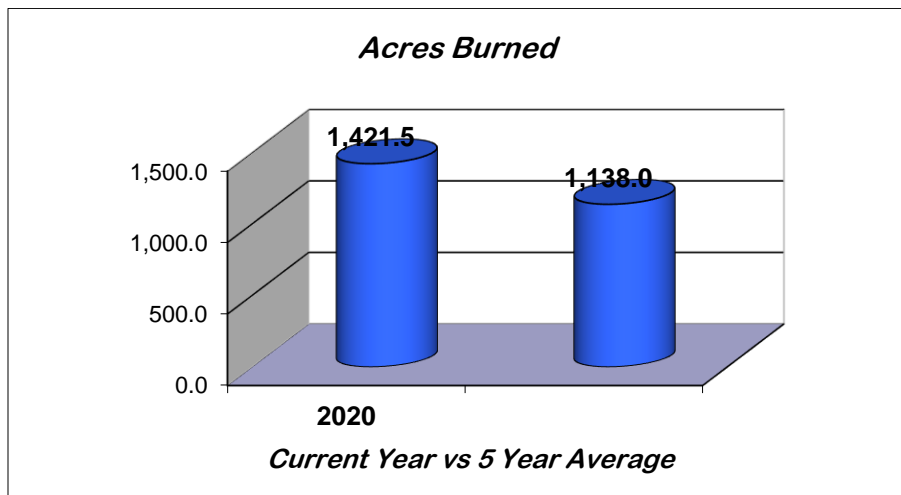
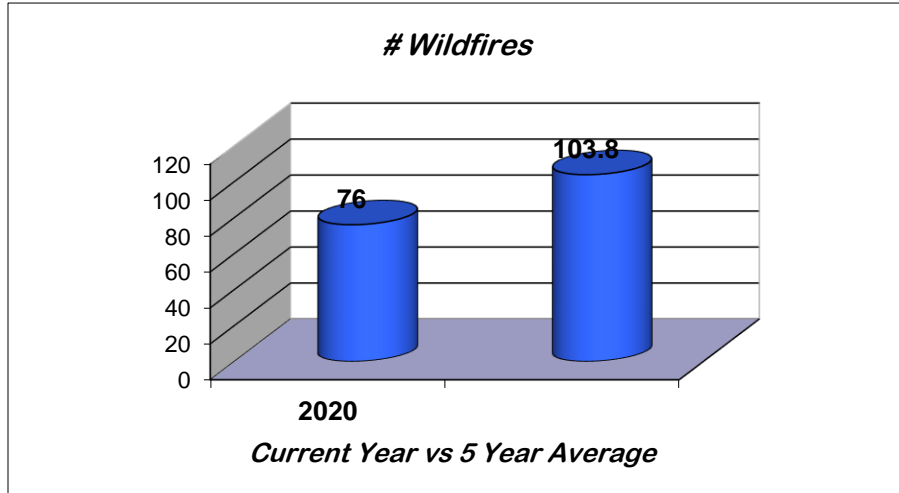
10 Year Average # Wildfires Per Month 2011 - 2020



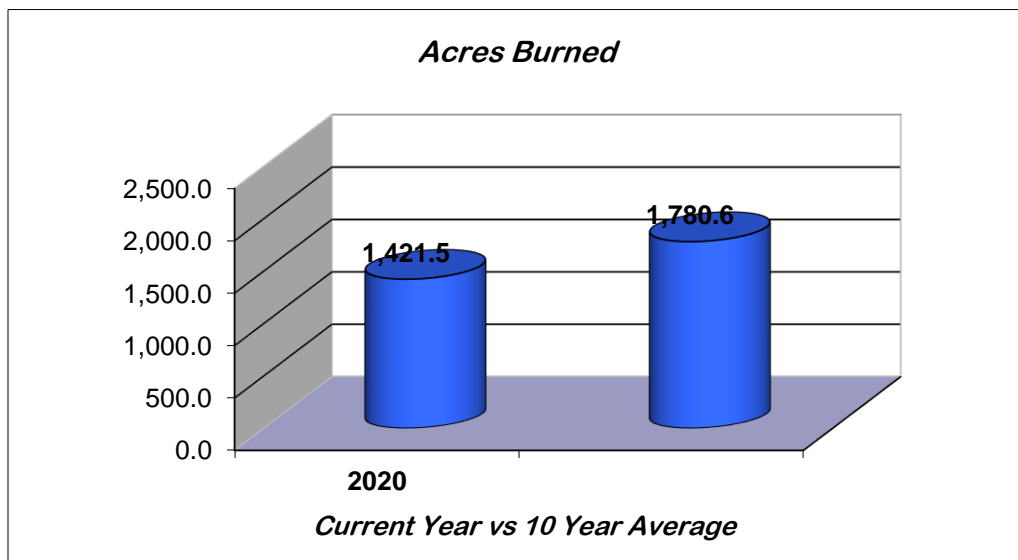
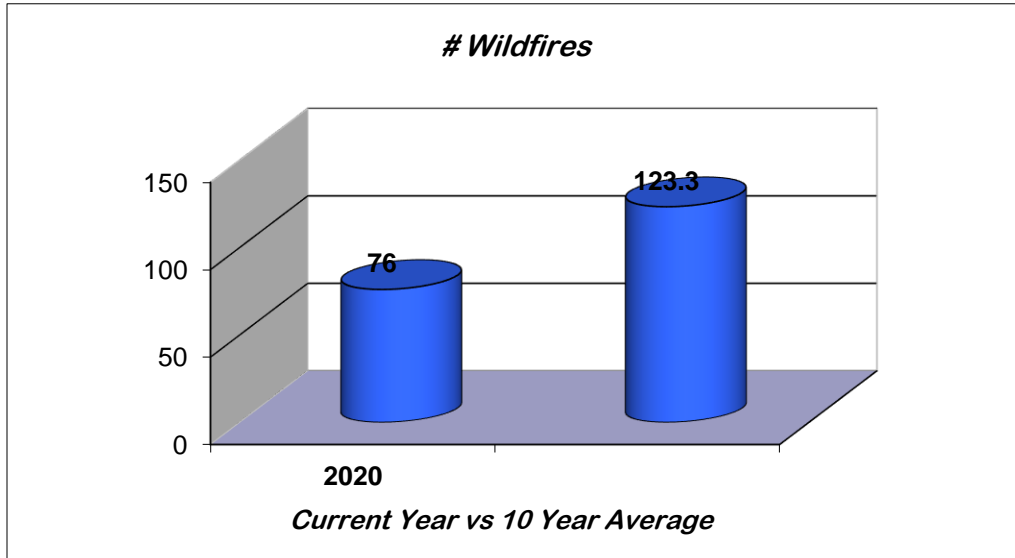
Fire Starts & Acres Burned 2009 – 2020



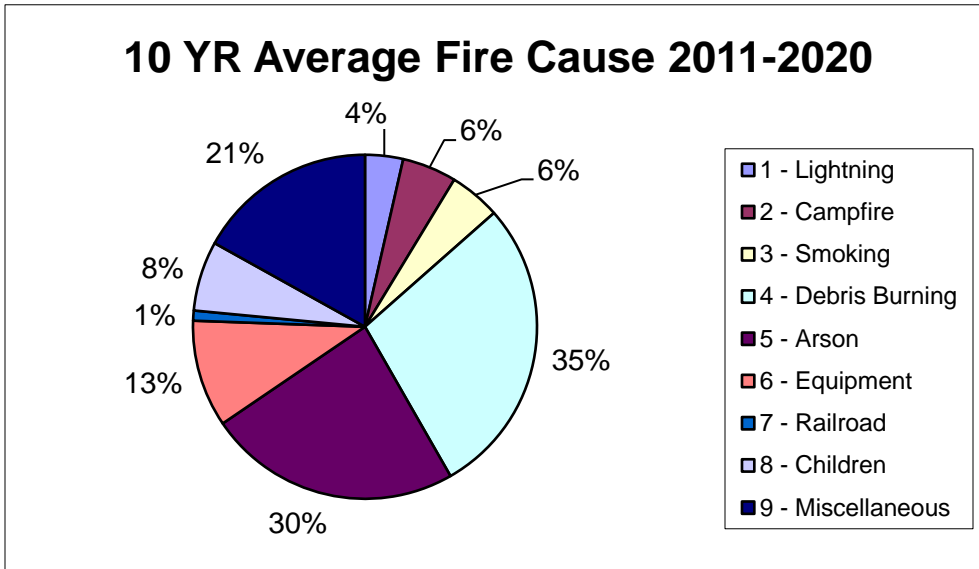
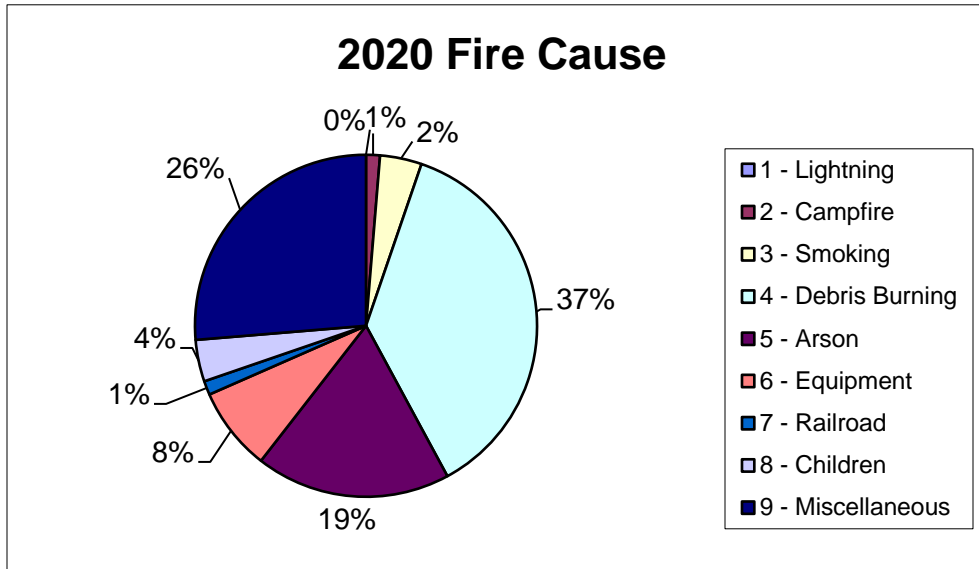
Current Year vs. 5 Year Average



Current Year vs. 10 Year Average



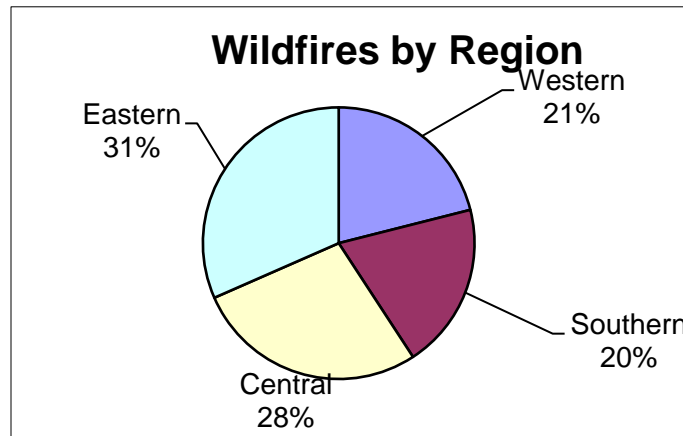
Wildfire Cause



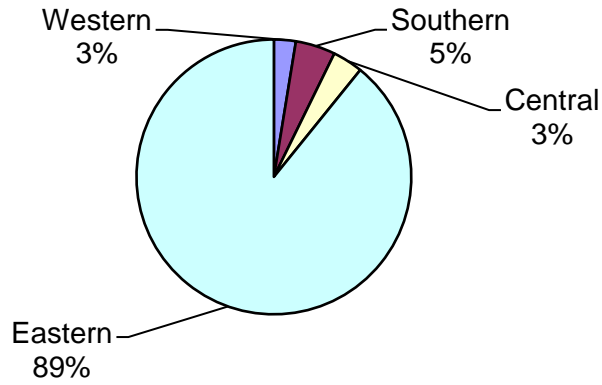
2020 Regional Statistics

Region	# Fires	Acres Burned
Western	16	36.5
Southern	15	66.6
Central	21	50.7
Eastern	24	1267.7
Totals	76	1421.5

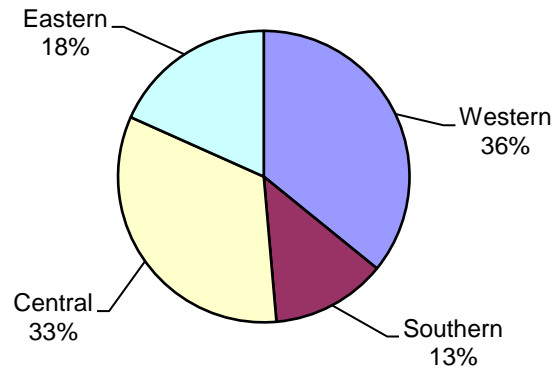
ACRES BURNED BY REGION				
Region	Forest	Marsh	Non-Forest	Total
Western	32.3	0.0	4.2	36.5
Southern	11.5	0.0	55.1	66.6
Central	29.8	1.0	19.9	50.7
Eastern	16.5	1143.1	108.1	1267.7
Totals	90.1	1144.1	187.3	1421.5



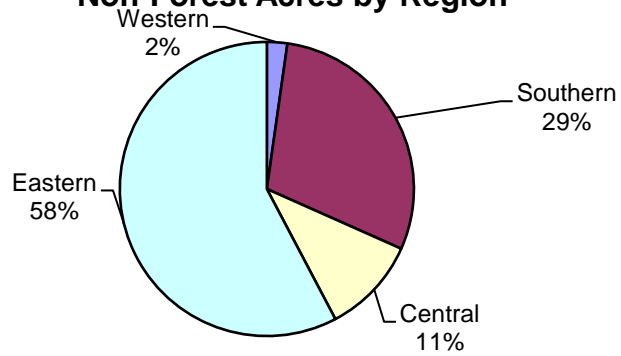
Total Acres by Region



Forest Acres by Region



Non-Forest Acres by Region



**Maryland Forest Service & Cooperators
2020 Prescribed Burns by Region**

Western				
COUNTY	MONTH	FUEL TYPE	ACRES	# OF BURNS
Allegany	February	Slash	22.0	1
Allegany	March	Grass	13.0	4
Frederick	December	Grass	1.2	1
Sub Total			36.2	6
Southern				
COUNTY	MONTH	FUEL TYPE	ACRES	# OF BURNS
Charles	March	Grass	15.0	1
Sub Total			15.0	1
Central				
COUNTY	MONTH	FUEL TYPE	ACRES	# OF BURNS
Cecil	February	Grass	18.2	1
Cecil	March	Grass	51.7	3
Cecil	September	Grass	5.2	1
Sub Total			75.1	5
Eastern				



Maryland

Larry Hogan, Governor
Boyd Rutherford, Lt. Governor



Jeannie Haddaway-Riccio, Secretary
Philip R. Hager, Assistant Secretary



Kenneth Jolly, Acting Director/State Forester
Chris Robertson, State Fire Supervisor

dnr.maryland.gov

Toll free in Maryland: 877-620-8367 | Out of state call: 410-260-8100 | TTY Users call via the MD Relay 711

The facilities and services of the Maryland Department of Natural Resources are available to all without regard to race, color, religion, sex, sexual orientation, age, national origin or physical or mental disability. This document is available in alternative format upon request.

Publication # DNR 02-012621-264