

Spring 2014



MANAGEMENT UPDATE

Frederick Municipal Watershed

The Frederick Municipal Watershed is a 7,022 acre property owned by the City of Frederick. The property is located on the east side of Catoctin Mountain, 6 miles northwest of the City of Frederick. It is managed as a cooperative wildlife management area with MD DNR—Wildlife. Forest management activities are under the direction of the MD DNR—Forest Service.

Forest Management

The timber stand improvement harvest near Gambrill Park and Delauter roads was completed in mid-March. Landings and skid trails were mulched and seeded with a mixture of clover, grasses, and other forbs (see image below). Native tree seedlings were planted on the landing, using stakes and tree shelters for protection from deer.



The variable retention harvest near the old Hamburg Tower was purchased by Red Rock, LLC last fall. Work began on this harvest just after completion of the Delauter road sale, around the beginning of April.

Harvesting on this timber sale is expected to be completed by the end of June. Landings and skid trails will be mulched and seeded.

The next silvicultural activity will take place between Gambrill Park and Cold Deer roads. The prescription for this stand is a commercial thinning.

This stand is currently 82 acres and is overstocked. Trees will be marked to be harvested to an average of 65 square feet basal area per

acre. Undesirable trees with poor quality and low vigor will be selected for removal. The residual trees will comprise desirable species with good quality and health, as well as good mast producers and potential den trees.

The layout of this sale will begin in June, with expected completion by early fall. The sale should be open for bidding by late fall, 2014.

Revenue generated by forest harvest operations is used to support other aspects of managing the watershed property including invasive species control, boundary painting, and other maintenance. All harvest operations are reviewed by a group of natural resource professionals and are conducted according to the forest stewardship plan for the property.

Invasive Species Management

With the arrival of spring 2014, comes the arrival of two new invasive plants on the Frederick Watershed; golden bamboo (*Phyllostachys aurea*) and leatherleaf mahonia (*Mahonia bealei*).

The bamboo (pictured to the right) is located to the east of Cold Deer Road off of Hamburg Road. This mature stand of bamboo is located near a pocket of gypsy moth mortality and is about a tenth of an acre in size.

The select method for control is to cut the mature stems with a chainsaw in early summer, allow the bamboo to re-foliate over the summer months, and then

apply of foliar spray of herbicide in early fall. Efforts to control the bamboo are underway.

Mahonia was discovered on the north end of the watershed, just off Gambrill Park Road extended. Only one stem was identified and it appears to be less of a threat. The best treatment methods are hand pulling or cut-stem



with herbicide.

Mahonia is a popular ornamental plant and has a beautiful yellow flower in spring. It produces grape-like berries that birds and other wildlife seem to enjoy. The seed remains viable and then is deposited in nearby forests.

Detailed survey efforts will continue throughout this summer to the south of Hamburg Road. Treatment efforts of previously identified "hotspots" will continue throughout this summer as well.

If you have any questions or find any infestations of other invasive plants on the watershed, please report them to the MD DNR Forest Service Watershed Forestry office at 301-791-4010.

Recreation Management

The Frederick Watershed continues to be a popular place to recreate in a variety of ways including: hunting, fishing, mountain biking, hiking, and more. Today, mountain biking is probably the most popular form, yet quite possibly the most detrimental to the forest ecosystems of the Watershed.

As mentioned in the fall newsletter, many new, unapproved or "rouge" trails have been established and sustain considerable use. Approximately 84 miles of trails have been mapped within the watershed by DNR staff. At this point, only about 12 miles are approved trails.

The concerns associated with these rouge trails include threats to sensitive areas which may include rare or endangered species, soil erosion on steep slopes near stream crossings, and crossing of private

properties (advertently or inadvertently).

In February, 2014 a second meeting was held with the City including representatives from MD DNR Forest Service, Fisheries, and Wildlife and Heritage, as well as a variety of trail user groups and local residents. At this meeting, the different user groups expressed their thoughts and concerns involving the increased high volume of mountain biking on the Watershed.

The city is currently in the process of forming a "task force" AD HOC Watershed Advisory Committee. This will include all of the representatives from the previous meeting, with just select members from user groups. The goals of this committee are: 1) to recommend revisions to the existing Forest Stewardship Plan that better define allowable

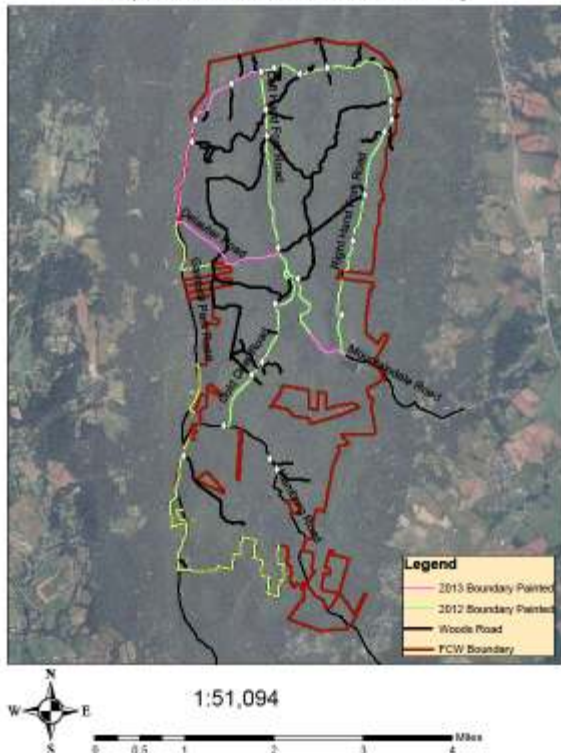


recreational uses; 2) to develop a sanctioned trail network system that preserves water quality and habitats for sensitive species, while providing sustainable, multi-use recreation trails; 3) developing a long term trail maintenance plan.

Once the AD HOC Committee has been selected, the group will meet to work on accomplishing these goals.

Boundary Management

Map 1 - Frederick Watershed Boundary



A map of the current boundary completion on the FCW

As you can see from the map to the left, significant progress was made on boundary marking throughout 2012, illustrated with green lines. Progress continued into 2013, indicated by pink lines. Approximately 8 miles of exterior boundary and 10 miles of roadside boundary have been marked throughout 2012 and 2013. Boundary lines are marked with a red band near eye level when entering the property and a red dot on the back side when leaving the property.

Work on boundary marking will resume later this year starting on the north end of the property near the intersection of Tower and Gambrill Park roads.

DNR staff have located property corners from tower road to the east and then south around to Mountindale Road. Forestry staff will work to accomplish this section of boundary, along with some in-holdings throughout 2014.

FREDERICK MUNICIPAL WATERSHED MANAGEMENT UPDATE

Questions contact:

Adam Miller,
Watershed Forester
amiller@dnr.state.md.us
301-791-4010

Donald Rohrback,
Wildlife Habitat Manager
drohrback@dnr.state.md.us
301-842-3355

