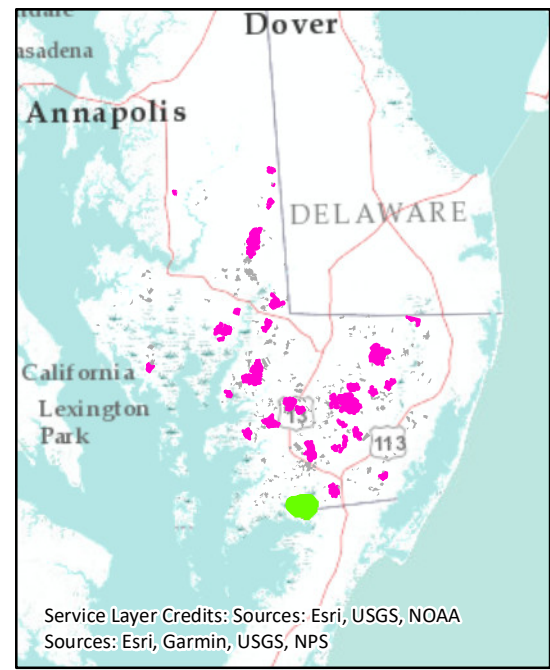


| Legend |                          |                                    |
|--------|--------------------------|------------------------------------|
|        | <b>Chesapeake Forest</b> | <b>Public Hunting Tracts</b>       |
|        | <b>Chesapeake Forest</b> | <b>Not Open for Public Hunting</b> |
|        | <b>Chesapeake Forest</b> | <b>Parking Area</b>                |
|        | <b>Roads</b>             | <b>Right-of-Way</b>                |
|        | <b>Roads</b>             | <b>Handicapped Access</b>          |
|        | <b>Roads</b>             | <b>Forest Roads</b>                |
|        | <b>Roads</b>             | <b>Forest Trails</b>               |
|        | <b>DNR Lands</b>         | <b>State Park</b>                  |
|        | <b>DNR Lands</b>         | <b>Wildlife Management Area</b>    |
|        | <b>DNR Lands</b>         | <b>Other DNR Lands</b>             |
|        | <b>DNR Lands</b>         | <b>Pocomoke State Forest</b>       |

PLEASE READ THE SPECIAL HUNTING REGULATIONS PERTAINING TO CHESAPEAKE FOREST:  
<http://www.dsd.state.md.us/comar/getfile.aspx?file=08.01.07.04.htm>



Service Layer Credits: Sources: Esri, USGS, NOAA  
 Sources: Esri, Garmin, USGS, NPS

ASC-DNR Forest Service 11/2020

# CHESAPEAKE FOREST PUBLIC USE AREAS

## S55 - MARUMSCO COMPLEX - 1,083 ACRES - SOMERSET COUNTY

