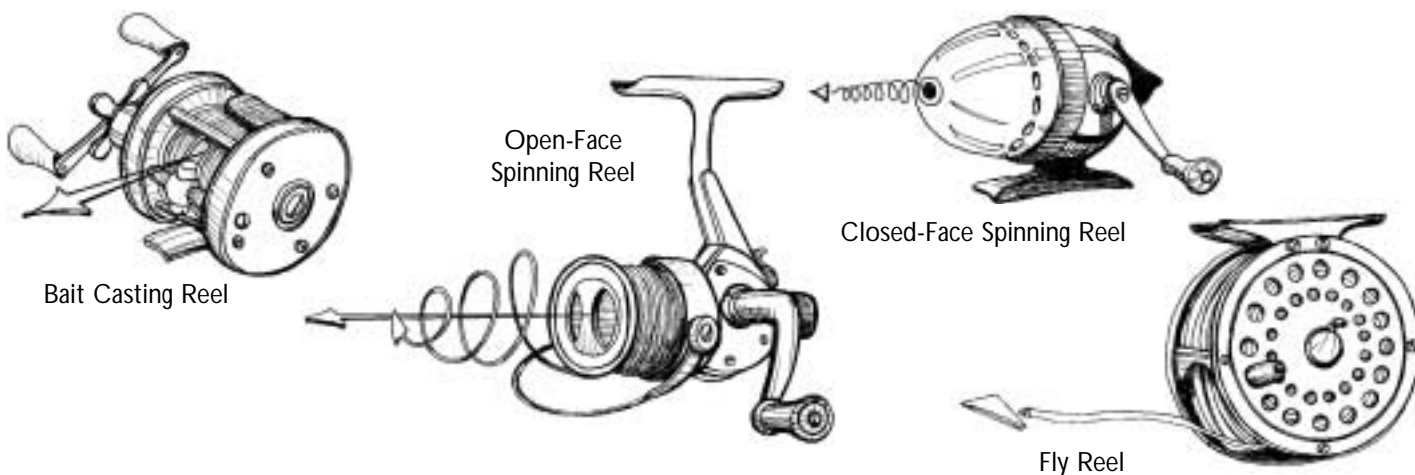


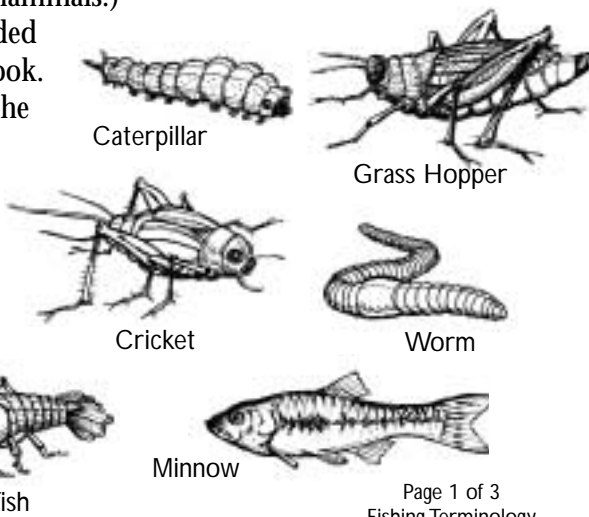
NAMES YOU NEED TO KNOW – FISHING TERMINOLOGY

There is lots of great tackle available Here are some terms of basic tackle items and techniques to help you get started.

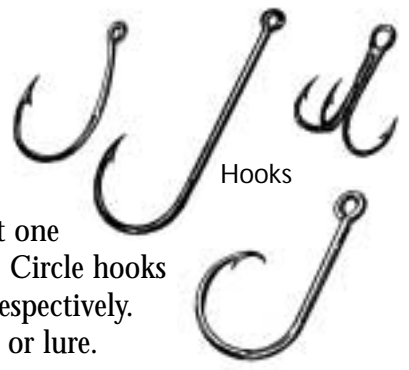
- **ROD** – A long lever, usually made of fiberglass, graphite or composite materials and used to catch fish. Different types are available, such as rods for spinning, fly fishing, spincast, bait casting, boat fishing, offshore trolling, surf fishing, jetty/pier fishing, etc. Most rods have a reel-holding clamp and guides through which the line runs.
- **REEL** – A mechanical device for holding and spooling fishing line. Reels have a line spool, brake to slow running fish, handle to retrieve line and foot for clamping to a rod. Reel styles include **CASTING** (revolving spool), **SPINNING** (line coiling off stationary spool); **SPINCAST**, (like spinning but with a nose cone), and **FLY** (storing thick fly line/backing and to fight big fish).



- **LINE** – Specialized "string" used for fishing. Nylon monofilament line is the most popular. Other lines are made of different materials, including braided fibers and wire. **FLY LINE** is a specialized line made of a plastic coating on a core, and often made tapered (changing diameter) to make fly casting easier. (To preserve good fishing, take any discarded line with you when you leave. Discarded line can snag and harm wildlife, and kill fish, turtles, frogs, birds and small mammals.)
- **LEADER** – A length of monofilament, wire or other stranded material tied between the end of the line and the lure or hook. Leaders provide extra strength or abrasion resistance from the rough mouth and teeth of fish (pike, barracuda, sharks), scales (sharks), gill covers (tarpon and snook), blows from tails (tuna).
- **BAIT** – Natural attractant added to a hook to catch fish. Bait includes live and dead baitfish, crabs, crayfish, worms, eels, insects, mussels, clams, cut bait (fish), chicken livers, corn kernels, dough balls, squid, and shrimp.



- **LURE** – Any artificial item designed to attract fish and fitted with hooks. These include flies, hard plastic or wood lures (or plugs), soft plastic imitations, large offshore skirted baits, metal spoons, lead-head lures (jigs), bladed lures, spinners, spinnerbaits.



Hooks

- **HOOK** – A metal wire device shaped like a "J" with an opening or "eye" at one end to which the line is tied and a point at the other end to catch the fish. Circle hooks have an angled point. Double and treble hooks have two or three points, respectively.

- **SINKER** – A weight of lead or other metals designed to sink a hooked bait or lure.



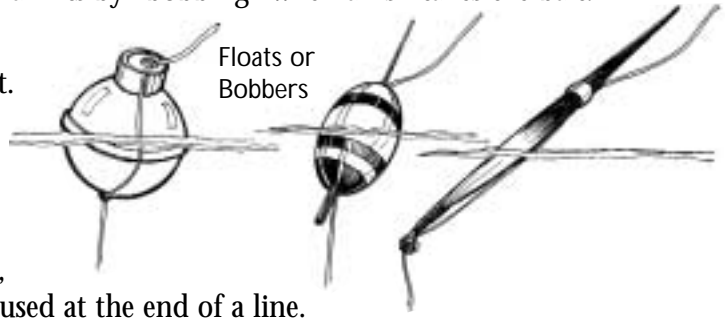
Sinkers

- **FLOAT** – Also called a "bobber", these suspend hooked baits off of the bottom, and signal hits by "bobbing" when a fish takes the bait.

- **STRIKE** – Any "hit" by a fish taking a lure or bait.

- **TACKLE BOX** - A box or bag with special compartments and features to hold terminal tackle, lures, hooks, and other fishing gear.

- **TERMINAL TACKLE** – A general term for describing bobbers, sinkers, hooks, rigs, snaps, swivels and other gear used at the end of a line.



Floats or Bobbers

Snaps



- **SNAP** – A small device similar to a dog leash snap, tied to the line and used for attachment and quick release of hooks, rigs and lures.

- **SWIVEL** – A small device with two or more eyes (rings) a central swiveling part. They are used between a lure or leader and line to prevent line twist. Otherwise, line twist can occur when a revolving lure twists line to cause tangles.

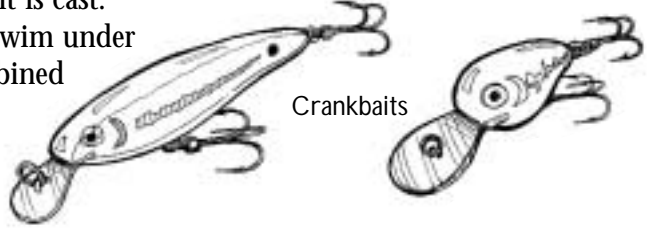


Swivels

- **TROLLING** – A method of slowly running a boat while trailing lures or bait. This fishing method is used to cover a lot of water and to find fish.

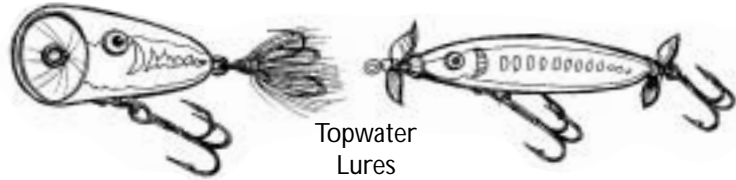
- **STILL FISHING** - Fishing without moving the bait once it is cast.

- **CRANKBAIT** – A fish-like hard lure or plug designed to swim under the surface, often made of plastic or wood. Some are combined with replaceable soft plastic tails.



Crankbaits

- **TOPWATER LURE** – Lures made of hard plastic, wood, hollow rubber/plastic and designed to float on the surface to attract fish when twitched or moved.



Topwater Lures

- **SOFT PLASTIC LURES** – Made of a soft plastic to resemble a worm, lizard, crayfish, shrimp or generic wiggling creature. Often sold in bulk to be rigged on a hook by the angler.

- **SPINNERBAIT** – "Safety pin" style wire lures with one or more spinner blades on the end of one wire, and a weighted body, skirt and hook on the other. Used to fish around structure such as trees and stumps.



Soft Plastic Lures



Spinnerbait



Buzzbait

- **BUZZBAIT** – These "safety pin" wire lures for surface fishing have a propeller blade on one wire and a weighted body, skirt and hook on the other.
- **JIG** – Sometimes called "bucktails", these weighted-body (often lead) lures are molded on special hooks and rigged with a hair tail or soft plastic skirt or worm.



Spinner

- **SPINNER** – Spinner blades rotate around the straight wire shaft of these weighted-body treble-hook lures.



Jigs



Tube Bait

- **TUBE BAIT** – Made of soft plastic, these tubular lures are fished with special weighted hooks inserted into the hollow body.

- **BLADE BAIT** – A weighted, fish-shaped blade made with a swinging hook and designed for fishing deep.



Blade Bait

- **CHUMMING** – A fishing technique by which bait or scent is released into the water to attract fish to take a lure or baited hook. Chum consists of live, dead, ground-up or prepared baits and scents and is used in fresh and saltwater.
- **JIGGING** - A method of dropping a lure into the water over a fishing site and moving it - "jigging it" - up and down to attract fish. Done from a pier or boat.
- **CASTING SPOON** – A spoon-shaped metal or hard plastic lure that wobbles to attract fish. They can be fitted with a fixed (solid) hook or swinging hook, that has a single, double or treble points.
- **WEEDLESS SPOON** – Wobbling spoons made with a fixed hook and guard for fishing weeds.
- **STRUCTURE SPOON** – Both casting and vertical jigging techniques are used for fishing these swinging hook heavy metal lures.
- **TROLLING SPOON** – A large spoon that is trailed, or trolled, behind a boat to catch fish.



Weedless Spoon



Structure Spoon



Trolling Spoon

For more fishing and boating tips, visit TakeMeFishing.org