



Maryland's Coastal Atlas

Maryland's Chesapeake & Coastal Service

The Coastal Atlas is an online mapping and planning tool that allows state and local decision-makers to visually analyze and explore data for coastal and ocean planning activities.

Maryland's Blue Infrastructure

Our ocean and estuarine environments today face an era of unprecedented activity. Wind farms and other energy facilities, commercial fishing, diverse recreational uses, and shipping highways are all competing for use and space. To ensure the protection of Maryland's critical ocean and estuarine resources—our Blue Infrastructure—and the coastal economies that depend on them, the Coastal Atlas has been developed to provide direct access to available data needed for coastal and ocean planning efforts. From finding the best location for renewable energy projects to locating sand resources needed for beach replenishment to helping local communities identify areas vulnerable to sea level rise and erosion – the Coastal Atlas will assist users in identifying potential conflicts so that they can be avoided early in the planning process.

"By having a real understanding of where resources are located and what they provide to us, the Coastal Atlas will help us better protect ocean resources and balance the many commercial and recreational demands they face."

- Governor Martin O'Malley

Better Decision-Making

The Coastal Atlas is the result of a collaborative effort among the Maryland Department of Natural Resources, the Maryland Energy Administration, Towson University, the University of Maryland, The Nature Conservancy and the National Oceanic and Atmospheric Administration.

The data available through the Coastal Atlas includes physical characteristics, human uses and ecological resources.

Through the Coastal Atlas, users are able to visualize, query, map, and analyze available data to better manage our marine and estuarine resources.

The tools currently available, and those that will be continually updated for the Coastal Atlas, are designed to support better decision-making by transforming available data into information tailored for specific issues.



Horn's Rev Wind Farm (www.hornsrev.dk)



Coastal Zone Counties:

Anne Arundel

Baltimore

Calvert

Caroline

Charles

Cecil

Dorchester

Harford

Kent

Prince George's

Queen Anne's

Somerset

St. Mary's

Talbot

Wicomico

Worcester

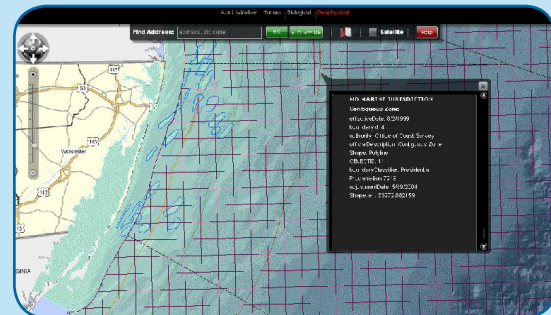
and

Baltimore City

To help concerned citizens address specific coastal issues, the Coastal Atlas offers several mapping applications for Maryland's Blue Infrastructure:

Ocean

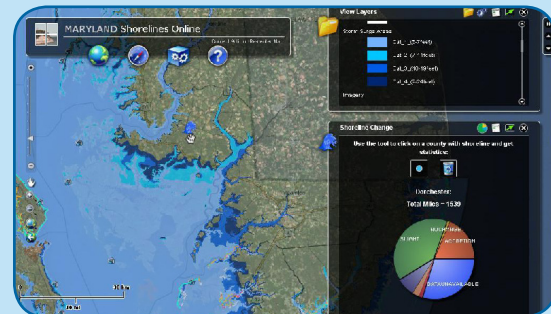
Allows users to view ocean data and access tools to understand and balance multiple ocean uses, including shipping, offshore renewable energy, recreation and fishing.



Screen shot of the Coastal Atlas' *Ocean* mapping tool

Shorelines

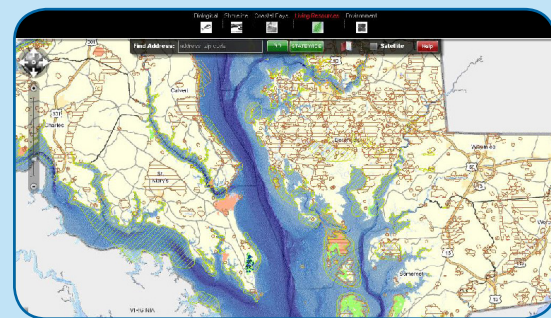
Allows users to access state shoreline erosion data, understand basic information about coastal flooding and identify areas at risk to sea level rise.



Screen shot of the Coastal Atlas' *Shorelines* mapping tool

Estuaries

Allows users to identify and access critical habitats in estuarine and near-shore environments for targeted conservation, protection and restoration activities such as tidal wetlands, priority finfish habitat and submerged aquatic vegetation.



Screen shot of the Coastal Atlas' *Estuaries* mapping tool

Coastal Atlas Training

The Chesapeake & Coastal Service will offer training opportunities to help users make the most of the data and tools found on the Coastal Atlas.

The State is interested in receiving comments on the Coastal Atlas as well as feedback on the data and tools needed to help users address specific coastal issues. For questions, additional information or to view Maryland's Coastal Atlas, visit: <http://dnr.maryland.gov/ccp/coastalatlus>.

Photo credits:

Jack Diamond, Chuck Prah,
Laura Younger, Chris Paulis,
George Close and
Andy Aughenbaugh

