

# Land Marks

Protecting Land Forever

## Governor Hogan Recognizes MET's 50th Anniversary



Sen. Adelaide Eckardt, Governor Hogan, DNR Assistant Secretary Daryl Anthony and MET Director Bill Leahy. Photo by Executive Office of the Governor



MET's Chair Jim Constable presents remarks at the reception. Photo by Executive Office of the Governor

Over 100 guests attended a reception on October 12, 2017 at the Government House in Annapolis to celebrate the Trust's 50th anniversary, honor recent conservation easement donors and major financial donors. Governor Larry Hogan recognized landowners for their recent contributions to private land conservation in Maryland. As part of the ceremony, he thanked landowners from across the state for donating conservation easements on their land to the Maryland Environmental Trust from June 2014 through September 2017. These easements limit development rights and have permanently protected 2,982 acres of scenic, historic, natural, cultural and environmentally-sensitive lands from development.

"Our administration is grateful to conservation-minded citizens for their commitment to preserving land in Maryland," said Governor Hogan. "These easements are an example of how individual Marylanders can play an essential role in safeguarding our state's most treasured places. Their

commitment to protecting farms and forests, beaches and bays, and our state's natural and cultural resources benefits all Maryland citizens by helping ensure healthy local communities and economies, clean air and water, and the restoration of the Chesapeake Bay."

Since Maryland Environmental Trust received its first donation of a conservation easement 45 years ago on a 10.5 acre property in Anne Arundel County, the Trust has assisted landowners, local land trusts, and other partners in every county to protect and steward more than 135,000 acres of open space.

"I am heartened by the continued number and quality of easements that have been donated to Maryland Environmental Trust during the Hogan administration," said James Constable, Board Chair. "We have accepted more than 27

*Continued on page 8*



Left: Yumi Hogan welcomes guests to Government House. Photo by Executive Office of the Governor



**BOARD OF TRUSTEES**

James W. Constable, *Chair*  
The Honorable S. Jay Plager, *Vice Chair*  
Doris Blazek-White, *Treasurer*  
Mary Burke, *Secretary*  
Gary Burnett  
Goodloe E. (Geb) Byron Jr.  
Richard D'Amato  
David Greene  
Philip R. Hager  
Julia Jitkoff  
Toby Lloyd  
Royden Powell  
Michael Pretl  
Sarah Taylor-Rogers, PhD

**EX OFFICIO MEMBERS**

Senator Adelaide C. Eckardt  
Delegate Dana Stein  
Tom McCarthy (*Governor's Representative*)

**AREA REPRESENTATIVES**

Bill Crouch - *Anne Arundel County*  
Charlotte Hawes - *Kent County*

**TRUSTEES EMERITI**

K. King Burnett  
Ellen Kelly  
John C. Murphy  
Henry A. Virts

**STAFF**

William Leahy, *Director*  
  
Megan Benjamin, *Central/Western Region Planner*  
  
Ann Gutierrez Carlson, *Eastern Region Planner*  
  
Jon Chapman, *Stewardship Program Manager*  
  
Michelle Funches, *Technology & Quality Control Manager*  
  
Michelle Grafton, *Land Trust Assistance Coordinator*  
  
Mona Rudnicki, *Bookkeeper*  
  
Wendy Stringfellow, *Development/Communications Coordinator*  
  
John Turgeon, *Easement Program Manager/Southern Region Planner*  
  
Vacant, *Office Manager*

# Director's Note

## The Power of Places, Parcels, Partners, and People



The word parcel has two common-use definitions. A parcel is a package, wrapped up to be delivered and presented, often as gift. A parcel is also a piece of land, with all of its possibilities.

Here at Maryland Environmental Trust, we have worked with many partners and landowners to ensure that 1,200 parcels of land totaling over 135,000 acres of Maryland have been effectively protected — wrapped with conservation easements for future generations. These easements, usually donated to the public by generous landowners, are a gift that keeps giving. With each gift, historic family farms, wooded mountainsides, and shimmering waterfront wetlands, are secured long into the future.

These lands and the powerful public-private partnerships that created them are the foundations of our future work. We understand now that more needs to be done to increase the benefits that conserved lands provide. In the pages of this Land Marks, you will see how we are working with an even broader array of partners to unlock those gifts, connecting all Marylanders with those benefits. In powerful places across the states, we are:

- **Planting more trees** — With our partner, the Maryland State Highway Administration, we find MET easement landowners who have the space and commitment for large scale planting and restoration projects. Together, we are starting a large stream restoration project in Cecil County along Grammie's Run, which will also improve the public lands and waterways of the Fair Hill Natural Resources Management Area. Our next project is within the Gunpowder Falls watershed near Hereford, in Baltimore County.
- **Advancing greener cities** — The Maryland Department of Housing and Community Development and the Maryland Department of Transportation join us in our Keep Maryland Beautiful grants program. These small grants to local groups in urban areas promote street-wise stewardship of parks, playgrounds, and shared community space. With groups like Baltimore Green Space and NeighborSpace of Baltimore County, we are finding new ways to enhance and protect community gardens and pocket parks that keep nature just around the corner in cities and suburbs.
- **Building a green workforce** — We have trained and assigned members of the Maryland Conservation Corps to visit and monitor MET easements, introducing them to the world of land trusts and preservation and building real world, in-the-field experience with parcels and property owners.
- **Partnering to Protect Special places** — Working with the U.S. Fish & Wildlife Service, the Land Trust Alliance/Land and Water Initiative, and the Civil War Trust, we are preserving private property that buffers scenic public lands and waters.
- **Celebrating** — For our 50th Anniversary, Governor Larry Hogan hosted a celebration of land donors, landowners, and local land trusts that have helped MET achieve this land conservation success.

While continually building the portfolio of preserved parcels, we are packaging new presents of green potential for more Marylanders. Our list of partners is growing, and with your continued help, we will mind all the Ps — and the queue.

Bill Leahy II, Director





# Volunteer Update: Maryland Conservation Corps

This past October MET trained 35 Maryland Conservation Corps members in land conservation and monitoring. These young adults will serve as MET volunteers monitoring in the field.

The Maryland Conservation Corps is a ten month program that provides members with training in green careers, conservation efforts in Maryland and global sustainability. The Maryland Conservation Corps (MCC) program is a great way for young adults to learn team-building skills while gaining hands-on experience and certifications. The MCC engages young adults in extensive natural resource management and park conservation projects. MCC members are stationed in seven parks throughout Maryland.



*The Maryland Conservation Corps is a ten month program that provides members with training in green careers, conservation efforts in Maryland and global sustainability.*

In an average year MCC Volunteers will:

- Plant thousands of trees
- Maintain hundreds of miles of trails
- Work with schools to plant bay grasses
- Restore wildlife habitat
- Conduct interpretive programs in state parks
- Support the improvement of the Chesapeake and Coastal Bays
- Improve park nature centers
- Help preserve Maryland's rich historical heritage
- Provide environmental education programming for roughly 10,000 Maryland students



*If you are interested in volunteering at MET, contact MET at [met.info@maryland.gov](mailto:met.info@maryland.gov).*

# MET

## BY THE NUMBERS

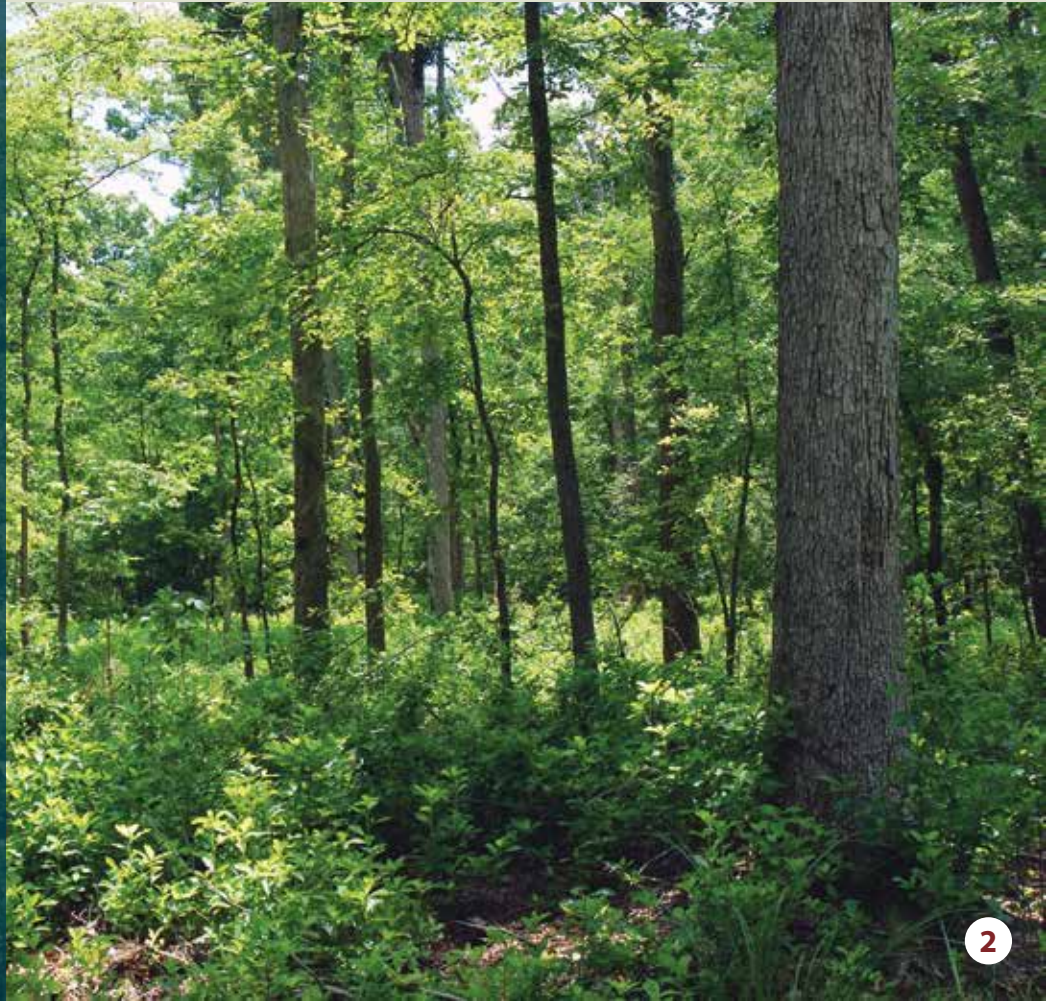
Maryland  
Environmental  
Trust



1,744 ACRES PROTECTED FOREVER

# 2017 Easements

**W**orking collaboratively with landowners and land trust partners, MET staff negotiated the donation or bargain sale of ten conservation easements that protect approximately 1,744 acres of significant environmental, agricultural, scenic, and historic land in 2017. The new easements were accepted in six counties across the state. Five of the ten easements are co-held with a nonprofit land trust. Two amendments of existing MET easements were also completed in 2017 that strengthen conservation provisions on close to 280 acres. Highlights by region are as follows.





## EASTERN REGION

Oldfield Point Farms, LLC, granted a conservation easement on 679 acres in Kent County to MET and the Eastern Shore Land Conservancy. This easement, which was featured in the Fall/Winter 2017 edition of *LandMarks*, forever protects farmland and forest along the Chesapeake Country National Scenic Byway (Maryland Route 213) and the Sassafras River. *(Photo 1)*

The Gannon Family, LLC, granted a conservation easement on what is locally called “Lee Haven Farm,” forever protecting scenic views and prime agricultural land in Talbot County. *(Photos 2 and 3)* These 232 acres are immediately outside the Town of Easton. The property consists of approximately 100 acres of farmland and 125 acres of forest. The Eastern Shore Land Conservancy co-holds this easement with MET.

In Cecil County, Brenda and Warren Dedrick, proprietors of Chateau Bu-De winery and vineyard, permanently protected 347 acres of farmland and forest along the Chesapeake Country National Scenic Byway. *(Photos 4 and 5)* MET and the Eastern Shore Land Conservancy accepted the easement donation that conserves the land surrounding the winery operation. The farmland and forest of the property are visible from the Byway and showcase the rural character and natural heritage of the area. Also located along the Bohemia River, the newly protected land was once part of Augustine Herman’s estate known as Bohemia Manor Farm, which dates from the 17th century. The recently acquired Bohemia River State Park is situated across Route 213 from the conservation easement.





# 2017 Easements

CONTINUED FROM PAGE 5



## CENTRAL-WESTERN REGION

In Baltimore County, the Fenwick family donated an easement on their 98 acre farm along Tufton Avenue in Glyndon. The easement will ensure the protection of the scenic view of this farm along the Horses and Hounds Scenic Byway within the Worthington Valley National Register Historic District. (Photos 6 and 7)

Keyser Run, LLC donated an easement on a 97 acre property located adjacent to the Liberty Reservoir, protecting the water quality of the reservoir, as well as agricultural land, forest habitat, and scenic views. (Photo 8)

Within "My Lady's Manor" National Register Historic District near Monkton, Joshua Brumfield and Mary McBurney Swann donated a 53 acre easement to MET and The Manor Conservancy that protects their farm. (Photo 9)

Randall & Marlene Amon donated an easement on their 26 acre property near Parkton that protects forest, open land and scenic views. (Photo 10)

MET worked with the Land Preservation Trust to further protect the property of Michael and Ann Hankin located along Black Rock Road north of Reisterstown. An additional 63 acres



were added to the original easement that was previously donated to the Trust in 1994. Additional protections were added to the easement that now protects a total of 149 acres of scenic farmland and forest. (Photos 11 and 12)

Lewis M. Hale donated a conservation easement on 45 acres to protect the prime agricultural land, forest, and scenic views of the property along Lineboro Road in Carroll County. The easement also protects an unnamed tributary of Muddy Creek. (photos 13 and 14)

A 104 acre woodland tract in Edgewood was permanently protected under a conservation easement between the Harford Land Trust and Maryland Environmental Trust. Harford Land Trust gifted the easement to the Maryland Environmental Trust to ensure the area's rich ecological resources and scenic land along Willoughby Beach Road are safeguarded for the benefit of future generations. (Photo 15)

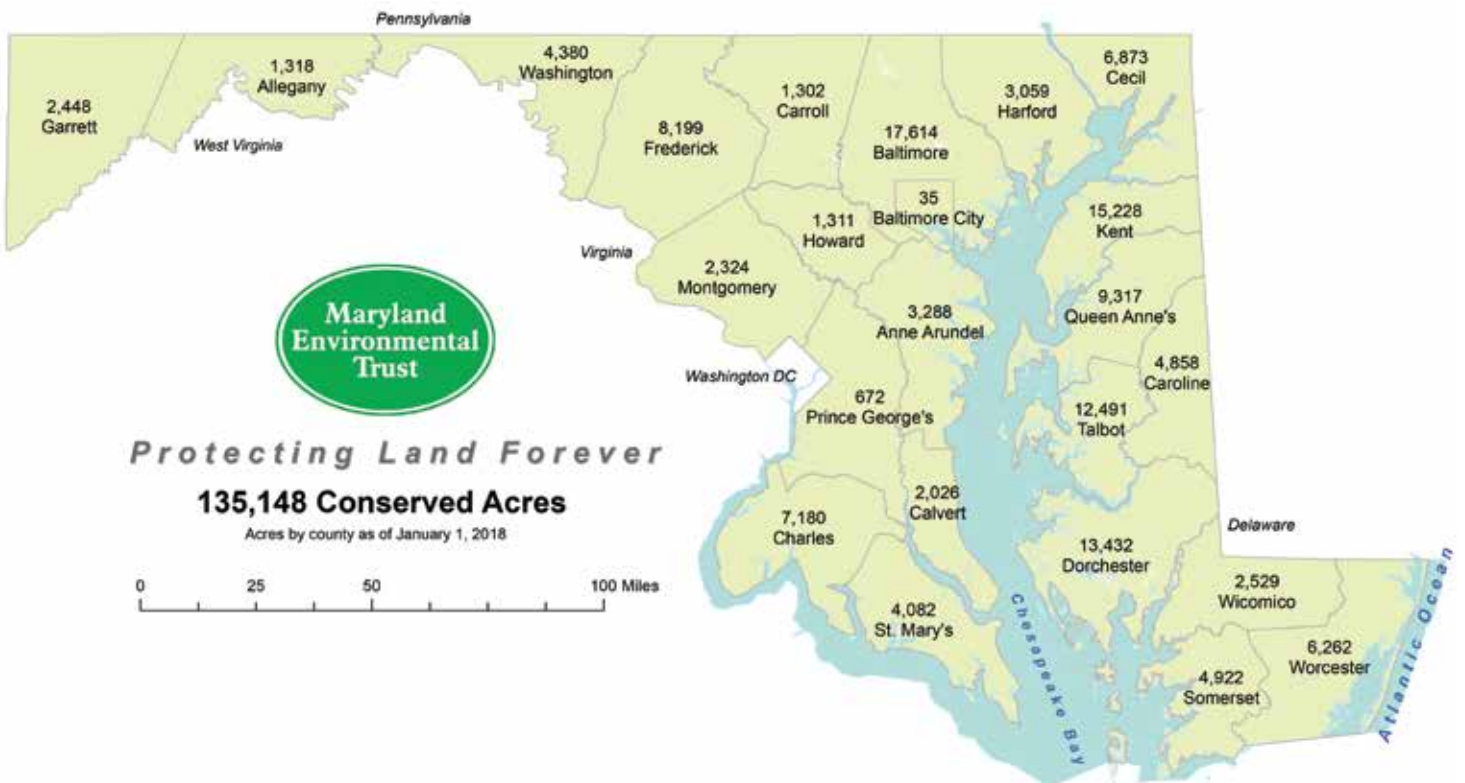
The property, known as the Otter Creek Preserve, is located in the Edgewood area of Harford County. The property was







donated to Harford Land Trust in the mid-1990s by the developer of the adjacent neighborhood, to preserve the unique habitat and scenic character of the woodlands. The 104 acres of deciduous woodlands and associated “vernal pools” comprise a natural community known as “flatwoods,” which is the largest intact woodland of its kind surviving in Harford County. The vernal pools provide breeding and feeding habitat for a large number of amphibians, reptiles, and many invertebrates. The flatwoods is also habitat for many bird species requiring large woodlands to survive, and is known to support species such as Ovenbird, Red-eyed Vireo, Scarlet Tanager, Acadian Flycatcher, Hairy Woodpecker, and Kentucky Warbler.





# MET's 50th Anniversary

CONTINUED FROM PAGE 1

easements and eight amendments since 2014. When added to DNR's success with Rural Legacy, the Maryland Agricultural Land Preservation Foundation and the local land trusts that Maryland Environmental Trust supports, the numbers are truly impressive. We are grateful to the participating citizens and land trusts for helping preserve and steward these beautiful lands. It serves as a wonderful gift for future generations."

Conservation easement donations on privately owned land are a cost-effective way to protect Maryland's natural resources. The Trust's Conservation Easement Program serves as an alternative tool to land purchase programs by providing a tax



Bill Leahy, Sec. Mark Belton, Judy Gifford, Chair Jim Constable and Governor Hogan. Photo by Executive Office of the Governor



Governor Hogan with recent conservation easement donors. Photo by Executive Office of the Governor

benefit package to qualifying landowners that includes a 15 year property tax credit, a state income tax credit, federal income tax deductions and estate tax benefits.

"Easements sometimes are the culmination of several years' effort to conserve a property," Director Bill Leahy said. "Thanks to our unique collaborative approach, we are able to partner with landowners, the State Department of Natural Resources, local counties and cities, and others to set a great example of how to bring many different sources of support together to accomplish our mission."

The Maryland Environmental Trust was established in 1967 by the Maryland General Assembly as a charitable organization. The Trust currently holds more than 1,100 easements on over 135,000 acres in Maryland.

Maryland Environmental Trust

SAVE THE DATE

For more information visit MET's events page

2018

MAY 17

Maritime Conference Center  
Linthicum Heights

MARYLAND LAND CONSERVATION CONFERENCE



# Gramie's Run

## A CECIL COUNTY STREAM IS FIRST OUT OF THE GATE FOR NEW PARTNERSHIP BETWEEN MARYLAND ENVIRONMENTAL TRUST AND THE STATE HIGHWAY ADMINISTRATION

In the very corner of Maryland — even further northeast than the town of North East — a stream called Gramies Run flows south from near the Pennsylvania border into the Elk River, near the very top of the Chesapeake Bay. Winding through a landscape of farms and forests interspersed with suburban homes, this seemingly typical mid-Atlantic stream will now host a new, unusual set of restoration partners.

The headwaters of Gramies Run drain the Cecil County Fairgrounds and the equestrian center at Fair Hill International. Then further downstream after emerging from one of the sizable woodland tracts within Fair Hill Natural Resources Management Area the stream passes through farmland protected by a Maryland Environmental Trust conservation easement on land owned by Edward F. Kelley. In early 2017, MET and State Highways Administration approached Mr. Kelley about allowing a large scale stream restoration and tree planting project on his property. In the spirit of the original 2002 easement on his beautiful 108 acre farm along Gallaher Road, which was granted to MET and Cecil Land Trust, Mr. Kelley enthusiastically agreed and the potential became the possible.

In January 2018, the Maryland State Highway Administration launched the \$4.3 million restoration of Gramies Run. The project aims to enhance natural features and improve water quality by reducing erosion, filtering storm water, slowing water flow, and cooling



*Tree plantings on the Kelley property.*



*The Kelley property.*



*A root bound bend in Gramies Run near Fair Hill Natural Resource Management Area.*

water temperature through an expanded tree canopy over the stream. The planted riparian buffers will also fulfill provisions of the federal Clean Water Act that require states receiving federal highway funds to mitigate natural features to balance new road construction.

“We are very pleased to have Gramies Run as the first project in our partnership with the State Highway Administration,” said John Turgeon, Conservation Easement Program Manager for MET. “We are actively seeking out property owners with MET easements that have enough streambank or open space where SHA can restore natural flows and plant tree buffers.” SHA Administrator Greg Slater shares in the success, noting that, “Water runoff from highway surfaces can leave pollutants in streams and the Bay and we are partnering with DNR/MET to come up with innovative solutions to support Bay restoration.”

The project will reduce the amount of sediment and nutrients, such as nitrogen and phosphorous, that enter the Chesapeake Bay and pollute the water to the detriment of the flora and fauna that live there. The wildlife corridor will be enhanced through this project, allowing wildlife more freedom of movement throughout the reforested area. The construction and restoration along Gramies Run begins in March and will continue through early spring 2019. In a countryside where horses have run for generations, the Gramies Run project will set the pace for similar meets throughout Maryland.



### FREE TREES AND STREAM RESTORATION FOR YOUR EASEMENT

As an owner of land preserved with a conservation easement, you know the value of your trees and streams for providing clean air, clean water, and healthy habitats. Maryland Environmental Trust and the State Highway Administration are now offering free tree plantings and stream restoration projects on the Trust's easement properties in 11 western shore counties.

Find out more about how you and your property can grow your commitment to our state's environment through more trees and restored streams. Please contact John Turgeon, Easement Program Manager, at [john.turgeon@maryland.gov](mailto:john.turgeon@maryland.gov). As always, thank you for managing your property, caring for the easement, and considering this new way to grow land conservation in Maryland.



# A Historic Family Farm

**BOARD MEMBER TOBY LLOYD INTERVIEWS FELLOW BOARD MEMBER DAVID GREENE ABOUT HIS HISTORIC FAMILY FARM IN BALTIMORE COUNTY**

I like farmers' markets and nothing pleases me more than their recent growth in popularity. They're everywhere, and I thank the consumers for their burgeoning interest in buying products that are locally grown. It's a win-win for sure; consumers get a greater choice of locally grown foods and specialty crops, and farmers have more options to diversify their operations and sell their products at an increasing number of venues. These markets also help keep farms profitable and farmers farming, which ultimately helps maintain open space.

Walking the aisles of my favorite market this fall got me thinking ... how does a small farm operation in our area work? How did the farmers get into the business and what is each farmer's history? Knowing that the variety of answers to these questions would rival the complexity of a beautiful Amish quilt, I asked if I could stop by and talk with fellow Maryland Environmental Trust Board member and easement landowner David Greene to get some answers.

To say David has farming in his blood is an understatement. David lives on a 100 acre farm in Baltimore County that's been in his family since 1786. That's right, he lives on a farm that's been in his family for an eye popping 232 years! The farm is under a



*David and Nancy Greene raise sheep on a farm that has been in David's family since 1786.*

permanent Maryland Agricultural Land Preservation Foundation conservation easement. David raises sheep with his wife Nancy and sells their lamb products at the Maryland Sheep and Wool Festival, local farmers' markets, as well as by direct sales.

David and Nancy have been raising sheep on this historic farm since 1980 but it's the farmers' markets that have helped them grow their sales over the past 27 years. Prior to the farmers' market "boom" David and Nancy's options for selling their lamb and sheep products were limited. Their farm did not have a large marketing budget so they sold their livestock for the auction price of that day.

Enter the consumer demand for locally grown foods which changed the farm's sales and marketing strategy completely. "Farmers' markets and the Buy Local movement work together to help small specialty farmers flourish," says David. More access to consumers and greater exposure are two important benefits that farmers' markets provide for the farmers. Profit margins for farmers are tight so the added sales benefits that farmers' markets provide can save a farm's bottom line. Hearing this I realize that the "locally grown" movement is working as a partnership between the farmer and consumer ... each thriving on the needs of the other.

My conversation with David illustrated how critical farmers' markets are to the survival of our small farms and how much of a role consumers play in keeping these local producers in business. Shop at your local farm market and don't forget, you're not just a consumer but a partner to that farmer across the table!





# Doing the Dirty Work

**KEEP MARYLAND BEAUTIFUL GRANT RECIPIENT BLUE WATER BALTIMORE IS FACILITATING EXTENSIVE LITTER CLEANUPS THROUGHOUT BALTIMORE CITY**

BY: KAT PARDOE, MET INTERN

Let's talk about trash. Unglamorous as it may be, trash is ubiquitous. The average person produces 4.4 pounds of municipal solid waste per day — that adds up to over 1,600 pounds per year. Many of us dispose of our waste in the appropriate receptacles and never see or think of it again. But all of that trash has to go somewhere, and unfortunately, it does not always end up in a landfill. Litter is a particular concern for the Baltimore City region. Over 600,000 people live in Baltimore City, producing waste each and every day. Trash that does not end up in a landfill often ends up in stormwater runoff drains, making its way into one of the many rivers and creeks that flow through the Baltimore City region, eventually entering the Baltimore Harbor and the Chesapeake Bay. The consequences of this pollution are tremendous, so one organization has taken action to protect the water in and around Baltimore City.

Blue Water Baltimore is the city's largest and most active watershed nonprofit. Though trash removal is their largest initiative, their overarching approach to water protection is more holistic. In addition to the litter removal projects, Blue Water Baltimore also works in advocacy, forestry, education and community development.

Keeping an area the size of Baltimore City clean is no easy feat. However, with the help of over 3,000 volunteers, Blue Water Baltimore is making great strides in cleaning up the city. Blue Water Baltimore hosts two to five volunteer events each weekend; volunteers at trash removal events collect anywhere from 1,800 to 7,000 pounds of trash per cleanup. Alison Young, Volunteer Coordinator for Blue Water Baltimore, says she hopes these events promote a sense of “environmental and community stewardship” amongst the volunteers. In recognition of their incredible efforts



*Volunteers collect tires, one of the most prominent forms of litter.*



*Volunteers pick up trash from a public pond.*



*Proud Blue Water Baltimore volunteers celebrate after a successful litter cleanup.*

to keep the city free of trash, Blue Water Baltimore was awarded a Clean Up & Green Up Maryland grant from the Keep Maryland Beautiful program. Ms. Young says that the funding provided by the grant will help support the trash cleanup initiatives being held throughout the city.

The Spring 2017 Keep Maryland Beautiful grants were sponsored by Maryland Environmental Trust, State Highway Administration, and the Department of Housing and Community Development.

*For more information about Blue Water Baltimore and volunteer opportunities, please visit: <https://www.bluewaterbaltimore.org/>*



# Keep Maryland Beautiful

PROGRAM AWARDS \$307,500 IN GRANTS!

In spring 2018, MET awarded 82 grants totaling \$307,500 to schools, nonprofit groups municipalities and land trusts engaged in environmental education, community clean-up and beautification projects through the Keep Maryland Beautiful program. These grants, which are given annually, are funded by MET, the Department of Housing and Community Development and the Maryland Department of Transportation. "I'm thrilled to see the Keep Maryland Beautiful program continue to expand to over \$300,000 in grants awarded this year. We recognize a huge need to support communities, nonprofits and organizations that promote stewardship of our open spaces, environmental education and neighborhood greening activities," said MET Director Bill Leahy. "We thank our partners, the Maryland Department of Transportation and the Department of Housing and Community Development."

Twenty-two counties and Baltimore City were home to groups who received the KMB grants. Many of these grants focus on stewardship and developing and supporting communities, families, youth and students who are taking personal responsibility for the health of their communities, protecting nature in their back yards, and seeking a better understanding of environmental issues so that they may help reduce or resolve environmental challenges.

For more information about the KMB grant program, please visit the MET website or contact [KMB.dnr@maryland.gov](mailto:KMB.dnr@maryland.gov).



2018 KMB Clean Up & Green Up Maryland grant recipient Baltimore Tree Trust

## Land Trust Roundtables

Maryland Environmental Trust's Land Trust Roundtables convene regularly for the purpose of sharing ideas on land conservation. They are open to land trust staff, board members, volunteers and others interested in land conservation. Meetings are an opportunity to come together and exchange ideas about the challenges relating to land conservation.

The recent Land Trust Roundtable series focused on addressing big issues around permanence and viability of easements including discussions on renewable energy development on protected and working lands; land title trails; exploring ecosystem services on private lands; and more. The previous series included four quarterly meetings:

- **July 25, 2017** - Renewable Energy Development on Protected and Working Lands
- **October 17, 2017** - Ensuring Permanence through Title Trails and Good Relationships
- **January 30, 2018** - Exploring Ecosystem Services: Projects and Opportunities in Maryland
- **March 27, 2018** - Final Land Trust Roundtable in the Permanence and Viability series

To date, this series has been attended by more than 110 representatives from 44 organization (including 16 local land trusts). For more information on Land Trust Roundtables, please visit Maryland Environmental Trust's events page.





## MET LEADS THE WAY IN DATABASE MANAGEMENT

**M**ET launched a new customized web-based database, LOCATE, earlier this year with three local land trusts. LOCATE was originally developed for the Colorado Coalition of Land Trusts. By adapting this database, MET is creating a common platform for land trusts to manage their easement files as well as landowner communications. Unique to Maryland, this system will also facilitate the sharing of information on easement monitoring accomplishments between co-holder land trusts through database to database communication.

By implementing this accessible, innovative and unified system, MET is creating opportunities for the land trust community to become more efficient in data management and communications at a reasonable cost.



## 2018 BOARD OF TRUSTEES MEETING SCHEDULE

The Board of Trustees meets the first Monday of each month with the exception of January, July and August.

The board meetings begin at 4:00 pm and are held at 100 Community Place, Third Floor, MHT Board Room 3.218, Crownsville, Maryland, unless notified otherwise. These are public meetings. Please contact MET if you plan to attend.

### The following 2018 dates have been reserved for MET Board meetings:

<b>February 12</b>	<b>May 7</b>	<b>October 1</b>
<b>March 5</b>	<b>June 4</b>	<b>November 5</b>
<b>April 2</b>	<b>September 10</b>	<b>December 3</b>

Easements sometimes require advance notification and/or written approval for certain activities. Please see MET's website for information and application. If you are unsure whether notification or approval is required, contact MET's stewardship staff to help make that determination. Activities that might require approval or notification include:

- Constructing any new buildings or structures
- Renovating or enlarging existing structures
- Conveying property (provide contact information on new owner)
- Subdividing property
- Recording any other encumbrances on property (e.g. right-of-ways, ingress/egress, other easements)
- Entering wetlands mitigation or restoration programs
- Changing use of property (e.g. from forested lands to agricultural lands)
- Making a boundary line adjustment
- Harvesting timber

For complex matters, it may take a minimum of 30 days for MET to review and approve the proposed activities. Please contact Jon Chapman, Stewardship Program Manager, at 410-697-9519 to discuss your plans. All requests should be made in writing at least three weeks prior to the scheduled board meeting. Thank you!

## MET Partners with USFWS

**M**aryland Environmental Trust is assisting the U.S. Fish and Wildlife Service in the conservation and restoration of wetlands. The monetary value of donated conservation easements held by the Trust may be added as a financial "match" toward grants funded under the federal North American Wetlands Conservation Act.

The U.S. Fish and Wildlife Service was looking for wetlands already protected by a donated conservation easement held in perpetuity. The Trust's portfolio of conservation easements has several such candidates — lands with exceptional natural resources owned by conservation-minded people. Use of a Trust easement as "match" makes no impact on the landowner's interest in their property.

As holder and steward of a conservation easement in Wicomico County, the Trust, with permission of the property owner, allowed the U.S. Fish and Wildlife Service to use the value of the donation toward restoration of 60 acres of wetlands within the Blackwater National Wildlife Refuge in Dorchester County.

A former agricultural area at the Refuge will be turned back into a freshwater impoundment. A major habitat component at the Refuge is a series of constructed freshwater impoundments which are managed specifically to benefit waterfowl and other migratory birds. These habitats provide breeding, foraging, and resting areas for many species of migratory birds, including shorebirds, wading birds, raptors and waterfowl. The Refuge is important to migratory birds and the Trust is thrilled to have assisted with the restoration of this vital habitat.



Above: The restored wetlands within the Blackwater National Wildlife Refuge provide breeding, foraging, and resting areas for many species of migratory birds.



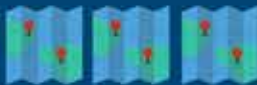
Maryland  
Environmental  
Trust

## STEWARDSHIP PROGRAM 2017

135,148 acres  
preserved



Conservation  
Easements 1,109



593 conservation  
easements  
coheld  
with partners

53% of easement  
portfolio coheld

33 coholding  
partners

For 50 years MET has been supporting private landowner stewards who are safeguarding Maryland's vital lands and water.

## Spring at MET

BY KELSEY GUMP, STEWARDSHIP INTERN

As my senior year began at the University of Maryland last fall, I reflected on my involvement on campus and within the state's environmentalist community. Though I had engaged with this community via volunteer work, I hadn't taken on a formal position with an organization or truly gotten a look at the "real world" of my environmental science & policy studies. I wanted to start somewhere relatively small, where I'd be able to work with likeminded people further along their careers than I am. Ideally, somewhere that valued passionate individuals as a catalyst for positive change.



When I found MET, I was overwhelmed by the sense that it would be a great fit. The blossoming geospatial analysis initiatives drew me in. Even more compelling was the chance to explore the land trust community, new to me but an integral part of the network of protected lands spanning the nation. Every step of the way, it's been clear that I'm surrounded by experienced, inspiring people — though they'd certainly waive off such praise — who are always happy to share wisdom. Though I haven't been with MET for very long, I've already been involved in optimizing the new LOCATE database for monitoring, sharing information with local land trust partners, and designing maps to prepare visits to eastern shore easements. Additionally, attending staff meetings and stewardship bubbles has given me the chance to absorb and learn about MET's history and future plans.

In the next few weeks, I hope to conduct some landowner interviews to hear more about land conservation. Additionally, I look forward to visiting several easements and attending the Resiliency & Climate Change roundtable! Such work drives my growing appreciation for all that Maryland has to offer. Though I didn't grow up here, 7.5 years of residence is plenty of time to cultivate Maryland pride. I'm positive I'll have more Maryland pride than ever after this spring, as I move onto an environmental science graduate program at Washington State University, armed with the perspective and skills I'm gaining through this opportunity.



# Thank You to Our Recent Contributors

(August 1, 2017 - February 1, 2018)

**Whether you make an unrestricted contribution, donate to our stewardship fund, or support a special project or program, your gift to MET is appreciated and essential to our future.**

**Please consider a tax-deductible contribution to MET this year. With your support, we can continue to protect Maryland's diverse natural, scenic, and historic resources. Thank you for your support!**

## **Conservation Champion \$10,000+**

Perry Bolton  
The estate of Alverta and  
Louisa Dillon  
The estate of Sarah Griggs  
The Helena Foundation

## **Environmental Benefactor \$5,000-\$9,999**

Winicki Family Trust

## **Open Space Guardian \$1,000-\$4,999**

Doris Blazek-White and  
Thacher W. White  
J. Dorsey Brown  
Mrs. Victoria Collins  
Mr. and Mrs. James W. Constable  
Wilson and Nancy Coudon  
Louisa C. Duemling  
Donald & Ingrid Graham  
L'Aiglon Foundation/ Stanislaw  
Maliszewski and Julia Jitkoff  
Thomas Lloyd  
Erin Hutson Meola  
*in memory of John Hutson*  
Jim and Maureen O'Connell  
James Riepe

## **Habitat Hero \$500-\$999**

Ethan Assal  
Dr. and Mrs. Gary Carver  
*in memory of Lynn Dale Carver,  
Frances Carver, Murray Carver*  
Charlie Conklin  
Kevin A Eskridge  
Iva Louise Gillet  
Mr. and Mrs. David L. Greene  
Royce Hanson  
Christian Havemeyer  
Tim and Julie Hussman  
Harriet S. Iglehart  
*in honor of James Constable*  
William, Lorien and Amelia Leahy  
Dr. Sarah J. Taylor-Rogers  
Mimi Voss  
Eileen and Harry V. Webster Jr.  
Ward H. White

## **Land Supporter \$100-\$499**

Christina and Frank Allen  
Chet and Paula Anderson  
Anonymous  
Anonymous  
Anonymous  
Anonymous  
Nelson Bortz  
David Bramble Foundation, Inc.  
Marney S. Bruce  
Robert L. Bryan  
Dr. Stephen & Mrs. Gloria  
Cameron  
Nessly and Susan Craig  
*in memory of John and  
Jean Malkmus*  
William F. D'Alonzo  
Dick D'Amato  
Mr. and Mrs. Robert B. Deford  
Hal and Nancy Delaplane  
Jim and Laurie Draper  
Mr. Alex G. Fisher  
Ruann Newcomer George  
Richard Gold  
Greg and Donna Greisman

Lucy and Kevin Haus  
James Hayes  
Marianne & Joe Hickman  
Jim Highsaw  
*in memory of John Hutson*  
Mr. and Mrs. Porter Hopkins  
*in honor of Ellie Kelly*  
Kenneth Ingham  
Larry and Nancy Isaacson  
*in memory of David and  
Maxine Hammond*  
Thomas B. Jeffers  
Annie & Henry Jenkins  
*in honor of Ellie Kelly*  
Ellen Harvey Kelly  
William and Phyllis Kilby  
Barbara Knapp  
Constance Lieder  
Kristen Orff Maneval  
*in memory of Robert E. Orff*  
Vivian Mills  
*in memory of George Garner*  
Linda P. Orff  
*in memory of Robert Orff*  
Mr. Donald Owen  
Don and Claudia Pleasants  
Richard L. Raesly  
Daniel G. Schuster  
Harold Scrimgeour  
Mr. William G. and  
Rev. Caroline Stewart  
Holly and George Stone  
Matthew Stover  
Adena W. Testa  
The Conservancy of Broad Creek  
William C. Trimble, Jr.  
Mrs. Frances Turgeon  
Mr. and Mrs. Robert L.  
Van Fossan, Jr.  
Gita van Heerden  
Lynn Vonderhorst  
Mr. and Mrs. Robert L. Voyles  
Mr. and Mrs. Douglas G. Worrall

## **Friend \$10-\$99**

The Aybar Family  
Goodloe Byron  
*in memory of John Hutson*  
Douglas Dobbin  
Terry Dunkin  
Rosemary Fanelli  
Mrs. Catherine Ford  
*in memory of John Hutson*  
Jamie Haydel  
Richard B. Hill  
Sandra Lumpkin *in memory of  
Samuel M.M. Lumpkin*  
Laurie Marquess  
Mr. and Mrs. William McCain  
Liz McDowell/Ron Boyer  
Charles W. Nicolson  
Helene Perry  
Mrs. G. Donald Riley Jr.  
Benjamin C. Tilghman  
Cathy Tipper  
John S. Weske  
Kathleen B. White  
Helen C. Wilkes  
Ms. Bonny Wright

## **Thank You to Our Recent Easement Donors**

Randall R. Amon & Marlene L. Amon  
Joshua S. Brumfield, Trustee and  
Mary McBurney Swann, Trustee  
Chateau Bu-De II, LLC  
Revocable Trust of  
Charles C. Fenwick, Sr.  
Gannon Family LLC  
Lewis M. Hale  
Michael D. Hankin and  
Ann D. Hankin  
Harford Land Trust, Inc.  
Keyser Run, LLC

## **Open Space Legacy Society**

Dr. and Mrs. Gary P. Carver  
Ms. Constance J. Lieder  
The Honorable S. Jay Plager  
Mr. and Mrs. Alan Schmaljohn





*Protecting Land Forever*

100 Community Place, 3rd Floor  
Crownsville, MD 21032  
Tel: 410-697-9515  
Fax: 410-697-9532  
www.dnr.maryland.gov/met

*Address Service Requested*



**STAY CONNECTED**

*Follow us on Facebook for the latest news.*

*This newsletter is printed on 100% recycled paper using soy-based inks.*

**HELP MET TO PROMOTE LAND CONSERVATION AND STEWARDSHIP ACROSS MARYLAND!**

The Maryland Environmental Trust depends on the generous contributions of individuals, companies, and foundations to fulfill our long-term mission. MET plays a unique role as a statewide organization dedicated to strengthening land conservation and stewardship by working with landowners, local land trusts, and other local and regional partners. Your gift ensures we are able to staff and implement our most critical programs.

**HELP STRENGTHEN LOCAL LAND CONSERVATION!**

Unrestricted gifts from our supporters allow us to implement programs and activities that help increase opportunities for land conservation, strengthen capacity of other groups, and inspire stewardship in local communities. This includes our annual conference and land conservation round tables held throughout the year.

**HELP BUILD THE MET STEWARDSHIP FUND!**

With every conservation easement MET agrees to hold, it accepts the responsibility to monitor the property regularly and ensure that the terms of the easement are upheld forever. In 2006, MET established a dedicated Stewardship Fund to support the ongoing stewardship of over 100,000 acres of conserved lands. Costs associated with regular on-site monitoring, volunteer and land trust training, landowner engagement and support, land restoration, and developing new technologies and approaches to facilitate regular stewardship must be covered through the generous support of our contributors.

**BECOME A MEMBER OF THE OPEN SPACE LEGACY SOCIETY!**

Like the thousands of landowners who have made the decision to permanently safeguard their land, you can make Maryland Environmental Trust a part of your legacy. By including MET in your estate plans, you are ensuring we will have the funds necessary to meet the long-term challenge of safeguarding easement permanence and ensuring a strong land conservation movement endures in Maryland.