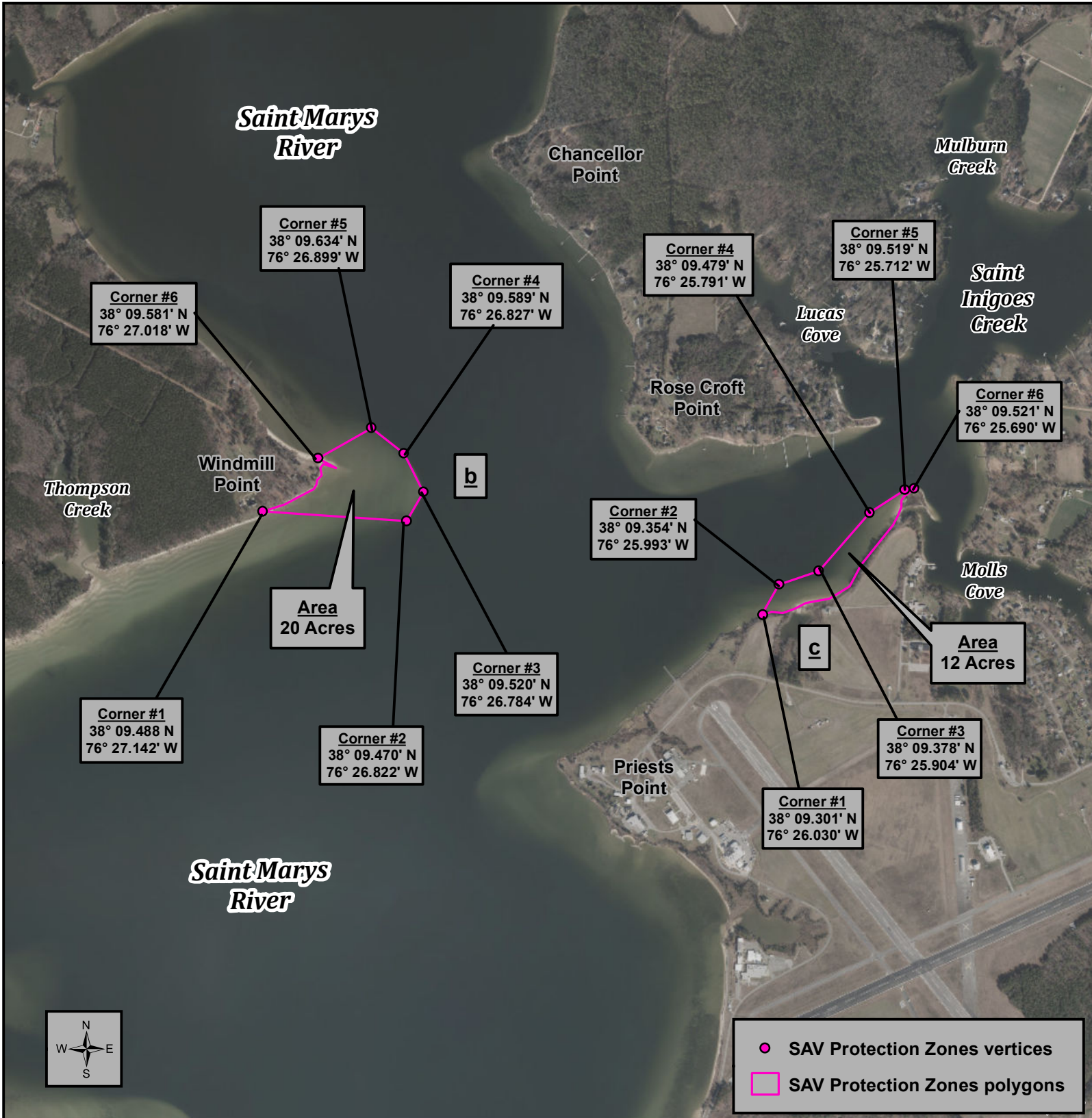


SAV Protection Zones - COMAR 08.02.01.12(4)(b & c)

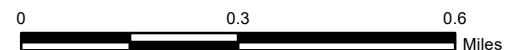
Saint Mary's County - middle Saint Mary's River



Wes Moore
Governor
Aruna Miller
Lt. Governor

Josh Kurtz
Secretary
David Goshorn
Deputy Secretary

effective December 11th, 2023



FOR INTERACTIVE MAP APPLICATION PLEASE SEE --
DNR.MARYLAND.GOV/FISHERIES/PAGES/ISHELLFISH/MAIN.ASPX

Projection:
 Lambert Conformal Conic
 North American Datum 1983